

MISSION DATA CARD

OPORD		Callsign		Mission		Date/Time	
3382/2024		Edelweiss 2		Training		071922NOV24	
Task	IFR Training					Freq	
AO						134.5	
Departure				Recovery			
MORMON MESA FOUR				ILS or LOC/DME Z RWY 21L			
#	Callsign	Pilot		IFF	TCN	LSR	NET
-1	Edelweiss 2-1	Snowbird		3421	16Y	1711	
-2	Edelweiss 2-2	Beathovenz		3422	79Y	1712	

LOADOUT

A/A	2xA120C, 2xA9X				GUN	100% HEI-T
A/G					CHF	0
POD	HTS, A184L, TGP				FLR	120
TKS	2xFT300				FUEL	100%

TOLD

	Takeoff	Target	Joker	Bingo	Land
FUEL	11169				

AIRBASES

	Name	TCN	ATIS	GND	TWR	RWY	Elev	ILS
Dep	Nellis AFB	12X	270.1	275.8	327.0	21L	1850	109.1
Arr	Nellis AFB	12X	270.1	275.8	327.0	21L	1850	109.1

FLIGHTPLAN

#	Name	Navaid/Coords/DME	ALT	TOT
1	ARCOE	LSV 357/30 (N36 44.260 W114 55.020)	15000	
2	Nellis	N36 14.680 W115 01.500	1865	

NOTES

Mormon Mesa - CH 90

Boulder - CH 114

ARCOE - 30NM LSV @ min 15000, R117

Nellis

OTHER FLIGHTS

Callsign	Mission	Airframe	Freq	TCN	Grpld	Laser
Nazgul 6	Training	4x F-15E	262.45	1/64		156X
AO	Range 66	Task	CAS Training			
Edelweiss 4	Training	4x F/A-18C	264.45	12/75		174X
AO		Task	IFR-Training			
Monster 1	Training	4x A-10C	132.15	1/64	21	161X
AO	R61 / GROOM LAKE	Task	MISSILE DEFENSE			
Edelweiss 1	Training	4x F/A-18C	264.15	1/64		171X
AO		Task				
Snake 6	Training	4x AH-64D	133.5	1/64		139X
AO		Task	CPG Training			

RADIO CHANNELS

#	Freq	Name
1		Flight/Squadron specific
2	289.4	Nellis Clearance Delivery
3	275.8	Nellis Ground
4	327.0	Nellis Tower
5	385.4	Nellis Approach/Departure West
6	273.55	Nellis Approach/Departure East
7	317.525	Nellis Control -- Sally
8	254.4	Nellis Control-- Lee
9	305.6	SOF Bullseye
10	343.725	EMERGENCY SINGLE FRQ
11	270.1	Nellis ATIS
12	360.625	Creech AFB Tower
13	250.1	HAVE QUICK 13
14	251.1	HAVE QUICK 14
15	252.1	HAVE QUICK 15
16	377.8	Blackjack
17	265.0	KC-135 AR-641A
18	360.8	KC-135MPRS AR-635
19	319.8	KC-135MPRS AR-625
20	300.05	KC-135 AR-231V

RAMROD

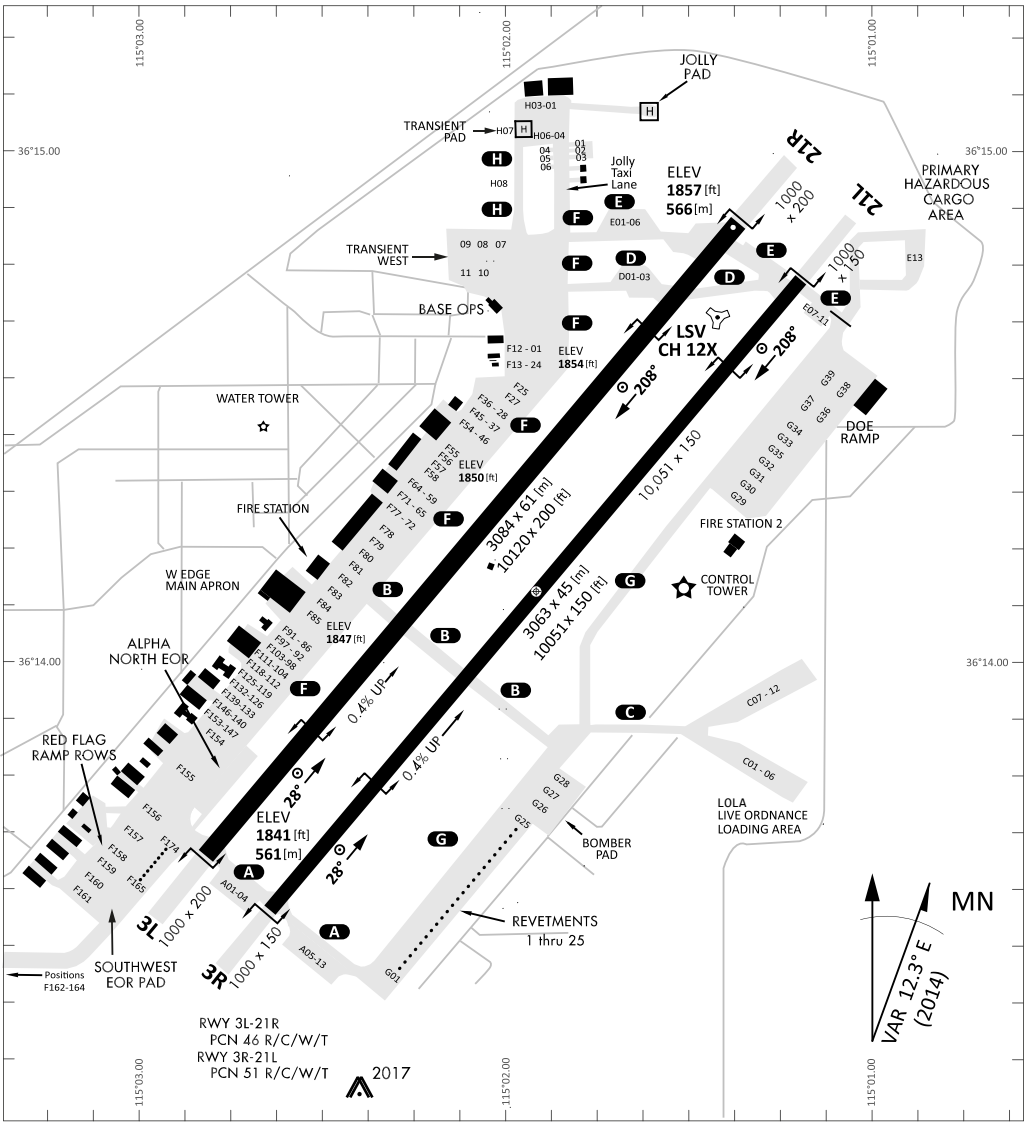
0	1	2	3	4	5	6	7	8	9
D	I	S	C	O	U	R	A	G	E

KTC 1400 C

	0	1	2	3	4	5	6	7	8	9
A	OGUH	QBI	SDY	VF	RJ	AMW	LP	KX	CT	NE
B	OGUJ	VKL	PNM	ED	CH	FAR	XY	QI	TS	WB
C	FBWP	CSG	AVL	RY	HK	MXE	JO	DU	IN	TQ
D	PHLT	NYX	AJR	QO	VS	KIU	WM	CE	DG	BF
E	OPTQ	BHJ	XMN	GS	CY	UEI	KA	WL	FR	DV
F	ELVY	BJS	COI	PG	XK	TUM	WH	NA	FR	DQ
G	GYIO	ADP	TQS	EH	KV	WMX	NF	LB	RC	JU
H	GWPR	CXN	DEV	MK	IO	SUT	HQ	YF	LB	AJ
I	NGYF	SLX	RAE	WK	OC	VQD	MU	TH	JP	BI
J	CDEY	SHI	KUN	PQ	FT	XGW	VL	MB	OJ	AR
K	VNEL	KQH	TMJ	PB	GA	IUX	YD	SO	FR	WC
L	TPKN	XGC	LQR	WJ	BO	IYA	DF	VE	MS	UH
M	HNVA	GDJ	MCS	WY	EX	UBO	FI	LP	TR	QK
N	FYTA	GEJ	XQC	VK	IB	OSP	LN	WH	DU	MR
O	EPSV	MJG	YKI	BF	TD	ROX	CH	QL	NA	UW
P	BIAF	VHM	QYE	CP	JN	LRT	OK	SW	XG	DU
Q	FCKW	TDG	VEJ	LR	OX	IPU	HM	YB	AQ	NS
R	TELV	SQN	BXU	IF	CJ	GHD	OY	PW	MR	AK
S	NRKV	ISD	BCA	OT	HG	XPF	WM	UY	LQ	EJ
T	KULW	HOX	TIP	BG	CY	JQF	EA	NV	SD	MR
U	HOCU	XLJ	MEK	WR	FP	SGI	QD	NA	VB	YT
V	EWJA	THM	RBI	SP	LK	FQV	UN	OG	XC	DY
W	OQSF	IAP	HCL	BU	KM	YTW	JN	VE	DR	XG
X	VURQ	HSW	JAT	EF	PK	DCI	XG	OL	MB	NY
Y	UNSB	MWE	ICY	VX	TK	DHG	RO	FL	AJ	QP

NAVAIDS

Id	Name	Channel	Position	Elevation
BCE	Bryce Canyon	75	N3741.35 W11218.23	9040
BIH	Bishop	33	N3722.62 W11821.99	4114
BLD	Boulder	114	N3559.75 W11451.82	3650
BTY	Beatty	94	N3648.54 W11644.86	2925
CDC	Cedar City	120	N3747.24 W11304.90	5463
DAG	Daggett	79	N3457.75 W11634.69	1760
EED	Needles	99	N3445.96 W11428.43	650
GFS	Goffs	91	N3507.87 W11510.59	4019
GRL	Groom Lake	18	N3713.91 W11548.16	4475
HEC	Hector	74	N3447.83 W11627.78	1854
ILC	Wilson Creek	110	N3815.02 W11423.65	9318
INS	Creech AFB	87	N3635.20 W11540.12	3101
LAS	McCarran Intl	116	N3604.78 W11509.59	2142
LSV	Nellis	12	N3614.68 W11501.50	1864
MLF	Milford	58	N3821.62 W11300.79	4977
MMM	Mormon Mesa	90	N3646.16 W11416.65	2120
MVA	Mina	98	N3833.92 W11801.97	7860
OAL	Coale Dale	124	N3800.20 W11746.23	4800
PGS	Peach Springs	57	N3537.48 W11332.67	4754
TPH	Tonopah Muni	119	N3801.84 W11702.01	5330
TQQ	Silverbow	77	N3748.00 W11647.00	5500
UTI	St George	23	N3705.29 W11335.53	2871



RWY 3L-21R
 PCN 46 R/C/W/T
 RWY 3R-21L
 PCN 51 R/C/W/T
 2017

PAR	RWY	CAT	MINIMA	ARP	ELEV	Scale 1:35'500 0 300 600 900 1200 1500 [m] 0 1000 2000 3000 4000 5000 [ft]
	21L	A B D E	2057 - 0.8 200 (200-0.8/1.6) GS 3°	36° 14.060° N	1857 [ft]	
	3R	A B D E	2057 - 0.8 200 (200-0.8/1.6) GS 3°	115° 01.058° W	566 [m]	
SRA	21R	A C D E	2257 - 1.2 350 (350-1.2/1.6)			
	3L	A C D E	2257 - 1.2 350 (350-1.2/1.6)			

RWY	TORA	TODA	ASDA	LDA	PSN	THR	ALS
21L	10051 [ft] 3063 [m]	11051 [ft] 3368 [m]	11051 [ft] 3368 [m]	10051 [ft] 3063 [m]	36°14.043' N	115°01.018' W	⊕
3R	10120 [ft] 3084 [m]	11120 [ft] 3398 [m]	11120 [ft] 3398 [m]	10120 [ft] 3084 [m]	36°13.029' N	115°02.038' W	

ATIS	NELLIS GROUND	NELLIS TOWER	NELLIS CONTROL	TACAN	ILS RWY 21L	NELLIS EAST	NELLIS WEST
270.100 MHz	275.800 121.800	327.000 132.55	317.525	LSV 12X	109.10 Mhz	384.400	385.000

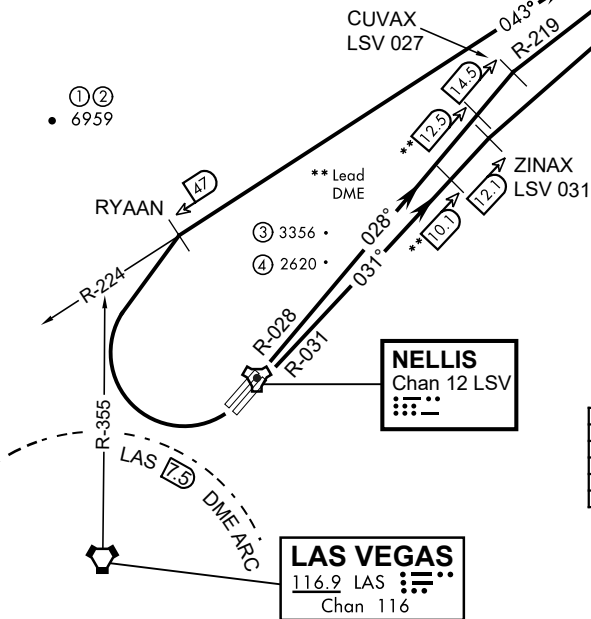
ATIS
270.100
NELLIS GROUND
275.800
NELLIS TOWER
327.000
NELLIS CONTROL
317.525
NELLIS DEP/APP EAST
384.400
BLACKJACK
377.800



MORMON MESA
114.3 MMM
Chan 90
L-9 H-3

19,000

CAUTION: If unable to comply with restrictions advise ATC prior to departure.



- ① 12.24 NM from Rwy 21R
- ② 12.40 NM from Rwy 21L
- ③ 5.67 NM from Rwy 3L
- ④ 5.85 NM from Rwy 3R

Rwy	Knots	60	120	180	240	300	360
* 3L	Ⓞ V/V(fpm)	291	582	873	1164	1455	1746
* 3R	Ⓞ V/V(fpm)	258	516	774	1032	1290	1548
* 21L	Ⓞ V/V(fpm)	529	1058	1587	2116	2645	3174
* 21R	Ⓞ V/V(fpm)	536	1072	1680	2144	2680	3216
† 3L/R	Ⓞ V/V(fpm)	359	718	1077	1436	1795	2154

* Minimum † ATC Climb Rate
 Ⓞ To 3600
 Ⓜ To 3200
 Ⓞ To 17,000
 Ⓞ To 13,500
 Ⓞ To 19,000

DEPARTURE ROUTE DESCRIPTION

TAKE-OFF RWY 3L

- Fly runway heading to intercept the LSV TACAN R-027 then direct CUVAX, intercept the MMM VORTAC R-219 then direct MMM climbing to FL190 or as assigned, then via assigned route.

TAKE-OFF RWY 3R

- Fly runway heading to intercept the LSV TACAN R-031 then direct ZINAX, intercept the MMM VORTAC R-217 then direct MMM, climbing to FL190 or as assigned, then via assigned route.

TAKE-OFF RWY 21L/R

- Turn right to intercept MMM VORTAC R-224 prior to MMM 47 DME, remain North of the LAS VORTAC 7.5 DME, remain East of LAS R-355, intercept MMM R-224 then direct MMM cross MMM at or above FL190, then via assigned route.

NOISE ABATMENT PROCEDURES: Fly acc. Nellis Noise Abatement instructions

