

**MISSION DATA CARD**

OPORD		Callsign		Mission		Date/Time		
3380/2024		Nazgul 6		Training		072000NOV24		
Task	CAS Training					Freq		
AO	Range 66					262.45		
Departure				Recovery				
FYTTR THREE				HI-TACAN Y RWY 21L				
#	Callsign		Pilot		IFF	TCN	LSR	NET
-1	Nazgul 6-1		Striver/UTA		1161	1Y	1561	
-2	Nazgul 6-2		Razorback		1162	64Y	1562	

**LOADOUT**

A/A	2xA9M, 2xA120C				GUN	100% SAPHEI
A/G	G311B, 3xG54, 2xG12				CHF	240
POD	TGT, NAV				FLR	0
TKS	FT610				FUEL	100%

**TOLD**

	Takeoff	Target	Joker	Bingo	Land
FUEL	26553				

**AIRBASES**

	Name	TCN	ATIS	GND	TWR	RWY	Elev	ILS
Dep	Nellis AFB	12X	270.1	275.8	327.0	21L	1850	109.1
Arr	Nellis AFB	12X	270.1	275.8	327.0	21L	1850	109.1

**FLIGHTPLAN**

#	Name	Navaid/Coords/DME	ALT	TOT
1	FYTTR	LSV 269/33 (N36 21.440 W115 41.470)	14000	
2	IP	N35 35 W116 40	20000	
3	T66.01	N35 34.881 W116 42.391	20000	
4	DUDBE	N36 21.849 W115 20.581	20000	

**COMMS**

Radio	Usage
1	262.45
2	04 / 126.5 / 04

**SUPPORT****Tanker**

Callsign	TCN	Freq	ALT	TAS
TEXACO 2	95Y	289.7	FL220	420
	Pos	Pegasus.1: CDC 166/102 (N3730 W11440)		

**AWACS**

Callsign	Freq	ALT	Pos
MAGIC	377.8	FL270	N3749 W11417 - N3713 W11446

## OTHER FLIGHTS

Callsign	Mission	Airframe	Freq	TCN	Grpld	Laser
Edelweiss 2	Training	2x F-16C	134.5	16/79		171X
AO		Task	IFR Training			
Edelweiss 4	Training	4x F/A-18C	264.45	12/75		174X
AO		Task	IFR-Training			
Monster 1	Training	4x A-10C	132.15	1/64	21	161X
AO	R61 / GROOM LAKE	Task	MISSILE DEFENSE			
Edelweiss 1	Training	4x F/A-18C	264.15	1/64		171X
AO		Task				
Snake 6	Training	4x AH-64D	133.5	1/64		139X
AO		Task	CPG Training			

**RADIO CHANNELS**

#	Freq	Name
1		Flight/Squadron specific
2	289.4	Nellis Clearance Delivery
3	275.8	Nellis Ground
4	327.0	Nellis Tower
5	385.4	Nellis Approach/Departure West
6	273.55	Nellis Approach/Departure East
7	317.525	Nellis Control -- Sally
8	254.4	Nellis Control-- Lee
9	305.6	SOF Bullseye
10	343.725	EMERGENCY SINGLE FRQ
11	270.1	Nellis ATIS
12	360.625	Creech AFB Tower
13	250.1	HAVE QUICK 13
14	251.1	HAVE QUICK 14
15	252.1	HAVE QUICK 15
16	377.8	Blackjack
17	265.0	KC-135 AR-641A
18	360.8	KC-135MPRS AR-635
19	319.8	KC-135MPRS AR-625
20	300.05	KC-135 AR-231V

**RAMROD**

0	1	2	3	4	5	6	7	8	9
D	I	S	C	O	U	R	A	G	E

**KTC 1400 C**

	0	1	2	3	4	5	6	7	8	9
A	OGUH	QBI	SDY	VF	RJ	AMW	LP	KX	CT	NE
B	OGUJ	VKL	PNM	ED	CH	FAR	XY	QI	TS	WB
C	FBWP	CSG	AVL	RY	HK	MXE	JO	DU	IN	TQ
D	PHLT	NYX	AJR	QO	VS	KIU	WM	CE	DG	BF
E	OPTQ	BHJ	XMN	GS	CY	UEI	KA	WL	FR	DV
F	ELVY	BJS	COI	PG	XK	TUM	WH	NA	FR	DQ
G	GYIO	ADP	TQS	EH	KV	WMX	NF	LB	RC	JU
H	GWPR	CXN	DEV	MK	IO	SUT	HQ	YF	LB	AJ
I	NGYF	SLX	RAE	WK	OC	VQD	MU	TH	JP	BI
J	CDEY	SHI	KUN	PQ	FT	XGW	VL	MB	OJ	AR
K	VNEL	KQH	TMJ	PB	GA	IUX	YD	SO	FR	WC
L	TPKN	XGC	LQR	WJ	BO	IYA	DF	VE	MS	UH
M	HNVA	GDJ	MCS	WY	EX	UBO	FI	LP	TR	QK
N	FYTA	GEJ	XQC	VK	IB	OSP	LN	WH	DU	MR
O	EPSV	MJG	YKI	BF	TD	ROX	CH	QL	NA	UW
P	BIAF	VHM	QYE	CP	JN	LRT	OK	SW	XG	DU
Q	FCKW	TDG	VEJ	LR	OX	IPU	HM	YB	AQ	NS
R	TELV	SQN	BXU	IF	CJ	GHD	OY	PW	MR	AK
S	NRKV	ISD	BCA	OT	HG	XPF	WM	UY	LQ	EJ
T	KULW	HOX	TIP	BG	CY	JQF	EA	NV	SD	MR
U	HOCU	XLJ	MEK	WR	FP	SGI	QD	NA	VB	YT
V	EWJA	THM	RBI	SP	LK	FQV	UN	OG	XC	DY
W	OQSF	IAP	HCL	BU	KM	YTW	JN	VE	DR	XG
X	VURQ	HSW	JAT	EF	PK	DCI	XG	OL	MB	NY
Y	UNSB	MWE	ICY	VX	TK	DHG	RO	FL	AJ	QP

**NAVAIDS**

<b>Id</b>	<b>Name</b>	<b>Channel</b>	<b>Position</b>	<b>Elevation</b>
BCE	Bryce Canyon	75	N3741.35 W11218.23	9040
BIH	Bishop	33	N3722.62 W11821.99	4114
BLD	Boulder	114	N3559.75 W11451.82	3650
BTY	Beatty	94	N3648.54 W11644.86	2925
CDC	Cedar City	120	N3747.24 W11304.90	5463
DAG	Daggett	79	N3457.75 W11634.69	1760
EED	Needles	99	N3445.96 W11428.43	650
GFS	Goffs	91	N3507.87 W11510.59	4019
GRL	Groom Lake	18	N3713.91 W11548.16	4475
HEC	Hector	74	N3447.83 W11627.78	1854
ILC	Wilson Creek	110	N3815.02 W11423.65	9318
INS	Creech AFB	87	N3635.20 W11540.12	3101
LAS	McCarran Intl	116	N3604.78 W11509.59	2142
LSV	Nellis	12	N3614.68 W11501.50	1864
MLF	Milford	58	N3821.62 W11300.79	4977
MMM	Mormon Mesa	90	N3646.16 W11416.65	2120
MVA	Mina	98	N3833.92 W11801.97	7860
OAL	Coale Dale	124	N3800.20 W11746.23	4800
PGS	Peach Springs	57	N3537.48 W11332.67	4754
TPH	Tonopah Muni	119	N3801.84 W11702.01	5330
TQQ	Silverbow	77	N3748.00 W11647.00	5500
UTI	St George	23	N3705.29 W11335.53	2871



RWY 3L-21R  
 PCN 46 R/C/W/T  
 RWY 3R-21L  
 PCN 51 R/C/W/T  
 2017

PAR	RWY	CAT	MINIMA		ARP	ELEV	Scale 1:35'500	
	21L	A B D E	2057 - 0.8 200 (200-0.8/1.6)	GS 3°	36° 14.060° N 115° 01.058° W	1857 [ft] 566 [m]	0 300 600 900 1200 1500 [m]	
	3R	A B D E	2057 - 0.8 200 (200-0.8/1.6)	GS 3°			0 1000 2000 3000 4000 5000 [ft]	
SRA	21R	A C D E	2257 - 1.2 350 (350-1.2/1.6)					
	3L	A C D E	2257 - 1.2 350 (350-1.2/1.6)					

RWY	TORA	TODA	ASDA	LDA	PSN	THR	ALS
21L	10051 [ft] 3063 [m]	11051 [ft] 3368 [m]	11051 [ft] 3368 [m]	10051 [ft] 3063 [m]	36°14.043' N	115°01.018' W	⊕
3R	10120 [ft] 3084 [m]	11120 [ft] 3398 [m]	11120 [ft] 3398 [m]	10120 [ft] 3084 [m]	36°13.029' N	115°02.038' W	

ATIS	NELLIS GROUND	NELLIS TOWER	NELLIS CONTROL	TACAN	ILS RWY 21L	NELLIS EAST	NELLIS WEST
270.100 MHz	275.800   121.800	327.000   132.55	317.525	LSV 12X	109.10 Mhz	384.400	385.000



**FYTTTR THREE DEPARTURE** IFR CHART | VALID 2014 LAS VEGAS, NEVADA

ATIS  
270.100  
NELLIS GROUND  
275.800  
NELLIS TOWER  
327.000  
NELLIS CONTROL  
317.525  
NELLIS DEP/APP EAST  
384.400  
BLACKJACK  
377.800



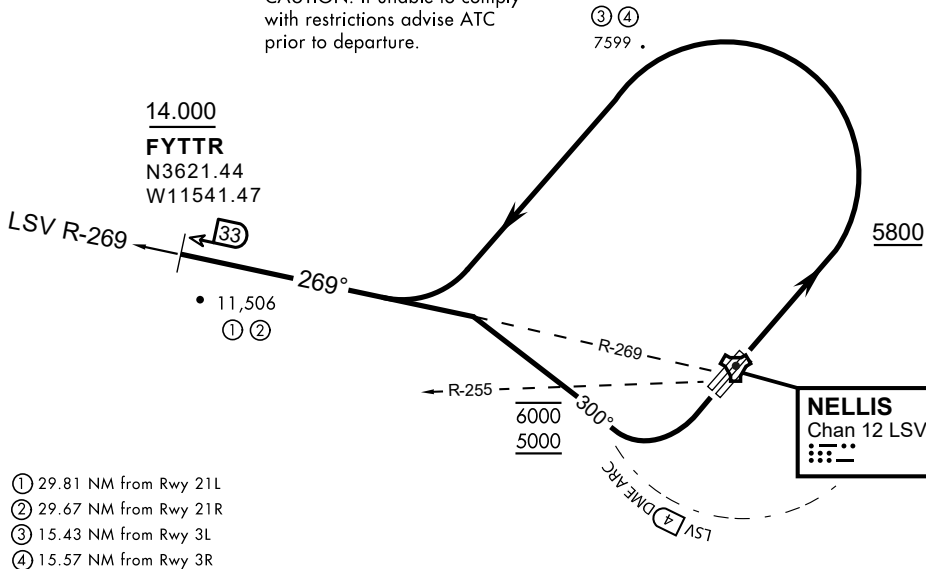
Rwy	Knots	60	120	180	240	300	360
3L (a)	V/V(fpm)	394	788	1182	1576	1970	2364
3R (a)	V/V(fpm)	392	784	1176	1568	1960	2352
21L (b)	V/V(fpm)	388	776	1164	1552	1940	2328
21R (b)	V/V(fpm)	390	780	1170	1560	1950	2340

Minimum Climb Rate

(a) to 9300

(b) to 13 500

CAUTION: If unable to comply with restrictions advise ATC prior to departure.



- ① 29.81 NM from Rwy 21L
- ② 29.67 NM from Rwy 21R
- ③ 15.43 NM from Rwy 3L
- ④ 15.57 NM from Rwy 3R

**DEPARTURE ROUTE DESCRIPTION**

**TAKEOFF RWY 3L/R**

- Fly runway heading until reaching 5,800'.
- Then climbing left turn to intercept LSV TACAN R-269 outbound.
- Cross FYTTTR at or above 14,000' or as assigned, then via assigned route.

**TAKEOFF RWY 21L/21R**

- Turn right to intercept LSV TACAN R-269 outbound.
- Remain within LSV 4 DME until joining LSV R-269
- Cross R-255 between 5,000' and 6,000'.
- Cross FYTTTR at or above 14,000' or as assigned, then via assigned route.

**NOISE ABATEMENT PROCEDURES:**

Fly according Nellis Noise Abatement instructions as published

# HI-TACAN Y RWY 21L

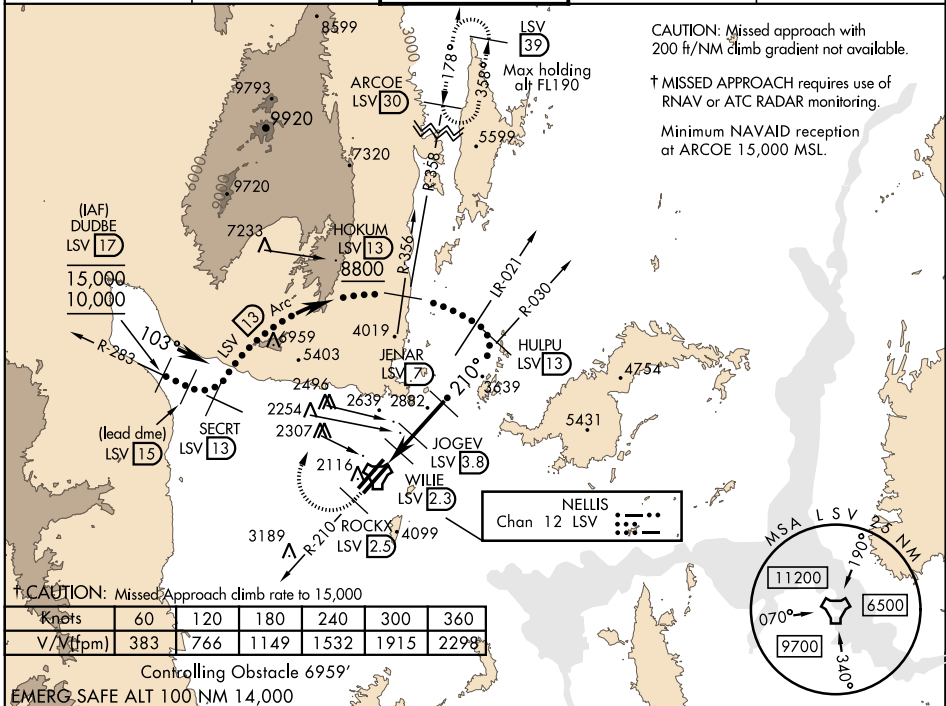
TACAN LSV Chan 12	APCH CRS 210°	Rwy ldg 21L TDZE 1865 Arprt Elev 1869	Rwy ldg 21R TDZE 1869
----------------------	------------------	---------------------------------------------	--------------------------

JAL-227 [USAF] NELLIS AFB (KLSV)

\* When ALS inop, increase CAT CDE vis to 1 3/4 miles.  
 \*\* Circling not authorized E of Rwy 3R-21L.

† MISSED APPROACH: Climb to 15,000, intercept LSV TACAN R-210 to 2.5 DME (ROCKX), then climbing right turn heading 020° to join LSV R-358 to ARCOE and hold, continue climb in hold to 15,000. Missed approach not for civil use.

ATIS 270.1	NELLIS APP CON 124.95 273.55	NELLIS TOWER 132.55 327.0	GND CON 121.8 275.8	CLNC DEL 120.9 289.4
---------------	---------------------------------	------------------------------	------------------------	-------------------------

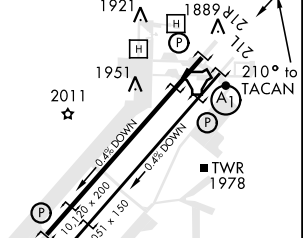
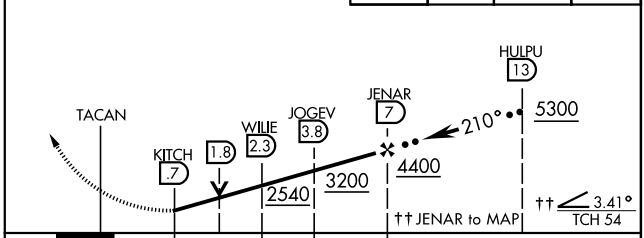


CAUTION: Missed approach with 200 ft/NM climb gradient not available.

† MISSED APPROACH requires use of RNAV or ATC RADAR monitoring.

Minimum NAVAID reception at ARCOE 15,000 MSL.

VGSJ and descent angles not coincident (VGSJ angle 3.00/TCH 54).	15,000 LSV R-210	ROCKX LSV 2.5	hdg 020°	ARCOE R-358 30	ELEV 1869	TDZE 21L 1865	TDZE 21R 1869
------------------------------------------------------------------	------------------	---------------	----------	----------------	-----------	---------------	---------------



CATEGORY	C	D	E
S-21L *	2460-1 1/4	595 (600-1 1/4)	
SIDESTEP 21R	2460-1	591 (600-1)	
CIRCLING **	2620-2 1/4 751 (800-2 1/4)	2840-3 971 (1000-3)	3040-3 1171 (1200-3)

HIRL all Rwy

# HI-TACAN Y RWY 21L

SW-4, 05 DEC 2019 to 02 JAN 2020

SW-4, 05 DEC 2019 to 02 JAN 2020