

MISSION DATA CARD

OPORD		Callsign		Mission		Date/Time		
3379/2024		Tiger 1		Training		042014NOV24		
Task	BVR						Freq	
AO	BVR Range X						261.15	
Departure				Recovery				
				HI-TACAN Y RWY 21L				
#	Callsign		Pilot		IFF	TCN	LSR	NET
-1	Tiger 1-1		Ghost		1011	1Y	1551	
-2	Tiger 1-2		Hawk		1012	64Y	1552	
-3	Tiger 1-3		Jemi		1013	64X	1553	
-4	Tiger 1-4		Kosmoss		1014	1X	1554	

LOADOUT

A/A						GUN	
A/G						CHF	
POD						FLR	
TKS						FUEL	

TOLD

	Takeoff	Target	Joker	Bingo	Land
FUEL	10803				

AIRBASES

	Name	TCN	ATIS	GND	TWR	RWY	Elev	ILS
Arr	Nellis AFB	12X	270.1	275.8	327.0	21L	1850	109.1
Div	Creech AFB	87X	290.45	275.8	360.6			

OTHER FLIGHTS

Callsign	Mission	Airframe	Freq	TCN	Grpld	Laser
Rattler 1	Training	2x AH-64D	133.5	1/64		125X
AO	LATNA, LATNG	Task	AR			
Raptor 1	Training	4x F-16C	134.0	1/64		162X
AO	BVR Range Y	Task	BVR			
Nazgul 6	Training	4x F-15E	262.45	1/64		156X
AO	R62	Task	A/G Proficiency			
Monster 1	Training	4x A-10C	132.15	1/64	21	161X
AO	R65	Task	CAS			

RADIO CHANNELS

#	Freq	Name
1		Flight/Squadron specific
2	289.4	Nellis Clearance Delivery
3	275.8	Nellis Ground
4	327.0	Nellis Tower
5	385.4	Nellis Approach/Departure West
6	273.55	Nellis Approach/Departure East
7	317.525	Nellis Control -- Sally
8	254.4	Nellis Control-- Lee
9	305.6	SOF Bullseye
10	343.725	EMERGENCY SINGLE FRQ
11	270.1	Nellis ATIS
12	360.625	Creech AFB Tower
13	250.1	HAVE QUICK 13
14	251.1	HAVE QUICK 14
15	252.1	HAVE QUICK 15
16	377.8	Blackjack
17	265.0	KC-135 AR-641A
18	360.8	KC-135MPRS AR-635
19	319.8	KC-135MPRS AR-625
20	300.05	KC-135 AR-231V

RAMROD										
0	1	2	3	4	5	6	7	8	9	
P	L	A	Y	W	R	I	G	H	T	
KTC 1400 C										
	0	1	2	3	4	5	6	7	8	9
A	QTIC	DNO	KUL	MS	XB	FJR	YV	AH	PG	EW
B	NTEF	JVP	ICB	OL	WX	DMU	AS	YG	RQ	HK
C	DKFS	UIA	RYM	LV	GH	OBW	TQ	XC	JN	EP
D	PGBM	NYT	AXU	HK	OS	LRC	DF	EJ	QV	IW
E	MWIC	QSG	XDV	NY	LF	UHP	TA	EK	BR	OJ
F	OHGF	JYN	KIA	RU	DE	CBT	VL	MW	PX	SQ
G	ELJF	GSM	WUD	RV	PY	XAH	TO	IQ	CK	BN
H	VNJD	KHR	ETQ	IG	YM	UFO	CX	BA	LS	WP
I	GCJD	QTB	VSM	LP	XO	YWA	UF	RI	HN	KE
J	UIOL	NBW	DTK	YV	JA	GSE	QP	MF	RH	CX
K	GYQV	CND	FTI	MK	RS	JOH	UP	AX	LE	WB
L	IPWN	YAF	QJT	LX	GS	DRB	VC	EU	OK	MH
M	WHRP	UOL	INM	KT	VB	EGC	DJ	SX	YQ	FA
N	LWPE	BJF	USD	GA	OC	KIT	RQ	HX	YM	VN
O	NEIH	LAV	CMG	QT	JS	OUP	YD	BX	WR	KF
P	TKJD	ISU	ALR	NP	BQ	XGO	CV	FM	HY	WE
Q	ARCL	BPK	OGY	MQ	HD	EFS	JX	WI	VU	NT
R	VDTK	GIO	FLJ	SU	PY	EXR	BH	MN	AQ	WC
S	ETYV	HFW	XOP	DU	KA	LCI	SM	NQ	BR	GJ
T	AWQS	JUG	PNF	IC	MK	HYO	BD	RX	EL	TV
U	HMVU	BAS	CTN	RW	OG	LIP	QY	EJ	KF	XD
V	IMNT	QLH	YCU	FX	GB	JAS	EK	OD	WV	PR
W	AXOS	VUN	GYJ	FW	QL	KMT	DP	CH	BR	IE
X	IKLN	MXP	GHD	SU	OJ	CEQ	AR	WF	BY	VT
Y	CVAB	YXE	LIS	JO	FW	NGH	RP	QM	TU	DK

NAVAIDS

Id	Name	Channel	Position	Elevation
BCE	Bryce Canyon	75	N3741.35 W11218.23	9040
BIH	Bishop	33	N3722.62 W11821.99	4114
BLD	Boulder	114	N3559.75 W11451.82	3650
BTY	Beatty	94	N3648.54 W11644.86	2925
CDC	Cedar City	120	N3747.24 W11304.90	5463
DAG	Daggett	79	N3457.75 W11634.69	1760
EED	Needles	99	N3445.96 W11428.43	650
GFS	Goffs	91	N3507.87 W11510.59	4019
GRL	Groom Lake	18	N3713.91 W11548.16	4475
HEC	Hector	74	N3447.83 W11627.78	1854
ILC	Wilson Creek	110	N3815.02 W11423.65	9318
INS	Creech AFB	87	N3635.20 W11540.12	3101
LAS	McCarran Intl	116	N3604.78 W11509.59	2142
LSV	Nellis	12	N3614.68 W11501.50	1864
MLF	Milford	58	N3821.62 W11300.79	4977
MMM	Mormon Mesa	90	N3646.16 W11416.65	2120
MVA	Mina	98	N3833.92 W11801.97	7860
OAL	Coale Dale	124	N3800.20 W11746.23	4800
PGS	Peach Springs	57	N3537.48 W11332.67	4754
TPH	Tonopah Muni	119	N3801.84 W11702.01	5330
TQQ	Silverbow	77	N3748.00 W11647.00	5500
UTI	St George	23	N3705.29 W11335.53	2871

HI-TACAN Y RWY 21L

TACAN LSV Chan 12	APCH CRS 210°	Rwy ldg 21L 10,051 TDZE 1865 Arpt Elev 1869	Rwy ldg 21R 10,120 TDZE 1869
-------------------	---------------	---	------------------------------

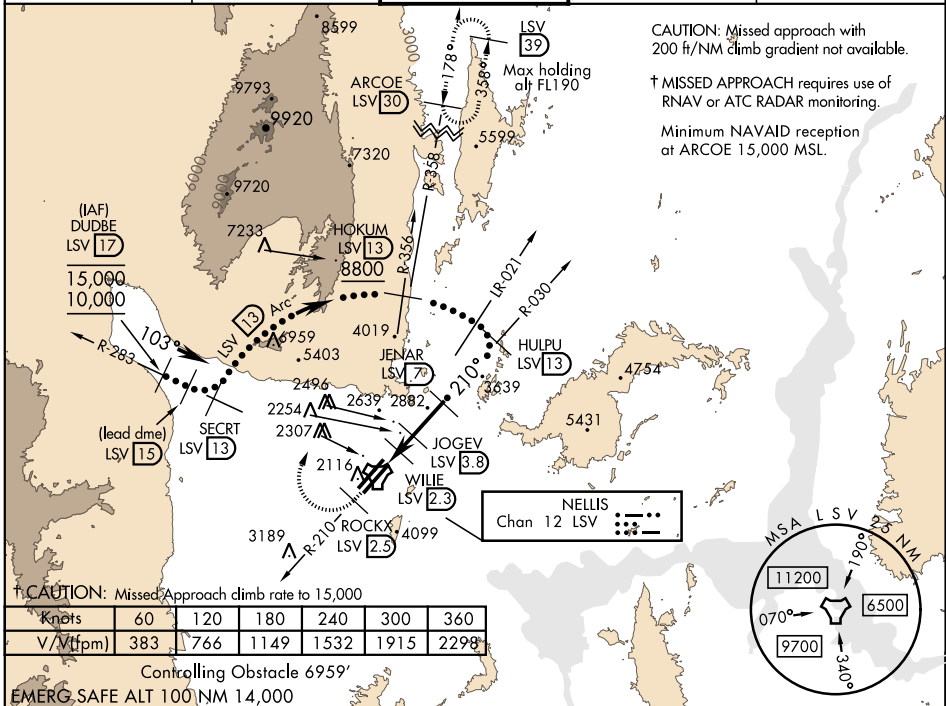
JAL-227 [USAF] NELLIS AFB (KLSV)

* When ALS inop, increase CAT CDE vis to 1 3/4 miles.
 ** Circling not authorized E of Rwy 3R-21L.



† MISSED APPROACH: Climb to 15,000, intercept LSV TACAN R-210 to 2.5 DME (ROCKX), then climbing right turn heading 020° to join LSV R-358 to ARCOE and hold, continue climb in hold to 15,000. Missed approach not for civil use.

ATIS 270.1	NELLIS APP CON 124.95 273.55	NELLIS TOWER 132.55 327.0	GND CON 121.8 275.8	CLNC DEL 120.9 289.4
------------	------------------------------	---------------------------	---------------------	----------------------

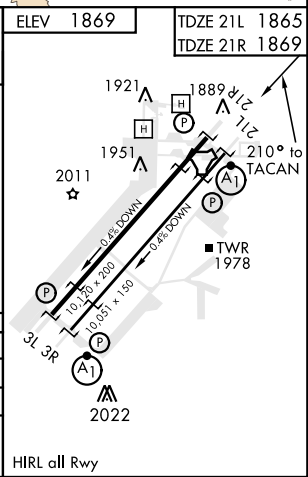
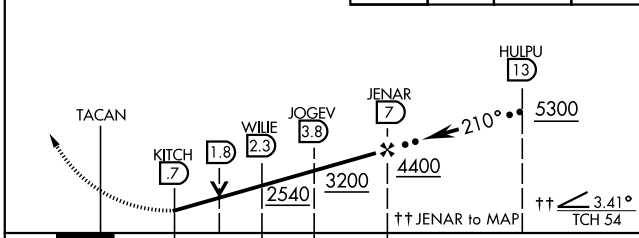


† CAUTION: Missed Approach climb rate to 15,000

Knots	60	120	180	240	300	360
V/Vt (fpm)	383	766	1149	1532	1915	2298

Controlling Obstacle 6959'
EMERG. SAFE ALT 100 NM 14,000

VGSJ and descent angles not coincident (VGSJ angle 3.00/TCH 54).	15,000 LSV R-210	ROCKX LSV 2.5	hdg 020°	ARCOE R-358 30	ELEV 1869	TDZE 21L 1865	TDZE 21R 1869
--	------------------	---------------	----------	----------------	-----------	---------------	---------------



CATEGORY	C	D	E
S-21L *	2460-1 1/4	595 (600-1 1/4)	
SIDESTEP 21R	2460-1	591 (600-1)	
CIRCLING **	2620-2 1/4 751 (800-2 1/4)	2840-3 971 (1000-3)	3040-3 1171 (1200-3)

HI-TACAN Y RWY 21L

SW-4, 05 DEC 2019 to 02 JAN 2020

SW-4, 05 DEC 2019 to 02 JAN 2020



RWY 3L-21R
 PCN 46 R/C/W/T
 RWY 3R-21L
 PCN 51 R/C/W/T
 2017

PAR	RWY	CAT	MINIMA		ARP	ELEV	Scale 1:35'500	
	21L	A B D E	2057 - 0.8 200 (200-0.8/1.6)	GS 3°	36° 14.060° N 115° 01.058° W	1857 [ft] 566 [m]	0 300 600 900 1200 1500 [m]	
	3R	A B D E	2057 - 0.8 200 (200-0.8/1.6)	GS 3°			0 1000 2000 3000 4000 5000 [ft]	
SRA	21R	A C D E	2257 - 1.2 350 (350-1.2/1.6)					
	3L	A C D E	2257 - 1.2 350 (350-1.2/1.6)					

RWY	TORA	TODA	ASDA	LDA	PSN	THR	ALS
21L	10051 [ft] 3063 [m]	11051 [ft] 3368 [m]	11051 [ft] 3368 [m]	10051 [ft] 3063 [m]	36°14.043' N	115°01.018' W	⊕
3R	10120 [ft] 3084 [m]	11120 [ft] 3398 [m]	11120 [ft] 3398 [m]	10120 [ft] 3084 [m]	36°13.029' N	115°02.038' W	

ATIS	NELLIS GROUND	NELLIS TOWER	NELLIS CONTROL	TACAN	ILS RWY 21L	NELLIS EAST	NELLIS WEST
270.100 MHz	275.800 121.800	327.000 132.55	317.525	LSV 12X	109.10 Mhz	384.400	385.000



INDIAN SPRINGS, NEVADA

TACAN INS Chan 87	APCH CRS 065°	Rwy ldg TDZE 3133	9002 3113
		Arpt Elev 3113	

INDIAN SPRINGS AF AUX (KINS)

▼ * MISSED APPROACH: Straight ahead to INS TACAN, intercept INS R-outbound, cross 17 DME at or above 9500, then direkt KSV TACAN 114

NELLIS CON

CREECH AFB TOWER
118.30 60.60

GND CON

NOT FOR CIVIL USE

FOR USE UNDER BASIC VFR
WEATHER MINIMUMS ONLY

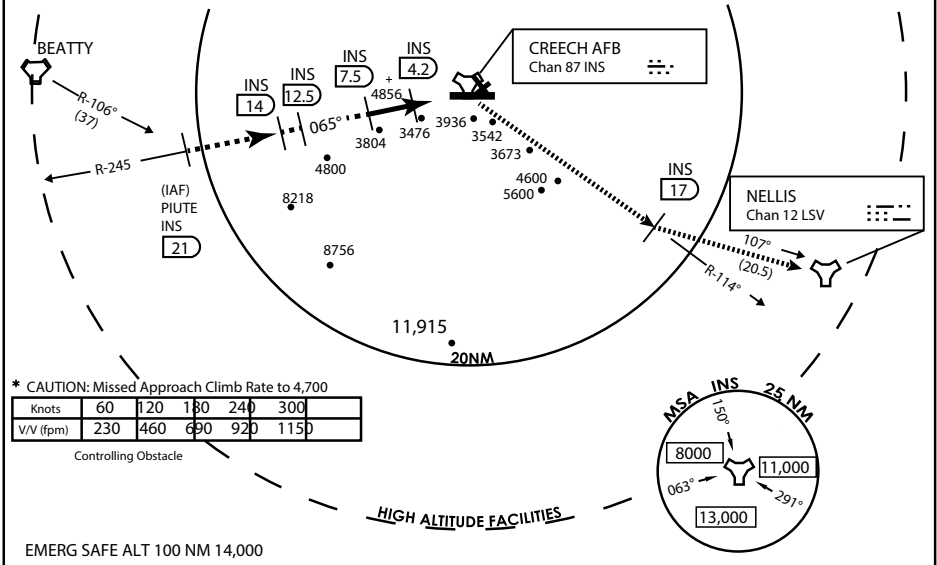
PILOT IS RESPONSIBLE FOR TERRAIN/OBSTACLE AVOIDANCE AND APPROPRIATE VFR CLOUD CLEARANCE FOR ALL

CAUTION: Descent gradients are greater than allowed under standard TERPS criteria and inbound course does not meet straight-in criteria

CAUTION: Final approach course crosses Runway centerline at MIDFIELD. Maneuvering left of course required prior to landing. Do not Maneuver farther north than the INS R- 258

Modified by viaBog 66 for use with DCS
NOT FOR REAL LIFE NAVIGATION

Modified by viaBog 66 for use with DCS
NOT FOR REAL LIFE NAVIGATION



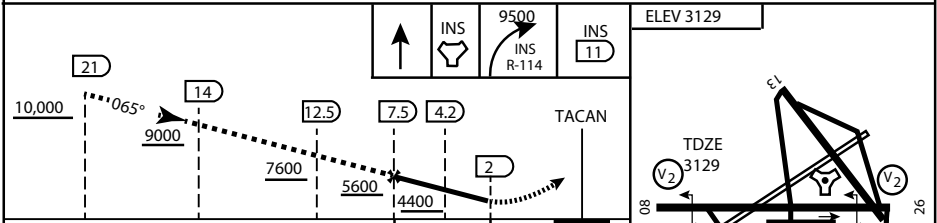
* CAUTION: Missed Approach Climb Rate to 4,700

Knots	60	120	180	240	300
V/V (fpm)	230	460	690	920	1150

Controlling Obstacle

HIGH ALTITUDE FACILITIES

EMERG SAFE ALT 100 NM 14,000



CATEGORY	A	B	C	D	E
S-8	3760-1 1/2	627 (700-1 1/2)	3760-1 3/4 627 (700-1 3/4)	3760-2 627 (700-2)	3760-2 1/4 627 (700-2 1/4)
CIRCLING	NOT AUTHORIZED				

ELEV 3129

3165

065° 6.3NM from FAF

MIRL Rwy 8-26

CITY OF INDIAN, NEVADA

INDIAN SPRINGS AF AUX (KINS)

(FOR DAY VFR USE ONLY)



AIRPORT DIAGRAM

476 VFG

CREECH AFB (KINS)
INDIAN SPRINGS, NEVADA

ATIS
 122.5
 CREECH TOWER
 118.4 360.7 38.65
 GND CON
 118.3 275.8
 CLNC DEL

FIELD
 ELEV
 3127

HOT
 CARGO
 PAD

VAR 12.5° E

WEST EOR

CONTROL
 TOWER
 BASE
 OPS

RPA LOLA WEST

RPA LOLA EAST

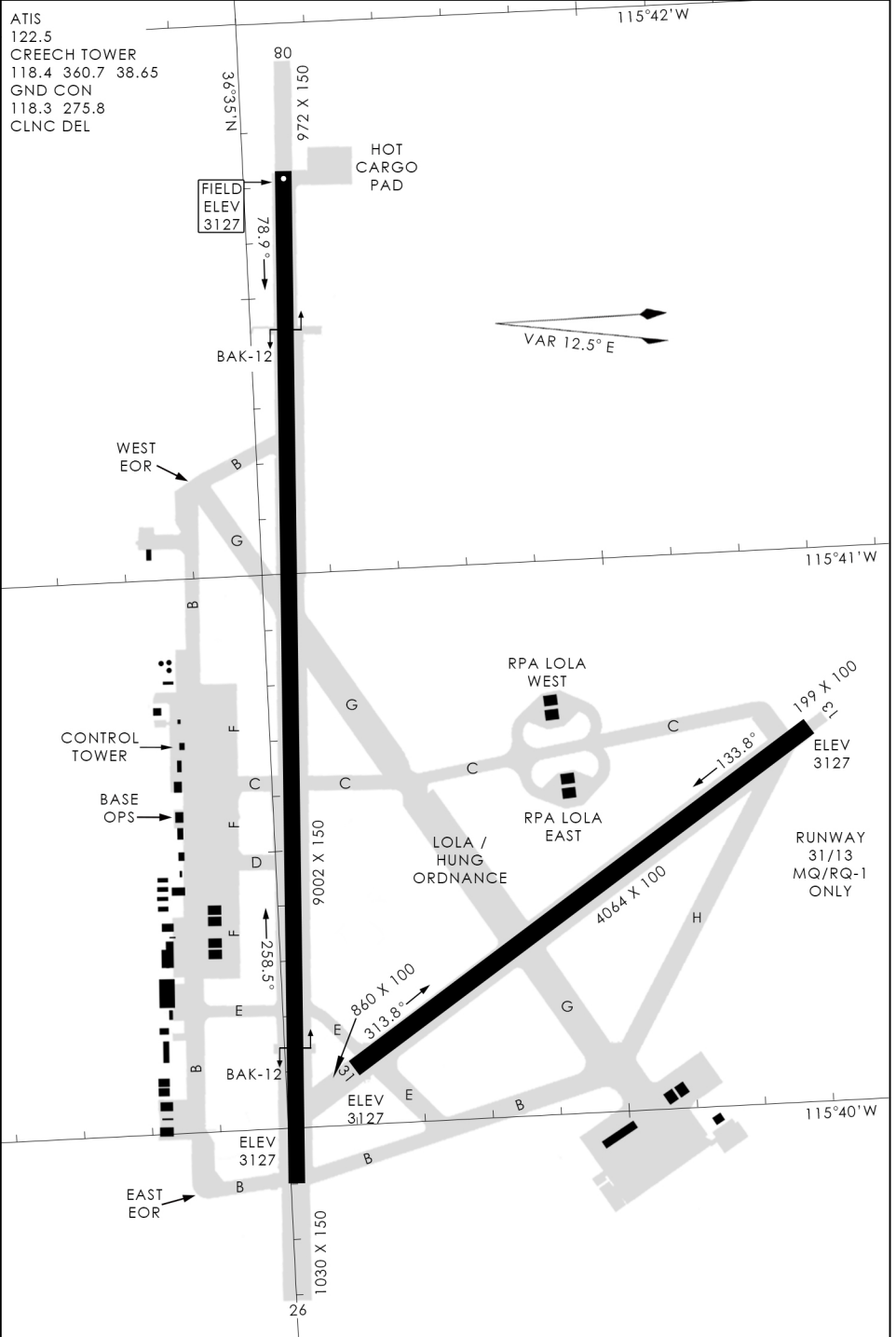
LOLA / HUNG ORDNANCE

RUNWAY
 31/13
 MQ/RQ-1
 ONLY

EAST EOR

476 VFG JAN 2019

476 VFG JAN 2019



AIRPORT DIAGRAM

INDIAN SPRINGS, NEVADA
CREECH AFB (KINS)