

MISSION DATA CARD

| OPORD | | Callsign | Mission | Date/Time | | |
|-------------|-------------|-----------|--------------------|-------------|--------|-------|
| 3378/2024 | | Monster 1 | Training | 042000NOV24 | | |
| Task | CAS | | | | Freq | |
| AO | R65 | | | | 132.15 | |
| Departure | | | Recovery | | | |
| FYTTR THREE | | | HI-TACAN Y RWY 21L | | | |
| # | Callsign | Pilot | IFF | TCN | LSR | NET |
| -1 | Monster 1-1 | Toolface | 1411 | 1Y | 1611 | 21/01 |
| -2 | Monster 1-2 | addiks | 1412 | 64Y | 1612 | 21/02 |
| -3 | Monster 1-3 | Crusader | 1413 | 64X | 1613 | 21/03 |

LOADOUT

| | | | |
|-----|-----------------------|------|---------|
| A/A | A9M | GUN | 100% CM |
| A/G | 7M282L, 2xA65D, 2xG12 | CHF | 300 |
| POD | A184, TGP | FLR | 180 |
| TKS | | FUEL | 80% |

TOLD

| | | | | | |
|------|---------|--------|-------|-------|------|
| | Takeoff | Target | Joker | Bingo | Land |
| FUEL | 8869 | | | | |

AIRBASES

| | Name | TCN | ATIS | GND | TWR | RWY | Elev | ILS |
|-----|------------|-----|-------|-------|-------|-----|------|-------|
| Dep | Nellis AFB | 12X | 270.1 | 275.8 | 327.0 | 21L | 1850 | 109.1 |
| Arr | Nellis AFB | 12X | 270.1 | 275.8 | 327.0 | 21L | 1850 | 109.1 |

FLIGHTPLAN

| # | Name | Navaid/Coords/DME | ALT | TOT |
|---|--------|-------------------------------------|-------|-----|
| 1 | FYTTR | LSV 269/33 (N36 21.440 W115 41.470) | 14000 | |
| 2 | T65.01 | N36 41.328 W115 47.685 | | |
| 3 | DUDBE | N36 21.849 W115 20.581 | 11000 | |
| 4 | JENAR | N36 19.887 W114 55.708 | 4400 | |
| 5 | Nellis | N36 14.680 W115 01.500 | | |

COMMS

| Radio | Usage |
|-------|------------------|
| 1 | 132.15 |
| 2 | 11-3-4-16-11-4-3 |
| 3 | 32.00 |

NOTES

JTAC Warrior on 32.00

SUPPORT**Tanker**

| Callsign | TCN | Freq | ALT | TAS |
|----------|------------------------------------|--------|-------|-----|
| TEXACO 3 | 22Y | 300.05 | 15000 | 280 |
| Pos | AR-231V: BTY 126/37 (N3620 W11614) | | | |

OTHER FLIGHTS

| Callsign | Mission | Airframe | Freq | TCN | Grpld | Laser |
|-----------|--------------|------------|-----------------|------|-------|-------|
| Rattler 1 | Training | 2x AH-64D | 133.5 | 1/64 | | 125X |
| AO | LATNA, LATNG | Task | AR | | | |
| Raptor 1 | Training | 4x F-16C | 134.0 | 1/64 | | 162X |
| AO | BVR Range Y | Task | BVR | | | |
| Nazgul 6 | Training | 4x F-15E | 262.45 | 1/64 | | 156X |
| AO | R62 | Task | A/G Proficiency | | | |
| Tiger 1 | Training | 4x F/A-18C | 261.15 | 1/64 | | 155X |
| AO | BVR Range X | Task | BVR | | | |

RADIO CHANNELS

| # | Freq | Name |
|----|---------|--------------------------------|
| 1 | | Flight/Squadron specific |
| 2 | 289.4 | Nellis Clearance Delivery |
| 3 | 275.8 | Nellis Ground |
| 4 | 327.0 | Nellis Tower |
| 5 | 385.4 | Nellis Approach/Departure West |
| 6 | 273.55 | Nellis Approach/Departure East |
| 7 | 317.525 | Nellis Control -- Sally |
| 8 | 254.4 | Nellis Control-- Lee |
| 9 | 305.6 | SOF Bullseye |
| 10 | 343.725 | EMERGENCY SINGLE FRQ |
| 11 | 270.1 | Nellis ATIS |
| 12 | 360.625 | Creech AFB Tower |
| 13 | 250.1 | HAVE QUICK 13 |
| 14 | 251.1 | HAVE QUICK 14 |
| 15 | 252.1 | HAVE QUICK 15 |
| 16 | 377.8 | Blackjack |
| 17 | 265.0 | KC-135 AR-641A |
| 18 | 360.8 | KC-135MPRS AR-635 |
| 19 | 319.8 | KC-135MPRS AR-625 |
| 20 | 300.05 | KC-135 AR-231V |

| RAMROD | | | | | | | | | | |
|------------|------|-----|-----|----|----|-----|----|----|----|----|
| 0 | 1 | 2 | 3 | 4 | 5 | 6 | 7 | 8 | 9 | |
| P | L | A | Y | W | R | I | G | H | T | |
| KTC 1400 C | | | | | | | | | | |
| | 0 | 1 | 2 | 3 | 4 | 5 | 6 | 7 | 8 | 9 |
| A | QTIC | DNO | KUL | MS | XB | FJR | YV | AH | PG | EW |
| B | NTEF | JVP | ICB | OL | WX | DMU | AS | YG | RQ | HK |
| C | DKFS | UIA | RYM | LV | GH | OBW | TQ | XC | JN | EP |
| D | PGBM | NYT | AXU | HK | OS | LRC | DF | EJ | QV | IW |
| E | MWIC | QSG | XDV | NY | LF | UHP | TA | EK | BR | OJ |
| F | OHGF | JYN | KIA | RU | DE | CBT | VL | MW | PX | SQ |
| G | ELJF | GSM | WUD | RV | PY | XAH | TO | IQ | CK | BN |
| H | VNJD | KHR | ETQ | IG | YM | UFO | CX | BA | LS | WP |
| I | GCJD | QTB | VSM | LP | XO | YWA | UF | RI | HN | KE |
| J | UIOL | NBW | DTK | YV | JA | GSE | QP | MF | RH | CX |
| K | GYQV | CND | FTI | MK | RS | JOH | UP | AX | LE | WB |
| L | IPWN | YAF | QJT | LX | GS | DRB | VC | EU | OK | MH |
| M | WHRP | UOL | INM | KT | VB | EGC | DJ | SX | YQ | FA |
| N | LWPE | BJF | USD | GA | OC | KIT | RQ | HX | YM | VN |
| O | NEIH | LAV | CMG | QT | JS | OUP | YD | BX | WR | KF |
| P | TKJD | ISU | ALR | NP | BQ | XGO | CV | FM | HY | WE |
| Q | ARCL | BPK | OGY | MQ | HD | EFS | JX | WI | VU | NT |
| R | VDTK | GIO | FLJ | SU | PY | EXR | BH | MN | AQ | WC |
| S | ETYV | HFW | XOP | DU | KA | LCI | SM | NQ | BR | GJ |
| T | AWQS | JUG | PNF | IC | MK | HYO | BD | RX | EL | TV |
| U | HMVU | BAS | CTN | RW | OG | LIP | QY | EJ | KF | XD |
| V | IMNT | QLH | YCU | FX | GB | JAS | EK | OD | WV | PR |
| W | AXOS | VUN | GYJ | FW | QL | KMT | DP | CH | BR | IE |
| X | IKLN | MXP | GHD | SU | OJ | CEQ | AR | WF | BY | VT |
| Y | CVAB | YXE | LIS | JO | FW | NGH | RP | QM | TU | DK |

NAVAIDS

| Id | Name | Channel | Position | Elevation |
|-----------|---------------|----------------|--------------------|------------------|
| BCE | Bryce Canyon | 75 | N3741.35 W11218.23 | 9040 |
| BIH | Bishop | 33 | N3722.62 W11821.99 | 4114 |
| BLD | Boulder | 114 | N3559.75 W11451.82 | 3650 |
| BTY | Beatty | 94 | N3648.54 W11644.86 | 2925 |
| CDC | Cedar City | 120 | N3747.24 W11304.90 | 5463 |
| DAG | Daggett | 79 | N3457.75 W11634.69 | 1760 |
| EED | Needles | 99 | N3445.96 W11428.43 | 650 |
| GFS | Goffs | 91 | N3507.87 W11510.59 | 4019 |
| GRL | Groom Lake | 18 | N3713.91 W11548.16 | 4475 |
| HEC | Hector | 74 | N3447.83 W11627.78 | 1854 |
| ILC | Wilson Creek | 110 | N3815.02 W11423.65 | 9318 |
| INS | Creech AFB | 87 | N3635.20 W11540.12 | 3101 |
| LAS | McCarran Intl | 116 | N3604.78 W11509.59 | 2142 |
| LSV | Nellis | 12 | N3614.68 W11501.50 | 1864 |
| MLF | Milford | 58 | N3821.62 W11300.79 | 4977 |
| MMM | Mormon Mesa | 90 | N3646.16 W11416.65 | 2120 |
| MVA | Mina | 98 | N3833.92 W11801.97 | 7860 |
| OAL | Coale Dale | 124 | N3800.20 W11746.23 | 4800 |
| PGS | Peach Springs | 57 | N3537.48 W11332.67 | 4754 |
| TPH | Tonopah Muni | 119 | N3801.84 W11702.01 | 5330 |
| TQQ | Silverbow | 77 | N3748.00 W11647.00 | 5500 |
| UTI | St George | 23 | N3705.29 W11335.53 | 2871 |



RWY 3L-21R
 PCN 46 R/C/W/T
 RWY 3R-21L
 PCN 51 R/C/W/T
 2017

MN
 VAR 12.3° E
 (2014)

| PAR | RWY | CAT | MINIMA | | ARP | ELEV | Scale 1:35'500 | |
|-----|-----|---------|------------------------------|-------|---------------------------------|----------------------|---------------------------------|--|
| | 21L | A B D E | 2057 - 0.8 200 (200-0.8/1.6) | GS 3° | 36° 14.060° N 115° 01.058° W | 1857 [ft] 566 [m] | 0 300 600 900 1200 1500 [m] | |
| | 3R | A B D E | 2057 - 0.8 200 (200-0.8/1.6) | GS 3° | | | 0 1000 2000 3000 4000 5000 [ft] | |
| SRA | 21R | A C D E | 2257 - 1.2 350 (350-1.2/1.6) | | | | | |
| | 3L | A C D E | 2257 - 1.2 350 (350-1.2/1.6) | | | | | |

| RWY | TORA | TODA | ASDA | LDA | PSN | THR | ALS |
|-----|---------------------|---------------------|---------------------|---------------------|--------------|---------------|-----|
| 21L | 10051 [ft] 3063 [m] | 11051 [ft] 3368 [m] | 11051 [ft] 3368 [m] | 10051 [ft] 3063 [m] | 36°14.043' N | 115°01.018' W | ⊕ |
| 3R | 10120 [ft] 3084 [m] | 11120 [ft] 3398 [m] | 11120 [ft] 3398 [m] | 10120 [ft] 3084 [m] | 36°13.029' N | 115°02.038' W | |

| ATIS | NELLIS GROUND | NELLIS TOWER | NELLIS CONTROL | TACAN | ILS RWY 21L | NELLIS EAST | NELLIS WEST |
|-------------|-------------------|------------------|----------------|---------|-------------|-------------|-------------|
| 270.100 MHz | 275.800 121.800 | 327.000 132.55 | 317.525 | LSV 12X | 109.10 Mhz | 384.400 | 385.000 |

FYTTTR THREE DEPARTURE IFR CHART | VALID 2014 LAS VEGAS, NEVADA

ATIS
270.100
NELLIS GROUND
275.800
NELLIS TOWER
327.000
NELLIS CONTROL
317.525
NELLIS DEP/APP EAST
384.400
BLACKJACK
377.800



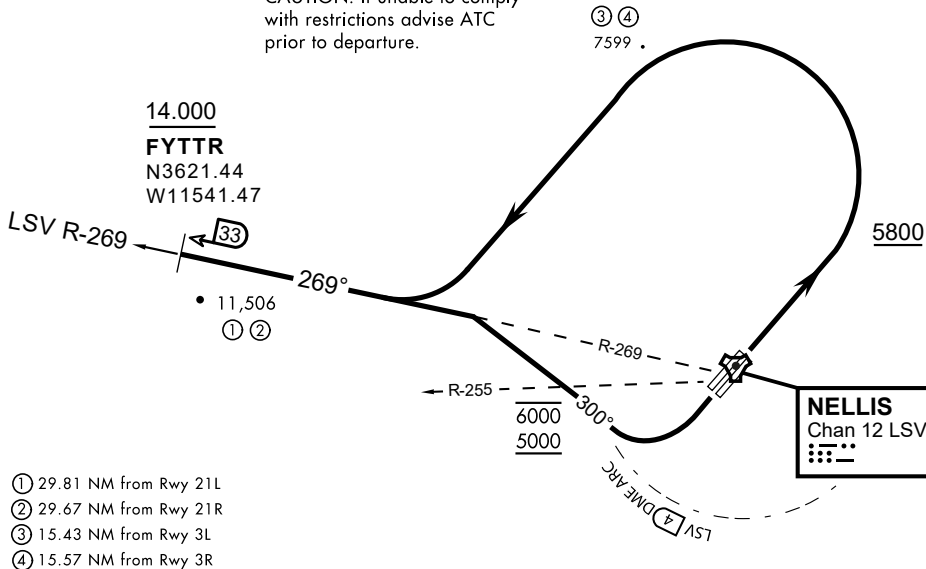
| Rwy | Knots | 60 | 120 | 180 | 240 | 300 | 360 |
|---------|----------|-----|-----|------|------|------|------|
| 3L (a) | V/V(fpm) | 394 | 788 | 1182 | 1576 | 1970 | 2364 |
| 3R (a) | V/V(fpm) | 392 | 784 | 1176 | 1568 | 1960 | 2352 |
| 21L (b) | V/V(fpm) | 388 | 776 | 1164 | 1552 | 1940 | 2328 |
| 21R (b) | V/V(fpm) | 390 | 780 | 1170 | 1560 | 1950 | 2340 |

Minimum Climb Rate

(a) to 9300

(b) to 13 500

CAUTION: If unable to comply with restrictions advise ATC prior to departure.



- ① 29.81 NM from Rwy 21L
- ② 29.67 NM from Rwy 21R
- ③ 15.43 NM from Rwy 3L
- ④ 15.57 NM from Rwy 3R

DEPARTURE ROUTE DESCRIPTION

TAKEOFF RWY 3L/R

- Fly runway heading until reaching 5,800'.
- Then climbing left turn to intercept LSV TACAN R-269 outbound.
- Cross FYTTTR at or above 14,000' or as assigned, then via assigned route.

TAKEOFF RWY 21L/21R

- Turn right to intercept LSV TACAN R-269 outbound.
- Remain within LSV 4 DME until joining LSV R-269
- Cross R-255 between 5,000' and 6,000'.
- Cross FYTTTR at or above 14,000' or as assigned, then via assigned route.

NOISE ABATEMENT PROCEDURES:

Fly according Nellis Noise Abatement instructions as published

HI-TACAN Y RWY 21L

| | | | |
|-------------------|---------------|---|------------------------------|
| TACAN LSV Chan 12 | APCH CRS 210° | Rwy ldg 21L 10,051 TDZE 1865 Arprt Elev 1869 | Rwy ldg 21R 10,120 TDZE 1869 |
|-------------------|---------------|---|------------------------------|

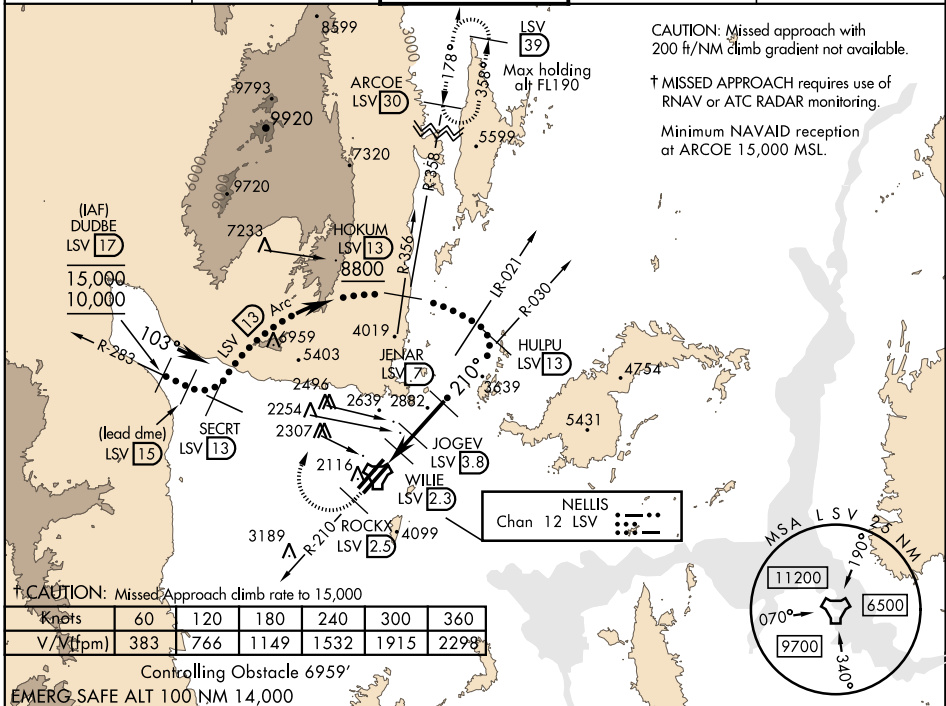
JAL-227 [USAF] NELLIS AFB (KLSV)

* When ALS inop, increase CAT CDE vis to 1 3/4 miles.
 ** Circling not authorized E of Rwy 3R-21L.



† MISSED APPROACH: Climb to 15,000, intercept LSV TACAN R-210 to 2.5 DME (ROCKX), then climbing right turn heading 020° to join LSV R-358 to ARCOE and hold, continue climb in hold to 15,000. Missed approach not for civil use.

| | | | | |
|------------|------------------------------|---------------------------|---------------------|----------------------|
| ATIS 270.1 | NELLIS APP CON 124.95 273.55 | NELLIS TOWER 132.55 327.0 | GND CON 121.8 275.8 | CLNC DEL 120.9 289.4 |
|------------|------------------------------|---------------------------|---------------------|----------------------|

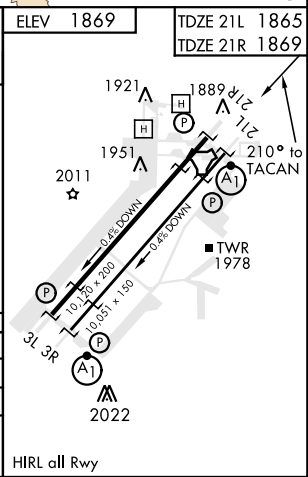
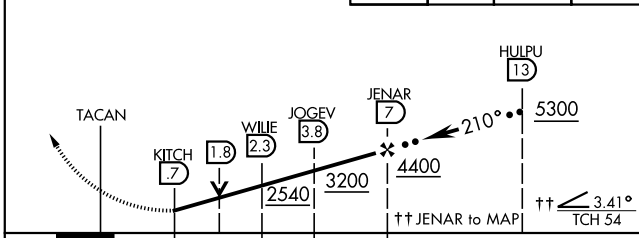


† CAUTION: Missed Approach climb rate to 15,000

| | | | | | | |
|------------|-----|-----|------|------|------|------|
| Knots | 60 | 120 | 180 | 240 | 300 | 360 |
| V/Vt (fpm) | 383 | 766 | 1149 | 1532 | 1915 | 2298 |

Controlling Obstacle 6959'
EMERG. SAFE ALT 100 NM 14,000

| | | | | | | |
|--|------------------|---------------|----------|----------------|-----------|--------------------------------|
| VGSi and descent angles not coincident (VGSi angle 3.00/TCH 54). | 15,000 LSV R-210 | ROCKX LSV 2.5 | hdg 020° | ARCOE R-358 30 | ELEV 1869 | TDZE 21L 1865 TDZE 21R 1869 |
|--|------------------|---------------|----------|----------------|-----------|--------------------------------|



| | | | |
|--------------|-------------------------------|------------------------|-------------------------|
| CATEGORY | C | D | E |
| S-21L * | 2460-1 1/4 | 595 (600-1 1/4) | |
| SIDESTEP 21R | 2460-1 | 591 (600-1) | |
| CIRCLING ** | 2620-2 1/4 751 (800-2 1/4) | 2840-3 971 (1000-3) | 3040-3 1171 (1200-3) |

HI-TACAN Y RWY 21L

SW-4, 05 DEC 2019 to 02 JAN 2020

SW-4, 05 DEC 2019 to 02 JAN 2020