

MISSION DATA CARD

OPORD		Callsign		Mission		Date/Time		
3375/2024		Edelweiss 1		Training		041200NOV24		
Task	Training Flight (FPT Tool)					Freq		
AO						264.15		
Departure				Recovery				
FLEX 3 TURNOUT				HI-TACAN RWY 8				
#	Callsign		Pilot		IFF	TCN	LSR	NET
-1	Edelweiss 1-1		Remotex		1711	1Y	1681	01/01

LOADOUT

A/A						GUN	0% none
A/G						CHF	60
POD						FLR	120
TKS	4xFT300					FUEL	44%

TOLD

	Takeoff	Target	Joker	Bingo	Land
FUEL	15413	0	0	3000	2000

AIRBASES

	Name	TCN	ATIS	GND	TWR	RWY	Elev	ILS
Dep	Nellis AFB	12X	270.1	275.8	327.0	21L	1850	109.1
Arr	Creech AFB	87X	290.45	275.8	360.6			
Div	Nellis AFB	12X	270.1	275.8	327.0	21L	1850	109.1

FLIGHTPLAN

#	Name	Navaid/Coords/DME	ALT	TOT
1	GASS PEAK	LSV 309/12 (N36 24 08.400 W115 10 39.600)	7500	

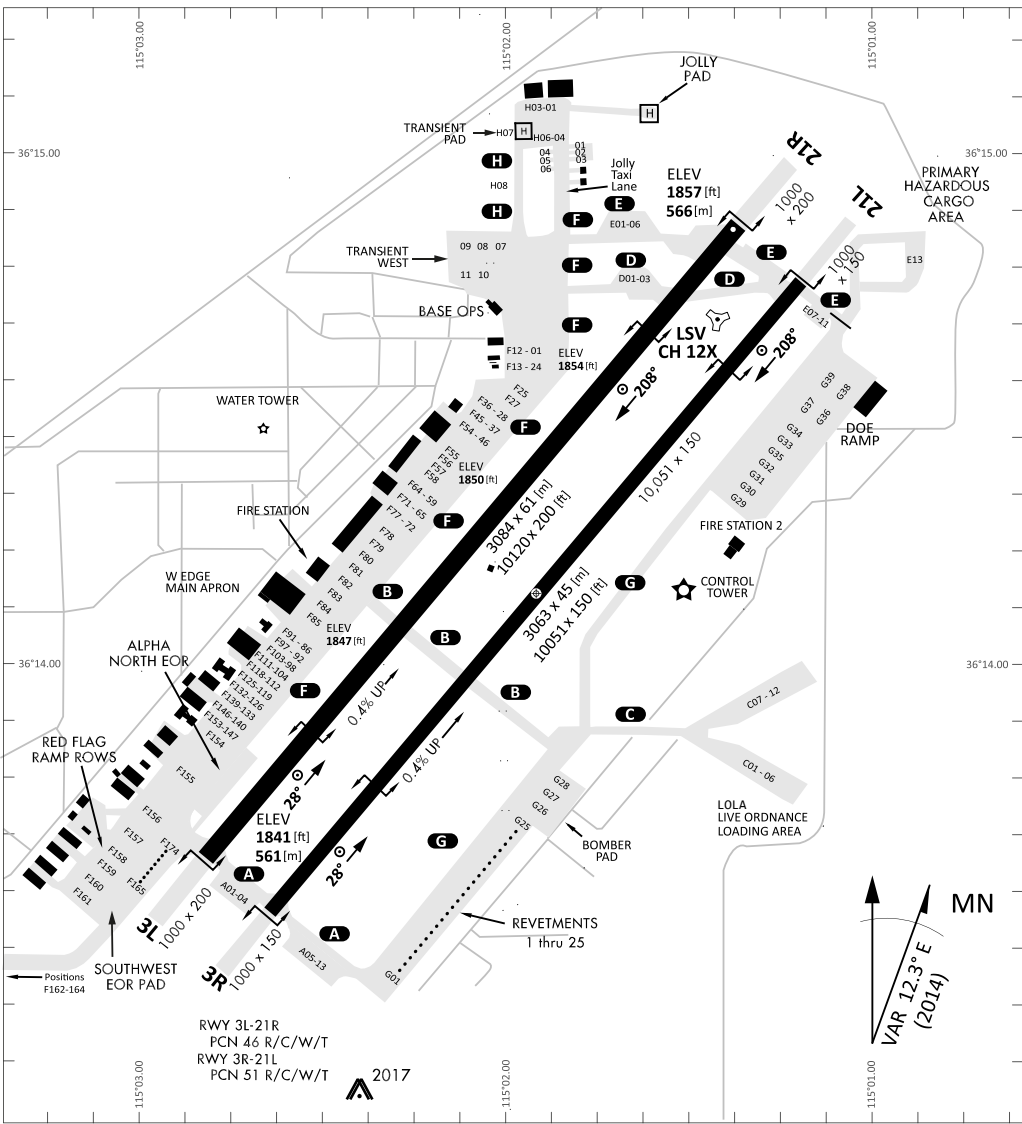
RADIO CHANNELS

#	Freq	Name
1		Flight/Squadron specific
2	289.4	Nellis Clearance Delivery
3	275.8	Nellis Ground
4	327.0	Nellis Tower
5	385.4	Nellis Approach/Departure West
6	273.55	Nellis Approach/Departure East
7	317.525	Nellis Control -- Sally
8	254.4	Nellis Control-- Lee
9	305.6	SOF Bullseye
10	343.725	EMERGENCY SINGLE FRQ
11	270.1	Nellis ATIS
12	360.625	Creech AFB Tower
13	250.1	HAVE QUICK 13
14	251.1	HAVE QUICK 14
15	252.1	HAVE QUICK 15
16	377.8	Blackjack
17	265.0	KC-135 AR-641A
18	360.8	KC-135MPRS AR-635
19	319.8	KC-135MPRS AR-625
20	300.05	KC-135 AR-231V

RAMROD										
0	1	2	3	4	5	6	7	8	9	
P	L	A	Y	W	R	I	G	H	T	
KTC 1400 C										
	0	1	2	3	4	5	6	7	8	9
A	QTIC	DNO	KUL	MS	XB	FJR	YV	AH	PG	EW
B	NTEF	JVP	ICB	OL	WX	DMU	AS	YG	RQ	HK
C	DKFS	UIA	RYM	LV	GH	OBW	TQ	XC	JN	EP
D	PGBM	NYT	AXU	HK	OS	LRC	DF	EJ	QV	IW
E	MWIC	QSG	XDV	NY	LF	UHP	TA	EK	BR	OJ
F	OHGF	JYN	KIA	RU	DE	CBT	VL	MW	PX	SQ
G	ELJF	GSM	WUD	RV	PY	XAH	TO	IQ	CK	BN
H	VNJD	KHR	ETQ	IG	YM	UFO	CX	BA	LS	WP
I	GCJD	QTB	VSM	LP	XO	YWA	UF	RI	HN	KE
J	UIOL	NBW	DTK	YV	JA	GSE	QP	MF	RH	CX
K	GYQV	CND	FTI	MK	RS	JOH	UP	AX	LE	WB
L	IPWN	YAF	QJT	LX	GS	DRB	VC	EU	OK	MH
M	WHRP	UOL	INM	KT	VB	EGC	DJ	SX	YQ	FA
N	LWPE	BJF	USD	GA	OC	KIT	RQ	HX	YM	VN
O	NEIH	LAV	CMG	QT	JS	OUP	YD	BX	WR	KF
P	TKJD	ISU	ALR	NP	BQ	XGO	CV	FM	HY	WE
Q	ARCL	BPK	OGY	MQ	HD	EFS	JX	WI	VU	NT
R	VDTK	GIO	FLJ	SU	PY	EXR	BH	MN	AQ	WC
S	ETYV	HFW	XOP	DU	KA	LCI	SM	NQ	BR	GJ
T	AWQS	JUG	PNF	IC	MK	HYO	BD	RX	EL	TV
U	HMVU	BAS	CTN	RW	OG	LIP	QY	EJ	KF	XD
V	IMNT	QLH	YCU	FX	GB	JAS	EK	OD	WV	PR
W	AXOS	VUN	GYJ	FW	QL	KMT	DP	CH	BR	IE
X	IKLN	MXP	GHD	SU	OJ	CEQ	AR	WF	BY	VT
Y	CVAB	YXE	LIS	JO	FW	NGH	RP	QM	TU	DK

NAVAIDS

Id	Name	Channel	Position	Elevation
BCE	Bryce Canyon	75	N3741.35 W11218.23	9040
BIH	Bishop	33	N3722.62 W11821.99	4114
BLD	Boulder	114	N3559.75 W11451.82	3650
BTY	Beatty	94	N3648.54 W11644.86	2925
CDC	Cedar City	120	N3747.24 W11304.90	5463
DAG	Daggett	79	N3457.75 W11634.69	1760
EED	Needles	99	N3445.96 W11428.43	650
GFS	Goffs	91	N3507.87 W11510.59	4019
GRL	Groom Lake	18	N3713.91 W11548.16	4475
HEC	Hector	74	N3447.83 W11627.78	1854
ILC	Wilson Creek	110	N3815.02 W11423.65	9318
INS	Creech AFB	87	N3635.20 W11540.12	3101
LAS	McCarran Intl	116	N3604.78 W11509.59	2142
LSV	Nellis	12	N3614.68 W11501.50	1864
MLF	Milford	58	N3821.62 W11300.79	4977
MMM	Mormon Mesa	90	N3646.16 W11416.65	2120
MVA	Mina	98	N3833.92 W11801.97	7860
OAL	Coale Dale	124	N3800.20 W11746.23	4800
PGS	Peach Springs	57	N3537.48 W11332.67	4754
TPH	Tonopah Muni	119	N3801.84 W11702.01	5330
TQQ	Silverbow	77	N3748.00 W11647.00	5500
UTI	St George	23	N3705.29 W11335.53	2871



RWY 3L-21R
 PCN 46 R/C/W/T
 RWY 3R-21L
 PCN 51 R/C/W/T
 2017

PAR	RWY	CAT	MINIMA		ARP	ELEV	Scale 1:35'500	
	21L	A B D E	2057 - 0.8 200	(200-0.8/1.6) GS 3°	36° 14.060° N 115° 01.058° W	1857 [ft] 566 [m]	0	300
	3R	A B D E	2057 - 0.8 200	(200-0.8/1.6) GS 3°			600	900
	21R	A C D E	2257 - 1.2 350	(350-1.2/1.6)			1200	1500 [m]
	3L	A C D E	2257 - 1.2 350	(350-1.2/1.6)			0	1000
							2000	3000
							4000	5000 [ft]

RWY	TORA	TODA	ASDA	LDA	PSN	THR	ALS
21L	10051 [ft] 3063 [m]	11051 [ft] 3368 [m]	11051 [ft] 3368 [m]	10051 [ft] 3063 [m]	36°14.043' N	115°01.018' W	⊕
3R	10120 [ft] 3084 [m]	11120 [ft] 3398 [m]	11120 [ft] 3398 [m]	10120 [ft] 3084 [m]	36°13.029' N	115°02.038' W	

ATIS	NELLIS GROUND	NELLIS TOWER	NELLIS CONTROL	TACAN	ILS RWY 21L	NELLIS EAST	NELLIS WEST
270.100 MHz	275.800 121.800	327.000 132.55	317.525	LSV 12X	109.10 Mhz	384.400	385.000

FLEX RWY03 VISUAL OPERATION CHART | VALID 2014

ATIS
270.100
NELLIS GROUND
275.800
NELLIS TOWER
327.000
NELLIS CONTROL
317.525
NELLIS DEP/APP EAST
384.400
BLACKJACK
377.800

VMC ONLY

PILOT RESPONSIBLE FOR TERRAIN AVOIDANCE

CAUTION: If unable to comply with restrictions advise ATC prior to departure.

Min WX
11200 MSL / 9400 AGL

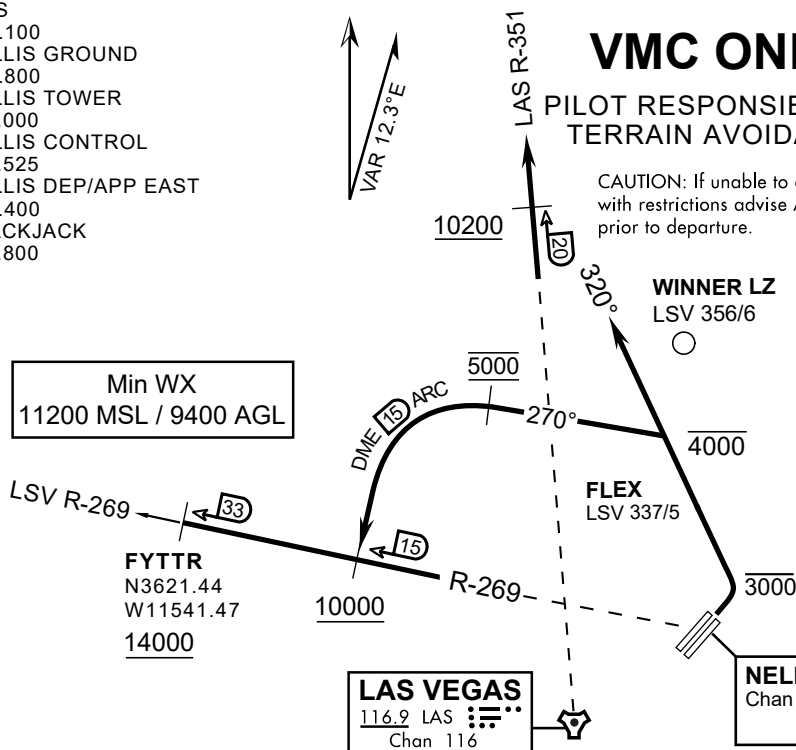
WINNER LZ
LSV 356/6

FLEX
LSV 337/5

FYTTR
N3621.44
W11541.47
14000

LAS VEGAS
116.9 LAS
Chan 116

NELLIS
Chan 12 LSV



▼ Request from GROUND prior to Taxi and APVD by TWR prior to TAKEOFF

1. Used for RWY 03 departures regardless of active runway to expedite the departure movement.
2. ATC may initiate to apply Simultaneous Opposite Direction Operations (SODO) when filed on FYTTR TWO or DREAM THREE and arrivals are landing RWY21.
3. ATC/aircrew may initiate to provide quick turn out to FYTTR TWO when departing RWY 03.
4. Procedure is VFR to IFR. During VFR portion aircrews are responsible for terrain clearance. CLASS B VFR separation services will be provided as appropriate.

FYTTR THREE:

1. Remain below 3000' MSL until north of Race Track and turned westbound
2. Turn left within 4NM of Nellis direct FLEX.
3. Fly north of FLEX at or below 4000' MSL and then heading 270°.
4. Intercept the LSV 15DME arc at or below 5000' MSL and arc south.
5. Intercept the LSV R-269/15 at or above 10,000' MSL and track outbound.
Aircrews are VFR until intercepting the LSV R-269 at or above 10,200' MSL.

DREAM FOUR:

1. Remain below 3000' MSL until north of Race Track
2. Fly north of FLEX at or below 4000' MSL and then heading 320°.
3. Intercept the LSV R-349 (Ch 116) and comply with DREAM THREE restrictions.
Aircrews are VFR until crossing the LSV R-349/20 at or above 10,200' MSL
4. If unable to comply with restrictions, maintain VFR and advise approach.
5. All FLEX Turnouts to the DREAM FOUR will comply with RWY 21 DREAM FOUR (intercept LAS R-351) outbound) regardless of active runway.

FLEX TURNOUT 03 DEPARTURE AND TRANSITIONS



INDIAN SPRINGS, NEVADA

TACAN INS Chan 87	APCH CRS 065°	Rwy ldg TDZE 3133	9002 3133
		Arpt Elev 3113	

INDIAN SPRINGS AF AUX (KINS)

▼ * MISSED APPROACH: Straight ahead to INS TACAN, intercept INS R-outbound, cross 17 DME at or above 9500, then direkt KSV TACAN 114

NELLIS CON

CREECH AFB TOWER
118.30 60.60

GND CON

NOT FOR CIVIL USE

FOR USE UNDER BASIC VFR
WEATHER MINIMUMS ONLY

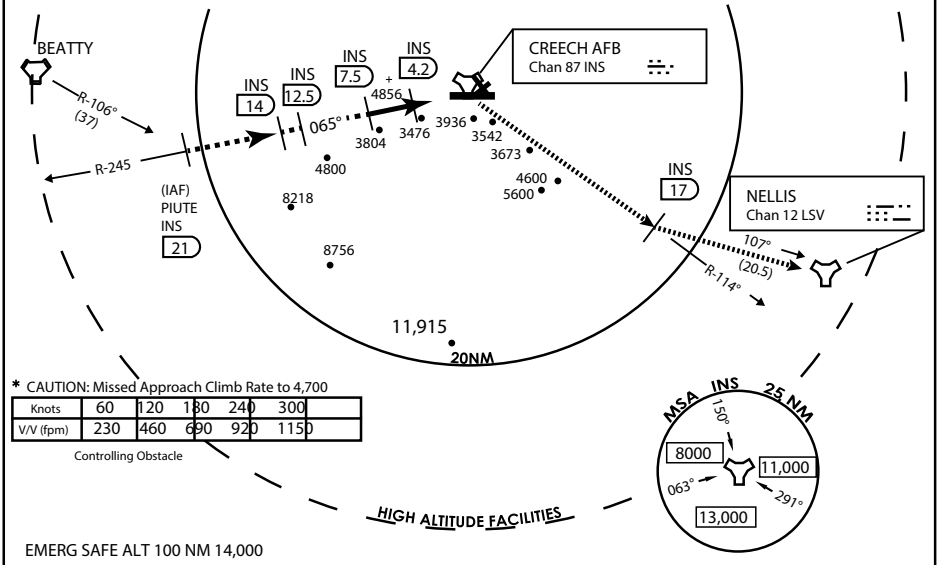
PILOT IS RESPONSIBLE FOR TERRAIN/OBSTACLE AVOIDANCE AND APPROPRIATE VFR CLOUD CLEARANCE FOR ALL

CAUTION: Descent gradients are greater than allowed under standard TERPS criteria and inbound course does not meet straight-in criteria

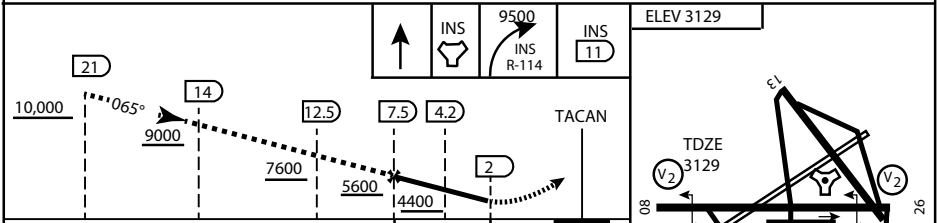
CAUTION: Final approach course crosses Runway centerline at MIDFIELD. Maneuvering left of course required prior to landing. Do not Maneuver farther north than the INS R- 258

Modified by viaBog 66 for use with DCS
NOT FOR REAL LIFE NAVIGATION

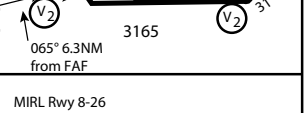
Modified by viaBog 66 for use with DCS
NOT FOR REAL LIFE NAVIGATION



EMERG SAFE ALT 100 NM 14,000



CATEGORY	A	B	C	D	E
S-8	3760-1 1/2	627 (700-1 1/2)	3760-1 3/4 627 (700-1 3/4)	3760-2 627 (700-2)	3760-2 1/4 627 (700-2 1/4)
CIRCLING	NOT AUTHORIZED				



CITY OF INDIAN, NEVADA

INDIAN SPRINGS AF AUX (KINS)

(FOR DAY VFR USE ONLY)



AIRPORT DIAGRAM

476 VFG

CREECH AFB (KINS)
INDIAN SPRINGS, NEVADA

ATIS
 122.5
 CREECH TOWER
 118.4 360.7 38.65
 GND CON
 118.3 275.8
 CLNC DEL

FIELD
 ELEV
 3127

HOT
 CARGO
 PAD

VAR 12.5° E

WEST EOR

CONTROL
 TOWER
 BASE
 OPS

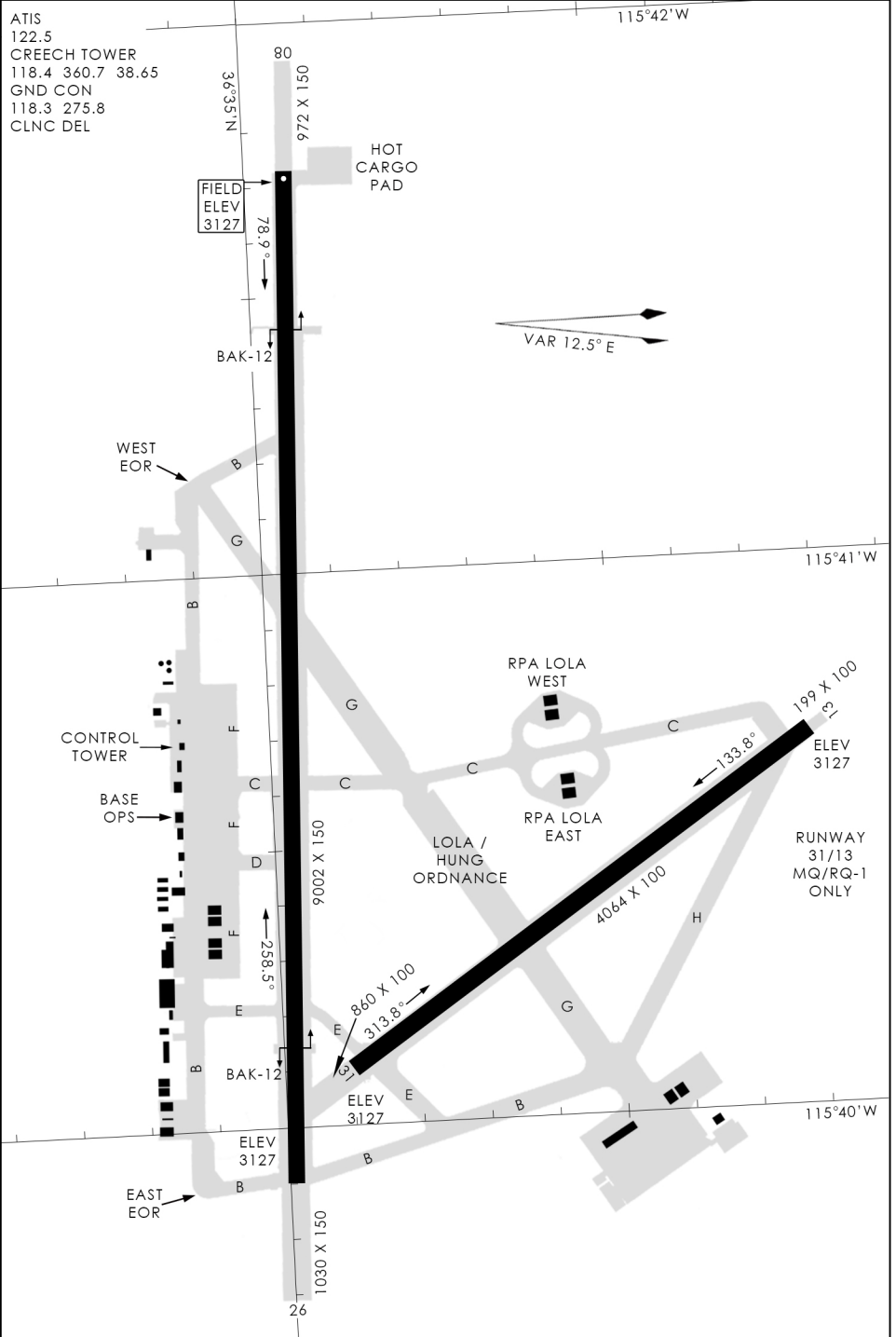
RPA LOLA WEST

RPA LOLA EAST

LOLA / HUNG ORDNANCE

RUNWAY
 31/13
 MQ/RQ-1
 ONLY

EAST EOR



476 VFG JAN 2019

476 VFG JAN 2019

AIRPORT DIAGRAM

INDIAN SPRINGS, NEVADA
CREECH AFB (KINS)

LAS VEGAS, NEVADA

TACAN RWY 21L

TACAN LSV Chan 12	APCH CRS 207°	Rwy Idg 10,055 TDZE 1866 Arprt Elev 1870
----------------------	------------------	--

AL-227 [USAF]

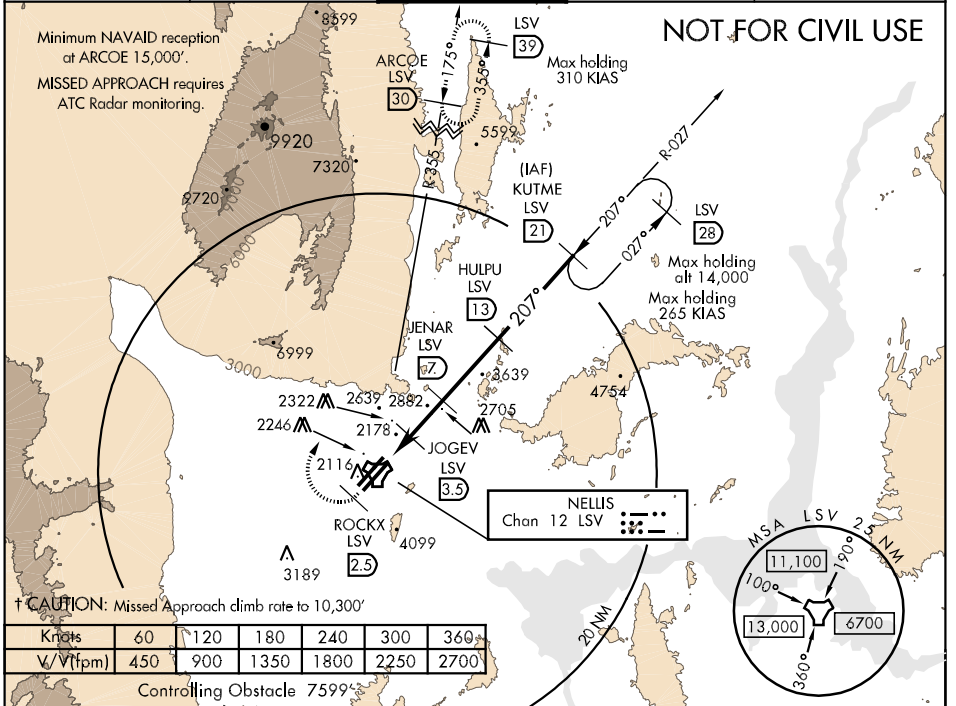
NELLIS AFB (KLSV)

▼ * When ALS inop, increase CAT AB RVR to 50, vis to 1 mile, CAT C vis to 1¼ miles, CAT D vis to 2 miles, CAT E vis to 2½ miles.
** Circling not authorized E of Rwy 3R-21L.

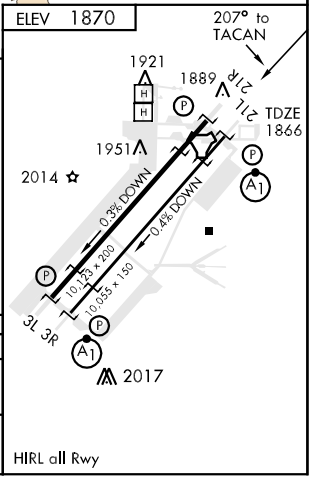
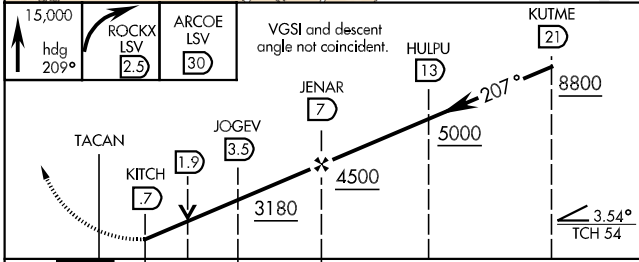


† MISSED APPROACH: Climb to 15,000, heading 209° to 2.5 DME (ROCKX), then climbing right turn heading 020° to join LSV TACAN R-355 to ARCOE and hold, continue climb in hold to 15,000.

ATIS 270.1	NELLIS APP CON 124.95 273.55	NELLIS TOWER 132.55 327.0	GND CON 121.8 275.8	CINC DEL 120.9 289.4
---------------	---------------------------------	------------------------------	------------------------	-------------------------



† CAUTION: Missed Approach climb rate to 10,300'



CATEGORY	A	B	C	D	E
S-21L *	2480/24 614 (700-½)		2480/60 614 (700-1¼)	2480-1½ 614 (700-1½)	2480-1¾ 614 (700-1¾)
CIRCLING **	2480-1 610 (700-1)	2680-1¼ 810 (900-1¼)	2680-2¼ 810 (900-2¼)	2680-2½ 810 (900-2½)	2940-3 1070(1100-3)

LAS VEGAS, NEVADA
Amdt 3 10266

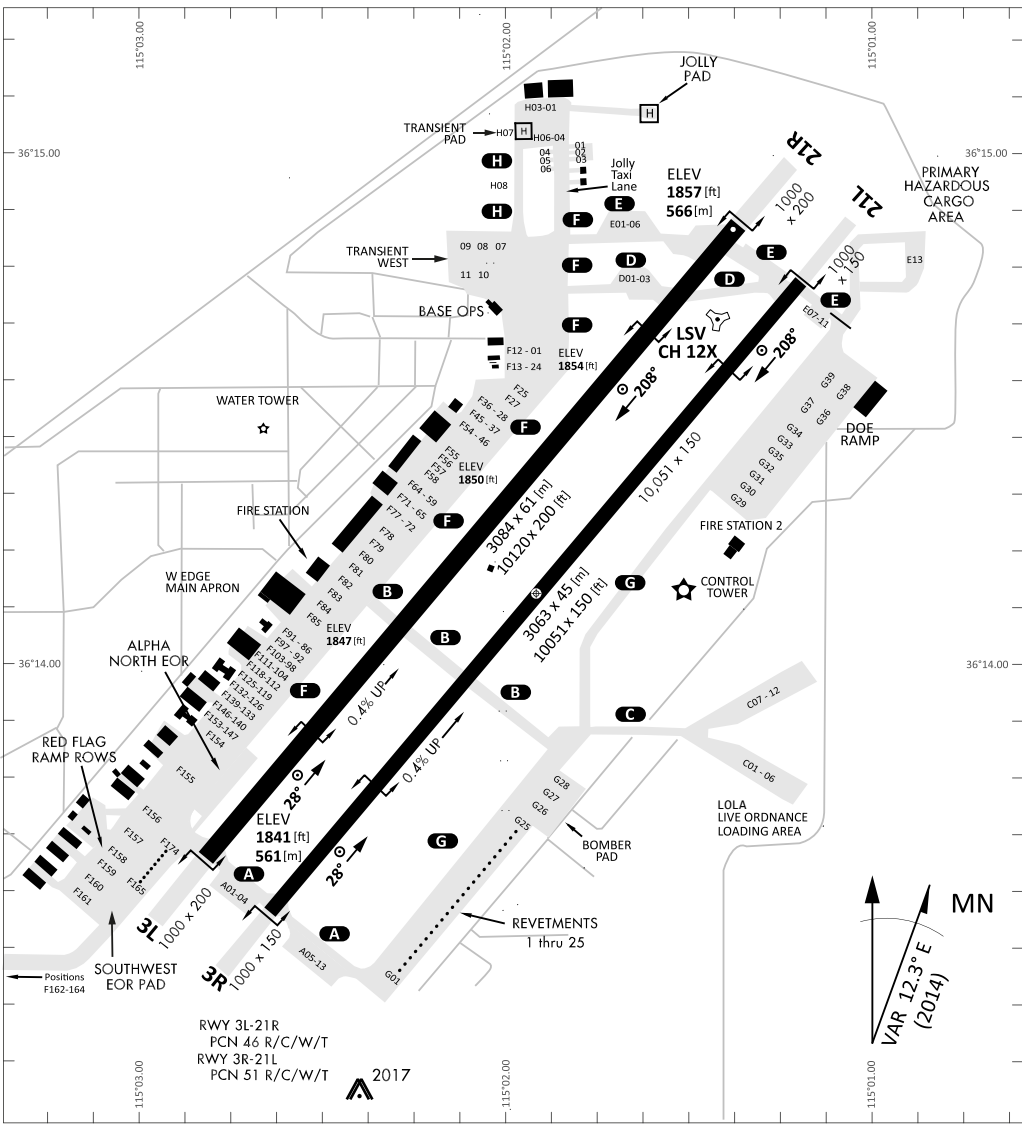
36°14'N-115°02'W

NELLIS AFB (KLSV)

TACAN RWY 21L

SW-4, 23 SEP 2010 to 21 OCT 2010

SW-4, 23 SEP 2010 to 21 OCT 2010



RWY 3L-21R
 PCN 46 R/C/W/T
 RWY 3R-21L
 PCN 51 R/C/W/T
 2017

PAR	RWY	CAT	MINIMA		ARP	ELEV	Scale 1:35'500	
	21L	A B D E	2057 - 0.8 200	(200-0.8/1.6) GS 3°	36° 14.060° N 115° 01.058° W	1857 [ft] 566 [m]	0	300
	3R	A B D E	2057 - 0.8 200	(200-0.8/1.6) GS 3°			600	900
	21R	A C D E	2257 - 1.2 350	(350-1.2/1.6)			1200	1500 [m]
	3L	A C D E	2257 - 1.2 350	(350-1.2/1.6)			0	1000
							2000	3000
							4000	5000 [ft]

RWY	TORA	TODA	ASDA	LDA	PSN	THR	ALS
21L	10051 [ft] 3063 [m]	11051 [ft] 3368 [m]	11051 [ft] 3368 [m]	10051 [ft] 3063 [m]	36°14.043° N	115°01.018° W	⊕
3R	10120 [ft] 3084 [m]	11120 [ft] 3398 [m]	11120 [ft] 3398 [m]	10120 [ft] 3084 [m]	36°13.029° N	115°02.038° W	

ATIS	NELLIS GROUND	NELLIS TOWER	NELLIS CONTROL	TACAN	ILS RWY 21L	NELLIS EAST	NELLIS WEST
270.100 MHz	275.800 121.800	327.000 132.55	317.525	LSV 12X	109.10 Mhz	384.400	385.000