

MISSION DATA CARD

OPORD		Callsign		Mission		Date/Time		
3374/2024		Tiger 1		Training		031736NOV24		
Task						Freq		
AO						261.15		
Departure				Recovery				
CAT				CASE I				
#	Callsign		Pilot		IFF	TCN	LSR	NET
-1	Tiger 1-1		Kosmoss		1011	1Y	1551	
-2	Tiger 1-2		Coach		1012	64Y	1552	

LOADOUT

A/A	2xA9X, A120C					GUN	100% HEI-T
A/G	3xG322B, G312B					CHF	120
POD	TGP					FLR	0
TKS	FPU-8A					FUEL	100%

TOLD

	Takeoff	Target	Joker	Bingo	Land
FUEL	13047				

AIRBASES

	Name	TCN	ATIS	GND	TWR	RWY	Elev	ILS
Dep	CVN-73 USS G. Washington	55X		ICLS 12	304.0			
Arr	CVN-73 USS G. Washington	55X		ICLS 12	304.0			
Div	Akrotiri AFB	107X	288.2	240.1	339.85	28	62	109.7

FLIGHTPLAN

#	Name	Navaid/Coords/DME	ALT	TOT
1	GBR.T1	N35 14.155 E033 43.317	148	

SUPPORT**Tanker**

Callsign	TCN	Freq	ALT	TAS
ARCO 2	41Y	360.8	FL220	400
Pos	ARCO2: (N3653 E03452)			

OTHER FLIGHTS

Callsign	Mission	Airframe	Freq	TCN	Grpld	Laser
Edelweiss 1	Training	1x AV-8B N/A	264.15	1/64		171X
AO		Task				

RADIO CHANNELS

#	Freq	Name
1		Flight/Squadron specific
2	288.2	Akrotiri ATIS
3	240.1	Akrotiri Ground
4	339.85	Aktrotiri Tower
5	335.05	Akrotiri Approach
6	360.1	Incirlik Tower
7	371.35	Incirlik Ground
8	377.475	Incirlik ATIS
9		No Preset
10	127.3	Paphos ATIS
11	353.8	Paphos Tower
12	304.0	CVN-73 George Washington
13	302.0	LHA-1 Tarawa
14	259.0	CV-59 Forrestal
15		No Preset
16	377.8	Overlord
17	265.0	KC-135 Texaco-1 medium/slow
18	319.8	KC-135 Arco-1
19	360.8	KC-135MPRS Arco-2
20	256.0	S-3B Recovery Tanker

RAMROD

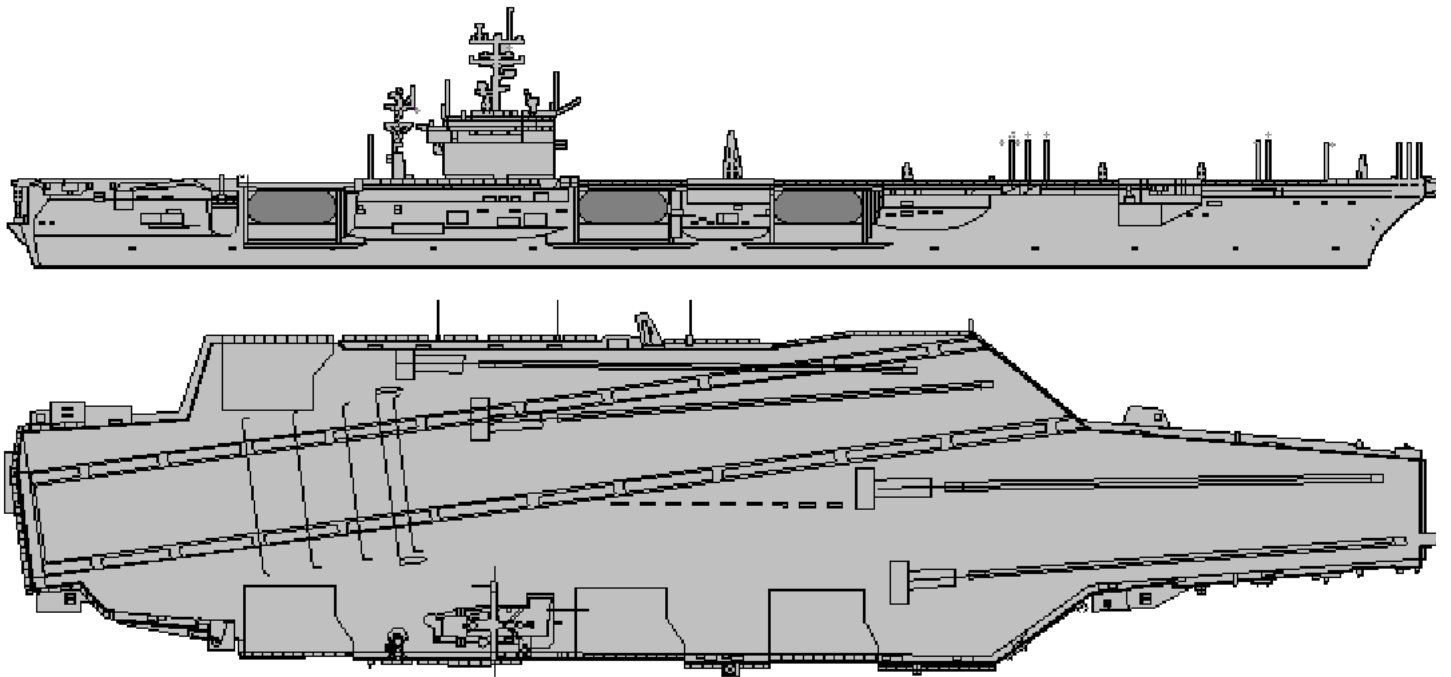
0	1	2	3	4	5	6	7	8	9
O	V	E	R	N	I	G	H	T	S

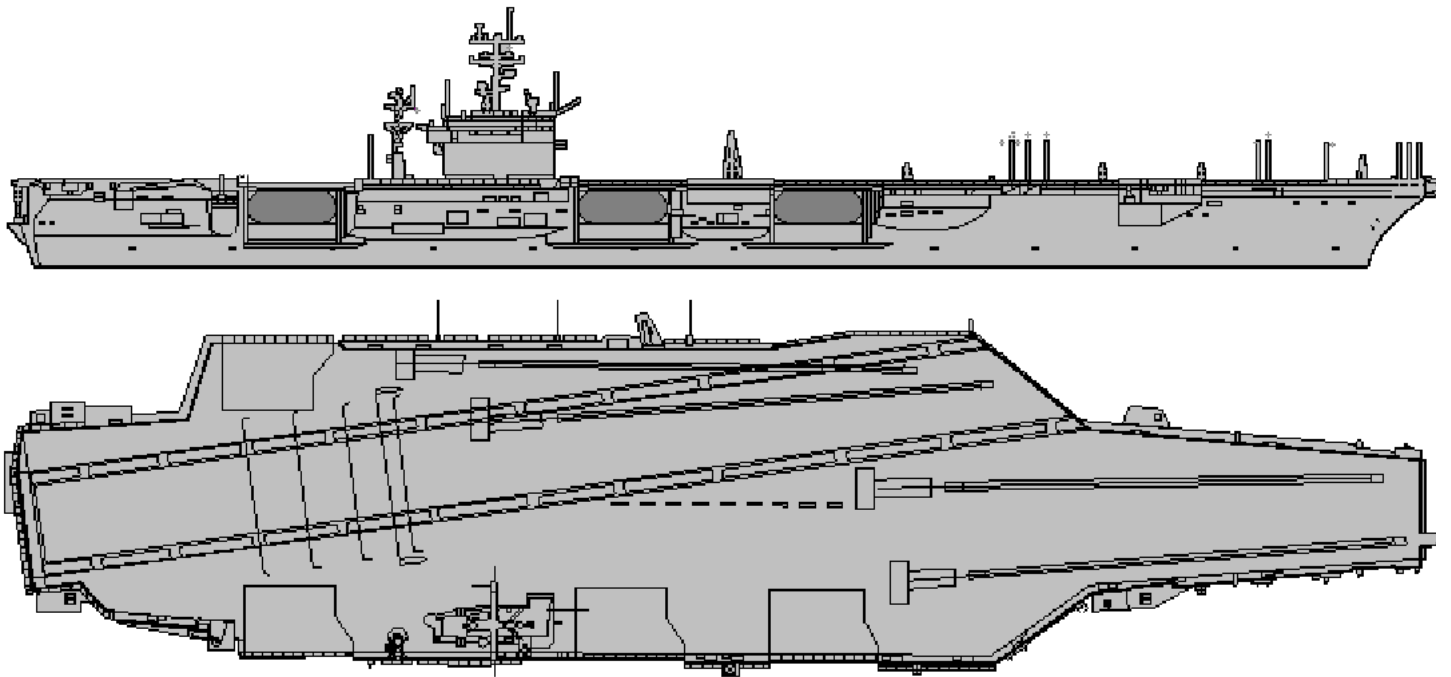
KTC 1400 C

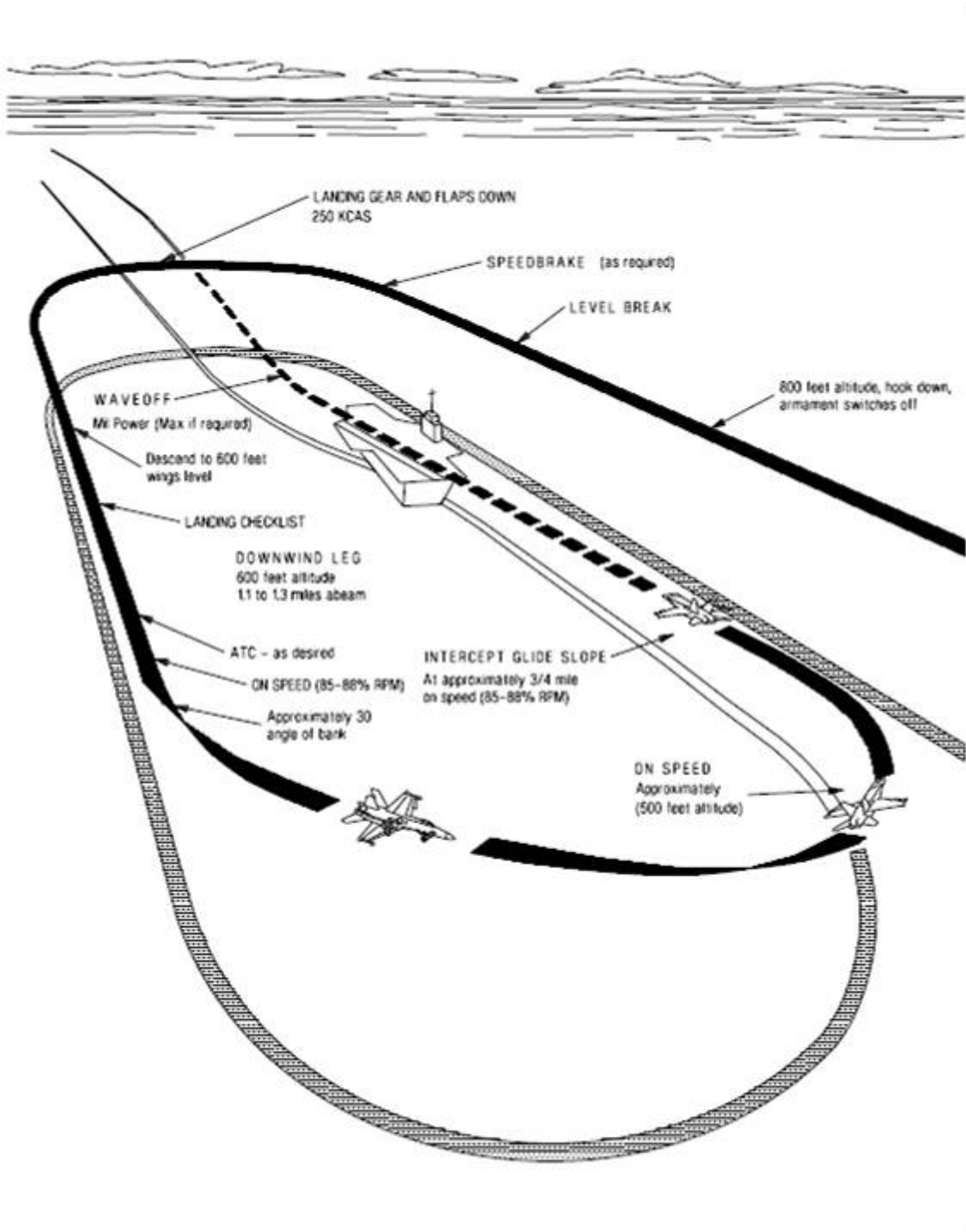
	0	1	2	3	4	5	6	7	8	9
A	ESGC	PMB	NLY	JW	QH	IRA	VX	UO	FT	KD
B	KLGN	VMI	QFW	HP	JD	YEC	BU	XA	RS	TO
C	GTXH	IVF	BRW	CS	LA	KNU	DO	ME	YP	QJ
D	VPLD	NWI	GOB	RF	XQ	TMC	EH	SU	AJ	KY
E	DFGM	NSP	VJK	WR	OX	CBH	AY	TE	UQ	LI
F	VNPT	MGB	CDJ	UX	FH	EWI	LO	YA	RQ	KS
G	DKJI	QAH	TPG	MX	UL	VRE	FY	OW	NB	CS
H	AMDR	LGY	INH	SW	FE	XQP	JU	OV	CT	KB
I	SYKL	OXA	DIG	VR	BW	JTM	QU	NP	CE	FH
J	JIAQ	VKT	YRD	FB	SW	XCU	MO	HL	NG	EP
K	DHAN	QSG	WFK	RO	PE	TUB	XJ	MI	CV	YL
L	NFDV	ILS	RAJ	XG	BC	MEQ	WY	PT	HK	UO
M	KTDJ	SMQ	REB	FY	AO	HPN	CV	UX	GI	LW
N	JBEI	XWP	MQY	AR	SN	ODV	UL	HC	GF	TK
O	PXWB	IRH	NJU	MS	LF	KDC	EA	VO	GT	YQ
P	QTKW	SNU	OYP	MV	RJ	HXC	DB	FL	EG	IA
Q	XJRF	LUD	IPV	HK	SW	EOQ	CT	BY	AG	NM
R	JDAX	QYM	CSW	LN	GV	PRT	HE	KB	OF	IU
S	UPYM	CXK	DGV	TH	JN	OSL	RA	IQ	BW	EF
T	VKCI	TWL	NEQ	UM	FR	AHB	JX	SD	PY	GO
U	QGPL	SKD	TFO	YH	JC	VNE	AW	MU	IR	BX
V	AWUQ	RIT	OGD	YV	EX	FNC	LB	MS	HK	PJ
W	YRIH	BXL	KMA	VP	SF	UTJ	GE	QO	CW	DN
X	GMVC	PIH	AUX	SL	DQ	NOB	RK	EW	YF	TJ
Y	EMAU	TXW	QRD	BY	SG	NOI	VJ	KL	FP	CH

NAVAIDS

Id	Name	Channel	Position	Elevation
DAN	Incirlik	21	N37 00.950 E035 26.883	243
AKR	Akrotiri	107	N34 34.765 E032 57.769	147
PHA	Paphos	79	N34 42.997 E032 28.963	35
RMD	Ramat David	84	N32 39.892 E035 11.265	136
OS66	Kuweires Military Aviation Institute	36	N36 11.362 E037 34.226	1200



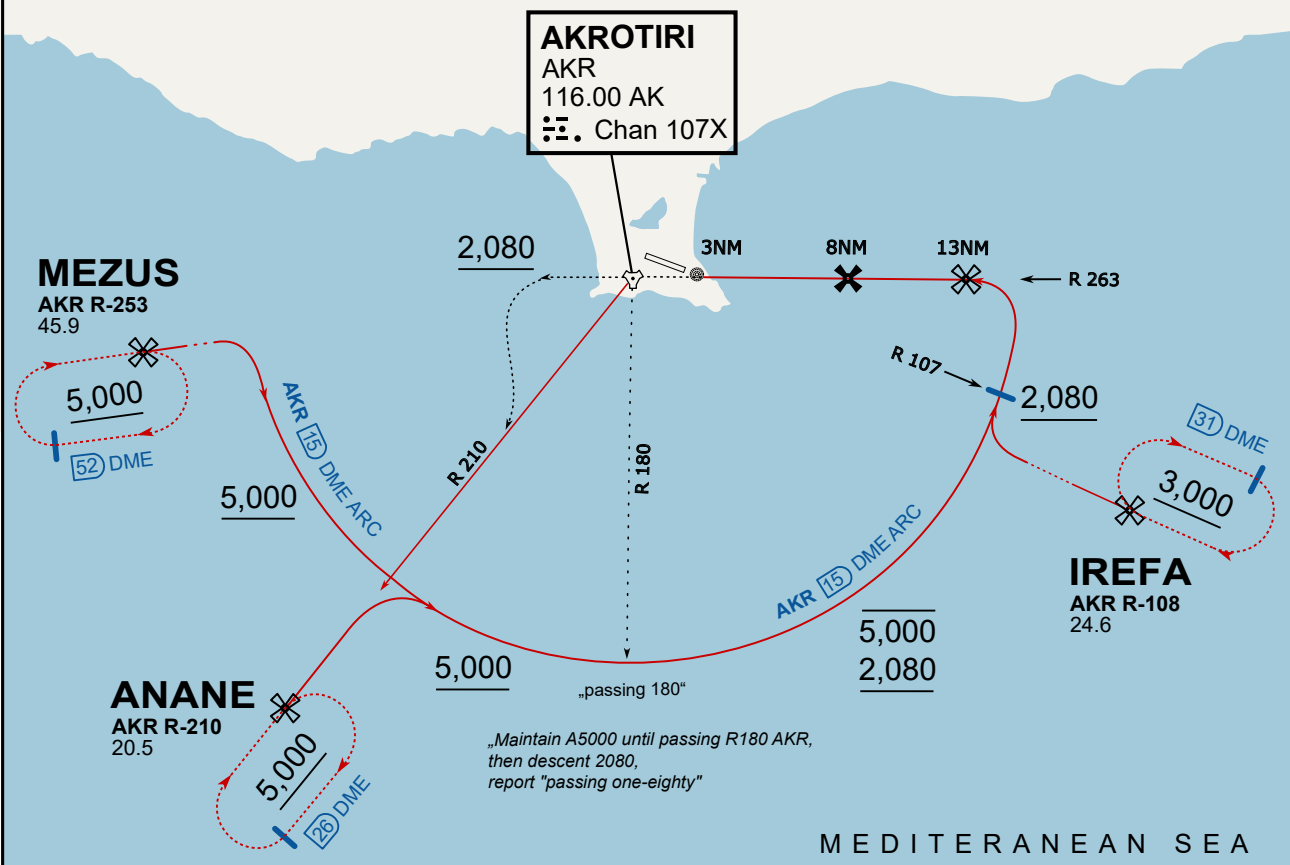




ATIS
288.200
AKROTIRI GROUND
122.100
AKROTIRI TOWER
339.850
APP (OVERLORD)
377.800

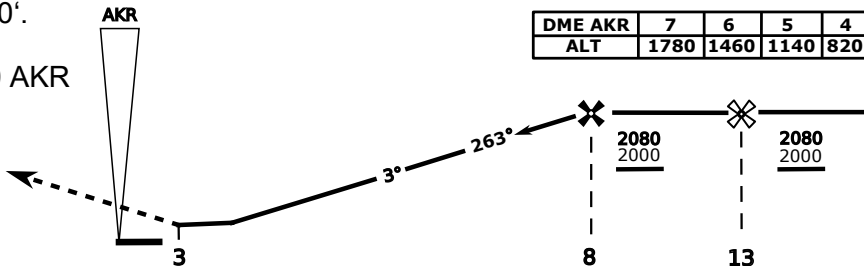
NOT FOR CIVIL USE

CAUTION: If unable to comply with restrictions advise ATC prior to departure.



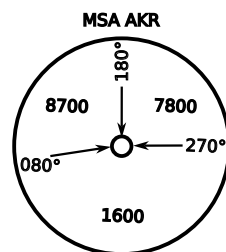
MEDITERANEA SEA

On Track 263° climb A 4.000'.
passing 2.080' (2.000' AAL)
turn left and intercept R-210 AKR
to ANANE.
Enter ANANE Holding.

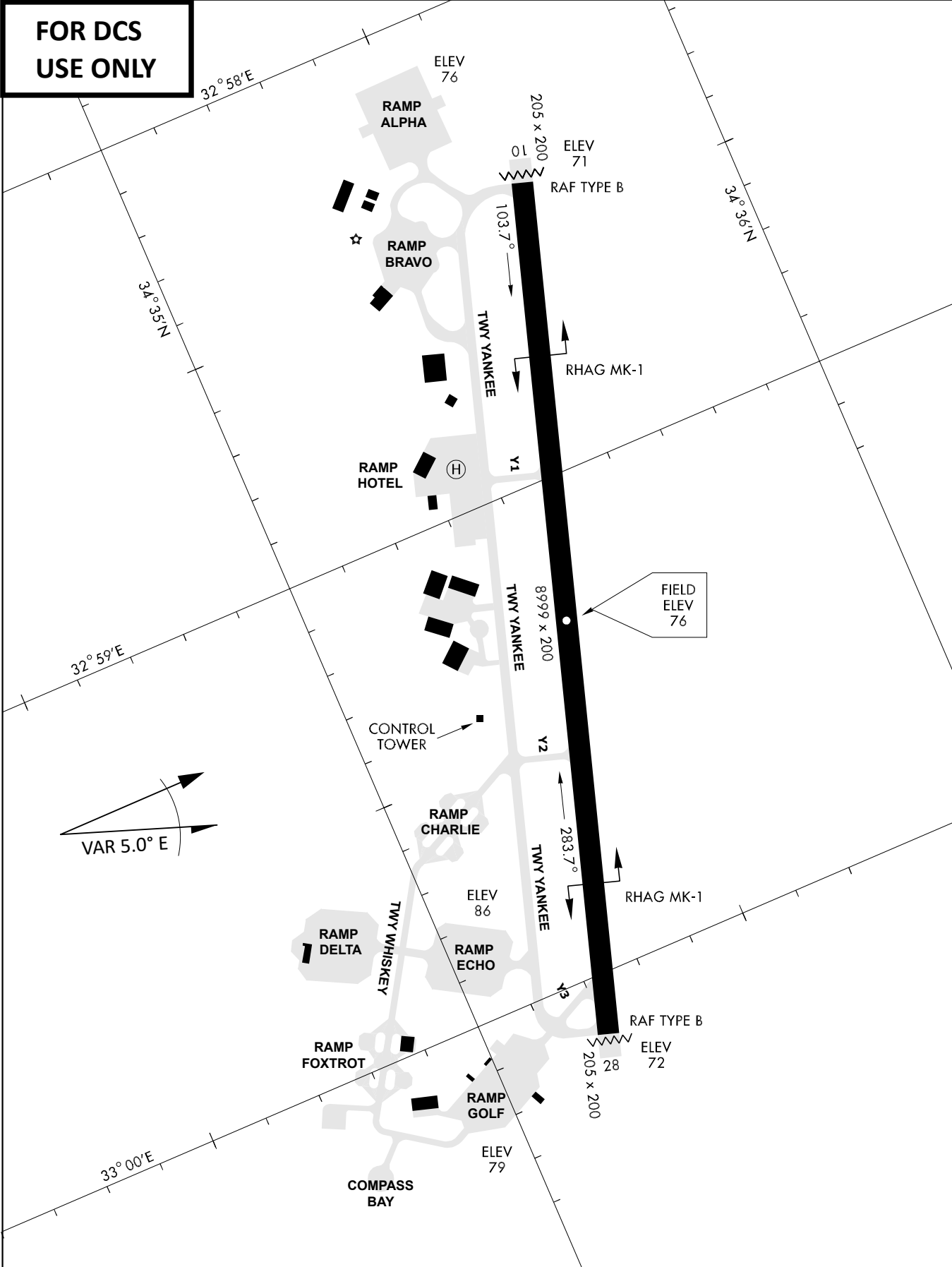


THR Elev 74ft DME AKR

CAT	TAC	CIRCLE	GS (kts)	80	120	150	180	210
A	500(430)	680 (610) 2000m	FAF - MAPt (4.1NM)	3:06	2:03	1:38	1:22	1:10
B	1300m		RoD (fpm)	420	640	800	950	1110
C	780 (710) 2600m	N/A	780 (710) 3300m	- CIRCLING PROHIBITED N of Rwy - final track is offset 20° right of RCL and Intcp 1.1NM before THR - when established on final contact tower - Timing not Auth to define MAPt				
D			780 (710) 3600m					
E			1380 (1310) 5000m					



**FOR DCS
 USE ONLY**



ATIS	AKROTIRI GND	AKROTIRI TWR	OVERLORD CONTROL	TACAN	FIELD ELEVATION
288.20 MHz	240.10 122.10	339.85 130.075	377.8	AKR 107X	75 [ft] 23 [m]