

**MISSION DATA CARD**

OPORD		Callsign		Mission		Date/Time		
3370/2024		Rattler 1		Training		042000NOV24		
Task	AR					Freq		
AO	LATNA, LATNG					133.5		
Departure				Recovery				
HELICOPTER DEP				HELICOPTER ARR				
#	Callsign		Pilot		IFF	TCN	LSR	NET
-1	Rattler 1-1		Mütze/Warblade		4611	1Y	1251	
-2	Rattler 1-2		Hudson/Laud		4612	64Y	1252	

**LOADOUT**

A/A					GUN	24% HEDP	
A/G	4xAGM114L, 4xAGM114K				CHF	30	
POD					FLR	60	
TKS	Robby				FUEL	100%	

**TOLD**

	Takeoff	Target	Joker	Bingo	Land
FUEL	3170				

**AIRBASES**

	Name	TCN	ATIS	GND	TWR	RWY	Elev	ILS
Dep	Nellis AFB	12X	270.1	275.8	327.0	21L	1850	109.1
Arr	Nellis AFB	12X	270.1	275.8	327.0	21L	1850	109.1

**FLIGHTPLAN**

#	Name	Navaid/Coords/DME	ALT	TOT
1	SOUTH GAP	LSV 160/2.9 (N36 11.940 W115 00.400)		
2	FARP (RP)	N36 12.680 W114 39.710		
3	Target	N36 18.660 W114 27.880		

**COMMS**

Radio	Usage
1	133.50
2	327.0 ; 377.8

**OTHER FLIGHTS**

Callsign	Mission	Airframe	Freq	TCN	Grpld	Laser
Raptor 1	Training	4x F-16C	134.0	1/64		162X
AO	BVR Range Y	Task	BVR			
Nazgul 6	Training	4x F-15E	262.45	1/64		156X
AO	R62	Task	A/G Proficiency			
Monster 1	Training	4x A-10C	132.15	1/64	21	161X
AO	R65	Task	CAS			
Tiger 1	Training	4x F/A-18C	261.15	1/64		155X
AO	BVR Range X	Task	BVR			

**RADIO CHANNELS**

#	Freq	Name
1		Flight/Squadron specific
2	289.4	Nellis Clearance Delivery
3	275.8	Nellis Ground
4	327.0	Nellis Tower
5	385.4	Nellis Approach/Departure West
6	273.55	Nellis Approach/Departure East
7	317.525	Nellis Control -- Sally
8	254.4	Nellis Control-- Lee
9	305.6	SOF Bullseye
10	343.725	EMERGENCY SINGLE FRQ
11	270.1	Nellis ATIS
12	360.625	Creech AFB Tower
13	250.1	HAVE QUICK 13
14	251.1	HAVE QUICK 14
15	252.1	HAVE QUICK 15
16	377.8	Blackjack
17	265.0	KC-135 AR-641A
18	360.8	KC-135MPRS AR-635
19	319.8	KC-135MPRS AR-625
20	300.05	KC-135 AR-231V

RAMROD										
0	1	2	3	4	5	6	7	8	9	
P	L	A	Y	W	R	I	G	H	T	
KTC 1400 C										
	0	1	2	3	4	5	6	7	8	9
A	QTIC	DNO	KUL	MS	XB	FJR	YV	AH	PG	EW
B	NTEF	JVP	ICB	OL	WX	DMU	AS	YG	RQ	HK
C	DKFS	UIA	RYM	LV	GH	OBW	TQ	XC	JN	EP
D	PGBM	NYT	AXU	HK	OS	LRC	DF	EJ	QV	IW
E	MWIC	QSG	XDV	NY	LF	UHP	TA	EK	BR	OJ
F	OHGF	JYN	KIA	RU	DE	CBT	VL	MW	PX	SQ
G	ELJF	GSM	WUD	RV	PY	XAH	TO	IQ	CK	BN
H	VNJD	KHR	ETQ	IG	YM	UFO	CX	BA	LS	WP
I	GCJD	QTB	VSM	LP	XO	YWA	UF	RI	HN	KE
J	UIOL	NBW	DTK	YV	JA	GSE	QP	MF	RH	CX
K	GYQV	CND	FTI	MK	RS	JOH	UP	AX	LE	WB
L	IPWN	YAF	QJT	LX	GS	DRB	VC	EU	OK	MH
M	WHRP	UOL	INM	KT	VB	EGC	DJ	SX	YQ	FA
N	LWPE	BJF	USD	GA	OC	KIT	RQ	HX	YM	VN
O	NEIH	LAV	CMG	QT	JS	OUP	YD	BX	WR	KF
P	TKJD	ISU	ALR	NP	BQ	XGO	CV	FM	HY	WE
Q	ARCL	BPK	OGY	MQ	HD	EFS	JX	WI	VU	NT
R	VDTK	GIO	FLJ	SU	PY	EXR	BH	MN	AQ	WC
S	ETYV	HFW	XOP	DU	KA	LCI	SM	NQ	BR	GJ
T	AWQS	JUG	PNF	IC	MK	HYO	BD	RX	EL	TV
U	HMVU	BAS	CTN	RW	OG	LIP	QY	EJ	KF	XD
V	IMNT	QLH	YCU	FX	GB	JAS	EK	OD	WV	PR
W	AXOS	VUN	GYJ	FW	QL	KMT	DP	CH	BR	IE
X	IKLN	MXP	GHD	SU	OJ	CEQ	AR	WF	BY	VT
Y	CVAB	YXE	LIS	JO	FW	NGH	RP	QM	TU	DK

**NAVAIDS**

<b>Id</b>	<b>Name</b>	<b>Channel</b>	<b>Position</b>	<b>Elevation</b>
BCE	Bryce Canyon	75	N3741.35 W11218.23	9040
BIH	Bishop	33	N3722.62 W11821.99	4114
BLD	Boulder	114	N3559.75 W11451.82	3650
BTY	Beatty	94	N3648.54 W11644.86	2925
CDC	Cedar City	120	N3747.24 W11304.90	5463
DAG	Daggett	79	N3457.75 W11634.69	1760
EED	Needles	99	N3445.96 W11428.43	650
GFS	Goffs	91	N3507.87 W11510.59	4019
GRL	Groom Lake	18	N3713.91 W11548.16	4475
HEC	Hector	74	N3447.83 W11627.78	1854
ILC	Wilson Creek	110	N3815.02 W11423.65	9318
INS	Creech AFB	87	N3635.20 W11540.12	3101
LAS	McCarran Intl	116	N3604.78 W11509.59	2142
LSV	Nellis	12	N3614.68 W11501.50	1864
MLF	Milford	58	N3821.62 W11300.79	4977
MMM	Mormon Mesa	90	N3646.16 W11416.65	2120
MVA	Mina	98	N3833.92 W11801.97	7860
OAL	Coale Dale	124	N3800.20 W11746.23	4800
PGS	Peach Springs	57	N3537.48 W11332.67	4754
TPH	Tonopah Muni	119	N3801.84 W11702.01	5330
TQQ	Silverbow	77	N3748.00 W11647.00	5500
UTI	St George	23	N3705.29 W11335.53	2871



PAR	RWY	CAT	MINIMA	ARP	ELEV	Scale 1:35'500
	21L	A B D E	2057 - 0.8 200 (200-0.8/1.6) GS 3°	36° 14.060° N 115° 01.058° W	1857 [ft] 566 [m]	0 300 600 900 1200 1500 [m]
	3R	A B D E	2057 - 0.8 200 (200-0.8/1.6) GS 3°			0 1000 2000 3000 4000 5000 [ft]
SRA	21R	A C D E	2257 - 1.2 350 (350-1.2/1.6)			
	3L	A C D E	2257 - 1.2 350 (350-1.2/1.6)			

RWY	TORA	TODA	ASDA	LDA	PSN	THR	ALS
21L	10051 [ft] 3063 [m]	11051 [ft] 3368 [m]	11051 [ft] 3368 [m]	10051 [ft] 3063 [m]	36°14.043' N	115°01.018' W	⊕
3R	10120 [ft] 3084 [m]	11120 [ft] 3398 [m]	11120 [ft] 3398 [m]	10120 [ft] 3084 [m]	36°13.029' N	115°02.038' W	

ATIS	NELLIS GROUND	NELLIS TOWER	NELLIS CONTROL	TACAN	ILS RWY 21L	NELLIS EAST	NELLIS WEST
270.100 MHz	275.800   121.800	327.000   132.55	317.525	LSV 12X	109.10 Mhz	384.400	385.000

# HELICOPTER ARR/DEP VAD-CHART | VALID 2014

**NELLIS AFB (KLSV)**  
LAS VEGAS, NEVADA

ATIS  
270.100  
NELLIS GROUND  
275.800  
NELLIS TOWER  
327.000  
BLACKJACK  
377.800

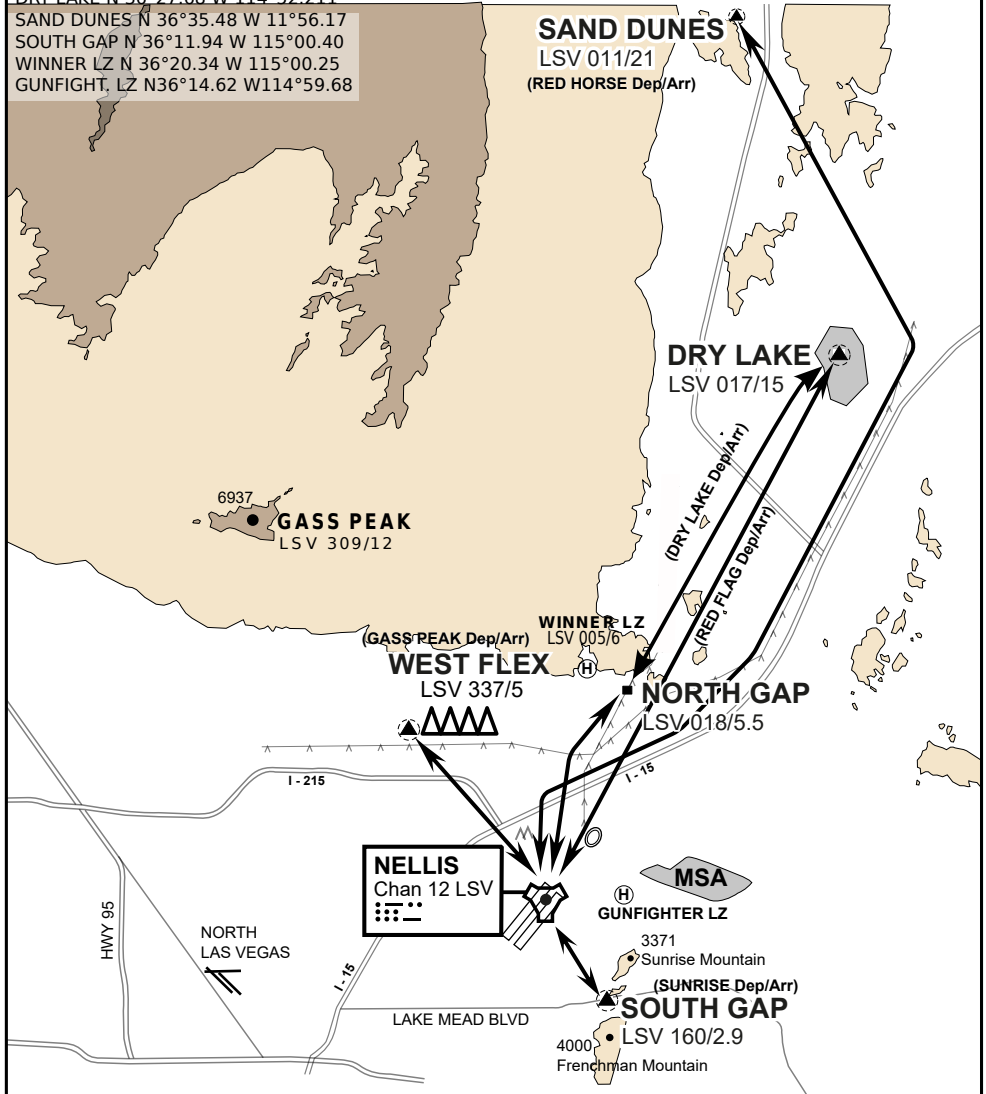
CAUTION: If unable to comply  
with restrictions advise ATC  
prior to departure.

## VMC ONLY

if below WX Minima request SVFR



JOLLY PAD N 36°15.08 W 115°01.65  
WEST FLEX N 36°18.64 W 115°08.00  
NORTH GAP N 36°20.00 W 114°59.30  
DRY LAKE N 36°27.68 W 114°52.211  
SAND DUNES N 36°35.48 W 11°56.17  
SOUTH GAP N 36°11.94 W 115°00.40  
WINNER LZ N 36°20.34 W 115°00.25  
GUNFIGHT, LZ N36°14.62 W114°59.68



vJABeG32NTRR NAV CHART

# HELICOPTER ARRIVAL AND DEPARTURES ROUTES

v.110 22APR20



# HELICOPTER ARR/DEP VAD-CHART | VALID 2014

**NELLIS AFB (KLSV)**  
LAS VEGAS, NEVADA

ATIS  
270.100  
NELLIS GROUND  
275.800  
NELLIS TOWER  
327.000  
BLACKJACK  
377.800

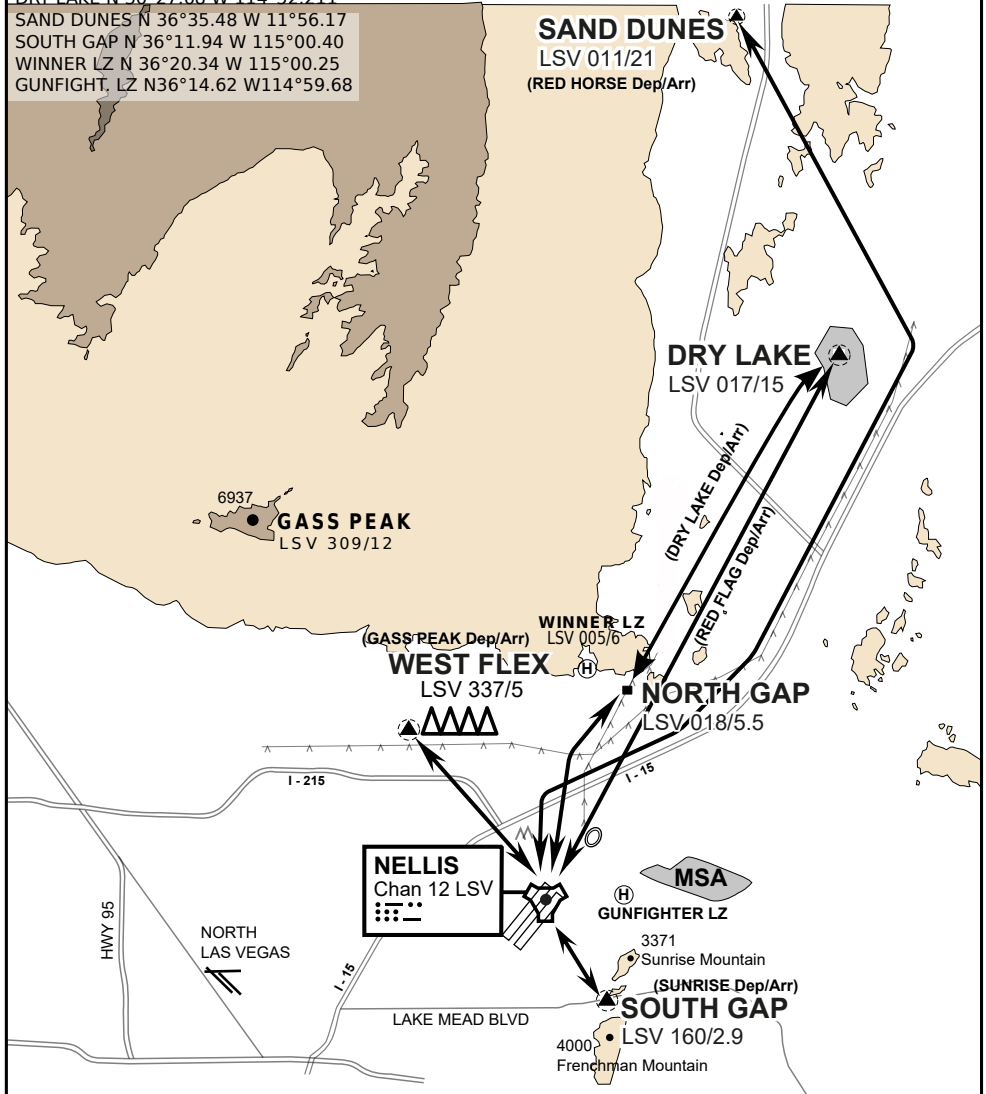
CAUTION: If unable to comply with restrictions advise ATC prior to departure.

## VMC ONLY

if below WX Minima request SVFR



JOLLY PAD N 36°15.08 W 115°01.65  
WEST FLEX N 36°18.64 W 115°08.00  
NORTH GAP N 36°20.00 W 114°59.30  
DRY LAKE N 36°27.68 W 114°52.211  
SAND DUNES N 36°35.48 W 11°56.17  
SOUTH GAP N 36°11.94 W 115°00.40  
WINNER LZ N 36°20.34 W 115°00.25  
GUNFIGHT, LZ N36°14.62 W114°59.68



vJABeG32NTRR NAV CHART

## HELICOPTER ARRIVAL AND DEPARTURES ROUTES

v.110 22APR20