

MISSION DATA CARD

OPORD		Callsign		Mission		Date/Time	
3369/2024		Tiger 2		Training		011924NOV24	
Task							Freq
AO							261.15
Departure				Recovery			
CAT				CASE I			
#	Callsign	Pilot		IFF	TCN	LSR	NET
-1	Tiger 2-1	Kosmoss		1021	1Y	1551	
-2	Tiger 2-2	Monte		1022	64Y	1552	

LOADOUT

A/A						GUN	
A/G						CHF	
POD						FLR	
TKS						FUEL	

TOLD

	Takeoff	Target	Joker	Bingo	Land
FUEL	10803				

AIRBASES

	Name	TCN	ATIS	GND	TWR	RWY	Elev	ILS
Dep	CVN-73 USS G. Washington	55X		ICLS 12	304.0			
Arr	CVN-73 USS G. Washington	55X		ICLS 12	304.0			
Div	Akrotiri AFB	107X	288.2	240.1	339.85	28	62	109.7

FLIGHTPLAN

#	Name	Navaid/Coords/DME	ALT	TOT
1	CHT.T1	N35 03.282 E033 37.172	602	

RADIO CHANNELS

#	Freq	Name
1		Flight/Squadron specific
2	288.2	Akrotiri ATIS
3	240.1	Akrotiri Ground
4	339.85	Aktrotiri Tower
5	335.05	Akrotiri Approach
6	360.1	Incirlik Tower
7	371.35	Incirlik Ground
8	377.475	Incirlik ATIS
9		No Preset
10	127.3	Paphos ATIS
11	353.8	Paphos Tower
12	304.0	CVN-73 George Washington
13	302.0	LHA-1 Tarawa
14	259.0	CV-59 Forrestal
15		No Preset
16	377.8	Overlord
17	265.0	KC-135 Texaco-1 medium/slow
18	319.8	KC-135 Arco-1
19	360.8	KC-135MPRS Arco-2
20	256.0	S-3B Recovery Tanker

RAMROD

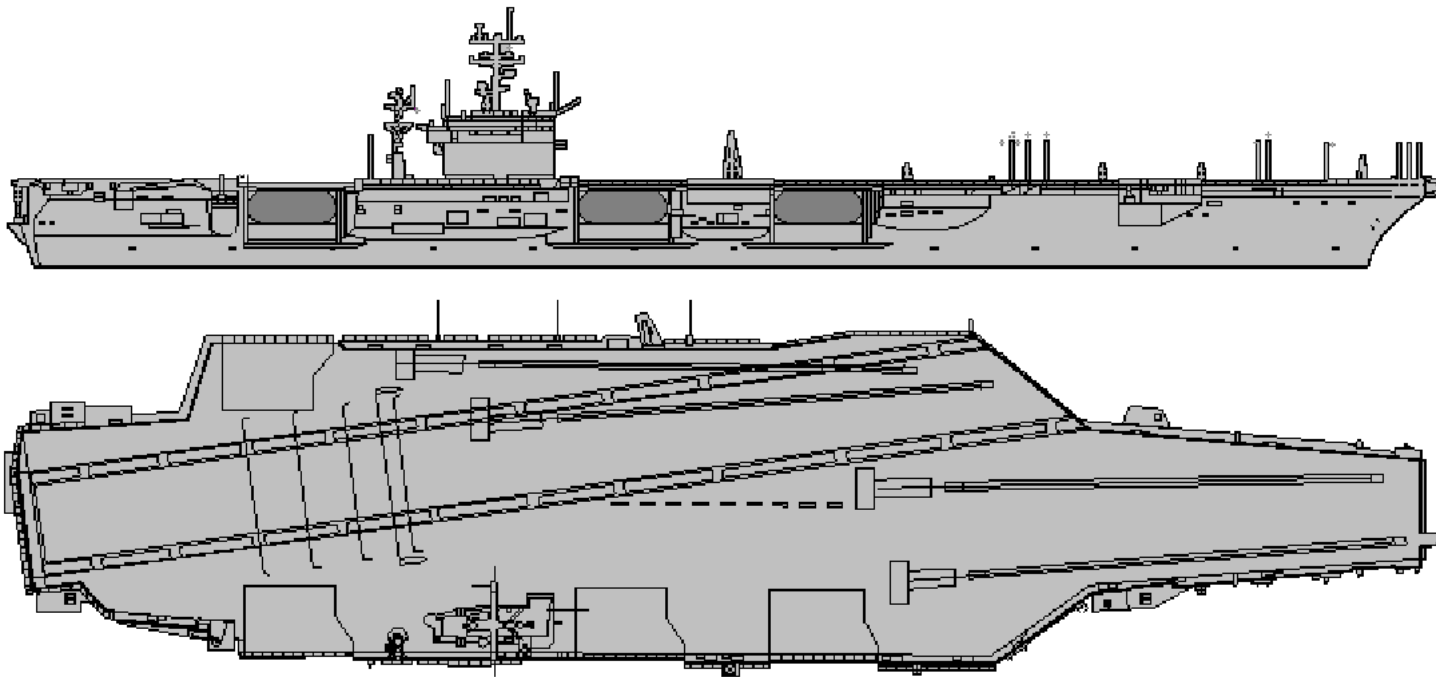
0	1	2	3	4	5	6	7	8	9
P	R	O	C	L	A	I	M	E	D

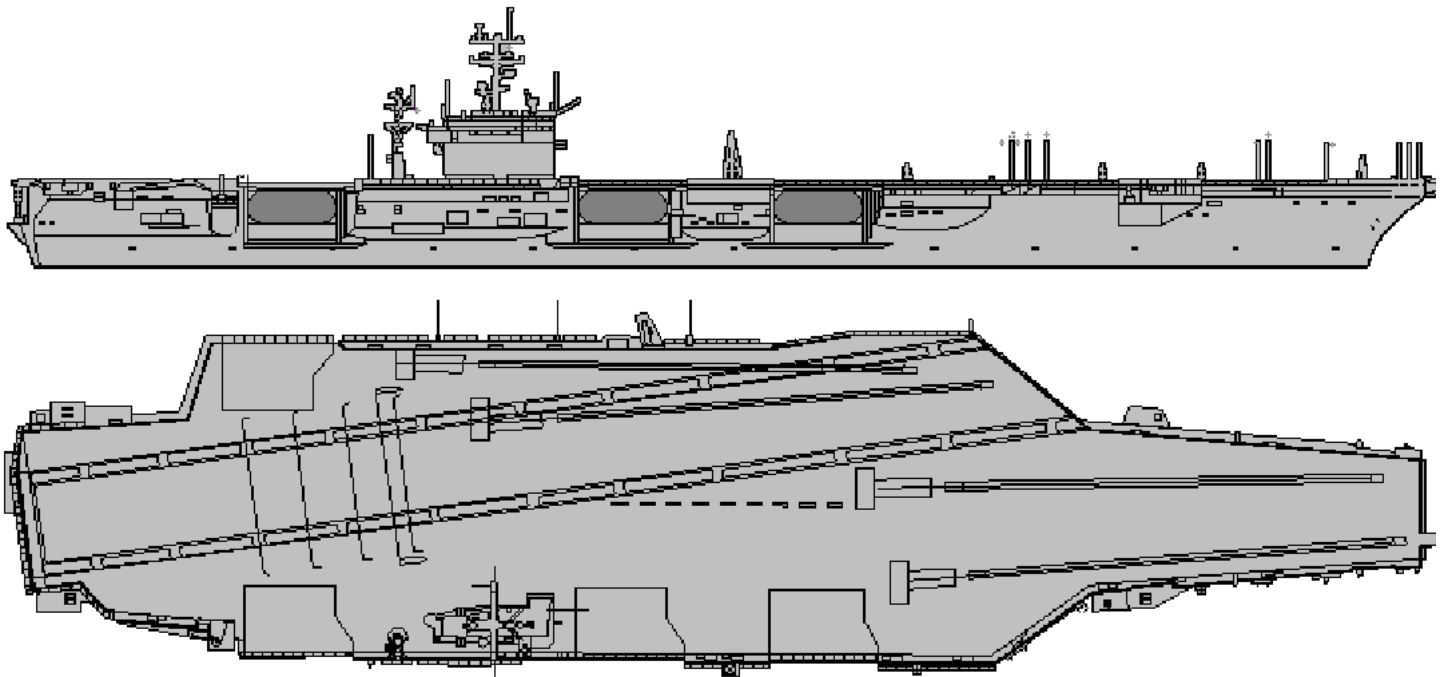
KTC 1400 C

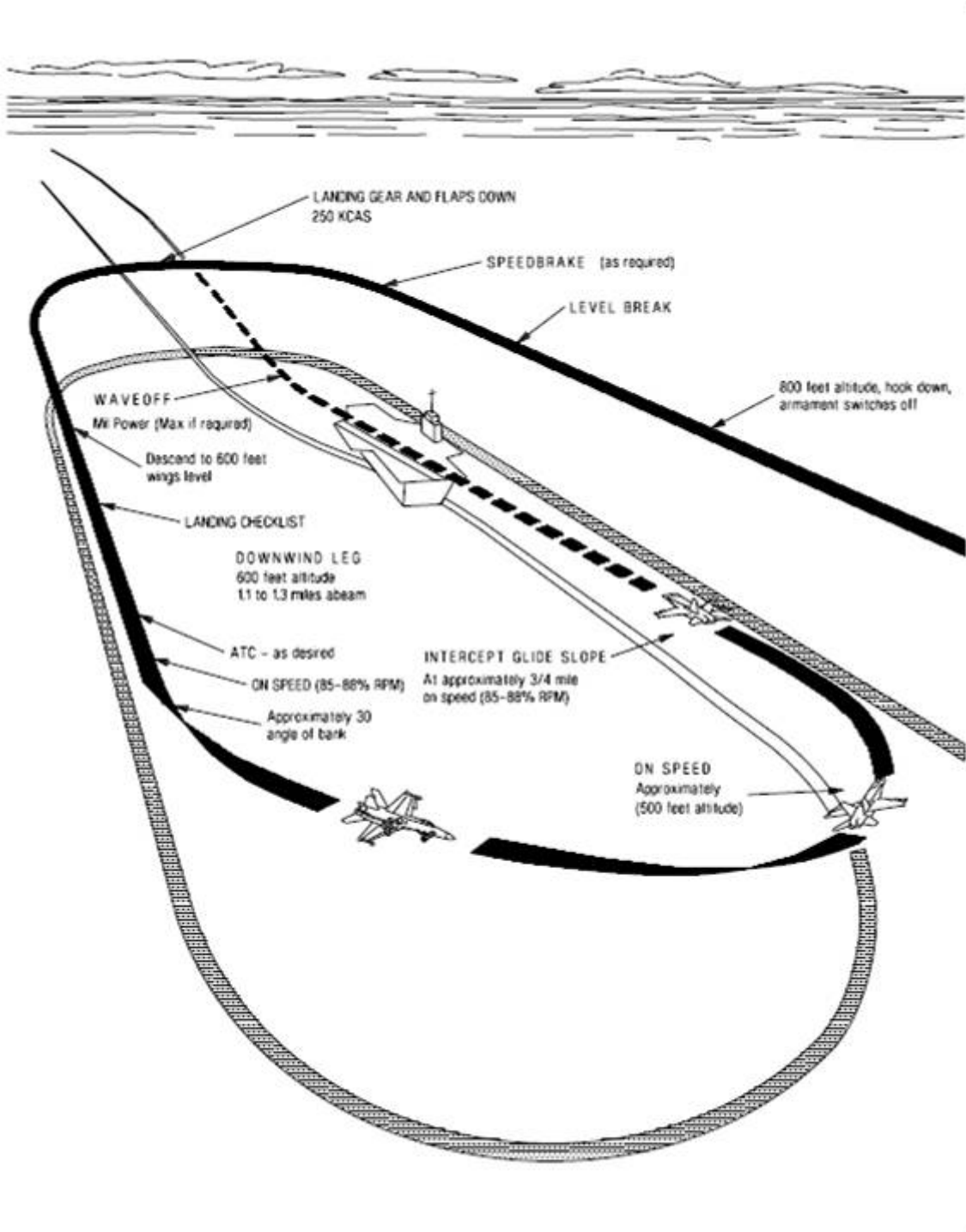
	0	1	2	3	4	5	6	7	8	9
A	NLPX	GCM	KOE	YB	VA	IRT	FJ	HS	QU	WD
B	JDOR	VPL	XSM	EI	NB	CGY	TU	QH	AF	WK
C	LNKT	UPY	BWR	ME	IO	HQA	FC	XV	DS	JG
D	SINV	UGR	DHJ	LK	AC	EPQ	FM	YT	BX	OW
E	HDLN	BAP	EYF	KG	XW	JUR	MT	IC	SO	VQ
F	CXRY	SHI	NEB	TK	VP	UFA	DL	MO	QJ	GW
G	KJYT	BMX	LAO	NC	RE	QIG	FS	UD	VW	PH
H	JNVP	LWA	EDM	UF	CX	OYB	KI	SG	TR	QH
I	YKRU	IFJ	GMT	BC	HD	ASN	XW	QL	OP	VE
J	ENIC	VHP	AUX	FQ	YD	GLT	SM	BJ	KO	WR
K	YECJ	QIK	HGV	RP	OB	FMS	NL	XD	UT	AW
L	JHTI	CNK	VYG	XW	FP	AES	UL	QM	DB	OR
M	OBDG	MIK	ENX	RW	AY	PVF	HQ	ST	LJ	CU
N	PBVC	YSI	AGE	WU	HQ	XTL	DO	JF	NM	RK
O	RNSC	AQX	KTF	GB	EI	PVL	DU	YM	HW	JO
P	EWDO	AMG	HPN	CL	UX	TKS	RQ	IF	YV	JB
Q	OFMJ	RAD	WQP	XN	IG	CSK	YE	BU	TL	VH
R	SYTU	KJH	VFB	LE	MO	CDR	QN	XP	AG	IW
S	GMLT	VAJ	HEY	BW	XQ	SNK	RO	CF	PU	DI
T	RBCN	FQS	LXJ	YP	GD	VIE	HU	TK	WM	OA
U	YJLC	MAB	OUK	DP	GE	RIV	TS	HQ	XF	WN
V	PJHL	ATF	YSW	DN	ER	KOQ	IU	XC	MV	BG
W	TJDO	ASF	QPY	CX	EW	IGR	VH	UM	LK	NB
X	JWSL	XRK	IEG	VQ	HT	YDF	NO	UP	CM	AB
Y	QOEL	JRG	PNS	AY	IB	KFX	UW	VH	TM	DC

NAVAIDS

Id	Name	Channel	Position	Elevation
DAN	Incirlik	21	N37 00.950 E035 26.883	243
AKR	Akrotiri	107	N34 34.765 E032 57.769	147
PHA	Paphos	79	N34 42.997 E032 28.963	35
RMD	Ramat David	84	N32 39.892 E035 11.265	136
OS66	Kuweires Military Aviation Institute	36	N36 11.362 E037 34.226	1200



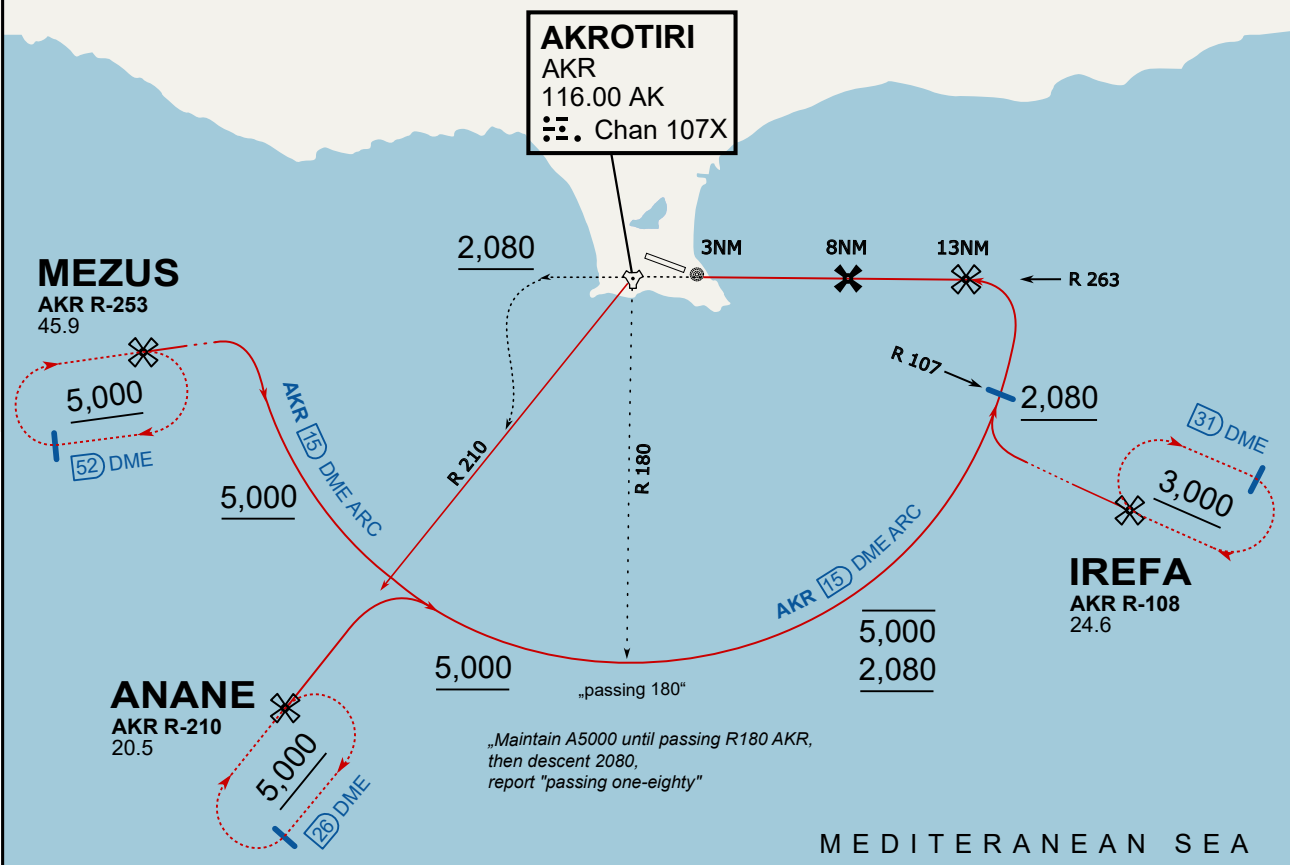




ATIS
 288.200
AKROTIRI GROUND
 122.100
AKROTIRI TOWER
 339.850
APP (OVERLORD)
 377.800

NOT FOR CIVIL USE

CAUTION: If unable to comply with restrictions advise ATC prior to departure.



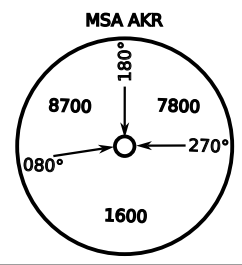
On Track 263° climb A 4.000'.
 passing 2.080' (2.000' AAL)
 turn left and intercept R-210 AKR
 to ANANE.
 Enter ANANE Holding.



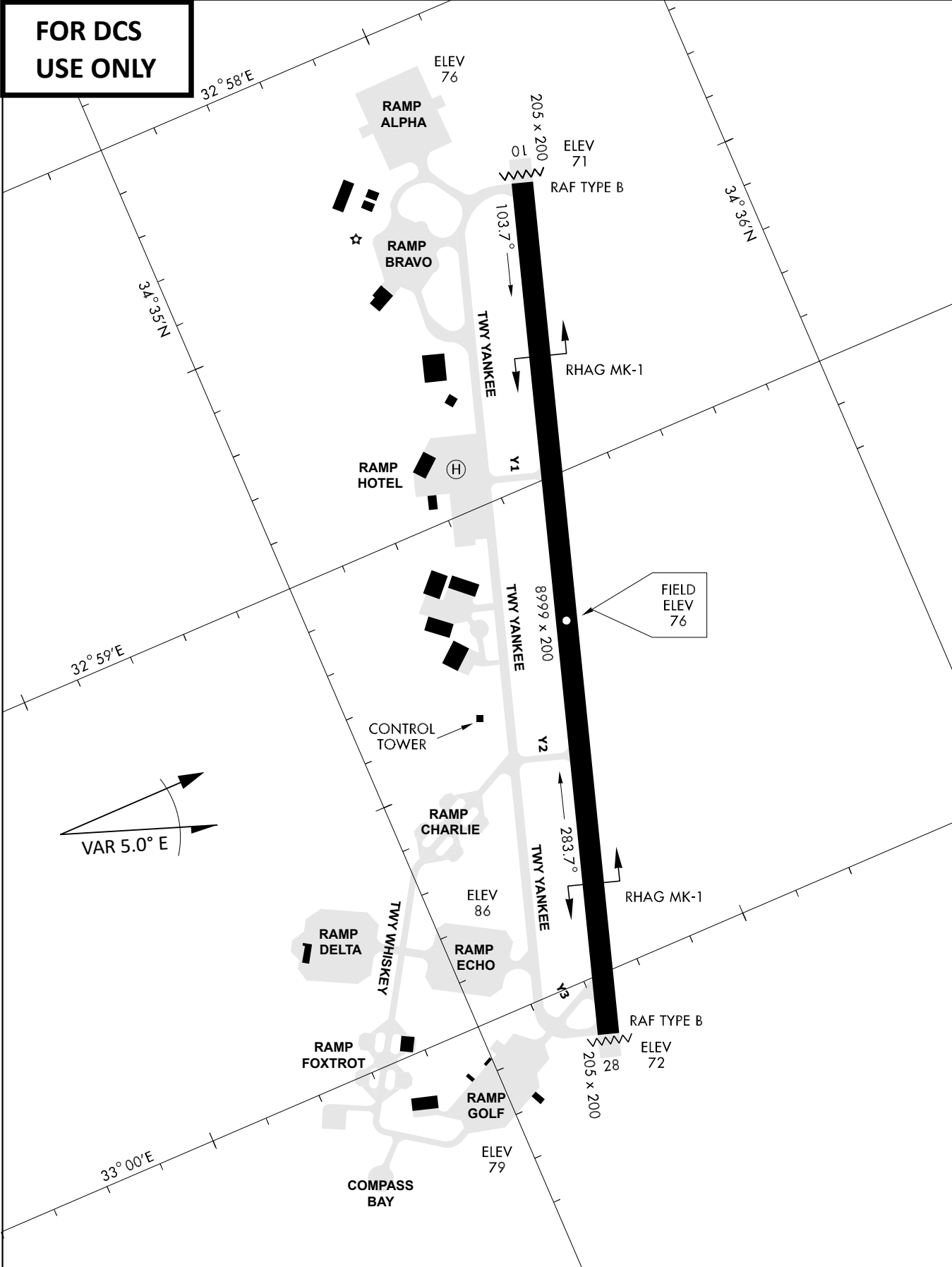
DME AKR	7	6	5	4
ALT	1780	1460	1140	820

THR Elev 74ft DME AKR

CAT	TAC	CIRCLE	GS (kts)	80	120	150	180	210
A	500(430)	680 (610) 2000m	FAF - MAPt (4.1NM)	3:06	2:03	1:38	1:22	1:10
B	1300m		RoD (fpm)	420	640	800	950	1110
C	780 (710)	780 (710) 3300m	- CIRCLING PROHIBITED N of Rwy - final track is offset 20° right of RCL and Intcp 1.1NM before THR - when established on final contact tower - Timing not Auth to define MAPt					
D	2600m	780 (710) 3600m						
E	1380 (1310) 5000m	1380 (1310) 5000m						



**FOR DCS
 USE ONLY**



ATIS	AKROTIRI GND	AKROTIRI TWR	OVERLORD CONTROL	TACAN	FIELD ELEVATION
288.20 MHz	240.10 122.10	339.85 130.075	377.8	AKR 107X	75 [ft] 23 [m]