

MISSION DATA CARD

OPORD		Callsign		Mission		Date/Time		
3367/2024		Raptor 1		Training		312000OCT24		
Task	Mav Training					Freq		
AO	Range 62					134.0		
Departure				Recovery				
FYTTR LOW				STRYK				
#	Callsign		Pilot		IFF	TCN	LSR	NET

LOADOUT

A/A	2xA120C, 2xA9X				GUN	100% HEI-T	
A/G	2xA65D, 2xA65H				CHF	120	
POD	HTS, A184, TGP				FLR	0	
TKS	2xFT300				FUEL	100%	

TOLD

	Takeoff	Target	Joker	Bingo	Land
FUEL	11169				

AIRBASES

	Name	TCN	ATIS	GND	TWR	RWY	Elev	ILS
Dep	Nellis AFB	12X	270.1	275.8	327.0	21L	1850	109.1
Arr	Nellis AFB	12X	270.1	275.8	327.0	21L	1850	109.1
Div	Creech AFB	87X	290.45	275.8	360.6			

FLIGHTPLAN

#	Name	Navaid/Coords/DME	ALT	TOT
1	DREAM	N37 10 20.400 W114 59 31.800	15000	
2	HOLD	N37 01 43.742 W115 12 26.203	12000	
3	IP	N36 53 03.716 W115 15 18.787	8000	
4	TRGT	N36 48 02.441 W115 26 40.858	0	
5	SARAH	N36 36 27 W115 18 01.800	15000	
6	GASS PEAK	N36 24 08.400 W115 10 39.600	9000	
7	SIMNS	N36 17 20.400 W115 10 45	5000	
8	CRAIG	N36 15 15 W115 08 16.200	5000	
9	Nellis AFB	N36 13 32 W115 02 37	1800	

RADIO CHANNELS

#	Freq	Name
1		Flight/Squadron specific
2	289.4	Nellis Clearance Delivery
3	275.8	Nellis Ground
4	327.0	Nellis Tower
5	385.4	Nellis Approach/Departure West
6	273.55	Nellis Approach/Departure East
7	317.525	Nellis Control -- Sally
8	254.4	Nellis Control-- Lee
9	305.6	SOF Bullseye
10	343.725	EMERGENCY SINGLE FRQ
11	270.1	Nellis ATIS
12	360.625	Creech AFB Tower
13	250.1	HAVE QUICK 13
14	251.1	HAVE QUICK 14
15	252.1	HAVE QUICK 15
16	377.8	Blackjack
17	265.0	KC-135 AR-641A
18	360.8	KC-135MPRS AR-635
19	319.8	KC-135MPRS AR-625
20	300.05	KC-135 AR-231V

RAMROD

0	1	2	3	4	5	6	7	8	9
M	I	C	R	O	W	A	V	E	D

KTC 1400 C

	0	1	2	3	4	5	6	7	8	9
A	BRWV	HSF	TOM	EY	UD	CIQ	LJ	XN	KG	PA
B	UFNM	YQP	RTB	HD	LK	CEO	VX	SW	JA	IG
C	SKAJ	ILT	OFW	GP	DE	VMU	XN	BR	YQ	CH
D	EALV	BJR	WQY	IH	DM	TGP	XO	FN	KS	UC
E	UJSE	WRD	KBG	AM	FY	NIO	QH	PT	XL	CV
F	RVXI	KWY	TNG	AS	BJ	DCQ	PF	UM	HL	OE
G	OVBX	IFC	WKN	LH	SM	RQU	DJ	YE	TP	AG
H	KYIN	QPH	DXE	UJ	FS	WAT	VC	GM	LO	RB
I	ENJO	PLS	TCU	XK	QG	YAM	FI	DV	HW	BR
J	PBGF	NQK	ISE	RH	VC	WMY	DJ	XU	OL	AT
K	KSHT	RJV	BIC	DQ	WM	OYN	AP	FG	UL	EX
L	GXSC	PQJ	YKI	MD	VR	BAH	FL	OT	NE	UW
M	SYGD	OUH	NME	LA	VT	KJI	QX	RB	FW	CP
N	YDFN	TSM	VWH	QC	ER	UGB	AX	LP	IK	OJ
O	UKYL	GPH	MVN	XW	SJ	BAR	FI	TQ	EC	DO
P	GPJA	MNB	FSK	RW	EO	DIV	XC	LT	QY	HU
Q	OMFC	KEX	IRJ	WH	NG	QTD	BU	VL	SY	PA
R	QNPE	GTR	BSW	DJ	KF	LXU	IM	HY	OA	VC
S	QRLW	PYH	NFV	DE	OU	TJM	AI	BC	XK	SG
T	WENK	QFH	BVM	GC	JX	ULS	AT	PD	RY	OI
U	OPWE	XMN	YQB	AS	DI	UFK	VL	RJ	TG	CH
V	MJIK	XYC	VEW	NA	QU	HGB	FD	LT	PO	RS
W	JXFO	RCB	SUW	TP	MA	GEL	DY	IQ	NV	HK
X	BXAI	LGR	FHD	YO	ET	WQV	PM	JC	UN	KS
Y	KYDP	QFA	BER	WV	XT	LHJ	NC	SO	MI	UG

NAVAIDS

Id	Name	Channel	Position	Elevation
BCE	Bryce Canyon	75	N3741.35 W11218.23	9040
BIH	Bishop	33	N3722.62 W11821.99	4114
BLD	Boulder	114	N3559.75 W11451.82	3650
BTY	Beatty	94	N3648.54 W11644.86	2925
CDC	Cedar City	120	N3747.24 W11304.90	5463
DAG	Daggett	79	N3457.75 W11634.69	1760
EED	Needles	99	N3445.96 W11428.43	650
GFS	Goffs	91	N3507.87 W11510.59	4019
GRL	Groom Lake	18	N3713.91 W11548.16	4475
HEC	Hector	74	N3447.83 W11627.78	1854
ILC	Wilson Creek	110	N3815.02 W11423.65	9318
INS	Creech AFB	87	N3635.20 W11540.12	3101
LAS	McCarran Intl	116	N3604.78 W11509.59	2142
LSV	Nellis	12	N3614.68 W11501.50	1864
MLF	Milford	58	N3821.62 W11300.79	4977
MMM	Mormon Mesa	90	N3646.16 W11416.65	2120
MVA	Mina	98	N3833.92 W11801.97	7860
OAL	Coale Dale	124	N3800.20 W11746.23	4800
PGS	Peach Springs	57	N3537.48 W11332.67	4754
TPH	Tonopah Muni	119	N3801.84 W11702.01	5330
TQQ	Silverbow	77	N3748.00 W11647.00	5500
UTI	St George	23	N3705.29 W11335.53	2871



RWY 3L-21R
 PCN 46 R/C/W/T
 RWY 3R-21L
 PCN 51 R/C/W/T
 2017

PAR	RWY	CAT	MINIMA		ARP	ELEV	Scale 1:35'500	
	21L	A B D E	2057 - 0.8 200 (200-0.8/1.6)	GS 3°	36° 14.060° N 115° 01.058° W	1857 [ft] 566 [m]	0	300
	3R	A B D E	2057 - 0.8 200 (200-0.8/1.6)	GS 3°			600	900
	21R	A C D E	2257 - 1.2 350 (350-1.2/1.6)				1200	1500 [m]
	3L	A C D E	2257 - 1.2 350 (350-1.2/1.6)				0	1000
							2000	3000
							4000	5000 [ft]

RWY	TORA	TODA	ASDA	LDA	PSN	THR	ALS
21L	10051 [ft] 3063 [m]	11051 [ft] 3368 [m]	11051 [ft] 3368 [m]	10051 [ft] 3063 [m]	36°14.043' N	115°01.018' W	⊕
3R	10120 [ft] 3084 [m]	11120 [ft] 3398 [m]	11120 [ft] 3398 [m]	10120 [ft] 3084 [m]	36°13.029' N	115°02.038' W	

ATIS	NELLIS GROUND	NELLIS TOWER	NELLIS CONTROL	TACAN	ILS RWY 21L	NELLIS EAST	NELLIS WEST
270.100 MHz	275.800 121.800	327.000 132.55	317.525	LSV 12X	109.10 Mhz	384.400	385.000

ATIS
270.100
NELLIS GROUND
275.800
NELLIS TOWER
327.000
NELLIS CONTROL
317.525
NELLIS DEP/APP EAST
384.400
BLACKJACK
377.800

CAUTION: If unable to comply
with restrictions advise ATC
prior to departure.



VMC ONLY

PILOT RESPONSIBLE FOR TERRAIN AVOIDANCE

① 4 NM from RWY 3L/R

BEATTY
Chan 94 BTY

RANGE 64/65
RANGE 63

TUCKY

R-2508

LSV R-269

FYTTR
N3621.44
W11541.47

BTY R-105

DME 15 ARC
5000

320°

270°

7233

FLEX
LSV 337/5

2086 M

①

3000

1859

NELLIS
Chan 12 LSV

R-255

6000

5000

300°

R-269

4131

DEPARTURE ROUTE DESCRIPTION

TAKEOFF RWY 3L/R:

- Remain below 3,000' MSL until north of Race Track and turned westbound.
- Turn left within 4NM of Nellis direct FLEX. Fly north of FLEX and turn left heading 270°.
- Intercept LSV R-255 DME ARC at or below 5,000' MSL.
- ARC south, intercept LSV R-269 outbound. Maintain VFR.

TAKEOFF RWY 21L/21R:

- Follow Noise Abatement Procedures.
- Fly runway heading until past Golf Course, turn right heading 300°.
- Cross LSV R-255 between 5,000' and 6,000' , intercept and proceed outbound on the LSV R-269. Recommend climb to 8,500' MSL or appropriate VFR altitude for overflight of North Las Vegas Training Area. Fly routing for appr. mission/transition.

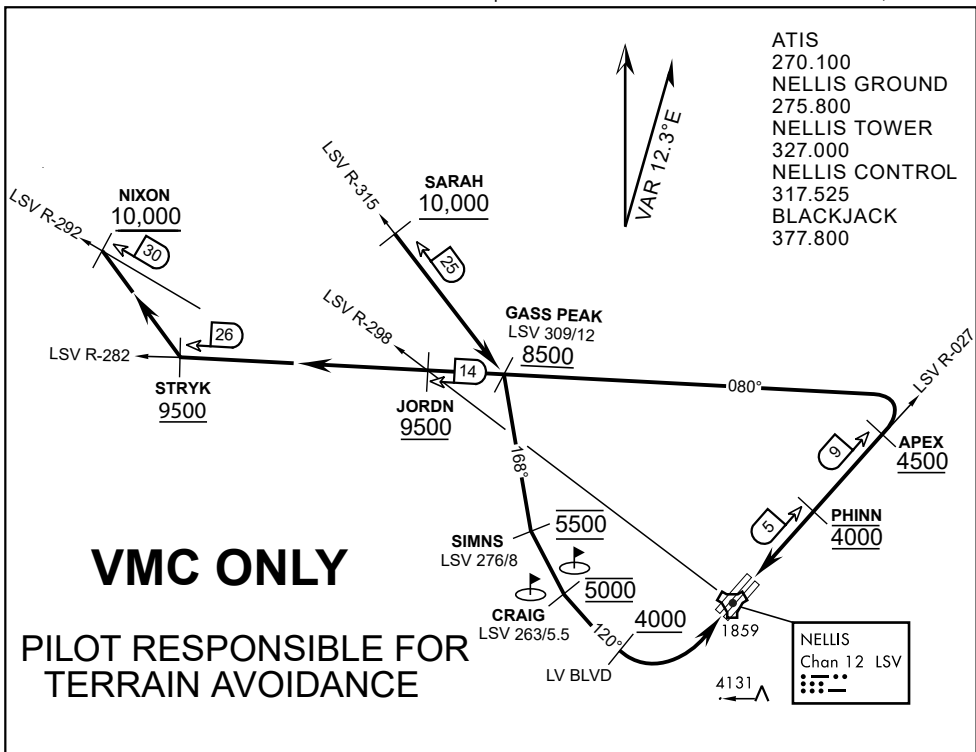
TRANSITIONS:

R-4806: Turn right at the LSV 269/20 direct to assigned ranges.

BEATTY: Turn right at FYTTR direct BTY via the BTY R-105

R-2508: Turn right at the FYTTR, intercept the BTY 105/30, direct TUCKY, then direct R-2508

FYTTR DEPARTURE AND TRANSITIONS (FYTTR LOW)



APPROACH ROUTE DESCRIPTION

APPROACH RWY 3L/R

Cross STRYK at or above 9,500' MSL, proceed direct GASS PEAK. Cross JORDN at or above 9,500' MSL, cross GASS PEAK at or above 8,500' MSL. Proceed direct SIMNS and cross at 5,500' MSL. Cross Las Vegas Blvd at or above 4,000' MSL then to 3,500' MSL for Initial. Remain within 4 DME if LSV on turn to final.

VFR STRAIGHT-IN RWY 3L/R

Depart CRAIG & descend to be at 3,000' MSL by Las Vegas Blvd. Do not descend below 3,000' MSL until within 5 DME of LSV or 4 NM of the runway on turn to final.

APPROACH RWY 21L/R

Cross STRYK at or above 9,500' MSL, proceed direct GASS PEAK. Cross JORDN at or above 9,500' MSL, cross GASS PEAK at or above 8,500' MSL. Cross APEX at or above 4,500' MSL then direct 5NM initial. Descend to cross PHINN at 4,000' MSL, Inside 5 NM descend to 3,500' MSL.

VFR STRAIGHT-IN RWY 21L/R

Cross APEX at 4,000' MSL. Descend to be at 3,000' MSL at PHINN. Descend to 3,000' MSL at LSV 027/5.

RANGE 63B EXIT

SOUTH: Via NIXON at or above 10,000' MSL, then direct STRYK.
EAST: Via SARAH at or above 10,000' MSL, then direct GASS PEAK.



INDIAN SPRINGS, NEVADA

TACAN INS Chan 87	APCH CRS 065°	Rwy ldg TDZE 3133	9002 3113
		Arpt Elev 3113	

INDIAN SPRINGS AF AUX (KINS)

▼ * MISSED APPROACH: Straight ahead to INS TACAN, intercept INS R-outbound, cross 17 DME at or above 9500, then direkt KSV TACAN 114

NELLIS CON

CREECH AFB TOWER
118.30 60.60

GND CON

NOT FOR CIVIL USE

FOR USE UNDER BASIC VFR
WEATHER MINIMUMS ONLY

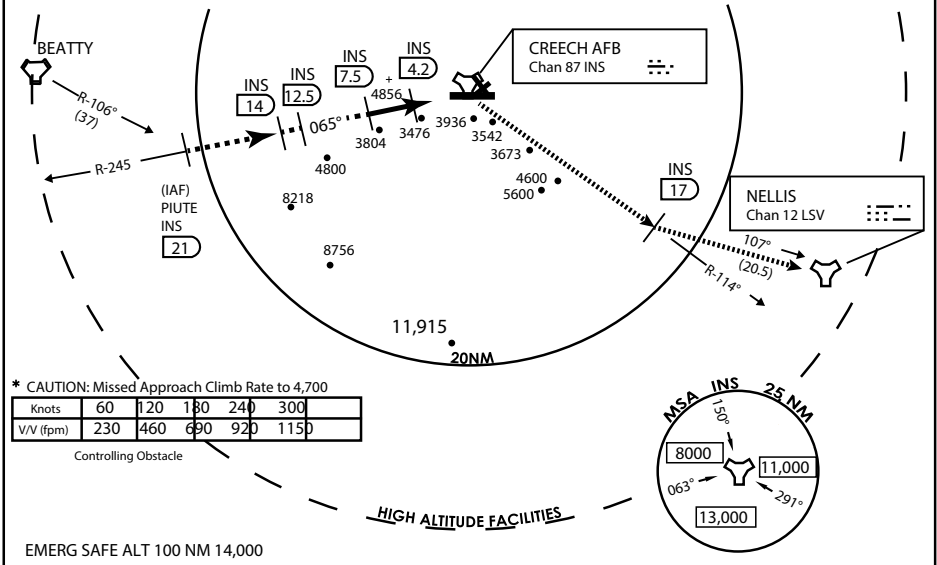
PILOT IS RESPONSIBLE FOR TERRAIN/OBSTACLE AVOIDANCE AND APPROPRIATE VFR CLOUD CLEARANCE FOR ALL

CAUTION: Descent gradients are greater than allowed under standard TERPS criteria and inbound course does not meet straight-in criteria

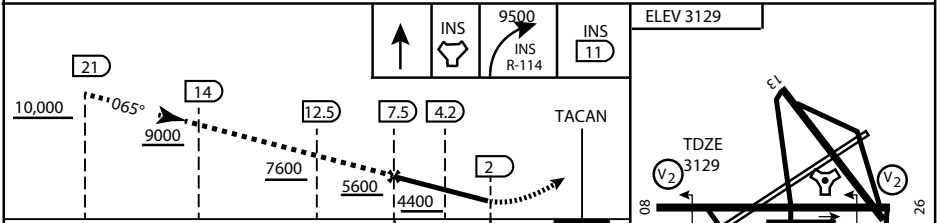
CAUTION: Final approach course crosses Runway centerline at MIDFIELD. Maneuvering left of course required prior to landing. Do not Maneuver farther north than the INS R- 258

Modified by viaBog 66 for use with DCS
NOT FOR REAL LIFE NAVIGATION

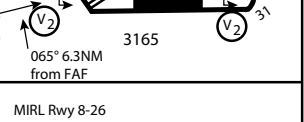
Modified by viaBog 66 for use with DCS
NOT FOR REAL LIFE NAVIGATION



EMERG SAFE ALT 100 NM 14,000



CATEGORY	A	B	C	D	E
S-8	3760-1 ½	627 (700-1 ½)	3760-1¾ 627 (700-1¾)	3760-2 627 (700-2)	3760-2¼ 627 (700-2¼)
CIRCLING	NOT AUTHORIZED				



CITY OF INDIAN, NEVADA

INDIAN SPRINGS AF AUX (KINS)

(FOR DAY VFR USE ONLY)



