

**MISSION DATA CARD**

OPORD		Callsign	Mission	Date/Time		
3366/2024		Edelweiss 1	Training	011800NOV24		
Task	IFR Training				Freq	
AO					135.0	
Departure			Recovery			
MORMON MESA FOUR			ILS or LOC/DME X RWY 21L			
#	Callsign	Pilot	IFF	TCN	LSR	NET
-1	Edelweiss 1-1	Beethovenz	1711	1Y	1711	

**LOADOUT**

A/A		GUN	100% HEI-T
A/G		CHF	120
POD		FLR	0
TKS	FT300	FUEL	100%

**TOLD**

	Takeoff	Target	Joker	Bingo	Land
FUEL	9166			2500	

**AIRBASES**

	Name	TCN	ATIS	GND	TWR	RWY	Elev	ILS
Dep	Nellis AFB	12X	270.1	275.8	327.0	21L	1850	109.1
Arr	Nellis AFB	12X	270.1	275.8	327.0	21L	1850	109.1
Div	Creech AFB	87X	290.45	275.8	360.6			

**FLIGHTPLAN**

#	Name	Navaid/Coords/DME	ALT	TOT
1	Mormon Mesa	217 (N36 46.160 W114 16.650)	20000	
2	Boulder City	016 (N35 59.750 W114 51.820)	20000	
3	Creso	213 (N35 46.320 W115 09.660)	20000	
4	Boach	213 (N35 40.680 W115 17.520)	20000	
5	Wopma	213 (N35 32.820 W115 28.080)	20000	
6	Whiggs	213 (N35 30.420 W115 31.260)	20000	
7	GOFFS	308 (N35 07.870 W115 10.590)	20000	
8	Needles	287 (N34 45.960 W114 28.430)	20000	
9	Unpas	331 (N35 17.700 W114 38.400)	20000	
10	Lynsy	331 (N35 39.540 W114 45.180)	20000	
11	Boulder City	150 (N35 59.750 W114 51.820)	20000	
12	McCarran Intl	N36 04.780 W115 09.590	2069	
13	Whigg	N35 30.420 W115 31.260	7000	
14	Boach	213 (N35 40.680 W115 17.520)	8300	
15	Boulder City	213 (N35 59.750 W114 51.820)	10000	
16	KRYSS	210 (N36 30.369 W114 44.190)	9000	
17	Nellis	N36 14.680 W115 01.500	1865	

## NOTES

Departure via MORMON MESA (90 X)  
Enroute BOULDER CITY (114 X)  
Enroute CRESO, BOACH, WOPMA, WHIGG, GOFFS (91 X)  
Enroute NEEDLES (99 X)  
Enroute UNPAS, LYNSY, BOULDER CITY (114 X)  
ILS LOW APP MCCARRAN RWY 26R (116 X)  
MCCARRAN FIVE DEPARTURE o/b HECTOR (74 X)  
Intercept HECTOR o/b R032 on DME63 (WHIGG)  
Transit to FL70  
Enroute BOACH, BOULDER CITY (114 X)  
ILS Recovery NELLIS RWY21L via KRYSS

**RADIO CHANNELS**

#	Freq	Name
1		Flight/Squadron specific
2	289.4	Nellis Clearance Delivery
3	275.8	Nellis Ground
4	327.0	Nellis Tower
5	385.4	Nellis Approach/Departure West
6	273.55	Nellis Approach/Departure East
7	317.525	Nellis Control -- Sally
8	254.4	Nellis Control-- Lee
9	305.6	SOF Bullseye
10	343.725	EMERGENCY SINGLE FRQ
11	270.1	Nellis ATIS
12	360.625	Creech AFB Tower
13	250.1	HAVE QUICK 13
14	251.1	HAVE QUICK 14
15	252.1	HAVE QUICK 15
16	377.8	Blackjack
17	265.0	KC-135 AR-641A
18	360.8	KC-135MPRS AR-635
19	319.8	KC-135MPRS AR-625
20	300.05	KC-135 AR-231V

**RAMROD**

0	1	2	3	4	5	6	7	8	9
P	R	O	C	L	A	I	M	E	D

**KTC 1400 C**

	0	1	2	3	4	5	6	7	8	9
A	NLPX	GCM	KOE	YB	VA	IRT	FJ	HS	QU	WD
B	JDOR	VPL	XSM	EI	NB	CGY	TU	QH	AF	WK
C	LNKT	UPY	BWR	ME	IO	HQA	FC	XV	DS	JG
D	SINV	UGR	DHJ	LK	AC	EPQ	FM	YT	BX	OW
E	HDLN	BAP	EYF	KG	XW	JUR	MT	IC	SO	VQ
F	CXRY	SHI	NEB	TK	VP	UFA	DL	MO	QJ	GW
G	KJYT	BMX	LAO	NC	RE	QIG	FS	UD	VW	PH
H	JNVP	LWA	EDM	UF	CX	OYB	KI	SG	TR	QH
I	YKRU	IFJ	GMT	BC	HD	ASN	XW	QL	OP	VE
J	ENIC	VHP	AUX	FQ	YD	GLT	SM	BJ	KO	WR
K	YECJ	QIK	HGV	RP	OB	FMS	NL	XD	UT	AW
L	JHTI	CNK	VYG	XW	FP	AES	UL	QM	DB	OR
M	OBDG	MIK	ENX	RW	AY	PVF	HQ	ST	LJ	CU
N	PBVC	YSI	AGE	WU	HQ	XTL	DO	JF	NM	RK
O	RNSC	AQX	KTF	GB	EI	PVL	DU	YM	HW	JO
P	EWDO	AMG	HPN	CL	UX	TKS	RQ	IF	YV	JB
Q	OFMJ	RAD	WQP	XN	IG	CSK	YE	BU	TL	VH
R	SYTU	KJH	VFB	LE	MO	CDR	QN	XP	AG	IW
S	GMLT	VAJ	HEY	BW	XQ	SNK	RO	CF	PU	DI
T	RBCN	FQS	LXJ	YP	GD	VIE	HU	TK	WM	OA
U	YJLC	MAB	OUK	DP	GE	RIV	TS	HQ	XF	WN
V	PJHL	ATF	YSW	DN	ER	KOQ	IU	XC	MV	BG
W	TJDO	ASF	QPY	CX	EW	IGR	VH	UM	LK	NB
X	JWSL	XRK	IEG	VQ	HT	YDF	NO	UP	CM	AB
Y	QOEL	JRG	PNS	AY	IB	KFX	UW	VH	TM	DC

**NAVAIDS**

<b>Id</b>	<b>Name</b>	<b>Channel</b>	<b>Position</b>	<b>Elevation</b>
BCE	Bryce Canyon	75	N3741.35 W11218.23	9040
BIH	Bishop	33	N3722.62 W11821.99	4114
BLD	Boulder	114	N3559.75 W11451.82	3650
BTY	Beatty	94	N3648.54 W11644.86	2925
CDC	Cedar City	120	N3747.24 W11304.90	5463
DAG	Daggett	79	N3457.75 W11634.69	1760
EED	Needles	99	N3445.96 W11428.43	650
GFS	Goffs	91	N3507.87 W11510.59	4019
GRL	Groom Lake	18	N3713.91 W11548.16	4475
HEC	Hector	74	N3447.83 W11627.78	1854
ILC	Wilson Creek	110	N3815.02 W11423.65	9318
INS	Creech AFB	87	N3635.20 W11540.12	3101
LAS	McCarran Intl	116	N3604.78 W11509.59	2142
LSV	Nellis	12	N3614.68 W11501.50	1864
MLF	Milford	58	N3821.62 W11300.79	4977
MMM	Mormon Mesa	90	N3646.16 W11416.65	2120
MVA	Mina	98	N3833.92 W11801.97	7860
OAL	Coale Dale	124	N3800.20 W11746.23	4800
PGS	Peach Springs	57	N3537.48 W11332.67	4754
TPH	Tonopah Muni	119	N3801.84 W11702.01	5330
TQQ	Silverbow	77	N3748.00 W11647.00	5500
UTI	St George	23	N3705.29 W11335.53	2871



RWY 3L-21R  
 PCN 46 R/C/W/T  
 RWY 3R-21L  
 PCN 51 R/C/W/T  
 2017

PAR	RWY	CAT	MINIMA		ARP	ELEV	Scale 1:35'500	
	21L	A B D E	2057 - 0.8 200	(200-0.8/1.6) GS 3°	36° 14.060° N 115° 01.058° W	1857 [ft] 566 [m]	0 300 600 900 1200 1500 [m]	
	3R	A B D E	2057 - 0.8 200	(200-0.8/1.6) GS 3°			0 1000 2000 3000 4000 5000 [ft]	
SRA	21R	A C D E	2257 - 1.2 350	(350-1.2/1.6)				
	3L	A C D E	2257 - 1.2 350	(350-1.2/1.6)				

RWY	TORA	TODA	ASDA	LDA	PSN	THR	ALS
21L	10051 [ft] 3063 [m]	11051 [ft] 3368 [m]	11051 [ft] 3368 [m]	10051 [ft] 3063 [m]	36°14.043' N	115°01.018' W	⊕
3R	10120 [ft] 3084 [m]	11120 [ft] 3398 [m]	11120 [ft] 3398 [m]	10120 [ft] 3084 [m]	36°13.029' N	115°02.038' W	

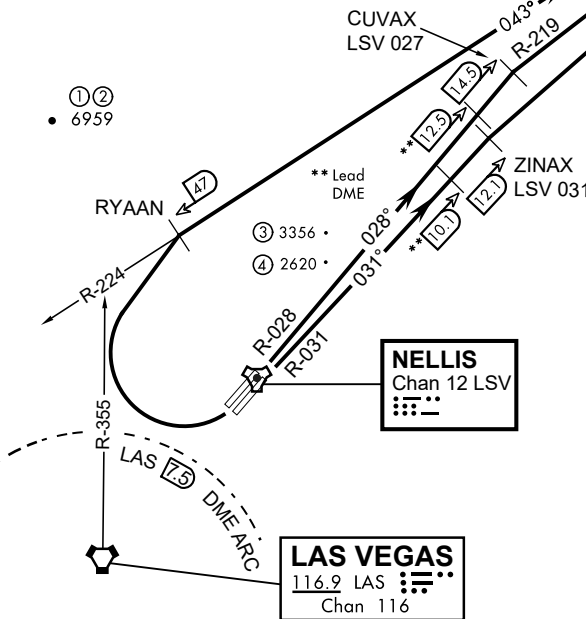
ATIS	NELLIS GROUND	NELLIS TOWER	NELLIS CONTROL	TACAN	ILS RWY 21L	NELLIS EAST	NELLIS WEST
270.100 MHz	275.800   121.800	327.000   132.55	317.525	LSV 12X	109.10 Mhz	384.400	385.000

ATIS  
270.100  
NELLIS GROUND  
275.800  
NELLIS TOWER  
327.000  
NELLIS CONTROL  
317.525  
NELLIS DEP/APP EAST  
384.400  
BLACKJACK  
377.800



**MORMON MESA**  
114.3 MMM  
Chan 90  
L-9 H-3

19,000



CAUTION: If unable to comply with restrictions advise ATC prior to departure.

- ① 12.24 NM from Rwy 21R
- ② 12.40 NM from Rwy 21L
- ③ 5.67 NM from Rwy 3L
- ④ 5.85 NM from Rwy 3R

Rwy	Knots	60	120	180	240	300	360
* 3L	V/V(fpm)	291	582	873	1164	1455	1746
* 3R	V/V(fpm)	258	516	774	1032	1290	1548
* 21L	V/V(fpm)	529	1058	1587	2116	2645	3174
* 21R	V/V(fpm)	536	1072	1680	2144	2680	3216
† 3L/R	V/V(fpm)	359	718	1077	1436	1795	2154

\* Minimum † ATC Climb Rate  
 ① To 3600  
 ② To 3200  
 ③ To 17,000  
 ④ To 13,500  
 ⑤ To 19,000

**DEPARTURE ROUTE DESCRIPTION**

**TAKE-OFF RWY 3L**

• Fly runway heading to intercept the LSV TACAN R-027 then direct CUVAX, intercept the MMM VORTAC R-219 then direct MMM climbing to FL190 or as assigned, then via assigned route.

**TAKE-OFF RWY 3R**

• Fly runway heading to intercept the LSV TACAN R-031 then direct ZINAX, intercept the MMM VORTAC R-217 then direct MMM, climbing to FL190 or as assigned, then via assigned route.

**TAKE-OFF RWY 21L/R**

• Turn right to intercept MMM VORTAC R-224 prior to MMM 47 DME, remain North of the LAS VORTAC 7.5 DME, remain East of LAS R-355, intercept MMM R-224 then direct MMM cross MMM at or above FL190, then via assigned route.

NOISE ABATMENT PROCEDURES: Fly acc. Nellis Noise Abatement instructions

v.01032 NTR NAV CHART



LAS VEGAS, NEVADA

# ILS or LOC X RWY 21L

LOC I-DIQ <b>109.1</b>	APCH CRS <b>209°</b>	Rwy ldg 21L <b>10,051</b>	21R <b>10,120</b>
		TDZE <b>1865</b>	<b>1869</b>
		Arprt Elev <b>1869</b>	

AL-227 (USAF)

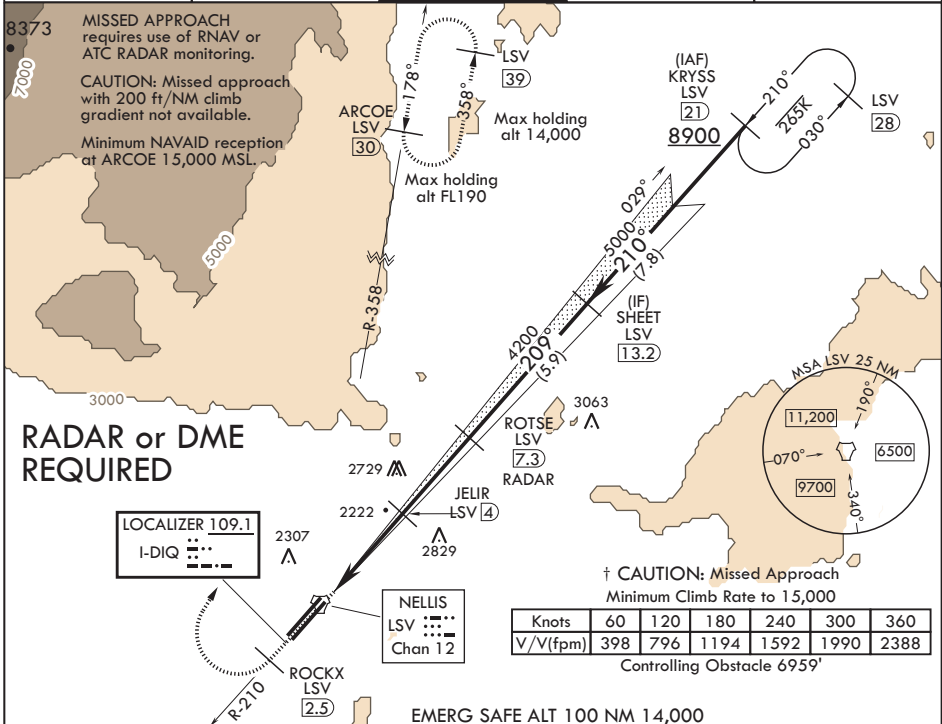
NELLIS AFB (KLSV)

⚠ \* When ALS inop, increase all CAT RVR to 40, vis to 3/4 mile.  
 \*\* When ALS inop, increase CAT AB RVR to 55, vis to 1 mile, CAT CDE vis to 1 3/4 miles.  
 \*\*\* Circling not authorized E of Rwy 3R-21L.



† MISSED APPROACH: Climb to 15,000, intercept LSV TACAN R-210 to 2.5 DME (ROCKX), then climbing right turn heading 020° to join LSV TACAN R-358 to ARCOE and hold, continue climb in hold to 15,000. Missed approach not for civil use.

ATIS <b>270.1</b>	APP CON <b>124.95 273.55</b>	TOWER <b>132.55 327.0</b>	GND CON <b>121.8 275.8</b>	CLNC DEL <b>120.9 289.4</b>
----------------------	---------------------------------	------------------------------	-------------------------------	--------------------------------

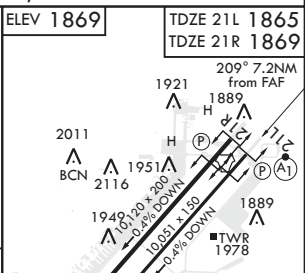
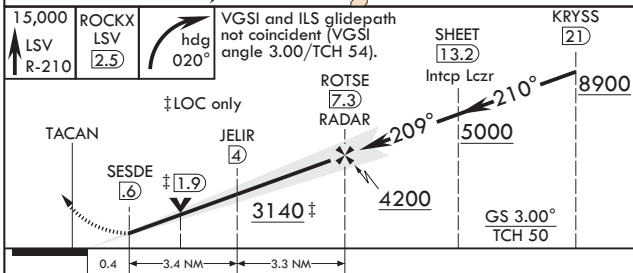


**RADAR or DME REQUIRED**

† CAUTION: Missed Approach  
Minimum Climb Rate to 15,000

Knots	60	120	180	240	300	360
V/V(ftpm)	398	796	1194	1592	1990	2388

Controlling Obstacle 6959'



15,000 LSV R-210	ROCKX LSV 2.5	VGSI and ILS glidepath not coincident (VGSI angle 3.00/TCH 54).	SHEET 13.2	KRYSS 21	ELEV 1869	TDZE 21L 1865 TDZE 21R 1869
TACAN	SESDE 1.9	‡ LOC only	Intcp Lc2r	210°	8900	209° 7.2NM from FAF
	JELIR 4		ROTSE 7.3 RADAR	209°	5000	1921 209° 1.5NM
					4200	1951 209° 1.0NM
					3140 ‡	1889 209° 0.5NM
						1948 209° 0.2NM
						1978 209° 0.1NM
						TWR 1978
						2011 BCN 2116
						101, 120 x 200
						0.2% DOWN
						1005 x 150
						0.4% DOWN

CATEGORY	A	B	C	D	E
S-ILS 21L*	2065/24		200	(200-1/2)	
S-LOC 21L**	2480/24	615 (700-1/2)	2480-1 3/4	615	(700-1 3/4)
SIDESTEP 21R	2500-1	631 (700-1)	2500-1 3/4	631	(700-1 3/4)
CIRCLING***	2480-1 611 (700-1)	2620-1 751 (800-1)	2620-2 1/4 751 (800-2 1/4)	2840-3 971 (1000-3)	3040-3 1171 (1200-3)

LAS VEGAS, NEVADA 36°14'N - 115°02'W NELLIS AFB (KLSV)

Amdt 9 03JAN19

# ILS or LOC X RWY 21L

SW-4, 05 DEC 2019 to 02 JAN 2020

SW-4, 05 DEC 2019 to 02 JAN 2020



INDIAN SPRINGS, NEVADA

TACAN INS Chan 87	APCH CRS 065°	Rwy ldg TDZE 3133	9002 3133
		Arpt Elev 3113	

INDIAN SPRINGS AF AUX (KINS)

**▼** \* MISSED APPROACH: Straight ahead to INS TACAN, intercept INS R-outbound, cross 17 DME at or above 9500, then direkt KSV TACAN 114

NELLIS CON

CREECH AFB TOWER  
118.30 60.60

GND CON

**NOT FOR CIVIL USE**

FOR USE UNDER BASIC VFR  
WEATHER MINIMUMS ONLY

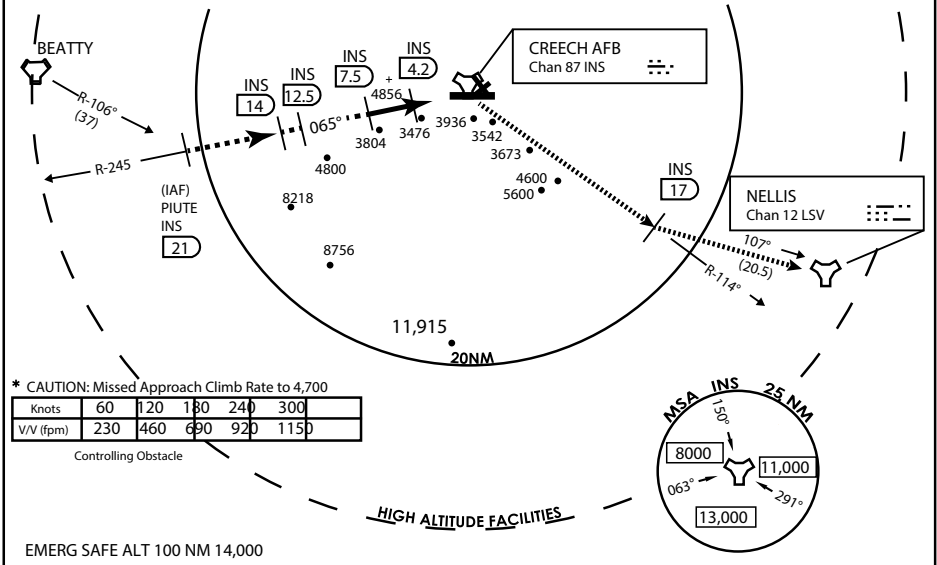
PILOT IS RESPONSIBLE FOR TERRAIN/OBSTACLE AVOIDANCE AND APPROPRIATE VFR CLOUD CLEARANCE FOR ALL

CAUTION: Descent gradients are greater than allowed under standard TERPS criteria and inbound course does not meet straight-in criteria

CAUTION: Final approach course crosses Runway centerline at MIDFIELD. Maneuvering left of course required prior to landing. Do not Maneuver farther north than the INS R- 258

Modified by vJaBoG 66 for use with DCS  
NOT FOR REAL LIFE NAVIGATION

Modified by vJaBoG 66 for use with DCS  
NOT FOR REAL LIFE NAVIGATION



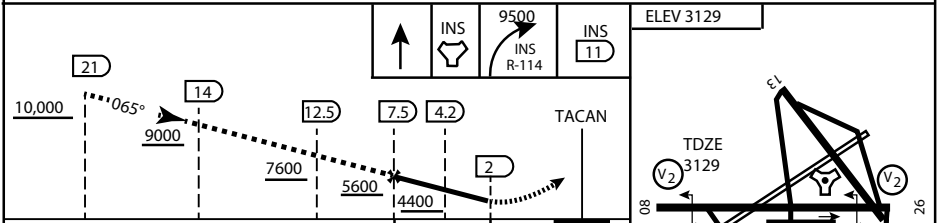
\* CAUTION: Missed Approach Climb Rate to 4,700

Knots	60	120	180	240	300
V/V (fpm)	230	460	690	920	1150

Controlling Obstacle

HIGH ALTITUDE FACILITIES

EMERG SAFE ALT 100 NM 14,000



CATEGORY	A	B	C	D	E
S-8	3760-1 1/2	627 (700-1 1/2)	3760-1 3/4 627 (700-1 3/4)	3760-2 627 (700-2)	3760-2 1/4 627 (700-2 1/4)
CIRCLING	NOT AUTHORIZED				

MIRL Rwy 8-26

CITY OF INDIAN, NEVADA

INDIAN SPRINGS AF AUX (KINS)

(FOR DAY VFR USE ONLY)



# AIRPORT DIAGRAM

476 VFG

CREECH AFB (KINS)  
INDIAN SPRINGS, NEVADA

ATIS  
 122.5  
 CREECH TOWER  
 118.4 360.7 38.65  
 GND CON  
 118.3 275.8  
 CLNC DEL

115°42'W

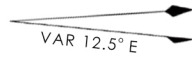
FIELD  
 ELEV  
 3127

80

972 X 150

HOT CARGO PAD

BAK-12

  
 VAR 12.5° E

WEST EOR

115°41'W

476 VFG JAN 2019

476 VFG JAN 2019

CONTROL TOWER  
 BASE OPS

RPA LOLA WEST

RPA LOLA EAST

LOLA / HUNG ORDNANCE

199 X 100  
 ELEV 3127  
 RUNWAY 31/13  
 MQ/RQ-1 ONLY

9002 X 150

258.5°

860 X 100

313.8°

4064 X 100

115°40'W

BAK-12

ELEV 3127

EAST EOR

1030 X 150

26

# AIRPORT DIAGRAM

INDIAN SPRINGS, NEVADA  
CREECH AFB (KINS)