

**MISSION DATA CARD**

OPORD		Callsign		Mission		Date/Time		
3363/2024		T-Rex 2		Training		282000OCT24		
Task						Freq		
AO						132.25		
Departure				Recovery				
DREAM FOUR				ARCOE				
#	Callsign		Pilot		IFF	TCN	LSR	NET
-1	T-Rex 2-1		addiks		1521	1Y	1651	25/01
-2	T-Rex 2-2		Crusader		1522	64Y	1652	25/02

**LOADOUT**

A/A	A9M				GUN	100% CM	
A/G	2xM82, 7M151L				CHF	240	
POD	TGP, A184L				FLR	240	
TKS					FUEL	50%	

**TOLD**

	Takeoff	Target	Joker	Bingo	Land
FUEL	5543				

**AIRBASES**

	Name	TCN	ATIS	GND	TWR	RWY	Elev	ILS
Dep	Nellis AFB	12X	270.1	275.8	327.0	21L	1850	109.1
Arr	Nellis AFB	12X	270.1	275.8	327.0	21L	1850	109.1

**FLIGHTPLAN**

#	Name	Navaid/Coords/DME	ALT	TOT
1	MINTT	LSV 339/28 LAS 351/38 (N36 42.740 W115 06.290)		
2	DREAM	LAS 354/66 BLD 342/71 (N37 10.340 W114 59.530)		
3	AR641A.1	N37 28 W114 39		
4	T61.01	N37 09.575 W115 25.575		
5	T61.03	N37 09.087 W115 23.513		
6	ARCOE	LSV 357/30 (N36 44.260 W114 55.020)		
7	APEX2	LSV 027/09 (N36 21.580 W114 54.340)		
8	PHINN	N36 18.427 W114 57.408		

**COMMS**

Radio	Usage
1	132.25
2	11-3-4-16-11-4-3
3	32.00

## OTHER FLIGHTS

Callsign	Mission	Airframe	Freq	TCN	Grpld	Laser
Edelweiss 5	Training	4x F/A-18C	264.55	12/75	1	175X
AO	FYTTR LOW Departure + STRYK Recovery + BJT Maneuvers		Task	Basic Jet Training		
Edelweiss 1	Training	4x F/A-18C	264.15	12/75	1	175X
AO	FYTTR LOW Departure + STRYK Recovery + BJT Maneuvers		Task	Tactical Formations		
Rattler 1	Training	4x AH-64D	133.5	1/64		170X
AO	LATNG		Task	BFT		
Edelweiss 6	Training	2x A-10C	134.65	1/64	40	166X
AO			Task			

**RADIO CHANNELS**

#	Freq	Name
1		Flight/Squadron specific
2	289.4	Nellis Clearance Delivery
3	275.8	Nellis Ground
4	327.0	Nellis Tower
5	385.4	Nellis Approach/Departure West
6	273.55	Nellis Approach/Departure East
7	317.525	Nellis Control -- Sally
8	254.4	Nellis Control-- Lee
9	305.6	SOF Bullseye
10	343.725	EMERGENCY SINGLE FRQ
11	270.1	Nellis ATIS
12	360.625	Creech AFB Tower
13	250.1	HAVE QUICK 13
14	251.1	HAVE QUICK 14
15	252.1	HAVE QUICK 15
16	377.8	Blackjack
17	265.0	KC-135 AR-641A
18	360.8	KC-135MPRS AR-635
19	319.8	KC-135MPRS AR-625
20	300.05	KC-135 AR-231V

**RAMROD**

0	1	2	3	4	5	6	7	8	9
C	O	N	F	U	S	E	D	L	Y

**KTC 1400 C**

	0	1	2	3	4	5	6	7	8	9
A	QTDS	VJA	UKW	YC	FG	NOM	HR	IP	LX	BE
B	YMGF	XLC	VDO	PJ	WT	BQR	EA	HI	KN	US
C	PHQG	MJY	LSO	FK	TW	VIN	BX	AD	UR	EC
D	VDJU	YTE	GKW	RF	NO	MSA	HX	BC	LQ	IP
E	JBCT	GIW	SKE	AL	HN	DPX	YO	MQ	RV	FU
F	LQKT	VSW	UGI	YR	CN	EXF	OJ	PD	MH	BA
G	VOTU	JKG	YWR	MQ	HD	FEC	BX	LS	PI	AN
H	LTIH	EWX	RJO	MD	VQ	PUY	AF	GN	SB	CK
I	EQOD	SUK	CMB	JY	PT	RNA	HV	LI	WG	FX
J	HSTA	RJN	YLO	QV	EF	KCG	UI	BD	XP	MW
K	NTFE	YQS	KBV	JH	PD	MIW	OA	LR	GX	CU
L	STQR	GCV	YFE	KO	HM	WNX	PA	UI	LJ	DB
M	PXVG	QAB	UDM	JE	KR	FLI	SW	OC	YT	NH
N	OMPL	IKX	QAF	BJ	RG	TCV	WU	YD	NS	EH
O	OTHF	NIS	VXU	MA	RE	YKL	GB	PQ	DC	JW
P	YXJN	HCU	IPW	DE	GS	OLV	RB	AT	MQ	FK
Q	OCPX	EYD	AMW	JF	BU	STQ	HG	RN	LK	VI
R	OIRJ	WSG	UEL	BP	XT	NQF	AC	DY	VH	MK
S	WXNG	BKV	DMT	YQ	EC	RJI	AU	OF	LH	PS
T	RGOQ	PUI	XVN	AB	LD	TFC	JE	KS	MY	WH
U	XGMC	DBP	AIF	HQ	EY	LVN	RU	JS	OW	TK
V	QBIX	OYK	WDM	RG	UE	LJN	CA	SH	FT	PV
W	QSDB	GXL	IFK	YU	VO	JRW	TH	NA	EC	MP
X	AHEL	XGQ	SVU	IF	RM	PCK	DT	NO	BW	JY
Y	QWUJ	MKA	ENO	LH	BS	RPX	CG	DI	FY	VT

**NAVAIDS**

<b>Id</b>	<b>Name</b>	<b>Channel</b>	<b>Position</b>	<b>Elevation</b>
BCE	Bryce Canyon	75	N3741.35 W11218.23	9040
BIH	Bishop	33	N3722.62 W11821.99	4114
BLD	Boulder	114	N3559.75 W11451.82	3650
BTY	Beatty	94	N3648.54 W11644.86	2925
CDC	Cedar City	120	N3747.24 W11304.90	5463
DAG	Daggett	79	N3457.75 W11634.69	1760
EED	Needles	99	N3445.96 W11428.43	650
GFS	Goffs	91	N3507.87 W11510.59	4019
GRL	Groom Lake	18	N3713.91 W11548.16	4475
HEC	Hector	74	N3447.83 W11627.78	1854
ILC	Wilson Creek	110	N3815.02 W11423.65	9318
INS	Creech AFB	87	N3635.20 W11540.12	3101
LAS	McCarran Intl	116	N3604.78 W11509.59	2142
LSV	Nellis	12	N3614.68 W11501.50	1864
MLF	Milford	58	N3821.62 W11300.79	4977
MMM	Mormon Mesa	90	N3646.16 W11416.65	2120
MVA	Mina	98	N3833.92 W11801.97	7860
OAL	Coale Dale	124	N3800.20 W11746.23	4800
PGS	Peach Springs	57	N3537.48 W11332.67	4754
TPH	Tonopah Muni	119	N3801.84 W11702.01	5330
TQQ	Silverbow	77	N3748.00 W11647.00	5500
UTI	St George	23	N3705.29 W11335.53	2871



RWY 3L-21R  
 PCN 46 R/C/W/T  
 RWY 3R-21L  
 PCN 51 R/C/W/T  
 2017

PAR	RWY	CAT	MINIMA	ARP	ELEV	Scale
	21L	A B D E	2057 - 0.8 200 (200-0.8/1.6) GS 3°	36° 14.060° N 115° 01.058° W	1857 [ft] 566 [m]	0 300 600 900 1200 1500 [m] 0 1000 2000 3000 4000 5000 [ft]
	3R	A B D E	2057 - 0.8 200 (200-0.8/1.6) GS 3°			
	21R	A C D E	2257 - 1.2 350 (350-1.2/1.6)			
	3L	A C D E	2257 - 1.2 350 (350-1.2/1.6)			

RWY	TORA	TODA	ASDA	LDA	PSN	THR	ALS
21L	10051 [ft] 3063 [m]	11051 [ft] 3368 [m]	11051 [ft] 3368 [m]	10051 [ft] 3063 [m]	36°14.043' N	115°01.018' W	⊕
3R	10120 [ft] 3084 [m]	11120 [ft] 3398 [m]	11120 [ft] 3398 [m]	10120 [ft] 3084 [m]	36°13.029' N	115°02.038' W	

ATIS	NELLIS GROUND	NELLIS TOWER	NELLIS CONTROL	TACAN	ILS RWY 21L	NELLIS EAST	NELLIS WEST
270.100 MHz	275.800   121.800	327.000   132.55	317.525	LSV 12X	109.10 Mhz	384.400	385.000

# DREAM FOUR DEPARTURE DREAM4 | VALID 2014

**NELLIS AFB (KLSV)**  
LAS VEGAS, NEVADA

ATIS  
270.100  
NELLIS GROUND  
275.800  
NELLIS TOWER  
327.000  
NELLIS CONTROL  
317.525  
NELLIS DEP/APP EAST  
384.400  
BLACKJACK  
377.800

**DREAM**  
N3710.34  
W11459.53

**MINTT**  
LAS 351/38  
17,000

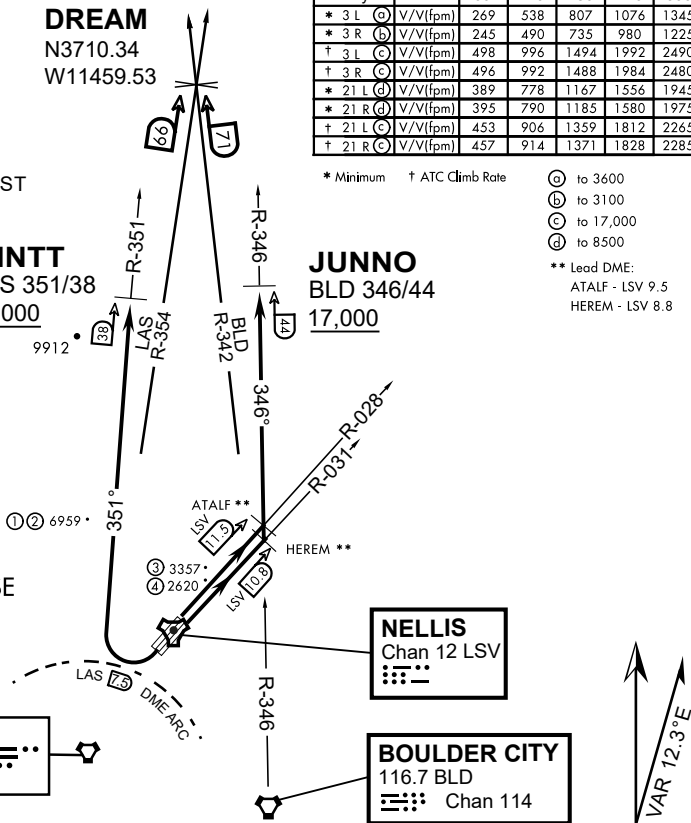
**JUNNO**  
BLD 346/44  
17,000

Rwy	Knots	60	120	180	240	300	360
* 3 L (A)	V/Vl(fpm)	269	538	807	1076	1345	1614
* 3 R (B)	V/Vl(fpm)	245	490	735	980	1225	1470
† 3 L (C)	V/Vl(fpm)	498	996	1494	1992	2490	2988
† 3 R (C)	V/Vl(fpm)	496	992	1488	1984	2480	2976
* 21 L (D)	V/Vl(fpm)	389	778	1167	1556	1945	2334
* 21 R (D)	V/Vl(fpm)	395	790	1185	1580	1975	2370
† 21 L (C)	V/Vl(fpm)	453	906	1359	1812	2265	2718
† 21 R (C)	V/Vl(fpm)	457	914	1371	1828	2285	2742

\* Minimum † ATC Climb Rate

- (A) to 3600
  - (B) to 3100
  - (C) to 17,000
  - (D) to 8500
- \*\* Lead DME:  
ATALF - LSV 9.5  
HEREM - LSV 8.8

- ① 12.24 NM from Rwy 21R
- ② 12.40 NM from Rwy 21L
- ③ 5.67 NM from Rwy 3L
- ④ 5.85 NM from Rwy 3R



## NOT FOR CIVIL USE

CAUTION: If unable to comply with restrictions advise ATC prior to departure.

## DEPARTURE ROUTE DESCRIPTION

### TAKE-OFF RWY 3L

- Fly runway heading to intercept the LSV TACAN R-028 then direct ATALF, intercept the BLD VORTAC R-346 then direct JUNNO, cross JUNNO at or above 17,000, then via assigned route.

### TAKE-OFF RWY 3R

- Fly runway heading to intercept the LSV TACAN R-031 then direct HEREM, intercept the BLD VORTAC R-346 then direct JUNNO, cross JUNNO at or above 17,000, then via assigned route.

### TAKE-OFF RWY 21L/R

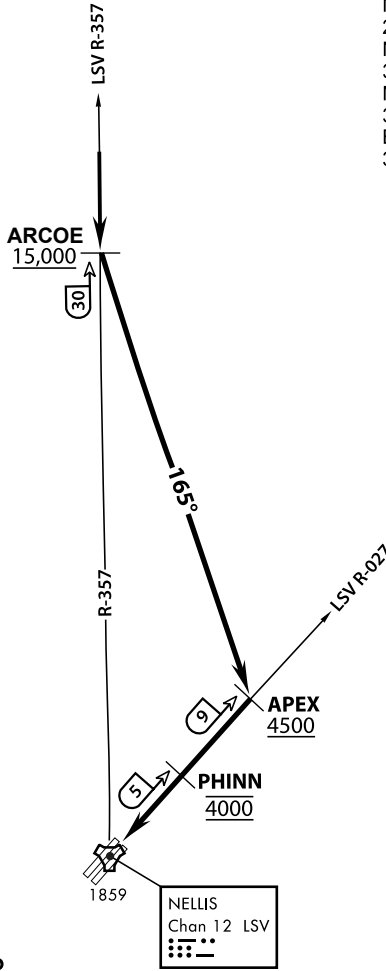
- Turn right to intercept LAS VORTAC R-351 outbound. Remain North of LAS 7.5 DME turning Northbound. Intercept LAS R-351 between 5000 and 6000, do not proceed West of LAS R-351. Cross MINTT at or above 17,000, then via assigned route.

NOISE ABATMENT PROCEDURES: Fly acc. Nellis Noise Abatement instructions

# DREAM FOUR DEPARTURE (DREAM4 • DREAM)



ATIS  
 270.100  
 NELLIS GROUND  
 275.800  
 NELLIS TOWER  
 327.000  
 NELLIS CONTROL  
 317.525  
 BLACKJACK  
 377.800



# VMC ONLY

PILOT RESPONSIBLE FOR  
TERRAIN AVOIDANCE

## APPROACH ROUTE DESCRIPTION

### OVERHEAD

Cross ARCOE at or above 15,000 MSL, then heading 165° to APEX.  
 Cross APEX at or above 4,500 MSL, report to tower.  
 Cross PHINN (LSV 027/5) at 4,000 MSL then descend to 3,500 MSL for Initial.

### VFR STRAIGHT IN RWY 21

Cross APEX at 4,000 feet MSL. Descend to be at 3,000 feet MSL at PHINN (LSV 027/5).