

MISSION DATA CARD

OPORD		Callsign		Mission		Date/Time	
3350/2024		Outlaw 1		Training		242000OCT24	
Task	Coop-Attack					Freq	
AO	LATNG					133.5	
Departure				Recovery			
HELICOPTER DEP				HELICOPTER ARR			
#	Callsign	Pilot	IFF	TCN	LSR	NET	
-1	Outlaw 1-1	Hudson	5711	1Y	1701		
-2	Outlaw 1-2	Mütze	5712	64Y	1702		
-3	Outlaw 1-3	Laud	5713	64X	1703		
-4	Outlaw 1-4	Warblade	5714	1X	1704		

LOADOUT

A/A		GUN	25% HEDP
A/G	4xAGM114L, 4xAGM114K	CHF	30
POD		FLR	60
TKS		FUEL	100%

TOLD

	Takeoff	Target	Joker	Bingo	Land
FUEL	2513				

AIRBASES

	Name	TCN	ATIS	GND	TWR	RWY	Elev	ILS
Dep	Nellis AFB	12X	270.1	275.8	327.0	21L	1850	109.1
Arr	Nellis AFB	12X	270.1	275.8	327.0	21L	1850	109.1

FLIGHTPLAN

#	Name	Navaid/Coords/DME	ALT	TOT
1	SOUTH GAP	LSV 160/2.9 (N36 11.940 W115 00.400)		
2	FARP (RP)	N36 12.700 W114 39.670		

COMMS

Radio	Usage
1	133.50
2	327.0 ; 377.8
3	35.35

NOTES

Radar-Handoff

Laser-Handoff

Buddy-Lase

Reichweite Kiowa-Laser

OTHER FLIGHTS

Callsign	Mission	Airframe	Freq	TCN	Grpld	Laser
Edelweiss 1	Training	3x F/A-18C	264.15	1/64		171X
AO	R64	Task	A2G Delivery			
Edelweiss 2	Training	1x F-16C	135.0	1/64		172X
AO		Task	BVR Course			
T-Rex 2	Training	4x A-10C	132.25	1/64	25	165X
AO	R63	Task	Dumb Bombs Strafe AAR			

RADIO CHANNELS

#	Freq	Name
1		Flight/Squadron specific
2	289.4	Nellis Clearance Delivery
3	275.8	Nellis Ground
4	327.0	Nellis Tower
5	385.4	Nellis Approach/Departure West
6	273.55	Nellis Approach/Departure East
7	317.525	Nellis Control -- Sally
8	254.4	Nellis Control-- Lee
9	305.6	SOF Bullseye
10	343.725	EMERGENCY SINGLE FRQ
11	270.1	Nellis ATIS
12	360.625	Creech AFB Tower
13	250.1	HAVE QUICK 13
14	251.1	HAVE QUICK 14
15	252.1	HAVE QUICK 15
16	377.8	Blackjack
17	265.0	KC-135 AR-641A
18	360.8	KC-135MPRS AR-635
19	319.8	KC-135MPRS AR-625
20	300.05	KC-135 AR-231V

RAMROD

0	1	2	3	4	5	6	7	8	9
P	R	O	D	U	C	T	I	V	E

KTC 1400 C

	0	1	2	3	4	5	6	7	8	9
A	NIGL	SWY	UMR	XC	OT	VBP	QH	DJ	KA	FE
B	EPJQ	TNM	XIW	HL	BC	YDU	AR	VG	FS	KO
C	DPOU	LIH	AKY	BQ	SJ	TFC	XE	MR	WG	VN
D	ILOX	PUC	HYR	WA	VF	SEG	QT	BM	ND	JK
E	PYGU	HDT	ACR	BQ	FO	NWM	IV	KE	XS	LJ
F	WPTY	JMV	RXH	UE	AN	LGS	BF	ID	KQ	CO
G	VJKR	OCA	MXN	BW	GQ	SIP	UY	EF	LD	HT
H	KIMQ	CUY	WTB	SJ	PN	FOR	HV	LG	XE	DA
I	HONW	CRD	GUP	TM	SY	FLE	VQ	AB	JX	KI
J	TPQE	JXM	FWH	YD	RL	IKV	UG	CN	AS	BO
K	JUEK	BGW	XTS	YI	DF	HCV	ON	RM	PL	AQ
L	SQOA	FIT	DUW	YB	LV	KJN	GH	CR	MX	EP
M	HLVR	TKQ	MUD	AJ	GC	PYE	XN	BF	IO	WS
N	JKSR	DLP	HMN	QF	BX	WAV	UG	EI	OC	TY
O	PBWJ	CNQ	VYU	TA	XF	ISH	DR	GE	KL	OM
P	HOJD	QMK	TPL	WI	NS	RCU	FB	XG	VE	AY
Q	DLOV	CSK	BUY	WH	RE	JPI	GX	NM	TF	QA
R	GSNE	KTC	UFD	YX	VW	IJL	BR	AQ	MH	OP
S	ASLD	YFM	JHU	WX	TB	VIG	OE	QP	NC	RK
T	UTIM	ERO	WVN	KY	CJ	GBH	PQ	LX	FS	AD
U	YQCG	LWE	TBP	SO	XD	AJM	UN	VI	HK	FR
V	KIFQ	BPW	YHJ	DE	VA	MOU	CT	XN	GR	LS
W	DSNU	OHJ	XFQ	GC	TI	AKL	BP	VM	RW	YE
X	URWA	LQJ	FGH	YV	IS	DEB	CX	MN	OP	KT
Y	LBXE	DVI	FNM	YS	QA	TWR	JG	HP	CK	UO

NAVAIDS

Id	Name	Channel	Position	Elevation
BCE	Bryce Canyon	75	N3741.35 W11218.23	9040
BIH	Bishop	33	N3722.62 W11821.99	4114
BLD	Boulder	114	N3559.75 W11451.82	3650
BTY	Beatty	94	N3648.54 W11644.86	2925
CDC	Cedar City	120	N3747.24 W11304.90	5463
DAG	Daggett	79	N3457.75 W11634.69	1760
EED	Needles	99	N3445.96 W11428.43	650
GFS	Goffs	91	N3507.87 W11510.59	4019
GRL	Groom Lake	18	N3713.91 W11548.16	4475
HEC	Hector	74	N3447.83 W11627.78	1854
ILC	Wilson Creek	110	N3815.02 W11423.65	9318
INS	Creech AFB	87	N3635.20 W11540.12	3101
LAS	McCarran Intl	116	N3604.78 W11509.59	2142
LSV	Nellis	12	N3614.68 W11501.50	1864
MLF	Milford	58	N3821.62 W11300.79	4977
MMM	Mormon Mesa	90	N3646.16 W11416.65	2120
MVA	Mina	98	N3833.92 W11801.97	7860
OAL	Coale Dale	124	N3800.20 W11746.23	4800
PGS	Peach Springs	57	N3537.48 W11332.67	4754
TPH	Tonopah Muni	119	N3801.84 W11702.01	5330
TQQ	Silverbow	77	N3748.00 W11647.00	5500
UTI	St George	23	N3705.29 W11335.53	2871



RWY 3L-21R
 PCN 46 R/C/W/T
 RWY 3R-21L
 PCN 51 R/C/W/T
 2017

PAR	RWY	CAT	MINIMA		ARP	ELEV	Scale 1:35'500	
	21L	A B D E	2057 - 0.8 200	(200-0.8/1.6) GS 3°	36° 14.060° N 115° 01.058° W	1857 [ft] 566 [m]	0	300
	3R	A B D E	2057 - 0.8 200	(200-0.8/1.6) GS 3°			600	900
	21R	A C D E	2257 - 1.2 350	(350-1.2/1.6)			1200	1500 [m]
	3L	A C D E	2257 - 1.2 350	(350-1.2/1.6)			0	1000
							2000	3000
							4000	5000 [ft]

RWY	TORA	TODA	ASDA	LDA	PSN	THR	ALS
21L	10051 [ft] 3063 [m]	11051 [ft] 3368 [m]	11051 [ft] 3368 [m]	10051 [ft] 3063 [m]	36°14.043' N	115°01.018' W	⊕
3R	10120 [ft] 3084 [m]	11120 [ft] 3398 [m]	11120 [ft] 3398 [m]	10120 [ft] 3084 [m]	36°13.029' N	115°02.038' W	

ATIS	NELLIS GROUND	NELLIS TOWER	NELLIS CONTROL	TACAN	ILS RWY 21L	NELLIS EAST	NELLIS WEST
270.100 MHz	275.800 121.800	327.000 132.55	317.525	LSV 12X	109.10 Mhz	384.400	385.000

HELICOPTER ARR/DEP VAD-CHART | VALID 2014

NELLIS AFB (KLSV)
LAS VEGAS, NEVADA

ATIS
270.100
NELLIS GROUND
275.800
NELLIS TOWER
327.000
BLACKJACK
377.800

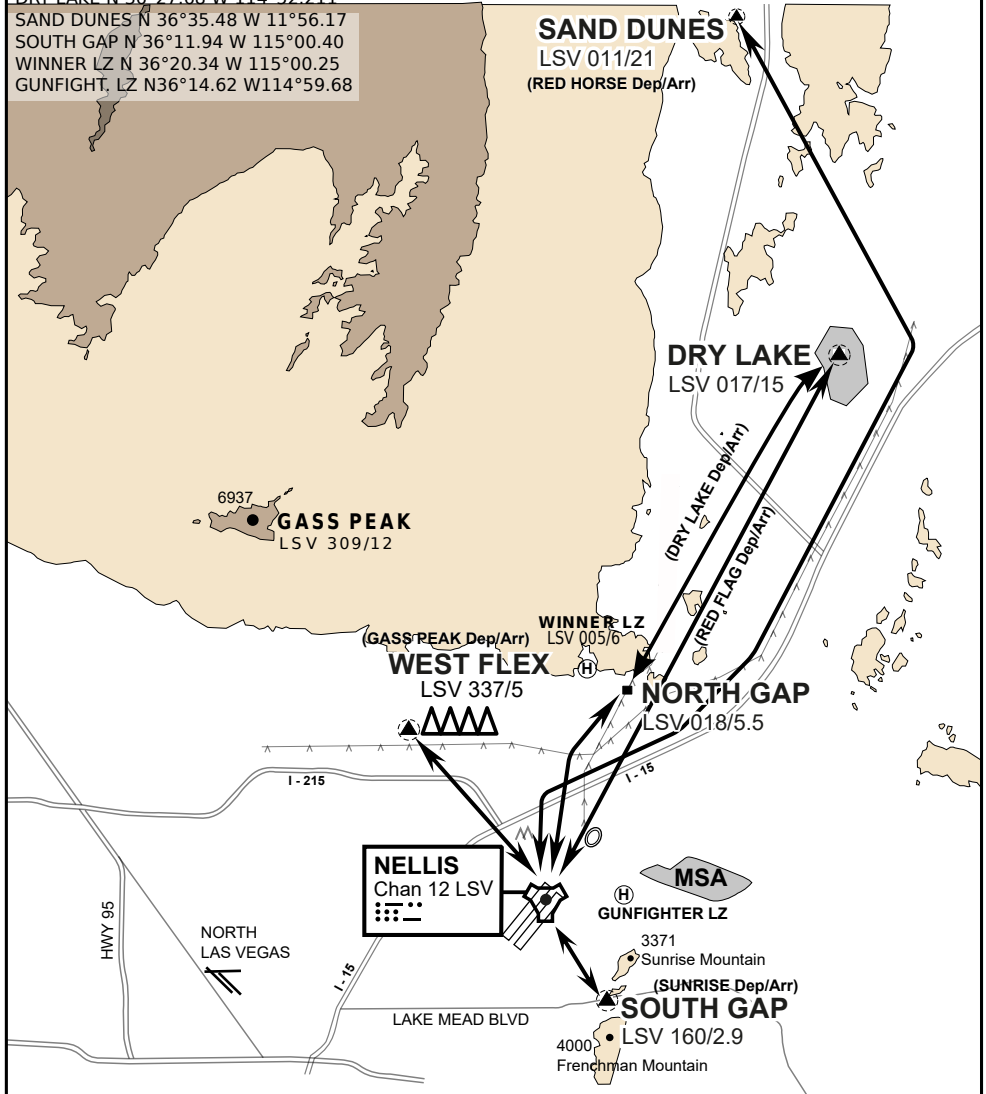
CAUTION: If unable to comply with restrictions advise ATC prior to departure.

VMC ONLY

if below WX Minima request SVFR



JOLLY PAD N 36°15.08 W 115°01.65
WEST FLEX N 36°18.64 W 115°08.00
NORTH GAP N 36°20.00 W 114°59.30
DRY LAKE N 36°27.68 W 114°52.211
SAND DUNES N 36°35.48 W 11°56.17
SOUTH GAP N 36°11.94 W 115°00.40
WINNER LZ N 36°20.34 W 115°00.25
GUNFIGHT, LZ N36°14.62 W114°59.68



vJABeG32NTRR NAV CHART

HELICOPTER ARRIVAL AND DEPARTURES ROUTES

v.110 22APR20

HELICOPTER ARR/DEP VAD-CHART | VALID 2014

NELLIS AFB (KLSV)
LAS VEGAS, NEVADA

ATIS
270.100
NELLIS GROUND
275.800
NELLIS TOWER
327.000
BLACKJACK
377.800

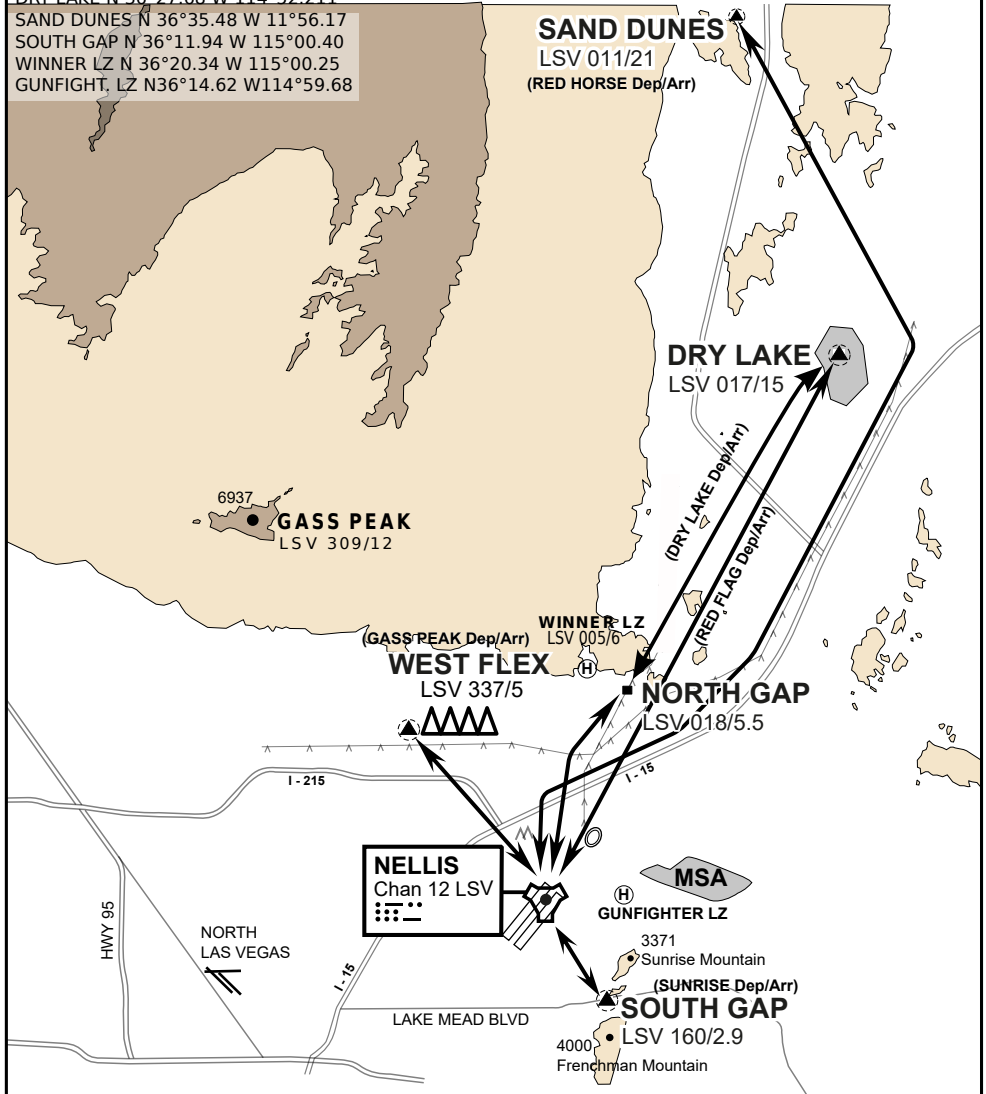
CAUTION: If unable to comply with restrictions advise ATC prior to departure.

VMC ONLY

if below WX Minima request SVFR



JOLLY PAD N 36°15.08 W 115°01.65
WEST FLEX N 36°18.64 W 115°08.00
NORTH GAP N 36°20.00 W 114°59.30
DRY LAKE N 36°27.68 W 114°52.211
SAND DUNES N 36°35.48 W 11°56.17
SOUTH GAP N 36°11.94 W 115°00.40
WINNER LZ N 36°20.34 W 115°00.25
GUNFIGHT, LZ N36°14.62 W114°59.68



vJABeG32NTRR NAV CHART

HELICOPTER ARRIVAL AND DEPARTURES ROUTES

v.110 22APR20