

**MISSION DATA CARD**

OPORD		Callsign		Mission		Date/Time		
3344/2024		Rattler 1		Training		212000OCT24		
Task	Radar-Training					Freq		
AO	LATNG					133.5		
Departure				Recovery				
HELICOPTER DEP				HELICOPTER ARR				
#	Callsign		Pilot		IFF	TCN	LSR	NET
-1	Rattler 1-1		Hudson		4641	1Y	1251	
-2	Rattler 1-2		Laud		4642	64Y	1252	
-3	Rattler 1-3		Mütze		4643	64X	1253	

**LOADOUT**

A/A						GUN	25% HEDP
A/G	8xAGM114L					CHF	30
POD						FLR	60
TKS						FUEL	100%

**TOLD**

	Takeoff	Target	Joker	Bingo	Land
FUEL	2513				

**AIRBASES**

	Name	TCN	ATIS	GND	TWR	RWY	Elev	ILS
Dep	Nellis AFB	12X	270.1	275.8	327.0	21L	1850	109.1
Arr	Nellis AFB	12X	270.1	275.8	327.0	21L	1850	109.1
Div	Creech AFB	87X	290.45	275.8	360.6			

**FLIGHTPLAN**

#	Name	Navaid/Coords/DME	ALT	TOT
1	SOUTH GAP	LSV 160/2.9 (N36 11.94 W115 00.40)		
2	LATN Ground	N36 15.37 W114 36.43		

**COMMS**

Radio	Usage
1	133.5
2	327.0, 275.8, 377.8
3	35.35
4	30.00

## OTHER FLIGHTS

Callsign	Mission	Airframe	Freq	TCN	Grpld	Laser
Edelweiss 5	Training	2x F/A-18C	134.55	1/64	41	167X
AO	Red Corridor	Task	Fam Flight			
Edelweiss 7	Training	2x F/A-18C	134.75	1/64	41	167X
AO	Blue Corridor	Task	Fam Flight			
Raptor 1	Training	2x F-16C	134.0	1/64		162X
AO	R66 / Leach Lake	Task	MAV Training			
Joker* 1	Training	1x Ground	348.7	1/64		170X
AO	R66 / Leach Lake	Task	Range Control - Callsign: JOSHUA			
T-Rex 2	Training	4x A-10C	132.25	1/64	25	165X
AO	R63	Task	Dumb Bombs Strafe			
Raptor 2	Training	2x F-16C	134.5	1/64		163X
AO	R66 / Leach Lake	Task	MAV Training			

**RADIO CHANNELS**

#	Freq	Name
1		Flight/Squadron specific
2	289.4	Nellis Clearance Delivery
3	275.8	Nellis Ground
4	327.0	Nellis Tower
5	385.4	Nellis Approach/Departure West
6	273.55	Nellis Approach/Departure East
7	317.525	Nellis Control -- Sally
8	254.4	Nellis Control-- Lee
9	305.6	SOF Bullseye
10	343.725	EMERGENCY SINGLE FRQ
11	270.1	Nellis ATIS
12	360.625	Creech AFB Tower
13	250.1	HAVE QUICK 13
14	251.1	HAVE QUICK 14
15	252.1	HAVE QUICK 15
16	377.8	Blackjack
17	265.0	KC-135 AR-641A
18	360.8	KC-135MPRS AR-635
19	319.8	KC-135MPRS AR-625
20	300.05	KC-135 AR-231V

**RAMROD**

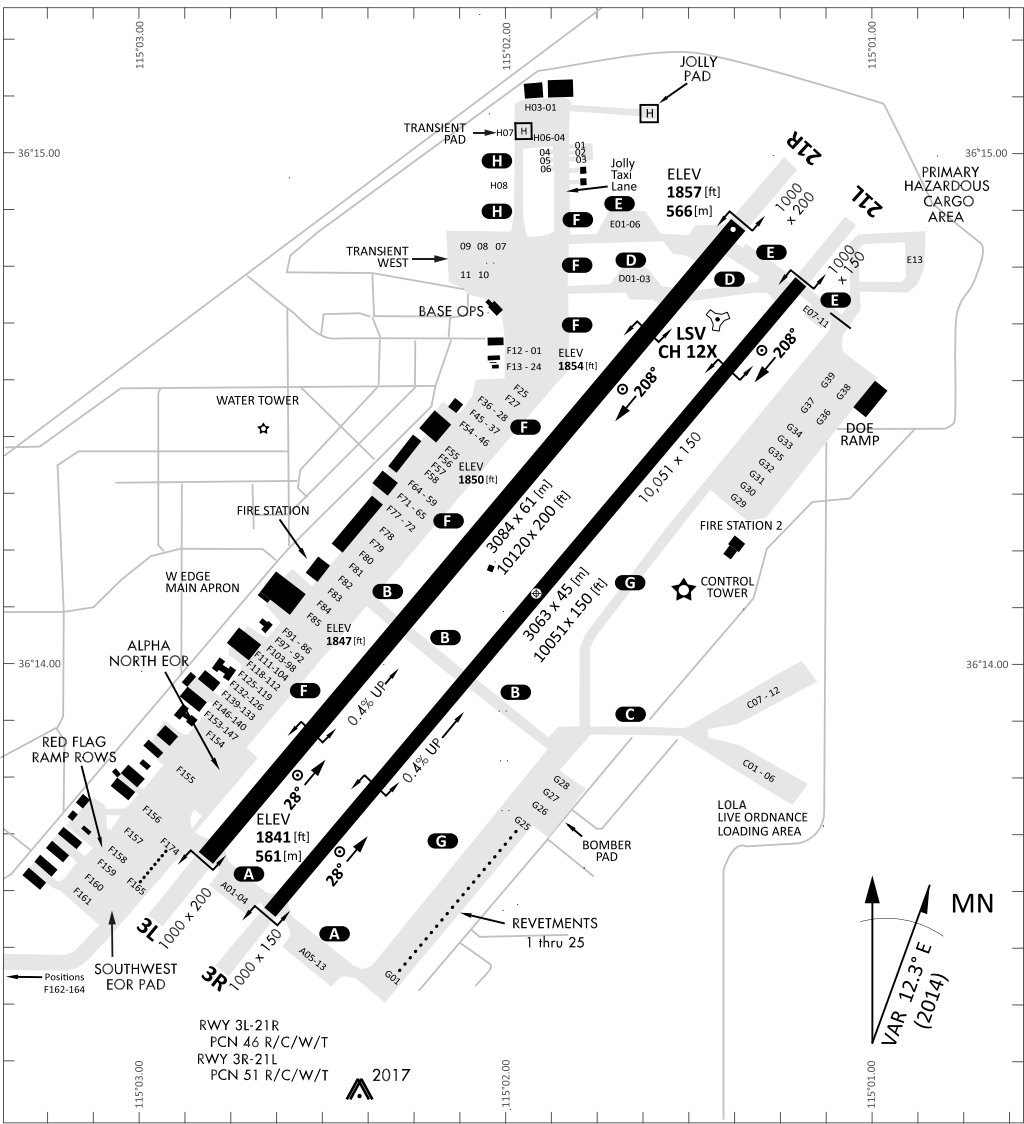
0	1	2	3	4	5	6	7	8	9
M	I	S	F	O	R	T	U	N	E

**KTC 1400 C**

	0	1	2	3	4	5	6	7	8	9
A	MOVJ	PGT	QAS	KY	HC	IUB	RX	FL	WD	NE
B	XDYF	KTQ	MJS	OE	PI	NAB	VU	GH	WR	LC
C	WCID	PHR	FOV	YJ	NG	MEB	AL	QT	XK	SU
D	GQAY	UKW	MTJ	BF	PC	HID	RX	SL	VO	EN
E	LJPQ	EXF	URK	OD	YV	AHN	BI	TM	WG	SC
F	MHBP	LJG	XIU	TV	DS	KRN	FQ	AY	EW	CO
G	AEWJ	UPD	XBK	CN	FY	TLS	RO	IG	HM	VQ
H	HLBX	FYN	MDS	VJ	QA	EUO	WK	RP	GC	IT
I	PONJ	LUW	CBQ	RF	GK	MHI	DX	YE	VT	AS
J	YGTC	PKM	JIN	VL	HA	QWO	EU	FX	DB	RS
K	GEVR	KNX	UOL	DJ	HA	MYB	SW	IQ	CT	FP
L	TGWU	YPA	KBL	XD	FO	EMR	QN	SH	IJ	VC
M	YQWF	CUG	HTX	LM	AO	NES	JD	VK	IB	RP
N	LEDS	GIP	WRO	TV	QB	NJU	KC	HX	FY	MA
O	OCWF	TGH	DBA	YM	RP	VJS	UE	IL	KX	QN
P	OGLE	YAH	TBS	QR	DX	JPM	IC	VW	KN	FU
Q	UIRM	BLO	VKY	CS	AJ	FTD	XQ	GP	NE	HW
R	AGRM	KLB	XCN	WY	DS	FJE	TO	VQ	UP	HI
S	FSIX	ORY	PMH	NB	UV	GCD	QL	JW	EK	TA
T	BQYM	PRT	NWF	EA	GH	OJS	UX	IV	DC	LK
U	VEKQ	UCH	NTW	RG	IP	FXA	OB	MD	JY	LS
V	TWPH	SNV	JGR	LE	OA	BIY	XQ	FD	UC	MK
W	JWQG	YOA	NIC	UB	RL	TEX	FD	PS	MV	HK
X	JLTQ	POK	SNH	WD	FV	MYX	AU	CB	GE	RI
Y	DOEW	VTJ	NRL	QC	XY	AFS	KI	GU	PB	MH

**NAVAIDS**

<b>Id</b>	<b>Name</b>	<b>Channel</b>	<b>Position</b>	<b>Elevation</b>
BCE	Bryce Canyon	75	N3741.35 W11218.23	9040
BIH	Bishop	33	N3722.62 W11821.99	4114
BLD	Boulder	114	N3559.75 W11451.82	3650
BTY	Beatty	94	N3648.54 W11644.86	2925
CDC	Cedar City	120	N3747.24 W11304.90	5463
DAG	Daggett	79	N3457.75 W11634.69	1760
EED	Needles	99	N3445.96 W11428.43	650
GFS	Goffs	91	N3507.87 W11510.59	4019
GRL	Groom Lake	18	N3713.91 W11548.16	4475
HEC	Hector	74	N3447.83 W11627.78	1854
ILC	Wilson Creek	110	N3815.02 W11423.65	9318
INS	Creech AFB	87	N3635.20 W11540.12	3101
LAS	McCarran Intl	116	N3604.78 W11509.59	2142
LSV	Nellis	12	N3614.68 W11501.50	1864
MLF	Milford	58	N3821.62 W11300.79	4977
MMM	Mormon Mesa	90	N3646.16 W11416.65	2120
MVA	Mina	98	N3833.92 W11801.97	7860
OAL	Coale Dale	124	N3800.20 W11746.23	4800
PGS	Peach Springs	57	N3537.48 W11332.67	4754
TPH	Tonopah Muni	119	N3801.84 W11702.01	5330
TQQ	Silverbow	77	N3748.00 W11647.00	5500
UTI	St George	23	N3705.29 W11335.53	2871



RWY 3L-21R  
 PCN 46 R/C/W/T  
 RWY 3R-21L  
 PCN 51 R/C/W/T  
 2017

PAR	RWY	CAT	MINIMA			ARP	ELEV	Scale 1:35'500				
	21L	A B D E	2057 - 0.8 200 (200-0.8/1.6)	GS 3°	36° 14.060° N 115° 01.058° W	1857 [ft] 566 [m]	0	300	600	900	1200	1500 [m]
	3R	A B D E	2057 - 0.8 200 (200-0.8/1.6)	GS 3°			0	1000	2000	3000	4000	5000 [ft]
SRA	21R	A C D E	2257 - 1.2 350 (350-1.2/1.6)									
	3L	A C D E	2257 - 1.2 350 (350-1.2/1.6)									

RWY	TORA	TODA	ASDA	LDA	PSN	THR	ALS
21L	10051 [ft] 3063 [m]	11051 [ft] 3368 [m]	11051 [ft] 3368 [m]	10051 [ft] 3063 [m]	36°14.043' N	115°01.018' W	⊕
3R	10120 [ft] 3084 [m]	11120 [ft] 3398 [m]	11120 [ft] 3398 [m]	10120 [ft] 3084 [m]	36°13.029' N	115°02.038' W	

ATIS	NELLIS GROUND	NELLIS TOWER	NELLIS CONTROL	TACAN	ILS RWY 21L	NELLIS EAST	NELLIS WEST
270.100 MHz	275.800   121.800	327.000   132.55	317.525	LSV 12X	109.10 Mhz	384.400	385.000

# HELICOPTER ARR/DEP VAD-CHART | VALID 2014

**NELLIS AFB (KLSV)**  
LAS VEGAS, NEVADA

ATIS  
270.100  
NELLIS GROUND  
275.800  
NELLIS TOWER  
327.000  
BLACKJACK  
377.800

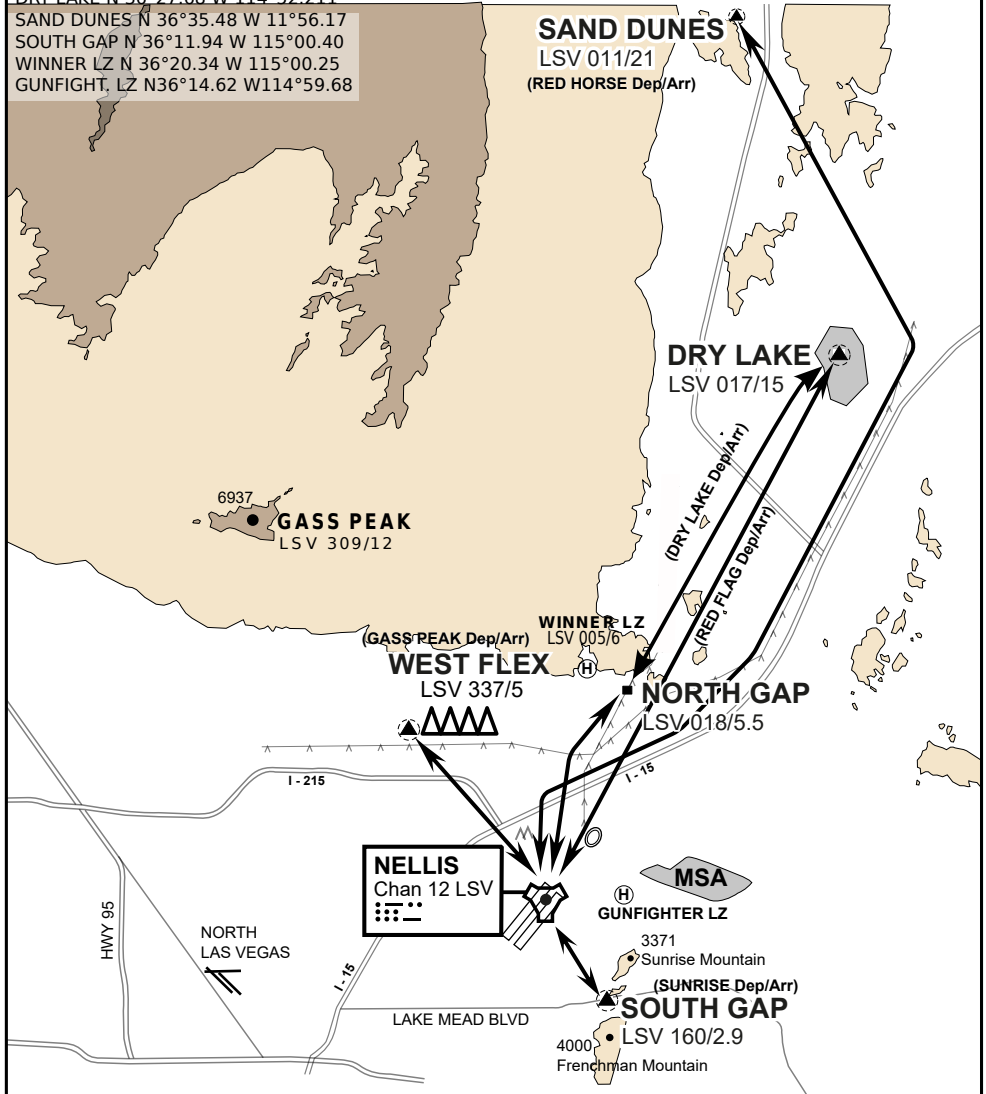
CAUTION: If unable to comply with restrictions advise ATC prior to departure.

## VMC ONLY

if below WX Minima request SVFR



JOLLY PAD N 36°15.08 W 115°01.65  
WEST FLEX N 36°18.64 W 115°08.00  
NORTH GAP N 36°20.00 W 114°59.30  
DRY LAKE N 36°27.68 W 114°52.211  
SAND DUNES N 36°35.48 W 11°56.17  
SOUTH GAP N 36°11.94 W 115°00.40  
WINNER LZ N 36°20.34 W 115°00.25  
GUNFIGHT, LZ N36°14.62 W114°59.68



vJABeG32NTRR NAV CHART

# HELICOPTER ARRIVAL AND DEPARTURES ROUTES

v.110 22APR20



# HELICOPTER ARR/DEP VAD-CHART | VALID 2014

**NELLIS AFB (KLSV)**  
LAS VEGAS, NEVADA

ATIS  
270.100  
NELLIS GROUND  
275.800  
NELLIS TOWER  
327.000  
BLACKJACK  
377.800

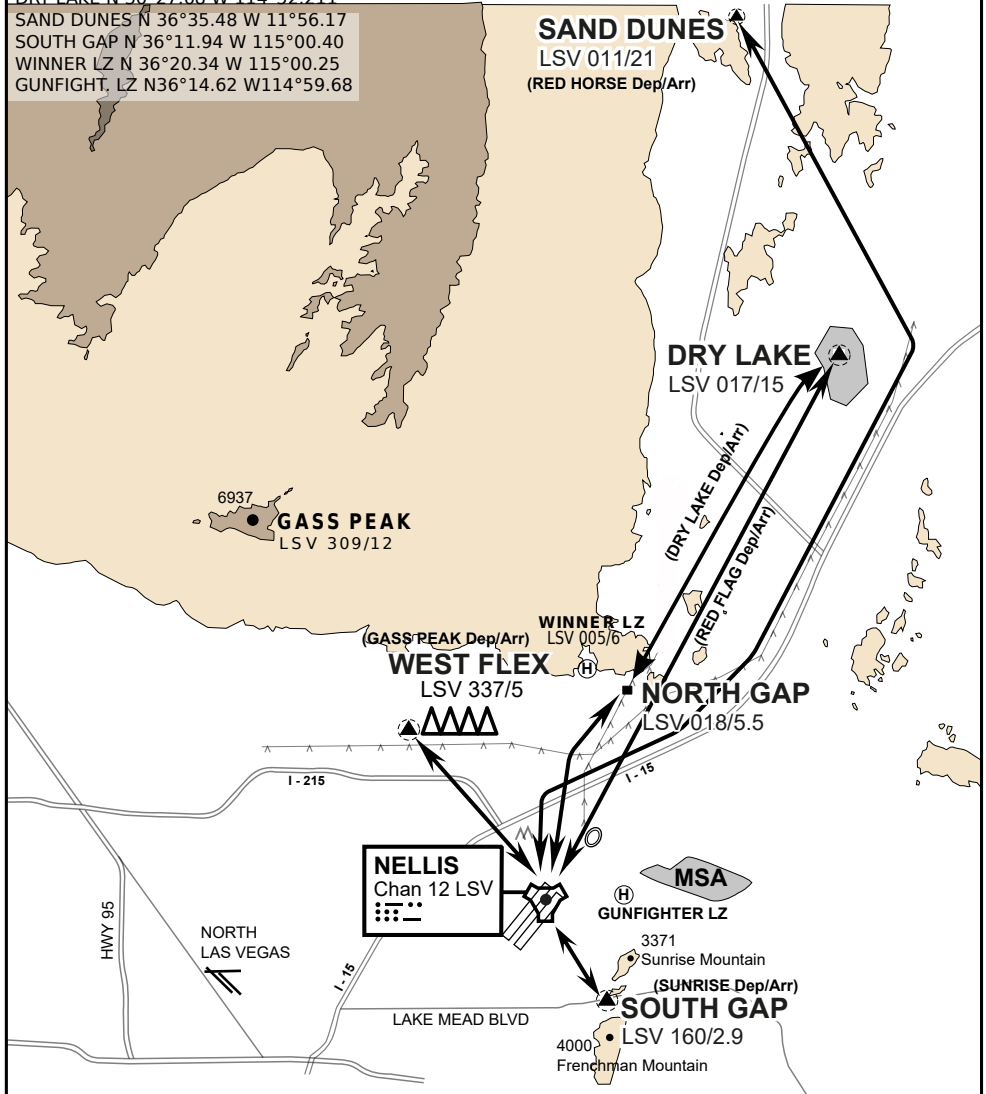
CAUTION: If unable to comply  
with restrictions advise ATC  
prior to departure.

## VMC ONLY

if below WX Minima request SVFR



JOLLY PAD N 36°15.08 W 115°01.65  
WEST FLEX N 36°18.64 W 115°08.00  
NORTH GAP N 36°20.00 W 114°59.30  
DRY LAKE N 36°27.68 W 114°52.211  
SAND DUNES N 36°35.48 W 11°56.17  
SOUTH GAP N 36°11.94 W 115°00.40  
WINNER LZ N 36°20.34 W 115°00.25  
GUNFIGHT, LZ N36°14.62 W114°59.68



vJABeG32NTRR NAV CHART

# HELICOPTER ARRIVAL AND DEPARTURES ROUTES

v.110 22APR20



INDIAN SPRINGS, NEVADA

TACAN INS Chan 87	APCH CRS 065°	Rwy ldg TDZE 3133	9002 3113
		Arpt Elev 3113	

INDIAN SPRINGS AF AUX (KINS)

**▼** \* MISSED APPROACH: Straight ahead to INS TACAN, intercept INS R-outbound, cross 17 DME at or above 9500, then direkt KSV TACAN 114

NELLIS CON

CREECH AFB TOWER  
118.30 60.60

GND CON

**NOT FOR CIVIL USE**

FOR USE UNDER BASIC VFR  
WEATHER MINIMUMS ONLY

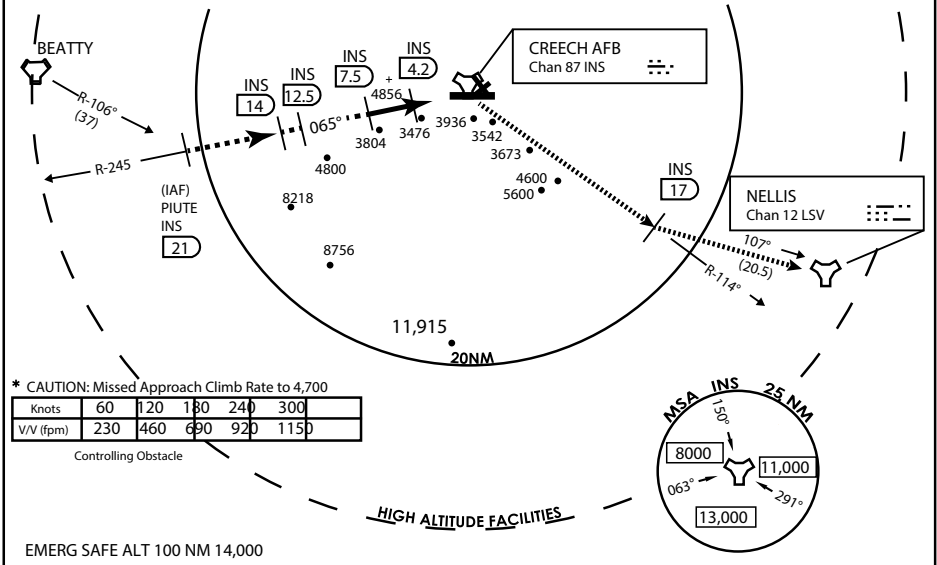
PILOT IS RESPONSIBLE FOR TERRAIN/OBSTACLE AVOIDANCE AND APPROPRIATE VFR CLOUD CLEARANCE FOR ALL

**CAUTION:** Descent gradients are greater than allowed under standard TERPS criteria and inbound course does not meet straight-in criteria

**CAUTION:** Final approach course crosses Runway centerline at MIDFIELD. Maneuvering left of course required prior to landing. Do not Maneuver farther north than the INS R- 258

Modified by viaBog 66 for use with DCS  
NOT FOR REAL LIFE NAVIGATION

Modified by viaBog 66 for use with DCS  
NOT FOR REAL LIFE NAVIGATION



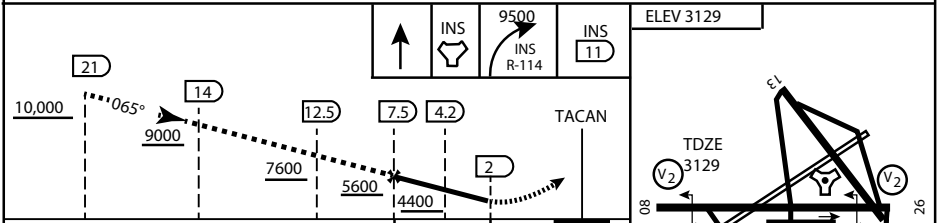
\* CAUTION: Missed Approach Climb Rate to 4,700

Knots	60	120	180	240	300
V/V (fpm)	230	460	690	920	1150

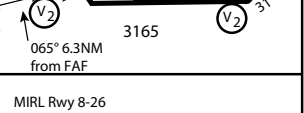
Controlling Obstacle

HIGH ALTITUDE FACILITIES

EMERG SAFE ALT 100 NM 14,000



CATEGORY	A	B	C	D	E
S-8	3760-1 ½	627 (700-1 ½)	3760-1¾ 627 (700-1¾)	3760-2 627 (700-2)	3760-2¼ 627 (700-2¼)
CIRCLING	NOT AUTHORIZED				



CITY OF INDIAN, NEVADA

INDIAN SPRINGS AF AUX (KINS)

(FOR DAY VFR USE ONLY)



# AIRPORT DIAGRAM

ATIS  
122.5  
CREECH TOWER  
118.4 360.7 38.65  
GND CON  
118.3 275.8  
CLNC DEL

115°42'W

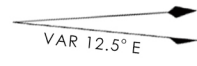
FIELD  
ELEV  
3127

80

972 X 150

HOT  
CARGO  
PAD

BAK-12



WEST  
EOR

115°41'W

476 vFG JAN 2019

CONTROL  
TOWER  
BASE  
OPS

RPA LOLA  
WEST

RPA LOLA  
EAST

LOLA /  
HUNG  
ORDNANCE

199 X 100  
ELEV  
3127  
RUNWAY  
31/13  
MQ/RQ-1  
ONLY

9002 X 150

258.5°

860 X 100

313.8°

4064 X 100

115°40'W

BAK-12

ELEV  
3127

EAST  
EOR

1030 X 150

26

476 vFG JAN 2019

# AIRPORT DIAGRAM