

MISSION DATA CARD

OPORD		Callsign		Mission		Date/Time		
3333/2024		Edelweiss 7		Training		212100OCT24		
Task	Fam Flight					Freq		
AO	Blue Corridor					134.75		
Departure				Recovery				
DREAM FOUR				ACTON				
#	Callsign		Pilot		IFF	TCN	LSR	NET

LOADOUT

A/A	2xA9X, A120C				GUN	100% HEI-T	
A/G					CHF	60	
POD	TGP				FLR	60	
TKS	3xFPU-8A				FUEL	100%	

TOLD

	Takeoff	Target	Joker	Bingo	Land
FUEL	17535		3500	2500	

AIRBASES

	Name	TCN	ATIS	GND	TWR	RWY	Elev	ILS
Dep	Nellis AFB	12X	270.1	275.8	327.0	21L	1850	109.1
Arr	Nellis AFB	12X	270.1	275.8	327.0	21L	1850	109.1
Div	Creech AFB	87X	290.45	275.8	360.6			

FLIGHTPLAN

#	Name	Navaid/Coords/DME	ALT	TOT
1	JUNNO	BLD 346/44 (N36 43.800 W114 52.770)	20000	
2	DREAM	LAS 354/66 BLD 342/71 (N37 10.340 W114 59.530)	20000	
3	TROUTT	LSV 323/63 (N37 17 W115 07.050)	20000	
4	Student Gap	LSV 349/82 (N37 37 W115)	20000	
5	BIGHORN	LSV 347/97 (N37 52 W115 02)	28000	
6	ELKXX	LSV 001/100 (N37 52 W114 30)	28000	
7	MOOSE	LSV 016/94 (N37 36.770 W114 04.420)	28000	
8	TIMBR	LSV 011/33 (N36 45 W114 44.580)	28000	
9	ACTON	LSV 021/36 (N36 44.520 W114 36.450)	10000	

COMMS

Radio	Usage
1	(3), (4), (16),
2	(19) ARC1
3	MIDS A: 22 / B: 44

SUPPORT**Tanker**

Callsign	TCN	Freq	ALT	TAS
ARCO 1	113Y	319.8	FL250	450
	Pos	AR-625: MVA 168/77 (N3717 W11802)		
SHELL 2	115Y	360.8	FL250	430
	Pos	AR-635: MLF 260/127 (N3831 W11542)		

AWACS

Callsign	Freq	ALT	Pos
MAGIC	377.8	FL270	N3749 W11417 - N3713 W11446

OTHER FLIGHTS

Callsign	Mission	Airframe	Freq	TCN	Grpld	Laser
Edelweiss 5	Training	2x F/A-18C	134.55	1/64	41	167X
AO	Red Corridor	Task	Fam Flight			
Raptor 1	Training	2x F-16C	134.0	1/64		162X
AO	R66 / Leach Lake	Task	MAV Training			
Joker* 1	Training	1x Ground	348.7	1/64		170X
AO	R66 / Leach Lake	Task	Range Control - Callsign: JOSHUA			
Rattler 1	Training	4x AH-64D	133.5	1/64		125X
AO	LATNG	Task	Radar-Training			
T-Rex 2	Training	4x A-10C	132.25	1/64	25	165X
AO	R63	Task	Dumb Bombs Strafe			
Raptor 2	Training	2x F-16C	134.5	1/64		163X
AO	R66 / Leach Lake	Task	MAV Training			

RADIO CHANNELS

#	Freq	Name
1		Flight/Squadron specific
2	289.4	Nellis Clearance Delivery
3	275.8	Nellis Ground
4	327.0	Nellis Tower
5	385.4	Nellis Approach/Departure West
6	273.55	Nellis Approach/Departure East
7	317.525	Nellis Control -- Sally
8	254.4	Nellis Control-- Lee
9	305.6	SOF Bullseye
10	343.725	EMERGENCY SINGLE FRQ
11	270.1	Nellis ATIS
12	360.625	Creech AFB Tower
13	250.1	HAVE QUICK 13
14	251.1	HAVE QUICK 14
15	252.1	HAVE QUICK 15
16	377.8	Blackjack
17	265.0	KC-135 AR-641A
18	360.8	KC-135MPRS AR-635
19	319.8	KC-135MPRS AR-625
20	300.05	KC-135 AR-231V

RAMROD

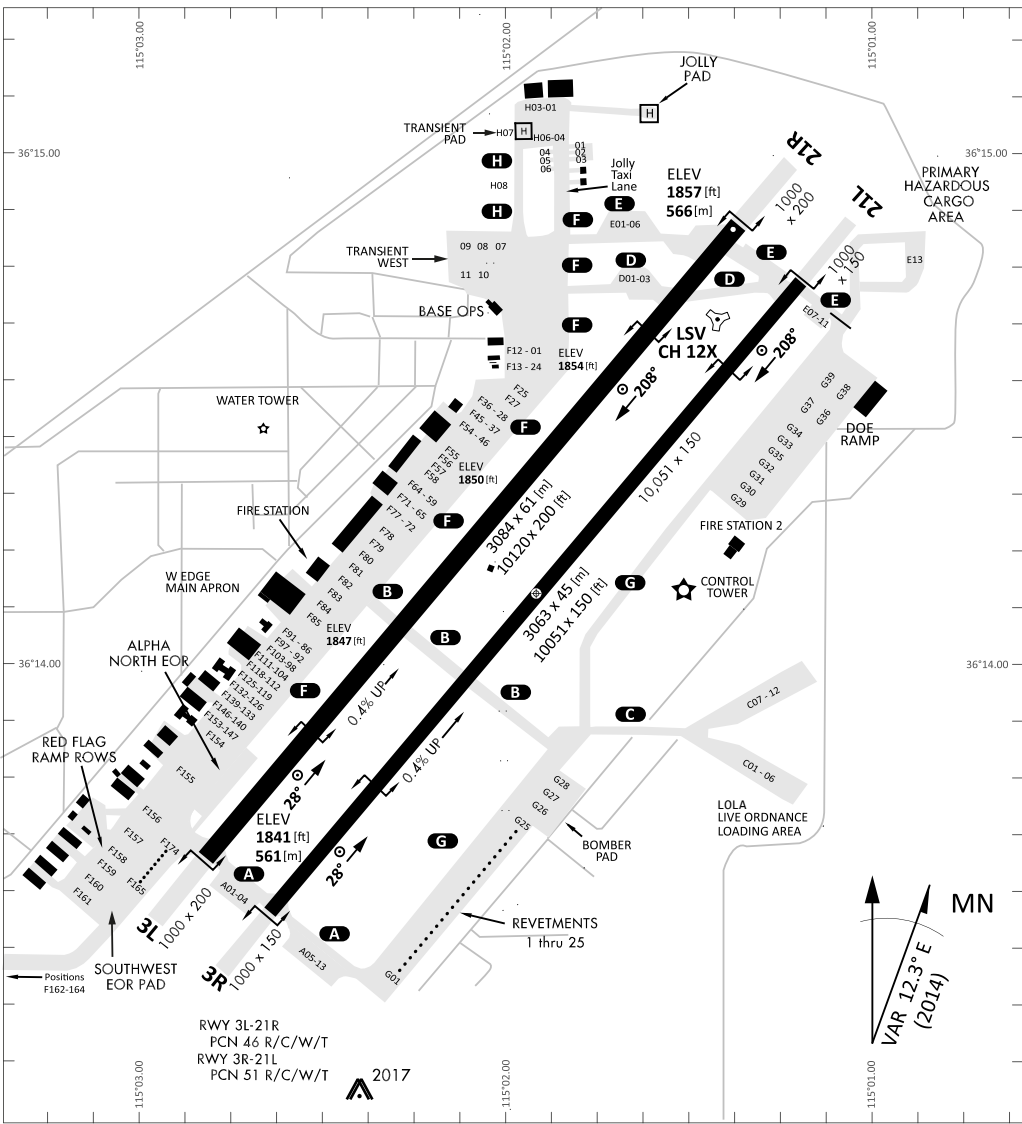
0	1	2	3	4	5	6	7	8	9
M	I	S	F	O	R	T	U	N	E

KTC 1400 C

	0	1	2	3	4	5	6	7	8	9
A	MOVJ	PGT	QAS	KY	HC	IUB	RX	FL	WD	NE
B	XDYF	KTQ	MJS	OE	PI	NAB	VU	GH	WR	LC
C	WCID	PHR	FOV	YJ	NG	MEB	AL	QT	XK	SU
D	GQAY	UKW	MTJ	BF	PC	HID	RX	SL	VO	EN
E	LJPQ	EXF	URK	OD	YV	AHN	BI	TM	WG	SC
F	MHBP	LJG	XIU	TV	DS	KRN	FQ	AY	EW	CO
G	AEWJ	UPD	XBK	CN	FY	TLS	RO	IG	HM	VQ
H	HLBX	FYN	MDS	VJ	QA	EUO	WK	RP	GC	IT
I	PONJ	LUW	CBQ	RF	GK	MHI	DX	YE	VT	AS
J	YGTC	PKM	JIN	VL	HA	QWO	EU	FX	DB	RS
K	GEVR	KNX	UOL	DJ	HA	MYB	SW	IQ	CT	FP
L	TGWU	YPA	KBL	XD	FO	EMR	QN	SH	IJ	VC
M	YQWF	CUG	HTX	LM	AO	NES	JD	VK	IB	RP
N	LEDS	GIP	WRO	TV	QB	NJU	KC	HX	FY	MA
O	OCWF	TGH	DBA	YM	RP	VJS	UE	IL	KX	QN
P	OGLE	YAH	TBS	QR	DX	JPM	IC	VW	KN	FU
Q	UIRM	BLO	VKY	CS	AJ	FTD	XQ	GP	NE	HW
R	AGRM	KLB	XCN	WY	DS	FJE	TO	VQ	UP	HI
S	FSIX	ORY	PMH	NB	UV	GCD	QL	JW	EK	TA
T	BQYM	PRT	NWF	EA	GH	OJS	UX	IV	DC	LK
U	VEKQ	UCH	NTW	RG	IP	FXA	OB	MD	JY	LS
V	TWPH	SNV	JGR	LE	OA	BIY	XQ	FD	UC	MK
W	JWQG	YOA	NIC	UB	RL	TEX	FD	PS	MV	HK
X	JLTQ	POK	SNH	WD	FV	MYX	AU	CB	GE	RI
Y	DOEW	VTJ	NRL	QC	XY	AFS	KI	GU	PB	MH

NAVAIDS

Id	Name	Channel	Position	Elevation
BCE	Bryce Canyon	75	N3741.35 W11218.23	9040
BIH	Bishop	33	N3722.62 W11821.99	4114
BLD	Boulder	114	N3559.75 W11451.82	3650
BTY	Beatty	94	N3648.54 W11644.86	2925
CDC	Cedar City	120	N3747.24 W11304.90	5463
DAG	Daggett	79	N3457.75 W11634.69	1760
EED	Needles	99	N3445.96 W11428.43	650
GFS	Goffs	91	N3507.87 W11510.59	4019
GRL	Groom Lake	18	N3713.91 W11548.16	4475
HEC	Hector	74	N3447.83 W11627.78	1854
ILC	Wilson Creek	110	N3815.02 W11423.65	9318
INS	Creech AFB	87	N3635.20 W11540.12	3101
LAS	McCarran Intl	116	N3604.78 W11509.59	2142
LSV	Nellis	12	N3614.68 W11501.50	1864
MLF	Milford	58	N3821.62 W11300.79	4977
MMM	Mormon Mesa	90	N3646.16 W11416.65	2120
MVA	Mina	98	N3833.92 W11801.97	7860
OAL	Coale Dale	124	N3800.20 W11746.23	4800
PGS	Peach Springs	57	N3537.48 W11332.67	4754
TPH	Tonopah Muni	119	N3801.84 W11702.01	5330
TQQ	Silverbow	77	N3748.00 W11647.00	5500
UTI	St George	23	N3705.29 W11335.53	2871



RWY 3L-21R
 PCN 46 R/C/W/T
 RWY 3R-21L
 PCN 51 R/C/W/T
 2017

PAR	RWY	CAT	MINIMA		ARP	ELEV	Scale 1:35'500	
	21L	A B D E	2057 - 0.8 200 (200-0.8/1.6)	GS 3°	36° 14.060° N 115° 01.058° W	1857 [ft] 566 [m]	0 300 600 900 1200 1500 [m]	
	3R	A B D E	2057 - 0.8 200 (200-0.8/1.6)	GS 3°			0 1000 2000 3000 4000 5000 [ft]	
SRA	21R	A C D E	2257 - 1.2 350 (350-1.2/1.6)					
	3L	A C D E	2257 - 1.2 350 (350-1.2/1.6)					

RWY	TORA	TODA	ASDA	LDA	PSN	THR	ALS
21L	10051 [ft] 3063 [m]	11051 [ft] 3368 [m]	11051 [ft] 3368 [m]	10051 [ft] 3063 [m]	36°14.043' N	115°01.018' W	⊕
3R	10120 [ft] 3084 [m]	11120 [ft] 3398 [m]	11120 [ft] 3398 [m]	10120 [ft] 3084 [m]	36°13.029' N	115°02.038' W	

ATIS	NELLIS GROUND	NELLIS TOWER	NELLIS CONTROL	TACAN	ILS RWY 21L	NELLIS EAST	NELLIS WEST
270.100 MHz	275.800 121.800	327.000 132.55	317.525	LSV 12X	109.10 Mhz	384.400	385.000

DREAM FOUR DEPARTURE DREAM4 | VALID 2014

NELLIS AFB (KLSV)

LAS VEGAS, NEVADA

ATIS
270.100
NELLIS GROUND
275.800
NELLIS TOWER
327.000
NELLIS CONTROL
317.525
NELLIS DEP/APP EAST
384.400
BLACKJACK
377.800

DREAM

N3710.34
W11459.53

MINTT
LAS 351/38
17,000

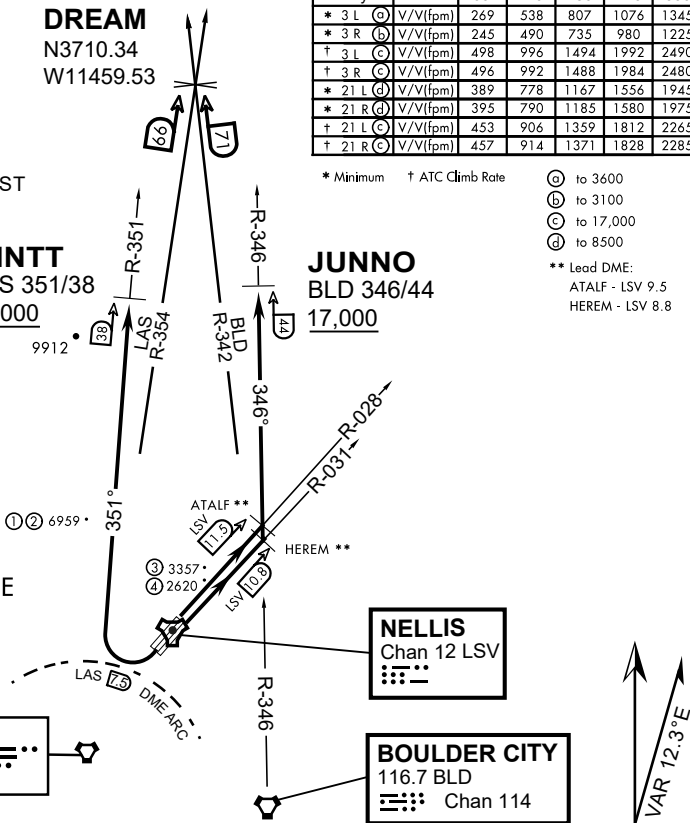
JUNNO
BLD 346/44
17,000

Rwy	Knots	60	120	180	240	300	360
* 3 L (A)	V/V(fpm)	269	538	807	1076	1345	1614
* 3 R (B)	V/V(fpm)	245	490	735	980	1225	1470
† 3 L (C)	V/V(fpm)	498	996	1494	1992	2490	2988
† 3 R (C)	V/V(fpm)	496	992	1488	1984	2480	2976
* 21 L (D)	V/V(fpm)	389	778	1167	1556	1945	2334
* 21 R (D)	V/V(fpm)	395	790	1185	1580	1975	2370
† 21 L (C)	V/V(fpm)	453	906	1359	1812	2265	2718
† 21 R (C)	V/V(fpm)	457	914	1371	1828	2285	2742

* Minimum † ATC Climb Rate

- (A) to 3600
 - (B) to 3100
 - (C) to 17,000
 - (D) to 8500
- ** Lead DME:
ATALF - LSV 9.5
HEREM - LSV 8.8

- ① 12.24 NM from Rwy 21R
- ② 12.40 NM from Rwy 21L
- ③ 5.67 NM from Rwy 3L
- ④ 5.85 NM from Rwy 3R



NOT FOR CIVIL USE

CAUTION: If unable to comply with restrictions advise ATC prior to departure.

DEPARTURE ROUTE DESCRIPTION

TAKE-OFF RWY 3L

- Fly runway heading to intercept the LSV TACAN R-028 then direct ATALF, intercept the BLD VORTAC R-346 then direct JUNNO, cross JUNNO at or above 17,000, then via assigned route.

TAKE-OFF RWY 3R

- Fly runway heading to intercept the LSV TACAN R-031 then direct HEREM, intercept the BLD VORTAC R-346 then direct JUNNO, cross JUNNO at or above 17,000, then via assigned route.

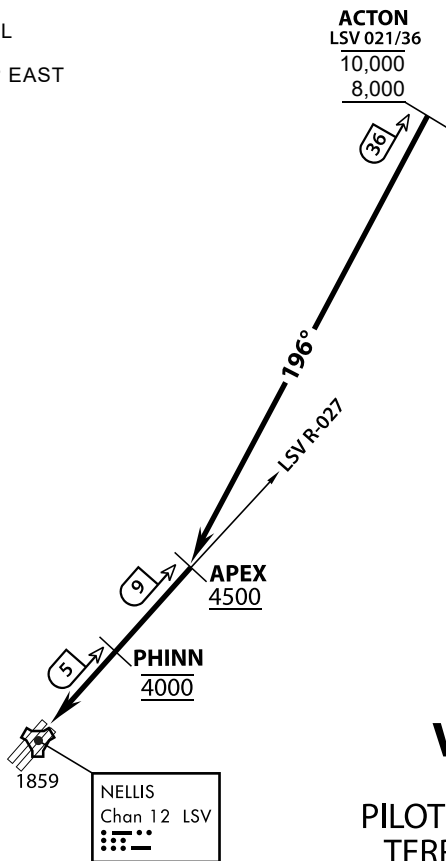
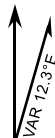
TAKE-OFF RWY 21L/R

- Turn right to intercept LAS VORTAC R-351 outbound. Remain North of LAS 7.5 DME turning Northbound. Intercept LAS R-351 between 5000 and 6000, do not proceed West of LAS R-351. Cross MINTT at or above 17,000, then via assigned route.

NOISE ABATMENT PROCEDURES: Fly acc. Nellis Noise Abatement instructions

DREAM FOUR DEPARTURE (DREAM4 • DREAM)

ATIS
 270.100
 NELLIS GROUND
 275.800
 NELLIS TOWER
 327.000
 NELLIS CONTROL
 317.525
 NELLIS DEP/APP EAST
 384.400
 BLACKJACK
 377.800



VMC ONLY

**PILOT RESPONSIBLE FOR
TERRAIN AVOIDANCE**

▼ APPROACH ROUTE DESCRIPTION

Depart ACTON between 8,000 and 10,000 MSL heading 196° direct APEX

OVERHEAD

Cross APEX at or above 4,500 feet MSL, then direct Initial.

Cross PHINN (LSV 027/5) at 4,000 feet MSL. Descend to 3,500 MSL for Initial.

VFR STRAIGHT IN RWY 21

Cross APEX at 4,000 feet MSL. Descend to be at 3,000 feet MSL at PHINN (LSV 027/5).

NOTE If unable to maintain VMC,
request IFR clearance for radar vectors to instrument approach.



INDIAN SPRINGS, NEVADA

TACAN INS Chan 87	APCH CRS 065°	Rwy ldg TDZE 3133	9002 3133 3113
----------------------	------------------	-------------------------	----------------------

INDIAN SPRINGS AF AUX (KINS)

▼ * MISSED APPROACH: Straight ahead to INS TACAN, intercept INS R-outbound, cross 17 DME at or above 9500, then direkt KSV TACAN 114

NELLIS CON

CREECH AFB TOWER
118.30 60.60

GND CON

NOT FOR CIVIL USE

FOR USE UNDER BASIC VFR
WEATHER MINIMUMS ONLY

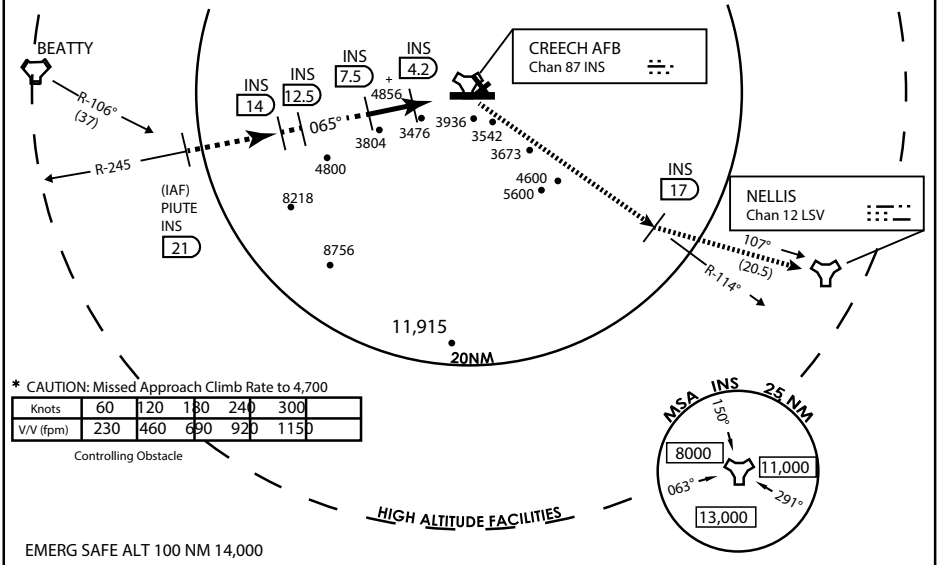
PILOT IS RESPONSIBLE FOR TERRAIN/OBSTACLE AVOIDANCE AND APPROPRIATE VFR CLOUD CLEARANCE FOR ALL

CAUTION: Descent gradients are greater than allowed under standard TERPS criteria and inbound course does not meet straight-in criteria

CAUTION: Final approach course crosses Runway centerline at MIDFIELD. Maneuvering left of course required prior to landing. Do not Maneuver farther north than the INS R- 258

Modified by viaBog 66 for use with DCS
NOT FOR REAL LIFE NAVIGATION

Modified by viaBog 66 for use with DCS
NOT FOR REAL LIFE NAVIGATION

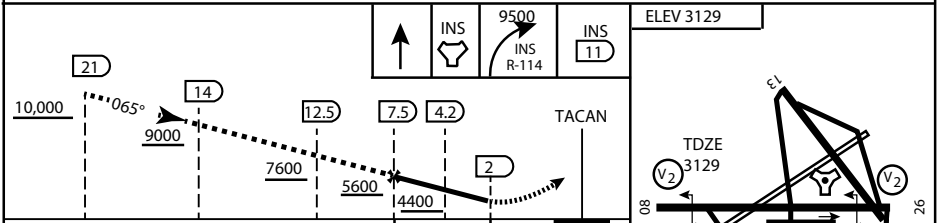


* CAUTION: Missed Approach Climb Rate to 4,700

Knots	60	120	180	240	300
V/V (fpm)	230	460	690	920	1150

Controlling Obstacle

EMERG SAFE ALT 100 NM 14,000



CATEGORY	A	B	C	D	E
S-8	3760-1 1/2	627 (700-1 1/2)	3760-1 3/4 627 (700-1 3/4)	3760-2 627 (700-2)	3760-2 1/4 627 (700-2 1/4)
CIRCLING	NOT AUTHORIZED				

MIRL Rwy 8-26

CITY OF INDIAN, NEVADA

INDIAN SPRINGS AF AUX (KINS)

(FOR DAY VFR USE ONLY)



AIRPORT DIAGRAM

476 VFG

CREECH AFB (KINS)
INDIAN SPRINGS, NEVADA

ATIS
 122.5
 CREECH TOWER
 118.4 360.7 38.65
 GND CON
 118.3 275.8
 CLNC DEL

115°42'W

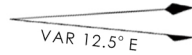
FIELD
 ELEV
 3127

80

972 X 150

HOT CARGO PAD

BAK-12


 VAR 12.5° E

WEST EOR

115°41'W

476 VFG JAN 2019

476 VFG JAN 2019

CONTROL TOWER
 BASE OPS

RPA LOLA WEST

RPA LOLA EAST

LOLA / HUNG ORDNANCE

199 X 100
 ELEV 3127
 RUNWAY 31/13
 MQ/RQ-1 ONLY

258.5°

860 X 100
 313.8°

4064 X 100
 133.8°

BAK-12

ELEV 3127

115°40'W

EAST EOR

1030 X 150

26

AIRPORT DIAGRAM

INDIAN SPRINGS, NEVADA
CREECH AFB (KINS)