

MISSION DATA CARD

OPORD		Callsign		Mission		Date/Time		
3328/2024		Rattler 1		Training		172000OCT24		
Task	Radar-Training					Freq		
AO	LATNG					133.5		
Departure				Recovery				
HELICOPTER DEP				HELICOPTER ARR				
#	Callsign		Pilot		IFF	TCN	LSR	NET
-1	Rattler 1-1		Hudson		4641	1Y	1251	
-2	Rattler 1-2		Laud		4642	64Y	1252	
-3	Rattler 1-3		Warblade		4643	64X	1253	

LOADOUT

A/A						GUN	25% HEDP
A/G	8xAGM114L					CHF	30
POD						FLR	60
TKS						FUEL	100%

TOLD

	Takeoff	Target	Joker	Bingo	Land
FUEL	2513				

AIRBASES

	Name	TCN	ATIS	GND	TWR	RWY	Elev	ILS
Dep	Nellis AFB	12X	270.1	275.8	327.0	21L	1850	109.1
Arr	Nellis AFB	12X	270.1	275.8	327.0	21L	1850	109.1
Div	Creech AFB	87X	290.45	275.8	360.6			

FLIGHTPLAN

#	Name	Navaid/Coords/DME	ALT	TOT
1	SOUTH GAP	LSV 160/2.9 (N36 11.94 W115 00.40)		
2	LATN Ground	N36 15.37 W114 36.43		

COMMS

Radio	Usage
1	133.5
2	327.0, 275.8, 377.8
3	35.35
4	30.00

OTHER FLIGHTS

Callsign	Mission	Airframe	Freq	TCN	Grpld	Laser
Tiger 1	Training	2x F/A-18C	261.15	1/64	1	155X
AO	R64 W	Task	GunPatern (NCR 11/15)			
Edelweiss 1	Training	2x F-16C	135.0	1/64		171X
AO	NTTR	Task	Departure / Recovery Training			
Raptor 1	Training	2x F-16C	134.0	1/64		161X
AO	Range 61	Task	LGB Body Training			
Raptor 3	Training	3x F-16C	134.5	1/64		163X
AO	Range 61	Task	LGB Body Training			
Monster 3	Training	4x A-10C	132.15	1/64	21	161X
AO	ELGIN	Task	PROF.-EXERCISES			
Nazgul 6	Training	1x F-15E	262.45	1/64		156X
AO	BVR-X	Task	BVR Training			
Edelweiss 6	Training	2x A-10C	134.65	1/64	40	166X
AO	SW Corner Texaco 3-1	Task	AAR + Formation Training			
Panther 1	Training	2x F/A-18C	261.35	1/64		157X
AO	BVR-Y	Task	BVR Training			

RADIO CHANNELS

#	Freq	Name
1		Flight/Squadron specific
2	289.4	Nellis Clearance Delivery
3	275.8	Nellis Ground
4	327.0	Nellis Tower
5	385.4	Nellis Approach/Departure West
6	273.55	Nellis Approach/Departure East
7	317.525	Nellis Control -- Sally
8	254.4	Nellis Control-- Lee
9	305.6	SOF Bullseye
10	343.725	EMERGENCY SINGLE FRQ
11	270.1	Nellis ATIS
12	360.625	Creech AFB Tower
13	250.1	HAVE QUICK 13
14	251.1	HAVE QUICK 14
15	252.1	HAVE QUICK 15
16	377.8	Blackjack
17	265.0	KC-135 AR-641A
18	360.8	KC-135MPRS AR-635
19	319.8	KC-135MPRS AR-625
20	300.05	KC-135 AR-231V

RAMROD

0	1	2	3	4	5	6	7	8	9
W	O	R	K	P	L	A	C	E	S

KTC 1400 C

	0	1	2	3	4	5	6	7	8	9
A	TRBI	POM	DJG	WY	UF	VSC	XH	EA	NK	LQ
B	LDMG	QCE	TBO	NV	HX	JRY	KA	UF	IP	SW
C	TYCD	AUV	IHX	WB	NR	GLO	SF	MQ	EK	JP
D	YFGS	PNR	KXA	WD	LC	UMQ	OV	BJ	TI	EH
E	DCSV	TMB	GPQ	HW	XN	JUA	EK	OI	YR	FL
F	GAJH	FTW	LMB	VP	CD	ISN	RK	EU	QX	YO
G	QEAN	KDB	ULC	VR	FJ	IPS	MH	YG	TW	OX
H	UANJ	BKW	GOR	TP	MQ	VHS	ID	FL	YC	EX
I	EWSJ	XUR	GBV	KI	DQ	MCL	AY	FO	PT	HN
J	NIYP	SXT	VOK	UE	MQ	LFJ	BR	GC	DH	AW
K	XLWV	THU	COS	QR	PA	BKI	DG	YE	JM	NF
L	NEFD	VKA	LGH	UQ	IO	JYT	BC	XM	PS	RW
M	FONK	QLU	EMW	JY	SR	VTP	CB	IX	DA	GH
N	NPJF	LET	KUA	DM	VC	SGH	RW	OY	XI	QB
O	CTWG	XJS	VDA	LM	KF	UOH	YP	IN	BR	QE
P	WKXH	NTI	OLC	ED	MB	FUP	QG	SA	VY	RJ
Q	VRCB	AYL	SIO	NT	WX	FHP	UD	JE	GM	QK
R	GIJH	PLF	CVD	ME	UW	YAS	BT	KN	RQ	XO
S	PMNK	BDR	GSJ	HY	TQ	AWO	VE	CL	FI	XU
T	LECW	RTB	FNK	SY	MU	VIO	DP	JG	QX	AH
U	BAYN	RSQ	IUV	HD	LM	PGK	XE	WF	CT	OJ
V	DAMV	OHU	CBJ	WE	KF	GLQ	XP	IS	YT	RN
W	GSTH	XBR	QEM	JO	FU	KID	LW	CP	YV	NA
X	SPCX	GRB	UEF	YO	DQ	MIN	WT	JA	HV	KL
Y	TYJM	KDB	SHP	NL	UF	WCE	GQ	RO	VA	IX

NAVAIDS

Id	Name	Channel	Position	Elevation
BCE	Bryce Canyon	75	N3741.35 W11218.23	9040
BIH	Bishop	33	N3722.62 W11821.99	4114
BLD	Boulder	114	N3559.75 W11451.82	3650
BTY	Beatty	94	N3648.54 W11644.86	2925
CDC	Cedar City	120	N3747.24 W11304.90	5463
DAG	Daggett	79	N3457.75 W11634.69	1760
EED	Needles	99	N3445.96 W11428.43	650
GFS	Goffs	91	N3507.87 W11510.59	4019
GRL	Groom Lake	18	N3713.91 W11548.16	4475
HEC	Hector	74	N3447.83 W11627.78	1854
ILC	Wilson Creek	110	N3815.02 W11423.65	9318
INS	Creech AFB	87	N3635.20 W11540.12	3101
LAS	McCarran Intl	116	N3604.78 W11509.59	2142
LSV	Nellis	12	N3614.68 W11501.50	1864
MLF	Milford	58	N3821.62 W11300.79	4977
MMM	Mormon Mesa	90	N3646.16 W11416.65	2120
MVA	Mina	98	N3833.92 W11801.97	7860
OAL	Coale Dale	124	N3800.20 W11746.23	4800
PGS	Peach Springs	57	N3537.48 W11332.67	4754
TPH	Tonopah Muni	119	N3801.84 W11702.01	5330
TQQ	Silverbow	77	N3748.00 W11647.00	5500
UTI	St George	23	N3705.29 W11335.53	2871



RWY 3L-21R
 PCN 46 R/C/W/T
 RWY 3R-21L
 PCN 51 R/C/W/T
 2017

PAR	RWY	CAT	MINIMA		ARP	ELEV	Scale 1:35'500	
	21L	A B D E	2057 - 0.8 200 (200-0.8/1.6)	GS 3°	36° 14.060° N 115° 01.058° W	1857 [ft] 566 [m]	0 300 600 900 1200 1500 [m]	
	3R	A B D E	2057 - 0.8 200 (200-0.8/1.6)	GS 3°			0 1000 2000 3000 4000 5000 [ft]	
SRA	21R	A C D E	2257 - 1.2 350 (350-1.2/1.6)					
	3L	A C D E	2257 - 1.2 350 (350-1.2/1.6)					

RWY	TORA	TODA	ASDA	LDA	PSN	THR	ALS
21L	10051 [ft] 3063 [m]	11051 [ft] 3368 [m]	11051 [ft] 3368 [m]	10051 [ft] 3063 [m]	36°14.043' N	115°01.018' W	⊕
3R	10120 [ft] 3084 [m]	11120 [ft] 3398 [m]	11120 [ft] 3398 [m]	10120 [ft] 3084 [m]	36°13.029' N	115°02.038' W	

ATIS	NELLIS GROUND	NELLIS TOWER	NELLIS CONTROL	TACAN	ILS RWY 21L	NELLIS EAST	NELLIS WEST
270.100 MHz	275.800 121.800	327.000 132.55	317.525	LSV 12X	109.10 Mhz	384.400	385.000

HELICOPTER ARR/DEP VAD-CHART | VALID 2014

NELLIS AFB (KLSV)
LAS VEGAS, NEVADA

ATIS
270.100
NELLIS GROUND
275.800
NELLIS TOWER
327.000
BLACKJACK
377.800

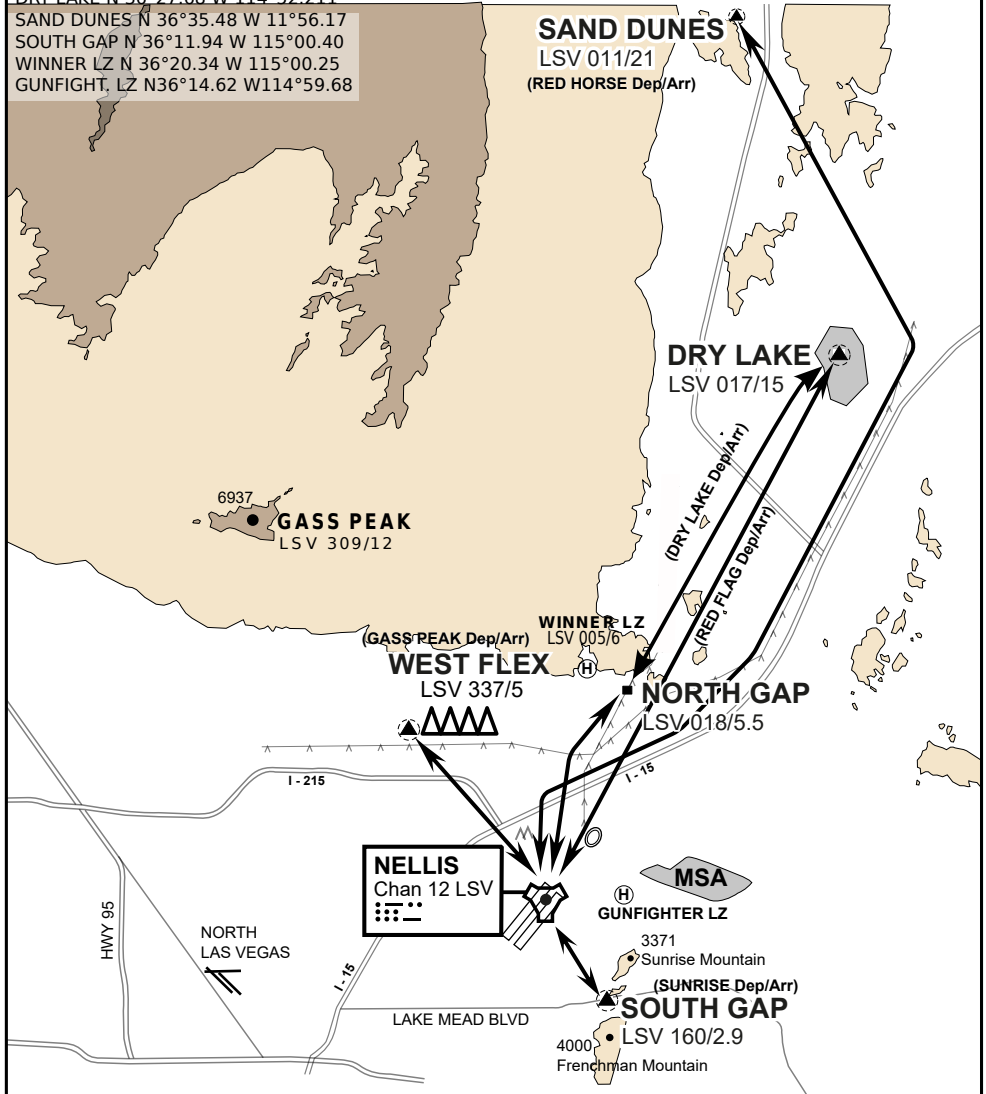
CAUTION: If unable to comply
with restrictions advise ATC
prior to departure.

VMC ONLY

if below WX Minima request SVFR



JOLLY PAD N 36°15.08 W 115°01.65
WEST FLEX N 36°18.64 W 115°08.00
NORTH GAP N 36°20.00 W 114°59.30
DRY LAKE N 36°27.68 W 114°52.211
SAND DUNES N 36°35.48 W 11°56.17
SOUTH GAP N 36°11.94 W 115°00.40
WINNER LZ N 36°20.34 W 115°00.25
GUNFIGHT, LZ N36°14.62 W114°59.68



HELICOPTER ARRIVAL AND DEPARTURES ROUTES

v.110 22APR20

HELICOPTER ARR/DEP VAD-CHART | VALID 2014

NELLIS AFB (KLSV)
LAS VEGAS, NEVADA

ATIS
270.100
NELLIS GROUND
275.800
NELLIS TOWER
327.000
BLACKJACK
377.800

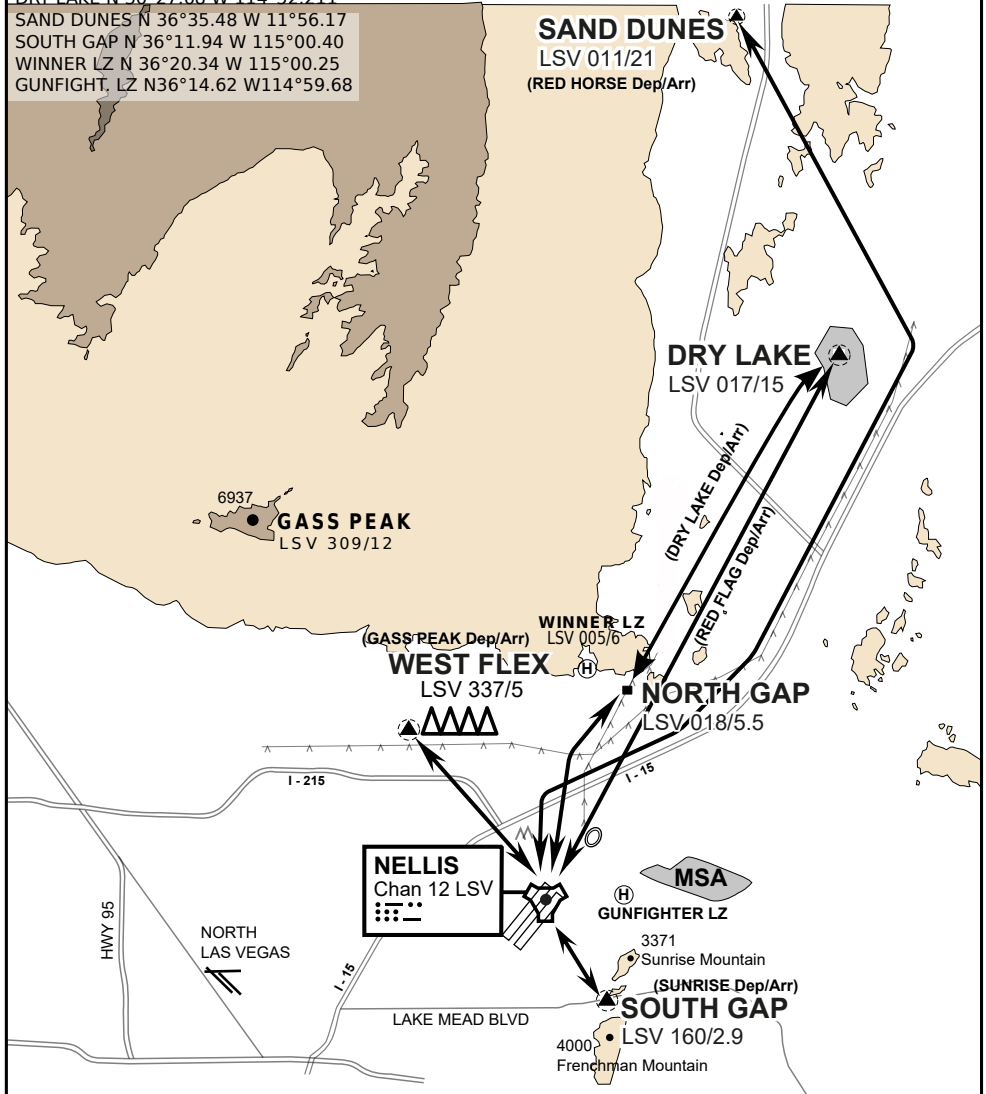
CAUTION: If unable to comply
with restrictions advise ATC
prior to departure.

VMC ONLY

if below WX Minima request SVFR



JOLLY PAD N 36°15.08 W 115°01.65
WEST FLEX N 36°18.64 W 115°08.00
NORTH GAP N 36°20.00 W 114°59.30
DRY LAKE N 36°27.68 W 114°52.211
SAND DUNES N 36°35.48 W 11°56.17
SOUTH GAP N 36°11.94 W 115°00.40
WINNER LZ N 36°20.34 W 115°00.25
GUNFIGHT, LZ N36°14.62 W114°59.68



vJABeG32NTRR NAV CHART

HELICOPTER ARRIVAL AND DEPARTURES ROUTES

v.110 22APR20



INDIAN SPRINGS, NEVADA

TACAN INS Chan 87	APCH CRS 065°	Rwy Idg 9002
		TDZE 3133
		Arpt Elev 3113

INDIAN SPRINGS AF AUX (KINS)

NOT FOR CIVIL USE

* MISSED APPROACH: Straight ahead to INS TACAN, intercept INS R-outbound, cross 17 DME at or above 9500, then direkt KSV TACAN

114

NELLIS CON

CREECH AFB TOWER
118.30 60.60

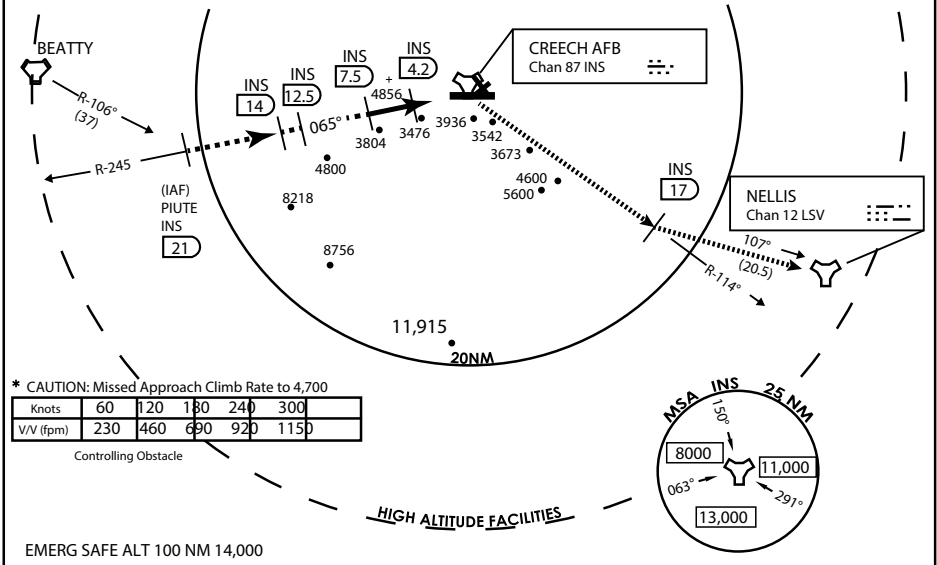
GND CON

FOR USE UNDER BASIC VFR WEATHER MINIMUMS ONLY

CAUTION: Descent gradients are greater than allowed under standard TERPS criteria and inbound course does not meet straight-in criteria

CAUTION: Final approach course crosses Runway centerline at MIDFIELD. Maneuvering left of course required prior to landing. Do not Maneuver farther north than the INS R- 258

PILOT IS RESPONSIBLE FOR TERRAIN/OBSTACLE AVOIDANCE AND APPROPRIATE VFR CLOUD CLEARANCE FOR ALL



* CAUTION: Missed Approach Climb Rate to 4,700

Knots	60	120	180	240	300
V/V (fpm)	230	460	690	920	1150

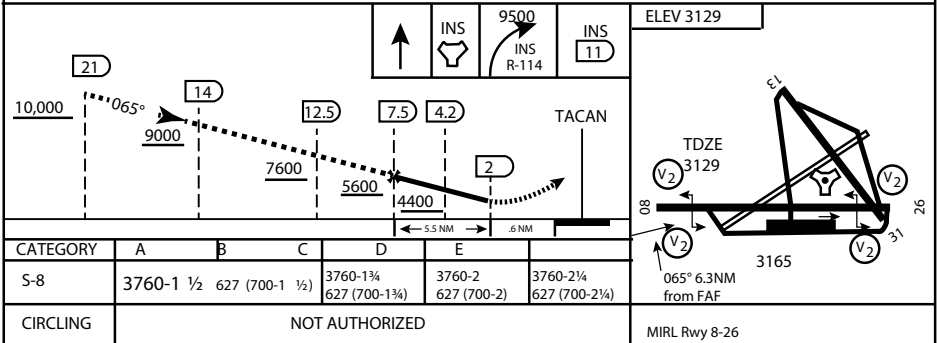
Controlling Obstacle

HIGH ALTITUDE FACILITIES

EMERG SAFE ALT 100 NM 14,000

Modified by viaBog 66 for use with DCS
NOT FOR REAL LIFE NAVIGATION

Modified by viaBog 66 for use with DCS
NOT FOR REAL LIFE NAVIGATION



CATEGORY	A	B	C	D	E
S-8	3760-1 1/2	627 (700-1 1/2)	3760-1 3/4 627 (700-1 3/4)	3760-2 627 (700-2)	3760-2 1/4 627 (700-2 1/4)
CIRCLING	NOT AUTHORIZED				

MIRL Rwy 8-26

CITY OF INDIAN, NEVADA

INDIAN SPRINGS AF AUX (KINS)

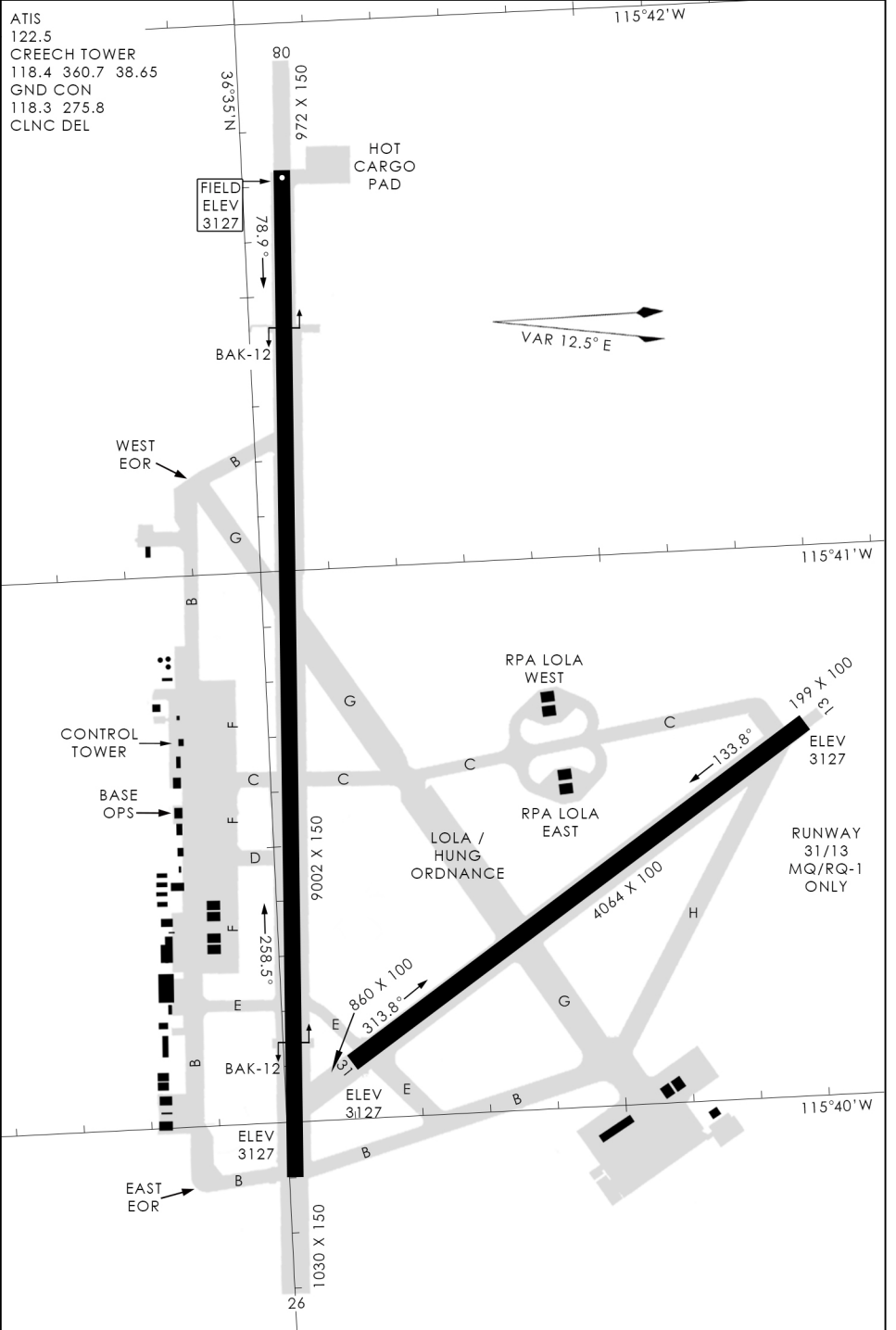
(FOR DAY VFR USE ONLY)



AIRPORT DIAGRAM

476 VFG

CREECH AFB (KINS)
INDIAN SPRINGS, NEVADA



476 VFG JAN 2019

476 VFG JAN 2019

AIRPORT DIAGRAM

INDIAN SPRINGS, NEVADA
CREECH AFB (KINS)