

MISSION DATA CARD

OPORD		Callsign		Mission		Date/Time		
3319/2024		Raptor 3		Training		142000OCT24		
Task	LGB Training					Freq		
AO	Range 61					134.0		
Departure				Recovery				
DREAM FOUR				STRYK				
#	Callsign		Pilot		IFF	TCN	LSR	NET
-1	Raptor 3-1		Cyking		1611	1Y	1621	

LOADOUT

A/A	2xA120C, 2xA9X				GUN	100% HEI-T	
A/G	2xG12				CHF	60	
POD	HTS, A184, TGP				FLR	60	
TKS	2xFT300				FUEL	100%	

TOLD

	Takeoff	Target	Joker	Bingo	Land
FUEL	11169			3000	

AIRBASES

	Name	TCN	ATIS	GND	TWR	RWY	Elev	ILS
Dep	Nellis AFB	12X	270.1	275.8	327.0	21L	1850	109.1
Arr	Nellis AFB	12X	270.1	275.8	327.0	21L	1850	109.1
Div	Creech AFB	87X	290.45	275.8	360.6			

FLIGHTPLAN

#	Name	Navaid/Coords/DME	ALT	TOT
1	DREAM	N37 10 20.400 W114 59 31.800	15000	
2	HOLD	N37 22 43.501 W115 09 33.506	15000	
3	IP	N37 22 34.126 W115 20 12.896	15000	
4	TRGT	N37 11 35.794 W115 24 48.127	15000	
5	SARAH	N36 36 27 W115 18 01.800	15000	
6	GASS PEAK	N36 24 08.400 W115 10 39.600	9000	
7	SIMNS	N36 17 20.400 W115 10 45	5000	
8	CRAIG	N36 15 15 W115 08 16.200	5000	
9	Nellis AFB	N36 13 32 W115 02 37	1800	

COMMS

Radio	Usage
1	11/3/4/16/11/4/3

NOTES

Dep: Dream 4 -> Dreams

AAR -> Pegasus

HOLDING und Target Aufklärung

Anflug auf Ziel immer als 2Ship, Shooter / Cover

Recov: ISL Z RWY 21

SUPPORT**Tanker**

Callsign	TCN	Freq	ALT	TAS
TEXACO 2	95Y	289.7	FL220	420
Pos	Pegasus.1: CDC 166/102 (N3730 W11440)			

OTHER FLIGHTS

Callsign	Mission	Airframe	Freq	TCN	Grpld	Laser
Edelweiss 1	Training	4x F/A-18C	264.05	1/64		170X
AO		Task	Formation Training			
Monster 1	Training	4x A-10C	132.15	1/64	21	161X
AO	LATN Central	Task	MSC Training			
Edelweiss 2	Training	2x F-16C	135.0	1/64		171X
AO	NTTR	Task	Departure / Recovery Training			
Raptor 1	Training	2x F-16C	134.0	1/64		162X
AO	Range 61	Task	LGB Training			
Nazgul 6	Training	4x F-15E	262.45	1/64		156X
AO	BFM Range	Task	WVR			
Rattler 4	Training	4x AH-64D	133.5	1/64		125X
AO	LATNG	Task	Radar-Training			
Raptor 2	Training	3x F-16C	134.5	1/64		163X
AO	Range 61	Task	LGB Training			
Edelweiss 6	Training	2x A-10C	132.25	1/64	25	172X
AO	Nellis	Task	AAR			
Edelweiss 3	Training	1x F/A-18C	264.35	1/64		173X
AO		Task				

RADIO CHANNELS

#	Freq	Name
1		Flight/Squadron specific
2	289.4	Nellis Clearance Delivery
3	275.8	Nellis Ground
4	327.0	Nellis Tower
5	385.4	Nellis Approach/Departure West
6	273.55	Nellis Approach/Departure East
7	317.525	Nellis Control -- Sally
8	254.4	Nellis Control-- Lee
9	305.6	SOF Bullseye
10	343.725	EMERGENCY SINGLE FRQ
11	270.1	Nellis ATIS
12	360.625	Creech AFB Tower
13	250.1	HAVE QUICK 13
14	251.1	HAVE QUICK 14
15	252.1	HAVE QUICK 15
16	377.8	Blackjack
17	265.0	KC-135 AR-641A
18	360.8	KC-135MPRS AR-635
19	319.8	KC-135MPRS AR-625
20	300.05	KC-135 AR-231V

RAMROD

0	1	2	3	4	5	6	7	8	9
P	A	D	L	O	C	K	I	N	G

KTC 1400 C

	0	1	2	3	4	5	6	7	8	9
A	JDVU	IHE	PNA	QO	TY	CWS	RF	KM	LG	BX
B	IYAE	MUH	SGO	TV	WP	QCB	JR	NF	XD	KL
C	SGEA	TCN	IFX	PH	VO	BDM	WL	KQ	YR	UJ
D	TGJB	HWI	XQU	YL	PV	ROE	MF	AD	CN	SK
E	DNLW	QRB	FCG	SE	HO	YJX	VK	MU	PT	AI
F	ECLO	IGY	FJN	VS	DT	XWQ	PA	MB	RU	KH
G	IRSU	OGP	VKW	NH	TE	JMQ	BD	XL	CY	FA
H	PFGO	EDB	AJK	UY	VR	NSQ	HL	MI	WC	TX
I	RXFM	NBE	QSJ	PT	IG	COA	KV	DU	YH	WL
J	PIGW	HMF	SOU	NA	RX	QVD	BC	EJ	KL	TY
K	DASI	OYT	JMN	ER	PW	GKQ	FC	LX	VH	BU
L	JIOU	WVB	XQR	DN	SA	LGP	CK	FH	EM	TY
M	LSIM	XPQ	DHY	BE	WJ	CNV	UT	OF	GR	AK
N	VAGQ	NBT	OEW	FL	UK	XCR	PH	YD	IJ	MS
O	QXFB	UYA	EDC	LW	NK	GRM	TP	OH	IJ	SV
P	EGMU	SPJ	TWQ	AN	YV	IDH	KR	BL	CO	FX
Q	MNEJ	YVX	SWA	PL	GK	QIB	RF	HT	DU	OC
R	DERB	OKI	JGY	CX	WV	PAN	SH	LM	TU	FQ
S	LRBK	CXY	MTJ	IQ	HW	NDE	VS	OP	UG	AF
T	MUOB	YHL	WIR	NE	CJ	VSQ	PK	FA	DG	TX
U	GVTK	AYD	FLJ	HQ	XR	SBO	NE	WM	PU	CI
V	GXSU	DTY	QVP	BO	AI	WLK	CR	EN	MJ	HF
W	USTG	PNI	HJW	RA	CQ	YBM	VE	OX	FK	DL
X	PUIN	REJ	TBA	YG	FD	KMQ	SW	CL	HO	XV
Y	IHAE	OKM	CYS	DT	WX	QLF	VG	PR	NJ	UB

NAVAIDS

Id	Name	Channel	Position	Elevation
BCE	Bryce Canyon	75	N3741.35 W11218.23	9040
BIH	Bishop	33	N3722.62 W11821.99	4114
BLD	Boulder	114	N3559.75 W11451.82	3650
BTY	Beatty	94	N3648.54 W11644.86	2925
CDC	Cedar City	120	N3747.24 W11304.90	5463
DAG	Daggett	79	N3457.75 W11634.69	1760
EED	Needles	99	N3445.96 W11428.43	650
GFS	Goffs	91	N3507.87 W11510.59	4019
GRL	Groom Lake	18	N3713.91 W11548.16	4475
HEC	Hector	74	N3447.83 W11627.78	1854
ILC	Wilson Creek	110	N3815.02 W11423.65	9318
INS	Creech AFB	87	N3635.20 W11540.12	3101
LAS	McCarran Intl	116	N3604.78 W11509.59	2142
LSV	Nellis	12	N3614.68 W11501.50	1864
MLF	Milford	58	N3821.62 W11300.79	4977
MMM	Mormon Mesa	90	N3646.16 W11416.65	2120
MVA	Mina	98	N3833.92 W11801.97	7860
OAL	Coale Dale	124	N3800.20 W11746.23	4800
PGS	Peach Springs	57	N3537.48 W11332.67	4754
TPH	Tonopah Muni	119	N3801.84 W11702.01	5330
TQQ	Silverbow	77	N3748.00 W11647.00	5500
UTI	St George	23	N3705.29 W11335.53	2871



PAR	RWY	CAT	MINIMA	ARP	ELEV	Scale 1:35'500
	21L	A B D E	2057 - 0.8 200 (200-0.8/1.6) GS 3°	36° 14.060° N 115° 01.058° W	1857 [ft] 566 [m]	0 300 600 900 1200 1500 [m]
	3R	A B D E	2057 - 0.8 200 (200-0.8/1.6) GS 3°			0 1000 2000 3000 4000 5000 [ft]
SRA	21R	A C D E	2257 - 1.2 350 (350-1.2/1.6)			
	3L	A C D E	2257 - 1.2 350 (350-1.2/1.6)			

RWY	TORA	TODA	ASDA	LDA	PSN	THR	ALS
21L	10051 [ft] 3063 [m]	11051 [ft] 3368 [m]	11051 [ft] 3368 [m]	10051 [ft] 3063 [m]	36°14.043' N	115°01.018' W	⊕
3R	10120 [ft] 3084 [m]	11120 [ft] 3398 [m]	11120 [ft] 3398 [m]	10120 [ft] 3084 [m]	36°13.029' N	115°02.038' W	

ATIS	NELLIS GROUND	NELLIS TOWER	NELLIS CONTROL	TACAN	ILS RWY 21L	NELLIS EAST	NELLIS WEST
270.100 MHz	275.800 121.800	327.000 132.55	317.525	LSV 12X	109.10 Mhz	384.400	385.000

DREAM FOUR DEPARTURE DREAM4 | VALID 2014

NELLIS AFB (KLSV)
LAS VEGAS, NEVADA

ATIS
270.100
NELLIS GROUND
275.800
NELLIS TOWER
327.000
NELLIS CONTROL
317.525
NELLIS DEP/APP EAST
384.400
BLACKJACK
377.800

DREAM
N3710.34
W11459.53

MINTT
LAS 351/38
17,000

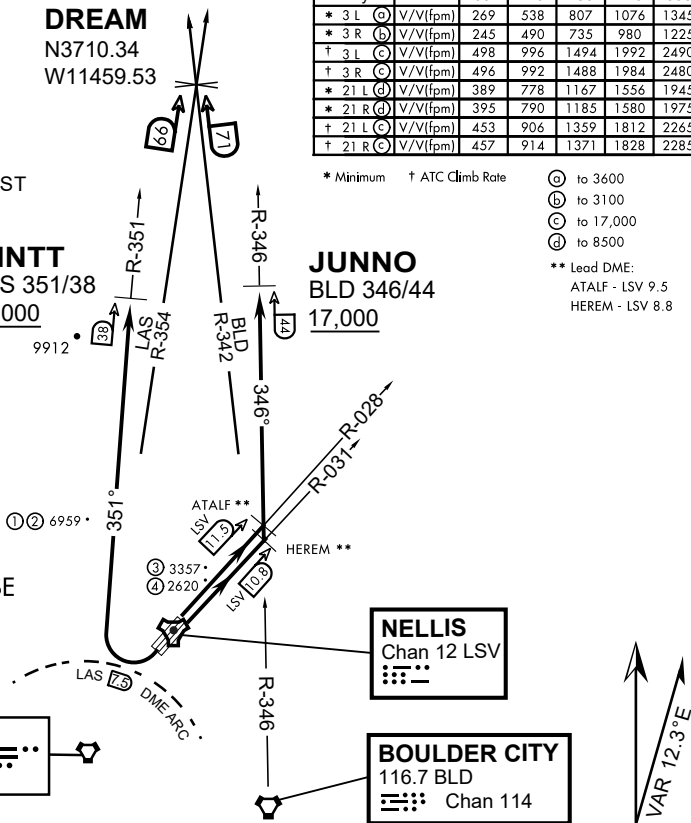
JUNNO
BLD 346/44
17,000

Rwy	Knots	60	120	180	240	300	360
* 3 L (A)	V/V(fpm)	269	538	807	1076	1345	1614
* 3 R (B)	V/V(fpm)	245	490	735	980	1225	1470
† 3 L (C)	V/V(fpm)	498	996	1494	1992	2490	2988
† 3 R (C)	V/V(fpm)	496	992	1488	1984	2480	2976
* 21 L (D)	V/V(fpm)	389	778	1167	1556	1945	2334
* 21 R (D)	V/V(fpm)	395	790	1185	1580	1975	2370
† 21 L (C)	V/V(fpm)	453	906	1359	1812	2265	2718
† 21 R (C)	V/V(fpm)	457	914	1371	1828	2285	2742

* Minimum † ATC Climb Rate

- (A) to 3600
 - (B) to 3100
 - (C) to 17,000
 - (D) to 8500
- ** Lead DME:
ATALF - LSV 9.5
HEREM - LSV 8.8

- ① 12.24 NM from Rwy 21R
- ② 12.40 NM from Rwy 21L
- ③ 5.67 NM from Rwy 3L
- ④ 5.85 NM from Rwy 3R



NOT FOR CIVIL USE

CAUTION: If unable to comply with restrictions advise ATC prior to departure.

DEPARTURE ROUTE DESCRIPTION

TAKE-OFF RWY 3L

- Fly runway heading to intercept the LSV TACAN R-028 then direct ATALF, intercept the BLD VORTAC R-346 then direct JUNNO, cross JUNNO at or above 17,000, then via assigned route.

TAKE-OFF RWY 3R

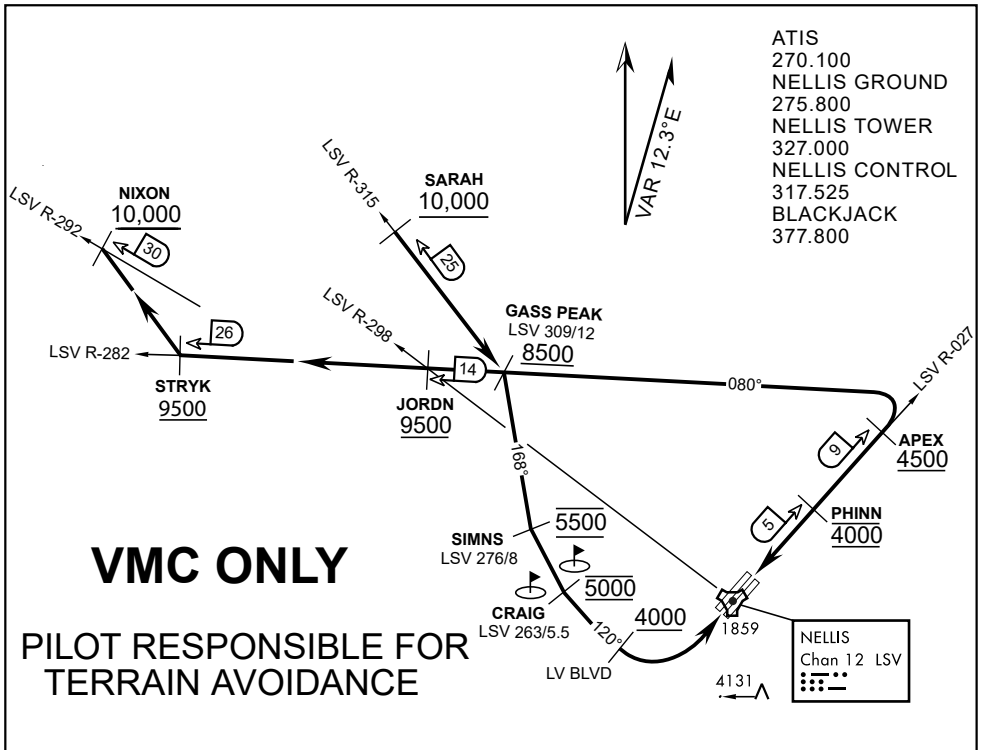
- Fly runway heading to intercept the LSV TACAN R-031 then direct HEREM, intercept the BLD VORTAC R-346 then direct JUNNO, cross JUNNO at or above 17,000, then via assigned route.

TAKE-OFF RWY 21L/R

- Turn right to intercept LAS VORTAC R-351 outbound. Remain North of LAS 7.5 DME turning Northbound. Intercept LAS R-351 between 5000 and 6000, do not proceed West of LAS R-351. Cross MINTT at or above 17,000, then via assigned route.

NOISE ABATMENT PROCEDURES: Fly acc. Nellis Noise Abatement instructions

DREAM FOUR DEPARTURE (DREAM4 • DREAM)



ATIS
 270.100
 NELLIS GROUND
 275.800
 NELLIS TOWER
 327.000
 NELLIS CONTROL
 317.525
 BLACKJACK
 377.800

VMC ONLY

PILOT RESPONSIBLE FOR TERRAIN AVOIDANCE

APPROACH ROUTE DESCRIPTION

APPROACH RWY 3L/R

Cross STRYK at or above 9,500' MSL, proceed direct GASS PEAK. Cross JORDN at or above 9,500' MSL, cross GASS PEAK at or above 8,500' MSL. Proceed direct SIMNS and cross at 5,500' MSL. Cross Las Vegas Blvd at or above 4,000' MSL then to 3,500' MSL for Initial. Remain within 4 DME if LSV on turn to final.

VFR STRAIGHT-IN RWY 3L/R

Depart CRAIG & descend to be at 3,000' MSL by Las Vegas Blvd. Do not descend below 3,000' MSL until within 5 DME of LSV or 4 NM of the runway on turn to final.

APPROACH RWY 21L/R

Cross STRYK at or above 9,500' MSL, proceed direct GASS PEAK. Cross JORDN at or above 9,500' MSL, cross GASS PEAK at or above 8,500' MSL. Cross APEX at or above 4,500' MSL then direct 5NM initial. Descend to cross PHINN at 4,000' MSL, Inside 5 NM descend to 3,500' MSL.

VFR STRAIGHT-IN RWY 21L/R

Cross APEX at 4,000' MSL. Descend to be at 3,000' MSL at PHINN. Descend to 3,000' MSL at LSV 027/5.

RANGE 63B EXIT

SOUTH: Via NIXON at or above 10,000' MSL, then direct STRYK.
EAST: Via SARAH at or above 10,000' MSL, then direct GASS PEAK.



INDIAN SPRINGS, NEVADA

TACAN INS Chan 87	APCH CRS 065°	Rwy ldg TDZE 3133	9002 3113
		Arpt Elev 3113	

INDIAN SPRINGS AF AUX (KINS)

▼ * MISSED APPROACH: Straight ahead to INS TACAN, intercept INS R-outbound, cross 17 DME at or above 9500, then direkt KSV TACAN 114

NELLIS CON

CREECH AFB TOWER
118.30 60.60

GND CON

NOT FOR CIVIL USE

FOR USE UNDER BASIC VFR
WEATHER MINIMUMS ONLY

PILOT IS RESPONSIBLE FOR TERRAIN/OBSTACLE AVOIDANCE AND APPROPRIATE VFR CLOUD CLEARANCE FOR ALL

CAUTION: Descent gradients are greater than allowed under standard TERPS criteria and inbound course does not meet straight-in criteria

CAUTION: Final approach course crosses Runway centerline at MIDFIELD. Maneuvering left of course required prior to landing. Do not Maneuver farther north than the INS R- 258

Modified by viaBog 66 for use with DCS
NOT FOR REAL LIFE NAVIGATION

Modified by viaBog 66 for use with DCS
NOT FOR REAL LIFE NAVIGATION

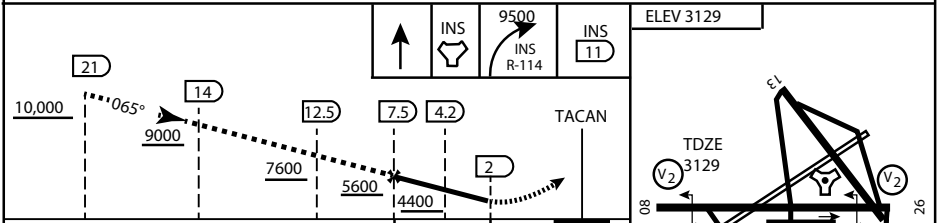


* CAUTION: Missed Approach Climb Rate to 4,700

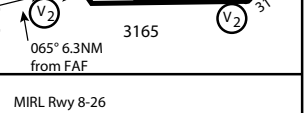
Knots	60	120	180	240	300
V/V (fpm)	230	460	690	920	1150

Controlling Obstacle

EMERG SAFE ALT 100 NM 14,000



CATEGORY	A	B	C	D	E
S-8	3760-1 1/2	627 (700-1 1/2)	3760-1 3/4 627 (700-1 3/4)	3760-2 627 (700-2)	3760-2 1/4 627 (700-2 1/4)
CIRCLING	NOT AUTHORIZED				



CITY OF INDIAN, NEVADA

INDIAN SPRINGS AF AUX (KINS)

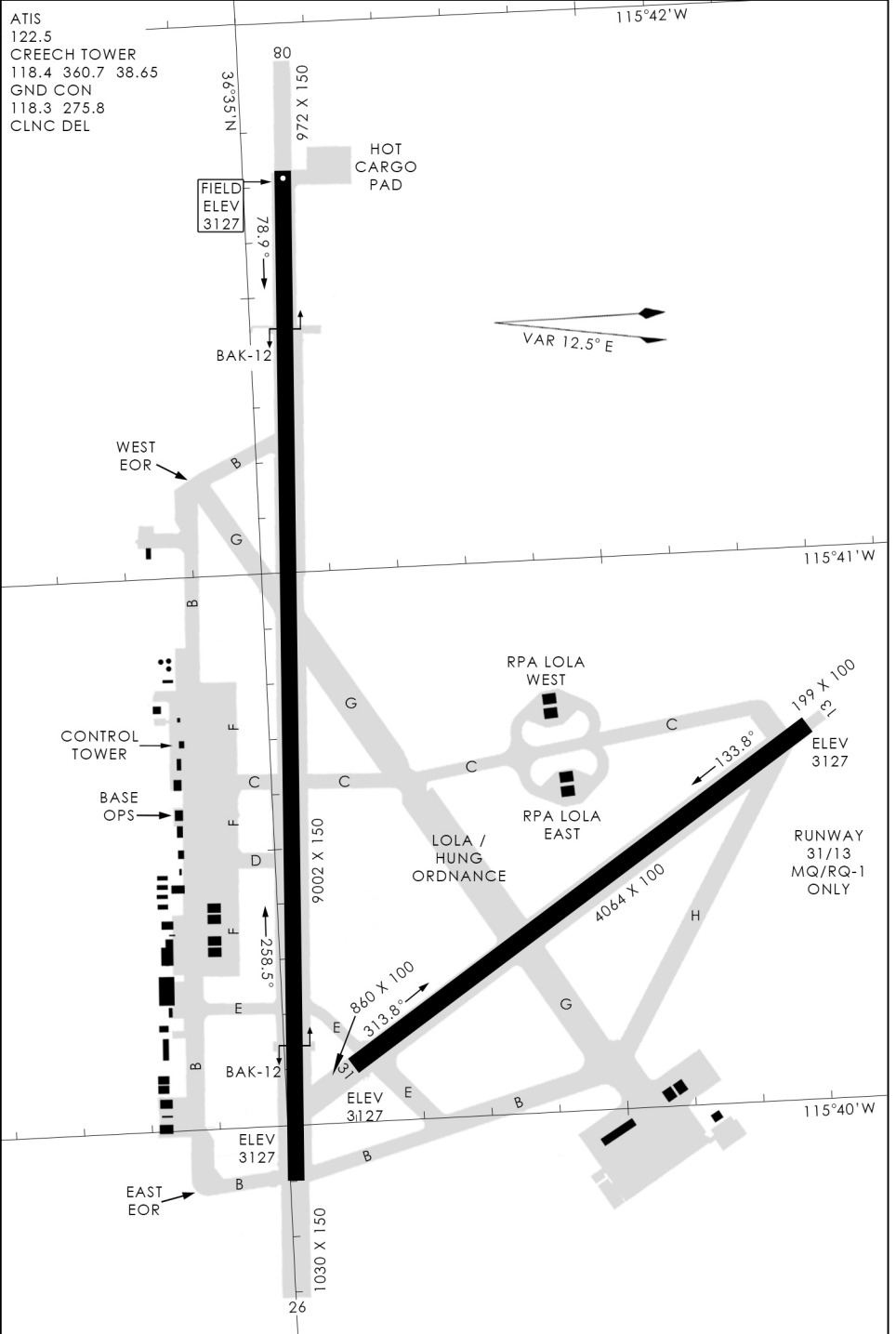
(FOR DAY VFR USE ONLY)



AIRPORT DIAGRAM

476 VFG

CREECH AFB (KINS)
INDIAN SPRINGS, NEVADA



476 VFG JAN 2019

476 VFG JAN 2019

AIRPORT DIAGRAM

INDIAN SPRINGS, NEVADA
CREECH AFB (KINS)