

MISSION DATA CARD

OPORD		Callsign		Mission		Date/Time		
3316/2024		Rattler 4		Training		142000OCT24		
Task	Radar-Training					Freq		
AO	LATNG					133.5		
Departure				Recovery				
HELICOPTER DEP				HELICOPTER ARR				
#	Callsign		Pilot		IFF	TCN	LSR	NET
-1	Rattler 4-1		Hudson		4641	1Y	1251	
-2	Rattler 4-2		Laud		4642	64Y	1252	
-3	Rattler 4-3		Warblade		4643	64X	1253	

LOADOUT

A/A						GUN	25% HEDP
A/G	8xAGM114L					CHF	30
POD						FLR	60
TKS						FUEL	100%

TOLD

	Takeoff	Target	Joker	Bingo	Land
FUEL	2513				

AIRBASES

	Name	TCN	ATIS	GND	TWR	RWY	Elev	ILS
Dep	Nellis AFB	12X	270.1	275.8	327.0	21L	1850	109.1
Arr	Nellis AFB	12X	270.1	275.8	327.0	21L	1850	109.1
Div	Creech AFB	87X	290.45	275.8	360.6			

COMMS

Radio	Usage
1	133.5
2	327.0, 275.8, 377.8
3	35.35
4	30.00

OTHER FLIGHTS

Callsign	Mission	Airframe	Freq	TCN	Grpld	Laser
Edelweiss 1	Training	4x F/A-18C	264.05	1/64		170X
AO		Task	Formation Training			
Monster 1	Training	4x A-10C	132.15	1/64	21	161X
AO	LATN Central	Task	MSC Training			
Edelweiss 2	Training	2x F-16C	135.0	1/64		171X
AO	NTTR	Task	Departure / Recovery Training			
Raptor 1	Training	2x F-16C	134.0	1/64		162X
AO	Range 61	Task	LGB Training			
Nazgul 6	Training	4x F-15E	262.45	1/64		156X
AO	BFM Range	Task	WVR			
Raptor 2	Training	3x F-16C	134.5	1/64		163X
AO	Range 61	Task	LGB Training			
Edelweiss 6	Training	2x A-10C	132.25	1/64	25	172X
AO	Nellis	Task	AAR			
Raptor 3	Training	2x F-16C	134.0	1/64		162X
AO	Range 61	Task	LGB Training			
Edelweiss 3	Training	1x F/A-18C	264.35	1/64		173X
AO		Task				

RADIO CHANNELS

#	Freq	Name
1		Flight/Squadron specific
2	289.4	Nellis Clearance Delivery
3	275.8	Nellis Ground
4	327.0	Nellis Tower
5	385.4	Nellis Approach/Departure West
6	273.55	Nellis Approach/Departure East
7	317.525	Nellis Control -- Sally
8	254.4	Nellis Control-- Lee
9	305.6	SOF Bullseye
10	343.725	EMERGENCY SINGLE FRQ
11	270.1	Nellis ATIS
12	360.625	Creech AFB Tower
13	250.1	HAVE QUICK 13
14	251.1	HAVE QUICK 14
15	252.1	HAVE QUICK 15
16	377.8	Blackjack
17	265.0	KC-135 AR-641A
18	360.8	KC-135MPRS AR-635
19	319.8	KC-135MPRS AR-625
20	300.05	KC-135 AR-231V

RAMROD

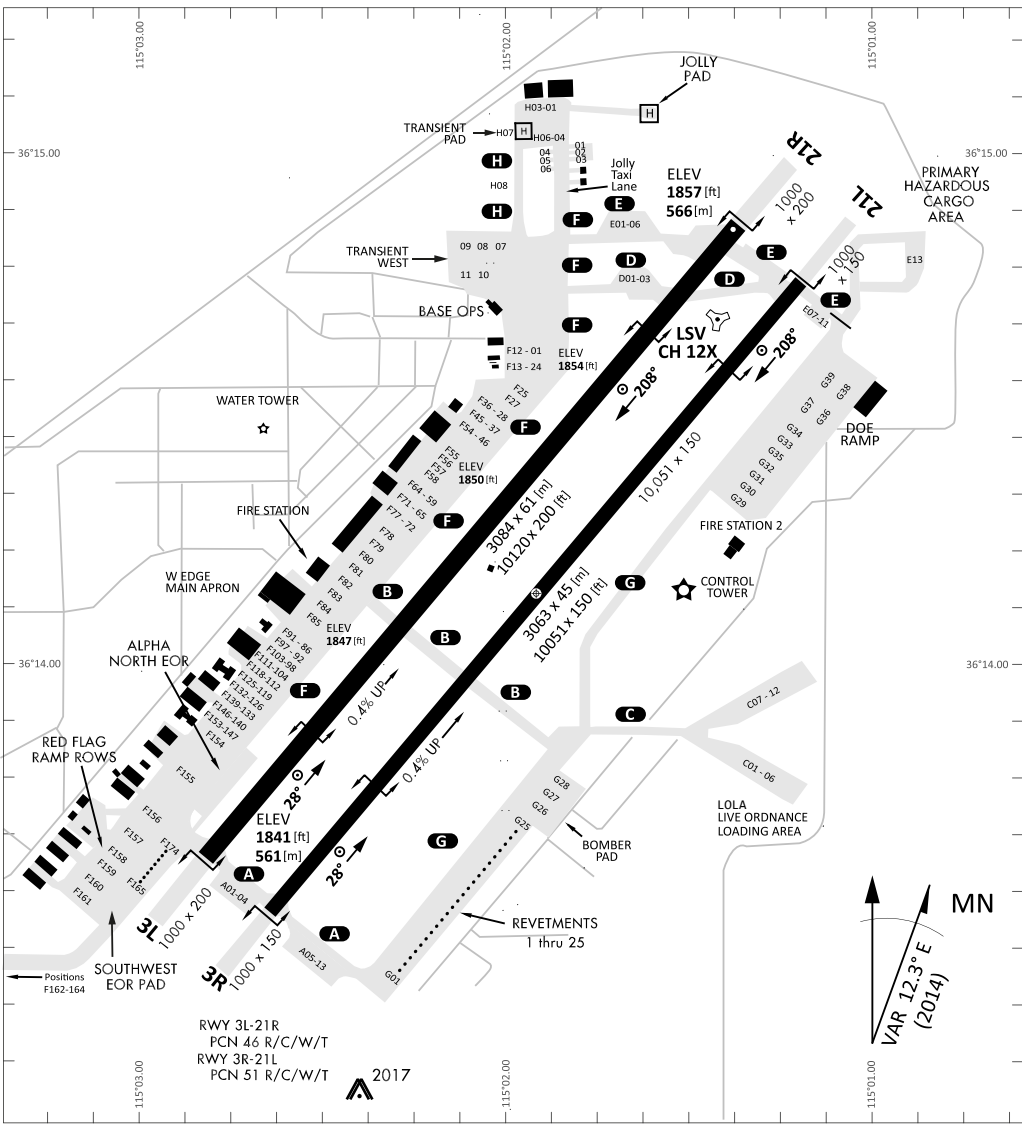
0	1	2	3	4	5	6	7	8	9
P	A	D	L	O	C	K	I	N	G

KTC 1400 C

	0	1	2	3	4	5	6	7	8	9
A	JDVU	IHE	PNA	QO	TY	CWS	RF	KM	LG	BX
B	IYAE	MUH	SGO	TV	WP	QCB	JR	NF	XD	KL
C	SGEA	TCN	IFX	PH	VO	BDM	WL	KQ	YR	UJ
D	TGJB	HWI	XQU	YL	PV	ROE	MF	AD	CN	SK
E	DNLW	QRB	FCG	SE	HO	YJX	VK	MU	PT	AI
F	ECLO	IGY	FJN	VS	DT	XWQ	PA	MB	RU	KH
G	IRSU	OGP	VKW	NH	TE	JMQ	BD	XL	CY	FA
H	PFGO	EDB	AJK	UY	VR	NSQ	HL	MI	WC	TX
I	RXFM	NBE	QSJ	PT	IG	COA	KV	DU	YH	WL
J	PIGW	HMF	SOU	NA	RX	QVD	BC	EJ	KL	TY
K	DASI	OYT	JMN	ER	PW	GKQ	FC	LX	VH	BU
L	JIOU	WVB	XQR	DN	SA	LGP	CK	FH	EM	TY
M	LSIM	XPQ	DHY	BE	WJ	CNV	UT	OF	GR	AK
N	VAGQ	NBT	OEW	FL	UK	XCR	PH	YD	IJ	MS
O	QXFB	UYA	EDC	LW	NK	GRM	TP	OH	IJ	SV
P	EGMU	SPJ	TWQ	AN	YV	IDH	KR	BL	CO	FX
Q	MNEJ	YVX	SWA	PL	GK	QIB	RF	HT	DU	OC
R	DERB	OKI	JGY	CX	WV	PAN	SH	LM	TU	FQ
S	LRBK	CXY	MTJ	IQ	HW	NDE	VS	OP	UG	AF
T	MUOB	YHL	WIR	NE	CJ	VSQ	PK	FA	DG	TX
U	GVTK	AYD	FLJ	HQ	XR	SBO	NE	WM	PU	CI
V	GXSU	DTY	QVP	BO	AI	WLK	CR	EN	MJ	HF
W	USTG	PNI	HJW	RA	CQ	YBM	VE	OX	FK	DL
X	PUIN	REJ	TBA	YG	FD	KMQ	SW	CL	HO	XV
Y	IHAE	OKM	CYS	DT	WX	QLF	VG	PR	NJ	UB

NAVAIDS

Id	Name	Channel	Position	Elevation
BCE	Bryce Canyon	75	N3741.35 W11218.23	9040
BIH	Bishop	33	N3722.62 W11821.99	4114
BLD	Boulder	114	N3559.75 W11451.82	3650
BTY	Beatty	94	N3648.54 W11644.86	2925
CDC	Cedar City	120	N3747.24 W11304.90	5463
DAG	Daggett	79	N3457.75 W11634.69	1760
EED	Needles	99	N3445.96 W11428.43	650
GFS	Goffs	91	N3507.87 W11510.59	4019
GRL	Groom Lake	18	N3713.91 W11548.16	4475
HEC	Hector	74	N3447.83 W11627.78	1854
ILC	Wilson Creek	110	N3815.02 W11423.65	9318
INS	Creech AFB	87	N3635.20 W11540.12	3101
LAS	McCarran Intl	116	N3604.78 W11509.59	2142
LSV	Nellis	12	N3614.68 W11501.50	1864
MLF	Milford	58	N3821.62 W11300.79	4977
MMM	Mormon Mesa	90	N3646.16 W11416.65	2120
MVA	Mina	98	N3833.92 W11801.97	7860
OAL	Coale Dale	124	N3800.20 W11746.23	4800
PGS	Peach Springs	57	N3537.48 W11332.67	4754
TPH	Tonopah Muni	119	N3801.84 W11702.01	5330
TQQ	Silverbow	77	N3748.00 W11647.00	5500
UTI	St George	23	N3705.29 W11335.53	2871



PAR	RWY	CAT	MINIMA	ARP	ELEV	Scale
	21L	A B D E	2057 - 0.8 200 (200-0.8/1.6) GS 3°	36° 14.060° N 115° 01.058° W	1857 [ft] 566 [m]	0 300 600 900 1200 1500 [m] 0 1000 2000 3000 4000 5000 [ft]
	3R	A B D E	2057 - 0.8 200 (200-0.8/1.6) GS 3°			
	21R	A C D E	2257 - 1.2 350 (350-1.2/1.6)			
	3L	A C D E	2257 - 1.2 350 (350-1.2/1.6)			

RWY	TORA	TODA	ASDA	LDA	PSN	THR	ALS
21L	10051 [ft] 3063 [m]	11051 [ft] 3368 [m]	11051 [ft] 3368 [m]	10051 [ft] 3063 [m]	36°14.043' N	115°01.018' W	⊕
3R	10120 [ft] 3084 [m]	11120 [ft] 3398 [m]	11120 [ft] 3398 [m]	10120 [ft] 3084 [m]	36°13.029' N	115°02.038' W	

ATIS	NELLIS GROUND	NELLIS TOWER	NELLIS CONTROL	TACAN	ILS RWY 21L	NELLIS EAST	NELLIS WEST
270.100 MHz	275.800 121.800	327.000 132.55	317.525	LSV 12X	109.10 Mhz	384.400	385.000

HELICOPTER ARR/DEP VAD-CHART | VALID 2014

NELLIS AFB (KLSV)
LAS VEGAS, NEVADA

ATIS
270.100
NELLIS GROUND
275.800
NELLIS TOWER
327.000
BLACKJACK
377.800

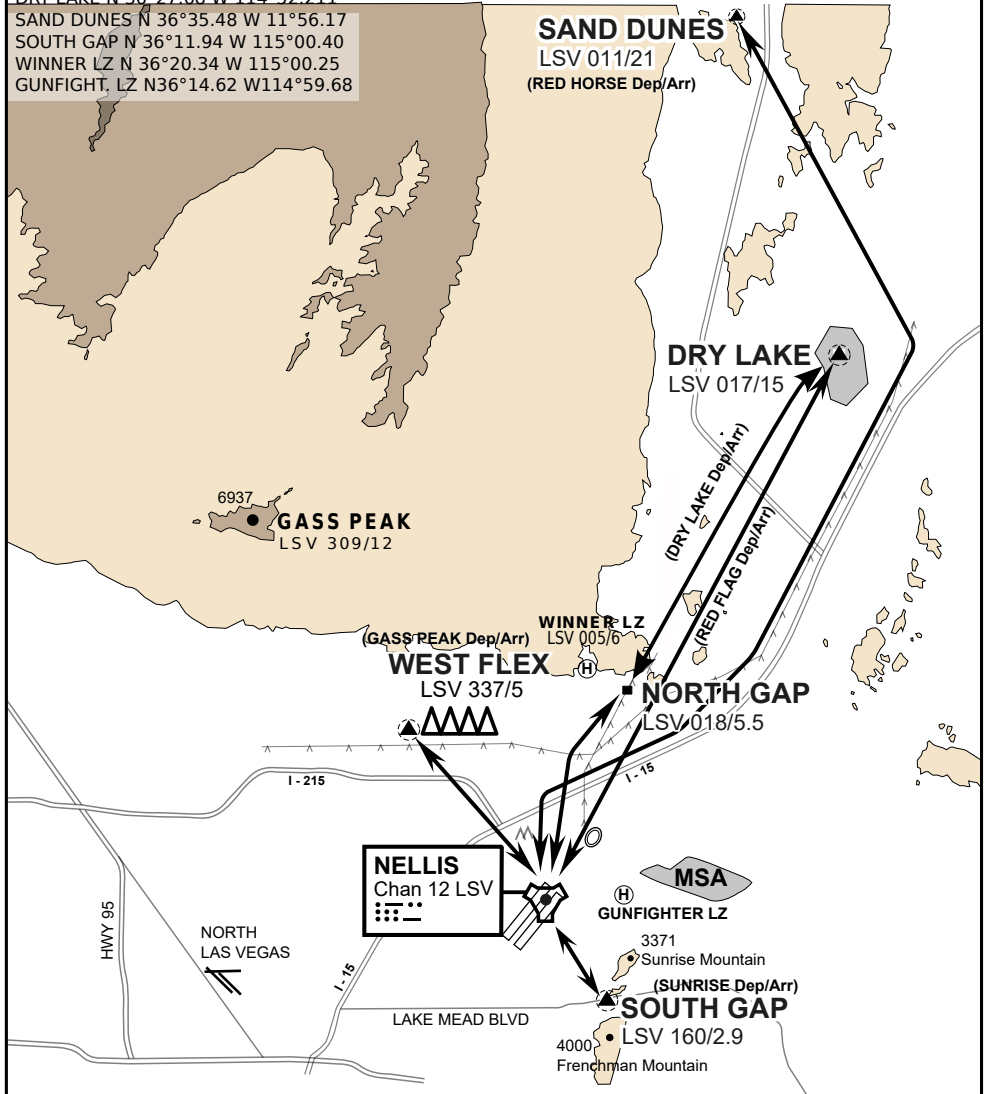
CAUTION: If unable to comply
with restrictions advise ATC
prior to departure.

VMC ONLY

if below WX Minima request SVFR



JOLLY PAD N 36°15.08 W 115°01.65
WEST FLEX N 36°18.64 W 115°08.00
NORTH GAP N 36°20.00 W 114°59.30
DRY LAKE N 36°27.68 W 114°52.211
SAND DUNES N 36°35.48 W 11°56.17
SOUTH GAP N 36°11.94 W 115°00.40
WINNER LZ N 36°20.34 W 115°00.25
GUNFIGHT, LZ N36°14.62 W114°59.68



vJABeG32NTRR NAV CHART

HELICOPTER ARRIVAL AND DEPARTURES ROUTES

v.110 22APR20

HELICOPTER ARR/DEP VAD-CHART | VALID 2014

NELLIS AFB (KLSV)
LAS VEGAS, NEVADA

ATIS
270.100
NELLIS GROUND
275.800
NELLIS TOWER
327.000
BLACKJACK
377.800

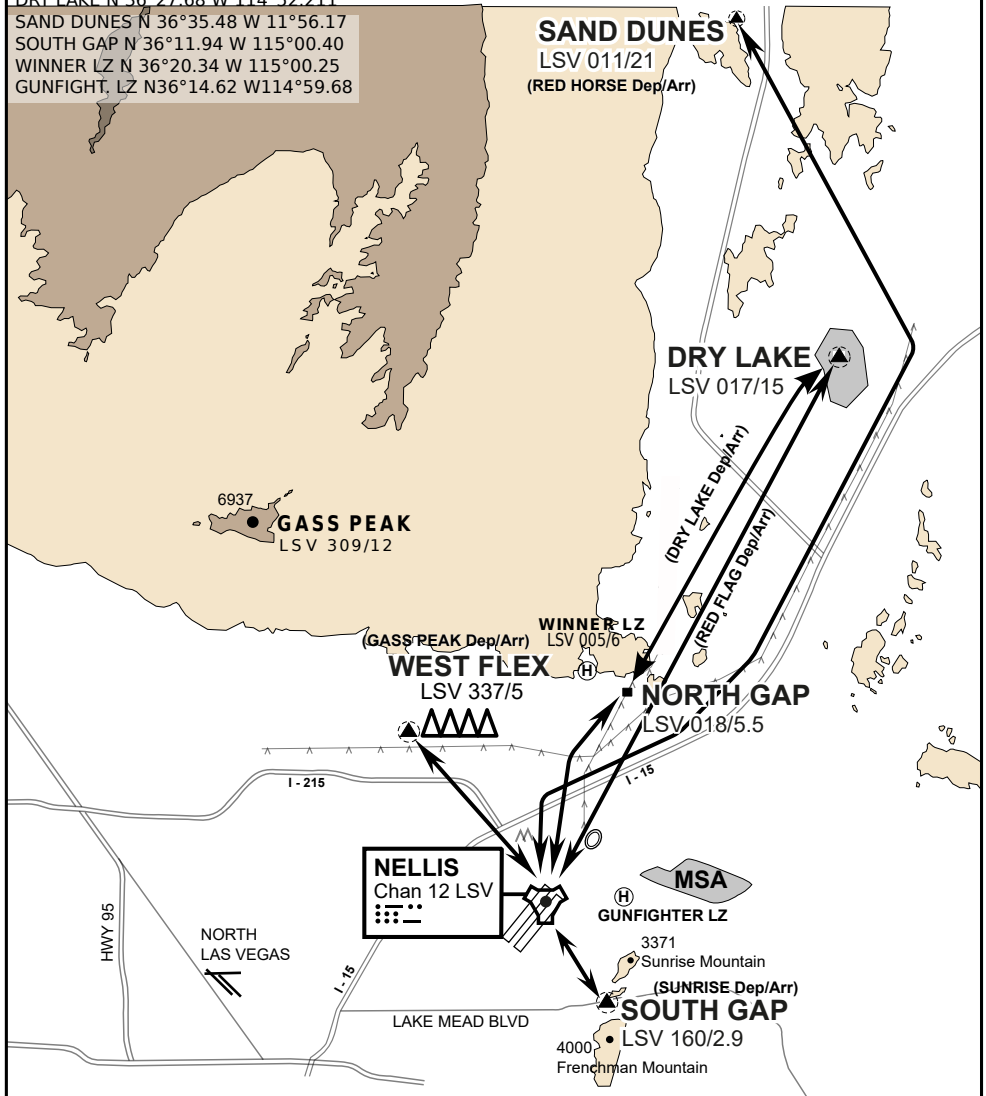
CAUTION: If unable to comply
with restrictions advise ATC
prior to departure.

VMC ONLY

if below WX Minima request SVFR



JOLLY PAD N 36°15.08 W 115°01.65
WEST FLEX N 36°18.64 W 115°08.00
NORTH GAP N 36°20.00 W 114°59.30
DRY LAKE N 36°27.68 W 114°52.211
SAND DUNES N 36°35.48 W 11°56.17
SOUTH GAP N 36°11.94 W 115°00.40
WINNER LZ N 36°20.34 W 115°00.25
GUNFIGHT, LZ N36°14.62 W114°59.68



vJABeG32NTRR NAV CHART

HELICOPTER ARRIVAL AND DEPARTURES ROUTES

v.110 22APR20



INDIAN SPRINGS, NEVADA

TACAN INS Chan 87	APCH CRS 065°	Rwy ldg TDZE 3133	9002 3113
		Arpt Elev 3113	

INDIAN SPRINGS AF AUX (KINS)

▼ * MISSED APPROACH: Straight ahead to INS TACAN, intercept INS R-outbound, cross 17 DME at or above 9500, then direkt KSV TACAN 114

NELLIS CON

CREECH AFB TOWER
118.30 60.60

GND CON

NOT FOR CIVIL USE

FOR USE UNDER BASIC VFR
WEATHER MINIMUMS ONLY

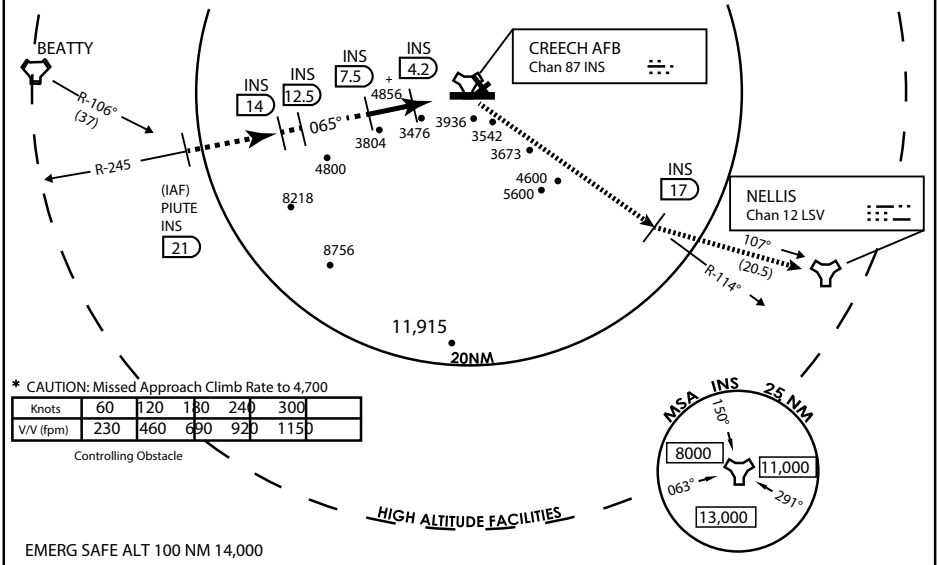
PILOT IS RESPONSIBLE FOR TERRAIN/OBSTACLE AVOIDANCE AND APPROPRIATE VFR CLOUD CLEARANCE FOR ALL

CAUTION: Descent gradients are greater than allowed under standard TERPS criteria and inbound course does not meet straight-in criteria

CAUTION: Final approach course crosses Runway centerline at MIDFIELD. Maneuvering left of course required prior to landing. Do not Maneuver farther north than the INS R- 258

Modified by viaBog 66 for use with DCS
NOT FOR REAL LIFE NAVIGATION

Modified by viaBog 66 for use with DCS
NOT FOR REAL LIFE NAVIGATION



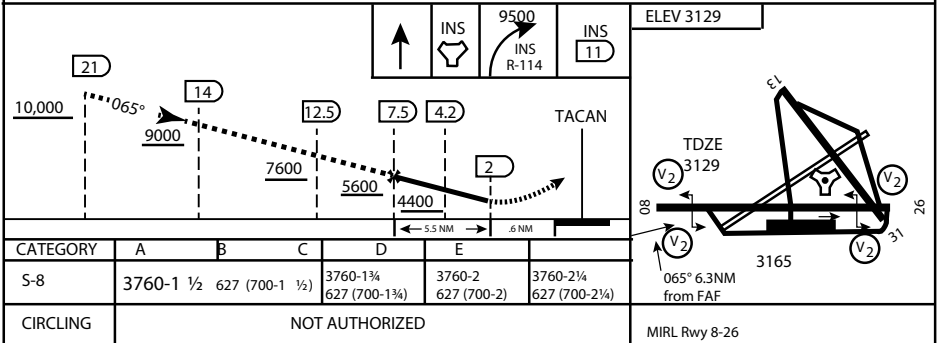
* CAUTION: Missed Approach Climb Rate to 4,700

Knots	60	120	180	240	300
V/V (fpm)	230	460	690	920	1150

Controlling Obstacle

HIGH ALTITUDE FACILITIES

EMERG SAFE ALT 100 NM 14,000



CITY OF INDIAN, NEVADA

INDIAN SPRINGS AF AUX (KINS)

(FOR DAY VFR USE ONLY)



AIRPORT DIAGRAM

476 VFG

CREECH AFB (KINS)
INDIAN SPRINGS, NEVADA

ATIS
 122.5
 CREECH TOWER
 118.4 360.7 38.65
 GND CON
 118.3 275.8
 CLNC DEL

115°42'W

FIELD
 ELEV
 3127

80

972 X 150

HOT CARGO PAD

BAK-12

VAR 12.5° E

WEST EOR

115°41'W

476 VFG JAN 2019

476 VFG JAN 2019

CONTROL TOWER
 BASE OPS

RPA LOLA WEST

RPA LOLA EAST

LOLA / HUNG ORDNANCE

199 X 100
 ELEV 3127
 RUNWAY 31/13
 MQ/RQ-1 ONLY

258.5°

860 X 100
 313.8°

4064 X 100
 133.8°

BAK-12

ELEV 3127

115°40'W

EAST EOR

1030 X 150

26

AIRPORT DIAGRAM

INDIAN SPRINGS, NEVADA
CREECH AFB (KINS)