

**MISSION DATA CARD**

OPORD		Callsign		Mission		Date/Time		
3312/2024		Tiger 1		Training		172000OCT24		
Task	GunPatern (NCR 11/15)					Freq		
AO	R64 W					261.15		
Departure				Recovery				
FYTTR LOW				STRYK				
#	Callsign		Pilot		IFF	TCN	LSR	NET
-1	Tiger 1-1		Ghost		1011	1Y	1551	01/01

**LOADOUT**

A/A	2xA9X, A120C				GUN	100% HEI-T	
A/G					CHF	90	
POD	TGP				FLR	30	
TKS	FPU-8A				FUEL	100%	

**TOLD**

	Takeoff	Target	Joker	Bingo	Land
FUEL	13047			3500	2000

**AIRBASES**

	Name		TCN	ATIS	GND	TWR	RWY	Elev	ILS
Dep	Nellis AFB		12X	270.1	275.8	327.0	21L	1850	109.1
Arr	Nellis AFB		12X	270.1	275.8	327.0	21L	1850	109.1
Div	Creech AFB		87X	290.45	275.8	360.6			

**FLIGHTPLAN**

#	Name	Navaid/Coords/DME	ALT	TOT
1	FYTTR	LSV 269/33 (N36 21.440 W115 41.470)	14000	
2	R64 W Circle	INS 354/6 (N36 40.900 W115 40.400)	3022	
3	STRYK	LSV 282/26 (N36 25.620 W115 30.700)	9500	
4	Nellis	N36 14.680 W115 01.500		

**COMMS**

Radio	Usage
1	11(Atis), 3(NG), 4(NT), 16(BJ), 18(SH), 16(BJ), 4(NT), 3(NG)
2	Inhouse 261.15
3	MIDS A:22 / B:44

**SUPPORT****Tanker**

Callsign	TCN	Freq	ALT	TAS
ARCO 1	113Y	319.8	FL250	450
	Pos	AR-625: MVA 168/77 (N3717 W11802)		
SHELL 2	115Y	360.8	FL250	430
	Pos	AR-635: MLF 260/127 (N3831 W11542)		

**AWACS**

Callsign	Freq	ALT	Pos
MAGIC	377.8	FL270	N3749 W11417 - N3713 W11446

## OTHER FLIGHTS

Callsign	Mission	Airframe	Freq	TCN	Grpld	Laser
Edelweiss 1	Training	2x F-16C	135.0	1/64		171X
AO	NTTR	Task	Departure / Recovery Training			
Raptor 1	Training	2x F-16C	134.0	1/64		161X
AO	Range 61	Task	LGB Body Training			
Raptor 3	Training	3x F-16C	134.5	1/64		163X
AO	Range 61	Task	LGB Body Training			
Monster 3	Training	4x A-10C	132.15	1/64	21	161X
AO	ELGIN	Task	PROF.-EXERCISES			
Nazgul 6	Training	1x F-15E	262.45	1/64		156X
AO	BVR-X	Task	BVR Training			
Rattler 1	Training	4x AH-64D	133.5	1/64		125X
AO	LATNG	Task	Radar-Training			
Edelweiss 6	Training	2x A-10C	134.65	1/64	40	166X
AO	SW Corner Texaco 3-1	Task	AAR + Formation Training			
Panther 1	Training	2x F/A-18C	261.35	1/64		157X
AO	BVR-Y	Task	BVR Training			

**RADIO CHANNELS**

#	Freq	Name
1		Flight/Squadron specific
2	289.4	Nellis Clearance Delivery
3	275.8	Nellis Ground
4	327.0	Nellis Tower
5	385.4	Nellis Approach/Departure West
6	273.55	Nellis Approach/Departure East
7	317.525	Nellis Control -- Sally
8	254.4	Nellis Control-- Lee
9	305.6	SOF Bullseye
10	343.725	EMERGENCY SINGLE FRQ
11	270.1	Nellis ATIS
12	360.625	Creech AFB Tower
13	250.1	HAVE QUICK 13
14	251.1	HAVE QUICK 14
15	252.1	HAVE QUICK 15
16	377.8	Blackjack
17	265.0	KC-135 AR-641A
18	360.8	KC-135MPRS AR-635
19	319.8	KC-135MPRS AR-625
20	300.05	KC-135 AR-231V

**RAMROD**

0	1	2	3	4	5	6	7	8	9
W	O	R	K	P	L	A	C	E	S

**KTC 1400 C**

	0	1	2	3	4	5	6	7	8	9
A	TRBI	POM	DJG	WY	UF	VSC	XH	EA	NK	LQ
B	LDMG	QCE	TBO	NV	HX	JRY	KA	UF	IP	SW
C	TYCD	AUV	IHX	WB	NR	GLO	SF	MQ	EK	JP
D	YFGS	PNR	KXA	WD	LC	UMQ	OV	BJ	TI	EH
E	DCSV	TMB	GPQ	HW	XN	JUA	EK	OI	YR	FL
F	GAJH	FTW	LMB	VP	CD	ISN	RK	EU	QX	YO
G	QEAN	KDB	ULC	VR	FJ	IPS	MH	YG	TW	OX
H	UANJ	BKW	GOR	TP	MQ	VHS	ID	FL	YC	EX
I	EWSJ	XUR	GBV	KI	DQ	MCL	AY	FO	PT	HN
J	NIYP	SXT	VOK	UE	MQ	LFJ	BR	GC	DH	AW
K	XLWV	THU	COS	QR	PA	BKI	DG	YE	JM	NF
L	NEFD	VKA	LGH	UQ	IO	JYT	BC	XM	PS	RW
M	FONK	QLU	EMW	JY	SR	VTP	CB	IX	DA	GH
N	NPJF	LET	KUA	DM	VC	SGH	RW	OY	XI	QB
O	CTWG	XJS	VDA	LM	KF	UOH	YP	IN	BR	QE
P	WKXH	NTI	OLC	ED	MB	FUP	QG	SA	VY	RJ
Q	VRCB	AYL	SIO	NT	WX	FHP	UD	JE	GM	QK
R	GIJH	PLF	CVD	ME	UW	YAS	BT	KN	RQ	XO
S	PMNK	BDR	GSJ	HY	TQ	AWO	VE	CL	FI	XU
T	LECW	RTB	FNK	SY	MU	VIO	DP	JG	QX	AH
U	BAYN	RSQ	IUV	HD	LM	PGK	XE	WF	CT	OJ
V	DAMV	OHU	CBJ	WE	KF	GLQ	XP	IS	YT	RN
W	GSTH	XBR	QEM	JO	FU	KID	LW	CP	YV	NA
X	SPCX	GRB	UEF	YO	DQ	MIN	WT	JA	HV	KL
Y	TYJM	KDB	SHP	NL	UF	WCE	GQ	RO	VA	IX

**NAVAIDS**

<b>Id</b>	<b>Name</b>	<b>Channel</b>	<b>Position</b>	<b>Elevation</b>
BCE	Bryce Canyon	75	N3741.35 W11218.23	9040
BIH	Bishop	33	N3722.62 W11821.99	4114
BLD	Boulder	114	N3559.75 W11451.82	3650
BTY	Beatty	94	N3648.54 W11644.86	2925
CDC	Cedar City	120	N3747.24 W11304.90	5463
DAG	Daggett	79	N3457.75 W11634.69	1760
EED	Needles	99	N3445.96 W11428.43	650
GFS	Goffs	91	N3507.87 W11510.59	4019
GRL	Groom Lake	18	N3713.91 W11548.16	4475
HEC	Hector	74	N3447.83 W11627.78	1854
ILC	Wilson Creek	110	N3815.02 W11423.65	9318
INS	Creech AFB	87	N3635.20 W11540.12	3101
LAS	McCarran Intl	116	N3604.78 W11509.59	2142
LSV	Nellis	12	N3614.68 W11501.50	1864
MLF	Milford	58	N3821.62 W11300.79	4977
MMM	Mormon Mesa	90	N3646.16 W11416.65	2120
MVA	Mina	98	N3833.92 W11801.97	7860
OAL	Coale Dale	124	N3800.20 W11746.23	4800
PGS	Peach Springs	57	N3537.48 W11332.67	4754
TPH	Tonopah Muni	119	N3801.84 W11702.01	5330
TQQ	Silverbow	77	N3748.00 W11647.00	5500
UTI	St George	23	N3705.29 W11335.53	2871



RWY 3L-21R  
 PCN 46 R/C/W/T  
 RWY 3R-21L  
 PCN 51 R/C/W/T  
 2017

PAR	RWY	CAT	MINIMA		ARP	ELEV	Scale 1:35'500	
	21L	A B D E	2057 - 0.8 200 (200-0.8/1.6)	GS 3°	36° 14.060° N 115° 01.058° W	1857 [ft] 566 [m]	0 300 600 900 1200 1500 [m]	
	3R	A B D E	2057 - 0.8 200 (200-0.8/1.6)	GS 3°			0 1000 2000 3000 4000 5000 [ft]	
SRA	21R	A C D E	2257 - 1.2 350 (350-1.2/1.6)					
	3L	A C D E	2257 - 1.2 350 (350-1.2/1.6)					

RWY	TORA	TODA	ASDA	LDA	PSN	THR	ALS
21L	10051 [ft] 3063 [m]	11051 [ft] 3368 [m]	11051 [ft] 3368 [m]	10051 [ft] 3063 [m]	36°14.043' N	115°01.018' W	⊕
3R	10120 [ft] 3084 [m]	11120 [ft] 3398 [m]	11120 [ft] 3398 [m]	10120 [ft] 3084 [m]	36°13.029' N	115°02.038' W	

ATIS	NELLIS GROUND	NELLIS TOWER	NELLIS CONTROL	TACAN	ILS RWY 21L	NELLIS EAST	NELLIS WEST
270.100 MHz	275.800   121.800	327.000   132.55	317.525	LSV 12X	109.10 Mhz	384.400	385.000



# FYTTR LOW VISUAL OPERATION CHART | VALID 2014

ATIS  
270.100  
NELLIS GROUND  
275.800  
NELLIS TOWER  
327.000  
NELLIS CONTROL  
317.525  
NELLIS DEP/APP EAST  
384.400  
BLACKJACK  
377.800

CAUTION: If unable to comply with restrictions advise ATC prior to departure.



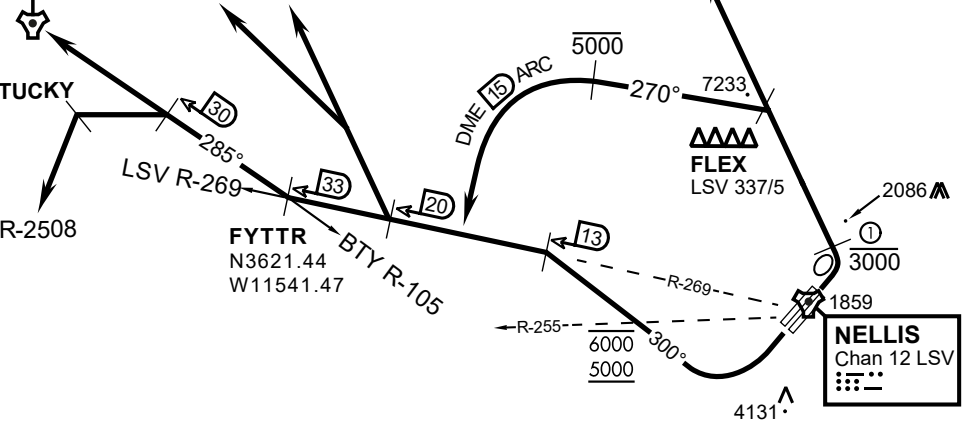
## VMC ONLY

### PILOT RESPONSIBLE FOR TERRAIN AVOIDANCE

① 4 NM from RWY 3L/R

**BEATTY**  
Chan 94 BTY

RANGE 64/65  
RANGE 63



### DEPARTURE ROUTE DESCRIPTION

#### TAKEOFF RWY 3L/R:

- Remain below 3,000' MSL until north of Race Track and turned westbound.
- Turn left within 4NM of Nellis direct FLEX. Fly north of FLEX and turn left heading 270°.
- Intercept LSV 15 DME ARC at or below 5,000' MSL.
- ARC south, intercept LSV R-269 outbound. Maintain VFR.

#### TAKEOFF RWY 21L/21R:

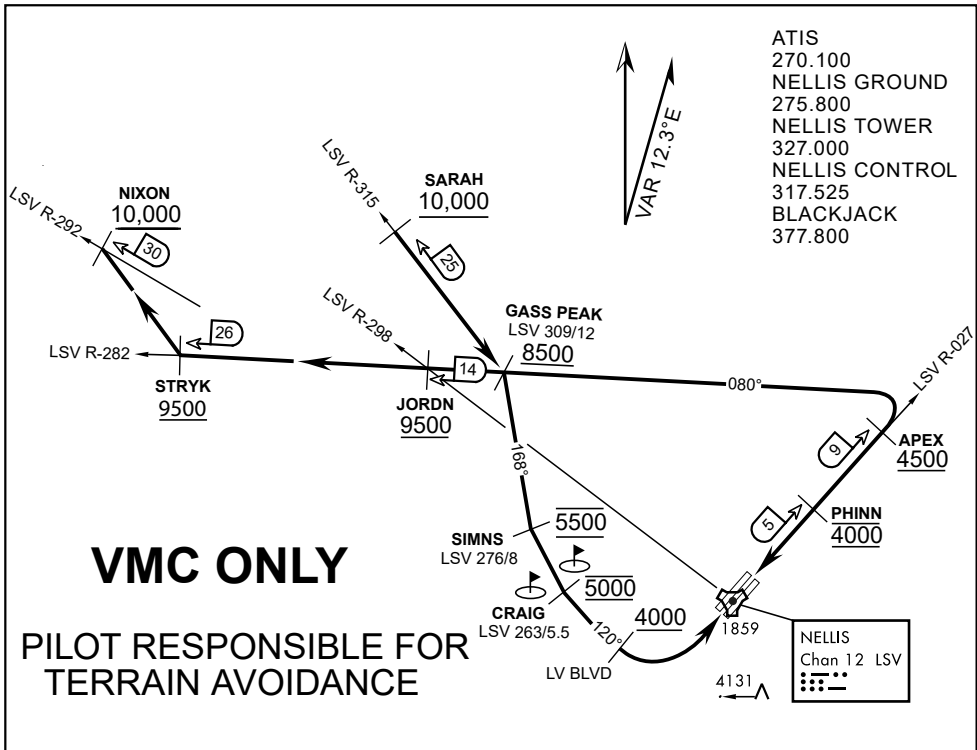
- Follow Noise Abatement Procedures.
- Fly runway heading until past Golf Course, turn right heading 300°.
- Cross LSV R-255 between 5,000' and 6,000' , intercept and proceed outbound on the LSV R-269.Recommend climb to 8,500' MSL or appropriate VFR altitude for overflight of North Las Vegas Training Area. Fly routing for appr. mission/transition.

#### TRANSITIONS:

- R-4806:** Turn right at the LSV 269/20 direct to assigned ranges.
- BEATTY:** Turn right at FYTTR direct BTY via the BTY R-105
- R-2508:** Turn right at the FYTTR, intercept the BTY 105/30, direct TUCKY, then direct R-2508

## FYTTR DEPARTURE AND TRANSITIONS (FYTTR LOW)

v.15 13NOV20 NTRR NAV CHART



ATIS  
270.100  
NELLIS GROUND  
275.800  
NELLIS TOWER  
327.000  
NELLIS CONTROL  
317.525  
BLACKJACK  
377.800

**VMC ONLY**

**PILOT RESPONSIBLE FOR TERRAIN AVOIDANCE**

**APPROACH ROUTE DESCRIPTION**

**APPROACH RWY 3L/R**

Cross STRYK at or above 9,500' MSL, proceed direct GASS PEAK. Cross JORDN at or above 9,500' MSL, cross GASS PEAK at or above 8,500' MSL. Proceed direct SIMNS and cross at 5,500' MSL. Cross Las Vegas Blvd at or above 4,000' MSL then to 3,500' MSL for Initial. Remain within 4 DME if LSV on turn to final.

**VFR STRAIGHT-IN RWY 3L/R**

Depart CRAIG & descend to be at 3,000' MSL by Las Vegas Blvd. Do not descend below 3,000' MSL until within 5 DME of LSV or 4 NM of the runway on turn to final.

**APPROACH RWY 21L/R**

Cross STRYK at or above 9,500' MSL, proceed direct GASS PEAK. Cross JORDN at or above 9,500' MSL, cross GASS PEAK at or above 8,500' MSL. Cross APEX at or above 4,500' MSL then direct 5NM initial. Descend to cross PHINN at 4,000' MSL, Inside 5 NM descend to 3,500' MSL.

**VFR STRAIGHT-IN RWY 21L/R**

Cross APEX at 4,000' MSL. Descend to be at 3,000' MSL at PHINN. Descend to 3,000' MSL at LSV 027/5.

**RANGE 63B EXIT**

**SOUTH:** Via NIXON at or above 10,000' MSL, then direct STRYK.  
**EAST:** Via SARAH at or above 10,000' MSL, then direct GASS PEAK.



INDIAN SPRINGS, NEVADA

TACAN INS Chan 87	APCH CRS 065°	Rwy ldg TDZE 3133	9002 3113
		Arpt Elev 3113	

INDIAN SPRINGS AF AUX (KINS)

**▼** \* MISSED APPROACH: Straight ahead to INS TACAN, intercept INS R-outbound, cross 17 DME at or above 9500, then direkt KSV TACAN 114

NELLIS CON

CREECH AFB TOWER  
118.30 60.60

GND CON

**NOT FOR CIVIL USE**

FOR USE UNDER BASIC VFR  
WEATHER MINIMUMS ONLY

PILOT IS RESPONSIBLE FOR TERRAIN/OBSTACLE AVOIDANCE AND APPROPRIATE VFR CLOUD CLEARANCE FOR ALL

**CAUTION:** Descent gradients are greater than allowed under standard TERPS criteria and inbound course does not meet straight-in criteria

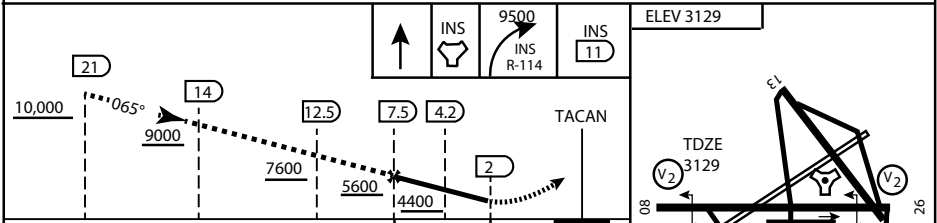
**CAUTION:** Final approach course crosses Runway centerline at MIDFIELD. Maneuvering left of course required prior to landing. Do not Maneuver farther north than the INS R- 258

Modified by viaBog 66 for use with DCS  
NOT FOR REAL LIFE NAVIGATION

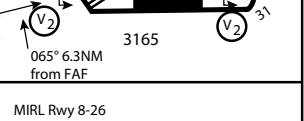
Modified by viaBog 66 for use with DCS  
NOT FOR REAL LIFE NAVIGATION



EMERG SAFE ALT 100 NM 14,000



CATEGORY	A	B	C	D	E
S-8	3760-1 1/2	627 (700-1 1/2)	3760-1 3/4 627 (700-1 3/4)	3760-2 627 (700-2)	3760-2 1/4 627 (700-2 1/4)
CIRCLING	NOT AUTHORIZED				



CITY OF INDIAN, NEVADA

INDIAN SPRINGS AF AUX (KINS)

(FOR DAY VFR USE ONLY)



# AIRPORT DIAGRAM

476 VFG

CREECH AFB (KINS)  
INDIAN SPRINGS, NEVADA

ATIS  
122.5  
CREECH TOWER  
118.4 360.7 38.65  
GND CON  
118.3 275.8  
CLNC DEL

115°42'W

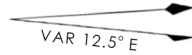
FIELD  
ELEV  
3127

80

972 X 150

HOT  
CARGO  
PAD

BAK-12



WEST  
EOR

115°41'W

476 VFG JAN 2019

476 VFG JAN 2019

CONTROL  
TOWER  
BASE  
OPS

RPA LOLA  
WEST

RPA LOLA  
EAST

LOLA /  
HUNG  
ORDNANCE

199 X 100  
ELEV  
3127

RUNWAY  
31/13  
MQ/RQ-1  
ONLY

9002 X 150

258.5°

860 X 100

313.8°

4064 X 100

115°40'W

BAK-12

ELEV  
3127

EAST  
EOR

1030 X 150

26

# AIRPORT DIAGRAM

INDIAN SPRINGS, NEVADA  
CREECH AFB (KINS)