

MISSION DATA CARD

OPORD		Callsign		Mission		Date/Time	
3311/2024		Monster 1		Training		142000OCT24	
Task	MSC Training					Freq	
AO	LATN Central					132.15	
Departure				Recovery			
A10 TAC NORTH				RAMMM			
#	Callsign	Pilot	IFF	TCN	LSR	NET	
-1	Monster 1-1	Marsy	1411	1Y	1611	21/01	
-2	Monster 1-2	addiks	1412	64Y	1612	21/02	
-3	Monster 1-3	Toolface	1413	64X	1613	21/03	
-4	Monster 1-4	Crusader	1414	1X	1614	21/04	

LOADOUT

A/A	2xA9M	GUN	100% CM
A/G	7M282L	CHF	240
POD	TGP, A184L	FLR	240
TKS		FUEL	75%

TOLD

	Takeoff	Target	Joker	Bingo	Land
FUEL	8315				

AIRBASES

	Name	TCN	ATIS	GND	TWR	RWY	Elev	ILS
Dep	Nellis AFB	12X	270.1	275.8	327.0	21L	1850	109.1
Arr	Nellis AFB	12X	270.1	275.8	327.0	21L	1850	109.1

FLIGHTPLAN

#	Name	Navaid/Coords/DME	ALT	TOT
1	APEX	LSV 027/09 (N36 21.580 W114 54.340)		
2	DRY LAKE	LSV 030/15 (N36 27.680 W114 52.211)		
3	LATNCAA01	N36 10.605 W114 26.850		
4	RAMMM	LSV 024/38 (N36 45 W114 33.330)		
5	APEX2	LSV 027/09 (N36 21.580 W114 54.340)		

NOTES

A10MSC04 - Formation Takeoff
A10MSC22 - FENCE Check
A10MSC09 - Lead Change
A10MSC20 - OPs check
A10MSC25 - Ground Attack Roles
A10MSC16 - Tactical Overhead Break

-Terminate vs KIO

-PUSH vs GO

OTHER FLIGHTS

Callsign	Mission	Airframe	Freq	TCN	Grpld	Laser
Edelweiss 1	Training	4x F/A-18C	264.05	1/64		170X
AO		Task	Formation Training			
Edelweiss 2	Training	2x F-16C	135.0	1/64		171X
AO	NTTR	Task	Departure / Recovery Training			
Raptor 1	Training	2x F-16C	134.0	1/64		162X
AO	Range 61	Task	LGB Training			
Nazgul 6	Training	4x F-15E	262.45	1/64		156X
AO	BFM Range	Task	WVR			
Rattler 4	Training	4x AH-64D	133.5	1/64		125X
AO	LATNG	Task	Radar-Training			
Raptor 2	Training	3x F-16C	134.5	1/64		163X
AO	Range 61	Task	LGB Training			
Edelweiss 6	Training	2x A-10C	132.25	1/64	25	172X
AO	Nellis	Task	AAR			
Raptor 3	Training	2x F-16C	134.0	1/64		162X
AO	Range 61	Task	LGB Training			
Edelweiss 3	Training	1x F/A-18C	264.35	1/64		173X
AO		Task				

RADIO CHANNELS

#	Freq	Name
1		Flight/Squadron specific
2	289.4	Nellis Clearance Delivery
3	275.8	Nellis Ground
4	327.0	Nellis Tower
5	385.4	Nellis Approach/Departure West
6	273.55	Nellis Approach/Departure East
7	317.525	Nellis Control -- Sally
8	254.4	Nellis Control-- Lee
9	305.6	SOF Bullseye
10	343.725	EMERGENCY SINGLE FRQ
11	270.1	Nellis ATIS
12	360.625	Creech AFB Tower
13	250.1	HAVE QUICK 13
14	251.1	HAVE QUICK 14
15	252.1	HAVE QUICK 15
16	377.8	Blackjack
17	265.0	KC-135 AR-641A
18	360.8	KC-135MPRS AR-635
19	319.8	KC-135MPRS AR-625
20	300.05	KC-135 AR-231V

RAMROD

0	1	2	3	4	5	6	7	8	9
P	A	D	L	O	C	K	I	N	G

KTC 1400 C

	0	1	2	3	4	5	6	7	8	9
A	JDVU	IHE	PNA	QO	TY	CWS	RF	KM	LG	BX
B	IYAE	MUH	SGO	TV	WP	QCB	JR	NF	XD	KL
C	SGEA	TCN	IFX	PH	VO	BDM	WL	KQ	YR	UJ
D	TGJB	HWI	XQU	YL	PV	ROE	MF	AD	CN	SK
E	DNLW	QRB	FCG	SE	HO	YJX	VK	MU	PT	AI
F	ECLO	IGY	FJN	VS	DT	XWQ	PA	MB	RU	KH
G	IRSU	OGP	VKW	NH	TE	JMQ	BD	XL	CY	FA
H	PFGO	EDB	AJK	UY	VR	NSQ	HL	MI	WC	TX
I	RXFM	NBE	QSJ	PT	IG	COA	KV	DU	YH	WL
J	PIGW	HMF	SOU	NA	RX	QVD	BC	EJ	KL	TY
K	DASI	OYT	JMN	ER	PW	GKQ	FC	LX	VH	BU
L	JIOU	WVB	XQR	DN	SA	LGP	CK	FH	EM	TY
M	LSIM	XPQ	DHY	BE	WJ	CNV	UT	OF	GR	AK
N	VAGQ	NBT	OEW	FL	UK	XCR	PH	YD	IJ	MS
O	QXFB	UYA	EDC	LW	NK	GRM	TP	OH	IJ	SV
P	EGMU	SPJ	TWQ	AN	YV	IDH	KR	BL	CO	FX
Q	MNEJ	YVX	SWA	PL	GK	QIB	RF	HT	DU	OC
R	DERB	OKI	JGY	CX	WV	PAN	SH	LM	TU	FQ
S	LRBK	CXY	MTJ	IQ	HW	NDE	VS	OP	UG	AF
T	MUOB	YHL	WIR	NE	CJ	VSQ	PK	FA	DG	TX
U	GVTK	AYD	FLJ	HQ	XR	SBO	NE	WM	PU	CI
V	GXSU	DTY	QVP	BO	AI	WLK	CR	EN	MJ	HF
W	USTG	PNI	HJW	RA	CQ	YBM	VE	OX	FK	DL
X	PUIN	REJ	TBA	YG	FD	KMQ	SW	CL	HO	XV
Y	IHAE	OKM	CYS	DT	WX	QLF	VG	PR	NJ	UB

NAVAIDS

Id	Name	Channel	Position	Elevation
BCE	Bryce Canyon	75	N3741.35 W11218.23	9040
BIH	Bishop	33	N3722.62 W11821.99	4114
BLD	Boulder	114	N3559.75 W11451.82	3650
BTY	Beatty	94	N3648.54 W11644.86	2925
CDC	Cedar City	120	N3747.24 W11304.90	5463
DAG	Daggett	79	N3457.75 W11634.69	1760
EED	Needles	99	N3445.96 W11428.43	650
GFS	Goffs	91	N3507.87 W11510.59	4019
GRL	Groom Lake	18	N3713.91 W11548.16	4475
HEC	Hector	74	N3447.83 W11627.78	1854
ILC	Wilson Creek	110	N3815.02 W11423.65	9318
INS	Creech AFB	87	N3635.20 W11540.12	3101
LAS	McCarran Intl	116	N3604.78 W11509.59	2142
LSV	Nellis	12	N3614.68 W11501.50	1864
MLF	Milford	58	N3821.62 W11300.79	4977
MMM	Mormon Mesa	90	N3646.16 W11416.65	2120
MVA	Mina	98	N3833.92 W11801.97	7860
OAL	Coale Dale	124	N3800.20 W11746.23	4800
PGS	Peach Springs	57	N3537.48 W11332.67	4754
TPH	Tonopah Muni	119	N3801.84 W11702.01	5330
TQQ	Silverbow	77	N3748.00 W11647.00	5500
UTI	St George	23	N3705.29 W11335.53	2871



RWY 3L-21R
 PCN 46 R/C/W/T
 RWY 3R-21L
 PCN 51 R/C/W/T
 2017

PAR	RWY	CAT	MINIMA			ARP	ELEV	Scale 1:35'500				
	21L	A B D E	2057 - 0.8 200 (200-0.8/1.6)	GS 3°	36° 14.060° N 115° 01.058° W	1857 [ft] 566 [m]	0	300	600	900	1200	1500 [m]
	3R	A B D E	2057 - 0.8 200 (200-0.8/1.6)	GS 3°			0	1000	2000	3000	4000	5000 [ft]
SRA	21R	A C D E	2257 - 1.2 350 (350-1.2/1.6)									
	3L	A C D E	2257 - 1.2 350 (350-1.2/1.6)									

RWY	TORA	TODA	ASDA	LDA	PSN	THR	ALS
21L	10051 [ft] 3063 [m]	11051 [ft] 3368 [m]	11051 [ft] 3368 [m]	10051 [ft] 3063 [m]	36°14.043' N	115°01.018' W	⊕
3R	10120 [ft] 3084 [m]	11120 [ft] 3398 [m]	11120 [ft] 3398 [m]	10120 [ft] 3084 [m]	36°13.029' N	115°02.038' W	

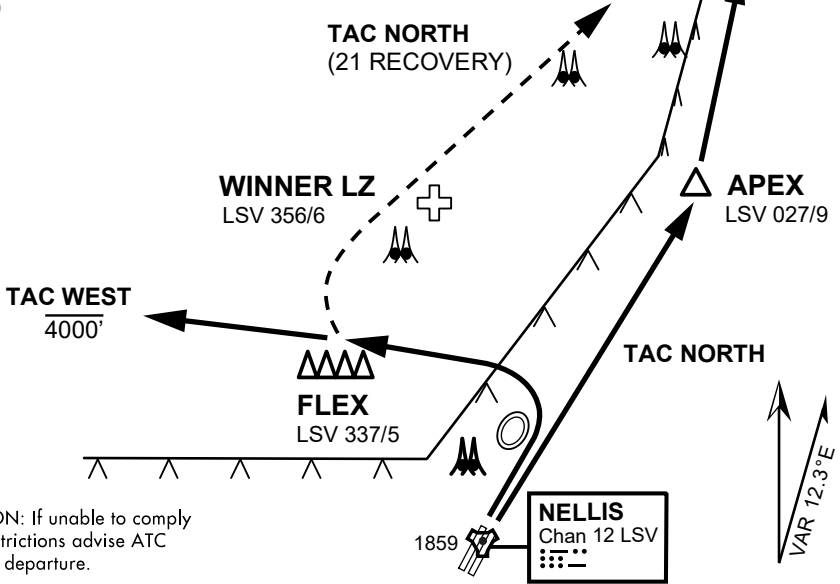
ATIS	NELLIS GROUND	NELLIS TOWER	NELLIS CONTROL	TACAN	ILS RWY 21L	NELLIS EAST	NELLIS WEST
270.100 MHz	275.800 121.800	327.000 132.55	317.525	LSV 12X	109.10 Mhz	384.400	385.000

ATIS
270.100
NELLIS GROUND
275.800
NELLIS TOWER
327.000
NELLIS CONTROL
317.525
NELLIS DEP/APP EAST
384.400
BLACKJACK
377.800

VMC ONLY

PILOT RESPONSIBLE FOR
TERRAIN AVOIDANCE

DRY LAKE
LSV 017/15



CAUTION: If unable to comply with restrictions advise ATC prior to departure.

NELLIS
Chan 12 LSV

VAR 12.3°E



DEPARTURE ROUTE DESCRIPTION

- Tac North / Tac West departures only flown during daylight from RWY 03
- Use caution for helicopters operating 3 Nm NE of FLEX (Winner LZ).
- Flights will remain at 500' AGL until deconflicted with helicopter traffic.
- Upon reaching FLEX or Dry Lake maintain VFR, remain clear of Class B airspace, and switch frequency to coordinate for range entry.

TAC NORTH

- Proceed direct APEX then direct Dry Lake. Report "APEX" informing ATC flight will clear Class B in 3Nm enroute to Dry Lake.
- For opposite direction takeoffs when RWY 21 is the active, proceed to FLEX then to Dry Lake.
- Report "FLEX" to inform ATC flight is clear of Class B airspace. Use caution for helicopter training.

TAC WEST:

- Proceed to FLEX. Report "FLEX" to inform ATC flight is clear of Class B airspace. Remain below 4000' MSL until north of Gass Peak.

Figure A23.5. RAMMM Recovery (Not For Use In IMC).

