

MISSION DATA CARD

OPORD		Callsign		Mission		Date/Time		
3307/2024		Edelweiss		Training		121827OCT24		
Task						Freq		
AO						264.05		
Departure				Recovery				
#	Callsign		Pilot		IFF	TCN	LSR	NET

LOADOUT

A/A						GUN	
A/G						CHF	
POD						FLR	
TKS						FUEL	

TOLD

	Takeoff	Target	Joker	Bingo	Land
FUEL	10803				

AIRBASES

	Name	TCN	ATIS	GND	TWR	RWY	Elev	ILS
Div	Creech AFB	87X	290.45	275.8	360.6			

RADIO CHANNELS

#	Freq	Name
1		Flight/Squadron specific
2	289.4	Nellis Clearance Delivery
3	275.8	Nellis Ground
4	327.0	Nellis Tower
5	385.4	Nellis Approach/Departure West
6	273.55	Nellis Approach/Departure East
7	317.525	Nellis Control -- Sally
8	254.4	Nellis Control-- Lee
9	305.6	SOF Bullseye
10	343.725	EMERGENCY SINGLE FRQ
11	270.1	Nellis ATIS
12	360.625	Creech AFB Tower
13	250.1	HAVE QUICK 13
14	251.1	HAVE QUICK 14
15	252.1	HAVE QUICK 15
16	377.8	Blackjack
17	265.0	KC-135 AR-641A
18	360.8	KC-135MPRS AR-635
19	319.8	KC-135MPRS AR-625
20	300.05	KC-135 AR-231V

RAMROD

0	1	2	3	4	5	6	7	8	9
L	U	B	R	I	C	A	N	T	S

KTC 1400 C

	0	1	2	3	4	5	6	7	8	9
A	XKCU	QPJ	GAB	OS	NV	YEI	DH	LM	TF	WR
B	VRDH	IJQ	XFP	AO	GY	BNM	EK	LT	WS	UC
C	JXOC	PKR	DUY	FA	MV	QTG	SB	EL	WI	HN
D	SAJR	wCG	PHK	YO	IX	EFT	UV	DQ	BL	NM
E	BDGQ	AUT	NRM	JE	PF	SLY	VC	KW	OI	HX
F	EUPN	VKS	WIL	OJ	GR	BAC	HF	DM	XQ	YT
G	CEWV	PKL	BNS	AY	MR	FJO	HU	QX	IT	DG
H	AVSL	XMH	IOG	TF	PU	RJC	YQ	EK	WB	DN
I	JEPI	VTG	OCH	WS	FK	LDQ	BN	YM	AR	XU
J	DXHL	AEK	GOI	BU	RF	VCT	SW	QJ	MY	NP
K	ASGP	RFI	JCY	TN	KL	VUQ	EH	MD	BX	OW
L	USTJ	NRG	FPK	EB	CI	ADM	OH	WV	LQ	YX
M	WXBE	NQK	UIP	OS	RL	DJH	MC	YT	GF	AV
N	IEPV	QFB	MTU	LJ	OY	DGN	XR	WC	KS	HA
O	NGEF	ASH	WTD	CR	XO	QVP	IU	KM	JL	YB
P	LICF	NJE	AWB	GU	MY	QRP	VS	KX	HT	DO
Q	AGVN	DFW	IRU	LH	XO	ETK	PQ	YJ	SC	MB
R	XCEH	YDJ	TWF	NG	PU	ABR	MK	IO	LS	VQ
S	WFQX	OJE	PTA	RC	BN	IMK	UY	LV	SH	DG
T	XDCM	QHF	SEO	NA	GP	TRY	WJ	KL	BU	IV
U	XOAH	DWF	VGE	CM	NK	LYR	UI	QP	SB	JT
V	RLMD	PXU	GES	QN	KW	ACT	VB	JF	OH	YI
W	CHKV	QFX	DEG	TP	MI	NJR	YS	WL	OA	UB
X	VRYL	EPO	NSW	MA	JD	QBC	UX	KH	FT	GI
Y	XKBO	SLE	MGD	AQ	TR	CJI	HN	FW	UV	YP

NAVAIDS

Id	Name	Channel	Position	Elevation
BCE	Bryce Canyon	75	N3741.35 W11218.23	9040
BIH	Bishop	33	N3722.62 W11821.99	4114
BLD	Boulder	114	N3559.75 W11451.82	3650
BTY	Beatty	94	N3648.54 W11644.86	2925
CDC	Cedar City	120	N3747.24 W11304.90	5463
DAG	Daggett	79	N3457.75 W11634.69	1760
EED	Needles	99	N3445.96 W11428.43	650
GFS	Goffs	91	N3507.87 W11510.59	4019
GRL	Groom Lake	18	N3713.91 W11548.16	4475
HEC	Hector	74	N3447.83 W11627.78	1854
ILC	Wilson Creek	110	N3815.02 W11423.65	9318
INS	Creech AFB	87	N3635.20 W11540.12	3101
LAS	McCarran Intl	116	N3604.78 W11509.59	2142
LSV	Nellis	12	N3614.68 W11501.50	1864
MLF	Milford	58	N3821.62 W11300.79	4977
MMM	Mormon Mesa	90	N3646.16 W11416.65	2120
MVA	Mina	98	N3833.92 W11801.97	7860
OAL	Coale Dale	124	N3800.20 W11746.23	4800
PGS	Peach Springs	57	N3537.48 W11332.67	4754
TPH	Tonopah Muni	119	N3801.84 W11702.01	5330
TQQ	Silverbow	77	N3748.00 W11647.00	5500
UTI	St George	23	N3705.29 W11335.53	2871



INDIAN SPRINGS, NEVADA

TACAN INS Chan 87	APCH CRS 065°	Rwy ldg TDZE 3133	9002 3113
		Arpt Elev 3113	

INDIAN SPRINGS AF AUX (KINS)

▼ * MISSED APPROACH: Straight ahead to INS TACAN, intercept INS R-outbound, cross 17 DME at or above 9500, then direkt KSV TACAN 114

NELLIS CON

CREECH AFB TOWER
118.30 60.60

GND CON

NOT FOR CIVIL USE

FOR USE UNDER BASIC VFR
WEATHER MINIMUMS ONLY

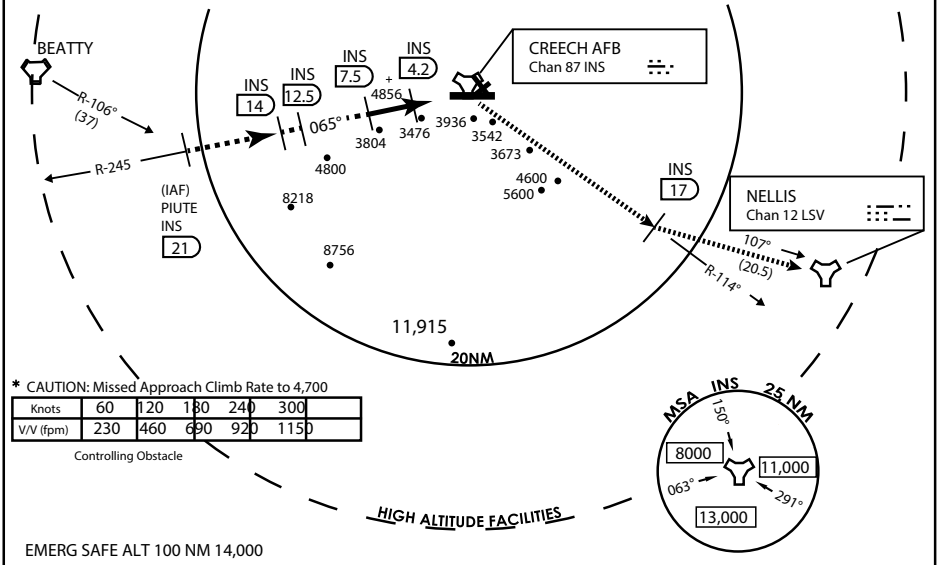
PILOT IS RESPONSIBLE FOR TERRAIN/OBSTACLE AVOIDANCE AND APPROPRIATE VFR CLOUD CLEARANCE FOR ALL

CAUTION: Descent gradients are greater than allowed under standard TERPS criteria and inbound course does not meet straight-in criteria

CAUTION: Final approach course crosses Runway centerline at MIDFIELD. Maneuvering left of course required prior to landing. Do not Maneuver farther north than the INS R- 258

Modified by vJaBoG 66 for use with DCS
NOT FOR REAL LIFE NAVIGATION

Modified by vJaBoG 66 for use with DCS
NOT FOR REAL LIFE NAVIGATION



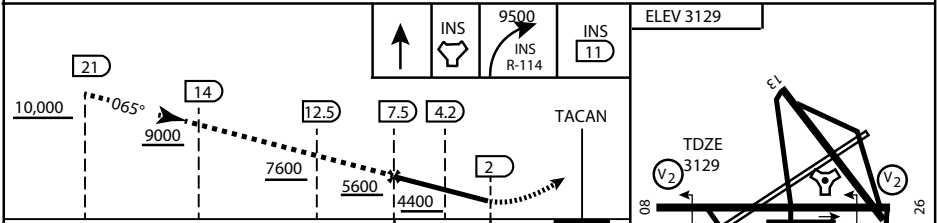
* CAUTION: Missed Approach Climb Rate to 4,700

Knots	60	120	180	240	300
V/V (fpm)	230	460	690	920	1150

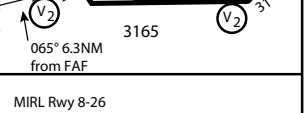
Controlling Obstacle

HIGH ALTITUDE FACILITIES

EMERG SAFE ALT 100 NM 14,000



CATEGORY	A	B	C	D	E
S-8	3760-1 1/2	627 (700-1 1/2)	3760-1 3/4 627 (700-1 3/4)	3760-2 627 (700-2)	3760-2 1/4 627 (700-2 1/4)
CIRCLING	NOT AUTHORIZED				



CITY OF INDIAN, NEVADA

INDIAN SPRINGS AF AUX (KINS)

(FOR DAY VFR USE ONLY)



