

MISSION DATA CARD

OPORD		Callsign		Mission		Date/Time		
3304/2024		Raptor 3		Training		110000OCT24		
Task	LGB Training					Freq		
AO	Range 61					134.5		
Departure				Recovery				
DREAM FOUR				ILS or LOC/DME Z RWY 21L				
#	Callsign		Pilot		IFF	TCN	LSR	NET
-1	Raptor 3-1		Newbie		1631	1Y	1641	

LOADOUT

A/A	2xA120C, 2xA9X				GUN	100% HEI-T	
A/G	2xG12				CHF	120	
POD	HTS, A184, TGP				FLR	0	
TKS	2xFT300				FUEL	100%	

TOLD

	Takeoff	Target	Joker	Bingo	Land
FUEL	11169				

AIRBASES

	Name	TCN	ATIS	GND	TWR	RWY	Elev	ILS
Dep	Nellis AFB	12X	270.1	275.8	327.0	21L	1850	109.1
Arr	Nellis AFB	12X	270.1	275.8	327.0	21L	1850	109.1
Div	Creech AFB	87X	290.45	275.8	360.6			

FLIGHTPLAN

#	Name	Navaid/Coords/DME	ALT	TOT
1	DREAM	N37 10 20.400 W114 59 31.800	15000	
2	HOLD	N37 22 43.501 W115 09 33.506	15000	
3	IP	N37 22 34.126 W115 20 12.896	15000	
4	TRGT	N37 11 35.794 W115 24 48.127	15000	
5	SARAH	N36 36 27 W115 18 01.800	15000	
6	GASS PEAK	N36 24 08.400 W115 10 39.600	9000	
7	SIMNS	N36 17 20.400 W115 10 45	5000	
8	CRAIG	N36 15 15 W115 08 16.200	5000	
9	Nellis AFB	N36 13 32 W115 02 37	1800	

COMMS

Radio	Usage
1	11/3/4/16/11/4/3

NOTES

Dep: Dream 4 -> Dreams

AAR -> Pegasus

HOLDING und Target Aufklärung

Anflug auf Ziel immer als 2Ship, Shooter / Cover

Recov: ISL Z RWY 21

SUPPORT**Tanker**

Callsign	TCN	Freq	ALT	TAS
TEXACO 2	95Y	289.7	FL220	420
Pos	Pegasus.1: CDC 166/102 (N3730 W11440)			

OTHER FLIGHTS

Callsign	Mission	Airframe	Freq	TCN	Grpld	Laser
Raptor 1	Training	2x F-16C	134.0	1/64		162X
AO	Range 61	Task	LGB Training			
Raptor 2	Training	2x F-16C	134.25	1/64		163X
AO	Range 61	Task	LGB Training			
Monster 1	Training	4x A-10C	132.15	1/64	21	161X
AO	Range 62	Task	Illumination Flares			
T-Rex 1	Training	3x A-10C	132.25	1/64	23	159X
AO		Task	Illumination Flares			
Edelweiss 1	Training	2x F/A-18C	264.15	12/75	1	171X
AO	Beatty	Task	BJT Check Ride			
Edelweiss 4	Training	1x F/A-18C	264.45	1/64		174X
AO		Task				
Tiger 1	Training	2x F/A-18C	261.15	1/64	1	155X
AO	Range 74.06 and 74.08	Task	AG Bomb, AAR and Formation			
Raptor 3	Training	3x F-16C	134.5	1/64		164X
AO	Range 61	Task	LGB Training			
Nasty 6	Training	4x AH-64D	133.5	1/64		173X
AO		Task				
Nazgul 6	Training	4x F-15E	262.45	1/64		156X
AO		Task	Formation & AAR			
Beast 4	Training	1x A-10C	132.75	1/64	30	170X
AO	Nellis AFB	Task	PAR			

RADIO CHANNELS

#	Freq	Name
1		Flight/Squadron specific
2	289.4	Nellis Clearance Delivery
3	275.8	Nellis Ground
4	327.0	Nellis Tower
5	385.4	Nellis Approach/Departure West
6	273.55	Nellis Approach/Departure East
7	317.525	Nellis Control -- Sally
8	254.4	Nellis Control-- Lee
9	305.6	SOF Bullseye
10	343.725	EMERGENCY SINGLE FRQ
11	270.1	Nellis ATIS
12	360.625	Creech AFB Tower
13	250.1	HAVE QUICK 13
14	251.1	HAVE QUICK 14
15	252.1	HAVE QUICK 15
16	377.8	Blackjack
17	265.0	KC-135 AR-641A
18	360.8	KC-135MPRS AR-635
19	319.8	KC-135MPRS AR-625
20	300.05	KC-135 AR-231V

RAMROD

0	1	2	3	4	5	6	7	8	9
B	O	Y	F	R	I	E	N	D	S

KTC 1400 C

	0	1	2	3	4	5	6	7	8	9
A	RXSB	CKA	IUP	FJ	MN	TVD	QO	HL	YE	WG
B	FSGW	CHD	LJM	IA	ON	VUE	BK	YP	TR	XQ
C	UFRG	PHB	QCX	JK	SM	OWN	AI	ED	VL	TY
D	QPRL	BCM	ITO	JW	AN	GVY	UD	EK	XS	HF
E	UTNM	AJP	CSK	EL	QW	HBI	VX	FO	YG	DR
F	ECYT	HAN	KPF	IB	MX	DLQ	RS	JG	VW	UO
G	EGWQ	XKJ	UHF	RA	BL	CMV	YN	OT	PD	SI
H	DGKT	IAB	JFE	LS	NC	UWQ	HV	PO	YM	RX
I	GHQA	PIY	KBT	OU	XC	MLW	SJ	FE	VR	DN
J	MHKU	IRF	XVE	BO	WD	NPQ	LC	TJ	AG	SY
K	NLWD	CGQ	TRE	JV	YH	UKP	MI	AB	OX	SF
L	EHBF	LPI	NMK	YG	QO	DXT	AV	UW	RC	SJ
M	HDFT	ONM	QKA	IB	VC	SUX	WG	LE	JP	YR
N	QJBM	IFK	GSP	EN	TO	URL	YV	XW	CD	AH
O	ODRN	TEQ	MJF	AP	BS	LUI	WH	CK	YG	VX
P	IMKT	LWQ	YJR	ES	BG	CAF	DH	ON	UP	XV
Q	KYUR	EPL	OAH	BS	DT	GFI	VN	QX	MW	JC
R	FNLW	HEB	TJM	CO	YX	QSU	KD	GA	VR	PI
S	JKEV	MSY	QPO	TL	NX	CRD	IF	AB	GH	UW
T	BIMU	VPH	QSO	KN	GY	EFT	WL	CD	RA	XJ
U	JHKM	ODC	LTS	ER	QA	BGI	YF	UN	VX	WP
V	ABVC	YDP	LIO	QE	MR	FTJ	NG	SW	KU	XH
W	LVEJ	MQC	PAF	OI	RK	XTN	WH	UB	YS	DG
X	MDUH	LFC	EJY	VR	OP	QAX	NG	KB	TW	IS
Y	UWTO	VCE	BFI	PL	GD	MHX	SR	YQ	KA	NJ

NAVAIDS

Id	Name	Channel	Position	Elevation
BCE	Bryce Canyon	75	N3741.35 W11218.23	9040
BIH	Bishop	33	N3722.62 W11821.99	4114
BLD	Boulder	114	N3559.75 W11451.82	3650
BTY	Beatty	94	N3648.54 W11644.86	2925
CDC	Cedar City	120	N3747.24 W11304.90	5463
DAG	Daggett	79	N3457.75 W11634.69	1760
EED	Needles	99	N3445.96 W11428.43	650
GFS	Goffs	91	N3507.87 W11510.59	4019
GRL	Groom Lake	18	N3713.91 W11548.16	4475
HEC	Hector	74	N3447.83 W11627.78	1854
ILC	Wilson Creek	110	N3815.02 W11423.65	9318
INS	Creech AFB	87	N3635.20 W11540.12	3101
LAS	McCarran Intl	116	N3604.78 W11509.59	2142
LSV	Nellis	12	N3614.68 W11501.50	1864
MLF	Milford	58	N3821.62 W11300.79	4977
MMM	Mormon Mesa	90	N3646.16 W11416.65	2120
MVA	Mina	98	N3833.92 W11801.97	7860
OAL	Coale Dale	124	N3800.20 W11746.23	4800
PGS	Peach Springs	57	N3537.48 W11332.67	4754
TPH	Tonopah Muni	119	N3801.84 W11702.01	5330
TQQ	Silverbow	77	N3748.00 W11647.00	5500
UTI	St George	23	N3705.29 W11335.53	2871



RWY 3L-21R
 PCN 46 R/C/W/T
 RWY 3R-21L
 PCN 51 R/C/W/T
 2017

PAR	RWY	CAT	MINIMA		ARP	ELEV	Scale 1:35'500	
	21L	A B D E	2057 - 0.8 200	(200-0.8/1.6) GS 3°	36° 14.060° N 115° 01.058° W	1857 [ft] 566 [m]	0 300 600 900 1200 1500 [m]	
	3R	A B D E	2057 - 0.8 200	(200-0.8/1.6) GS 3°			0 1000 2000 3000 4000 5000 [ft]	
SRA	21R	A C D E	2257 - 1.2 350	(350-1.2/1.6)				
	3L	A C D E	2257 - 1.2 350	(350-1.2/1.6)				

RWY	TORA	TODA	ASDA	LDA	PSN	THR	ALS
21L	10051 [ft] 3063 [m]	11051 [ft] 3368 [m]	11051 [ft] 3368 [m]	10051 [ft] 3063 [m]	36°14.043' N	115°01.018' W	⊕
3R	10120 [ft] 3084 [m]	11120 [ft] 3398 [m]	11120 [ft] 3398 [m]	10120 [ft] 3084 [m]	36°13.029' N	115°02.038' W	

ATIS	NELLIS GROUND	NELLIS TOWER	NELLIS CONTROL	TACAN	ILS RWY 21L	NELLIS EAST	NELLIS WEST
270.100 MHz	275.800 121.800	327.000 132.55	317.525	LSV 12X	109.10 Mhz	384.400	385.000

DREAM FOUR DEPARTURE DREAM4 | VALID 2014 LAS VEGAS, NEVADA

NELLIS AFB (KLSV)
LAS VEGAS, NEVADA

ATIS
270.100
NELLIS GROUND
275.800
NELLIS TOWER
327.000
NELLIS CONTROL
317.525
NELLIS DEP/APP EAST
384.400
BLACKJACK
377.800

DREAM
N3710.34
W11459.53

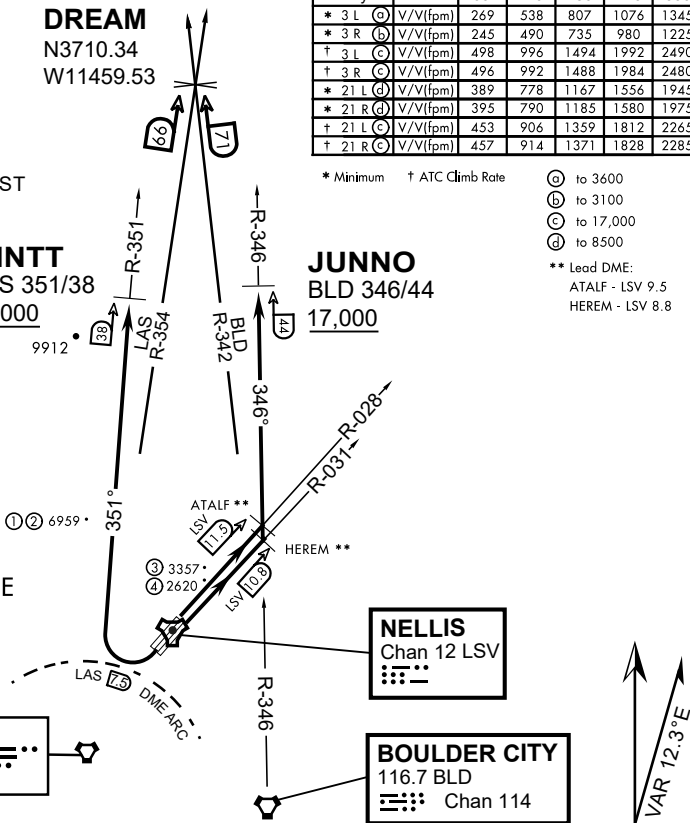
MINTT
LAS 351/38
17,000

Rwy	Knots	60	120	180	240	300	360
* 3 L (A)	V/V(fpm)	269	538	807	1076	1345	1614
* 3 R (B)	V/V(fpm)	245	490	735	980	1225	1470
† 3 L (C)	V/V(fpm)	498	996	1494	1992	2490	2988
† 3 R (C)	V/V(fpm)	496	992	1488	1984	2480	2976
* 21 L (D)	V/V(fpm)	389	778	1167	1556	1945	2334
* 21 R (D)	V/V(fpm)	395	790	1185	1580	1975	2370
† 21 L (C)	V/V(fpm)	453	906	1359	1812	2265	2718
† 21 R (C)	V/V(fpm)	457	914	1371	1828	2285	2742

* Minimum † ATC Climb Rate

- (A) to 3600
 - (B) to 3100
 - (C) to 17,000
 - (D) to 8500
- ** Lead DME:
ATALF - LSV 9.5
HEREM - LSV 8.8

- ① 12.24 NM from Rwy 21R
- ② 12.40 NM from Rwy 21L
- ③ 5.67 NM from Rwy 3L
- ④ 5.85 NM from Rwy 3R



NOT FOR CIVIL USE

CAUTION: If unable to comply with restrictions advise ATC prior to departure.

NELLIS
Chan 12 LSV

BOULDER CITY
116.7 BLD
Chan 114

VAR 12.3°E

DEPARTURE ROUTE DESCRIPTION

TAKE-OFF RWY 3L

- Fly runway heading to intercept the LSV TACAN R-028 then direct ATALF, intercept the BLD VORTAC R-346 then direct JUNNO, cross JUNNO at or above 17,000, then via assigned route.

TAKE-OFF RWY 3R

- Fly runway heading to intercept the LSV TACAN R-031 then direct HEREM, intercept the BLD VORTAC R-346 then direct JUNNO, cross JUNNO at or above 17,000, then via assigned route.

TAKE-OFF RWY 21L/R

- Turn right to intercept LAS VORTAC R-351 outbound. Remain North of LAS 7.5 DME turning Northbound. Intercept LAS R-351 between 5000 and 6000, do not proceed West of LAS R-351. Cross MINTT at or above 17,000, then via assigned route.

NOISE ABATMENT PROCEDURES: Fly acc. Nellis Noise Abatement instructions

DREAM FOUR DEPARTURE (DREAM4 • DREAM)

ILS or LOC/DME Z RWY 21L

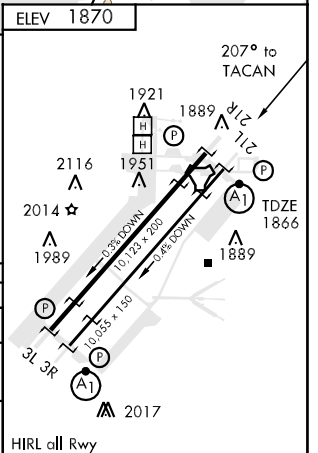
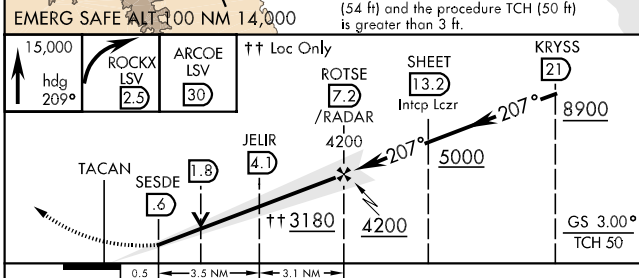
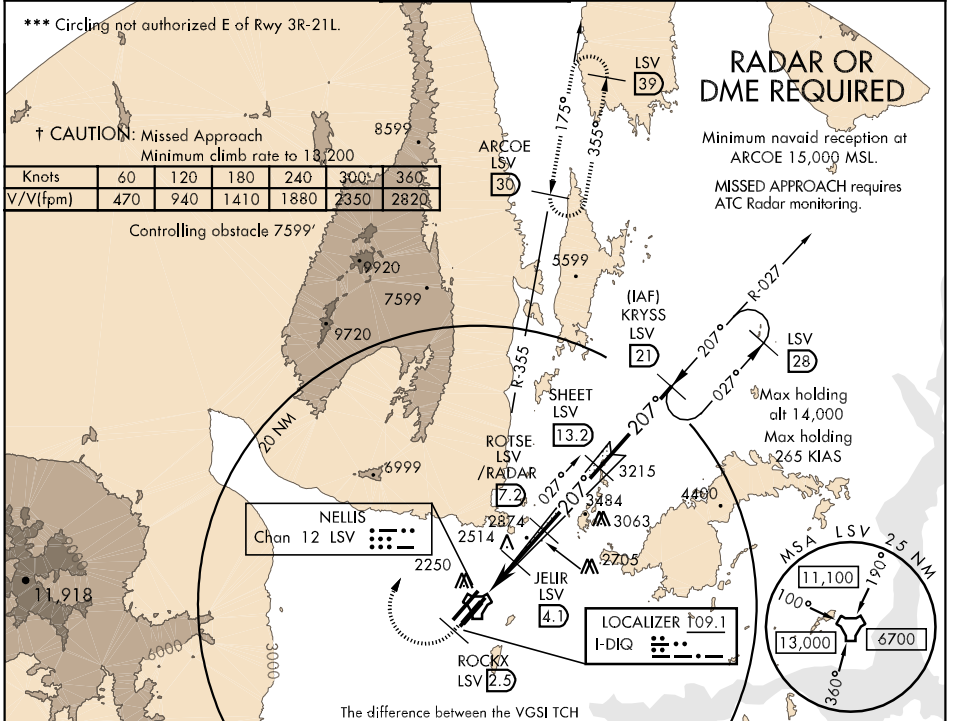
LOC I-DIQ 109.1	APCH CRS 207°	Rwy ldg 10,055 TDZE 1866 Arpt Elev 1870
---------------------------	-------------------------	--

AL-227 [USAF]

NELLIS AFB (KLSV)

▼ * When ALS inop, increase CAT ABCDE RVR to 40, vis to 3/4 mile.
 ** When ALS inop, increase CAT AB RVR to 50, vis to 1 mile, CAT C vis to 1 1/2 miles, CAT D vis to 1 3/4 miles, CAT E vis to 2 miles.
 † MISSED APPROACH: Climb to 15,000, heading 209° to 2.5 DME (ROCKX), then climbing right turn heading 020° to join LSV TACAN R-355 to ARCOE and hold, continue climb in hold to 15,000.

ATIS 270.1	NELLIS APP CON 124.95 273.55	NELLIS TOWER 132.55 327.0	GND CON 121.8 275.8	CLNC DEL 120.9 289.4
----------------------	--	-------------------------------------	-------------------------------	--------------------------------



CATEGORY	A	B	C	D	E
S-ILS 21L *	2066/24		200	(200-1/2)	
S-LOC 21L **	2440/24 574 (600-1/2)	2440/50 574 (600-1)	2440/60 574 (600-1 1/4)	2440-1 1/2 574 (600-1 1/2)	2440-1 1/2 574 (600-1 1/2)
CIRCLING ***	2480-1 610 (700-1)	2680-1 1/4 810 (900-1 1/4)	2680-2 1/4 810 (900-2 1/4)	2680-2 1/2 810 (900-2 1/2)	2940-3 1070 (1100-3)

ILS or LOC/DME Z RWY 21L

SW-4, 23 SEP 2010 to 21 OCT 2010

SW-4, 23 SEP 2010 to 21 OCT 2010



INDIAN SPRINGS, NEVADA

TACAN INS Chan 87	APCH CRS 065°	Rwy Idg 9002
		TDZE 3133
		Arpt Elev 3113

INDIAN SPRINGS AF AUX (KINS)

▼ * MISSED APPROACH: Straight ahead to INS TACAN, intercept INS R-outbound, cross 17 DME at or above 9500, then direkt KSV TACAN 114

NELLIS CON

CREECH AFB TOWER
118.30 60.60

GND CON

NOT FOR CIVIL USE

FOR USE UNDER BASIC VFR
WEATHER MINIMUMS ONLY

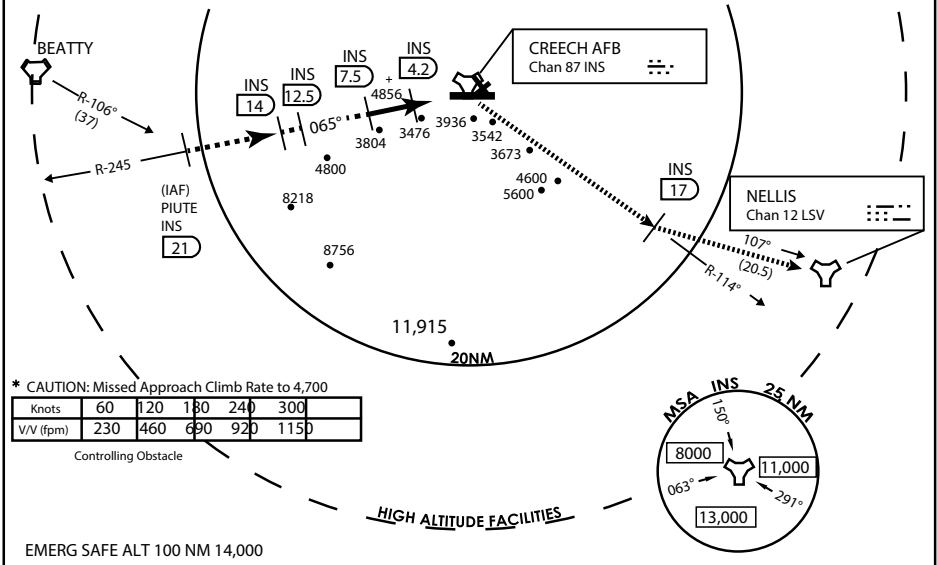
PILOT IS RESPONSIBLE FOR TERRAIN/OBSTACLE
AVOIDANCE AND
APPROPRIATE VFR CLOUD
CLEARANCE FOR ALL

CAUTION: Descent gradients are greater than allowed under standard TERPS criteria and inbound course does not meet straight-in criteria

CAUTION: Final approach course crosses Runway centerline at MIDFIELD. Maneuvering left of course required prior to landing. Do not Maneuver farther north than the INS R- 258

Modified by vJaBoG 66 for use with DCS
NOT FOR REAL LIFE NAVIGATION

Modified by vJaBoG 66 for use with DCS
NOT FOR REAL LIFE NAVIGATION



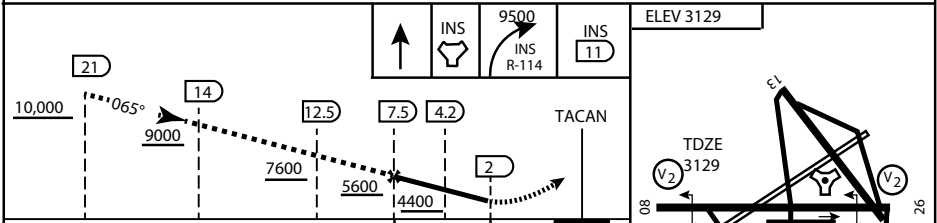
* CAUTION: Missed Approach Climb Rate to 4,700

Knots	60	120	180	240	300
V/V (fpm)	230	460	690	920	1150

Controlling Obstacle

HIGH ALTITUDE FACILITIES

EMERG SAFE ALT 100 NM 14,000



CATEGORY	A	B	C	D	E
S-8	3760-1 1/2	627 (700-1 1/2)	3760-1 3/4 627 (700-1 3/4)	3760-2 627 (700-2)	3760-2 1/4 627 (700-2 1/4)
CIRCLING	NOT AUTHORIZED				

MIRL Rwy 8-26

CITY OF INDIAN, NEVADA

INDIAN SPRINGS AF AUX (KINS)

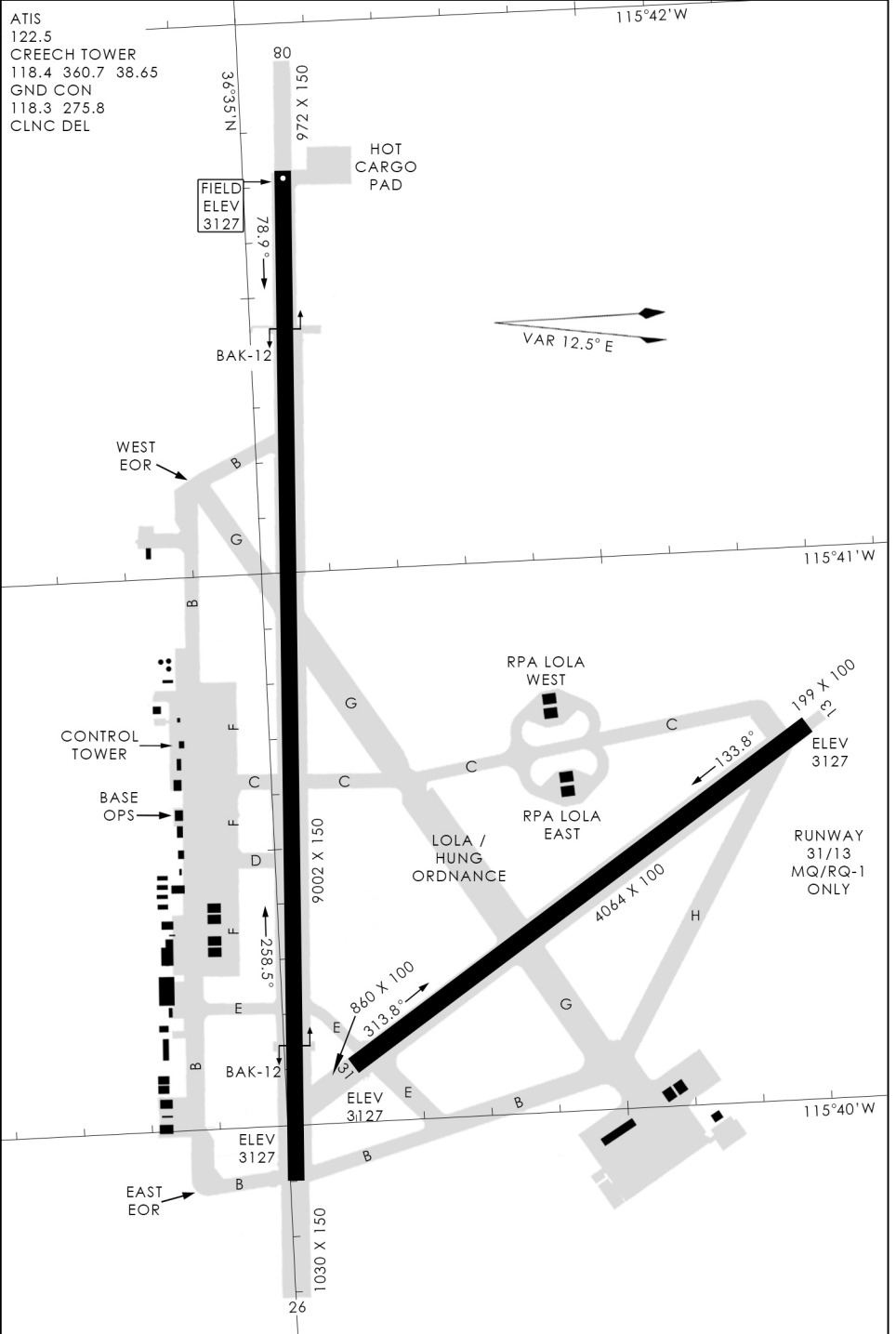
(FOR DAY VFR USE ONLY)



AIRPORT DIAGRAM

476 VFG

CREECH AFB (KINS)
INDIAN SPRINGS, NEVADA



476 VFG JAN 2019

476 VFG JAN 2019

AIRPORT DIAGRAM

INDIAN SPRINGS, NEVADA
CREECH AFB (KINS)