

MISSION DATA CARD

OPORD		Callsign	Mission	Date/Time		
3303/2024		Beast 4	Training	102030OCT24		
Task	PAR				Freq	
AO	Nellis AFB				132.75	
Departure			Recovery			
A10 TAC NORTH			TACAN RWY 21L			
#	Callsign	Pilot	IFF	TCN	LSR	NET
-1	Beast 4-1	Marsy	2141	1Y	1701	30/01

LOADOUT

A/A		GUN	
A/G		CHF	
POD		FLR	
TKS		FUEL	

TOLD

	Takeoff	Target	Joker	Bingo	Land
FUEL	11087				

AIRBASES

	Name	TCN	ATIS	GND	TWR	RWY	Elev	ILS
Dep	Nellis AFB	12X	270.1	275.8	327.0	21L	1850	109.1
Arr	Nellis AFB	12X	270.1	275.8	327.0	21L	1850	109.1

FLIGHTPLAN

#	Name	Navaid/Coords/DME	ALT	TOT
1	APEX	LSV 027/09 (N36 21.580 W114 54.340)		
2	DRY LAKE	LSV 030/15 (N36 27.680 W114 52.211)		
3	KUTME	N36 30.286 W114 44.075	8800	
4	HULPU	N36 24.346 W114 50.729	5000	
5	JENAR	N36 19.887 W114 55.708	4500	
6	JOGEV	N36 17.506 W114 58.360	3180	
7	KITCH	N36 15.200 W115 00.926		

COMMS

Radio	Usage
1	132.75
2	11-3-4-16-11-4-3

NOTES

Mütze bespaßen!

OTHER FLIGHTS

Callsign	Mission	Airframe	Freq	TCN	Grpld	Laser
Raptor 1	Training	2x F-16C	134.0	1/64		162X
AO	Range 61	Task	LGB Training			
Raptor 2	Training	2x F-16C	134.25	1/64		163X
AO	Range 61	Task	LGB Training			
Monster 1	Training	4x A-10C	132.15	1/64	21	161X
AO	Range 62	Task	Illumination Flares			
Edelweiss 3	Training	4x F/A-18C	264.35	1/64		173X
AO		Task	Bewerber Flug			
T-Rex 1	Training	3x A-10C	132.25	1/64	23	159X
AO		Task	Illumination Flares			
Edelweiss 1	Training	2x F/A-18C	264.15	12/75	1	171X
AO	Beatty	Task	BJT Check Ride			
Edelweiss 4	Training	1x F/A-18C	264.45	1/64		174X
AO		Task				
Tiger 1	Training	2x F/A-18C	261.15	1/64	1	155X
AO	Range 74.06 and 74.08	Task	AG Bomb, AAR and Formation			
Raptor 3	Training	3x F-16C	134.5	1/64		164X
AO	Range 61	Task	LGB Training			
Nasty 6	Training	4x AH-64D	133.5	1/64		173X
AO		Task				
Nazgul 6	Training	4x F-15E	262.45	1/64		156X
AO		Task	Formation & AAR			
Raptor 3	Training	3x F-16C	134.5	1/64		164X
AO	Range 61	Task	LGB Training			

RADIO CHANNELS

#	Freq	Name
1		Flight/Squadron specific
2	289.4	Nellis Clearance Delivery
3	275.8	Nellis Ground
4	327.0	Nellis Tower
5	385.4	Nellis Approach/Departure West
6	273.55	Nellis Approach/Departure East
7	317.525	Nellis Control -- Sally
8	254.4	Nellis Control-- Lee
9	305.6	SOF Bullseye
10	343.725	EMERGENCY SINGLE FRQ
11	270.1	Nellis ATIS
12	360.625	Creech AFB Tower
13	250.1	HAVE QUICK 13
14	251.1	HAVE QUICK 14
15	252.1	HAVE QUICK 15
16	377.8	Blackjack
17	265.0	KC-135 AR-641A
18	360.8	KC-135MPRS AR-635
19	319.8	KC-135MPRS AR-625
20	300.05	KC-135 AR-231V

RAMROD

0	1	2	3	4	5	6	7	8	9
B	O	L	S	T	E	R	I	N	G

KTC 1400 C

	0	1	2	3	4	5	6	7	8	9
A	AXHV	SBN	IYU	KP	TC	LQW	MO	EJ	FG	RD
B	OMVP	FNA	XLC	RT	GS	BJI	HD	KU	YW	QE
C	PSOJ	HVC	NEX	KI	UB	DYL	WM	GR	AF	QT
D	RIVM	OWE	UJK	CD	QA	PXL	YB	GF	SN	TH
E	VBKO	RAW	HLD	QE	JS	XCP	FI	MU	TG	YN
F	JRIY	NMU	WLK	AD	PO	CHX	GV	QE	FT	BS
G	SMPD	UTH	LBR	WE	KA	GNC	VQ	OY	JI	FX
H	PQYV	DKB	UXE	TL	MR	CSG	WJ	HA	FO	IN
I	LRUI	ETB	OGW	FN	PQ	CVA	XM	YK	JS	HD
J	VEXH	JAF	GKB	PT	UR	CQI	DY	SM	LO	WN
K	VTKR	YOB	SUP	EW	JX	INC	AM	HL	DG	FQ
L	YIVS	OEK	WNL	XG	TQ	MUH	PC	RB	JA	FD
M	UVIA	PGM	XKF	CL	JO	QNT	ED	RB	SY	HW
N	WFKB	PXM	ULG	CH	JA	EST	OV	ID	RN	QY
O	GPMX	OKY	HNQ	LW	UT	DFV	BJ	CR	EA	SI
P	DLJI	FHM	XVA	SR	EO	BYT	GQ	KP	CU	WN
Q	DONU	THP	FXG	AJ	IK	EWY	BV	QM	SR	LC
R	DXBS	EHN	YPU	CM	IV	KFL	TW	OJ	GR	QA
S	EUDV	LPJ	XFG	OQ	HR	IMT	AB	CS	WY	NK
T	WLHB	NQP	KDV	RY	CT	XGF	AE	IU	SO	MJ
U	CLSF	JHK	BIW	TV	PD	OGA	RE	XM	YQ	UN
V	JHBR	QNP	AWM	GX	VL	TSI	CO	KD	YE	FU
W	WETC	OSI	JUH	KV	DY	GAX	RN	MP	LF	BQ
X	PFRB	QGU	DXL	CT	MY	KSJ	IN	EO	VH	WA
Y	URMH	CIX	NDW	GT	LK	OYS	FQ	JP	VB	EA

NAVAIDS

Id	Name	Channel	Position	Elevation
BCE	Bryce Canyon	75	N3741.35 W11218.23	9040
BIH	Bishop	33	N3722.62 W11821.99	4114
BLD	Boulder	114	N3559.75 W11451.82	3650
BTY	Beatty	94	N3648.54 W11644.86	2925
CDC	Cedar City	120	N3747.24 W11304.90	5463
DAG	Daggett	79	N3457.75 W11634.69	1760
EED	Needles	99	N3445.96 W11428.43	650
GFS	Goffs	91	N3507.87 W11510.59	4019
GRL	Groom Lake	18	N3713.91 W11548.16	4475
HEC	Hector	74	N3447.83 W11627.78	1854
ILC	Wilson Creek	110	N3815.02 W11423.65	9318
INS	Creech AFB	87	N3635.20 W11540.12	3101
LAS	McCarran Intl	116	N3604.78 W11509.59	2142
LSV	Nellis	12	N3614.68 W11501.50	1864
MLF	Milford	58	N3821.62 W11300.79	4977
MMM	Mormon Mesa	90	N3646.16 W11416.65	2120
MVA	Mina	98	N3833.92 W11801.97	7860
OAL	Coale Dale	124	N3800.20 W11746.23	4800
PGS	Peach Springs	57	N3537.48 W11332.67	4754
TPH	Tonopah Muni	119	N3801.84 W11702.01	5330
TQQ	Silverbow	77	N3748.00 W11647.00	5500
UTI	St George	23	N3705.29 W11335.53	2871



RWY 3L-21R
 PCN 46 R/C/W/T
 RWY 3R-21L
 PCN 51 R/C/W/T
 2017

PAR	RWY	CAT	MINIMA	ARP	ELEV	Scale
	21L	A B D E	2057 - 0.8 200 (200-0.8/1.6) GS 3°	36° 14.060° N 115° 01.058° W	1857 [ft] 566 [m]	0 300 600 900 1200 1500 [m] 0 1000 2000 3000 4000 5000 [ft]
	3R	A B D E	2057 - 0.8 200 (200-0.8/1.6) GS 3°			
	21R	A C D E	2257 - 1.2 350 (350-1.2/1.6)			
	3L	A C D E	2257 - 1.2 350 (350-1.2/1.6)			

RWY	TORA	TODA	ASDA	LDA	PSN	THR	ALS
21L	10051 [ft] 3063 [m]	11051 [ft] 3368 [m]	11051 [ft] 3368 [m]	10051 [ft] 3063 [m]	36°14.043' N	115°01.018' W	⊕
3R	10120 [ft] 3084 [m]	11120 [ft] 3398 [m]	11120 [ft] 3398 [m]	10120 [ft] 3084 [m]	36°13.029' N	115°02.038' W	

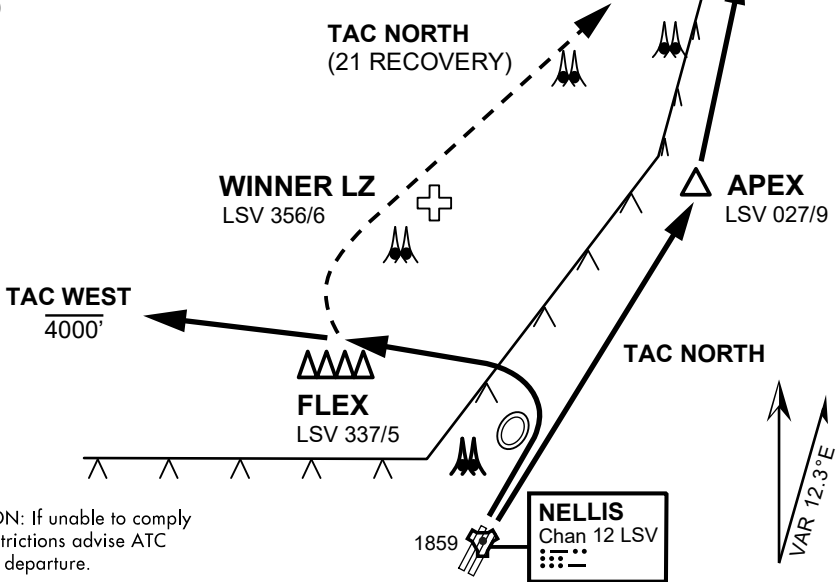
ATIS	NELLIS GROUND	NELLIS TOWER	NELLIS CONTROL	TACAN	ILS RWY 21L	NELLIS EAST	NELLIS WEST
270.100 MHz	275.800 121.800	327.000 132.55	317.525	LSV 12X	109.10 Mhz	384.400	385.000

ATIS
270.100
NELLIS GROUND
275.800
NELLIS TOWER
327.000
NELLIS CONTROL
317.525
NELLIS DEP/APP EAST
384.400
BLACKJACK
377.800

VMC ONLY

PILOT RESPONSIBLE FOR
TERRAIN AVOIDANCE

DRY LAKE
LSV 017/15



CAUTION: If unable to comply with restrictions advise ATC prior to departure.

NELLIS
Chan 12 LSV

VAR 12.3°E



DEPARTURE ROUTE DESCRIPTION

- Tac North / Tac West departures only flown during daylight from RWY 03
- Use caution for helicopters operating 3 Nm NE of FLEX (Winner LZ).
- Flights will remain at 500' AGL until deconflicted with helicopter traffic.
- Upon reaching FLEX or Dry Lake maintain VFR, remain clear of Class B airspace, and switch frequency to coordinate for range entry.

TAC NORTH

- Proceed direct APEX then direct Dry Lake. Report "APEX" informing ATC flight will clear Class B in 3Nm enroute to Dry Lake.
- For opposite direction takeoffs when RWY 21 is the active, proceed to FLEX then to Dry Lake.
- Report "FLEX" to inform ATC flight is clear of Class B airspace. Use caution for helicopter training.

TAC WEST:

- Proceed to FLEX. Report "FLEX" to inform ATC flight is clear of Class B airspace. Remain below 4000' MSL until north of Gass Peak.

LAS VEGAS, NEVADA

TACAN RWY 21L

TACAN LSV Chan 12	APCH CRS 207°	Rwy Idg 10,055 TDZE 1866 Arprt Elev 1870
----------------------	------------------	--

AL-227 [USAF]

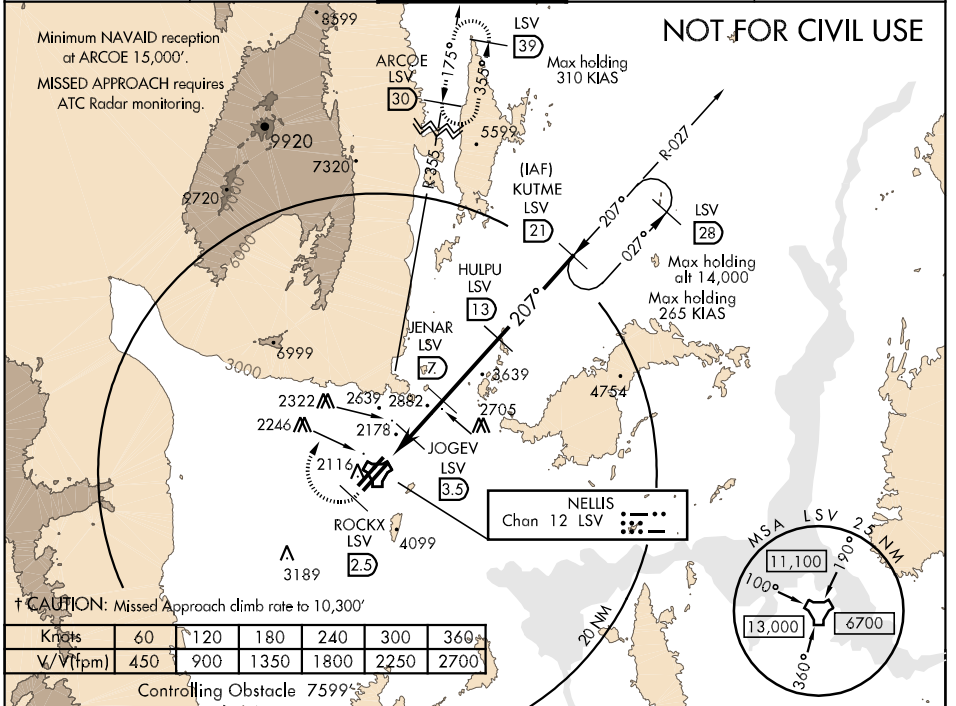
NELLIS AFB (KLSV)

▼ * When ALS inop, increase CAT AB RVR to 50, vis to 1 mile, CAT C vis to 1¼ miles, CAT D vis to 2 miles, CAT E vis to 2½ miles.
** Circling not authorized E of Rwy 3R-21L.



† MISSED APPROACH: Climb to 15,000, heading 209° to 2.5 DME (ROCKX), then climbing right turn heading 020° to join LSV TACAN R-355 to ARCOE and hold, continue climb in hold to 15,000.

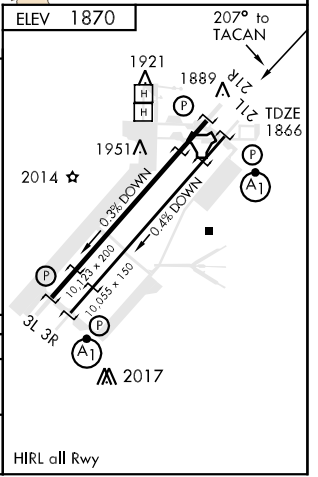
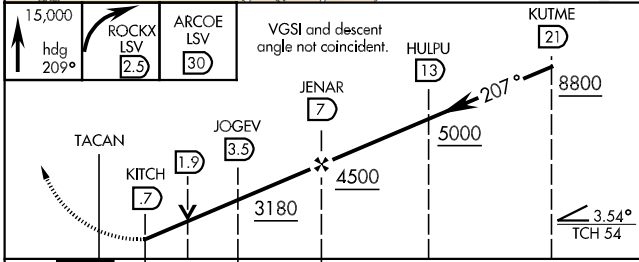
ATIS 270.1	NELLIS APP CON 124.95 273.55	NELLIS TOWER 132.55 327.0	GND CON 121.8 275.8	CINC DEL 120.9 289.4
---------------	---------------------------------	------------------------------	------------------------	-------------------------



† CAUTION: Missed Approach climb rate to 10,300'

Knots	60	120	180	240	300	360
∇/∇(fpm)	450	900	1350	1800	2250	2700

EMERG SAFE ALT 100 NM 14,000



CATEGORY	A	B	C	D	E
S-21L *	2480/24 614 (700-½)		2480/60 614 (700-1¼)	2480-1½ 614 (700-1½)	2480-1¾ 614 (700-1¾)
CIRCLING **	2480-1 610 (700-1)	2680-1¼ 810 (900-1¼)	2680-2¼ 810 (900-2¼)	2680-2½ 810 (900-2½)	2940-3 1070(1100-3)

LAS VEGAS, NEVADA
Amdt 3 10266

36°14'N-115°02'W

NELLIS AFB (KLSV)

TACAN RWY 21L

SW-4, 23 SEP 2010 to 21 OCT 2010

SW-4, 23 SEP 2010 to 21 OCT 2010