

MISSION DATA CARD

OPORD		Callsign		Mission		Date/Time	
3292/2024		Edelweiss 3		Training		101637OCT24	
Task	Bewerber Flug					Freq	
AO						264.35	
Departure				Recovery			
FYTTR LOW				STRYK			
#	Callsign	Pilot		IFF	TCN	LSR	NET
-1	Edelweiss 3-1	Kosmoss		1731	1Y	1731	
-2	Edelweiss 3-2	Coach		1732	64Y	1732	

LOADOUT

A/A	2xA9X				GUN	100% HEI-T	
A/G					CHF	60	
POD					FLR	60	
TKS	FPU-8A				FUEL	100%	

TOLD

	Takeoff	Target	Joker	Bingo	Land
FUEL	13047			4000	

AIRBASES

	Name	TCN	ATIS	GND	TWR	RWY	Elev	ILS
Dep	Nellis AFB	12X	270.1	275.8	327.0	21L	1850	109.1
Arr	Nellis AFB	12X	270.1	275.8	327.0	21L	1850	109.1
Div	Creech AFB	87X	290.45	275.8	360.6			

FLIGHTPLAN

#	Name	Navaid/Coords/DME	ALT	TOT
1	FYTTR	LSV 269/33 (N36 21.440 W115 41.470)	14000	
2	STRYK	LSV 282/26 (N36 25.620 W115 30.700)	9500	

COMMS

Radio	Usage
1	#11(ATIS) / #4(Nellis Tower) / #16(Black Jack) / #4(Nellis Tower)
2	264.35
3	Mids A 24
4	Mids B 44

OTHER FLIGHTS

Callsign	Mission	Airframe	Freq	TCN	Grpld	Laser
Raptor 1	Training	2x F-16C	134.0	1/64		162X
AO	Range 61	Task	LGB Training			
Raptor 2	Training	2x F-16C	134.25	1/64		163X
AO	Range 61	Task	LGB Training			
Monster 1	Training	4x A-10C	132.15	1/64	21	161X
AO	Range 62	Task	Illumination Flares			
T-Rex 1	Training	3x A-10C	132.25	1/64	23	159X
AO		Task	Illumination Flares			
Edelweiss 1	Training	2x F/A-18C	264.15	12/75	1	171X
AO	Beatty	Task	BJT Check Ride			
Edelweiss 4	Training	1x F/A-18C	264.45	1/64		174X
AO		Task				
Tiger 1	Training	2x F/A-18C	261.15	1/64	1	155X
AO	Range 74.06 and 74.08	Task	AG Bomb, AAR and Formation			
Raptor 3	Training	3x F-16C	134.5	1/64		164X
AO	Range 61	Task	LGB Training			
Nasty 6	Training	4x AH-64D	133.5	1/64		173X
AO		Task				
Nazgul 6	Training	4x F-15E	262.45	1/64		156X
AO		Task	Formation & AAR			
Beast 4	Training	1x A-10C	132.75	1/64	30	170X
AO	Nellis AFB	Task	PAR			

RADIO CHANNELS

#	Freq	Name
1		Flight/Squadron specific
2	289.4	Nellis Clearance Delivery
3	275.8	Nellis Ground
4	327.0	Nellis Tower
5	385.4	Nellis Approach/Departure West
6	273.55	Nellis Approach/Departure East
7	317.525	Nellis Control -- Sally
8	254.4	Nellis Control-- Lee
9	305.6	SOF Bullseye
10	343.725	EMERGENCY SINGLE FRQ
11	270.1	Nellis ATIS
12	360.625	Creech AFB Tower
13	250.1	HAVE QUICK 13
14	251.1	HAVE QUICK 14
15	252.1	HAVE QUICK 15
16	377.8	Blackjack
17	265.0	KC-135 AR-641A
18	360.8	KC-135MPRS AR-635
19	319.8	KC-135MPRS AR-625
20	300.05	KC-135 AR-231V

RAMROD

0	1	2	3	4	5	6	7	8	9
B	O	L	S	T	E	R	I	N	G

KTC 1400 C

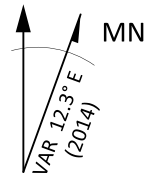
	0	1	2	3	4	5	6	7	8	9
A	AXHV	SBN	IYU	KP	TC	LQW	MO	EJ	FG	RD
B	OMVP	FNA	XLC	RT	GS	BJI	HD	KU	YW	QE
C	PSOJ	HVC	NEX	KI	UB	DYL	WM	GR	AF	QT
D	RIVM	OWE	UJK	CD	QA	PXL	YB	GF	SN	TH
E	VBKO	RAW	HLD	QE	JS	XCP	FI	MU	TG	YN
F	JRIY	NMU	WLK	AD	PO	CHX	GV	QE	FT	BS
G	SMPD	UTH	LBR	WE	KA	GNC	VQ	OY	JI	FX
H	PQYV	DKB	UXE	TL	MR	CSG	WJ	HA	FO	IN
I	LRUI	ETB	OGW	FN	PQ	CVA	XM	YK	JS	HD
J	VEXH	JAF	GKB	PT	UR	CQI	DY	SM	LO	WN
K	VTKR	YOB	SUP	EW	JX	INC	AM	HL	DG	FQ
L	YIVS	OEK	WNL	XG	TQ	MUH	PC	RB	JA	FD
M	UVIA	PGM	XKF	CL	JO	QNT	ED	RB	SY	HW
N	WFKB	PXM	ULG	CH	JA	EST	OV	ID	RN	QY
O	GPMX	OKY	HNQ	LW	UT	DFV	BJ	CR	EA	SI
P	DLJI	FHM	XVA	SR	EO	BYT	GQ	KP	CU	WN
Q	DONU	THP	FXG	AJ	IK	EWY	BV	QM	SR	LC
R	DXBS	EHN	YPU	CM	IV	KFL	TW	OJ	GR	QA
S	EUDV	LPJ	XFG	OQ	HR	IMT	AB	CS	WY	NK
T	WLHB	NQP	KDV	RY	CT	XGF	AE	IU	SO	MJ
U	CLSF	JHK	BIW	TV	PD	OGA	RE	XM	YQ	UN
V	JHBR	QNP	AWM	GX	VL	TSI	CO	KD	YE	FU
W	WETC	OSI	JUH	KV	DY	GAX	RN	MP	LF	BQ
X	PFRB	QGU	DXL	CT	MY	KSJ	IN	EO	VH	WA
Y	URMH	CIX	NDW	GT	LK	OYS	FQ	JP	VB	EA

NAVAIDS

Id	Name	Channel	Position	Elevation
BCE	Bryce Canyon	75	N3741.35 W11218.23	9040
BIH	Bishop	33	N3722.62 W11821.99	4114
BLD	Boulder	114	N3559.75 W11451.82	3650
BTY	Beatty	94	N3648.54 W11644.86	2925
CDC	Cedar City	120	N3747.24 W11304.90	5463
DAG	Daggett	79	N3457.75 W11634.69	1760
EED	Needles	99	N3445.96 W11428.43	650
GFS	Goffs	91	N3507.87 W11510.59	4019
GRL	Groom Lake	18	N3713.91 W11548.16	4475
HEC	Hector	74	N3447.83 W11627.78	1854
ILC	Wilson Creek	110	N3815.02 W11423.65	9318
INS	Creech AFB	87	N3635.20 W11540.12	3101
LAS	McCarran Intl	116	N3604.78 W11509.59	2142
LSV	Nellis	12	N3614.68 W11501.50	1864
MLF	Milford	58	N3821.62 W11300.79	4977
MMM	Mormon Mesa	90	N3646.16 W11416.65	2120
MVA	Mina	98	N3833.92 W11801.97	7860
OAL	Coale Dale	124	N3800.20 W11746.23	4800
PGS	Peach Springs	57	N3537.48 W11332.67	4754
TPH	Tonopah Muni	119	N3801.84 W11702.01	5330
TQQ	Silverbow	77	N3748.00 W11647.00	5500
UTI	St George	23	N3705.29 W11335.53	2871



RWY 3L-21R
 PCN 46 R/C/W/T
 RWY 3R-21L
 PCN 51 R/C/W/T
 2017



PAR	RWY	CAT	MINIMA		ARP	ELEV	Scale 1:35'500	
	21L	A B D E	2057 - 0.8 200 (200-0.8/1.6)	GS 3°	36° 14.060° N 115° 01.058° W	1857 [ft] 566 [m]	0 300 600 900 1200 1500 [m]	
	3R	A B D E	2057 - 0.8 200 (200-0.8/1.6)	GS 3°			0 1000 2000 3000 4000 5000 [ft]	
SRA	21R	A C D E	2257 - 1.2 350 (350-1.2/1.6)					
	3L	A C D E	2257 - 1.2 350 (350-1.2/1.6)					

RWY	TORA	TODA	ASDA	LDA	PSN	THR	ALS
21L	10051 [ft] 3063 [m]	11051 [ft] 3368 [m]	11051 [ft] 3368 [m]	10051 [ft] 3063 [m]	36°14.043' N	115°01.018' W	⊕
3R	10120 [ft] 3084 [m]	11120 [ft] 3398 [m]	11120 [ft] 3398 [m]	10120 [ft] 3084 [m]	36°13.029' N	115°02.038' W	

ATIS	NELLIS GROUND	NELLIS TOWER	NELLIS CONTROL	TACAN	ILS RWY 21L	NELLIS EAST	NELLIS WEST
270.100 MHz	275.800 121.800	327.000 132.55	317.525	LSV 12X	109.10 Mhz	384.400	385.000

ATIS
270.100
NELLIS GROUND
275.800
NELLIS TOWER
327.000
NELLIS CONTROL
317.525
NELLIS DEP/APP EAST
384.400
BLACKJACK
377.800

CAUTION: If unable to comply
with restrictions advise ATC
prior to departure.



VMC ONLY

PILOT RESPONSIBLE FOR TERRAIN AVOIDANCE

① 4 NM from RWY 3L/R

BEATTY
Chan 94 BTY

RANGE 64/65
RANGE 63

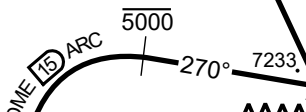
TUCKY

R-2508

LSV R-269

FYTTR
N3621.44
W11541.47

BTY R-105



FLEX
LSV 337/5

NELLIS
Chan 12 LSV

4131'

DEPARTURE ROUTE DESCRIPTION

TAKEOFF RWY 3L/R:

- Remain below 3,000' MSL until north of Race Track and turned westbound.
- Turn left within 4NM of Nellis direct FLEX. Fly north of FLEX and turn left heading 270°.
- Intercept LSV R-255 DME ARC at or below 5,000' MSL.
- ARC south, intercept LSV R-269 outbound. Maintain VFR.

TAKEOFF RWY 21L/21R:

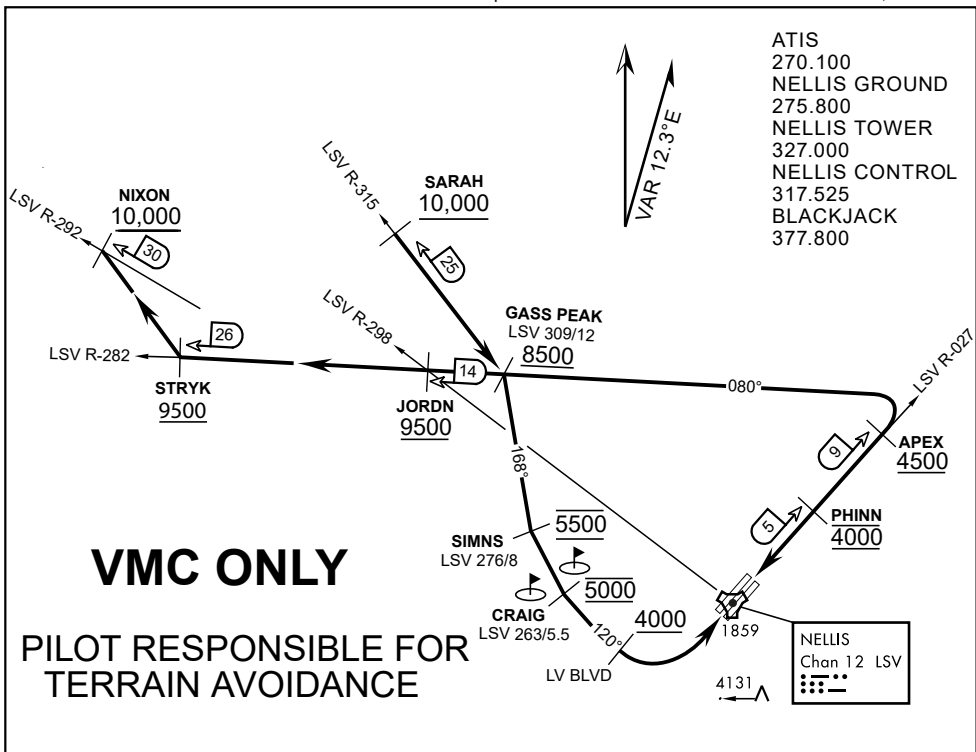
- Follow Noise Abatement Procedures.
- Fly runway heading until past Golf Course, turn right heading 300°.
- Cross LSV R-255 between 5,000' and 6,000' , intercept and proceed outbound on the LSV R-269.Recommend climb to 8,500' MSL or appropriate VFR altitude for overflight of North Las Vegas Training Area. Fly routing for appr. mission/transition.

TRANSITIONS:

- R-4806:** Turn right at the LSV 269/20 direct to assigned ranges.
- BEATTY:** Turn right at FYTTR direct BTY via the BTY R-105
- R-2508:** Turn right at the FYTTR, intercept the BTY 105/30, direct TUCKY, then direct R-2508

FYTTR DEPARTURE AND TRANSITIONS (FYTTR LOW)

v.15 13NOV20 NTR NAV CHART



ATIS
 270.100
 NELLIS GROUND
 275.800
 NELLIS TOWER
 327.000
 NELLIS CONTROL
 317.525
 BLACKJACK
 377.800

VMC ONLY

PILOT RESPONSIBLE FOR TERRAIN AVOIDANCE

APPROACH ROUTE DESCRIPTION

APPROACH RWY 3L/R

Cross STRYK at or above 9,500' MSL, proceed direct GASS PEAK. Cross JORDN at or above 9,500' MSL, cross GASS PEAK at or above 8,500' MSL. Proceed direct SIMNS and cross at 5,500' MSL. Cross Las Vegas Blvd at or above 4,000' MSL then to 3,500' MSL for Initial. Remain within 4 DME if LSV on turn to final.

VFR STRAIGHT-IN RWY 3L/R

Depart CRAIG & descend to be at 3,000' MSL by Las Vegas Blvd. Do not descend below 3,000' MSL until within 5 DME of LSV or 4 NM of the runway on turn to final.

APPROACH RWY 21L/R

Cross STRYK at or above 9,500' MSL, proceed direct GASS PEAK. Cross JORDN at or above 9,500' MSL, cross GASS PEAK at or above 8,500' MSL. Cross APEX at or above 4,500' MSL then direct 5NM initial. Descend to cross PHINN at 4,000' MSL, Inside 5 NM descend to 3,500' MSL.

VFR STRAIGHT-IN RWY 21L/R

Cross APEX at 4,000' MSL. Descend to be at 3,000' MSL at PHINN. Descend to 3,000' MSL at LSV 027/5.

RANGE 63B EXIT

SOUTH: Via NIXON at or above 10,000' MSL, then direct STRYK.

EAST: Via SARAH at or above 10,000' MSL, then direct GASS PEAK.



INDIAN SPRINGS, NEVADA

TACAN INS Chan 87	APCH CRS 065°	Rwy ldg TDZE 3133	9002 3113
		Arpt Elev 3113	

INDIAN SPRINGS AF AUX (KINS)

▼ * MISSED APPROACH: Straight ahead to INS TACAN, intercept INS R-outbound, cross 17 DME at or above 9500, then direkt KSV TACAN 114

NELLIS CON

CREECH AFB TOWER
118.30 60.60

GND CON

NOT FOR CIVIL USE

FOR USE UNDER BASIC VFR WEATHER MINIMUMS ONLY

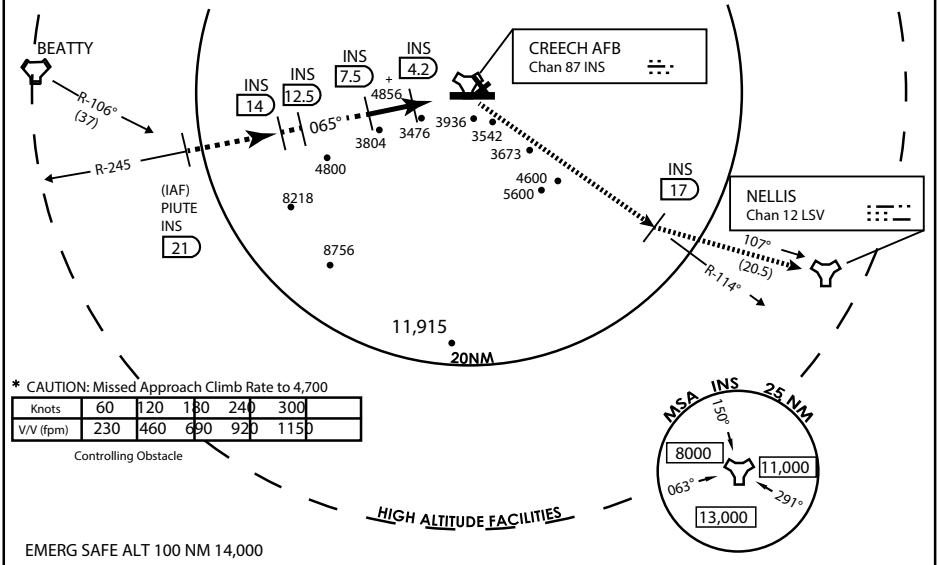
PILOT IS RESPONSIBLE FOR TERRAIN/OBSTACLE AVOIDANCE AND APPROPRIATE VFR CLOUD CLEARANCE FOR ALL

CAUTION: Descent gradients are greater than allowed under standard TERPS criteria and inbound course does not meet straight-in criteria

CAUTION: Final approach course crosses Runway centerline at MIDFIELD. Maneuvering left of course required prior to landing. Do not Maneuver farther north than the INS R- 258

Modified by viaBog 66 for use with DCS
NOT FOR REAL LIFE NAVIGATION

Modified by viaBog 66 for use with DCS
NOT FOR REAL LIFE NAVIGATION



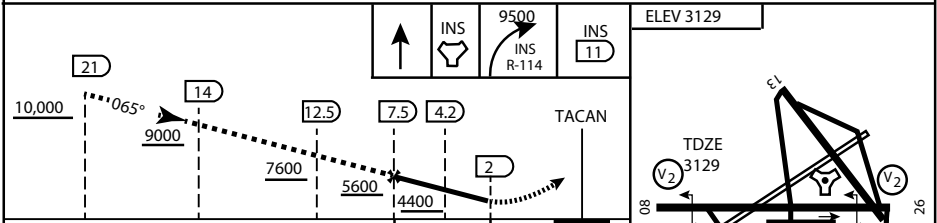
* CAUTION: Missed Approach Climb Rate to 4,700

Knots	60	120	180	240	300
V/V (fpm)	230	460	690	920	1150

Controlling Obstacle

HIGH ALTITUDE FACILITIES

EMERG SAFE ALT 100 NM 14,000



CATEGORY	A	B	C	D	E
S-8	3760-1 1/2	627 (700-1 1/2)	3760-1 3/4 627 (700-1 3/4)	3760-2 627 (700-2)	3760-2 1/4 627 (700-2 1/4)
CIRCLING	NOT AUTHORIZED				

MIRL Rwy 8-26

CITY OF INDIAN, NEVADA

INDIAN SPRINGS AF AUX (KINS)

(FOR DAY VFR USE ONLY)



AIRPORT DIAGRAM

476 VFG

CREECH AFB (KINS)
INDIAN SPRINGS, NEVADA

ATIS
122.5
CREECH TOWER
118.4 360.7 38.65
GND CON
118.3 275.8
CLNC DEL

115°42'W

FIELD
ELEV
3127

80

972 X 150

HOT
CARGO
PAD

78.9°

BAK-12

VAR 12.5° E

WEST
EOR

115°41'W

476 VFG JAN 2019

476 VFG JAN 2019

CONTROL
TOWER

BASE
OPS

RPA LOLA
WEST

RPA LOLA
EAST

LOLA /
HUNG
ORDNANCE

199 X 100
ELEV
3127

RUNWAY
31/13
MQ/RQ-1
ONLY

9002 X 150

258.5°

860 X 100

313.8°

4064 X 100

115°40'W

BAK-12

ELEV
3127

EAST
EOR

1030 X 150

26

AIRPORT DIAGRAM

INDIAN SPRINGS, NEVADA
CREECH AFB (KINS)