

**MISSION DATA CARD**

OPORD		Callsign		Mission		Date/Time	
3283/2024		Jedi* 5		Training		072000OCT24	
Task							Freq
AO							133.5
Departure				Recovery			
HELICOPTER DEP				HELICOPTER ARR			
#	Callsign	Pilot	IFF	TCN	LSR	NET	
-1	Jedi* 5-1	Laud	1701	1Y	1711		
-2	Jedi* 5-2	Warblade	1702	64Y	1712		
-3	Jedi* 5-3	Remotex	1703	64X	1713		

**LOADOUT**

A/A					GUN	50% HEDP
A/G	8xAGM114L				CHF	30
POD					FLR	60
TKS					FUEL	100%

**TOLD**

	Takeoff	Target	Joker	Bingo	Land
FUEL	2513				

**AIRBASES**

	Name	TCN	ATIS	GND	TWR	RWY	Elev	ILS
Dep	Nellis AFB	12X	270.1	275.8	327.0	21L	1850	109.1
Arr	Nellis AFB	12X	270.1	275.8	327.0	21L	1850	109.1
Div	Creech AFB	87X	290.45	275.8	360.6			

**FLIGHTPLAN**

#	Name	Navaid/Coords/DME	ALT	TOT
1	SOUTH GAP	LSV 160/2.9 (N36 11.94 W115 00.40)		
2	WEST FLEX	LSV 307/6.5 (N36 18.64 W115 08)		
3	Creech AFB	N36 35.20 W115 40.12		

**COMMS**

Radio	Usage
1	133.5
2	327 / 377.8
3	35.35

## OTHER FLIGHTS

Callsign	Mission	Airframe	Freq	TCN	Grpld	Laser
Edelweiss 6	Training	2x F/A-18C	264.35	1/64		173X
AO	RANGE 64C	Task	Refuelling, Patterns, Bomb Delivery R64C			
T-Rex 2	Training	3x A-10C	132.25	1/64	25	165X
AO	R65C	Task	Sensors Switchology			
Monster 1	Training	3x A-10C	132.15	1/64	21	161X
AO	R65C	Task	Sensors Switchology			
Edelweiss 1	Training	1x F/A-18C	264.15	12/75	1	171X
AO		Task	Departure & Recovery Training, BFT Maneuvers, Overhead Breaks			
Edelweiss 4	Training	1x F/A-18C	264.45	1/64		174X
AO		Task				
Edelweiss 2	Training	4x F-16C	134.5	1/64		172X
AO	East NTTR	Task	TacForm AAR			
Edelweiss 2	Training	1x F/A-18C	264.45	1/64		148X
AO	BEATTY	Task	BJT Training			
Nazgul 6	Training	4x F-15E	262.45	1/64		156X
AO		Task				
Raptor 1	Training	4x F-16C	134.0	1/64		172X
AO	East NTTR	Task	TacForm AAR			

**RADIO CHANNELS**

#	Freq	Name
1		Flight/Squadron specific
2	289.4	Nellis Clearance Delivery
3	275.8	Nellis Ground
4	327.0	Nellis Tower
5	385.4	Nellis Approach/Departure West
6	273.55	Nellis Approach/Departure East
7	317.525	Nellis Control -- Sally
8	254.4	Nellis Control-- Lee
9	305.6	SOF Bullseye
10	343.725	EMERGENCY SINGLE FRQ
11	270.1	Nellis ATIS
12	360.625	Creech AFB Tower
13	250.1	HAVE QUICK 13
14	251.1	HAVE QUICK 14
15	252.1	HAVE QUICK 15
16	377.8	Blackjack
17	265.0	KC-135 AR-641A
18	360.8	KC-135MPRS AR-635
19	319.8	KC-135MPRS AR-625
20	300.05	KC-135 AR-231V

**RAMROD**

0	1	2	3	4	5	6	7	8	9
R	E	D	O	U	B	L	I	N	G

**KTC 1400 C**

	0	1	2	3	4	5	6	7	8	9
A	EOVW	UYN	SJA	PL	QD	HKI	FT	CG	MB	RX
B	KIOU	BNT	AMX	ER	HV	CPG	FS	JW	QL	DY
C	VHSB	GOC	UIJ	TF	WD	LAE	YM	XN	KP	RQ
D	TSDG	BHM	LRC	OK	VF	XPA	EQ	JI	WY	UN
E	YVQK	GPM	RDC	JN	HS	EAL	BW	TX	IU	FO
F	CYBK	SDG	OUR	ET	AI	JLP	HW	NX	QF	VM
G	XMEG	CQW	SIU	FB	PN	KLT	OJ	AY	VR	HD
H	FDHW	ITA	KNJ	ER	PQ	SCX	LY	BU	OV	MG
I	KQNT	EHV	GCB	UD	WY	MPL	IO	SR	AX	FJ
J	XGOL	EMW	YKT	QH	JN	VPS	IF	AC	RB	UD
K	IJPT	MUQ	VLK	SX	EY	AWH	NR	OB	GC	FD
L	LSJV	DOX	YNE	BC	AW	HMI	KT	FP	UG	QR
M	RHLM	OIC	JYQ	DB	VA	EWT	GX	FS	PK	UN
N	UFTN	VCO	ESW	BD	IY	KRA	HG	JX	PQ	LM
O	EQFN	YRA	BSK	VT	WI	XLJ	GH	PC	DO	UM
P	YSGW	VML	IHK	XP	ED	QOR	NB	UF	TJ	CA
Q	LFUX	OIH	VPY	MW	ET	GBK	SJ	CD	NA	RQ
R	LGXE	NVC	BJM	YP	OU	RSQ	FT	WH	KD	IA
S	BCTJ	RGK	OES	QM	YI	PDL	WX	VN	FU	HA
T	RKIH	VEU	PFW	TB	LY	NDQ	AX	OC	GS	JM
U	LRKV	HBC	OIQ	WD	FN	UMS	GP	YA	JE	TX
V	WYEI	XBT	OFU	KJ	MR	CDN	HA	VL	SQ	GP
W	VABD	IGR	CPS	EH	JW	TFK	LN	XQ	UY	MO
X	IBMK	GJY	UDR	LE	HQ	ATN	OC	WS	FV	PX
Y	RKEM	TIH	DPQ	FO	AJ	NGS	WC	LX	VB	YU

**NAVAIDS**

<b>Id</b>	<b>Name</b>	<b>Channel</b>	<b>Position</b>	<b>Elevation</b>
BCE	Bryce Canyon	75	N3741.35 W11218.23	9040
BIH	Bishop	33	N3722.62 W11821.99	4114
BLD	Boulder	114	N3559.75 W11451.82	3650
BTY	Beatty	94	N3648.54 W11644.86	2925
CDC	Cedar City	120	N3747.24 W11304.90	5463
DAG	Daggett	79	N3457.75 W11634.69	1760
EED	Needles	99	N3445.96 W11428.43	650
GFS	Goffs	91	N3507.87 W11510.59	4019
GRL	Groom Lake	18	N3713.91 W11548.16	4475
HEC	Hector	74	N3447.83 W11627.78	1854
ILC	Wilson Creek	110	N3815.02 W11423.65	9318
INS	Creech AFB	87	N3635.20 W11540.12	3101
LAS	McCarran Intl	116	N3604.78 W11509.59	2142
LSV	Nellis	12	N3614.68 W11501.50	1864
MLF	Milford	58	N3821.62 W11300.79	4977
MMM	Mormon Mesa	90	N3646.16 W11416.65	2120
MVA	Mina	98	N3833.92 W11801.97	7860
OAL	Coale Dale	124	N3800.20 W11746.23	4800
PGS	Peach Springs	57	N3537.48 W11332.67	4754
TPH	Tonopah Muni	119	N3801.84 W11702.01	5330
TQQ	Silverbow	77	N3748.00 W11647.00	5500
UTI	St George	23	N3705.29 W11335.53	2871



RWY 3L-21R  
 PCN 46 R/C/W/T  
 RWY 3R-21L  
 PCN 51 R/C/W/T  
 2017

PAR	RWY	CAT	MINIMA		ARP	ELEV	Scale 1:35'500	
	21L	A B D E	2057 - 0.8 200	(200-0.8/1.6) GS 3°	36° 14.060° N 115° 01.058° W	1857 [ft] 566 [m]	0 300 600 900 1200 1500 [m]	
	3R	A B D E	2057 - 0.8 200	(200-0.8/1.6) GS 3°			0 1000 2000 3000 4000 5000 [ft]	
SRA	21R	A C D E	2257 - 1.2 350	(350-1.2/1.6)				
	3L	A C D E	2257 - 1.2 350	(350-1.2/1.6)				

RWY	TORA	TODA	ASDA	LDA	PSN	THR	ALS
21L	10051 [ft] 3063 [m]	11051 [ft] 3368 [m]	11051 [ft] 3368 [m]	10051 [ft] 3063 [m]	36°14.043' N	115°01.018' W	⊕
3R	10120 [ft] 3084 [m]	11120 [ft] 3398 [m]	11120 [ft] 3398 [m]	10120 [ft] 3084 [m]	36°13.029' N	115°02.038' W	

ATIS	NELLIS GROUND	NELLIS TOWER	NELLIS CONTROL	TACAN	ILS RWY 21L	NELLIS EAST	NELLIS WEST
270.100 MHz	275.800   121.800	327.000   132.55	317.525	LSV 12X	109.10 Mhz	384.400	385.000

# HELICOPTER ARR/DEP VAD-CHART | VALID 2014

**NELLIS AFB (KLSV)**  
LAS VEGAS, NEVADA

ATIS  
270.100  
NELLIS GROUND  
275.800  
NELLIS TOWER  
327.000  
BLACKJACK  
377.800

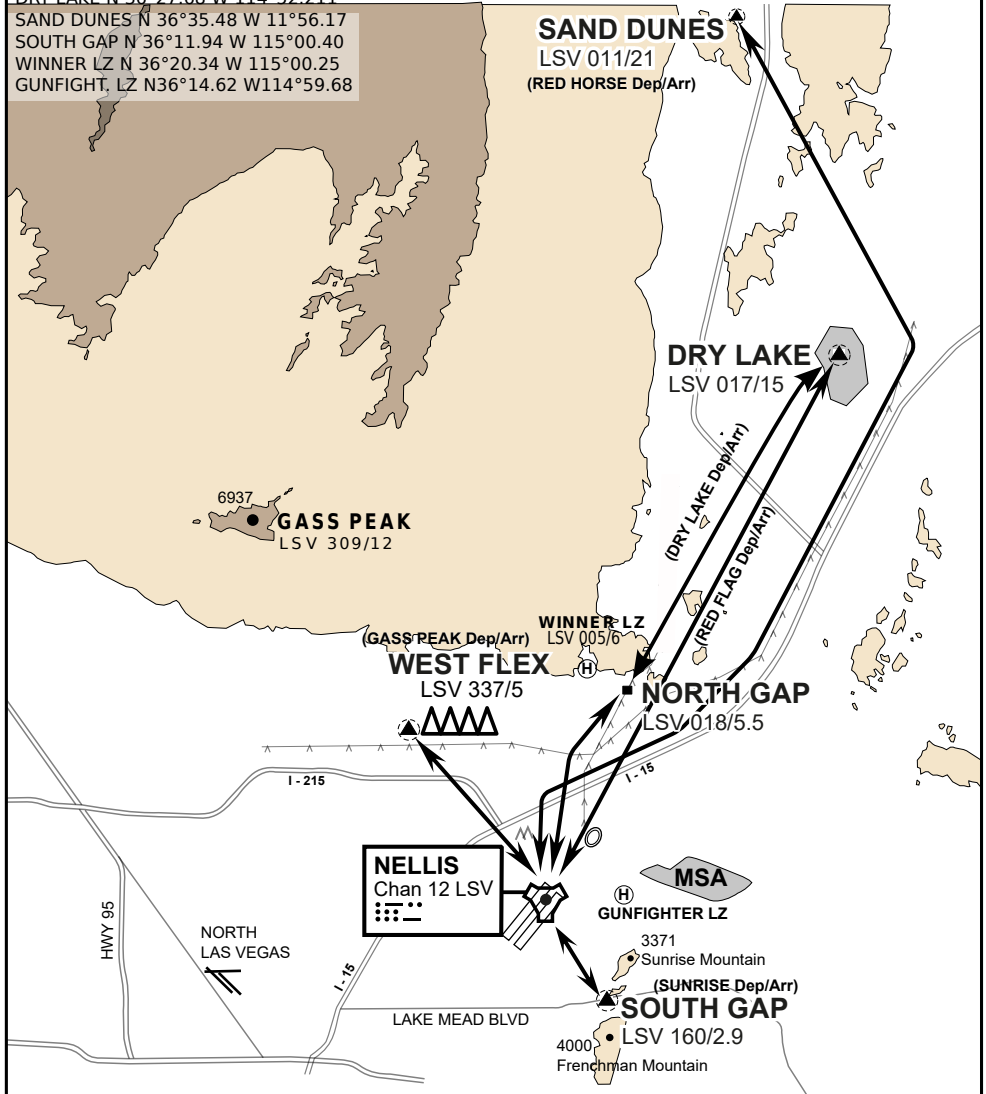
CAUTION: If unable to comply  
with restrictions advise ATC  
prior to departure.

## VMC ONLY

if below WX Minima request SVFR



JOLLY PAD N 36°15.08 W 115°01.65  
WEST FLEX N 36°18.64 W 115°08.00  
NORTH GAP N 36°20.00 W 114°59.30  
DRY LAKE N 36°27.68 W 114°52.211  
SAND DUNES N 36°35.48 W 11°56.17  
SOUTH GAP N 36°11.94 W 115°00.40  
WINNER LZ N 36°20.34 W 115°00.25  
GUNFIGHT, LZ N36°14.62 W114°59.68



vJABeG32NTRR NAV CHART

## HELICOPTER ARRIVAL AND DEPARTURES ROUTES

v.110 22APR20



# HELICOPTER ARR/DEP VAD-CHART | VALID 2014

**NELLIS AFB (KLSV)**  
LAS VEGAS, NEVADA

ATIS  
270.100  
NELLIS GROUND  
275.800  
NELLIS TOWER  
327.000  
BLACKJACK  
377.800

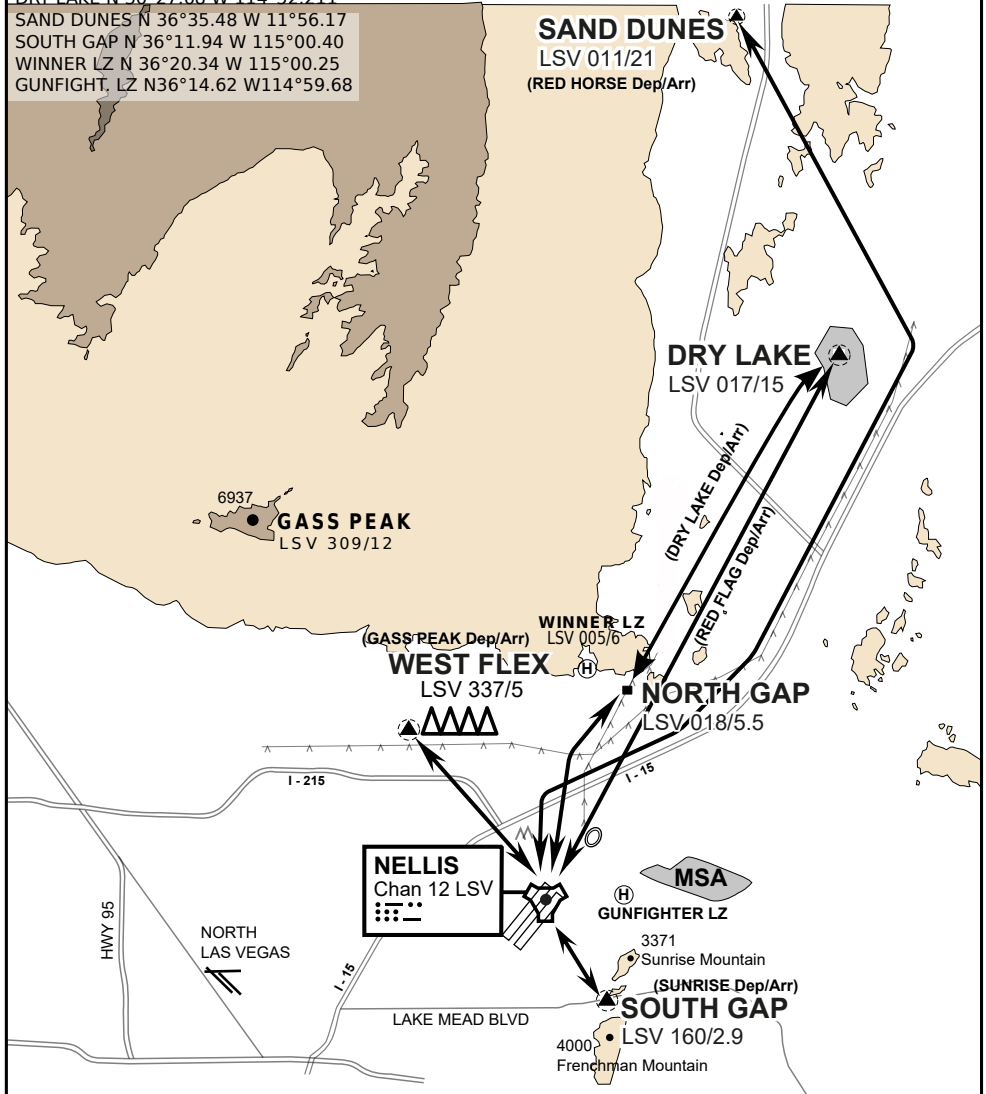
CAUTION: If unable to comply with restrictions advise ATC prior to departure.

## VMC ONLY

if below WX Minima request SVFR



JOLLY PAD N 36°15.08 W 115°01.65  
WEST FLEX N 36°18.64 W 115°08.00  
NORTH GAP N 36°20.00 W 114°59.30  
DRY LAKE N 36°27.68 W 114°52.211  
SAND DUNES N 36°35.48 W 11°56.17  
SOUTH GAP N 36°11.94 W 115°00.40  
WINNER LZ N 36°20.34 W 115°00.25  
GUNFIGHT, LZ N36°14.62 W114°59.68



vJABeG32NTRR NAV CHART

# HELICOPTER ARRIVAL AND DEPARTURES ROUTES

v.110 22APR20



INDIAN SPRINGS, NEVADA

TACAN INS Chan 87	APCH CRS 065°	Rwy ldg TDZE 3133	9002 3113
		Arpt Elev 3113	

INDIAN SPRINGS AF AUX (KINS)

**▼** \* MISSED APPROACH: Straight ahead to INS TACAN, intercept INS R-outbound, cross 17 DME at or above 9500, then direkt KSV TACAN 114

NELLIS CON

CREECH AFB TOWER  
118.30 60.60

GND CON

**NOT FOR CIVIL USE**

FOR USE UNDER BASIC VFR  
WEATHER MINIMUMS ONLY

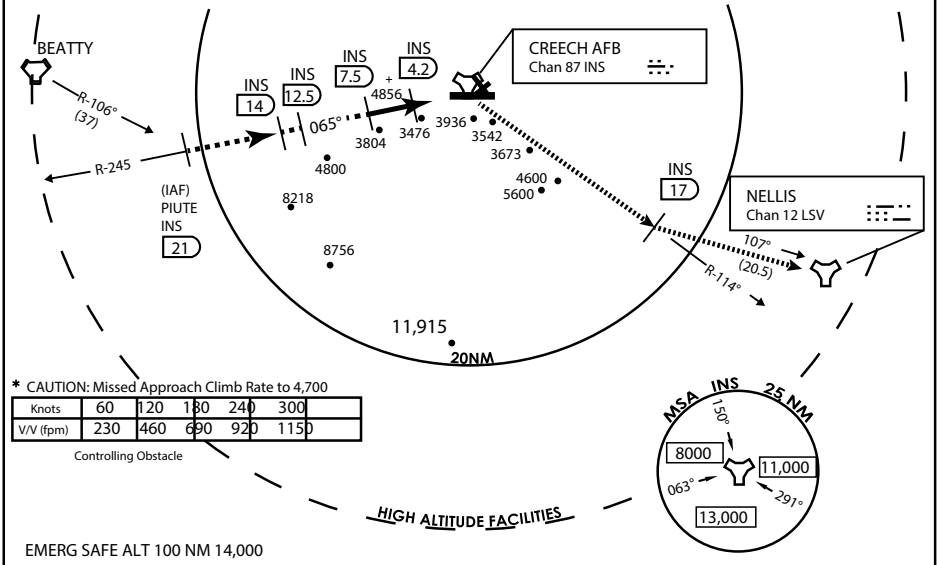
PILOT IS RESPONSIBLE FOR TERRAIN/OBSTACLE AVOIDANCE AND APPROPRIATE VFR CLOUD CLEARANCE FOR ALL

**CAUTION:** Descent gradients are greater than allowed under standard TERPS criteria and inbound course does not meet straight-in criteria

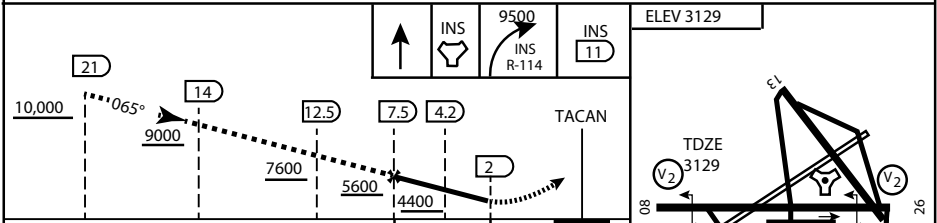
**CAUTION:** Final approach course crosses Runway centerline at MIDFIELD. Maneuvering left of course required prior to landing. Do not Maneuver farther north than the INS R- 258

Modified by viaBog 66 for use with DCS  
NOT FOR REAL LIFE NAVIGATION

Modified by viaBog 66 for use with DCS  
NOT FOR REAL LIFE NAVIGATION



EMERG SAFE ALT 100 NM 14,000



CATEGORY	A	B	C	D	E	
S-8	3760-1 ½	627 (700-1 ½)	3760-1¾ 627 (700-1¾)	3760-2 627 (700-2)	3760-2¼ 627 (700-2¼)	
CIRCLING	NOT AUTHORIZED					MIRL Rwy 8-26

CITY OF INDIAN, NEVADA

INDIAN SPRINGS AF AUX (KINS)

(FOR DAY VFR USE ONLY)



# AIRPORT DIAGRAM

476 VFG

CREECH AFB (KINS)  
INDIAN SPRINGS, NEVADA

ATIS  
122.5  
CREECH TOWER  
118.4 360.7 38.65  
GND CON  
118.3 275.8  
CLNC DEL

115°42'W

FIELD  
ELEV  
3127

80

972 X 150

HOT  
CARGO  
PAD

BAK-12

BAK-12

WEST  
EOR

VAR 12.5° E

115°41'W

476 VFG JAN 2019

476 VFG JAN 2019

CONTROL  
TOWER  
BASE  
OPS

RPA LOLA  
WEST

RPA LOLA  
EAST

LOLA /  
HUNG  
ORDNANCE

199 X 100  
ELEV  
3127  
RUNWAY  
31/13  
MQ/RQ-1  
ONLY

9002 X 150

258.5°

860 X 100

313.8°

4064 X 100

115°40'W

BAK-12

ELEV 3127

EAST  
EOR

1030 X 150

26

# AIRPORT DIAGRAM

INDIAN SPRINGS, NEVADA  
CREECH AFB (KINS)