

**MISSION DATA CARD**

OPORD		Callsign		Mission		Date/Time		
3280/2024		Edelweiss 2		Training		072000OCT24		
Task	TacForm AAR					Freq		
AO	East NTTR					134.5		
Departure				Recovery				
DREAM FOUR				ILS or LOC/DME X RWY 21L				
#	Callsign		Pilot		IFF	TCN	LSR	NET
-1	Edelweiss 2-1		Hercules		1721	1Y	1721	

**LOADOUT**

A/A	2xA120C, 2xA9X				GUN	100% HEI-T	
A/G					CHF	120	
POD	A184				FLR	0	
TKS	2xFT300				FUEL	100%	

**TOLD**

	Takeoff	Target	Joker	Bingo	Land
FUEL	11169				

**AIRBASES**

	Name	TCN	ATIS	GND	TWR	RWY	Elev	ILS
Dep	Nellis AFB	12X	270.1	275.8	327.0	21L	1850	109.1
Arr	Nellis AFB	12X	270.1	275.8	327.0	21L	1850	109.1
Div	Creech AFB	87X	290.45	275.8	360.6			

**FLIGHTPLAN**

#	Name	Navaid/Coords/DME	ALT	TOT
1	DREAM	N37 10 20.400 W114 59 31.800	15000	
2	2	N37 52 W115 01 60	15000	
3	3	N37 52 00.640 W113 00 02.789	15000	
4	4	N36 59 55.118 W112 59 55.025	15000	
5	5	N37 00 10.995 W114 59 20.189	15000	
6	SARAH	N36 36 27 W115 18 01.800	15000	
7	GASS PEAK	N36 24 08.400 W115 10 39.600	15000	
8	SIMNS	N36 17 20.400 W115 10 45	15000	
9	CRAIG	N36 15 15 W115 08 16.200	15000	
10	Nellis AFB	N36 13 32 W115 02 37	1500	

**SUPPORT****Tanker**

Callsign	TCN	Freq	ALT	TAS
TEXACO 2	95Y	289.7	FL220	420
Pos	Pegasus.1: CDC 166/102 (N3730 W11440)			

## OTHER FLIGHTS

Callsign	Mission	Airframe	Freq	TCN	Grpld	Laser
Edelweiss 6	Training	2x F/A-18C	264.35	1/64		173X
AO	RANGE 64C	Task	Refuelling, Patterns, Bomb Delivery R64C			
T-Rex 2	Training	3x A-10C	132.25	1/64	25	165X
AO	R65C	Task	Sensors Switchology			
Monster 1	Training	3x A-10C	132.15	1/64	21	161X
AO	R65C	Task	Sensors Switchology			
Edelweiss 1	Training	1x F/A-18C	264.15	12/75	1	171X
AO		Task	Departure & Recovery Training, BFT Maneuvers, Overhead Breaks			
Edelweiss 4	Training	1x F/A-18C	264.45	1/64		174X
AO		Task				
Edelweiss 2	Training	1x F/A-18C	264.45	1/64		148X
AO	BEATTY	Task	BJT Training			
Nazgul 6	Training	4x F-15E	262.45	1/64		156X
AO		Task				
Jedi* 5	Training	4x AH-64D	133.5	1/64		171X
AO		Task				
Raptor 1	Training	4x F-16C	134.0	1/64		172X
AO	East NTTR	Task	TacForm AAR			

**RADIO CHANNELS**

#	Freq	Name
1		Flight/Squadron specific
2	289.4	Nellis Clearance Delivery
3	275.8	Nellis Ground
4	327.0	Nellis Tower
5	385.4	Nellis Approach/Departure West
6	273.55	Nellis Approach/Departure East
7	317.525	Nellis Control -- Sally
8	254.4	Nellis Control-- Lee
9	305.6	SOF Bullseye
10	343.725	EMERGENCY SINGLE FRQ
11	270.1	Nellis ATIS
12	360.625	Creech AFB Tower
13	250.1	HAVE QUICK 13
14	251.1	HAVE QUICK 14
15	252.1	HAVE QUICK 15
16	377.8	Blackjack
17	265.0	KC-135 AR-641A
18	360.8	KC-135MPRS AR-635
19	319.8	KC-135MPRS AR-625
20	300.05	KC-135 AR-231V

**RAMROD**

0	1	2	3	4	5	6	7	8	9
R	E	D	O	U	B	L	I	N	G

**KTC 1400 C**

	0	1	2	3	4	5	6	7	8	9
A	EOVW	UYN	SJA	PL	QD	HKI	FT	CG	MB	RX
B	KIOU	BNT	AMX	ER	HV	CPG	FS	JW	QL	DY
C	VHSB	GOC	UIJ	TF	WD	LAE	YM	XN	KP	RQ
D	TSDG	BHM	LRC	OK	VF	XPA	EQ	JI	WY	UN
E	YVQK	GPM	RDC	JN	HS	EAL	BW	TX	IU	FO
F	CYBK	SDG	OUR	ET	AI	JLP	HW	NX	QF	VM
G	XMEG	CQW	SIU	FB	PN	KLT	OJ	AY	VR	HD
H	FDHW	ITA	KNJ	ER	PQ	SCX	LY	BU	OV	MG
I	KQNT	EHV	GCB	UD	WY	MPL	IO	SR	AX	FJ
J	XGOL	EMW	YKT	QH	JN	VPS	IF	AC	RB	UD
K	IJPT	MUQ	VLK	SX	EY	AWH	NR	OB	GC	FD
L	LSJV	DOX	YNE	BC	AW	HMI	KT	FP	UG	QR
M	RHLM	OIC	JYQ	DB	VA	EWT	GX	FS	PK	UN
N	UFTN	VCO	ESW	BD	IY	KRA	HG	JX	PQ	LM
O	EQFN	YRA	BSK	VT	WI	XLJ	GH	PC	DO	UM
P	YSGW	VML	IHK	XP	ED	QOR	NB	UF	TJ	CA
Q	LFUX	OIH	VPY	MW	ET	GBK	SJ	CD	NA	RQ
R	LGXE	NVC	BJM	YP	OU	RSQ	FT	WH	KD	IA
S	BCTJ	RGK	OES	QM	YI	PDL	WX	VN	FU	HA
T	RKIH	VEU	PFW	TB	LY	NDQ	AX	OC	GS	JM
U	LRKV	HBC	OIQ	WD	FN	UMS	GP	YA	JE	TX
V	WYEI	XBT	OFU	KJ	MR	CDN	HA	VL	SQ	GP
W	VABD	IGR	CPS	EH	JW	TFK	LN	XQ	UY	MO
X	IBMK	GJY	UDR	LE	HQ	ATN	OC	WS	FV	PX
Y	RKEM	TIH	DPQ	FO	AJ	NGS	WC	LX	VB	YU

**NAVAIDS**

<b>Id</b>	<b>Name</b>	<b>Channel</b>	<b>Position</b>	<b>Elevation</b>
BCE	Bryce Canyon	75	N3741.35 W11218.23	9040
BIH	Bishop	33	N3722.62 W11821.99	4114
BLD	Boulder	114	N3559.75 W11451.82	3650
BTY	Beatty	94	N3648.54 W11644.86	2925
CDC	Cedar City	120	N3747.24 W11304.90	5463
DAG	Daggett	79	N3457.75 W11634.69	1760
EED	Needles	99	N3445.96 W11428.43	650
GFS	Goffs	91	N3507.87 W11510.59	4019
GRL	Groom Lake	18	N3713.91 W11548.16	4475
HEC	Hector	74	N3447.83 W11627.78	1854
ILC	Wilson Creek	110	N3815.02 W11423.65	9318
INS	Creech AFB	87	N3635.20 W11540.12	3101
LAS	McCarran Intl	116	N3604.78 W11509.59	2142
LSV	Nellis	12	N3614.68 W11501.50	1864
MLF	Milford	58	N3821.62 W11300.79	4977
MMM	Mormon Mesa	90	N3646.16 W11416.65	2120
MVA	Mina	98	N3833.92 W11801.97	7860
OAL	Coale Dale	124	N3800.20 W11746.23	4800
PGS	Peach Springs	57	N3537.48 W11332.67	4754
TPH	Tonopah Muni	119	N3801.84 W11702.01	5330
TQQ	Silverbow	77	N3748.00 W11647.00	5500
UTI	St George	23	N3705.29 W11335.53	2871



RWY 3L-21R  
 PCN 46 R/C/W/T  
 RWY 3R-21L  
 PCN 51 R/C/W/T  
 2017

PAR	RWY	CAT	MINIMA		ARP	ELEV	Scale 1:35'500	
	21L	A B D E	2057 - 0.8 200	(200-0.8/1.6) GS 3°	36° 14.060° N 115° 01.058° W	1857 [ft] 566 [m]	0 300 600 900 1200 1500 [m]	
	3R	A B D E	2057 - 0.8 200	(200-0.8/1.6) GS 3°			0 1000 2000 3000 4000 5000 [ft]	
SRA	21R	A C D E	2257 - 1.2 350	(350-1.2/1.6)				
	3L	A C D E	2257 - 1.2 350	(350-1.2/1.6)				

RWY	TORA	TODA	ASDA	LDA	PSN	THR	ALS
21L	10051 [ft] 3063 [m]	11051 [ft] 3368 [m]	11051 [ft] 3368 [m]	10051 [ft] 3063 [m]	36°14.043' N	115°01.018' W	⊕
3R	10120 [ft] 3084 [m]	11120 [ft] 3398 [m]	11120 [ft] 3398 [m]	10120 [ft] 3084 [m]	36°13.029' N	115°02.038' W	

ATIS	NELLIS GROUND	NELLIS TOWER	NELLIS CONTROL	TACAN	ILS RWY 21L	NELLIS EAST	NELLIS WEST
270.100 MHz	275.800   121.800	327.000   132.55	317.525	LSV 12X	109.10 Mhz	384.400	385.000



**DREAM FOUR DEPARTURE** DREAM4 | **VALID 2014**

LAS VEGAS, NEVADA

ATIS  
270.100  
NELLIS GROUND  
275.800  
NELLIS TOWER  
327.000  
NELLIS CONTROL  
317.525  
NELLIS DEP/APP EAST  
384.400  
BLACKJACK  
377.800

**DREAM**

N3710.34  
W11459.53

**MINTT**  
LAS 351/38  
17,000

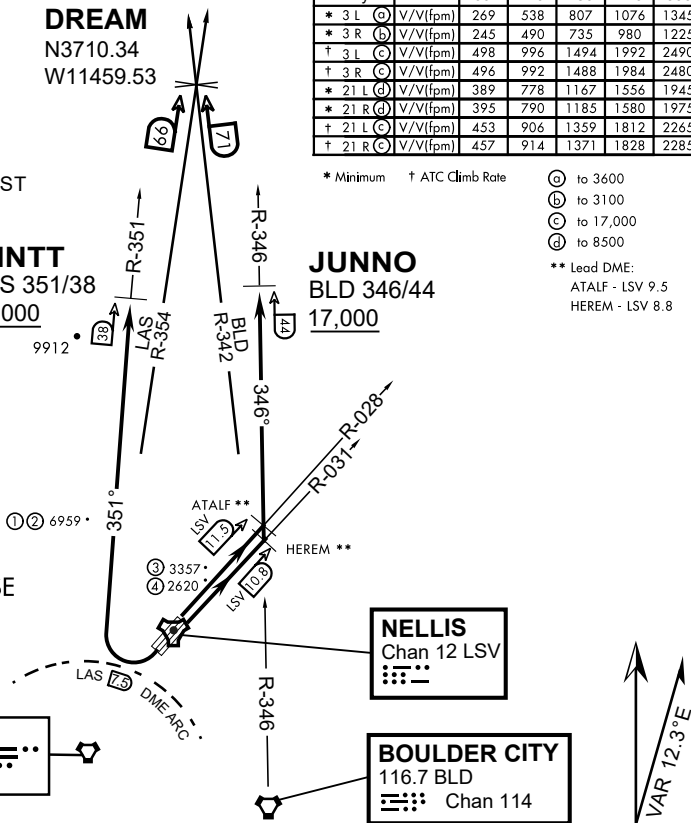
**JUNNO**  
BLD 346/44  
17,000

Rwy	Knots	60	120	180	240	300	360
* 3 L (A)	V/V(fpm)	269	538	807	1076	1345	1614
* 3 R (B)	V/V(fpm)	245	490	735	980	1225	1470
† 3 L (C)	V/V(fpm)	498	996	1494	1992	2490	2988
† 3 R (C)	V/V(fpm)	496	992	1488	1984	2480	2976
* 21 L (D)	V/V(fpm)	389	778	1167	1556	1945	2334
* 21 R (D)	V/V(fpm)	395	790	1185	1580	1975	2370
† 21 L (C)	V/V(fpm)	453	906	1359	1812	2265	2718
† 21 R (C)	V/V(fpm)	457	914	1371	1828	2285	2742

\* Minimum † ATC Climb Rate

- (A) to 3600
  - (B) to 3100
  - (C) to 17,000
  - (D) to 8500
- \*\* Lead DME:  
ATALF - LSV 9.5  
HEREM - LSV 8.8

- ① 12.24 NM from Rwy 21R
- ② 12.40 NM from Rwy 21L
- ③ 5.67 NM from Rwy 3L
- ④ 5.85 NM from Rwy 3R



**NOT FOR CIVIL USE**

CAUTION: If unable to comply with restrictions advise ATC prior to departure.

**DEPARTURE ROUTE DESCRIPTION**

TAKE-OFF RWY 3L

- Fly runway heading to intercept the LSV TACAN R-028 then direct ATALF, intercept the BLD VORTAC R-346 then direct JUNNO, cross JUNNO at or above 17,000, then via assigned route.

TAKE-OFF RWY 3R

- Fly runway heading to intercept the LSV TACAN R-031 then direct HEREM, intercept the BLD VORTAC R-346 then direct JUNNO, cross JUNNO at or above 17,000, then via assigned route.

TAKE-OFF RWY 21L/R

- Turn right to intercept LAS VORTAC R-351 outbound. Remain North of LAS 7.5 DME turning Northbound. Intercept LAS R-351 between 5000 and 6000, do not proceed West of LAS R-351. Cross MINTT at or above 17,000, then via assigned route.

NOISE ABATMENT PROCEDURES: Fly acc. Nellis Noise Abatement instructions

**DREAM FOUR DEPARTURE (DREAM4 • DREAM)**

LAS VEGAS, NEVADA

# ILS or LOC X RWY 21L

LOC I-DIQ <b>109.1</b>	APCH CRS <b>209°</b>	Rwy ldg 21L <b>10,051</b>	21R <b>10,120</b>
		TDZE <b>1865</b>	<b>1869</b>
		Arprt Elev <b>1869</b>	

AL-227 (USAF)

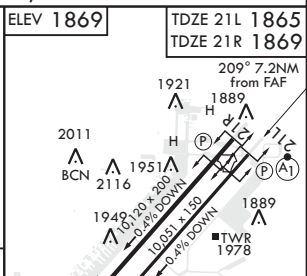
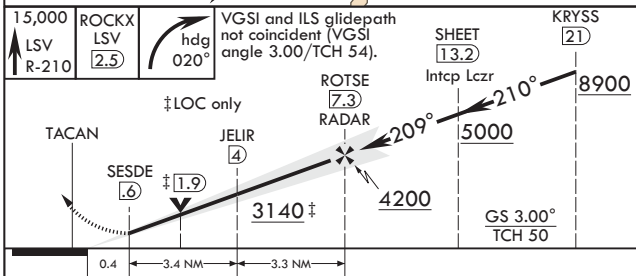
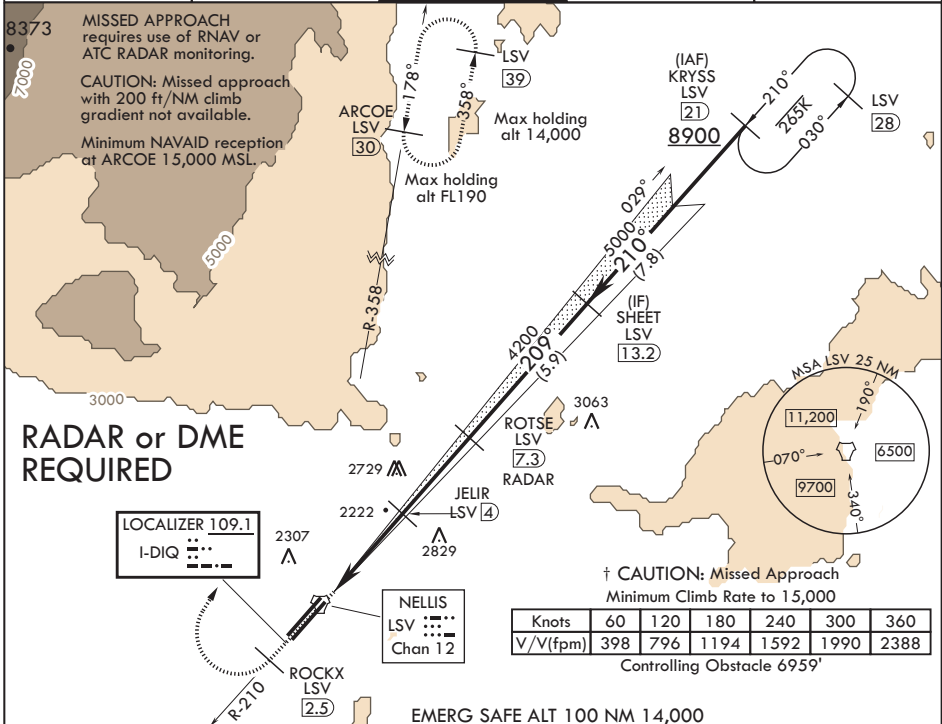
NELLIS AFB (KLSV)

⚠ \* When ALS inop, increase all CAT RVR to 40, vis to 3/4 mile.  
 \*\* When ALS inop, increase CAT AB RVR to 55, vis to 1 mile, CAT CDE vis to 1 3/4 miles.  
 \*\*\* Circling not authorized E of Rwy 3R-21L.



† MISSED APPROACH: Climb to 15,000, intercept LSV TACAN R-210 to 2.5 DME (ROCKX), then climbing right turn heading 020° to join LSV TACAN R-358 to ARCOE and hold, continue climb in hold to 15,000. Missed approach not for civil use.

ATIS <b>270.1</b>	APP CON <b>124.95 273.55</b>	TOWER <b>132.55 327.0</b>	GND CON <b>121.8 275.8</b>	CLNC DEL <b>120.9 289.4</b>
----------------------	---------------------------------	------------------------------	-------------------------------	--------------------------------



CATEGORY	A	B	C	D	E
S-ILS 21L*	2065/24		200	(200-1/2)	
S-LOC 21L**	2480/24	615 (700-1/2)	2480-1 3/4	615 (700-1 3/4)	
SIDESTEP 21R	2500-1	631 (700-1)	2500-1 3/4	631 (700-1 3/4)	
CIRCLING***	2480-1	2620-1	2620-2 1/4	2840-3	3040-3
	611 (700-1)	751 (800-1)	751 (800-2 1/4)	971 (1000-3)	1171 (1200-3)

ELEV 1869	TDZE 21L 1865	TDZE 21R 1869			
HIRL all Rwys ⚠ 2022					
FAF to MAP 6.7 NM					
Knots	60	90	120	150	180
Min:Sec	6:42	4:28	3:21	2:41	2:14

LAS VEGAS, NEVADA

36°14'N - 115°02'W

NELLIS AFB (KLSV)

Amdt 9 03JAN19

# ILS or LOC X RWY 21L

SW-4, 05 DEC 2019 to 02 JAN 2020

SW-4, 05 DEC 2019 to 02 JAN 2020



INDIAN SPRINGS, NEVADA

TACAN INS Chan 87	APCH CRS 065°	Rwy ldg TDZE 3133	9002 3113
		Arpt Elev 3113	

INDIAN SPRINGS AF AUX (KINS)

**▼** \* MISSED APPROACH: Straight ahead to INS TACAN, intercept INS R-outbound, cross 17 DME at or above 9500, then direkt KSV TACAN 114

NELLIS CON

CREECH AFB TOWER  
118.30 60.60

GND CON

**NOT FOR CIVIL USE**

FOR USE UNDER BASIC VFR  
WEATHER MINIMUMS ONLY

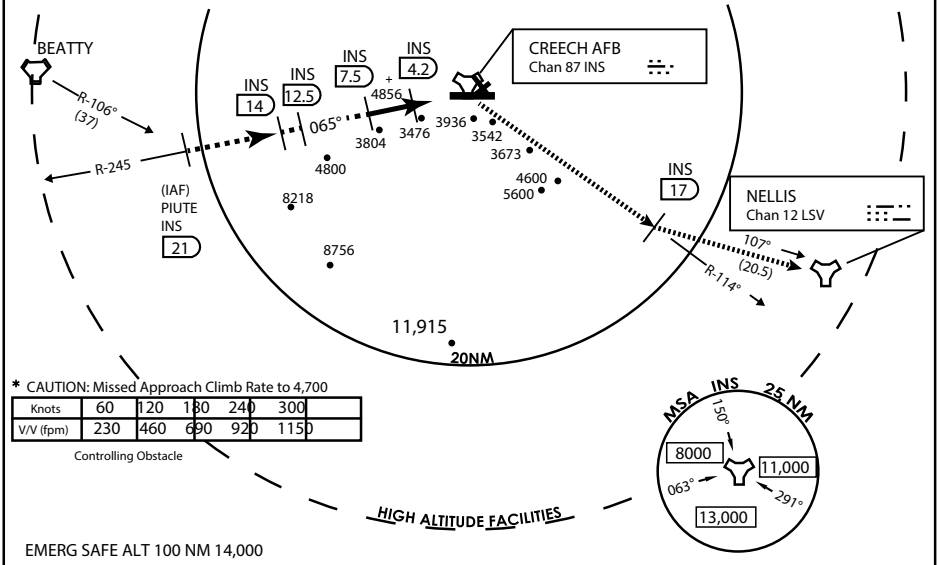
PILOT IS RESPONSIBLE FOR TERRAIN/OBSTACLE  
AVOIDANCE AND  
APPROPRIATE VFR CLOUD  
CLEARANCE FOR ALL

CAUTION: Descent gradients are greater than allowed under standard TERPS criteria and inbound course does not meet straight-in criteria

CAUTION: Final approach course crosses Runway centerline at MIDFIELD. Maneuvering left of course required prior to landing. Do not Maneuver farther north than the INS R- 258

Modified by viaBog 66 for use with DCS  
NOT FOR REAL LIFE NAVIGATION

Modified by viaBog 66 for use with DCS  
NOT FOR REAL LIFE NAVIGATION



\* CAUTION: Missed Approach Climb Rate to 4,700

Knots	60	120	180	240	300
V/V (fpm)	230	460	690	920	1150

Controlling Obstacle

HIGH ALTITUDE FACILITIES

EMERG SAFE ALT 100 NM 14,000

	INS 9500		INS R-114		INS 11		ELEV 3129							
	INS 21		INS 14		INS 12.5		INS 7.5		INS 4.2		INS 2		TACAN	
	V2		V2		V2		V2		V2		V2		V2	
CATEGORY		A	B	C	D	E								
S-8		3760-1	1/2 627 (700-1 1/2)	3760-1 3/4 627 (700-1 3/4)	3760-2 627 (700-2)	3760-2 1/4 627 (700-2 1/4)								
CIRCLING		NOT AUTHORIZED										MIRL Rwy 8-26		

CITY OF INDIAN, NEVADA

INDIAN SPRINGS AF AUX (KINS)

(FOR DAY VFR USE ONLY)



# AIRPORT DIAGRAM

ATIS  
122.5  
CREECH TOWER  
118.4 360.7 38.65  
GND CON  
118.3 275.8  
CLNC DEL

115°42'W

FIELD  
ELEV  
3127

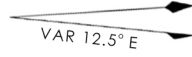
80

972 X 150

HOT  
CARGO  
PAD

78.9°

BAK-12



WEST  
EOR

115°41'W

476 vFG JAN 2019

CONTROL  
TOWER  
BASE  
OPS

RPA LOLA  
WEST

RPA LOLA  
EAST

LOLA /  
HUNG  
ORDNANCE

199 X 100  
ELEV  
3127  
RUNWAY  
31/13  
MQ/RQ-1  
ONLY

9002 X 150

258.5°

860 X 100

313.8°

4064 X 100

BAK-12

ELEV  
3127

115°40'W

EAST  
EOR

1030 X 150

26

476 vFG JAN 2019

# AIRPORT DIAGRAM