

MISSION DATA CARD

OPORD		Callsign		Mission		Date/Time		
3276/2024		Monster 1		Training		072030OCT24		
Task	Sensors Switchology					Freq		
AO	R65C					132.15		
Departure				Recovery				
FYTTR THREE				TACAN RWY 21L				
#	Callsign		Pilot		IFF	TCN	LSR	NET
-1	Monster 1-1		Marsy		1411	1Y	1611	21/01
-2	Monster 1-2		Lenzi		1412	64Y	1612	21/02

LOADOUT

A/A	A9M				GUN	100% CM	
A/G	7M282L, 2xA65D				CHF	120	
POD	A184, TGP				FLR	360	
TKS					FUEL	80%	

TOLD

	Takeoff	Target	Joker	Bingo	Land
FUEL	8869				

AIRBASES

	Name	TCN	ATIS	GND	TWR	RWY	Elev	ILS
Dep	Nellis AFB	12X	270.1	275.8	327.0	21L	1850	109.1
Arr	Nellis AFB	12X	270.1	275.8	327.0	21L	1850	109.1
Div	Creech AFB	87X	290.45	275.8	360.6			

FLIGHTPLAN

#	Name	Navaid/Coords/DME	ALT	TOT
1	FYTTR	LSV 269/33 (N36 21.440 W115 41.470)	12000	
2	T65.02	N36 41.265 W115 46.857		
3	T65.03	N36 42.589 W115 46.126		
4	STRYK	LSV 282/26 (N36 25.620 W115 30.700)	10000	
5	GASS PEAK	LSV 309/12 (N36 24.140 W115 10.660)		
6	APEX	LSV 027/09 (N36 21.580 W114 54.340)		
7	SIMNS	LSV 276/8 (N36 17.340 W115 10.750)		
8	CRAIG	LSV 263/5.5 (N36 15.250 W115 08.270)		

COMMS

Radio	Usage
1	132.15
2	11 - 3 - 4 - 16 - 11 - 4 - 3
3	32.00

SUPPORT**Tanker**

Callsign	TCN	Freq	ALT	TAS
TEXACO 3	22Y	300.05	15000	280
Pos	AR-231V: BTY 126/37 (N3620 W11614)			

OTHER FLIGHTS

Callsign	Mission	Airframe	Freq	TCN	Grpld	Laser
Edelweiss 6	Training	2x F/A-18C	264.35	1/64		173X
AO	RANGE 64C	Task	Refuelling, Patterns, Bomb Delivery R64C			
T-Rex 2	Training	3x A-10C	132.25	1/64	25	165X
AO	R65C	Task	Sensors Switchology			
Edelweiss 1	Training	1x F/A-18C	264.15	12/75	1	171X
AO		Task	Departure & Recovery Training, BFT Maneuvers , Overhead Breaks			
Edelweiss 4	Training	1x F/A-18C	264.45	1/64		174X
AO		Task				
Edelweiss 2	Training	4x F-16C	134.5	1/64		172X
AO	East NTTR	Task	TacForm AAR			
Edelweiss 2	Training	1x F/A-18C	264.45	1/64		148X
AO	BEATTY	Task	BJT Training			
Nazgul 6	Training	4x F-15E	262.45	1/64		156X
AO		Task				
Jedi* 5	Training	4x AH-64D	133.5	1/64		171X
AO		Task				
Raptor 1	Training	4x F-16C	134.0	1/64		172X
AO	East NTTR	Task	TacForm AAR			

RADIO CHANNELS

#	Freq	Name
1		Flight/Squadron specific
2	289.4	Nellis Clearance Delivery
3	275.8	Nellis Ground
4	327.0	Nellis Tower
5	385.4	Nellis Approach/Departure West
6	273.55	Nellis Approach/Departure East
7	317.525	Nellis Control -- Sally
8	254.4	Nellis Control-- Lee
9	305.6	SOF Bullseye
10	343.725	EMERGENCY SINGLE FRQ
11	270.1	Nellis ATIS
12	360.625	Creech AFB Tower
13	250.1	HAVE QUICK 13
14	251.1	HAVE QUICK 14
15	252.1	HAVE QUICK 15
16	377.8	Blackjack
17	265.0	KC-135 AR-641A
18	360.8	KC-135MPRS AR-635
19	319.8	KC-135MPRS AR-625
20	300.05	KC-135 AR-231V

RAMROD

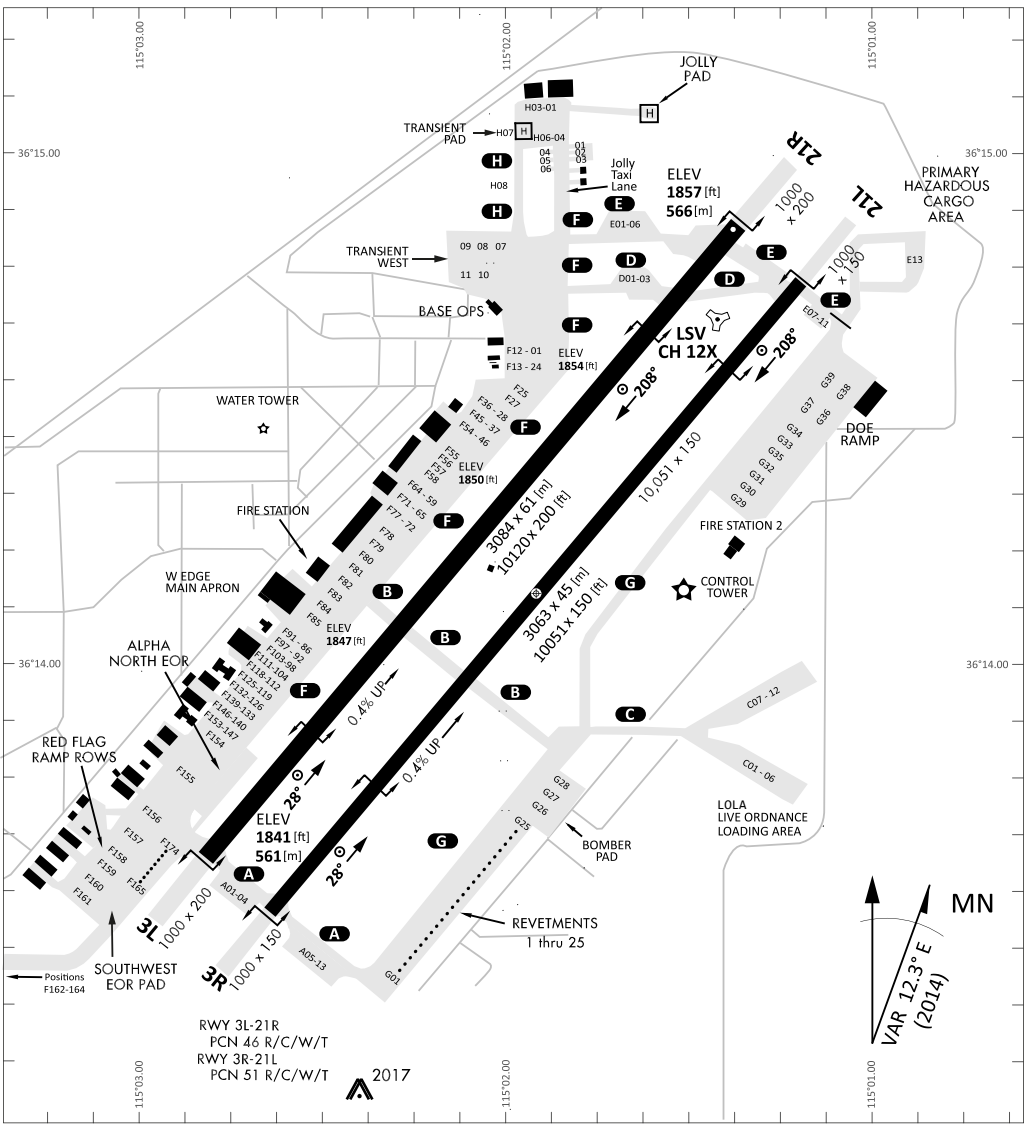
0	1	2	3	4	5	6	7	8	9
R	E	D	O	U	B	L	I	N	G

KTC 1400 C

	0	1	2	3	4	5	6	7	8	9
A	EOVW	UYN	SJA	PL	QD	HKI	FT	CG	MB	RX
B	KIOU	BNT	AMX	ER	HV	CPG	FS	JW	QL	DY
C	VHSB	GOC	UIJ	TF	WD	LAE	YM	XN	KP	RQ
D	TSDG	BHM	LRC	OK	VF	XPA	EQ	JI	WY	UN
E	YVQK	GPM	RDC	JN	HS	EAL	BW	TX	IU	FO
F	CYBK	SDG	OUR	ET	AI	JLP	HW	NX	QF	VM
G	XMEG	CQW	SIU	FB	PN	KLT	OJ	AY	VR	HD
H	FDHW	ITA	KNJ	ER	PQ	SCX	LY	BU	OV	MG
I	KQNT	EHV	GCB	UD	WY	MPL	IO	SR	AX	FJ
J	XGOL	EMW	YKT	QH	JN	VPS	IF	AC	RB	UD
K	IJPT	MUQ	VLK	SX	EY	AWH	NR	OB	GC	FD
L	LSJV	DOX	YNE	BC	AW	HMI	KT	FP	UG	QR
M	RHLM	OIC	JYQ	DB	VA	EWT	GX	FS	PK	UN
N	UFTN	VCO	ESW	BD	IY	KRA	HG	JX	PQ	LM
O	EQFN	YRA	BSK	VT	WI	XLJ	GH	PC	DO	UM
P	YSGW	VML	IHK	XP	ED	QOR	NB	UF	TJ	CA
Q	LFUX	OIH	VPY	MW	ET	GBK	SJ	CD	NA	RQ
R	LGXE	NVC	BJM	YP	OU	RSQ	FT	WH	KD	IA
S	BCTJ	RGK	OES	QM	YI	PDL	WX	VN	FU	HA
T	RKIH	VEU	PFW	TB	LY	NDQ	AX	OC	GS	JM
U	LRKV	HBC	OIQ	WD	FN	UMS	GP	YA	JE	TX
V	WYEI	XBT	OFU	KJ	MR	CDN	HA	VL	SQ	GP
W	VABD	IGR	CPS	EH	JW	TFK	LN	XQ	UY	MO
X	IBMK	GJY	UDR	LE	HQ	ATN	OC	WS	FV	PX
Y	RKEM	TIH	DPQ	FO	AJ	NGS	WC	LX	VB	YU

NAVAIDS

Id	Name	Channel	Position	Elevation
BCE	Bryce Canyon	75	N3741.35 W11218.23	9040
BIH	Bishop	33	N3722.62 W11821.99	4114
BLD	Boulder	114	N3559.75 W11451.82	3650
BTY	Beatty	94	N3648.54 W11644.86	2925
CDC	Cedar City	120	N3747.24 W11304.90	5463
DAG	Daggett	79	N3457.75 W11634.69	1760
EED	Needles	99	N3445.96 W11428.43	650
GFS	Goffs	91	N3507.87 W11510.59	4019
GRL	Groom Lake	18	N3713.91 W11548.16	4475
HEC	Hector	74	N3447.83 W11627.78	1854
ILC	Wilson Creek	110	N3815.02 W11423.65	9318
INS	Creech AFB	87	N3635.20 W11540.12	3101
LAS	McCarran Intl	116	N3604.78 W11509.59	2142
LSV	Nellis	12	N3614.68 W11501.50	1864
MLF	Milford	58	N3821.62 W11300.79	4977
MMM	Mormon Mesa	90	N3646.16 W11416.65	2120
MVA	Mina	98	N3833.92 W11801.97	7860
OAL	Coale Dale	124	N3800.20 W11746.23	4800
PGS	Peach Springs	57	N3537.48 W11332.67	4754
TPH	Tonopah Muni	119	N3801.84 W11702.01	5330
TQQ	Silverbow	77	N3748.00 W11647.00	5500
UTI	St George	23	N3705.29 W11335.53	2871



RWY 3L-21R
 PCN 46 R/C/W/T
 RWY 3R-21L
 PCN 51 R/C/W/T
 2017

PAR	RWY	CAT	MINIMA		ARP	ELEV	Scale 1:35'500	
	21L	A B D E	2057 - 0.8 200	(200-0.8/1.6) GS 3°	36° 14.060° N 115° 01.058° W	1857 [ft] 566 [m]	0 300 600 900 1200 1500 [m]	
	3R	A B D E	2057 - 0.8 200	(200-0.8/1.6) GS 3°			0 1000 2000 3000 4000 5000 [ft]	
SRA	21R	A C D E	2257 - 1.2 350	(350-1.2/1.6)				
	3L	A C D E	2257 - 1.2 350	(350-1.2/1.6)				

RWY	TORA	TODA	ASDA	LDA	PSN	THR	ALS
21L	10051 [ft] 3063 [m]	11051 [ft] 3368 [m]	11051 [ft] 3368 [m]	10051 [ft] 3063 [m]	36°14.043' N	115°01.018' W	⊕
3R	10120 [ft] 3084 [m]	11120 [ft] 3398 [m]	11120 [ft] 3398 [m]	10120 [ft] 3084 [m]	36°13.029' N	115°02.038' W	

ATIS	NELLIS GROUND	NELLIS TOWER	NELLIS CONTROL	TACAN	ILS RWY 21L	NELLIS EAST	NELLIS WEST
270.100 MHz	275.800 121.800	327.000 132.55	317.525	LSV 12X	109.10 Mhz	384.400	385.000

FYTTR THREE DEPARTURE IFR CHART | VALID 2014 LAS VEGAS, NEVADA

ATIS
270.100
NELLIS GROUND
275.800
NELLIS TOWER
327.000
NELLIS CONTROL
317.525
NELLIS DEP/APP EAST
384.400
BLACKJACK
377.800



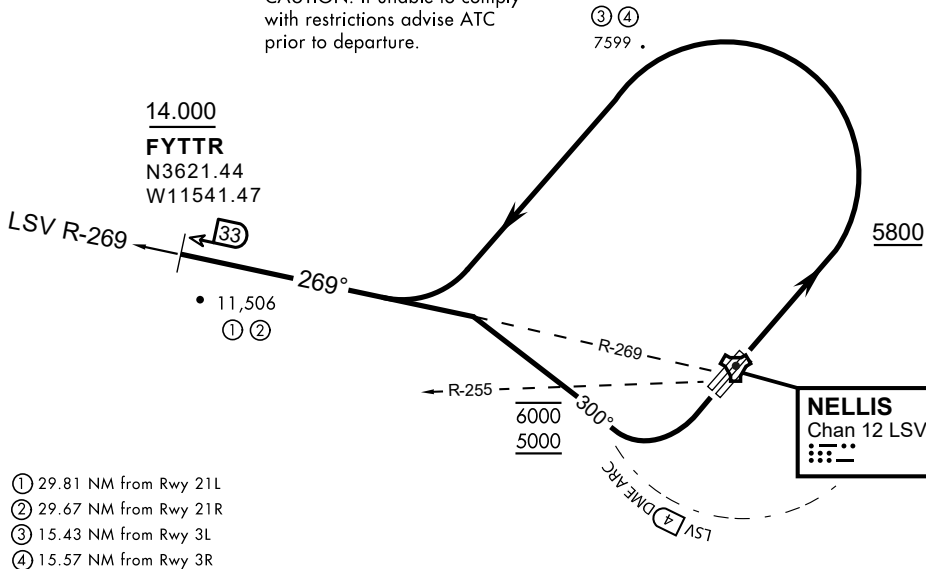
Rwy	Knots	60	120	180	240	300	360
3L (a)	V/V(fpm)	394	788	1182	1576	1970	2364
3R (a)	V/V(fpm)	392	784	1176	1568	1960	2352
21L (b)	V/V(fpm)	388	776	1164	1552	1940	2328
21R (b)	V/V(fpm)	390	780	1170	1560	1950	2340

Minimum Climb Rate

(a) to 9300

(b) to 13 500

CAUTION: If unable to comply with restrictions advise ATC prior to departure.



- (1) 29.81 NM from Rwy 21L
- (2) 29.67 NM from Rwy 21R
- (3) 15.43 NM from Rwy 3L
- (4) 15.57 NM from Rwy 3R

DEPARTURE ROUTE DESCRIPTION

TAKEOFF RWY 3L/R

- Fly runway heading until reaching 5,800'.
- Then climbing left turn to intercept LSV TACAN R-269 outbound.
- Cross FYTTR at or above 14,000' or as assigned, then via assigned route.

TAKEOFF RWY 21L/21R

- Turn right to intercept LSV TACAN R-269 outbound.
- Remain within LSV 4 DME until joining LSV R-269
- Cross R-255 between 5,000' and 6,000'.
- Cross FYTTR at or above 14,000' or as assigned, then via assigned route.

NOISE ABATEMENT PROCEDURES:

Fly according Nellis Noise Abatement instructions as published

LAS VEGAS, NEVADA

TACAN RWY 21L

TACAN LSV Chan 12	APCH CRS 207°	Rwy Idg 10,055 TDZE 1866 Arprt Elev 1870
----------------------	------------------	--

AL-227 [USAF]

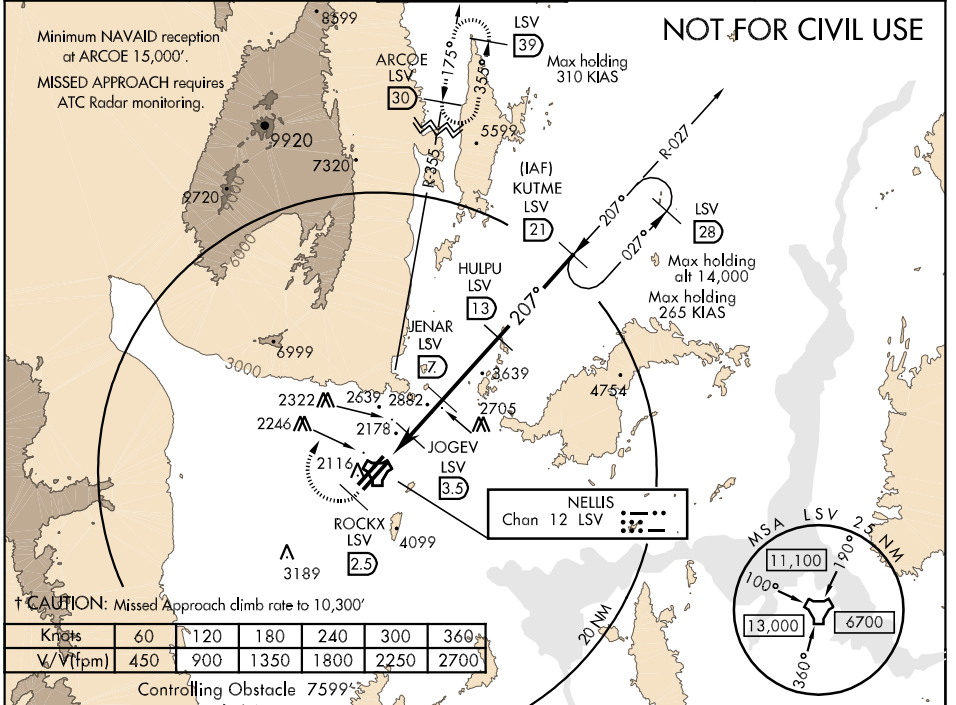
NELLIS AFB (KLSV)

▼ * When ALS inop, increase CAT AB RVR to 50, vis to 1 mile, CAT C vis to 1¼ miles, CAT D vis to 2 miles, CAT E vis to 2½ miles.
** Circling not authorized E of Rwy 3R-21L.



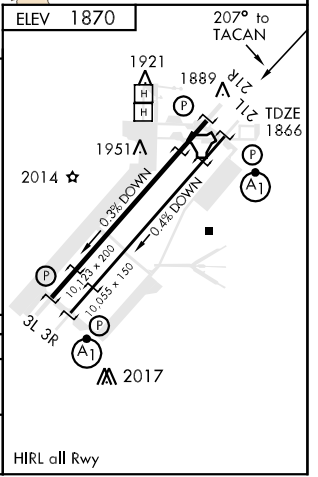
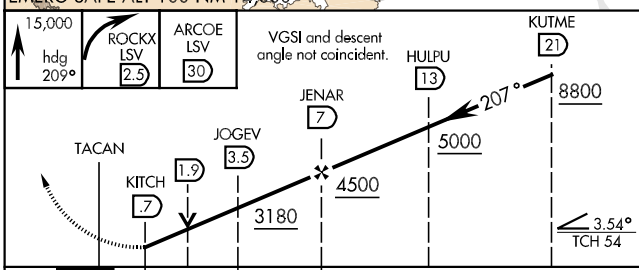
† MISSED APPROACH: Climb to 15,000, heading 209° to 2.5 DME (ROCKX), then climbing right turn heading 020° to join LSV TACAN R-355 to ARCOE and hold, continue climb in hold to 15,000.

ATIS 270.1	NELLIS APP CON 124.95 273.55	NELLIS TOWER 132.55 327.0	GND CON 121.8 275.8	CINC DEL 120.9 289.4
---------------	---------------------------------	------------------------------	------------------------	-------------------------



Knots	60	120	180	240	300	360
V/V(ftm)	450	900	1350	1800	2250	2700

Controlling Obstacle 7599'
EMERG SAFE ALT 100 NM 14,000'



CATEGORY	A	B	C	D	E
S-21L *	2480/24 614 (700-½)		2480/60 614 (700-1¼)	2480-1½ 614 (700-1½)	2480-1¾ 614 (700-1¾)
CIRCLING **	2480-1 610 (700-1)	2680-1¼ 810 (900-1¼)	2680-2¼ 810 (900-2¼)	2680-2½ 810 (900-2½)	2940-3 1070(1100-3)

LAS VEGAS, NEVADA
Amdt 3 10266

36°14'N-115°02'W

NELLIS AFB (KLSV)

TACAN RWY 21L

SW-4, 23 SEP 2010 to 21 OCT 2010

SW-4, 23 SEP 2010 to 21 OCT 2010



INDIAN SPRINGS, NEVADA

TACAN INS Chan 87	APCH CRS 065°	Rwy ldg TDZE 3133	9002 3133
		Arpt Elev 3113	

INDIAN SPRINGS AF AUX (KINS)

▼ * MISSED APPROACH: Straight ahead to INS TACAN, intercept INS R-outbound, cross 17 DME at or above 9500, then direkt KSV TACAN 114

NELLIS CON

CREECH AFB TOWER
118.30 60.60

GND CON

NOT FOR CIVIL USE

FOR USE UNDER BASIC VFR
WEATHER MINIMUMS ONLY

PILOT IS RESPONSIBLE FOR TERRAIN/OBSTACLE AVOIDANCE AND APPROPRIATE VFR CLOUD CLEARANCE FOR ALL

CAUTION: Descent gradients are greater than allowed under standard TERPS criteria and inbound course does not meet straight-in criteria

CAUTION: Final approach course crosses Runway centerline at MIDFIELD. Maneuvering left of course required prior to landing. Do not Maneuver farther north than the INS R- 258

Modified by vJaBoG 66 for use with DCS
NOT FOR REAL LIFE NAVIGATION

Modified by vJaBoG 66 for use with DCS
NOT FOR REAL LIFE NAVIGATION

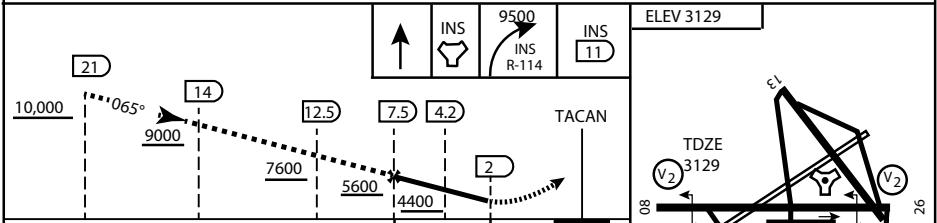


* CAUTION: Missed Approach Climb Rate to 4,700

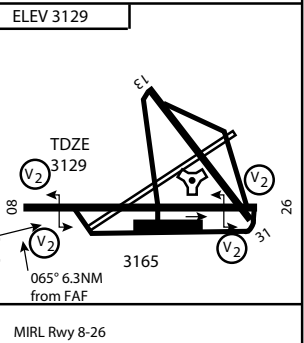
Knots	60	120	180	240	300
V/V (fpm)	230	460	690	920	1150

Controlling Obstacle

EMERG SAFE ALT 100 NM 14,000



CATEGORY	A	B	C	D	E
S-8	3760-1 1/2	627 (700-1 1/2)	3760-1 3/4 627 (700-1 3/4)	3760-2 627 (700-2)	3760-2 1/4 627 (700-2 1/4)
CIRCLING	NOT AUTHORIZED				



CITY OF INDIAN, NEVADA

INDIAN SPRINGS AF AUX (KINS)

(FOR DAY VFR USE ONLY)



AIRPORT DIAGRAM

476 VFG

CREECH AFB (KINS)
INDIAN SPRINGS, NEVADA

ATIS
 122.5
 CREECH TOWER
 118.4 360.7 38.65
 GND CON
 118.3 275.8
 CLNC DEL

115°42'W

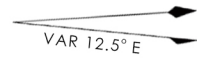
FIELD
 ELEV
 3127

80

972 X 150

HOT CARGO PAD

BAK-12



WEST EOR

115°41'W

476 VFG JAN 2019

CONTROL TOWER
 BASE OPS

RPA LOLA WEST

RPA LOLA EAST

LOLA / HUNG ORDNANCE

RUNWAY
 31/13
 MQ/RQ-1
 ONLY

9002 X 150

258.5°

860 X 100

313.8°

4064 X 100

199 X 100

13

ELEV 3127

BAK-12

ELEV 3127

EAST EOR

1030 X 150

115°40'W

26

476 VFG JAN 2019

AIRPORT DIAGRAM

INDIAN SPRINGS, NEVADA
CREECH AFB (KINS)