

MISSION DATA CARD

OPORD		Callsign		Mission		Date/Time		
3265/2024		Panther 6		Training		032000OCT24		
Task	A2A Training - Super Sonic					Freq		
AO	Range 71N/71S (hot/active)					261.35		
Departure				Recovery				
FYTTR THREE				ARCOE				
#	Callsign		Pilot		IFF	TCN	LSR	NET

LOADOUT

A/A	2xA9X, A120C				GUN	100% HEI-T	
A/G	2xA88C, G12, A65F				CHF	80	
POD	TGP				FLR	40	
TKS	FPU-8A				FUEL	100%	

TOLD

	Takeoff	Target	Joker	Bingo	Land
FUEL	13047		3500		

AIRBASES

	Name	TCN	ATIS	GND	TWR	RWY	Elev	ILS
Dep	Nellis AFB	12X	270.1	275.8	327.0	21L	1850	109.1
Arr	Nellis AFB	12X	270.1	275.8	327.0	21L	1850	109.1
Div	Creech AFB	87X	290.45	275.8	360.6			

FLIGHTPLAN

#	Name	Navaid/Coords/DME	ALT	TOT
1	FYTTR	LSV 269/33 (N36 21.440 W115 41.470)		
2	JAYSN	N36 34.425 W116 02.444		
3	FLUSH	LSV 287/73 (N36 50.800 W116 20.270)		
4	GARTH	LSV 302/90 (N37 17.960 W116 21.260)		
5	BELTED PK	N37 34 W116 04.500		
6	T71.09	N37 36.017 W116 56.585	4731	
7	MOOSE	LSV 016/94 (N37 36.770 W114 04.420)		
8	TIMBR	LSV 011/33 (N36 45 W114 44.580)		
9	ARCOE	LSV 357/30 (N36 44.260 W114 55.020)		

NOTES

71-09 Sa-3 Site

OTHER FLIGHTS

Callsign	Mission	Airframe	Freq	TCN	Grpld	Laser
Edelweiss 1	Training	1x F-16C	134.5	1/64		171X
AO	NTTR	Task	Departure / Recovery Training			

RADIO CHANNELS

#	Freq	Name
1		Flight/Squadron specific
2	289.4	Nellis Clearance Delivery
3	275.8	Nellis Ground
4	327.0	Nellis Tower
5	385.4	Nellis Approach/Departure West
6	273.55	Nellis Approach/Departure East
7	317.525	Nellis Control -- Sally
8	254.4	Nellis Control-- Lee
9	305.6	SOF Bullseye
10	343.725	EMERGENCY SINGLE FRQ
11	270.1	Nellis ATIS
12	360.625	Creech AFB Tower
13	250.1	HAVE QUICK 13
14	251.1	HAVE QUICK 14
15	252.1	HAVE QUICK 15
16	377.8	Blackjack
17	265.0	KC-135 AR-641A
18	360.8	KC-135MPRS AR-635
19	319.8	KC-135MPRS AR-625
20	300.05	KC-135 AR-231V

RAMROD

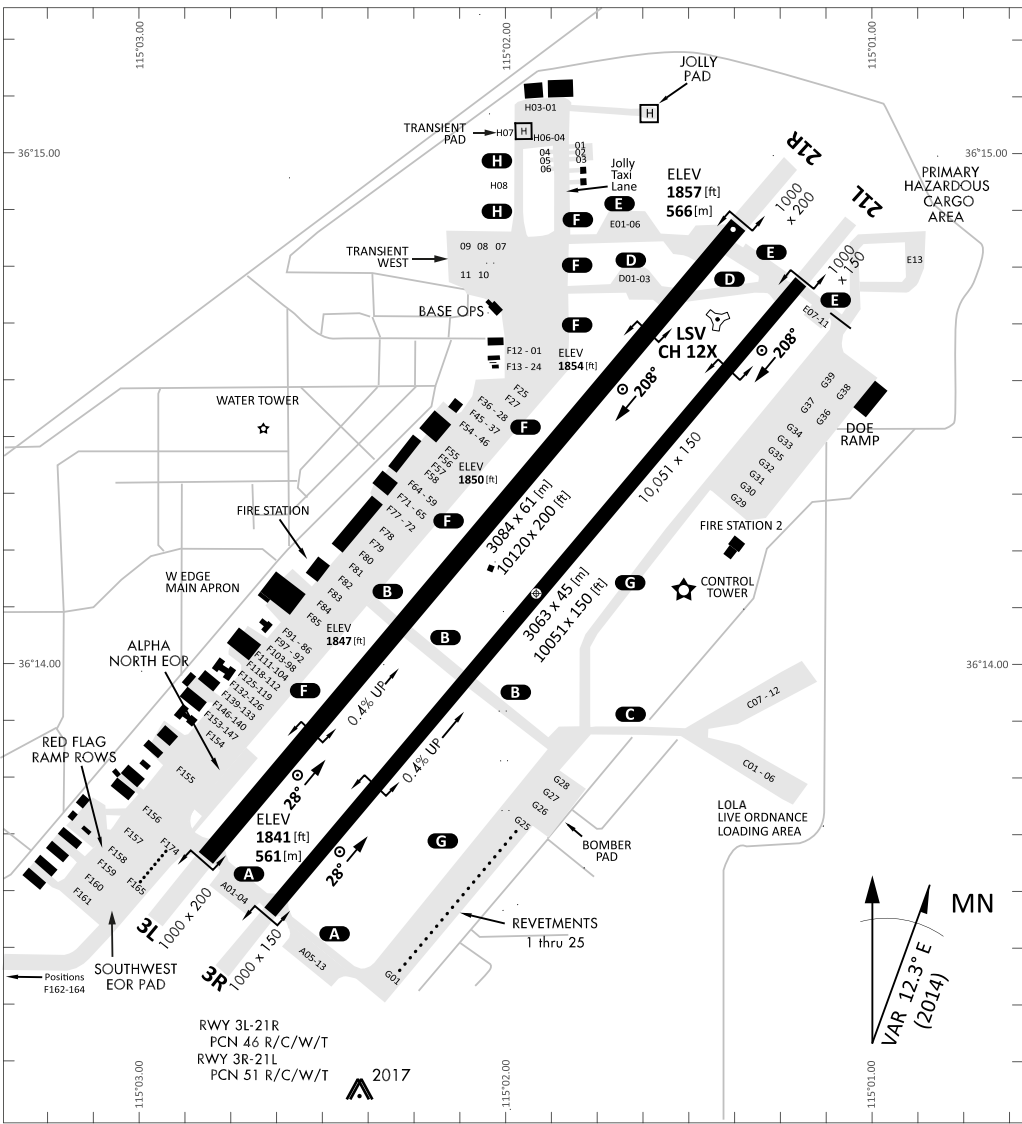
0	1	2	3	4	5	6	7	8	9
R	E	D	U	C	T	I	O	N	S

KTC 1400 C

	0	1	2	3	4	5	6	7	8	9
A	FDEJ	CIA	SNO	WP	QX	LMK	RU	VT	GH	BY
B	TEMP	RUN	IYG	VA	KL	OQB	SW	XF	DH	CJ
C	SNKR	QBI	FAL	HJ	TW	CVE	XM	PD	YG	OU
D	KPHC	WBA	JVO	XU	MI	ETY	NG	DS	FQ	RL
E	HBCF	UGI	TEJ	VK	DR	YNW	LQ	SA	MX	PO
F	YHGR	VLW	FNX	SB	JM	ECP	KI	UO	AQ	DT
G	XRKI	EAS	TWH	PV	UM	YON	BQ	JD	LG	CF
H	CWRM	OKI	LET	SU	DQ	GJN	VH	PY	BF	XA
I	TIEP	LDY	QWS	XA	FB	JRK	HC	NU	VM	OG
J	KVGP	MDC	TAL	JR	UI	NSW	YB	XH	OQ	EF
K	LCBR	TEM	OWS	YI	QF	JHK	XN	AU	GP	DV
L	EANU	CBV	LGS	YH	RX	JWT	QP	IM	OK	DF
M	JOFC	TVH	SLU	WI	PE	YDX	NA	RQ	KB	GM
N	PSQV	YTO	JIB	WA	UC	FLH	DR	NM	GX	KE
O	NWHU	XSG	LKC	RT	YA	JVO	FM	EB	PQ	DI
P	AFKQ	RXV	UED	GI	BC	OPM	YJ	SN	WH	LT
Q	SLHY	TPF	OWN	JX	VC	EQB	AG	UI	DM	RK
R	LVCD	BNG	PKU	QT	RE	XSH	OI	FY	JM	AW
S	XKUV	TYR	ASG	WD	PN	IOC	LQ	EB	JH	FM
T	LKTQ	HIS	PEY	VF	AM	XJW	CB	NU	RD	OG
U	AFOT	CBI	EDJ	PV	YM	SLR	GW	QK	XH	NU
V	XHJM	KST	QRF	EG	UC	LOP	WD	IY	NA	VB
W	ACQF	GPY	HSM	NT	IE	DJV	BK	WL	OX	UR
X	CDLV	GRE	PHJ	TW	IM	SQU	XK	AN	FY	BO
Y	IBQF	MTL	HAK	XR	UY	PSD	EC	WJ	NO	VG

NAVAIDS

Id	Name	Channel	Position	Elevation
BCE	Bryce Canyon	75	N3741.35 W11218.23	9040
BIH	Bishop	33	N3722.62 W11821.99	4114
BLD	Boulder	114	N3559.75 W11451.82	3650
BTY	Beatty	94	N3648.54 W11644.86	2925
CDC	Cedar City	120	N3747.24 W11304.90	5463
DAG	Daggett	79	N3457.75 W11634.69	1760
EED	Needles	99	N3445.96 W11428.43	650
GFS	Goffs	91	N3507.87 W11510.59	4019
GRL	Groom Lake	18	N3713.91 W11548.16	4475
HEC	Hector	74	N3447.83 W11627.78	1854
ILC	Wilson Creek	110	N3815.02 W11423.65	9318
INS	Creech AFB	87	N3635.20 W11540.12	3101
LAS	McCarran Intl	116	N3604.78 W11509.59	2142
LSV	Nellis	12	N3614.68 W11501.50	1864
MLF	Milford	58	N3821.62 W11300.79	4977
MMM	Mormon Mesa	90	N3646.16 W11416.65	2120
MVA	Mina	98	N3833.92 W11801.97	7860
OAL	Coale Dale	124	N3800.20 W11746.23	4800
PGS	Peach Springs	57	N3537.48 W11332.67	4754
TPH	Tonopah Muni	119	N3801.84 W11702.01	5330
TQQ	Silverbow	77	N3748.00 W11647.00	5500
UTI	St George	23	N3705.29 W11335.53	2871



RWY 3L-21R
 PCN 46 R/C/W/T
 RWY 3R-21L
 PCN 51 R/C/W/T
 2017

PAR	RWY	CAT	MINIMA		ARP	ELEV	Scale 1:35'500	
	21L	A B D E	2057 - 0.8 200 (200-0.8/1.6)	GS 3°	36° 14.060° N 115° 01.058° W	1857 [ft] 566 [m]	0 300 600 900 1200 1500 [m]	
	3R	A B D E	2057 - 0.8 200 (200-0.8/1.6)	GS 3°			0 1000 2000 3000 4000 5000 [ft]	
SRA	21R	A C D E	2257 - 1.2 350 (350-1.2/1.6)					
	3L	A C D E	2257 - 1.2 350 (350-1.2/1.6)					

RWY	TORA	TODA	ASDA	LDA	PSN	THR	ALS
21L	10051 [ft] 3063 [m]	11051 [ft] 3368 [m]	11051 [ft] 3368 [m]	10051 [ft] 3063 [m]	36°14.043' N	115°01.018' W	⊕
3R	10120 [ft] 3084 [m]	11120 [ft] 3398 [m]	11120 [ft] 3398 [m]	10120 [ft] 3084 [m]	36°13.029' N	115°02.038' W	

ATIS	NELLIS GROUND	NELLIS TOWER	NELLIS CONTROL	TACAN	ILS RWY 21L	NELLIS EAST	NELLIS WEST
270.100 MHz	275.800 121.800	327.000 132.55	317.525	LSV 12X	109.10 Mhz	384.400	385.000

FYTTR THREE DEPARTURE IFR CHART | VALID 2014 LAS VEGAS, NEVADA

ATIS
270.100
NELLIS GROUND
275.800
NELLIS TOWER
327.000
NELLIS CONTROL
317.525
NELLIS DEP/APP EAST
384.400
BLACKJACK
377.800

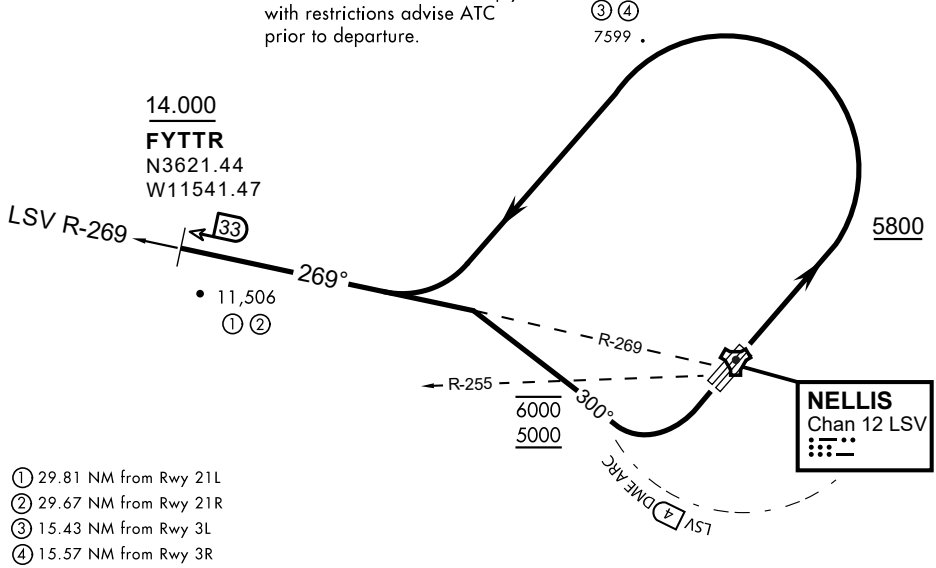


Rwy	Knots	60	120	180	240	300	360
3L (a)	V/V(fpm)	394	788	1182	1576	1970	2364
3R (a)	V/V(fpm)	392	784	1176	1568	1960	2352
21L (b)	V/V(fpm)	388	776	1164	1552	1940	2328
21R (b)	V/V(fpm)	390	780	1170	1560	1950	2340

Minimum Climb Rate

- (a) to 9300
- (b) to 13 500

CAUTION: If unable to comply with restrictions advise ATC prior to departure.



- (1) 29.81 NM from Rwy 21L
- (2) 29.67 NM from Rwy 21R
- (3) 15.43 NM from Rwy 3L
- (4) 15.57 NM from Rwy 3R

DEPARTURE ROUTE DESCRIPTION

TAKEOFF RWY 3L/R

- Fly runway heading until reaching 5,800'.
- Then climbing left turn to intercept LSV TACAN R-269 outbound.
- Cross FYTTR at or above 14,000' or as assigned, then via assigned route.

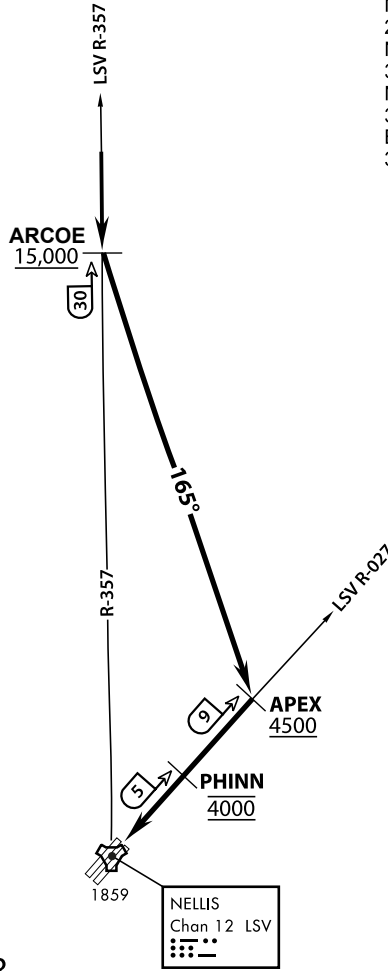
TAKEOFF RWY 21L/21R

- Turn right to intercept LSV TACAN R-269 outbound.
- Remain within LSV 4 DME until joining LSV R-269
- Cross R-255 between 5,000' and 6,000'.
- Cross FYTTR at or above 14,000' or as assigned, then via assigned route.

NOISE ABATEMENT PROCEDURES:

Fly according Nellis Noise Abatement instructions as published

ATIS
 270.100
 NELLIS GROUND
 275.800
 NELLIS TOWER
 327.000
 NELLIS CONTROL
 317.525
 BLACKJACK
 377.800



VMC ONLY

PILOT RESPONSIBLE FOR
TERRAIN AVOIDANCE

APPROACH ROUTE DESCRIPTION

OVERHEAD

Cross ARCOE at or above 15,000 MSL, then heading 165° to APEX.
 Cross APEX at or above 4,500 MSL, report to tower.
 Cross PHINN (LSV 027/5) at 4,000 MSL then descend to 3,500 MSL for Initial.

VFR STRAIGHT IN RWY 21

Cross APEX at 4,000 feet MSL. Descend to be at 3,000 feet MSL at PHINN (LSV 027/5).



INDIAN SPRINGS, NEVADA

TACAN INS Chan 87	APCH CRS 065°	Rwy ldg TDZE 3133	9002 3113
		Arpt Elev 3113	

INDIAN SPRINGS AF AUX (KINS)

▼ * MISSED APPROACH: Straight ahead to INS TACAN, intercept INS R-outbound, cross 17 DME at or above 9500, then direkt KSV TACAN 114

NELLIS CON

CREECH AFB TOWER
118.30 60.60

GND CON

NOT FOR CIVIL USE

FOR USE UNDER BASIC VFR
WEATHER MINIMUMS ONLY

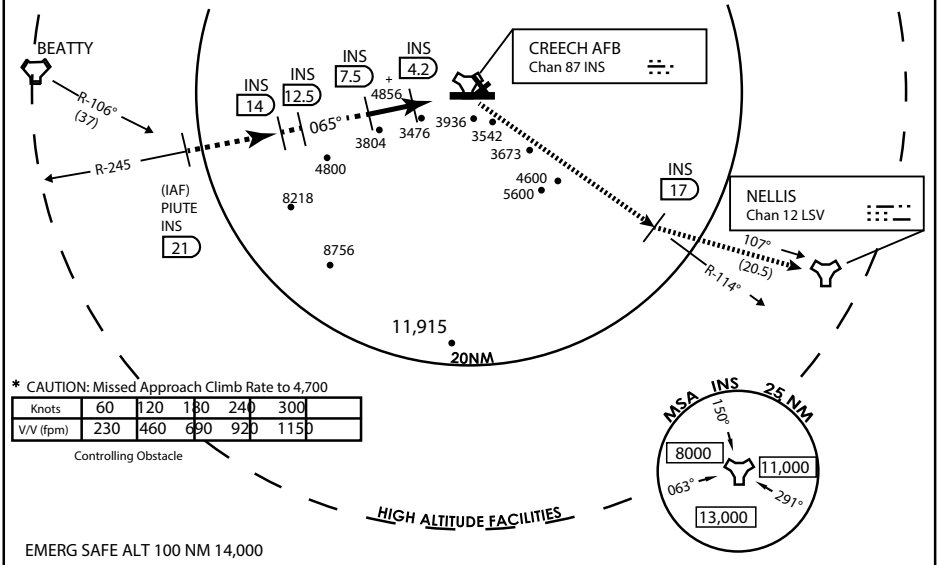
PILOT IS RESPONSIBLE FOR TERRAIN/OBSTACLE AVOIDANCE AND APPROPRIATE VFR CLOUD CLEARANCE FOR ALL

CAUTION: Descent gradients are greater than allowed under standard TERPS criteria and inbound course does not meet straight-in criteria

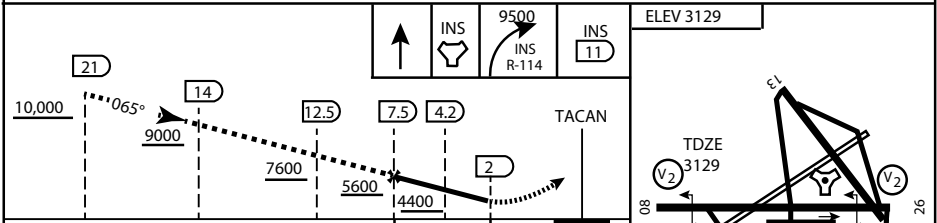
CAUTION: Final approach course crosses Runway centerline at MIDFIELD. Maneuvering left of course required prior to landing. Do not Maneuver farther north than the INS R- 258

Modified by vJaBoG 66 for use with DCS
NOT FOR REAL LIFE NAVIGATION

Modified by vJaBoG 66 for use with DCS
NOT FOR REAL LIFE NAVIGATION



EMERG SAFE ALT 100 NM 14,000



CATEGORY	A	B	C	D	E
S-8	3760-1 ½	627 (700-1 ½)	3760-1¾ 627 (700-1¾)	3760-2 627 (700-2)	3760-2¼ 627 (700-2¼)
CIRCLING	NOT AUTHORIZED				

MIRL Rwy 8-26

CITY OF INDIAN, NEVADA

INDIAN SPRINGS AF AUX (KINS)

(FOR DAY VFR USE ONLY)



AIRPORT DIAGRAM

476 VFG

CREECH AFB (KINS)
INDIAN SPRINGS, NEVADA

ATIS
 122.5
 CREECH TOWER
 118.4 360.7 38.65
 GND CON
 118.3 275.8
 CLNC DEL

115°42'W

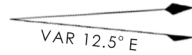
FIELD
 ELEV
 3127

80

972 X 150

HOT CARGO PAD

BAK-12


 VAR 12.5° E

WEST EOR

115°41'W

476 VFG JAN 2019

476 VFG JAN 2019

CONTROL TOWER
 BASE OPS

RPA LOLA WEST

RPA LOLA EAST

LOLA / HUNG ORDNANCE

199 X 100
 ELEV 3127
 RUNWAY 31/13
 MQ/RQ-1 ONLY

258.5°

860 X 100

313.8°

4064 X 100

115°40'W

BAK-12

ELEV 3127

EAST EOR

1030 X 150

26

AIRPORT DIAGRAM

INDIAN SPRINGS, NEVADA
CREECH AFB (KINS)