

**MISSION DATA CARD**

OPORD		Callsign		Mission		Date/Time		
3263/2024		Monster 2		Training		300000SEP24		
Task							Freq	
AO	R62						131.25	
Departure				Recovery				
FYTTR LOW				STRYK				
#	Callsign		Pilot		IFF	TCN	LSR	NET
-1	Monster 2-1		Toolface		1541	1Y	1651	25/01
-2	Monster 2-2		addiks		1542	64Y	1652	25/02

**LOADOUT**

A/A	2xA9M					GUN	100% CM
A/G	4xC105, 7M282L					CHF	120
POD	A184, TGP					FLR	360
TKS						FUEL	75%

**TOLD**

	Takeoff	Target	Joker	Bingo	Land
FUEL	8315				

**AIRBASES**

	Name		TCN	ATIS	GND	TWR	RWY	Elev	ILS
Dep	Nellis AFB		12X	270.1	275.8	327.0	21L	1850	109.1
Arr	Nellis AFB		12X	270.1	275.8	327.0	21L	1850	109.1
Div	Creech AFB		87X	290.45	275.8	360.6			

**FLIGHTPLAN**

#	Name	Navaid/Coords/DME	ALT	TOT
1	FLEX	LSV 337/5 (N36 18.620 W115 02.360)		
2	FYTTR	LSV 269/33 (N36 21.440 W115 41.470)		
3	T62.56	N36 46.862 W115 26.760	12000	
4	Creech AFB	N36 35.200 W115 40.120	4000	
5	STRYK	LSV 282/26 (N36 25.620 W115 30.700)	9500	
6	JORDN	N36 23.869 W115 14.590	9500	
7	GASS PEAK	LSV 309/12 (N36 24.140 W115 10.660)	8500	
8	SIMNS	LSV 276/8 (N36 17.340 W115 10.750)	5500	
9	CRAIG	LSV 263/5.5 (N36 15.250 W115 08.270)	5000	
10	APEX	LSV 027/09 (N36 21.580 W114 54.340)	4500	

**COMMS**

Radio	Usage
1	131.25
2	2 - 4 - 16 - 2 - 4
3	32.00
4	288.800 268.000

**OTHER FLIGHTS**

Callsign	Mission	Airframe	Freq	TCN	Grpld	Laser
T-Rex 2	Training	2x A-10C	132.25	1/64	25	165X
AO	R64	Task				

**RADIO CHANNELS**

#	Freq	Name
1		Flight/Squadron specific
2	289.4	Nellis Clearance Delivery
3	275.8	Nellis Ground
4	327.0	Nellis Tower
5	385.4	Nellis Approach/Departure West
6	273.55	Nellis Approach/Departure East
7	317.525	Nellis Control -- Sally
8	254.4	Nellis Control-- Lee
9	305.6	SOF Bullseye
10	343.725	EMERGENCY SINGLE FRQ
11	270.1	Nellis ATIS
12	360.625	Creech AFB Tower
13	250.1	HAVE QUICK 13
14	251.1	HAVE QUICK 14
15	252.1	HAVE QUICK 15
16	377.8	Blackjack
17	265.0	KC-135 AR-641A
18	360.8	KC-135MPRS AR-635
19	319.8	KC-135MPRS AR-625
20	300.05	KC-135 AR-231V

**RAMROD**

0	1	2	3	4	5	6	7	8	9
B	E	C	O	M	I	N	G	L	Y

**KTC 1400 C**

	0	1	2	3	4	5	6	7	8	9
A	XTCP	AJB	DFE	OS	WN	UYM	HL	RI	QG	KV
B	GIMU	ADT	SOY	NC	KX	WHR	LF	BV	JQ	PE
C	IYPN	AMX	DQB	TK	GJ	UHR	WO	CS	VE	LF
D	JHXY	APB	RCI	VF	KD	TUL	OG	SQ	NE	MW
E	KANG	DWY	CLR	QE	JS	IFT	VB	MO	HX	PU
F	LDWF	UAO	RXQ	BE	KS	YHJ	VP	CN	TM	GI
G	FBES	RAQ	CLK	PO	GH	JYW	DM	XU	NT	VI
H	TSFV	OKJ	XGA	NV	MP	IQR	DU	BH	YC	LE
I	WXUF	LSD	BQA	HC	IG	MKR	EO	NT	YJ	VP
J	HJWX	LIC	QNE	DM	GK	VOA	BT	SP	FY	RU
K	EDTR	WSG	BYQ	VA	OP	HCM	KF	XN	LI	JU
L	WTUF	LOQ	SAK	MG	JE	XBI	RC	HY	PN	DV
M	ESTK	VBP	LDR	IN	OM	GYF	JX	HU	AW	QC
N	IPKO	XQR	JFD	CT	UB	HVS	YW	AE	LG	NM
O	OVYL	ICX	JTU	FH	RB	EAQ	KP	DS	WN	GM
P	LYCA	VNR	ETK	GD	XQ	MWI	JU	FH	OP	SB
Q	RWPA	NXC	JLV	KQ	OG	UFH	MY	ES	DB	TI
R	QVUL	CAS	BYT	KG	PO	REH	XW	DJ	MF	IN
S	DHKM	VGP	QAR	CO	FS	TEY	UI	NL	BJ	WX
T	EJOB	TMP	WAQ	UK	VN	RSG	HL	CY	ID	FX
U	ROFP	IJQ	TKC	MS	WN	YGH	VL	DX	AB	EU
V	XHYA	SUG	RLQ	PI	KO	BJC	FM	VT	DN	EW
W	BCEM	FDP	ARU	OK	YQ	INW	VL	SJ	TH	XG
X	SWXV	KYL	OHC	FA	JG	EMB	DI	QP	RT	UN
Y	IAEM	JNT	QBK	HG	PR	XWO	CF	US	VY	LD

**NAVAIDS**

<b>Id</b>	<b>Name</b>	<b>Channel</b>	<b>Position</b>	<b>Elevation</b>
BCE	Bryce Canyon	75	N3741.35 W11218.23	9040
BIH	Bishop	33	N3722.62 W11821.99	4114
BLD	Boulder	114	N3559.75 W11451.82	3650
BTY	Beatty	94	N3648.54 W11644.86	2925
CDC	Cedar City	120	N3747.24 W11304.90	5463
DAG	Daggett	79	N3457.75 W11634.69	1760
EED	Needles	99	N3445.96 W11428.43	650
GFS	Goffs	91	N3507.87 W11510.59	4019
GRL	Groom Lake	18	N3713.91 W11548.16	4475
HEC	Hector	74	N3447.83 W11627.78	1854
ILC	Wilson Creek	110	N3815.02 W11423.65	9318
INS	Creech AFB	87	N3635.20 W11540.12	3101
LAS	McCarran Intl	116	N3604.78 W11509.59	2142
LSV	Nellis	12	N3614.68 W11501.50	1864
MLF	Milford	58	N3821.62 W11300.79	4977
MMM	Mormon Mesa	90	N3646.16 W11416.65	2120
MVA	Mina	98	N3833.92 W11801.97	7860
OAL	Coale Dale	124	N3800.20 W11746.23	4800
PGS	Peach Springs	57	N3537.48 W11332.67	4754
TPH	Tonopah Muni	119	N3801.84 W11702.01	5330
TQQ	Silverbow	77	N3748.00 W11647.00	5500
UTI	St George	23	N3705.29 W11335.53	2871



RWY 3L-21R  
 PCN 46 R/C/W/T  
 RWY 3R-21L  
 PCN 51 R/C/W/T  
 2017

PAR	RWY	CAT	MINIMA		ARP	ELEV	Scale 1:35'500	
	21L	A B D E	2057 - 0.8 200	(200-0.8/1.6) GS 3°	36° 14.060° N 115° 01.058° W	1857 [ft] 566 [m]	0	300
	3R	A B D E	2057 - 0.8 200	(200-0.8/1.6) GS 3°			600	900
	21R	A C D E	2257 - 1.2 350	(350-1.2/1.6)			1200	1500 [m]
	3L	A C D E	2257 - 1.2 350	(350-1.2/1.6)			0	1000
							2000	3000
							4000	5000 [ft]

RWY	TORA	TODA	ASDA	LDA	PSN	THR	ALS
21L	10051 [ft] 3063 [m]	11051 [ft] 3368 [m]	11051 [ft] 3368 [m]	10051 [ft] 3063 [m]	36°14.043' N	115°01.018' W	⊕
3R	10120 [ft] 3084 [m]	11120 [ft] 3398 [m]	11120 [ft] 3398 [m]	10120 [ft] 3084 [m]	36°13.029' N	115°02.038' W	

ATIS	NELLIS GROUND	NELLIS TOWER	NELLIS CONTROL	TACAN	ILS RWY 21L	NELLIS EAST	NELLIS WEST
270.100 MHz	275.800   121.800	327.000   132.55	317.525	LSV 12X	109.10 Mhz	384.400	385.000

# FYTTR LOW VISUAL OPERATION CHART | VALID 2014

ATIS  
270.100  
NELLIS GROUND  
275.800  
NELLIS TOWER  
327.000  
NELLIS CONTROL  
317.525  
NELLIS DEP/APP EAST  
384.400  
BLACKJACK  
377.800

CAUTION: If unable to comply  
with restrictions advise ATC  
prior to departure.



## VMC ONLY

### PILOT RESPONSIBLE FOR TERRAIN AVOIDANCE

① 4 NM from RWY 3L/R

**BEATTY**  
Chan 94 BTY

RANGE 64/65    RANGE 63

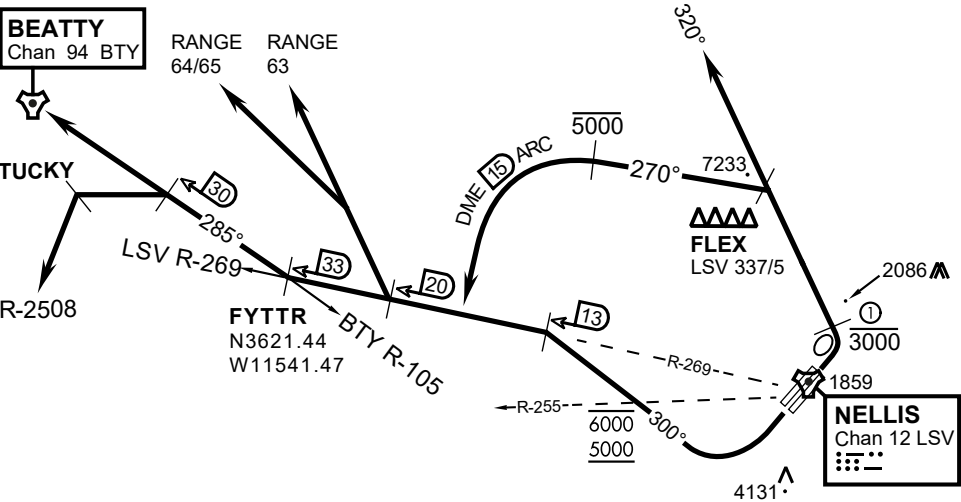
TUCKY

R-2508

**FYTTR**  
N3621.44  
W11541.47

**FLEX**  
LSV 337/5

**NELLIS**  
Chan 12 LSV



### DEPARTURE ROUTE DESCRIPTION

#### TAKEOFF RWY 3L/R:

- Remain below 3,000' MSL until north of Race Track and turned westbound.
- Turn left within 4NM of Nellis direct FLEX. Fly north of FLEX and turn left heading 270°.
- Intercept LSV 15 DME ARC at or below 5,000' MSL.
- ARC south, intercept LSV R-269 outbound. Maintain VFR.

#### TAKEOFF RWY 21L/21R:

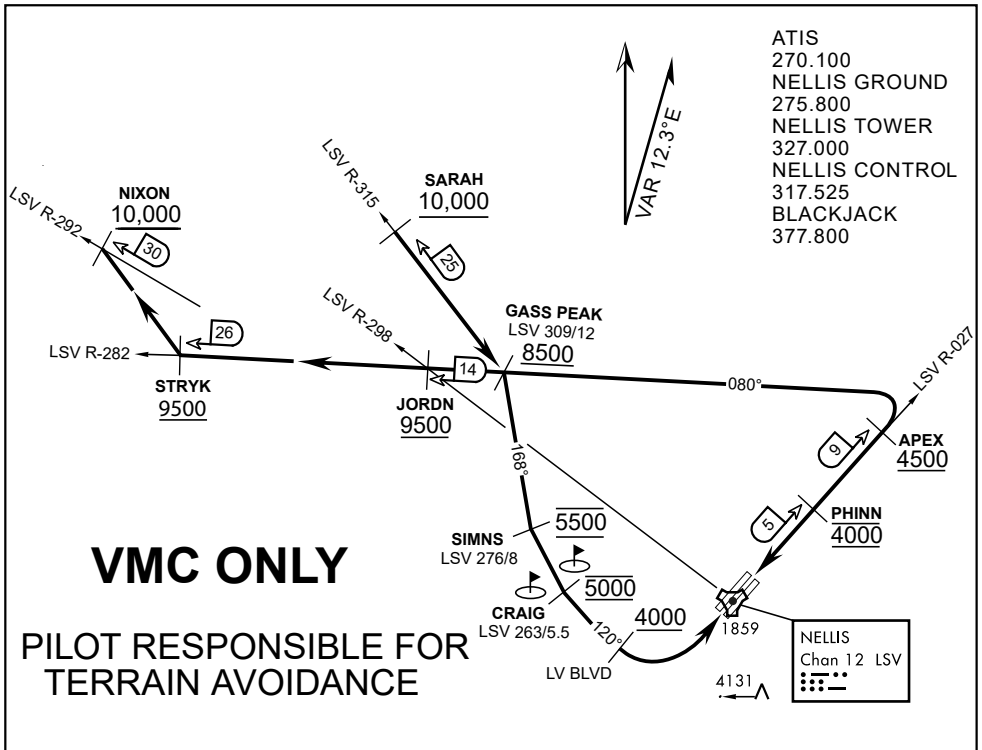
- Follow Noise Abatement Procedures.
- Fly runway heading until past Golf Course, turn right heading 300°.
- Cross LSV R-255 between 5,000' and 6,000' , intercept and proceed outbound on the LSV R-269.Recommend climb to 8,500' MSL or appropriate VFR altitude for overflight of North Las Vegas Training Area. Fly routing for appr. mission/transition.

#### TRANSITIONS:

- R-4806:** Turn right at the LSV 269/20 direct to assigned ranges.
- BEATTY:** Turn right at FYTTR direct BTY via the BTY R-105
- R-2508:** Turn right at the FYTTR, intercept the BTY 105/30, direct TUCKY, then direct R-2508

### FYTTR DEPARTURE AND TRANSITIONS (FYTTR LOW)





- ATIS
- 270.100
- NELLIS GROUND
- 275.800
- NELLIS TOWER
- 327.000
- NELLIS CONTROL
- 317.525
- BLACKJACK
- 377.800

**VMC ONLY**

**PILOT RESPONSIBLE FOR TERRAIN AVOIDANCE**

**APPROACH ROUTE DESCRIPTION**

**APPROACH RWY 3L/R**

Cross STRYK at or above 9,500' MSL, proceed direct GASS PEAK. Cross JORDN at or above 9,500' MSL, cross GASS PEAK at or above 8,500' MSL. Proceed direct SIMNS and cross at 5,500' MSL. Cross Las Vegas Blvd at or above 4,000' MSL then to 3,500' MSL for Initial. Remain within 4 DME if LSV on turn to final.

**VFR STRAIGHT-IN RWY 3L/R**

Depart CRAIG & descend to be at 3,000' MSL by Las Vegas Blvd. Do not descend below 3,000' MSL until within 5 DME of LSV or 4 NM of the runway on turn to final.

**APPROACH RWY 21L/R**

Cross STRYK at or above 9,500' MSL, proceed direct GASS PEAK. Cross JORDN at or above 9,500' MSL, cross GASS PEAK at or above 8,500' MSL. Cross APEX at or above 4,500' MSL then direct 5NM initial. Descend to cross PHINN at 4,000' MSL, Inside 5 NM descend to 3,500' MSL.

**VFR STRAIGHT-IN RWY 21L/R**

Cross APEX at 4,000' MSL. Descend to be at 3,000' MSL at PHINN. Descend to 3,000' MSL at LSV 027/5.

**RANGE 63B EXIT**

**SOUTH:** Via NIXON at or above 10,000' MSL, then direct STRYK.

**EAST:** Via SARAH at or above 10,000' MSL, then direct GASS PEAK.



INDIAN SPRINGS, NEVADA

TACAN INS Chan 87	APCH CRS 065°	Rwy ldg TDZE 3133	9002 3113
		Arpt Elev 3113	

INDIAN SPRINGS AF AUX (KINS)

**▼** \* MISSED APPROACH: Straight ahead to INS TACAN, intercept INS R-outbound, cross 17 DME at or above 9500, then direkt KSV TACAN 114

NELLIS CON

CREECH AFB TOWER  
118.30 60.60

GND CON

**NOT FOR CIVIL USE**

FOR USE UNDER BASIC VFR  
WEATHER MINIMUMS ONLY

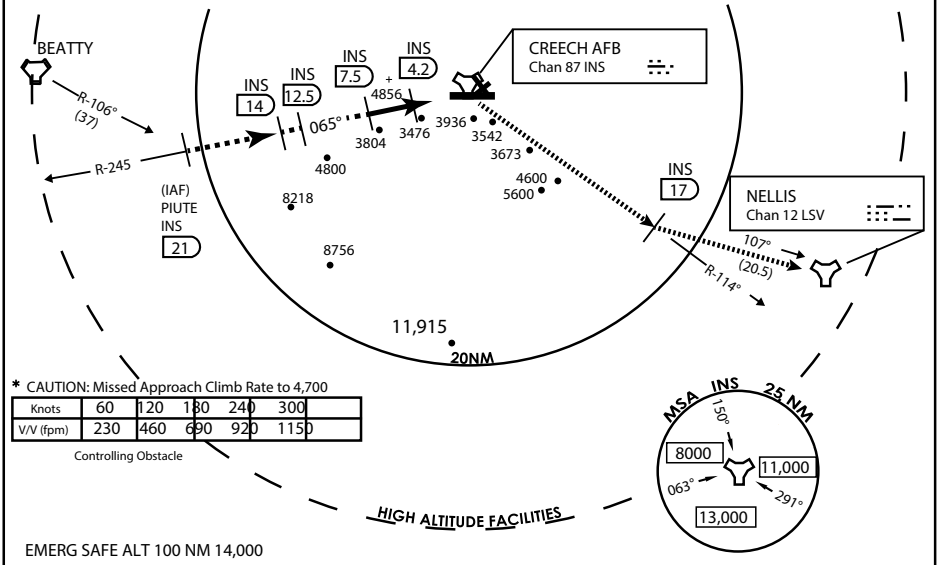
PILOT IS RESPONSIBLE FOR TERRAIN/OBSTACLE AVOIDANCE AND APPROPRIATE VFR CLOUD CLEARANCE FOR ALL

CAUTION: Descent gradients are greater than allowed under standard TERPS criteria and inbound course does not meet straight-in criteria

CAUTION: Final approach course crosses Runway centerline at MIDFIELD. Maneuvering left of course required prior to landing. Do not Maneuver farther north than the INS R- 258

Modified by viaBog 66 for use with DCS  
NOT FOR REAL LIFE NAVIGATION

Modified by viaBog 66 for use with DCS  
NOT FOR REAL LIFE NAVIGATION



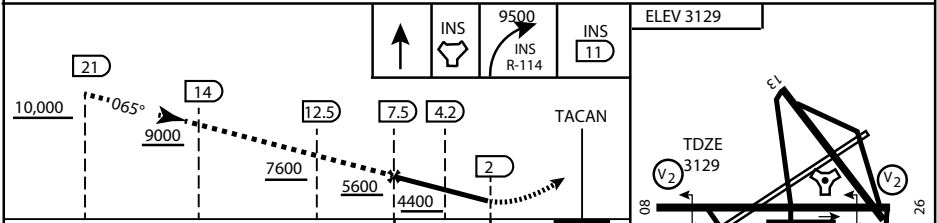
\* CAUTION: Missed Approach Climb Rate to 4,700

Knots	60	120	180	240	300
V/V (fpm)	230	460	690	920	1150

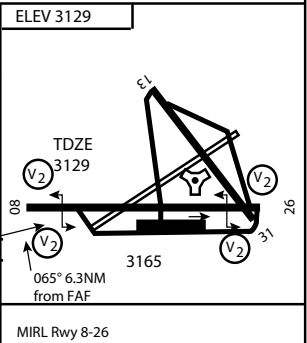
Controlling Obstacle

HIGH ALTITUDE FACILITIES

EMERG SAFE ALT 100 NM 14,000



CATEGORY	A	B	C	D	E
S-8	3760-1 1/2	627 (700-1 1/2)	3760-1 3/4 627 (700-1 3/4)	3760-2 627 (700-2)	3760-2 1/4 627 (700-2 1/4)
CIRCLING	NOT AUTHORIZED				



MIRL Rwy 8-26

CITY OF INDIAN, NEVADA

INDIAN SPRINGS AF AUX (KINS)

(FOR DAY VFR USE ONLY)



# AIRPORT DIAGRAM

476 VFG

CREECH AFB (KINS)  
INDIAN SPRINGS, NEVADA

ATIS  
 122.5  
 CREECH TOWER  
 118.4 360.7 38.65  
 GND CON  
 118.3 275.8  
 CLNC DEL

115°42'W

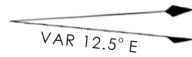
FIELD  
 ELEV  
 3127

80

972 X 150

HOT CARGO PAD

BAK-12

  
 VAR 12.5° E

WEST EOR

115°41'W

476 VFG JAN 2019

476 VFG JAN 2019

CONTROL TOWER  
 BASE OPS

RPA LOLA WEST

RPA LOLA EAST

LOLA / HUNG ORDNANCE

199 X 100  
 ELEV 3127  
 RUNWAY 31/13  
 MQ/RQ-1 ONLY

258.5°

860 X 100  
 313.8°

4064 X 100  
 133.8°

BAK-12

ELEV 3127

115°40'W

EAST EOR

ELEV 3127

1030 X 150

26

# AIRPORT DIAGRAM

INDIAN SPRINGS, NEVADA  
CREECH AFB (KINS)