

**MISSION DATA CARD**

|           |          |          |       |                             |     |             |     |     |
|-----------|----------|----------|-------|-----------------------------|-----|-------------|-----|-----|
| OPORD     |          | Callsign |       | Mission                     |     | Date/Time   |     |     |
| 3262/2024 |          | T-Rex 2  |       | Training                    |     | 300000SEP24 |     |     |
| Task      |          |          |       |                             |     | Freq        |     |     |
| AO        | R64      |          |       |                             |     | 132.25      |     |     |
| Departure |          |          |       | Recovery                    |     |             |     |     |
| FYTTR LOW |          |          |       | HI-ILS or LOC/DME Z RWY 21L |     |             |     |     |
| #         | Callsign |          | Pilot |                             | IFF | TCN         | LSR | NET |

**LOADOUT**

|     |                |  |  |  |      |         |  |
|-----|----------------|--|--|--|------|---------|--|
| A/A | 2xA9M          |  |  |  | GUN  | 100% CM |  |
| A/G | 4xC105, 7M282L |  |  |  | CHF  | 120     |  |
| POD | A184, TGP      |  |  |  | FLR  | 360     |  |
| TKS |                |  |  |  | FUEL | 75%     |  |

**TOLD**

|      |         |        |       |       |      |
|------|---------|--------|-------|-------|------|
|      | Takeoff | Target | Joker | Bingo | Land |
| FUEL | 8315    |        |       |       |      |

**AIRBASES**

|     |            |     |        |       |       |     |      |       |
|-----|------------|-----|--------|-------|-------|-----|------|-------|
|     | Name       | TCN | ATIS   | GND   | TWR   | RWY | Elev | ILS   |
| Dep | Nellis AFB | 12X | 270.1  | 275.8 | 327.0 | 21L | 1850 | 109.1 |
| Arr | Nellis AFB | 12X | 270.1  | 275.8 | 327.0 | 21L | 1850 | 109.1 |
| Div | Creech AFB | 87X | 290.45 | 275.8 | 360.6 |     |      |       |

**FLIGHTPLAN**

| #  | Name       | Navaid/Coords/DME                    | ALT   | TOT |
|----|------------|--------------------------------------|-------|-----|
| 1  | FLEX       | LSV 337/5 (N36 18.620 W115 02.360)   |       |     |
| 2  | FYTTR      | LSV 269/33 (N36 21.440 W115 41.470)  |       |     |
| 3  | T64.171    | N36 54.181 W115 36.857               | 12000 |     |
| 4  | Creech AFB | N36 35.200 W115 40.120               | 4000  |     |
| 5  | STRYK      | LSV 282/26 (N36 25.620 W115 30.700)  | 9500  |     |
| 6  | JORDN      | N36 23.869 W115 14.590               | 9500  |     |
| 7  | GASS PEAK  | LSV 309/12 (N36 24.140 W115 10.660)  | 8500  |     |
| 8  | SIMNS      | LSV 276/8 (N36 17.340 W115 10.750)   | 5500  |     |
| 9  | CRAIG      | LSV 263/5.5 (N36 15.250 W115 08.270) | 5000  |     |
| 10 | APEX       | LSV 027/09 (N36 21.580 W114 54.340)  | 4500  |     |

**COMMS**

| Radio | Usage              |
|-------|--------------------|
| 1     | 132.25             |
| 2     | 2 - 4 - 16 - 2 - 4 |
| 3     | 32.00              |
| 4     | 288.800 268.000    |

**OTHER FLIGHTS**

| Callsign  | Mission  | Airframe | Freq   | TCN  | GrpId | Laser |
|-----------|----------|----------|--------|------|-------|-------|
| Monster 2 | Training | 2x A-10C | 131.25 | 1/64 | 25    | 165X  |
| AO        | R62      | Task     |        |      |       |       |

**RADIO CHANNELS**

| #  | Freq    | Name                           |
|----|---------|--------------------------------|
| 1  |         | Flight/Squadron specific       |
| 2  | 289.4   | Nellis Clearance Delivery      |
| 3  | 275.8   | Nellis Ground                  |
| 4  | 327.0   | Nellis Tower                   |
| 5  | 385.4   | Nellis Approach/Departure West |
| 6  | 273.55  | Nellis Approach/Departure East |
| 7  | 317.525 | Nellis Control -- Sally        |
| 8  | 254.4   | Nellis Control-- Lee           |
| 9  | 305.6   | SOF Bullseye                   |
| 10 | 343.725 | EMERGENCY SINGLE FRQ           |
| 11 | 270.1   | Nellis ATIS                    |
| 12 | 360.625 | Creech AFB Tower               |
| 13 | 250.1   | HAVE QUICK 13                  |
| 14 | 251.1   | HAVE QUICK 14                  |
| 15 | 252.1   | HAVE QUICK 15                  |
| 16 | 377.8   | Blackjack                      |
| 17 | 265.0   | KC-135 AR-641A                 |
| 18 | 360.8   | KC-135MPRS AR-635              |
| 19 | 319.8   | KC-135MPRS AR-625              |
| 20 | 300.05  | KC-135 AR-231V                 |

**RAMROD**

|   |   |   |   |   |   |   |   |   |   |
|---|---|---|---|---|---|---|---|---|---|
| 0 | 1 | 2 | 3 | 4 | 5 | 6 | 7 | 8 | 9 |
| B | E | C | O | M | I | N | G | L | Y |

**KTC 1400 C**

|   | 0    | 1   | 2   | 3  | 4  | 5   | 6  | 7  | 8  | 9  |
|---|------|-----|-----|----|----|-----|----|----|----|----|
| A | XTCP | AJB | DFE | OS | WN | UYM | HL | RI | QG | KV |
| B | GIMU | ADT | SOY | NC | KX | WHR | LF | BV | JQ | PE |
| C | IYPN | AMX | DQB | TK | GJ | UHR | WO | CS | VE | LF |
| D | JHXY | APB | RCI | VF | KD | TUL | OG | SQ | NE | MW |
| E | KANG | DWY | CLR | QE | JS | IFT | VB | MO | HX | PU |
| F | LDWF | UAO | RXQ | BE | KS | YHJ | VP | CN | TM | GI |
| G | FBES | RAQ | CLK | PO | GH | JYW | DM | XU | NT | VI |
| H | TSFW | OKJ | XGA | NV | MP | IQR | DU | BH | YC | LE |
| I | WXUF | LSD | BQA | HC | IG | MKR | EO | NT | YJ | VP |
| J | HJWX | LIC | QNE | DM | GK | VOA | BT | SP | FY | RU |
| K | EDTR | WSG | BYQ | VA | OP | HCM | KF | XN | LI | JU |
| L | WTUF | LOQ | SAK | MG | JE | XBI | RC | HY | PN | DV |
| M | ESTK | VBP | LDR | IN | OM | GYF | JX | HU | AW | QC |
| N | IPKO | XQR | JFD | CT | UB | HVS | YW | AE | LG | NM |
| O | OVYL | ICX | JTU | FH | RB | EAQ | KP | DS | WN | GM |
| P | LYCA | VNR | ETK | GD | XQ | MWI | JU | FH | OP | SB |
| Q | RWPA | NXC | JLV | KQ | OG | UFH | MY | ES | DB | TI |
| R | QVUL | CAS | BYT | KG | PO | REH | XW | DJ | MF | IN |
| S | DHKM | VGP | QAR | CO | FS | TEY | UI | NL | BJ | WX |
| T | EJOB | TMP | WAQ | UK | VN | RSG | HL | CY | ID | FX |
| U | ROFP | IJQ | TKC | MS | WN | YGH | VL | DX | AB | EU |
| V | XHYA | SUG | RLQ | PI | KO | BJC | FM | VT | DN | EW |
| W | BCEM | FDP | ARU | OK | YQ | INW | VL | SJ | TH | XG |
| X | SWXV | KYL | OHC | FA | JG | EMB | DI | QP | RT | UN |
| Y | IAEM | JNT | QBK | HG | PR | XWO | CF | US | VY | LD |

**NAVAIDS**

| <b>Id</b> | <b>Name</b>   | <b>Channel</b> | <b>Position</b>    | <b>Elevation</b> |
|-----------|---------------|----------------|--------------------|------------------|
| BCE       | Bryce Canyon  | 75             | N3741.35 W11218.23 | 9040             |
| BIH       | Bishop        | 33             | N3722.62 W11821.99 | 4114             |
| BLD       | Boulder       | 114            | N3559.75 W11451.82 | 3650             |
| BTY       | Beatty        | 94             | N3648.54 W11644.86 | 2925             |
| CDC       | Cedar City    | 120            | N3747.24 W11304.90 | 5463             |
| DAG       | Daggett       | 79             | N3457.75 W11634.69 | 1760             |
| EED       | Needles       | 99             | N3445.96 W11428.43 | 650              |
| GFS       | Goffs         | 91             | N3507.87 W11510.59 | 4019             |
| GRL       | Groom Lake    | 18             | N3713.91 W11548.16 | 4475             |
| HEC       | Hector        | 74             | N3447.83 W11627.78 | 1854             |
| ILC       | Wilson Creek  | 110            | N3815.02 W11423.65 | 9318             |
| INS       | Creech AFB    | 87             | N3635.20 W11540.12 | 3101             |
| LAS       | McCarran Intl | 116            | N3604.78 W11509.59 | 2142             |
| LSV       | Nellis        | 12             | N3614.68 W11501.50 | 1864             |
| MLF       | Milford       | 58             | N3821.62 W11300.79 | 4977             |
| MMM       | Mormon Mesa   | 90             | N3646.16 W11416.65 | 2120             |
| MVA       | Mina          | 98             | N3833.92 W11801.97 | 7860             |
| OAL       | Coale Dale    | 124            | N3800.20 W11746.23 | 4800             |
| PGS       | Peach Springs | 57             | N3537.48 W11332.67 | 4754             |
| TPH       | Tonopah Muni  | 119            | N3801.84 W11702.01 | 5330             |
| TQQ       | Silverbow     | 77             | N3748.00 W11647.00 | 5500             |
| UTI       | St George     | 23             | N3705.29 W11335.53 | 2871             |



| PAR | RWY | CAT     | MINIMA                             | ARP                             | ELEV                 | Scale 1:35'500                  |
|-----|-----|---------|------------------------------------|---------------------------------|----------------------|---------------------------------|
|     | 21L | A B D E | 2057 - 0.8 200 (200-0.8/1.6) GS 3° | 36° 14.060° N<br>115° 01.058° W | 1857 [ft]<br>566 [m] | 0 300 600 900 1200 1500 [m]     |
|     | 3R  | A B D E | 2057 - 0.8 200 (200-0.8/1.6) GS 3° |                                 |                      | 0 1000 2000 3000 4000 5000 [ft] |
| SRA | 21R | A C D E | 2257 - 1.2 350 (350-1.2/1.6)       |                                 |                      |                                 |
|     | 3L  | A C D E | 2257 - 1.2 350 (350-1.2/1.6)       |                                 |                      |                                 |

| RWY | TORA                | TODA                | ASDA                | LDA                 | PSN          | THR           | ALS |
|-----|---------------------|---------------------|---------------------|---------------------|--------------|---------------|-----|
| 21L | 10051 [ft] 3063 [m] | 11051 [ft] 3368 [m] | 11051 [ft] 3368 [m] | 10051 [ft] 3063 [m] | 36°14.043' N | 115°01.018' W | ⊕   |
| 3R  | 10120 [ft] 3084 [m] | 11120 [ft] 3398 [m] | 11120 [ft] 3398 [m] | 10120 [ft] 3084 [m] | 36°13.029' N | 115°02.038' W |     |
|     |                     |                     |                     |                     |              |               |     |
|     |                     |                     |                     |                     |              |               |     |

| ATIS        | NELLIS GROUND     | NELLIS TOWER     | NELLIS CONTROL | TACAN   | ILS RWY 21L | NELLIS EAST | NELLIS WEST |
|-------------|-------------------|------------------|----------------|---------|-------------|-------------|-------------|
| 270.100 MHz | 275.800   121.800 | 327.000   132.55 | 317.525        | LSV 12X | 109.10 Mhz  | 384.400     | 385.000     |

# FYTTR LOW VISUAL OPERATION CHART | VALID 2014

ATIS  
270.100  
NELLIS GROUND  
275.800  
NELLIS TOWER  
327.000  
NELLIS CONTROL  
317.525  
NELLIS DEP/APP EAST  
384.400  
BLACKJACK  
377.800

CAUTION: If unable to comply with restrictions advise ATC prior to departure.



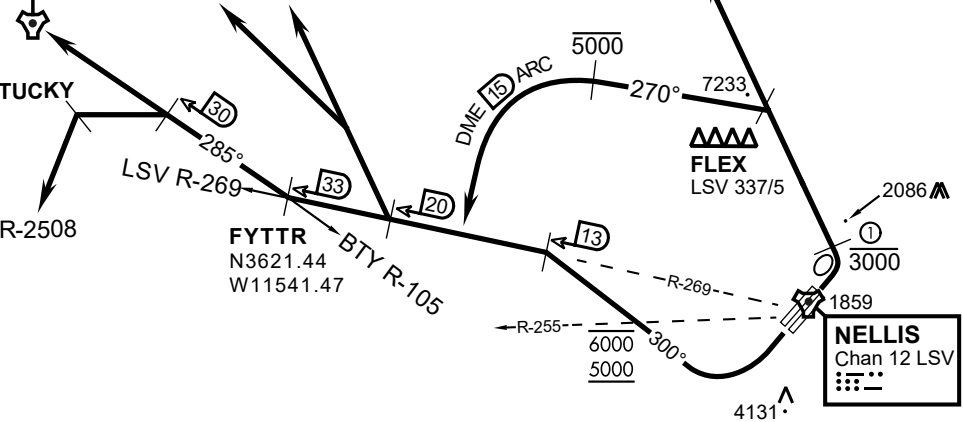
## VMC ONLY

### PILOT RESPONSIBLE FOR TERRAIN AVOIDANCE

① 4 NM from RWY 3L/R

**BEATTY**  
Chan 94 BTY

RANGE 64/65  
RANGE 63



### DEPARTURE ROUTE DESCRIPTION

#### TAKEOFF RWY 3L/R:

- Remain below 3,000' MSL until north of Race Track and turned westbound.
- Turn left within 4NM of Nellis direct FLEX. Fly north of FLEX and turn left heading 270°.
- Intercept LSV R-255 DME ARC at or below 5,000' MSL.
- ARC south, intercept LSV R-269 outbound. Maintain VFR.

#### TAKEOFF RWY 21L/21R:

- Follow Noise Abatement Procedures.
- Fly runway heading until past Golf Course, turn right heading 300°.
- Cross LSV R-255 between 5,000' and 6,000' , intercept and proceed outbound on the LSV R-269.Recommend climb to 8,500' MSL or appropriate VFR altitude for overflight of North Las Vegas Training Area. Fly routing for appr. mission/transition.

#### TRANSITIONS:

- R-4806:** Turn right at the LSV 269/20 direct to assigned ranges.
- BEATTY:** Turn right at FYTTR direct BTY via the BTY R-105
- R-2508:** Turn right at the FYTTR, intercept the BTY 105/30, direct TUCKY, then direct R-2508

## FYTTR DEPARTURE AND TRANSITIONS (FYTTR LOW)

v.15 13NOV20 NTR NAV CHART



LAS VEGAS, NEVADA

# HI-ILS or LOC Z RWY 21L

|                           |                         |           |               |               |
|---------------------------|-------------------------|-----------|---------------|---------------|
| LOC I-DIQ<br><b>109.1</b> | APCH CRS<br><b>209°</b> | Rwy ldg   | 21L           | 21R           |
|                           |                         | TDZE      | <b>10,051</b> | <b>10,120</b> |
|                           |                         | Arpt Elev | <b>1865</b>   | <b>1869</b>   |

JAL-227 (USAF)

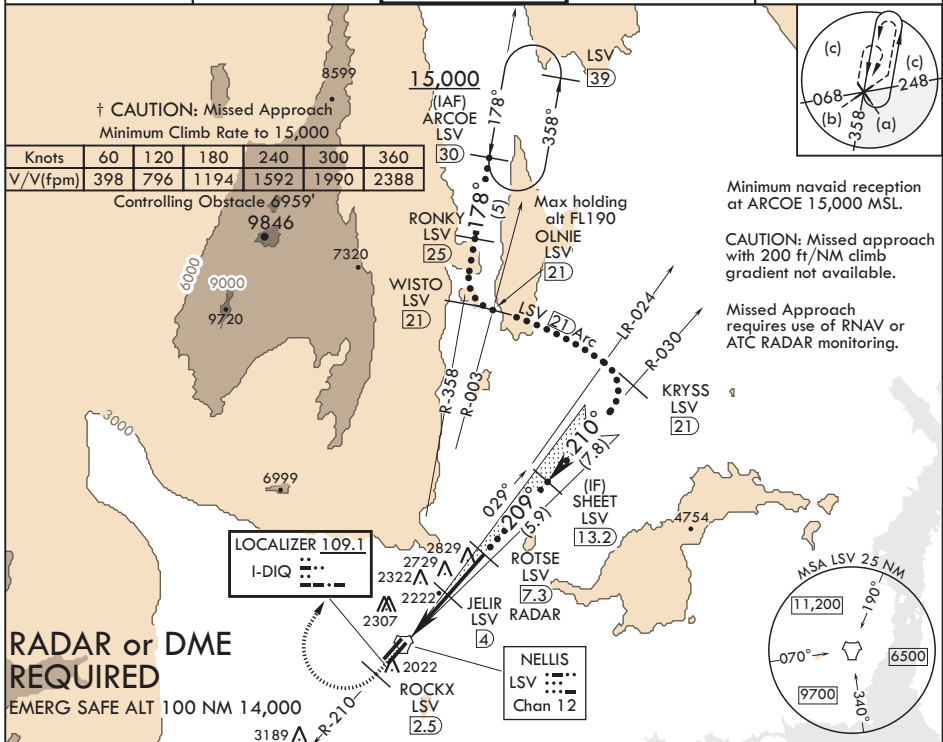
NELLIS AFB (KLSV)

† When ALS inop, increase CAT CDE RVR to 40, vis to 3/4 mile.  
 \*\* When ALS inop, increase CAT CDE vis to 1 3/4 miles.  
 \*\*\* Circling not authorized E of Rwy 3R-21L.



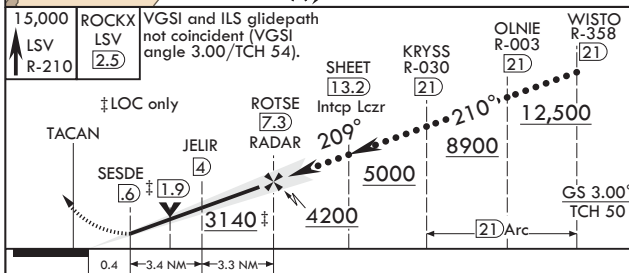
† MISSED APPROACH: Climb to 15,000, intercept LSV TACAN R-210 to 2.5 DME (ROCKX), then climbing right turn heading 020° to join LSV R-358 to ARCOE and hold, continue climb-in-hold to 15,000. Missed approach not for civil use.

|                      |                                 |                              |                               |                                |
|----------------------|---------------------------------|------------------------------|-------------------------------|--------------------------------|
| ATIS<br><b>270.1</b> | APP CON<br><b>124.95 273.55</b> | TOWER<br><b>132.55 327.0</b> | GND CON<br><b>121.8 275.8</b> | CLNC DEL<br><b>120.9 289.4</b> |
|----------------------|---------------------------------|------------------------------|-------------------------------|--------------------------------|



**RADAR or DME REQUIRED**

EMERG SAFE ALT 100 NM 14,000



| CATEGORY      | C                             | D                      | E                       |
|---------------|-------------------------------|------------------------|-------------------------|
| S-ILS 21L*    | 2065/24                       | 200                    | (200-1/2)               |
| S-LOC 21L**   | 2480-1 3/4                    | 615                    | (700-1 3/4)             |
| SIDESTEP 21R  | 2500-1 3/4                    | 631                    | (700-1 3/4)             |
| ⊠ CIRCLING*** | 2620-2 1/4<br>751 (800-2 1/4) | 2840-3<br>971 (1000-3) | 3040-3<br>1171 (1200-3) |

|  |      |      |      |      |      |
|--|------|------|------|------|------|
| ELEV 1869  |      |      |      |      |      |
| TDZE 21L 1865<br>TDZE 21R 1869   |      |      |      |      |      |
| 209° 7.2NM from FAF  |      |      |      |      |      |
| 2011 BCN 1951<br>1949 10120 x 200<br>10351 x 150<br>0.8% DOWN<br>TWR 1978<br>HIRL all Rwys |      |      |      |      |      |
| FAF to MAP 6.7 NM  |      |      |      |      |      |
| Knots  | 120  | 140  | 160  | 180  | 200  |
| Min:Sec  | 3:21 | 2:52 | 2:31 | 2:14 | 2:01 |

LAS VEGAS, NEVADA

36°14'N - 115°02'W

NELLIS AFB (KLSV)

Amdt 8 03JAN19

# HI-ILS or LOC Z RWY 21L

SW-4, 05 DEC 2019 to 02 JAN 2020

SW-4, 05 DEC 2019 to 02 JAN 2020



INDIAN SPRINGS, NEVADA

|                      |                  |                         |              |
|----------------------|------------------|-------------------------|--------------|
| TACAN INS<br>Chan 87 | APCH CRS<br>065° | Rwy ldg<br>TDZE<br>3133 | 9002<br>3113 |
|                      |                  | Arpt Elev<br>3113       |              |

INDIAN SPRINGS AF AUX (KINS)

**▼** \* MISSED APPROACH: Straight ahead to INS TACAN, intercept INS R-outbound, cross 17 DME at or above 9500, then direkt KSV TACAN 114

NELLIS CON

CREECH AFB TOWER  
118.30 60.60

GND CON

**NOT FOR CIVIL USE**

FOR USE UNDER BASIC VFR  
WEATHER MINIMUMS ONLY

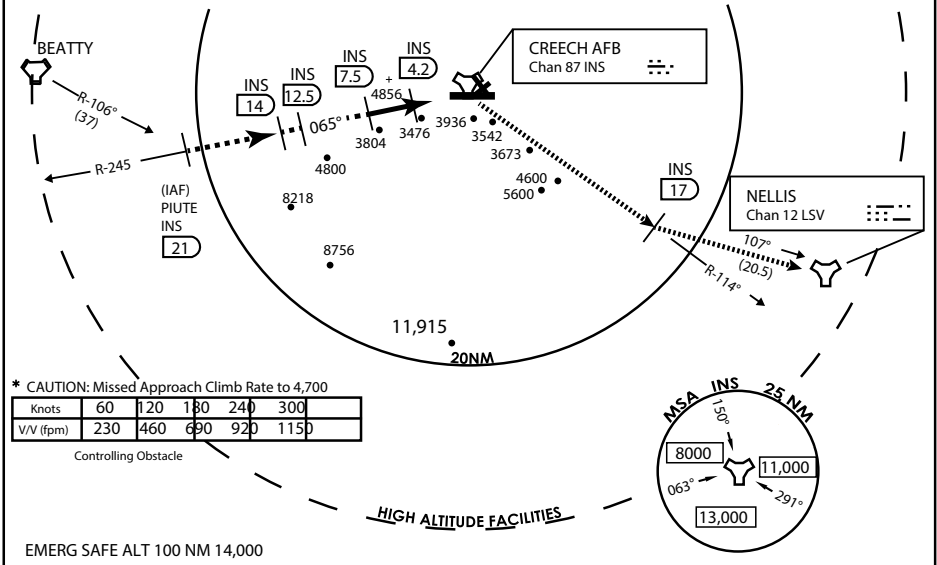
PILOT IS RESPONSIBLE FOR TERRAIN/OBSTACLE  
AVOIDANCE AND  
APPROPRIATE VFR CLOUD  
CLEARANCE FOR ALL

CAUTION: Descent gradients are greater than allowed under standard TERPS criteria and inbound course does not meet straight-in criteria

CAUTION: Final approach course crosses Runway centerline at MIDFIELD. Maneuvering left of course required prior to landing. Do not Maneuver farther north than the INS R- 258

Modified by viaBog 66 for use with DCS  
NOT FOR REAL LIFE NAVIGATION

Modified by viaBog 66 for use with DCS  
NOT FOR REAL LIFE NAVIGATION

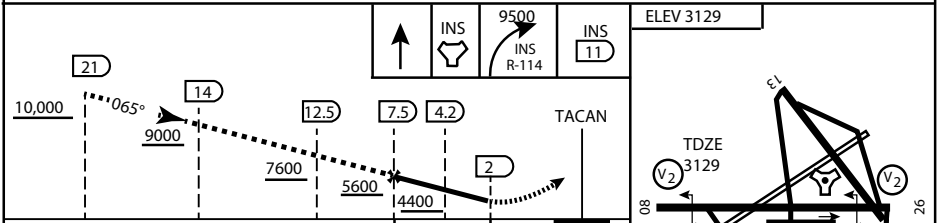


\* CAUTION: Missed Approach Climb Rate to 4,700

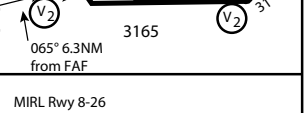
|           |     |     |     |     |      |
|-----------|-----|-----|-----|-----|------|
| Knots     | 60  | 120 | 180 | 240 | 300  |
| V/V (fpm) | 230 | 460 | 690 | 920 | 1150 |

Controlling Obstacle

HIGH ALTITUDE FACILITIES



|          |                |               |                         |                       |                         |
|----------|----------------|---------------|-------------------------|-----------------------|-------------------------|
| CATEGORY | A              | B             | C                       | D                     | E                       |
| S-8      | 3760-1 ½       | 627 (700-1 ½) | 3760-1¾<br>627 (700-1¾) | 3760-2<br>627 (700-2) | 3760-2¼<br>627 (700-2¼) |
| CIRCLING | NOT AUTHORIZED |               |                         |                       |                         |



CITY OF INDIAN, NEVADA

INDIAN SPRINGS AF AUX (KINS)

(FOR DAY VFR USE ONLY)



# AIRPORT DIAGRAM

476 VFG

CREECH AFB (KINS)  
INDIAN SPRINGS, NEVADA

ATIS  
 122.5  
 CREECH TOWER  
 118.4 360.7 38.65  
 GND CON  
 118.3 275.8  
 CLNC DEL

115°42'W

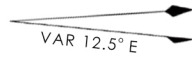
FIELD  
 ELEV  
 3127

80

972 X 150

HOT CARGO PAD

BAK-12

  
 VAR 12.5° E

WEST EOR

115°41'W

476 VFG JAN 2019

CONTROL TOWER  
 BASE OPS

RPA LOLA WEST

RPA LOLA EAST

LOLA / HUNG ORDNANCE

RUNWAY  
 31/13  
 MQ/RQ-1  
 ONLY

9002 X 150

258.5°

860 X 100

313.8°

4064 X 100

199 X 100

ELEV 3127

EAST EOR

BAK-12

ELEV 3127

115°40'W

1030 X 150

26

476 VFG JAN 2019

# AIRPORT DIAGRAM

INDIAN SPRINGS, NEVADA  
CREECH AFB (KINS)