

MISSION DATA CARD

OPORD		Callsign		Mission		Date/Time		
3259/2024		Viper 2		Training		291800SEP24		
Task	UNG. BOMB TRAINING					Freq		
AO	R64C					132.25		
Departure				Recovery				
FYTTR LOW				STRYK				
#	Callsign		Pilot		IFF	TCN	LSR	NET
-1	Viper 2-1		Butcher		2171	1Y	1711	26/01

LOADOUT

A/A	2xA120C				GUN	100% HEI-T	
A/G	12xM82				CHF	60	
POD	A131, TGP				FLR	60	
TKS					FUEL	100%	

TOLD

	Takeoff	Target	Joker	Bingo	Land
FUEL	7163				

AIRBASES

	Name	TCN	ATIS	GND	TWR	RWY	Elev	ILS
Dep	Nellis AFB	12X	270.1	275.8	327.0	21L	1850	109.1
Arr	Nellis AFB	12X	270.1	275.8	327.0	21L	1850	109.1
Div	Creech AFB	87X	290.45	275.8	360.6			

FLIGHTPLAN

#	Name	Navaid/Coords/DME	ALT	TOT
1	FYTTR	LSV 269/33 (N36 21.440 W115 41.470)		
2	Creech	N36 35.208 W115 40.961		
3	EASTBOMBCI RCLE	N36 40.618 W115 38.224		
4	WESTBOMBC IRCLE	N36 40.855 W115 40.438		
5	PUP	N36 39.500 W115 37		
6	STRYK	LSV 282/26 (N36 25.620 W115 30.700)		
7	GASS PEAK	LSV 309/12 (N36 24.140 W115 10.660)		
8	APEX	LSV 027/09 (N36 21.580 W114 54.340)		
9	Nellis	N36 14.680 W115 01.500		

COMMS

Radio	Usage
1	132.25
2	11-3-4-16-11-4-3
3	32.00

NOTES

West Bomb Circle 303511 S PA 18479 60296

East Bomb Circle 302211 S PA 21783 59904

Bombing Modes:

- * CCIP
- * DTOF / DRC
- * CCIP Consent
- * 3/9
- * 5 Mil

Patterns:

- * Box/Square Pattern

- * Square Curvilinear Pattern
 - | 6000ft (~1nm) - Start Turn (Curvilinear Delivery)
 - | 3000ft (~0.5nm) - Start Turn (Normal Delivery)
 - | In-Call bei Eindrehen (Kein Final-Attack-Heading)

- * Curvilinear Pattern
 - | 9000ft (~1.5nm) Diameter

- * Pop-Up Pattern
 - | Approach at 100ft - 500ft AGL / 300kIAS
 - | "IP direct to PUP" / "IP direct to Target" (45° Offset)
 - | Pull-Up-Point: Slant-Range + ~1nm
 - | Pull-Up: 3G Pull; Climb-Angle = Dive-Angle + 5°
 - | "Up"-Call

RADIO CHANNELS

#	Freq	Name
1		Flight/Squadron specific
2	289.4	Nellis Clearance Delivery
3	275.8	Nellis Ground
4	327.0	Nellis Tower
5	385.4	Nellis Approach/Departure West
6	273.55	Nellis Approach/Departure East
7	317.525	Nellis Control -- Sally
8	254.4	Nellis Control-- Lee
9	305.6	SOF Bullseye
10	343.725	EMERGENCY SINGLE FRQ
11	270.1	Nellis ATIS
12	360.625	Creech AFB Tower
13	250.1	HAVE QUICK 13
14	251.1	HAVE QUICK 14
15	252.1	HAVE QUICK 15
16	377.8	Blackjack
17	265.0	KC-135 AR-641A
18	360.8	KC-135MPRS AR-635
19	319.8	KC-135MPRS AR-625
20	300.05	KC-135 AR-231V

RAMROD

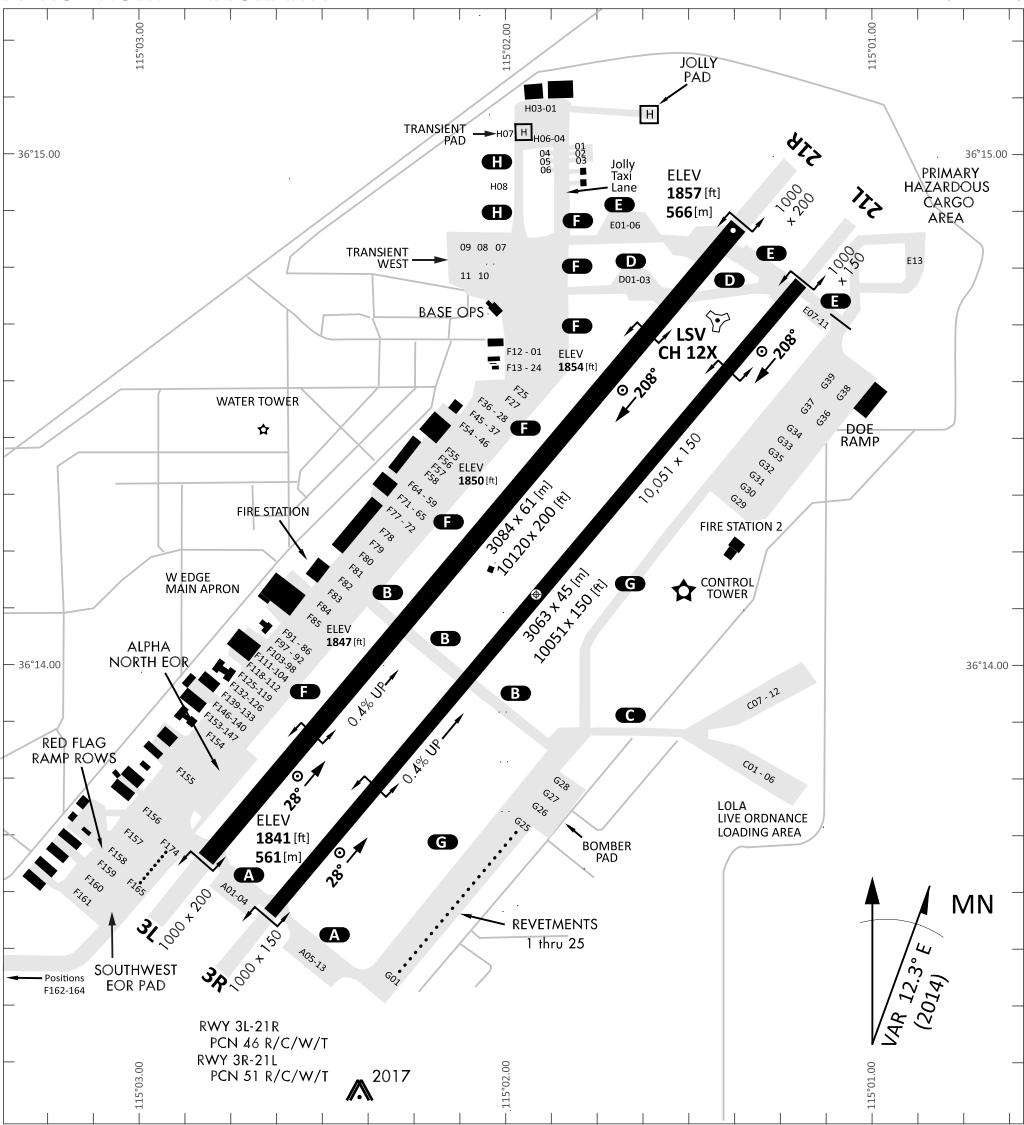
0	1	2	3	4	5	6	7	8	9
B	R	E	A	K	D	O	W	N	S

KTC 1400 C

	0	1	2	3	4	5	6	7	8	9
A	VKQP	BEX	UGS	JO	CF	DNL	AW	RM	TH	IY
B	ADLP	OFK	WMI	YU	BT	QCX	VR	NJ	SH	GE
C	NGSR	TBQ	PIY	DH	MJ	KLO	FV	WA	CU	EX
D	QKYM	UPV	JDB	RH	FE	OGS	LT	WN	AX	IC
E	XKVL	QAY	CWD	JM	PI	GSE	TH	BU	RN	FO
F	CSME	RUD	TKA	VI	BY	WXN	GO	HF	LJ	PQ
G	YVHW	JKM	LSC	GO	BQ	TFN	ED	IU	XP	RA
H	CTJU	DFE	OLQ	KI	BM	NXS	HY	WR	PG	VA
I	LJOW	NEM	CGY	SA	RX	KTU	QB	IV	PF	HD
J	FDBM	NUS	XWG	VQ	OP	IEC	AL	KH	TR	JY
K	NKMS	REA	FWH	PB	QC	IGL	UO	TY	VD	XJ
L	QVWM	TJA	YDG	SB	RF	IPX	ON	LH	CK	UE
M	QGTW	ERP	FXK	VL	MN	YHC	BJ	SI	OU	DA
N	KPYJ	VDG	CSO	IR	NM	FAH	TE	LQ	XW	BU
O	TSLM	YAH	XDB	PV	QN	IGC	KJ	EF	RO	UW
P	NCKV	XSI	BAQ	GL	JT	PFE	UR	HW	MD	YO
Q	DFWB	TSP	MJG	XA	NR	UKC	QV	IY	OL	EH
R	PLVC	OYA	KXS	WQ	UH	BJI	GM	RN	DT	EF
S	OSVE	TDI	KHW	JX	UL	CMN	GB	PF	RY	QA
T	JTHV	FEO	CYP	SA	KB	GUL	WD	RX	MQ	NI
U	QGJX	DSI	NBU	RK	MC	VWT	EP	HY	OL	FA
V	RYQL	XAN	VPH	WK	DC	UME	BT	JS	FG	IO
W	QLKY	OXJ	TCU	VS	IM	HWN	FG	BR	PA	DE
X	MSVF	QHC	KRE	IJ	AP	XUN	LG	DT	WY	BO
Y	QUML	ARP	WYS	BH	JK	GVD	EI	TX	NC	FO

NAVAIDS

Id	Name	Channel	Position	Elevation
BCE	Bryce Canyon	75	N3741.35 W11218.23	9040
BIH	Bishop	33	N3722.62 W11821.99	4114
BLD	Boulder	114	N3559.75 W11451.82	3650
BTY	Beatty	94	N3648.54 W11644.86	2925
CDC	Cedar City	120	N3747.24 W11304.90	5463
DAG	Daggett	79	N3457.75 W11634.69	1760
EED	Needles	99	N3445.96 W11428.43	650
GFS	Goffs	91	N3507.87 W11510.59	4019
GRL	Groom Lake	18	N3713.91 W11548.16	4475
HEC	Hector	74	N3447.83 W11627.78	1854
ILC	Wilson Creek	110	N3815.02 W11423.65	9318
INS	Creech AFB	87	N3635.20 W11540.12	3101
LAS	McCarran Intl	116	N3604.78 W11509.59	2142
LSV	Nellis	12	N3614.68 W11501.50	1864
MLF	Milford	58	N3821.62 W11300.79	4977
MMM	Mormon Mesa	90	N3646.16 W11416.65	2120
MVA	Mina	98	N3833.92 W11801.97	7860
OAL	Coale Dale	124	N3800.20 W11746.23	4800
PGS	Peach Springs	57	N3537.48 W11332.67	4754
TPH	Tonopah Muni	119	N3801.84 W11702.01	5330
TQQ	Silverbow	77	N3748.00 W11647.00	5500
UTI	St George	23	N3705.29 W11335.53	2871



PAR	RWY	CAT	MINIMA	ARP	ELEV	Scale
	21L	A B D E	2057 - 0.8 200 (200-0.8/1.6) GS 3°	36° 14.060° N 115° 01.058° W	1857 [ft] 566 [m]	0 300 600 900 1200 1500 [m]
	3R	A B D E	2057 - 0.8 200 (200-0.8/1.6) GS 3°			0 1000 2000 3000 4000 5000 [ft]
SRA	21R	A C D E	2257 - 1.2 350 (350-1.2/1.6)			
	3L	A C D E	2257 - 1.2 350 (350-1.2/1.6)			

RWY	TORA	TODA	ASDA	LDA	PSN	THR	ALS
21L	10051 [ft] 3063 [m]	11051 [ft] 3368 [m]	11051 [ft] 3368 [m]	10051 [ft] 3063 [m]	36°14.043' N	115°01.018' W	⊕
3R	10120 [ft] 3084 [m]	11120 [ft] 3398 [m]	11120 [ft] 3398 [m]	10120 [ft] 3084 [m]	36°13.029' N	115°02.038' W	

ATIS	NELLIS GROUND	NELLIS TOWER	NELLIS CONTROL	TACAN	ILS RWY 21L	NELLIS EAST	NELLIS WEST
270.100 MHz	275.800 121.800	327.000 132.55	317.525	LSV 12X	109.10 Mhz	384.400	385.000

FYTTR LOW VISUAL OPERATION CHART | VALID 2014

ATIS
270.100
NELLIS GROUND
275.800
NELLIS TOWER
327.000
NELLIS CONTROL
317.525
NELLIS DEP/APP EAST
384.400
BLACKJACK
377.800

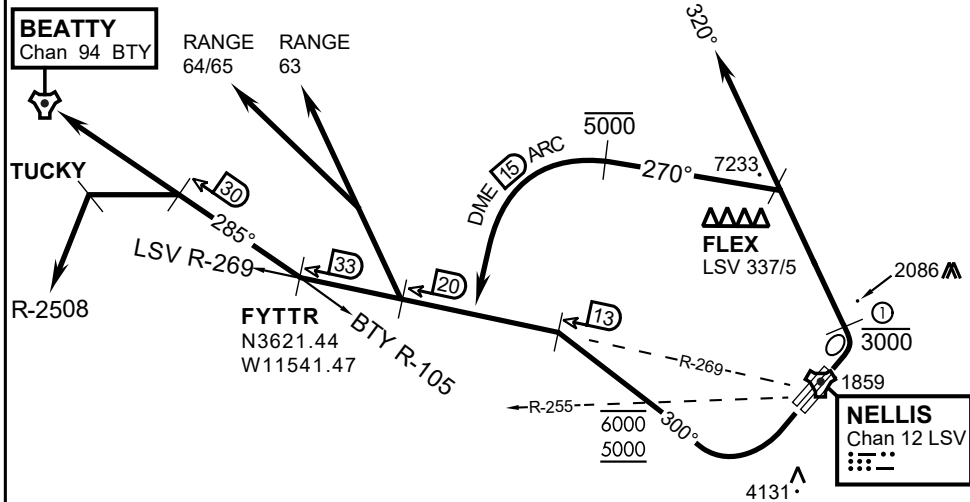
CAUTION: If unable to comply with restrictions advise ATC prior to departure.



VMC ONLY

PILOT RESPONSIBLE FOR TERRAIN AVOIDANCE

① 4 NM from RWY 3L/R



DEPARTURE ROUTE DESCRIPTION

TAKEOFF RWY 3L/R:

- Remain below 3,000' MSL until north of Race Track and turned westbound.
- Turn left within 4NM of Nellis direct FLEX. Fly north of FLEX and turn left heading 270°.
- Intercept LSV 15 DME ARC at or below 5,000' MSL.
- ARC south, intercept LSV R-269 outbound. Maintain VFR.

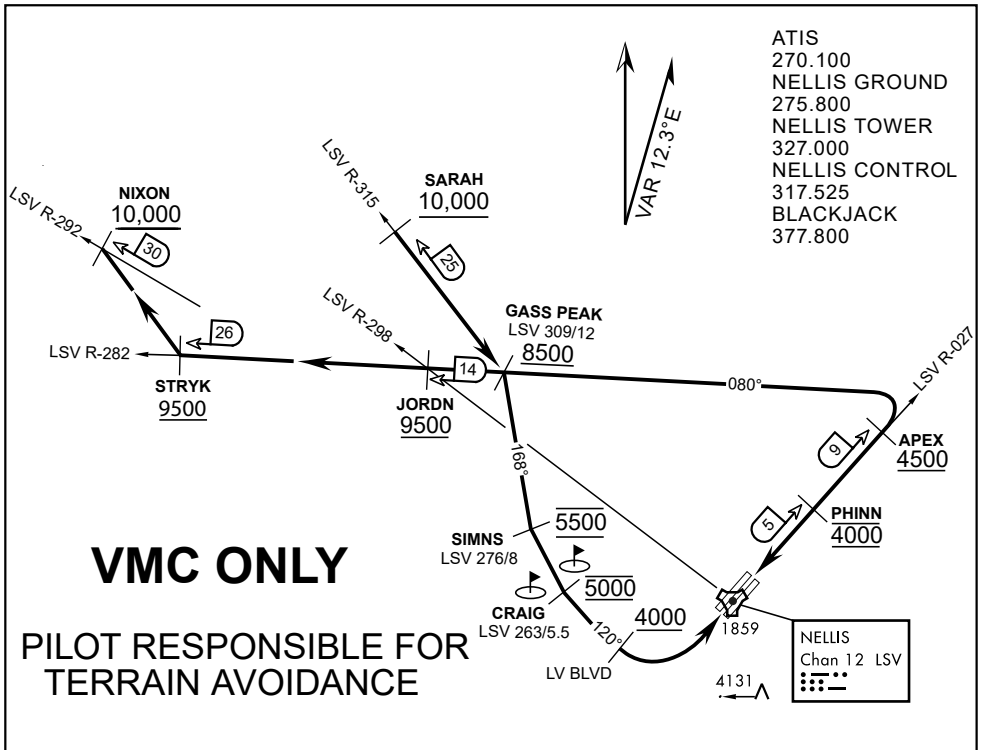
TAKEOFF RWY 21L/21R:

- Follow Noise Abatement Procedures.
- Fly runway heading until past Golf Course, turn right heading 300°.
- Cross LSV R-255 between 5,000' and 6,000' , intercept and proceed outbound on the LSV R-269.Recommend climb to 8,500' MSL or appropriate VFR altitude for overflight of North Las Vegas Training Area. Fly routing for appr. mission/transition.

TRANSITIONS:

- R-4806:** Turn right at the LSV 269/20 direct to assigned ranges.
- BEATTY:** Turn right at FYTTR direct BTY via the BTY R-105
- R-2508:** Turn right at the FYTTR, intercept the BTY 105/30, direct TUCKY, then direct R-2508

FYTTR DEPARTURE AND TRANSITIONS (FYTTR LOW)



- ATIS
- 270.100
- NELLIS GROUND
- 275.800
- NELLIS TOWER
- 327.000
- NELLIS CONTROL
- 317.525
- BLACKJACK
- 377.800

VMC ONLY

PILOT RESPONSIBLE FOR TERRAIN AVOIDANCE

APPROACH ROUTE DESCRIPTION

APPROACH RWY 3L/R

Cross STRYK at or above 9,500' MSL, proceed direct GASS PEAK. Cross JORDN at or above 9,500' MSL, cross GASS PEAK at or above 8,500' MSL. Proceed direct SIMNS and cross at 5,500' MSL. Cross Las Vegas Blvd at or above 4,000' MSL then to 3,500' MSL for Initial. Remain within 4 DME if LSV on turn to final.

VFR STRAIGHT-IN RWY 3L/R

Depart CRAIG & descend to be at 3,000' MSL by Las Vegas Blvd. Do not descend below 3,000' MSL until within 5 DME of LSV or 4 NM of the runway on turn to final.

APPROACH RWY 21L/R

Cross STRYK at or above 9,500' MSL, proceed direct GASS PEAK. Cross JORDN at or above 9,500' MSL, cross GASS PEAK at or above 8,500' MSL. Cross APEX at or above 4,500' MSL then direct 5NM initial. Descend to cross PHINN at 4,000' MSL, Inside 5 NM descend to 3,500' MSL.

VFR STRAIGHT-IN RWY 21L/R

Cross APEX at 4,000' MSL. Descend to be at 3,000' MSL at PHINN. Descend to 3,000' MSL at LSV 027/5.

RANGE 63B EXIT

- SOUTH:** Via NIXON at or above 10,000' MSL, then direct STRYK.
- EAST:** Via SARAH at or above 10,000' MSL, then direct GASS PEAK.



INDIAN SPRINGS, NEVADA

TACAN INS Chan 87	APCH CRS 065°	Rwy ldg TDZE 3133	9002 3113
		Arpt Elev 3113	

INDIAN SPRINGS AF AUX (KINS)

▼ * MISSED APPROACH: Straight ahead to INS TACAN, intercept INS R-outbound, cross 17 DME at or above 9500, then direkt KSV TACAN 114

NELLIS CON

CREECH AFB TOWER
118.30 60.60

GND CON

NOT FOR CIVIL USE

FOR USE UNDER BASIC VFR
WEATHER MINIMUMS ONLY

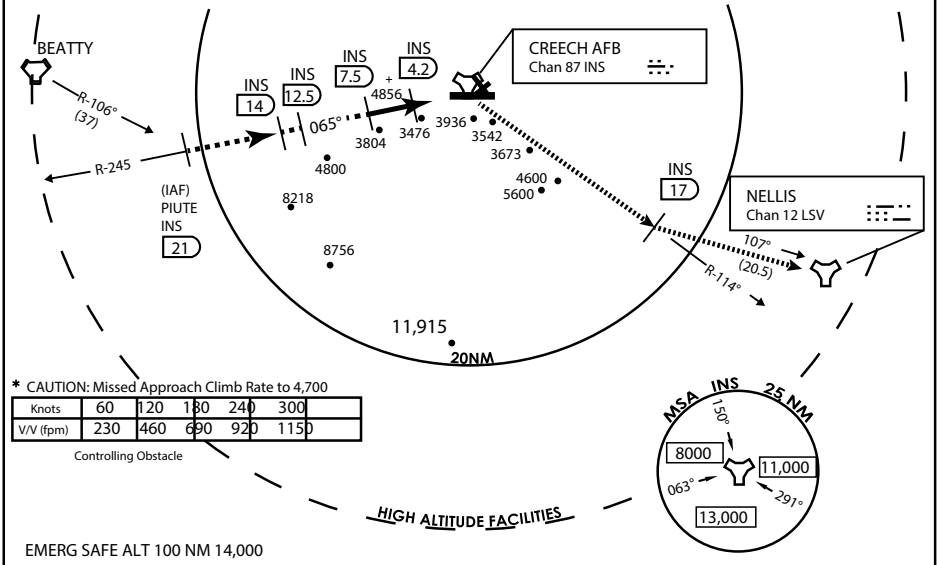
PILOT IS RESPONSIBLE FOR TERRAIN/OBSTACLE AVOIDANCE AND APPROPRIATE VFR CLOUD CLEARANCE FOR ALL

CAUTION: Descent gradients are greater than allowed under standard TERPS criteria and inbound course does not meet straight-in criteria

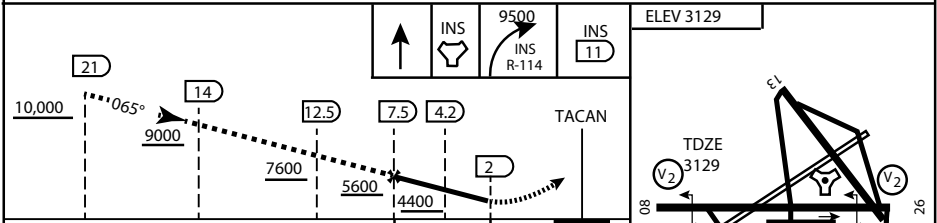
CAUTION: Final approach course crosses Runway centerline at MIDFIELD. Maneuvering left of course required prior to landing. Do not Maneuver farther north than the INS R- 258

Modified by viaBog 66 for use with DCS
NOT FOR REAL LIFE NAVIGATION

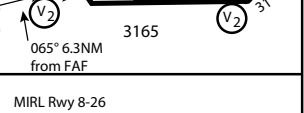
Modified by viaBog 66 for use with DCS
NOT FOR REAL LIFE NAVIGATION



EMERG SAFE ALT 100 NM 14,000



CATEGORY	A	B	C	D	E
S-8	3760-1 ½	627 (700-1 ½)	3760-1¾ 627 (700-1¾)	3760-2 627 (700-2)	3760-2¼ 627 (700-2¼)
CIRCLING	NOT AUTHORIZED				



CITY OF INDIAN, NEVADA

INDIAN SPRINGS AF AUX (KINS)

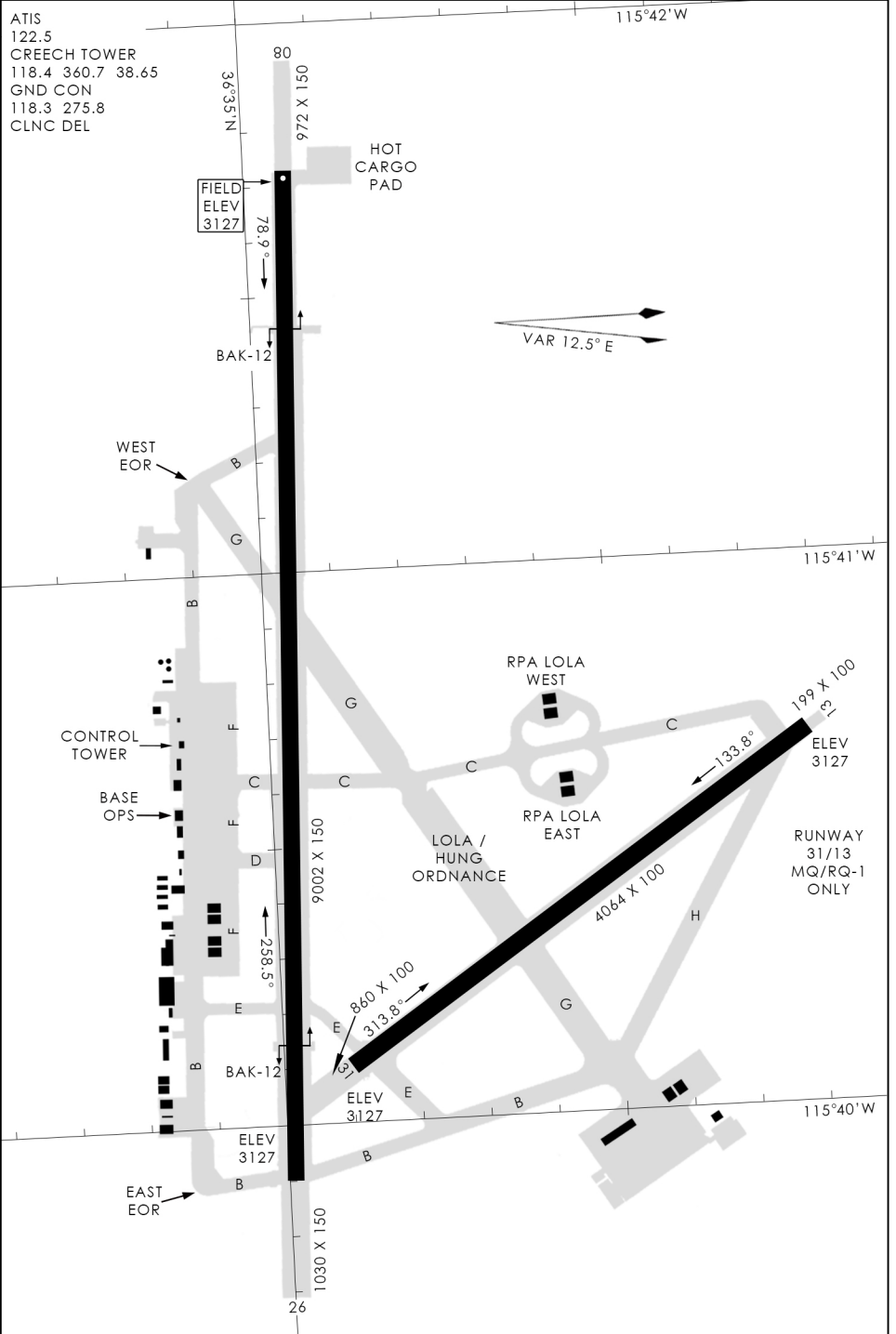
(FOR DAY VFR USE ONLY)



AIRPORT DIAGRAM

476 VFG

CREECH AFB (KINS)
INDIAN SPRINGS, NEVADA



476 VFG JAN 2019

476 VFG JAN 2019

AIRPORT DIAGRAM

INDIAN SPRINGS, NEVADA
CREECH AFB (KINS)