

MISSION DATA CARD

OPORD		Callsign		Mission		Date/Time		
3258/2024		Edelweiss		Training		271745SEP24		
Task	Departure & Recovery, BFT Maneuvers					Freq		
AO						264.05		
Departure				Recovery				
FYTTR THREE				STRYK				
#	Callsign		Pilot		IFF	TCN	LSR	NET
-1	Edelweiss-1		Cloud		1701	12X	1701	01/01

LOADOUT

A/A	2xA9X				GUN	100% HEI-T	
A/G					CHF	120	
POD					FLR	0	
TKS	FPU-8A				FUEL	100%	

TOLD

	Takeoff	Target	Joker	Bingo	Land		
FUEL	13047		4000	2500			

AIRBASES

	Name	TCN	ATIS	GND	TWR	RWY	Elev	ILS
Dep	Nellis AFB	12X	270.1	275.8	327.0	21L	1850	109.1
Arr	Nellis AFB	12X	270.1	275.8	327.0	21L	1850	109.1
Div	Creech AFB	87X	290.45	275.8	360.6			

FLIGHTPLAN

#	Name	Navaid/Coords/DME	ALT	TOT
1	FLEX	LSV 337/5 (N36 18.620 W115 02.360)		
2	FYTTR	LSV 269/33 (N36 21.440 W115 41.470)		
3	Beatty	N36 48.540 W116 44.860		
4	Creech	N36 35.208 W115 40.961		
5	STRYK	LSV 282/26 (N36 25.620 W115 30.700)		
6	GASS PEAK	LSV 309/12 (N36 24.140 W115 10.660)		
7	SIMNS	LSV 276/8 (N36 17.340 W115 10.750)		
8	CRAIG	LSV 263/5.5 (N36 15.250 W115 08.270)		

COMMS

Radio	Usage
1	327.000

RADIO CHANNELS

#	Freq	Name
1		Flight/Squadron specific
2	289.4	Nellis Clearance Delivery
3	275.8	Nellis Ground
4	327.0	Nellis Tower
5	385.4	Nellis Approach/Departure West
6	273.55	Nellis Approach/Departure East
7	317.525	Nellis Control -- Sally
8	254.4	Nellis Control-- Lee
9	305.6	SOF Bullseye
10	343.725	EMERGENCY SINGLE FRQ
11	270.1	Nellis ATIS
12	360.625	Creech AFB Tower
13	250.1	HAVE QUICK 13
14	251.1	HAVE QUICK 14
15	252.1	HAVE QUICK 15
16	377.8	Blackjack
17	265.0	KC-135 AR-641A
18	360.8	KC-135MPRS AR-635
19	319.8	KC-135MPRS AR-625
20	300.05	KC-135 AR-231V

RAMROD

0	1	2	3	4	5	6	7	8	9
H	Y	P	O	C	R	I	T	E	S

KTC 1400 C

	0	1	2	3	4	5	6	7	8	9
A	TPND	SGR	BEF	OI	QW	JLU	AC	XH	KV	YM
B	SHKW	VBO	CJG	ER	FN	LAQ	DP	IT	UY	XM
C	XDVR	UKS	QNB	LG	OM	FHE	PJ	AY	WI	TC
D	OXBE	HWP	LGT	YQ	UI	FCJ	MN	AS	DV	KR
E	HFVE	KMO	YIP	CA	GW	QXD	LU	BS	TJ	NR
F	UGEM	OCF	RLJ	NP	YD	KSI	QH	XW	TB	AV
G	XYOJ	INS	THA	WG	RL	QDP	EK	VC	FM	BU
H	QEGW	MJF	BXR	CO	KN	VHD	SY	PU	LI	AT
I	RHTW	DCN	SQU	GO	YI	JPL	MF	BK	AV	XE
J	IORA	TWM	LCN	XK	GQ	VBS	PJ	UH	YF	ED
K	LOAG	JFT	QHN	IB	KY	WEM	SU	RD	PX	CV
L	FYRC	IUL	OWJ	VA	ED	MHT	KQ	XB	NG	PS
M	VHQP	SLR	CAT	BW	YK	FUE	MX	NI	DO	JG
N	JLMC	NRO	PGQ	BV	XK	DIF	WU	HT	EA	SY
O	KLEB	CMW	JVR	PO	NX	IUD	HG	QF	YA	ST
P	WBHT	KGV	ORS	NE	IY	AMF	DL	QJ	CX	PU
Q	HTJB	XEM	VOQ	YK	UR	NWC	GF	PS	DI	AL
R	CUKS	NWA	XTG	HR	MJ	BLD	FQ	OV	IE	YP
S	YRJQ	MXI	LDB	AP	TK	SGE	HN	UO	VF	CW
T	SWCY	QKE	PAH	NL	XV	IGO	RD	MB	TJ	UF
U	FGVI	DXE	QJR	NK	YL	APS	TH	CW	OB	UM
V	FEGA	CST	PDY	NO	VQ	IKJ	UX	HM	WR	BL
W	FTMG	UEJ	XYK	RC	DO	VSQ	IW	BH	AN	LP
X	TFWH	BXK	AYU	PD	ER	MNS	CV	JI	OQ	GL
Y	EWBC	KNS	FVO	PD	HI	RXL	UT	QA	JG	YM

NAVAIDS

Id	Name	Channel	Position	Elevation
BCE	Bryce Canyon	75	N3741.35 W11218.23	9040
BIH	Bishop	33	N3722.62 W11821.99	4114
BLD	Boulder	114	N3559.75 W11451.82	3650
BTY	Beatty	94	N3648.54 W11644.86	2925
CDC	Cedar City	120	N3747.24 W11304.90	5463
DAG	Daggett	79	N3457.75 W11634.69	1760
EED	Needles	99	N3445.96 W11428.43	650
GFS	Goffs	91	N3507.87 W11510.59	4019
GRL	Groom Lake	18	N3713.91 W11548.16	4475
HEC	Hector	74	N3447.83 W11627.78	1854
ILC	Wilson Creek	110	N3815.02 W11423.65	9318
INS	Creech AFB	87	N3635.20 W11540.12	3101
LAS	McCarran Intl	116	N3604.78 W11509.59	2142
LSV	Nellis	12	N3614.68 W11501.50	1864
MLF	Milford	58	N3821.62 W11300.79	4977
MMM	Mormon Mesa	90	N3646.16 W11416.65	2120
MVA	Mina	98	N3833.92 W11801.97	7860
OAL	Coale Dale	124	N3800.20 W11746.23	4800
PGS	Peach Springs	57	N3537.48 W11332.67	4754
TPH	Tonopah Muni	119	N3801.84 W11702.01	5330
TQQ	Silverbow	77	N3748.00 W11647.00	5500
UTI	St George	23	N3705.29 W11335.53	2871



RWY 3L-21R
 PCN 46 R/C/W/T
 RWY 3R-21L
 PCN 51 R/C/W/T
 2017

PAR	RWY	CAT	MINIMA		ARP	ELEV	Scale 1:35'500	
	21L	A B D E	2057 - 0.8 200 (200-0.8/1.6)	GS 3°	36° 14.060° N 115° 01.058° W	1857 [ft] 566 [m]	0 300 600 900 1200 1500 [m]	
	3R	A B D E	2057 - 0.8 200 (200-0.8/1.6)	GS 3°			0 1000 2000 3000 4000 5000 [ft]	
SRA	21R	A C D E	2257 - 1.2 350 (350-1.2/1.6)					
	3L	A C D E	2257 - 1.2 350 (350-1.2/1.6)					

RWY	TORA	TODA	ASDA	LDA	PSN	THR	ALS
21L	10051 [ft] 3063 [m]	11051 [ft] 3368 [m]	11051 [ft] 3368 [m]	10051 [ft] 3063 [m]	36°14.043' N	115°01.018' W	⊕
3R	10120 [ft] 3084 [m]	11120 [ft] 3398 [m]	11120 [ft] 3398 [m]	10120 [ft] 3084 [m]	36°13.029' N	115°02.038' W	

ATIS	NELLIS GROUND	NELLIS TOWER	NELLIS CONTROL	TACAN	ILS RWY 21L	NELLIS EAST	NELLIS WEST
270.100 MHz	275.800 121.800	327.000 132.55	317.525	LSV 12X	109.10 Mhz	384.400	385.000

FYTTR THREE DEPARTURE IFR CHART | VALID 2014 LAS VEGAS, NEVADA

ATIS
270.100
NELLIS GROUND
275.800
NELLIS TOWER
327.000
NELLIS CONTROL
317.525
NELLIS DEP/APP EAST
384.400
BLACKJACK
377.800



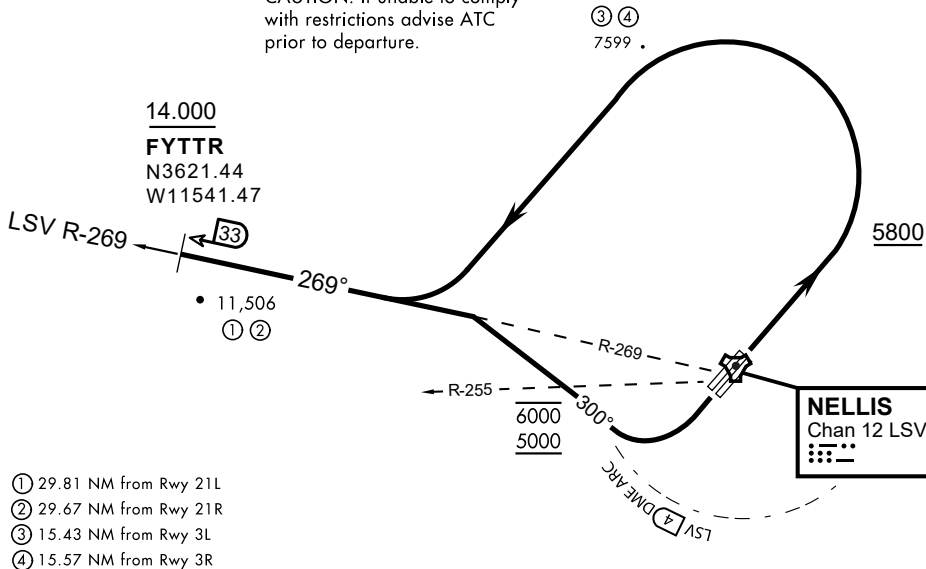
Rwy	Knots	60	120	180	240	300	360
3L (a)	V/V(fpm)	394	788	1182	1576	1970	2364
3R (a)	V/V(fpm)	392	784	1176	1568	1960	2352
21L (b)	V/V(fpm)	388	776	1164	1552	1940	2328
21R (b)	V/V(fpm)	390	780	1170	1560	1950	2340

Minimum Climb Rate

(a) to 9300

(b) to 13 500

CAUTION: If unable to comply with restrictions advise ATC prior to departure.



- ① 29.81 NM from Rwy 21L
- ② 29.67 NM from Rwy 21R
- ③ 15.43 NM from Rwy 3L
- ④ 15.57 NM from Rwy 3R

DEPARTURE ROUTE DESCRIPTION

TAKEOFF RWY 3L/R

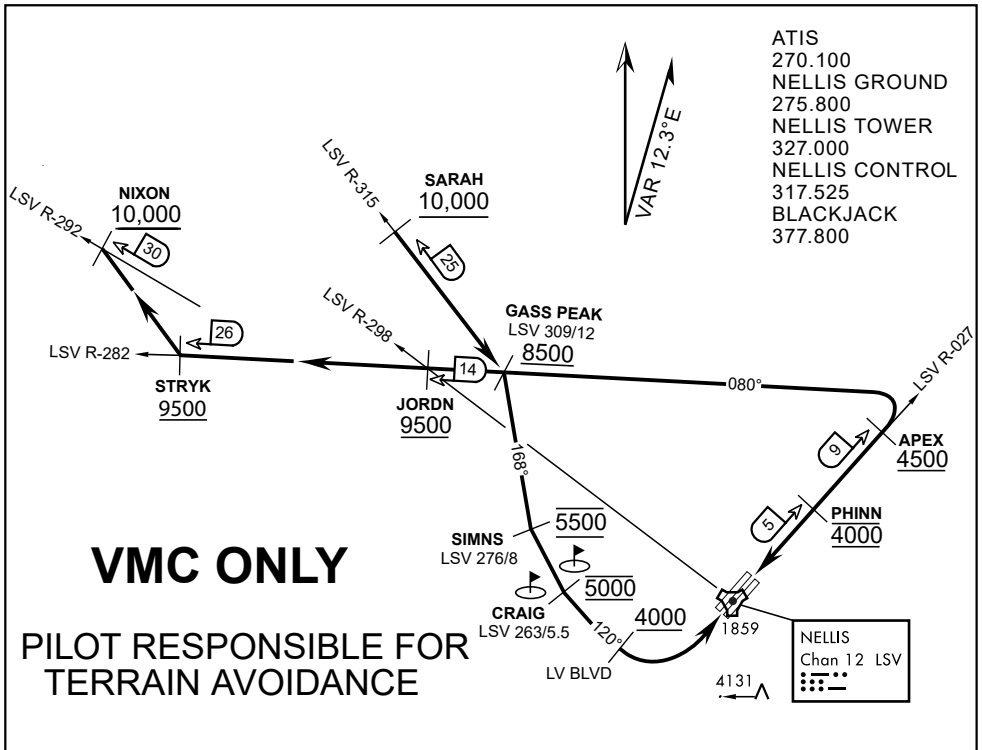
- Fly runway heading until reaching 5,800'.
- Then climbing left turn to intercept LSV TACAN R-269 outbound.
- Cross FYTTR at or above 14,000' or as assigned, then via assigned route.

TAKEOFF RWY 21L/21R

- Turn right to intercept LSV TACAN R-269 outbound.
- Remain within LSV 4 DME until joining LSV R-269
- Cross R-255 between 5,000' and 6,000'.
- Cross FYTTR at or above 14,000' or as assigned, then via assigned route.

NOISE ABATEMENT PROCEDURES:

Fly according Nellis Noise Abatement instructions as published



- ATIS
- 270.100
- NELLIS GROUND
- 275.800
- NELLIS TOWER
- 327.000
- NELLIS CONTROL
- 317.525
- BLACKJACK
- 377.800

VMC ONLY

PILOT RESPONSIBLE FOR TERRAIN AVOIDANCE

APPROACH ROUTE DESCRIPTION

APPROACH RWY 3L/R

Cross STRYK at or above 9,500' MSL, proceed direct GASS PEAK. Cross JORDN at or above 9,500' MSL, cross GASS PEAK at or above 8,500' MSL. Proceed direct SIMNS and cross at 5,500' MSL. Cross Las Vegas Blvd at or above 4,000' MSL then to 3,500' MSL for Initial. Remain within 4 DME if LSV on turn to final.

VFR STRAIGHT-IN RWY 3L/R

Depart CRAIG & descend to be at 3,000' MSL by Las Vegas Blvd. Do not descend below 3,000' MSL until within 5 DME of LSV or 4 NM of the runway on turn to final.

APPROACH RWY 21L/R

Cross STRYK at or above 9,500' MSL, proceed direct GASS PEAK. Cross JORDN at or above 9,500' MSL, cross GASS PEAK at or above 8,500' MSL. Cross APEX at or above 4,500' MSL then direct 5NM initial. Descend to cross PHINN at 4,000' MSL, Inside 5 NM descend to 3,500' MSL.

VFR STRAIGHT-IN RWY 21L/R

Cross APEX at 4,000' MSL. Descend to be at 3,000' MSL at PHINN. Descend to 3,000' MSL at LSV 027/5.

RANGE 63B EXIT

SOUTH: Via NIXON at or above 10,000' MSL, then direct STRYK.

EAST: Via SARAH at or above 10,000' MSL, then direct GASS PEAK.



INDIAN SPRINGS, NEVADA

TACAN INS Chan 87	APCH CRS 065°	Rwy ldg TDZE 3133	9002 3113
		Arpt Elev 3113	

INDIAN SPRINGS AF AUX (KINS)

▼ * MISSED APPROACH: Straight ahead to INS TACAN, intercept INS R-outbound, cross 17 DME at or above 9500, then direkt KSV TACAN 114

NELLIS CON

CREECH AFB TOWER
118.30 60.60

GND CON

NOT FOR CIVIL USE

FOR USE UNDER BASIC VFR
WEATHER MINIMUMS ONLY

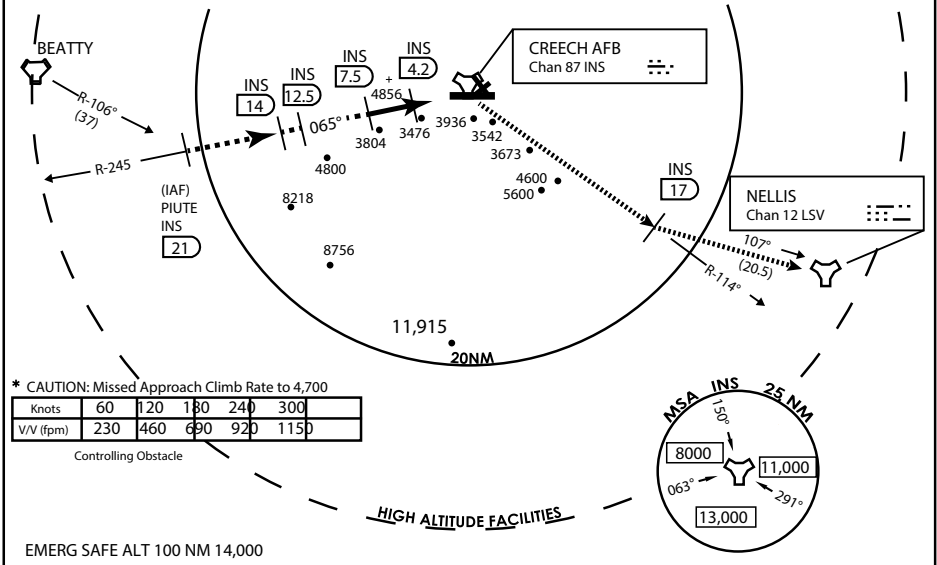
PILOT IS RESPONSIBLE FOR TERRAIN/OBSTACLE AVOIDANCE AND APPROPRIATE VFR CLOUD CLEARANCE FOR ALL

CAUTION: Descent gradients are greater than allowed under standard TERPS criteria and inbound course does not meet straight-in criteria

CAUTION: Final approach course crosses Runway centerline at MIDFIELD. Maneuvering left of course required prior to landing. Do not Maneuver farther north than the INS R- 258

Modified by vJaBoG 66 for use with DCS
NOT FOR REAL LIFE NAVIGATION

Modified by vJaBoG 66 for use with DCS
NOT FOR REAL LIFE NAVIGATION



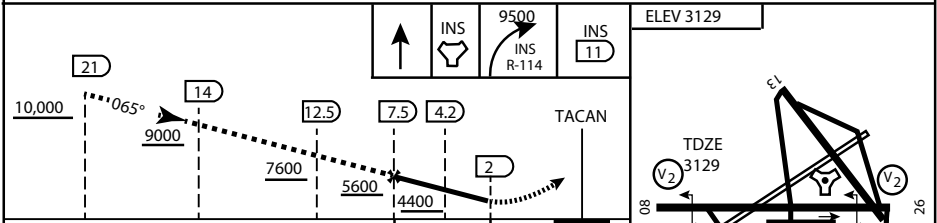
* CAUTION: Missed Approach Climb Rate to 4,700

Knots	60	120	180	240	300
V/V (fpm)	230	460	690	920	1150

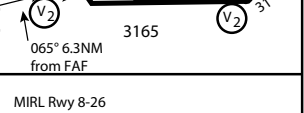
Controlling Obstacle

HIGH ALTITUDE FACILITIES

EMERG SAFE ALT 100 NM 14,000



CATEGORY	A	B	C	D	E
S-8	3760-1 1/2	627 (700-1 1/2)	3760-1 3/4 627 (700-1 3/4)	3760-2 627 (700-2)	3760-2 1/4 627 (700-2 1/4)
CIRCLING	NOT AUTHORIZED				



CITY OF INDIAN, NEVADA

INDIAN SPRINGS AF AUX (KINS)

(FOR DAY VFR USE ONLY)



AIRPORT DIAGRAM

476 VFG

CREECH AFB (KINS)
INDIAN SPRINGS, NEVADA

ATIS
122.5
CREECH TOWER
118.4 360.7 38.65
GND CON
118.3 275.8
CLNC DEL

115°42'W

FIELD
ELEV
3127

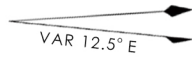
80

972 X 150

HOT
CARGO
PAD

78.9°

BAK-12



WEST
EOR

115°41'W

476 VFG JAN 2019

CONTROL
TOWER
BASE
OPS

RPA LOLA
WEST

RPA LOLA
EAST

LOLA /
HUNG
ORDNANCE

199 X 100
ELEV
3127
RUNWAY
31/13
MQ/RQ-1
ONLY

9002 X 150

258.5°

860 X 100

313.8°

4064 X 100

115°40'W

BAK-12

ELEV
3127

EAST
EOR

1030 X 150

26

476 VFG JAN 2019

AIRPORT DIAGRAM

INDIAN SPRINGS, NEVADA
CREECH AFB (KINS)