

MISSION DATA CARD

| | | | | | | | | |
|------------|-----------|----------|-------|----------|------|-------------|--------|-------|
| OPORD | | Callsign | | Mission | | Date/Time | | |
| 3255/2024 | | Tiger 1 | | Training | | 262010SEP24 | | |
| Task | BVR | | | | | | Freq | |
| AO | BVR Range | | | | | | 261.15 | |
| Departure | | | | Recovery | | | | |
| DREAM FOUR | | | | STRYK | | | | |
| # | Callsign | | Pilot | | IFF | TCN | LSR | NET |
| -1 | Tiger 1-1 | | Hawk | | 1011 | 1Y | 1551 | 01/01 |
| -2 | Tiger 1-2 | | Ghost | | 1012 | 64Y | 1552 | 01/02 |

LOADOUT

| | | | | | | | |
|-----|----------|--|--|--|------|------------|--|
| A/A | 2xA9X | | | | GUN | 100% HEI-T | |
| A/G | | | | | CHF | 120 | |
| POD | | | | | FLR | 0 | |
| TKS | 2xFPU-8A | | | | FUEL | 50% | |

TOLD

| | | | | | |
|------|---------|--------|-------|-------|------|
| | Takeoff | Target | Joker | Bingo | Land |
| FUEL | 9889 | | | | |

AIRBASES

| | | | | | | | | |
|-----|------------|-----|--------|-------|-------|-----|------|-------|
| | Name | TCN | ATIS | GND | TWR | RWY | Elev | ILS |
| Dep | Nellis AFB | 12X | 270.1 | 275.8 | 327.0 | 21L | 1850 | 109.1 |
| Arr | Nellis AFB | 12X | 270.1 | 275.8 | 327.0 | 21L | 1850 | 109.1 |
| Div | Creech AFB | 87X | 290.45 | 275.8 | 360.6 | | | |

FLIGHTPLAN

| # | Name | Navaid/Coords/DME | ALT | TOT |
|---|-------|--|-------|-----|
| 1 | DREAM | LAS 354/66 BLD 342/71 (N37 10.340 W114 59.530) | 22000 | |
| 2 | ILC | N38 15.012 W114 23.653 | 22000 | |
| 3 | TPH | N38 01.838 W117 02.010 | 22000 | |
| 4 | BTY | N36 48.035 W116 44.858 | 22000 | |
| 5 | STRYK | LSV 282/26 (N36 25.620 W115 30.700) | 22000 | |

COMMS

| Radio | Usage |
|-------|--|
| 1 | 11(Atis), 3(NG), 4(NT), 16(BJ), 4(NT), 3(NG) |
| 2 | Inhouse 261.25 |
| 3 | MIDS A: 22 / B: 44 |

SUPPORT**Tanker**

| Callsign | TCN | Freq | ALT | TAS |
|----------|------|------------------------------------|-------|-----|
| ARCO 1 | 113Y | 319.8 | FL250 | 450 |
| | Pos | AR-625: MVA 168/77 (N3717 W11802) | | |
| SHELL 2 | 115Y | 360.8 | FL250 | 430 |
| | Pos | AR-635: MLF 260/127 (N3831 W11542) | | |

AWACS

| Callsign | Freq | ALT | Pos |
|----------|-------|-------|-----------------------------|
| MAGIC | 377.8 | FL270 | N3749 W11417 - N3713 W11446 |

OTHER FLIGHTS

| Callsign | Mission | Airframe | Freq | TCN | Grpld | Laser |
|-------------|-----------|------------|--------------------|------|-------|-------|
| Edelweiss 4 | Training | 1x F/A-18C | 264.15 | 1/64 | | 157X |
| AO | BEATTY | Task | BJT Training | | | |
| Edelweiss 5 | Training | 4x AH-64D | 264.15 | 1/64 | | 171X |
| AO | NTTR | Task | BFT | | | |
| Edelweiss 1 | Training | 4x F-16C | 264.15 | 1/64 | | 171X |
| AO | Rachel | Task | BFM | | | |
| Monster 1 | Training | 4x A-10C | 132.15 | 1/64 | 21 | 161X |
| AO | R64C | Task | UNG. BOMB TRAINING | | | |
| Edelweiss 7 | Training | 2x F/A-18C | 264.35 | 1/64 | | 173X |
| AO | RANGE 64C | Task | TRAINING Refueling | | | |
| Edelweiss 7 | Training | 1x F/A-18C | 264.35 | 1/64 | | 173X |
| AO | RANGE 64C | Task | TRAINING Refueling | | | |
| Panther 2 | Training | 2x F/A-18C | 261.25 | 1/64 | 2 | 155X |
| AO | BVR Range | Task | BVR | | | |
| Beast 7 | Training | 2x A-10C | 132.25 | 1/64 | 26 | 171X |
| AO | R64C | Task | UNG. BOMB TRAINING | | | |

RADIO CHANNELS

| # | Freq | Name |
|----|---------|--------------------------------|
| 1 | | Flight/Squadron specific |
| 2 | 289.4 | Nellis Clearance Delivery |
| 3 | 275.8 | Nellis Ground |
| 4 | 327.0 | Nellis Tower |
| 5 | 385.4 | Nellis Approach/Departure West |
| 6 | 273.55 | Nellis Approach/Departure East |
| 7 | 317.525 | Nellis Control -- Sally |
| 8 | 254.4 | Nellis Control-- Lee |
| 9 | 305.6 | SOF Bullseye |
| 10 | 343.725 | EMERGENCY SINGLE FRQ |
| 11 | 270.1 | Nellis ATIS |
| 12 | 360.625 | Creech AFB Tower |
| 13 | 250.1 | HAVE QUICK 13 |
| 14 | 251.1 | HAVE QUICK 14 |
| 15 | 252.1 | HAVE QUICK 15 |
| 16 | 377.8 | Blackjack |
| 17 | 265.0 | KC-135 AR-641A |
| 18 | 360.8 | KC-135MPRS AR-635 |
| 19 | 319.8 | KC-135MPRS AR-625 |
| 20 | 300.05 | KC-135 AR-231V |

RAMROD

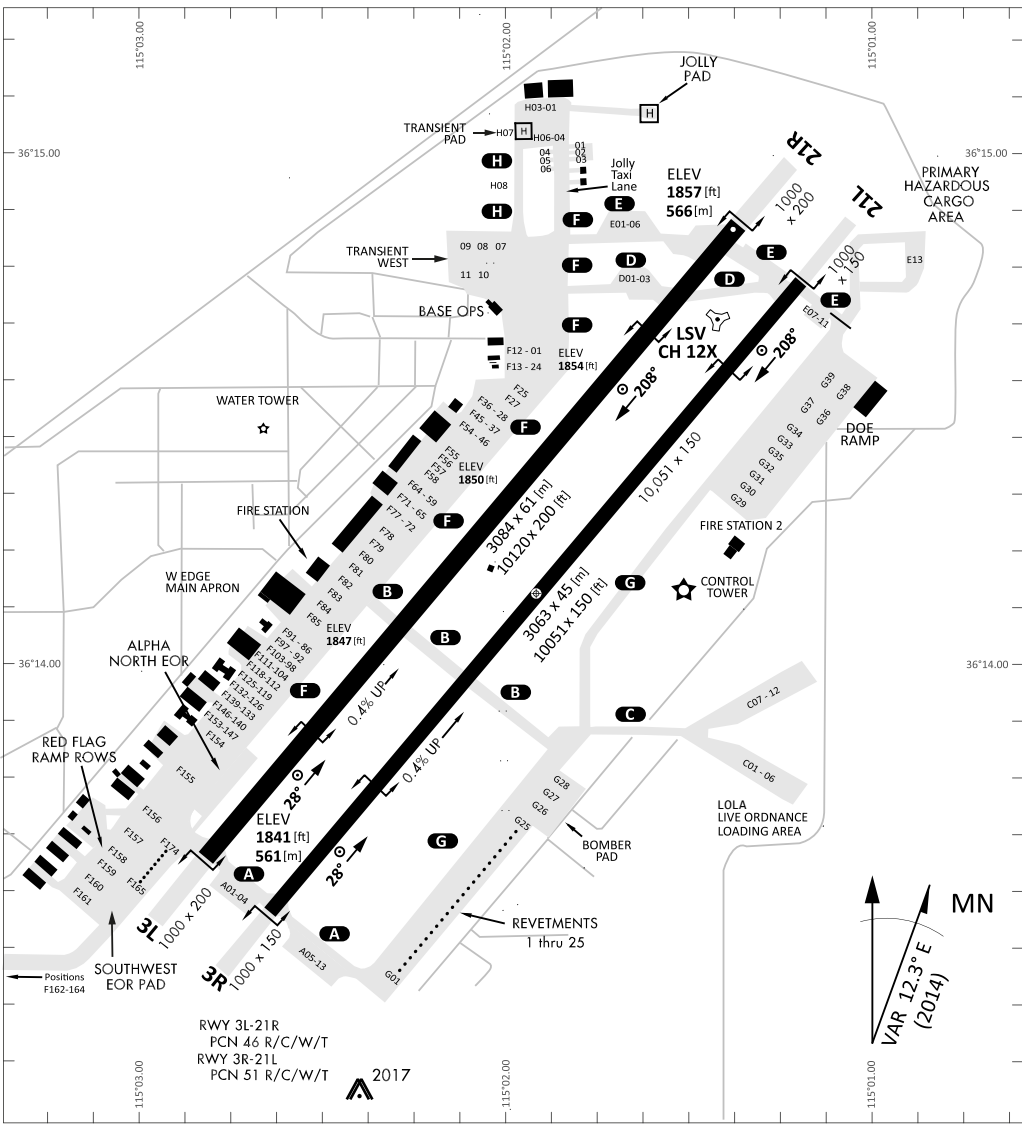
| | | | | | | | | | |
|---|---|---|---|---|---|---|---|---|---|
| 0 | 1 | 2 | 3 | 4 | 5 | 6 | 7 | 8 | 9 |
| M | I | S | C | O | U | N | T | E | D |

KTC 1400 C

| | 0 | 1 | 2 | 3 | 4 | 5 | 6 | 7 | 8 | 9 |
|---|------|-----|-----|----|----|-----|----|----|----|----|
| A | NRBP | UHK | IAW | XO | CF | MEV | JS | QY | TG | DL |
| B | XBRD | ALI | HCE | KN | MS | YFV | JG | QW | UO | PT |
| C | IBYA | SOV | RJE | CQ | GD | FNX | HT | MU | WK | PL |
| D | HEAI | XVQ | KMJ | GF | DW | YRP | OC | TB | NL | US |
| E | NYLO | GUW | PRX | IE | AB | CSK | JQ | MH | VF | TD |
| F | TMYR | NSX | FVA | LI | JE | QCD | UK | PB | OW | GH |
| G | DMUO | XNR | GIA | HQ | CP | YSB | WL | ET | JK | FV |
| H | YFNA | CEW | PLV | XT | HG | QSB | KU | IJ | MR | OD |
| I | FKJS | PCO | GTI | LA | NE | QBD | YU | RX | WV | MH |
| J | VHKN | OBU | QEI | LA | CM | WRY | DX | TF | JP | GS |
| K | GVPE | SXC | KND | QA | MB | YLW | JT | HF | UO | RI |
| L | IXNK | PWB | DQG | JU | VS | AYT | FL | OM | HR | CE |
| M | BKMW | NOU | ICD | GV | FS | QHL | AJ | TX | YP | RE |
| N | OGSW | NKU | YER | MT | JC | HBI | DV | LQ | FX | PA |
| O | VLWE | NTQ | SUJ | XK | BG | AOR | DC | HF | IP | MY |
| P | LABI | VOF | XQT | UD | RW | MGP | YK | SJ | NE | CH |
| Q | OHLN | RAV | BJX | IM | FW | CKG | EY | TP | QU | DS |
| R | EMHW | KIR | NTY | XF | DL | CPB | GU | QA | SV | JO |
| S | JEBT | YOQ | SAI | FN | CX | VRL | DM | KH | GW | UP |
| T | NJFP | UDV | OWM | QR | CK | ETH | GI | YB | XA | SL |
| U | EOPQ | RCM | HXJ | DY | FN | WLV | TK | IA | BS | UG |
| V | LBJT | OMI | GRE | WN | UC | VHK | QD | YF | XA | PS |
| W | AXDL | URK | SOV | FB | GH | PWI | YM | TJ | EC | NQ |
| X | JKXU | DLE | HTS | YA | WF | NVM | QI | PR | GO | BC |
| Y | FKIJ | TQR | XWO | GE | VY | PMB | DN | CU | AH | SL |

NAVAIDS

| Id | Name | Channel | Position | Elevation |
|-----|---------------|---------|--------------------|-----------|
| BCE | Bryce Canyon | 75 | N3741.35 W11218.23 | 9040 |
| BIH | Bishop | 33 | N3722.62 W11821.99 | 4114 |
| BLD | Boulder | 114 | N3559.75 W11451.82 | 3650 |
| BTY | Beatty | 94 | N3648.54 W11644.86 | 2925 |
| CDC | Cedar City | 120 | N3747.24 W11304.90 | 5463 |
| DAG | Daggett | 79 | N3457.75 W11634.69 | 1760 |
| EED | Needles | 99 | N3445.96 W11428.43 | 650 |
| GFS | Goffs | 91 | N3507.87 W11510.59 | 4019 |
| GRL | Groom Lake | 18 | N3713.91 W11548.16 | 4475 |
| HEC | Hector | 74 | N3447.83 W11627.78 | 1854 |
| ILC | Wilson Creek | 110 | N3815.02 W11423.65 | 9318 |
| INS | Creech AFB | 87 | N3635.20 W11540.12 | 3101 |
| LAS | McCarran Intl | 116 | N3604.78 W11509.59 | 2142 |
| LSV | Nellis | 12 | N3614.68 W11501.50 | 1864 |
| MLF | Milford | 58 | N3821.62 W11300.79 | 4977 |
| MMM | Mormon Mesa | 90 | N3646.16 W11416.65 | 2120 |
| MVA | Mina | 98 | N3833.92 W11801.97 | 7860 |
| OAL | Coale Dale | 124 | N3800.20 W11746.23 | 4800 |
| PGS | Peach Springs | 57 | N3537.48 W11332.67 | 4754 |
| TPH | Tonopah Muni | 119 | N3801.84 W11702.01 | 5330 |
| TQQ | Silverbow | 77 | N3748.00 W11647.00 | 5500 |
| UTI | St George | 23 | N3705.29 W11335.53 | 2871 |



RWY 3L-21R
 PCN 46 R/C/W/T
 RWY 3R-21L
 PCN 51 R/C/W/T
 2017

| PAR | RWY | CAT | MINIMA | | ARP | ELEV | Scale 1:35'500 | |
|-----|-----|---------|----------------|---------------------|---------------------------------|----------------------|---------------------------------|--|
| | 21L | A B D E | 2057 - 0.8 200 | (200-0.8/1.6) GS 3° | 36° 14.060° N 115° 01.058° W | 1857 [ft] 566 [m] | 0 300 600 900 1200 1500 [m] | |
| | 3R | A B D E | 2057 - 0.8 200 | (200-0.8/1.6) GS 3° | | | 0 1000 2000 3000 4000 5000 [ft] | |
| SRA | 21R | A C D E | 2257 - 1.2 350 | (350-1.2/1.6) | | | | |
| | 3L | A C D E | 2257 - 1.2 350 | (350-1.2/1.6) | | | | |

| RWY | TORA | TODA | ASDA | LDA | PSN | THR | ALS |
|-----|---------------------|---------------------|---------------------|---------------------|--------------|---------------|-----|
| 21L | 10051 [ft] 3063 [m] | 11051 [ft] 3368 [m] | 11051 [ft] 3368 [m] | 10051 [ft] 3063 [m] | 36°14.043' N | 115°01.018' W | ⊕ |
| 3R | 10120 [ft] 3084 [m] | 11120 [ft] 3398 [m] | 11120 [ft] 3398 [m] | 10120 [ft] 3084 [m] | 36°13.029' N | 115°02.038' W | |
| | | | | | | | |
| | | | | | | | |

| ATIS | NELLIS GROUND | NELLIS TOWER | NELLIS CONTROL | TACAN | ILS RWY 21L | NELLIS EAST | NELLIS WEST |
|-------------|-------------------|------------------|----------------|---------|-------------|-------------|-------------|
| 270.100 MHz | 275.800 121.800 | 327.000 132.55 | 317.525 | LSV 12X | 109.10 Mhz | 384.400 | 385.000 |

DREAM FOUR DEPARTURE DREAM4 | **VALID 2014**

LAS VEGAS, NEVADA

ATIS
270.100
NELLIS GROUND
275.800
NELLIS TOWER
327.000
NELLIS CONTROL
317.525
NELLIS DEP/APP EAST
384.400
BLACKJACK
377.800

DREAM

N3710.34
W11459.53

MINTT
LAS 351/38
17,000

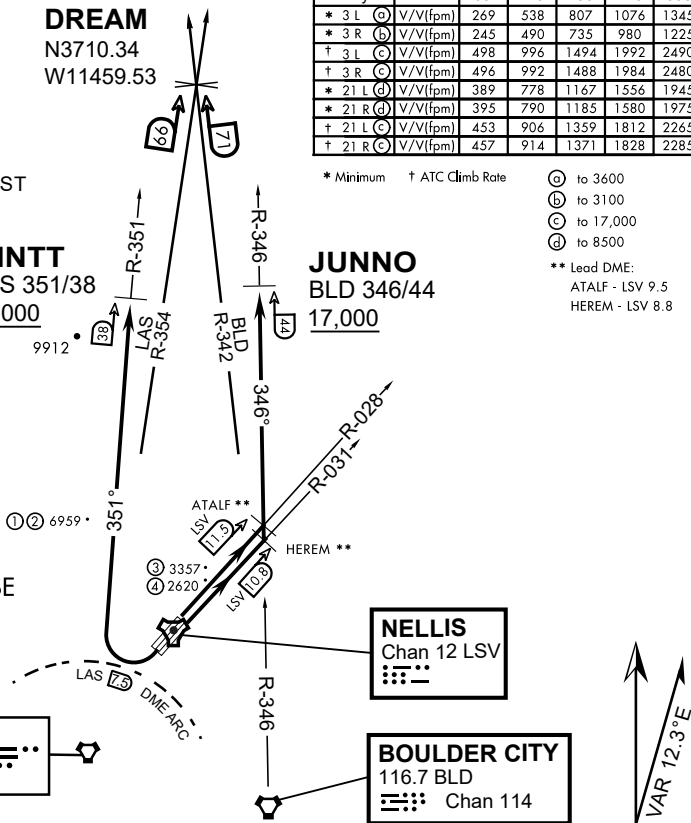
JUNNO
BLD 346/44
17,000

| Rwy | Knots | 60 | 120 | 180 | 240 | 300 | 360 |
|------------|----------|-----|-----|------|------|------|------|
| * 3 L (A) | V/V(fpm) | 269 | 538 | 807 | 1076 | 1345 | 1614 |
| * 3 R (B) | V/V(fpm) | 245 | 490 | 735 | 980 | 1225 | 1470 |
| † 3 L (C) | V/V(fpm) | 498 | 996 | 1494 | 1992 | 2490 | 2988 |
| † 3 R (C) | V/V(fpm) | 496 | 992 | 1488 | 1984 | 2480 | 2976 |
| * 21 L (D) | V/V(fpm) | 389 | 778 | 1167 | 1556 | 1945 | 2334 |
| * 21 R (D) | V/V(fpm) | 395 | 790 | 1185 | 1580 | 1975 | 2370 |
| † 21 L (C) | V/V(fpm) | 453 | 906 | 1359 | 1812 | 2265 | 2718 |
| † 21 R (C) | V/V(fpm) | 457 | 914 | 1371 | 1828 | 2285 | 2742 |

* Minimum † ATC Climb Rate

- (A) to 3600
 - (B) to 3100
 - (C) to 17,000
 - (D) to 8500
- ** Lead DME:
ATALF - LSV 9.5
HEREM - LSV 8.8

- ① 12.24 NM from Rwy 21R
- ② 12.40 NM from Rwy 21L
- ③ 5.67 NM from Rwy 3L
- ④ 5.85 NM from Rwy 3R



NOT FOR CIVIL USE

CAUTION: If unable to comply with restrictions advise ATC prior to departure.

DEPARTURE ROUTE DESCRIPTION

TAKE-OFF RWY 3L

- Fly runway heading to intercept the LSV TACAN R-028 then direct ATALF, intercept the BLD VORTAC R-346 then direct JUNNO, cross JUNNO at or above 17,000, then via assigned route.

TAKE-OFF RWY 3R

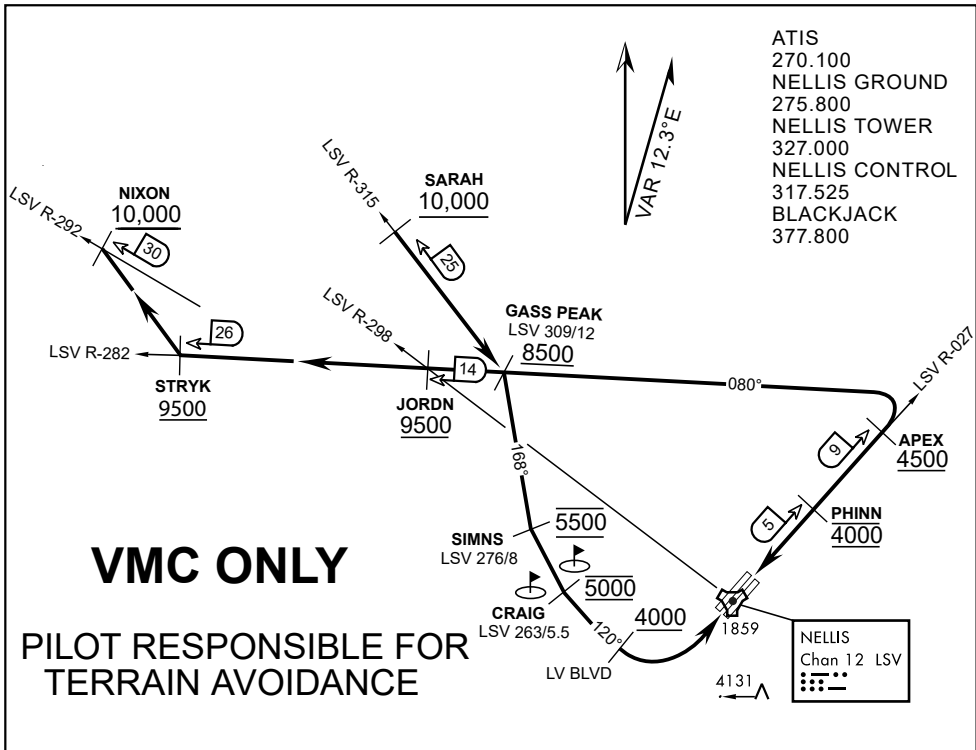
- Fly runway heading to intercept the LSV TACAN R-031 then direct HEREM, intercept the BLD VORTAC R-346 then direct JUNNO, cross JUNNO at or above 17,000, then via assigned route.

TAKE-OFF RWY 21L/R

- Turn right to intercept LAS VORTAC R-351 outbound. Remain North of LAS 7.5 DME turning Northbound. Intercept LAS R-351 between 5000 and 6000, do not proceed West of LAS R-351. Cross MINTT at or above 17,000, then via assigned route.

NOISE ABATMENT PROCEDURES: Fly acc. Nellis Noise Abatement instructions

DREAM FOUR DEPARTURE (DREAM4 • DREAM)



APPROACH ROUTE DESCRIPTION

APPROACH RWY 3L/R

Cross STRYK at or above 9,500' MSL, proceed direct GASS PEAK. Cross JORDN at or above 9,500' MSL, cross GASS PEAK at or above 8,500' MSL. Proceed direct SIMNS and cross at 5,500' MSL. Cross Las Vegas Blvd at or above 4,000' MSL then to 3,500' MSL for Initial. Remain within 4 DME if LSV on turn to final.

VFR STRAIGHT-IN RWY 3L/R

Depart CRAIG & descend to be at 3,000' MSL by Las Vegas Blvd. Do not descend below 3,000' MSL until within 5 DME of LSV or 4 NM of the runway on turn to final.

APPROACH RWY 21L/R

Cross STRYK at or above 9,500' MSL, proceed direct GASS PEAK. Cross JORDN at or above 9,500' MSL, cross GASS PEAK at or above 8,500' MSL. Cross APEX at or above 4,500' MSL then direct 5NM initial. Descend to cross PHINN at 4,000' MSL, Inside 5 NM descend to 3,500' MSL.

VFR STRAIGHT-IN RWY 21L/R

Cross APEX at 4,000' MSL. Descend to be at 3,000' MSL at PHINN. Descend to 3,000' MSL at LSV 027/5.

RANGE 63B EXIT

SOUTH: Via NIXON at or above 10,000' MSL, then direct STRYK.

EAST: Via SARAH at or above 10,000' MSL, then direct GASS PEAK.



INDIAN SPRINGS, NEVADA

| | | | |
|----------------------|------------------|----------------------|--------------|
| TACAN INS Chan 87 | APCH CRS 065° | Rwy ldg TDZE 3133 | 9002 3113 |
| | | Arpt Elev 3113 | |

INDIAN SPRINGS AF AUX (KINS)

▼ * MISSED APPROACH: Straight ahead to INS TACAN, intercept INS R-outbound, cross 17 DME at or above 9500, then direkt KSV TACAN 114

NELLIS CON

CREECH AFB TOWER
118.30 60.60

GND CON

NOT FOR CIVIL USE

FOR USE UNDER BASIC VFR WEATHER MINIMUMS ONLY

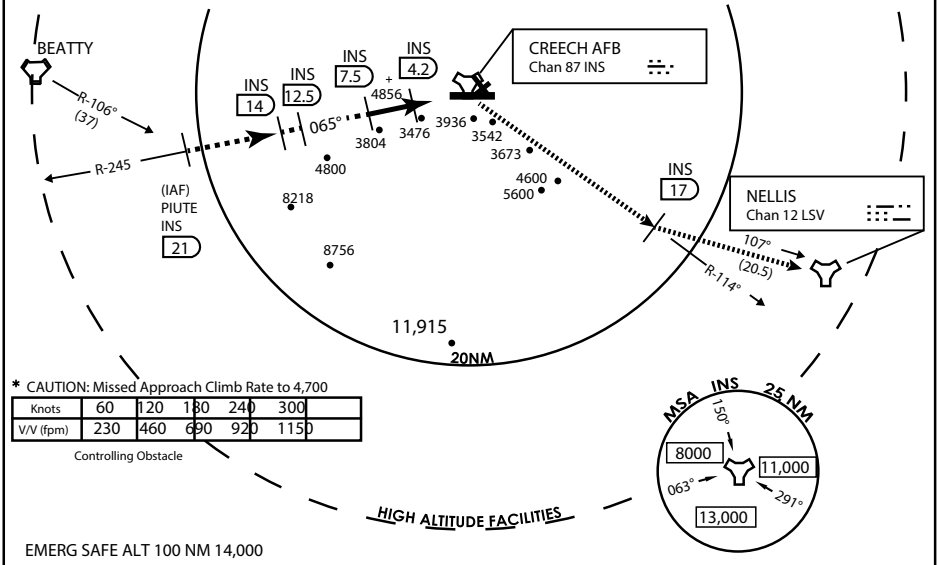
PILOT IS RESPONSIBLE FOR TERRAIN/OBSTACLE AVOIDANCE AND APPROPRIATE VFR CLOUD CLEARANCE FOR ALL

CAUTION: Descent gradients are greater than allowed under standard TERPS criteria and inbound course does not meet straight-in criteria

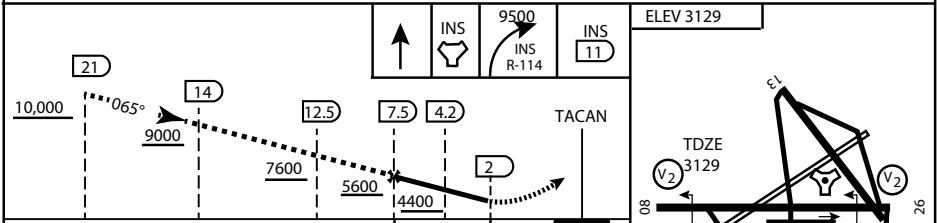
CAUTION: Final approach course crosses Runway centerline at MIDFIELD. Maneuvering left of course required prior to landing. Do not Maneuver farther north than the INS R- 258

Modified by viaBog 66 for use with DCS
NOT FOR REAL LIFE NAVIGATION

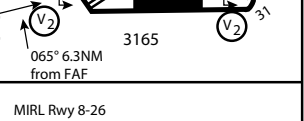
Modified by viaBog 66 for use with DCS
NOT FOR REAL LIFE NAVIGATION



EMERG SAFE ALT 100 NM 14,000



| | | | | | |
|----------|----------------|---------------|-------------------------|-----------------------|-------------------------|
| CATEGORY | A | B | C | D | E |
| S-8 | 3760-1 ½ | 627 (700-1 ½) | 3760-1¾ 627 (700-1¾) | 3760-2 627 (700-2) | 3760-2¼ 627 (700-2¼) |
| CIRCLING | NOT AUTHORIZED | | | | |



CITY OF INDIAN, NEVADA

INDIAN SPRINGS AF AUX (KINS)

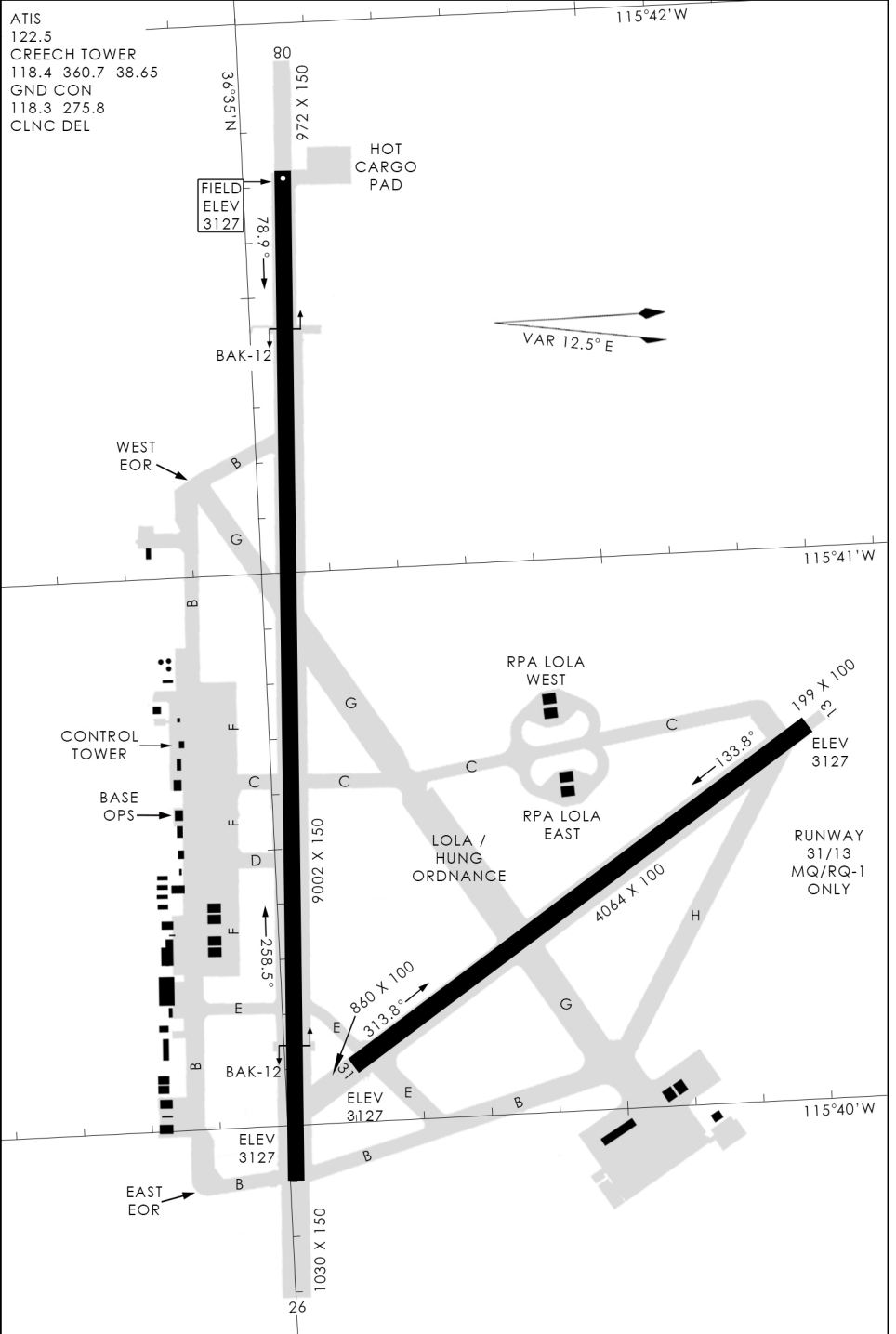
(FOR DAY VFR USE ONLY)



AIRPORT DIAGRAM

476 VFG

CREECH AFB (KINS)
INDIAN SPRINGS, NEVADA



476 VFG JAN 2019

476 VFG JAN 2019

AIRPORT DIAGRAM

INDIAN SPRINGS, NEVADA
CREECH AFB (KINS)