

MISSION DATA CARD

OPORD		Callsign		Mission		Date/Time	
3240/2024		Monster 1		Training		232000SEP24	
Task	Rocket Training					Freq	
AO	R65					132.15	
Departure				Recovery			
A10 TAC WEST				STRYK			
#	Callsign	Pilot	IFF	TCN	LSR	NET	
-1	Monster 1-1	Marsy	1411	1Y	1611	21/01	
-2	Monster 1-2	Lenzi	1412	64Y	1612	21/02	
-3	Monster 1-3	Toolface	1413	64X	1613	21/03	
-4	Monster 1-4	addiks	1414	1X	1614	21/04	

LOADOUT

A/A	2xA9M	GUN	100% CM
A/G	13x7M151	CHF	240
POD	TGP, A184L	FLR	240
TKS		FUEL	80%

TOLD

	Takeoff	Target	Joker	Bingo	Land
FUEL	8869				

AIRBASES

	Name	TCN	ATIS	GND	TWR	RWY	Elev	ILS
Dep	Nellis AFB	12X	270.1	275.8	327.0	21L	1850	109.1
Arr	Nellis AFB	12X	270.1	275.8	327.0	21L	1850	109.1

COMMS

Radio	Usage
1	132.15
2	11-3-4-16-11-4-3
3	32.00

NOTES

2x 3 LAR 6K CCIP
2x 6 LATR CCIP
2x 45 HATR CCIP
1x 10 LR CCRP

OTHER FLIGHTS

Callsign	Mission	Airframe	Freq	TCN	Grpld	Laser
Edelweiss 1	Training	2x F/A-18C	264.15	12/75	1	171X
AO	BEATTY	Task	BJT Training			
Tiger 1	Training	4x F/A-18C	261.15	1/64	1	155X
AO	Range 74.06 and 74.08	Task	AG Bomb, AAR and Formation			
Panther 2	Training	2x F/A-18C	261.25	1/64	2	156X
AO	Range 74.06 and 74.08	Task	AG Bomb, AAR and Formation			
Raptor 1	SEAD	4x F-16C	134.0	1/64		162X
AO	Groom (SAMs)	Task	SAM Evasion			
Nazgul 6	Training	4x F-15E	262.45	1/64		156X
AO	BFM Range	Task	BFM Training			
Edelweiss 4	Training	1x F/A-18C	264.45	1/64		174X
AO		Task				
Edelweiss 2	SEAD	4x F-16C	134.5	1/64		162X
AO	Groom (SAMs)	Task	SAM Evasion			
Rattler 5	Training	4x AH-64D	133.5	1/64		125X
AO		Task				

RADIO CHANNELS

#	Freq	Name
1		Flight/Squadron specific
2	289.4	Nellis Clearance Delivery
3	275.8	Nellis Ground
4	327.0	Nellis Tower
5	385.4	Nellis Approach/Departure West
6	273.55	Nellis Approach/Departure East
7	317.525	Nellis Control -- Sally
8	254.4	Nellis Control-- Lee
9	305.6	SOF Bullseye
10	343.725	EMERGENCY SINGLE FRQ
11	270.1	Nellis ATIS
12	360.625	Creech AFB Tower
13	250.1	HAVE QUICK 13
14	251.1	HAVE QUICK 14
15	252.1	HAVE QUICK 15
16	377.8	Blackjack
17	265.0	KC-135 AR-641A
18	360.8	KC-135MPRS AR-635
19	319.8	KC-135MPRS AR-625
20	300.05	KC-135 AR-231V

RAMROD

0	1	2	3	4	5	6	7	8	9
T	H	R	O	W	B	A	C	K	S

KTC 1400 C

	0	1	2	3	4	5	6	7	8	9
A	NCJH	FQU	MGS	OW	VA	EBP	DX	IY	LR	TK
B	THBE	UWO	XKL	NP	AY	VSR	DG	JI	QC	FM
C	FKHI	LDS	RAT	PX	GJ	YUB	VN	OQ	EC	MW
D	BMNO	SRJ	CDU	EY	XP	HKV	LF	GW	TI	QA
E	TRXG	DVF	IOK	EL	SW	MPJ	CQ	AU	BY	NH
F	RTEC	WXB	LAD	SJ	FM	IQO	PK	GV	NY	UH
G	MXOI	JGH	BTA	LV	UR	NYF	EP	KD	CQ	SW
H	HIEG	CUT	JRQ	YX	BO	WPL	KN	AD	SF	MV
I	KLPO	RCN	YID	TX	BQ	UWS	HV	AM	EF	JG
J	QBNO	LXP	RFJ	HK	YG	IVW	EA	SD	UM	TC
K	FIMT	VAW	DQC	LY	OJ	NUS	HR	XB	PE	KG
L	TYNM	ORI	WKV	QA	DJ	EPG	CF	SB	LX	HU
M	FJRC	EUV	YMD	PO	HG	BTI	QL	AS	XN	WK
N	PVQE	AYS	BUR	GD	MN	WJH	CO	IF	KX	LT
O	ALBE	INP	CGX	FK	JU	YTD	WR	MQ	OH	SV
P	NXMT	FQL	SEY	WI	CR	UJA	VP	GH	BK	OD
Q	IAJK	SGQ	FCO	DB	ML	XUP	RE	YV	TH	NW
R	XWDN	TFR	YGJ	VO	SP	BHI	AK	EQ	ML	UC
S	YRVH	JOT	NXD	KB	SM	AFE	LC	IQ	UP	WG
T	CWJO	XRV	LKG	AE	UB	YSN	IM	HT	FP	DQ
U	ECTW	KMB	QFD	YX	VU	IPJ	HS	GN	AO	LR
V	JEXY	ABU	LOC	PD	MQ	FNW	SV	RH	TG	KI
W	GSTH	QDL	NVX	OF	KR	MEU	PW	IJ	BY	CA
X	GHVA	DCO	WYM	EP	NK	LIU	FJ	QX	TR	SB
Y	OYFJ	GXE	TQI	AL	WH	KDV	BC	NU	PM	RS

NAVAIDS

Id	Name	Channel	Position	Elevation
BCE	Bryce Canyon	75	N3741.35 W11218.23	9040
BIH	Bishop	33	N3722.62 W11821.99	4114
BLD	Boulder	114	N3559.75 W11451.82	3650
BTY	Beatty	94	N3648.54 W11644.86	2925
CDC	Cedar City	120	N3747.24 W11304.90	5463
DAG	Daggett	79	N3457.75 W11634.69	1760
EED	Needles	99	N3445.96 W11428.43	650
GFS	Goffs	91	N3507.87 W11510.59	4019
GRL	Groom Lake	18	N3713.91 W11548.16	4475
HEC	Hector	74	N3447.83 W11627.78	1854
ILC	Wilson Creek	110	N3815.02 W11423.65	9318
INS	Creech AFB	87	N3635.20 W11540.12	3101
LAS	McCarran Intl	116	N3604.78 W11509.59	2142
LSV	Nellis	12	N3614.68 W11501.50	1864
MLF	Milford	58	N3821.62 W11300.79	4977
MMM	Mormon Mesa	90	N3646.16 W11416.65	2120
MVA	Mina	98	N3833.92 W11801.97	7860
OAL	Coale Dale	124	N3800.20 W11746.23	4800
PGS	Peach Springs	57	N3537.48 W11332.67	4754
TPH	Tonopah Muni	119	N3801.84 W11702.01	5330
TQQ	Silverbow	77	N3748.00 W11647.00	5500
UTI	St George	23	N3705.29 W11335.53	2871



RWY 3L-21R
 PCN 46 R/C/W/T
 RWY 3R-21L
 PCN 51 R/C/W/T
 2017

PAR	RWY	CAT	MINIMA		ARP	ELEV	Scale 1:35'500	
	21L	A B D E	2057 - 0.8 200	(200-0.8/1.6) GS 3°	36° 14.060° N 115° 01.058° W	1857 [ft] 566 [m]	0	300
	3R	A B D E	2057 - 0.8 200	(200-0.8/1.6) GS 3°			600	900
	21R	A C D E	2257 - 1.2 350	(350-1.2/1.6)			1200	1500 [m]
	3L	A C D E	2257 - 1.2 350	(350-1.2/1.6)			0	1000
							2000	3000
							4000	5000 [ft]

RWY	TORA	TODA	ASDA	LDA	PSN	THR	ALS
21L	10051 [ft] 3063 [m]	11051 [ft] 3368 [m]	11051 [ft] 3368 [m]	10051 [ft] 3063 [m]	36°14.043' N	115°01.018' W	⊕
3R	10120 [ft] 3084 [m]	11120 [ft] 3398 [m]	11120 [ft] 3398 [m]	10120 [ft] 3084 [m]	36°13.029' N	115°02.038' W	

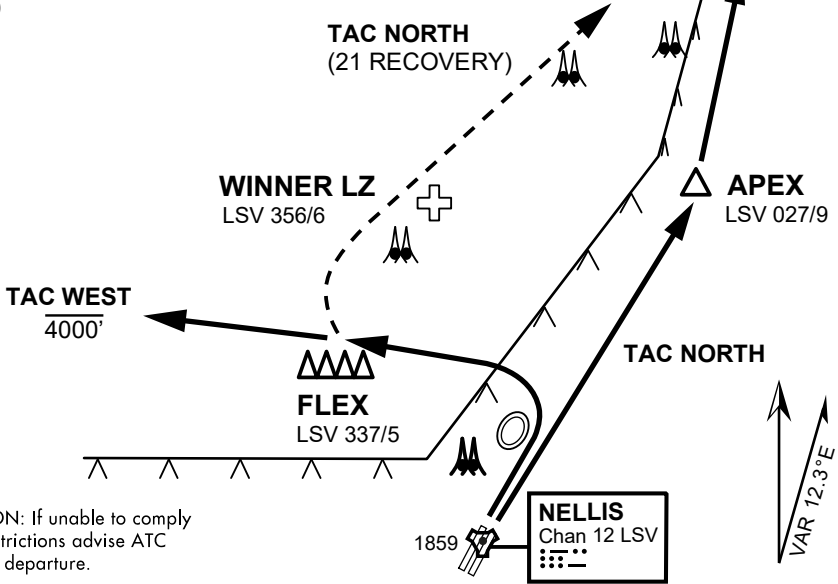
ATIS	NELLIS GROUND	NELLIS TOWER	NELLIS CONTROL	TACAN	ILS RWY 21L	NELLIS EAST	NELLIS WEST
270.100 MHz	275.800 121.800	327.000 132.55	317.525	LSV 12X	109.10 Mhz	384.400	385.000

ATIS
270.100
NELLIS GROUND
275.800
NELLIS TOWER
327.000
NELLIS CONTROL
317.525
NELLIS DEP/APP EAST
384.400
BLACKJACK
377.800

VMC ONLY

PILOT RESPONSIBLE FOR
TERRAIN AVOIDANCE

DRY LAKE
LSV 017/15



CAUTION: If unable to comply with restrictions advise ATC prior to departure.

NELLIS
Chan 12 LSV

VAR 12.3°E



DEPARTURE ROUTE DESCRIPTION

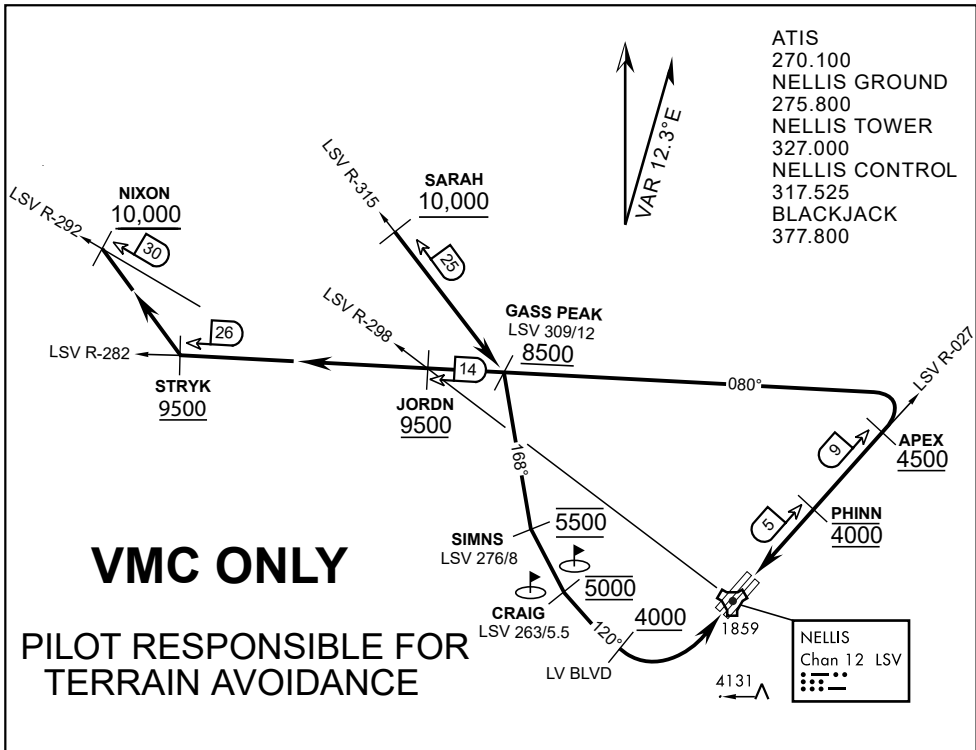
- Tac North / Tac West departures only flown during daylight from RWY 03
- Use caution for helicopters operating 3 Nm NE of FLEX (Winner LZ).
- Flights will remain at 500' AGL until deconflicted with helicopter traffic.
- Upon reaching FLEX or Dry Lake maintain VFR, remain clear of Class B airspace, and switch frequency to coordinate for range entry.

TAC NORTH

- Proceed direct APEX then direct Dry Lake. Report "APEX" informing ATC flight will clear Class B in 3Nm enroute to Dry Lake.
- For opposite direction takeoffs when RWY 21 is the active, proceed to FLEX then to Dry Lake.
- Report "FLEX" to inform ATC flight is clear of Class B airspace. Use caution for helicopter training.

TAC WEST:

- Proceed to FLEX. Report "FLEX" to inform ATC flight is clear of Class B airspace. Remain below 4000' MSL until north of Gass Peak.



APPROACH ROUTE DESCRIPTION

APPROACH RWY 3L/R

Cross STRYK at or above 9,500' MSL, proceed direct GASS PEAK. Cross JORDN at or above 9,500' MSL, cross GASS PEAK at or above 8,500' MSL. Proceed direct SIMNS and cross at 5,500' MSL. Cross Las Vegas Blvd at or above 4,000' MSL then to 3,500' MSL for Initial. Remain within 4 DME if LSV on turn to final.

VFR STRAIGHT-IN RWY 3L/R

Depart CRAIG & descend to be at 3,000' MSL by Las Vegas Blvd. Do not descend below 3,000' MSL until within 5 DME of LSV or 4 NM of the runway on turn to final.

APPROACH RWY 21L/R

Cross STRYK at or above 9,500' MSL, proceed direct GASS PEAK. Cross JORDN at or above 9,500' MSL, cross GASS PEAK at or above 8,500' MSL. Cross APEX at or above 4,500' MSL then direct 5NM initial. Descend to cross PHINN at 4,000' MSL, Inside 5 NM descend to 3,500' MSL.

VFR STRAIGHT-IN RWY 21L/R

Cross APEX at 4,000' MSL. Descend to be at 3,000' MSL at PHINN. Descend to 3,000' MSL at LSV 027/5.

RANGE 63B EXIT

SOUTH: Via NIXON at or above 10,000' MSL, then direct STRYK.
EAST: Via SARAH at or above 10,000' MSL, then direct GASS PEAK.