

MISSION DATA CARD

OPORD		Callsign		Mission		Date/Time		
3217/2024		Edelweiss 4		Training		171815SEP24		
Task						Freq		
AO						264.45		
Departure				Recovery				
FYTTR LOW				STRYK				
#	Callsign		Pilot		IFF	TCN	LSR	NET
-1	Edelweiss 4-1		Monte		1741	1Y	1741	

LOADOUT

A/A	2xA9X				GUN	100% HEI-T	
A/G					CHF	120	
POD					FLR	0	
TKS	FPU-8A				FUEL	50%	

TOLD

	Takeoff	Target	Joker	Bingo	Land
FUEL	7645				

AIRBASES

	Name	TCN	ATIS	GND	TWR	RWY	Elev	ILS
Dep	Nellis AFB	12X	270.1	275.8	327.0	21L	1850	109.1
Arr	Nellis AFB	12X	270.1	275.8	327.0	21L	1850	109.1

FLIGHTPLAN

#	Name	Navaid/Coords/DME	ALT	TOT
1	FYTTR	LSV 269/33 (N36 21.440 W115 41.470)		
2	Beatty	N36 48.540 W116 44.860		
3	STRYK	LSV 282/26 (N36 25.620 W115 30.700)	9500	
4	GASS PEAK	LSV 309/12 (N36 24.140 W115 10.660)	8500	
5	APEX	LSV 027/09 (N36 21.580 W114 54.340)	4500	

OTHER FLIGHTS

Callsign	Mission	Airframe	Freq	TCN	GrpId	Laser
Edelweiss 1	Training	1x F/A-18C	264.15	12/75	1	171X
AO		Task	Departure & Arrival Training, BFT Maneuvers			

RADIO CHANNELS

#	Freq	Name
1		Flight/Squadron specific
2	289.4	Nellis Clearance Delivery
3	275.8	Nellis Ground
4	327.0	Nellis Tower
5	385.4	Nellis Approach/Departure West
6	273.55	Nellis Approach/Departure East
7	317.525	Nellis Control -- Sally
8	254.4	Nellis Control-- Lee
9	305.6	SOF Bullseye
10	343.725	EMERGENCY SINGLE FRQ
11	270.1	Nellis ATIS
12	360.625	Creech AFB Tower
13	250.1	HAVE QUICK 13
14	251.1	HAVE QUICK 14
15	252.1	HAVE QUICK 15
16	377.8	Blackjack
17	265.0	KC-135 AR-641A
18	360.8	KC-135MPRS AR-635
19	319.8	KC-135MPRS AR-625
20	300.05	KC-135 AR-231V

RAMROD

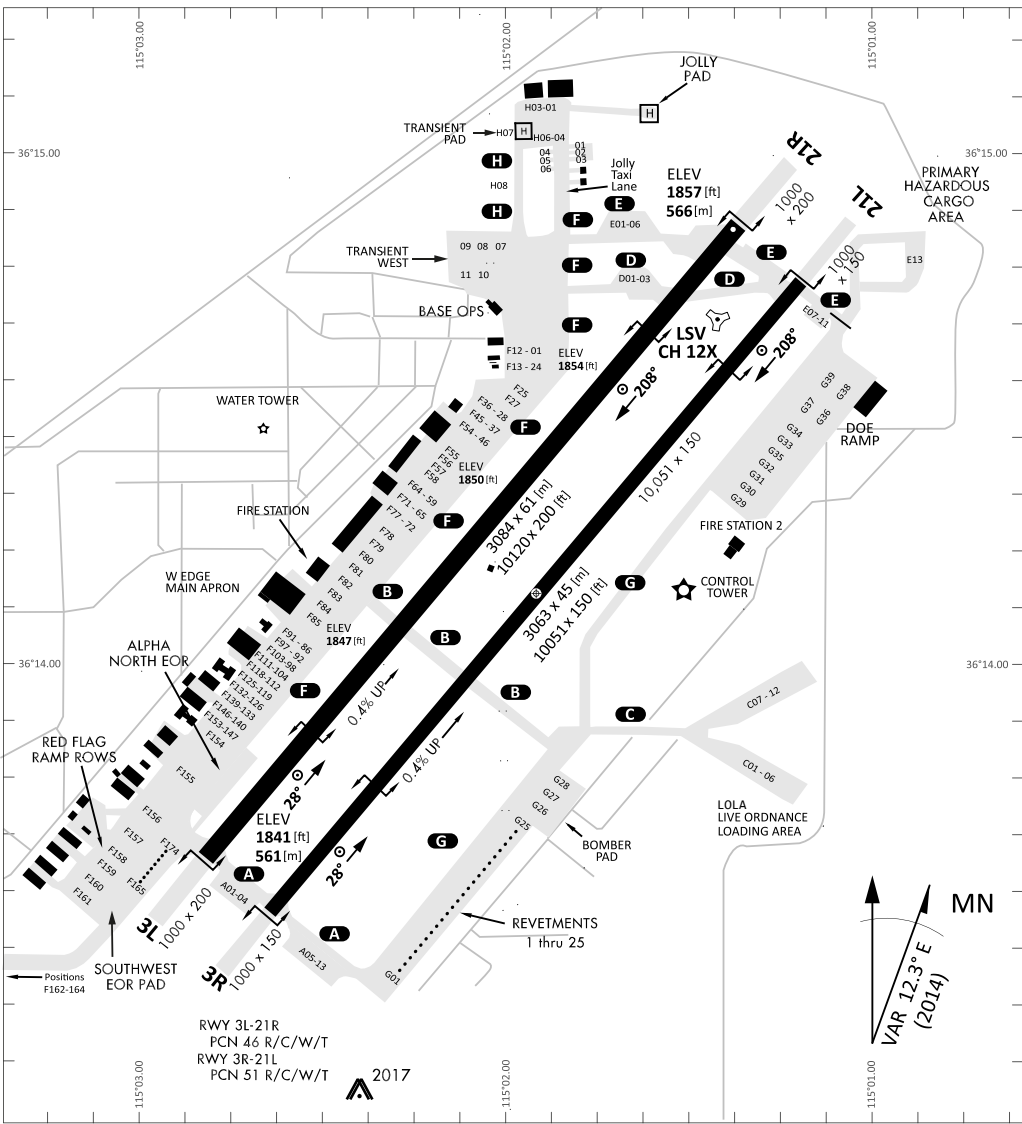
0	1	2	3	4	5	6	7	8	9
B	I	F	U	R	C	A	T	E	D

KTC 1400 C

	0	1	2	3	4	5	6	7	8	9
A	PJAS	NCO	RDH	VE	KG	FTY	LB	QW	UI	MX
B	SQUE	HWA	CNG	YL	KB	XPI	MR	JD	OV	TF
C	NAFL	KBD	HWO	EM	PS	XVC	QU	JT	GR	IY
D	TMWE	PHU	KIQ	FB	CG	VXD	YL	RN	AS	JO
E	LBIA	DKJ	PXU	CR	FE	VHG	WY	NQ	MT	OS
F	VJYG	MUW	EBQ	CX	FL	OTN	HI	KS	AP	RD
G	EPAL	HUT	QKI	FG	OV	SXD	BW	NJ	MY	RC
H	LABU	QGR	FIE	TK	VS	PMN	WJ	CY	XD	HO
I	HTVC	EMU	WPQ	DG	JL	KXS	IA	RO	NB	FY
J	CBXV	YJE	DQH	MF	TU	GWL	PI	KS	AR	NO
K	NULJ	BTE	OKX	CV	WH	YPD	QF	GA	RI	MS
L	TUMW	RJH	NPF	DE	CV	IGL	YX	QO	SK	AB
M	UEVF	BJG	NWO	IM	TP	HLS	YA	RK	QD	XC
N	GRQO	LJA	CIX	SW	VE	BNY	DK	MF	UT	HP
O	DOAT	YCN	PFQ	BU	JK	LIX	RS	HV	WE	GM
P	BQSI	WCM	TRL	KY	UA	JNH	VD	FG	EP	OX
Q	MRWX	YJH	TSI	KQ	AG	LPB	DV	EC	FU	ON
R	QWAS	UNV	KPC	RF	YD	GJI	HX	BL	OT	EM
S	QTJV	LFH	DYP	NA	XK	WSM	OE	UC	BG	RI
T	TAML	OCY	PDR	HJ	SK	EFQ	IG	VU	BW	NX
U	NWDF	OIU	BYX	ET	VJ	GCP	KH	MQ	LR	SA
V	LFIX	HNS	VJK	WM	TA	BEP	RQ	YC	DO	UG
W	FAPL	DQT	RVS	NU	CO	BWH	GI	KX	JE	YM
X	OKJM	QCY	LAR	UF	ED	NWX	PB	HS	VG	TI
Y	NVEY	XQR	LCD	UH	SP	ABJ	TI	MF	WO	GK

NAVAIDS

Id	Name	Channel	Position	Elevation
BCE	Bryce Canyon	75	N3741.35 W11218.23	9040
BIH	Bishop	33	N3722.62 W11821.99	4114
BLD	Boulder	114	N3559.75 W11451.82	3650
BTY	Beatty	94	N3648.54 W11644.86	2925
CDC	Cedar City	120	N3747.24 W11304.90	5463
DAG	Daggett	79	N3457.75 W11634.69	1760
EED	Needles	99	N3445.96 W11428.43	650
GFS	Goffs	91	N3507.87 W11510.59	4019
GRL	Groom Lake	18	N3713.91 W11548.16	4475
HEC	Hector	74	N3447.83 W11627.78	1854
ILC	Wilson Creek	110	N3815.02 W11423.65	9318
INS	Creech AFB	87	N3635.20 W11540.12	3101
LAS	McCarran Intl	116	N3604.78 W11509.59	2142
LSV	Nellis	12	N3614.68 W11501.50	1864
MLF	Milford	58	N3821.62 W11300.79	4977
MMM	Mormon Mesa	90	N3646.16 W11416.65	2120
MVA	Mina	98	N3833.92 W11801.97	7860
OAL	Coale Dale	124	N3800.20 W11746.23	4800
PGS	Peach Springs	57	N3537.48 W11332.67	4754
TPH	Tonopah Muni	119	N3801.84 W11702.01	5330
TQQ	Silverbow	77	N3748.00 W11647.00	5500
UTI	St George	23	N3705.29 W11335.53	2871



RWY 3L-21R
 PCN 46 R/C/W/T
 RWY 3R-21L
 PCN 51 R/C/W/T
 2017

PAR	RWY	CAT	MINIMA		ARP	ELEV	Scale 1:35'500	
	21L	A B D E	2057 - 0.8 200 (200-0.8/1.6)	GS 3°	36° 14.060° N 115° 01.058° W	1857 [ft] 566 [m]	0 300 600 900 1200 1500 [m]	
	3R	A B D E	2057 - 0.8 200 (200-0.8/1.6)	GS 3°			0 1000 2000 3000 4000 5000 [ft]	
SRA	21R	A C D E	2257 - 1.2 350 (350-1.2/1.6)					
	3L	A C D E	2257 - 1.2 350 (350-1.2/1.6)					

RWY	TORA	TODA	ASDA	LDA	PSN	THR	ALS
21L	10051 [ft] 3063 [m]	11051 [ft] 3368 [m]	11051 [ft] 3368 [m]	10051 [ft] 3063 [m]	36°14.043' N	115°01.018' W	⊕
3R	10120 [ft] 3084 [m]	11120 [ft] 3398 [m]	11120 [ft] 3398 [m]	10120 [ft] 3084 [m]	36°13.029' N	115°02.038' W	

ATIS	NELLIS GROUND	NELLIS TOWER	NELLIS CONTROL	TACAN	ILS RWY 21L	NELLIS EAST	NELLIS WEST
270.100 MHz	275.800 121.800	327.000 132.55	317.525	LSV 12X	109.10 Mhz	384.400	385.000

FYTTR LOW VISUAL OPERATION CHART | VALID 2014

ATIS
270.100
NELLIS GROUND
275.800
NELLIS TOWER
327.000
NELLIS CONTROL
317.525
NELLIS DEP/APP EAST
384.400
BLACKJACK
377.800

CAUTION: If unable to comply with restrictions advise ATC prior to departure.



VMC ONLY

PILOT RESPONSIBLE FOR TERRAIN AVOIDANCE

① 4 NM from RWY 3L/R

BEATTY
Chan 94 BTY

RANGE 64/65
RANGE 63

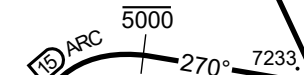
TUCKY

R-2508

LSV R-269
285°

FYTTR
N3621.44
W11541.47

BTY R-105
20



FLEX
LSV 337/5

2086 M
① 3000

NELLIS
Chan 12 LSV

4131



DEPARTURE ROUTE DESCRIPTION

TAKEOFF RWY 3L/R:

- Remain below 3,000' MSL until north of Race Track and turned westbound.
- Turn left within 4NM of Nellis direct FLEX. Fly north of FLEX and turn left heading 270°.
- Intercept LSV 15 DME ARC at or below 5,000' MSL.
- ARC south, intercept LSV R-269 outbound. Maintain VFR.

TAKEOFF RWY 21L/21R:

- Follow Noise Abatement Procedures.
- Fly runway heading until past Golf Course, turn right heading 300°.
- Cross LSV R-255 between 5,000' and 6,000' , intercept and proceed outbound on the LSV R-269.Recommend climb to 8,500' MSL or appropriate VFR altitude for overflight of North Las Vegas Training Area. Fly routing for appr. mission/transition.

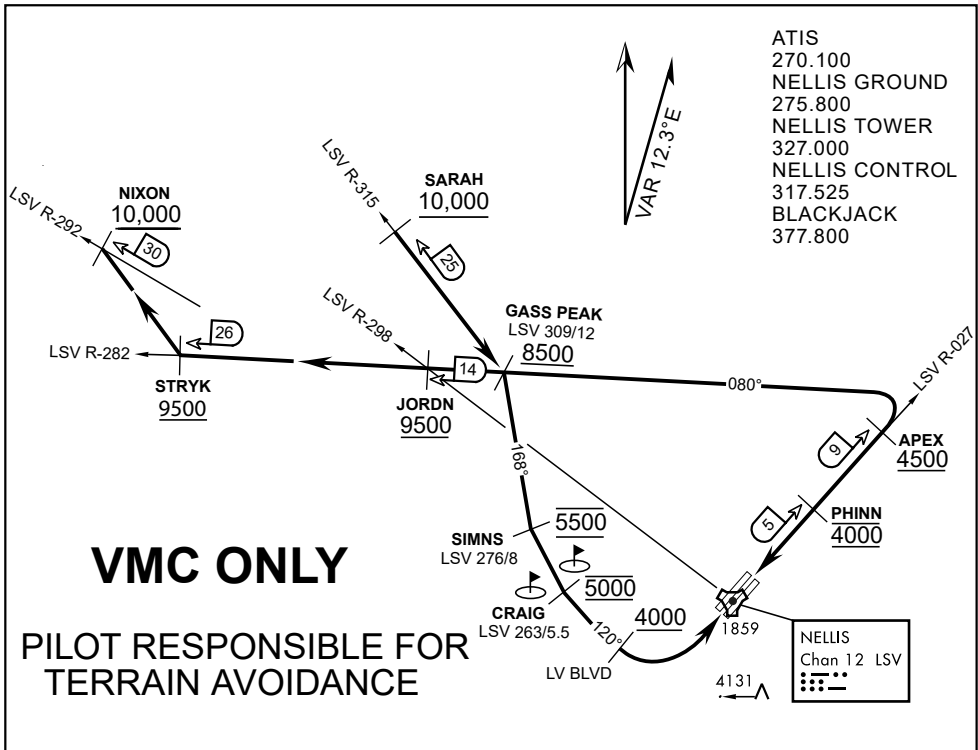
TRANSITIONS:

R-4806: Turn right at the LSV 269/20 direct to assigned ranges.

BEATTY: Turn right at FYTTR direct BTY via the BTY R-105

R-2508: Turn right at the FYTTR, intercept the BTY 105/30, direct TUCKY, then direct R-2508

FYTTR DEPARTURE AND TRANSITIONS (FYTTR LOW)



APPROACH ROUTE DESCRIPTION

APPROACH RWY 3L/R

Cross STRYK at or above 9,500' MSL, proceed direct GASS PEAK. Cross JORDN at or above 9,500' MSL, cross GASS PEAK at or above 8,500' MSL. Proceed direct SIMNS and cross at 5,500' MSL. Cross Las Vegas Blvd at or above 4,000' MSL then to 3,500' MSL for Initial. Remain within 4 DME if LSV on turn to final.

VFR STRAIGHT-IN RWY 3L/R

Depart CRAIG & descend to be at 3,000' MSL by Las Vegas Blvd. Do not descend below 3,000' MSL until within 5 DME of LSV or 4 NM of the runway on turn to final.

APPROACH RWY 21L/R

Cross STRYK at or above 9,500' MSL, proceed direct GASS PEAK. Cross JORDN at or above 9,500' MSL, cross GASS PEAK at or above 8,500' MSL. Cross APEX at or above 4,500' MSL then direct 5NM initial. Descend to cross PHINN at 4,000' MSL, Inside 5 NM descend to 3,500' MSL.

VFR STRAIGHT-IN RWY 21L/R

Cross APEX at 4,000' MSL. Descend to be at 3,000' MSL at PHINN. Descend to 3,000' MSL at LSV 027/5.

RANGE 63B EXIT

SOUTH: Via NIXON at or above 10,000' MSL, then direct STRYK.
EAST: Via SARAH at or above 10,000' MSL, then direct GASS PEAK.