

MISSION DATA CARD

OPORD		Callsign		Mission		Date/Time	
3208/2024		Raptor 2		Training		162000SEP24	
Task	A2G - Gun Pattern					Freq	
AO	R66					134.0	
Departure				Recovery			
DREAM FOUR				STRYK			
#	Callsign	Pilot	IFF	TCN	LSR	NET	
-1	Raptor 2-1	Cyking	1621	1Y	1621		
-2	Raptor 2-2	Jinx	1622	64Y	1622		
-3	Raptor 2-3	Newbie	1623	64X	1623		

LOADOUT

A/A	2xA120C, 2xC9M			GUN	100% HEI-T
A/G				CHF	120
POD				FLR	0
TKS	2xFT300			FUEL	100%

TOLD

	Takeoff	Target	Joker	Bingo	Land
FUEL	11169			3000	

AIRBASES

	Name	TCN	ATIS	GND	TWR	RWY	Elev	ILS
Dep	Nellis AFB	12X	270.1	275.8	327.0	21L	1850	109.1
Arr	Nellis AFB	12X	270.1	275.8	327.0	21L	1850	109.1

FLIGHTPLAN

#	Name	Navaid/Coords/DME	ALT	TOT
1	FYTTR	LSV 269/33 (N36 21.440 W115 41.470)	13000	
2	HEINY	N35 51.500 W116 32.500	23000	
3	IP	N35 34.881 W116 30.132	15000	
4	T66.01	N35 34.881 W116 42.391	0	
5	ROCK	N36 34 W115 57	23000	
6	STRYK	LSV 282/26 (N36 25.620 W115 30.700)	13000	
7	LSV	N36 14.680 W115 01.500	0	

COMMS

Radio	Usage
1	11,3,4,16,11,4,3

NOTES

66-01

ARMORED CONVOY

7 combat vehicles, some armored, in a deployed convoy heading SE.

Waypoint: T66.01

Elevation: 1959

MGRS: 11S NV 26590 37555

DD°MM.MMM' N: 35°34.881'

DDD°MM.MMM' W: 116°42.390'

DD°MM'SS" N: 35°34'52"

DDD°MM'SS" W: 116°42'23"

66-03

ARMORED CONVOY

7 combat vehicles, some armored, in a deployed convoy heading east. Spacing approx 300-400ft.

Waypoint: T66.03

Elevation: 2408

MGRS: 11S NV 22165 36414

DD°MM.MMM' N: 35°34.270'

DDD°MM.MMM' W: 116°45.323'

DD°MM'SS" N: 35°34'16"

DDD°MM'SS" W: 116°45'19"

SUPPORT**Tanker**

Callsign	TCN	Freq	ALT	TAS
TEXACO 2	95Y	289.7	FL220	420
	Pos	Pegasus.1: CDC 166/102 (N3730 W11440)		
TEXACO 1	94Y	265.0	17000	290
	Pos	AR-641A: CDC 242/78 (N3728 W11439)		

AWACS

Callsign	Freq	ALT	Pos
MAGIC	377.8	FL270	N3749 W11417 - N3713 W11446

OTHER FLIGHTS

Callsign	Mission	Airframe	Freq	TCN	Grpld	Laser
Edelweiss 1	Training	2x F-16C	134.5	1/64		171X
AO	NTTR	Task	Fam Flight			
Edelweiss 3	Training	4x F/A-18C	264.35	1/64		173X
AO	RANGE 64C	Task	TRAINING			
Edelweiss 5	Training	2x F/A-18C	264.55	1/64		175X
AO	BTY	Task	TRAINING			
Joker* 1	Training	1x CH-47F	125.1	1/64		170X
AO		Task				
Edelweiss 4	Training	1x F/A-18C	264.45	1/64		174X
AO		Task				
Nazgul 6	Training	4x F-15E	262.45	1/64		116X
AO		Task				
Rattler 1	Training	4x AH-64D	133.5	1/64		125X
AO	Nellis, winner	Task	basic pattern			
T-Rex 2	Training	4x A-10C	132.25	1/64	25	165X
AO	R62	Task	JDAm			

RADIO CHANNELS

#	Freq	Name
1		Flight/Squadron specific
2	289.4	Nellis Clearance Delivery
3	275.8	Nellis Ground
4	327.0	Nellis Tower
5	385.4	Nellis Approach/Departure West
6	273.55	Nellis Approach/Departure East
7	317.525	Nellis Control -- Sally
8	254.4	Nellis Control-- Lee
9	305.6	SOF Bullseye
10	343.725	EMERGENCY SINGLE FRQ
11	270.1	Nellis ATIS
12	360.625	Creech AFB Tower
13	250.1	HAVE QUICK 13
14	251.1	HAVE QUICK 14
15	252.1	HAVE QUICK 15
16	377.8	Blackjack
17	265.0	KC-135 AR-641A
18	360.8	KC-135MPRS AR-635
19	319.8	KC-135MPRS AR-625
20	300.05	KC-135 AR-231V

RAMROD

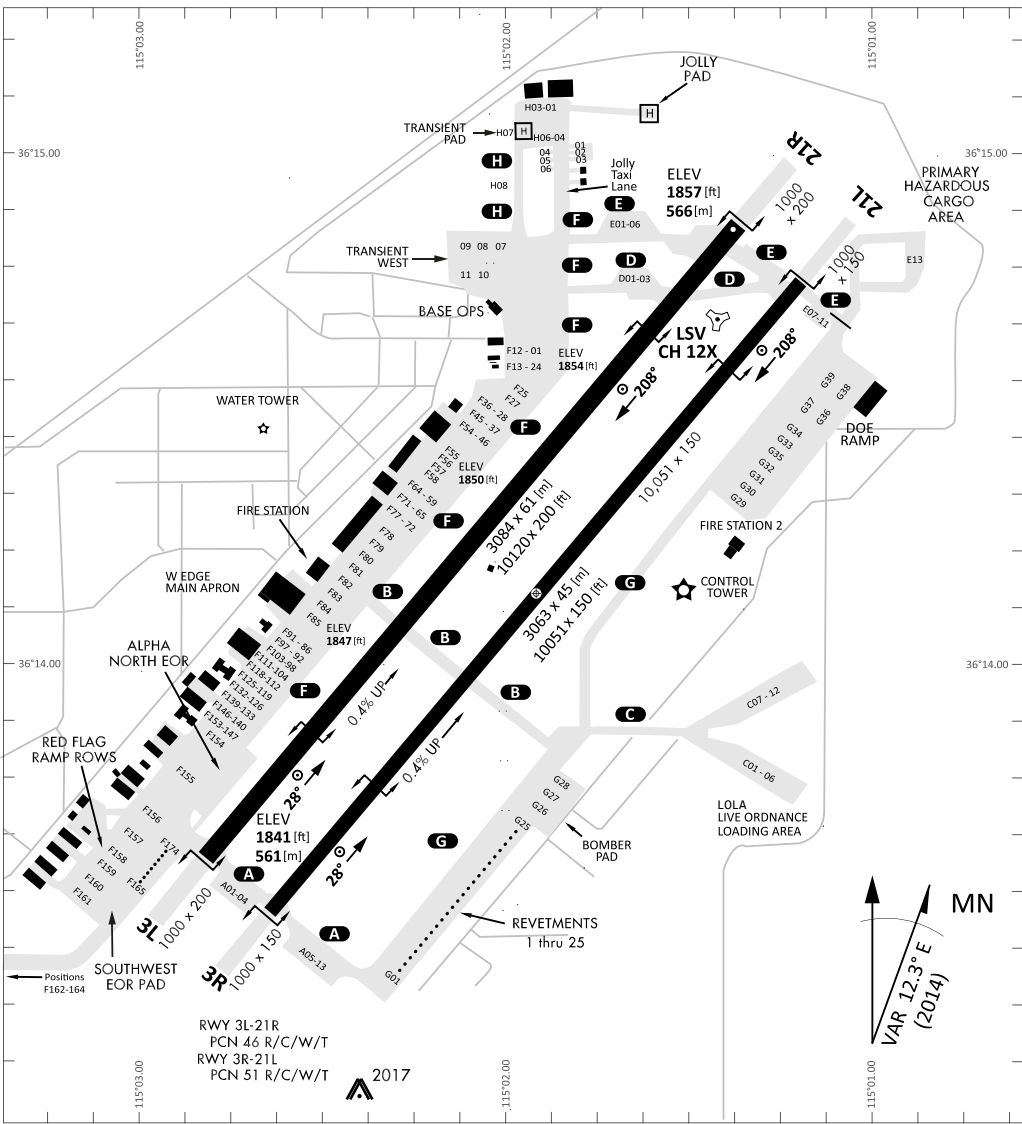
0	1	2	3	4	5	6	7	8	9
C	H	I	V	A	L	R	O	U	S

KTC 1400 C

	0	1	2	3	4	5	6	7	8	9
A	FEMH	OTL	ABN	CG	WD	JXR	QI	VY	KP	SU
B	QABN	IPY	FMU	KR	XO	HEV	CD	TG	LS	JW
C	NSQX	YLD	TFW	UH	EG	BRO	PM	CV	AJ	IK
D	VEML	UBK	SQH	GP	CR	XWI	FN	YJ	AT	OD
E	WRYA	IBM	SCD	GF	JH	OPV	TL	NE	UX	QK
F	YDRH	PNI	CJF	SE	QT	BVX	OU	WM	AL	GK
G	UCDF	TVJ	OQK	RI	GW	YLS	PB	MN	XA	HE
H	WOMY	UIJ	FSA	DH	QP	VLR	BT	KX	EG	CN
I	GTML	BEN	SFW	RC	AJ	VDX	HQ	UP	OI	YK
J	JLHI	RGK	SBF	OC	ED	XNM	PY	WV	QT	UA
K	KEUD	VAH	SLF	WP	XC	TNB	RG	IM	YQ	JO
L	QTAM	VUN	HRX	SB	LD	FJK	WE	PI	CO	YG
M	TWAE	UOC	GJV	LR	QX	PFN	BI	KM	DY	SH
N	CNTV	FJY	OHR	GD	WQ	KUE	LM	PX	IB	SA
O	KSQP	EDA	VFH	YR	CI	WBX	NO	LG	MJ	TU
P	NHVD	QGP	WFE	OB	JU	XLT	SA	MR	IK	CY
Q	STYJ	CWE	NUX	BM	VK	PRL	FH	AI	GD	QO
R	KICH	FSU	EPR	AD	XO	TBQ	GJ	NM	WY	LV
S	WCUG	POY	VTE	JH	SK	IMA	XD	NR	BL	QF
T	EOCW	JSY	UXT	BV	RN	MHK	IG	AD	FL	QP
U	VRQY	TGH	XNJ	OC	ML	SAD	UF	WP	KE	IB
V	EMBL	XND	VWP	AT	KS	QJF	RC	OY	IG	UH
W	DTMI	HOP	QWX	RU	LS	BAN	EG	JF	VK	CY
X	MWVA	JYX	UPT	BQ	IS	NRE	CF	HD	GK	OL
Y	SGDU	PFA	CQM	OL	YR	VTJ	IX	HN	KE	BW

NAVAIDS

Id	Name	Channel	Position	Elevation
BCE	Bryce Canyon	75	N3741.35 W11218.23	9040
BIH	Bishop	33	N3722.62 W11821.99	4114
BLD	Boulder	114	N3559.75 W11451.82	3650
BTY	Beatty	94	N3648.54 W11644.86	2925
CDC	Cedar City	120	N3747.24 W11304.90	5463
DAG	Daggett	79	N3457.75 W11634.69	1760
EED	Needles	99	N3445.96 W11428.43	650
GFS	Goffs	91	N3507.87 W11510.59	4019
GRL	Groom Lake	18	N3713.91 W11548.16	4475
HEC	Hector	74	N3447.83 W11627.78	1854
ILC	Wilson Creek	110	N3815.02 W11423.65	9318
INS	Creech AFB	87	N3635.20 W11540.12	3101
LAS	McCarran Intl	116	N3604.78 W11509.59	2142
LSV	Nellis	12	N3614.68 W11501.50	1864
MLF	Milford	58	N3821.62 W11300.79	4977
MMM	Mormon Mesa	90	N3646.16 W11416.65	2120
MVA	Mina	98	N3833.92 W11801.97	7860
OAL	Coale Dale	124	N3800.20 W11746.23	4800
PGS	Peach Springs	57	N3537.48 W11332.67	4754
TPH	Tonopah Muni	119	N3801.84 W11702.01	5330
TQQ	Silverbow	77	N3748.00 W11647.00	5500
UTI	St George	23	N3705.29 W11335.53	2871



PAR	RWY	CAT	MINIMA			ARP	ELEV	Scale 1:35'500	
	21L	A B D E	2057 - 0.8 200	(200-0.8/1.6)	GS 3°	36° 14.060° N	1857 [ft]	0	300
	3R	A B D E	2057 - 0.8 200	(200-0.8/1.6)	GS 3°	115° 01.058° W	566 [m]	0	1000
	21R	A C D E	2257 - 1.2 350	(350-1.2/1.6)				0	2000
	3L	A C D E	2257 - 1.2 350	(350-1.2/1.6)				0	5000

RWY	TORA	TODA	ASDA	LDA	PSN	THR	ALS
21L	10051 [ft] 3063 [m]	11051 [ft] 3368 [m]	11051 [ft] 3368 [m]	10051 [ft] 3063 [m]	36°14.043' N	115°01.018' W	⊕
3R	10120 [ft] 3084 [m]	11120 [ft] 3398 [m]	11120 [ft] 3398 [m]	10120 [ft] 3084 [m]	36°13.029' N	115°02.038' W	

ATIS	NELLIS GROUND	NELLIS TOWER	NELLIS CONTROL	TACAN	ILS RWY 21L	NELLIS EAST	NELLIS WEST
270.100 MHz	275.800 121.800	327.000 132.55	317.525	LSV 12X	109.10 Mhz	384.400	385.000

DREAM FOUR DEPARTURE DREAM4 | VALID 2014

NELLIS AFB (KLSV)
LAS VEGAS, NEVADA

ATIS
270.100
NELLIS GROUND
275.800
NELLIS TOWER
327.000
NELLIS CONTROL
317.525
NELLIS DEP/APP EAST
384.400
BLACKJACK
377.800

DREAM
N3710.34
W11459.53

MINTT
LAS 351/38
17,000

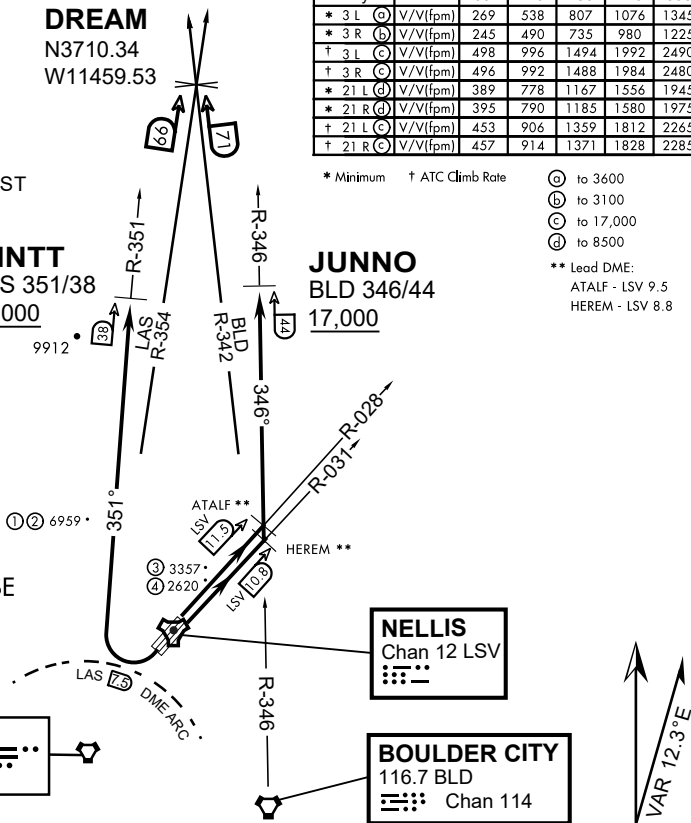
JUNNO
BLD 346/44
17,000

Rwy	Knots	60	120	180	240	300	360
* 3 L (A)	V/Vl(fpm)	269	538	807	1076	1345	1614
* 3 R (B)	V/Vl(fpm)	245	490	735	980	1225	1470
† 3 L (C)	V/Vl(fpm)	498	996	1494	1992	2490	2988
† 3 R (C)	V/Vl(fpm)	496	992	1488	1984	2480	2976
* 21 L (D)	V/Vl(fpm)	389	778	1167	1556	1945	2334
* 21 R (D)	V/Vl(fpm)	395	790	1185	1580	1975	2370
† 21 L (C)	V/Vl(fpm)	453	906	1359	1812	2265	2718
† 21 R (C)	V/Vl(fpm)	457	914	1371	1828	2285	2742

* Minimum † ATC Climb Rate

- (A) to 3600
 - (B) to 3100
 - (C) to 17,000
 - (D) to 8500
- ** Lead DME:
ATALF - LSV 9.5
HEREM - LSV 8.8

- ① 12.24 NM from Rwy 21R
- ② 12.40 NM from Rwy 21L
- ③ 5.67 NM from Rwy 3L
- ④ 5.85 NM from Rwy 3R



NOT FOR CIVIL USE

CAUTION: If unable to comply with restrictions advise ATC prior to departure.

LAS VEGAS
116.9 LAS
Chan 116

NELLIS
Chan 12 LSV

BOULDER CITY
116.7 BLD
Chan 114

VAR 12.3°E

DEPARTURE ROUTE DESCRIPTION

TAKE-OFF RWY 3L

- Fly runway heading to intercept the LSV TACAN R-028 then direct ATALF, intercept the BLD VORTAC R-346 then direct JUNNO, cross JUNNO at or above 17,000, then via assigned route.

TAKE-OFF RWY 3R

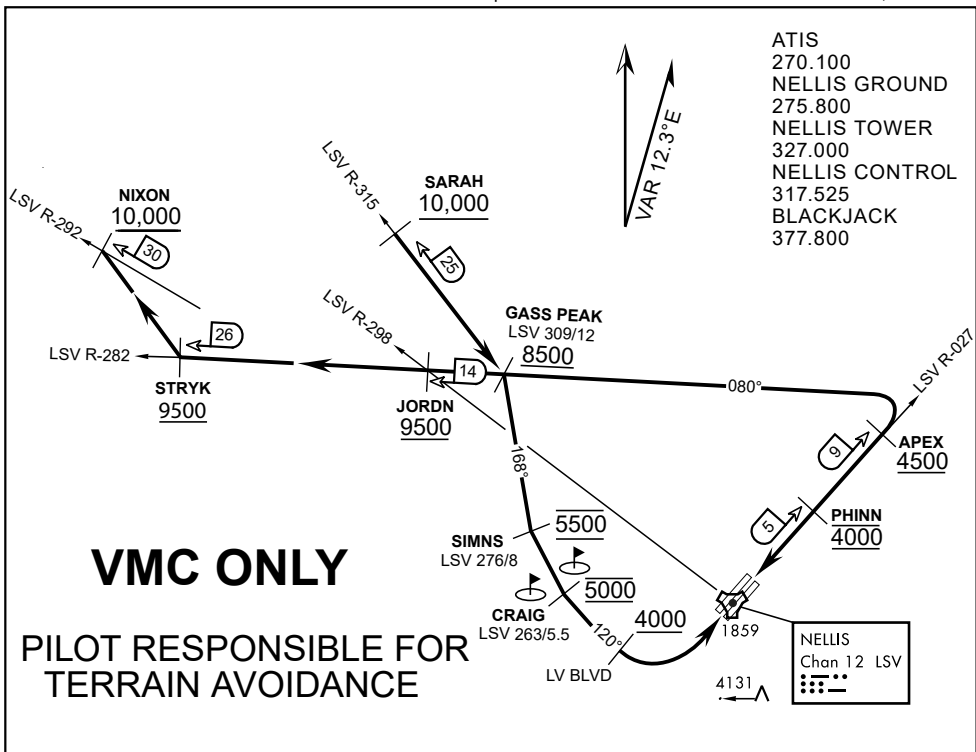
- Fly runway heading to intercept the LSV TACAN R-031 then direct HEREM, intercept the BLD VORTAC R-346 then direct JUNNO, cross JUNNO at or above 17,000, then via assigned route.

TAKE-OFF RWY 21L/R

- Turn right to intercept LAS VORTAC R-351 outbound. Remain North of LAS 7.5 DME turning Northbound. Intercept LAS R-351 between 5000 and 6000, do not proceed West of LAS R-351. Cross MINTT at or above 17,000, then via assigned route.

NOISE ABATMENT PROCEDURES: Fly acc. Nellis Noise Abatement instructions

DREAM FOUR DEPARTURE (DREAM4 • DREAM)



ATIS
270.100
NELLIS GROUND
275.800
NELLIS TOWER
327.000
NELLIS CONTROL
317.525
BLACKJACK
377.800

VMC ONLY

**PILOT RESPONSIBLE FOR
TERRAIN AVOIDANCE**

APPROACH ROUTE DESCRIPTION

APPROACH RWY 3L/R

Cross STRYK at or above 9,500' MSL, proceed direct GASS PEAK. Cross JORDN at or above 9,500' MSL, cross GASS PEAK at or above 8,500' MSL. Proceed direct SIMNS and cross at 5,500' MSL. Cross Las Vegas Blvd at or above 4,000' MSL then to 3,500' MSL for Initial. Remain within 4 DME if LSV on turn to final.

VFR STRAIGHT-IN RWY 3L/R

Depart CRAIG & descend to be at 3,000' MSL by Las Vegas Blvd. Do not descend below 3,000' MSL until within 5 DME of LSV or 4 NM of the runway on turn to final.

APPROACH RWY 21L/R

Cross STRYK at or above 9,500' MSL, proceed direct GASS PEAK. Cross JORDN at or above 9,500' MSL, cross GASS PEAK at or above 8,500' MSL. Cross APEX at or above 4,500' MSL then direct 5NM initial. Descend to cross PHINN at 4,000' MSL, Inside 5 NM descend to 3,500' MSL.

VFR STRAIGHT-IN RWY 21L/R

Cross APEX at 4,000' MSL. Descend to be at 3,000' MSL at PHINN. Descend to 3,000' MSL at LSV 027/5.

RANGE 63B EXIT

SOUTH: Via NIXON at or above 10,000' MSL, then direct STRYK.

EAST: Via SARAH at or above 10,000' MSL, then direct GASS PEAK.