

MISSION DATA CARD

| | | | | | | | | |
|-----------|---------------|-------------|------------|----------|------|-------------|------|-----|
| OPORD | | Callsign | | Mission | | Date/Time | | |
| 3203/2024 | | Edelweiss 1 | | Training | | 162000SEP24 | | |
| Task | Fam Flight | | | | | Freq | | |
| AO | NTTR | | | | | 134.5 | | |
| Departure | | | | Recovery | | | | |
| FYTTR LOW | | | | STRYK | | | | |
| # | Callsign | | Pilot | | IFF | TCN | LSR | NET |
| -1 | Edelweiss 1-1 | | Nerkub | | 1711 | 1Y | 1711 | |
| -2 | Edelweiss 1-2 | | Beathovenz | | 1712 | 64Y | 1712 | |

LOADOUT

| | | | | | | | |
|-----|-------|--|--|--|------|------------|--|
| A/A | | | | | GUN | 100% HEI-T | |
| A/G | | | | | CHF | 120 | |
| POD | | | | | FLR | 0 | |
| TKS | FT300 | | | | FUEL | 100% | |

TOLD

| | | | | | |
|------|---------|--------|-------|-------|------|
| | Takeoff | Target | Joker | Bingo | Land |
| FUEL | 9166 | | | | |

AIRBASES

| | | | | | | | | |
|-----|------------|-----|--------|-------|-------|-----|------|-------|
| | Name | TCN | ATIS | GND | TWR | RWY | Elev | ILS |
| Dep | Nellis AFB | 12X | 270.1 | 275.8 | 327.0 | 21L | 1850 | 109.1 |
| Arr | Nellis AFB | 12X | 270.1 | 275.8 | 327.0 | 21L | 1850 | 109.1 |
| Div | Creech AFB | 87X | 290.45 | 275.8 | 360.6 | | | |

FLIGHTPLAN

| # | Name | Navaid/Coords/DME | ALT | TOT |
|----|-------------|------------------------------|-------|-----|
| 1 | FLEX | N36 18 37.200 W115 02 21.600 | 4000 | |
| 2 | FYTTR | N36 21 26.400 W115 41 28.200 | 15000 | |
| 3 | FLUSH | N36 50 48 W116 20 16.200 | 15000 | |
| 4 | GARTH | N37 17 57.600 W116 21 15.600 | 15000 | |
| 5 | Belted Peak | N37 34 W116 04 30 | 15000 | |
| 6 | Mt Irish | N37 38 30 W115 24 | 15000 | |
| 7 | 7 | N37 27 44.310 W115 35 10.770 | 15000 | |
| 8 | 8 | N37 05 50.009 W115 35 27.206 | 15000 | |
| 9 | 9 | N37 05 34.714 W115 59 49.983 | 15000 | |
| 10 | 10 | N37 27 44.310 W116 00 00.940 | 15000 | |
| 11 | TROUTT | N37 16 60 W115 07 03 | 15000 | |
| 12 | SARAH | N36 36 27 W115 18 01.800 | 15000 | |
| 13 | GASS PEAK | N36 24 08.400 W115 10 39.600 | 8500 | |
| 14 | SIMNS | N36 17 20.400 W115 10 45 | 5500 | |
| 15 | CRAIG | N36 15 15 W115 08 16.200 | 5000 | |
| 16 | Nellis AFB | N36 13 32 W115 02 37 | 1800 | |

OTHER FLIGHTS

| Callsign | Mission | Airframe | Freq | TCN | Grpld | Laser |
|-------------|----------------|------------|-------------------|------|-------|-------|
| Edelweiss 3 | Training | 4x F/A-18C | 264.35 | 1/64 | | 173X |
| AO | RANGE 64C | Task | TRAINING | | | |
| Edelweiss 5 | Training | 2x F/A-18C | 264.55 | 1/64 | | 175X |
| AO | BTY | Task | TRAINING | | | |
| Raptor 2 | Training | 4x F-16C | 134.0 | 1/64 | | 162X |
| AO | R66 | Task | A2G - Gun Pattern | | | |
| Joker* 1 | Training | 1x CH-47F | 125.1 | 1/64 | | 170X |
| AO | | Task | | | | |
| Edelweiss 4 | Training | 1x F/A-18C | 264.45 | 1/64 | | 174X |
| AO | | Task | | | | |
| Nazgul 6 | Training | 4x F-15E | 262.45 | 1/64 | | 116X |
| AO | | Task | | | | |
| Rattler 1 | Training | 4x AH-64D | 133.5 | 1/64 | | 125X |
| AO | Nellis, winner | Task | basic pattern | | | |
| T-Rex 2 | Training | 4x A-10C | 132.25 | 1/64 | 25 | 165X |
| AO | R62 | Task | JDAm | | | |

RADIO CHANNELS

| # | Freq | Name |
|----|---------|--------------------------------|
| 1 | | Flight/Squadron specific |
| 2 | 289.4 | Nellis Clearance Delivery |
| 3 | 275.8 | Nellis Ground |
| 4 | 327.0 | Nellis Tower |
| 5 | 385.4 | Nellis Approach/Departure West |
| 6 | 273.55 | Nellis Approach/Departure East |
| 7 | 317.525 | Nellis Control -- Sally |
| 8 | 254.4 | Nellis Control-- Lee |
| 9 | 305.6 | SOF Bullseye |
| 10 | 343.725 | EMERGENCY SINGLE FRQ |
| 11 | 270.1 | Nellis ATIS |
| 12 | 360.625 | Creech AFB Tower |
| 13 | 250.1 | HAVE QUICK 13 |
| 14 | 251.1 | HAVE QUICK 14 |
| 15 | 252.1 | HAVE QUICK 15 |
| 16 | 377.8 | Blackjack |
| 17 | 265.0 | KC-135 AR-641A |
| 18 | 360.8 | KC-135MPRS AR-635 |
| 19 | 319.8 | KC-135MPRS AR-625 |
| 20 | 300.05 | KC-135 AR-231V |

RAMROD

| | | | | | | | | | |
|---|---|---|---|---|---|---|---|---|---|
| 0 | 1 | 2 | 3 | 4 | 5 | 6 | 7 | 8 | 9 |
| C | H | I | V | A | L | R | O | U | S |

KTC 1400 C

| | 0 | 1 | 2 | 3 | 4 | 5 | 6 | 7 | 8 | 9 |
|---|------|-----|-----|----|----|-----|----|----|----|----|
| A | FEMH | OTL | ABN | CG | WD | JXR | QI | VY | KP | SU |
| B | QABN | IPY | FMU | KR | XO | HEV | CD | TG | LS | JW |
| C | NSQX | YLD | TFW | UH | EG | BRO | PM | CV | AJ | IK |
| D | VEML | UBK | SQH | GP | CR | XWI | FN | YJ | AT | OD |
| E | WRYA | IBM | SCD | GF | JH | OPV | TL | NE | UX | QK |
| F | YDRH | PNI | CJF | SE | QT | BVX | OU | WM | AL | GK |
| G | UCDF | TVJ | OQK | RI | GW | YLS | PB | MN | XA | HE |
| H | WOMY | UIJ | FSA | DH | QP | VLR | BT | KX | EG | CN |
| I | GTML | BEN | SFW | RC | AJ | VDX | HQ | UP | OI | YK |
| J | JLHI | RGK | SBF | OC | ED | XNM | PY | WV | QT | UA |
| K | KEUD | VAH | SLF | WP | XC | TNB | RG | IM | YQ | JO |
| L | QTAM | VUN | HRX | SB | LD | FJK | WE | PI | CO | YG |
| M | TWAE | UOC | GJV | LR | QX | PFN | BI | KM | DY | SH |
| N | CNTV | FJY | OHR | GD | WQ | KUE | LM | PX | IB | SA |
| O | KSQP | EDA | VFH | YR | CI | WBX | NO | LG | MJ | TU |
| P | NHVD | QGP | WFE | OB | JU | XLT | SA | MR | IK | CY |
| Q | STYJ | CWE | NUX | BM | VK | PRL | FH | AI | GD | QO |
| R | KICH | FSU | EPR | AD | XO | TBQ | GJ | NM | WY | LV |
| S | WCUG | POY | VTE | JH | SK | IMA | XD | NR | BL | QF |
| T | EOCW | JSY | UXT | BV | RN | MHK | IG | AD | FL | QP |
| U | VRQY | TGH | XNJ | OC | ML | SAD | UF | WP | KE | IB |
| V | EMBL | XND | VWP | AT | KS | QJF | RC | OY | IG | UH |
| W | DTMI | HOP | QWX | RU | LS | BAN | EG | JF | VK | CY |
| X | MWVA | JYX | UPT | BQ | IS | NRE | CF | HD | GK | OL |
| Y | SGDU | PFA | CQM | OL | YR | VTJ | IX | HN | KE | BW |

NAVAIDS

| Id | Name | Channel | Position | Elevation |
|-----------|---------------|----------------|--------------------|------------------|
| BCE | Bryce Canyon | 75 | N3741.35 W11218.23 | 9040 |
| BIH | Bishop | 33 | N3722.62 W11821.99 | 4114 |
| BLD | Boulder | 114 | N3559.75 W11451.82 | 3650 |
| BTY | Beatty | 94 | N3648.54 W11644.86 | 2925 |
| CDC | Cedar City | 120 | N3747.24 W11304.90 | 5463 |
| DAG | Daggett | 79 | N3457.75 W11634.69 | 1760 |
| EED | Needles | 99 | N3445.96 W11428.43 | 650 |
| GFS | Goffs | 91 | N3507.87 W11510.59 | 4019 |
| GRL | Groom Lake | 18 | N3713.91 W11548.16 | 4475 |
| HEC | Hector | 74 | N3447.83 W11627.78 | 1854 |
| ILC | Wilson Creek | 110 | N3815.02 W11423.65 | 9318 |
| INS | Creech AFB | 87 | N3635.20 W11540.12 | 3101 |
| LAS | McCarran Intl | 116 | N3604.78 W11509.59 | 2142 |
| LSV | Nellis | 12 | N3614.68 W11501.50 | 1864 |
| MLF | Milford | 58 | N3821.62 W11300.79 | 4977 |
| MMM | Mormon Mesa | 90 | N3646.16 W11416.65 | 2120 |
| MVA | Mina | 98 | N3833.92 W11801.97 | 7860 |
| OAL | Coale Dale | 124 | N3800.20 W11746.23 | 4800 |
| PGS | Peach Springs | 57 | N3537.48 W11332.67 | 4754 |
| TPH | Tonopah Muni | 119 | N3801.84 W11702.01 | 5330 |
| TQQ | Silverbow | 77 | N3748.00 W11647.00 | 5500 |
| UTI | St George | 23 | N3705.29 W11335.53 | 2871 |



RWY 3L-21R
 PCN 46 R/C/W/T
 RWY 3R-21L
 PCN 51 R/C/W/T
 2017

| PAR | RWY | CAT | MINIMA | ARP | ELEV | Scale |
|-----|-----|---------|------------------------------------|---------------------------------|----------------------|----------------------------------------------------------------|
| | 21L | A B D E | 2057 - 0.8 200 (200-0.8/1.6) GS 3° | 36° 14.060° N 115° 01.058° W | 1857 [ft] 566 [m] | 0 300 600 900 1200 1500 [m] 0 1000 2000 3000 4000 5000 [ft] |
| | 3R | A B D E | 2057 - 0.8 200 (200-0.8/1.6) GS 3° | | | |
| | 21R | A C D E | 2257 - 1.2 350 (350-1.2/1.6) | | | |
| | 3L | A C D E | 2257 - 1.2 350 (350-1.2/1.6) | | | |

| RWY | TORA | TODA | ASDA | LDA | PSN | THR | ALS |
|-----|---------------------|---------------------|---------------------|---------------------|--------------|---------------|-----|
| 21L | 10051 [ft] 3063 [m] | 11051 [ft] 3368 [m] | 11051 [ft] 3368 [m] | 10051 [ft] 3063 [m] | 36°14.043' N | 115°01.018' W | ⊕ |
| 3R | 10120 [ft] 3084 [m] | 11120 [ft] 3398 [m] | 11120 [ft] 3398 [m] | 10120 [ft] 3084 [m] | 36°13.029' N | 115°02.038' W | |
| | | | | | | | |
| | | | | | | | |

| ATIS | NELLIS GROUND | NELLIS TOWER | NELLIS CONTROL | TACAN | ILS RWY 21L | NELLIS EAST | NELLIS WEST |
|-------------|-------------------|------------------|----------------|---------|-------------|-------------|-------------|
| 270.100 MHz | 275.800 121.800 | 327.000 132.55 | 317.525 | LSV 12X | 109.10 Mhz | 384.400 | 385.000 |

FYTTR LOW VISUAL OPERATION CHART | VALID 2014

ATIS
270.100
NELLIS GROUND
275.800
NELLIS TOWER
327.000
NELLIS CONTROL
317.525
NELLIS DEP/APP EAST
384.400
BLACKJACK
377.800

CAUTION: If unable to comply with restrictions advise ATC prior to departure.



VMC ONLY

PILOT RESPONSIBLE FOR TERRAIN AVOIDANCE

① 4 NM from RWY 3L/R

BEATTY
Chan 94 BTY

RANGE 64/65
RANGE 63

TUCKY

R-2508

LSV R-269
285°

FYTTR
N3621.44
W11541.47

BTY R-105
20

DME 15 ARC
5000
270°

FLEX
LSV 337/5

2086 M

①

3000

NELLIS
Chan 12 LSV

1859

4131

←R-255
6000
5000

300°

320°

7233

v.1486502 NITTR NAV CHART



DEPARTURE ROUTE DESCRIPTION

TAKEOFF RWY 3L/R:

- Remain below 3,000' MSL until north of Race Track and turned westbound.
- Turn left within 4NM of Nellis direct FLEX. Fly north of FLEX and turn left heading 270°.
- Intercept LSV 15 DME ARC at or below 5,000' MSL.
- ARC south, intercept LSV R-269 outbound. Maintain VFR.

TAKEOFF RWY 21L/21R:

- Follow Noise Abatement Procedures.
- Fly runway heading until past Golf Course, turn right heading 300°.
- Cross LSV R-255 between 5,000' and 6,000' , intercept and proceed outbound on the LSV R-269.Recommend climb to 8,500' MSL or appropriate VFR altitude for overflight of North Las Vegas Training Area. Fly routing for appr. mission/transition.

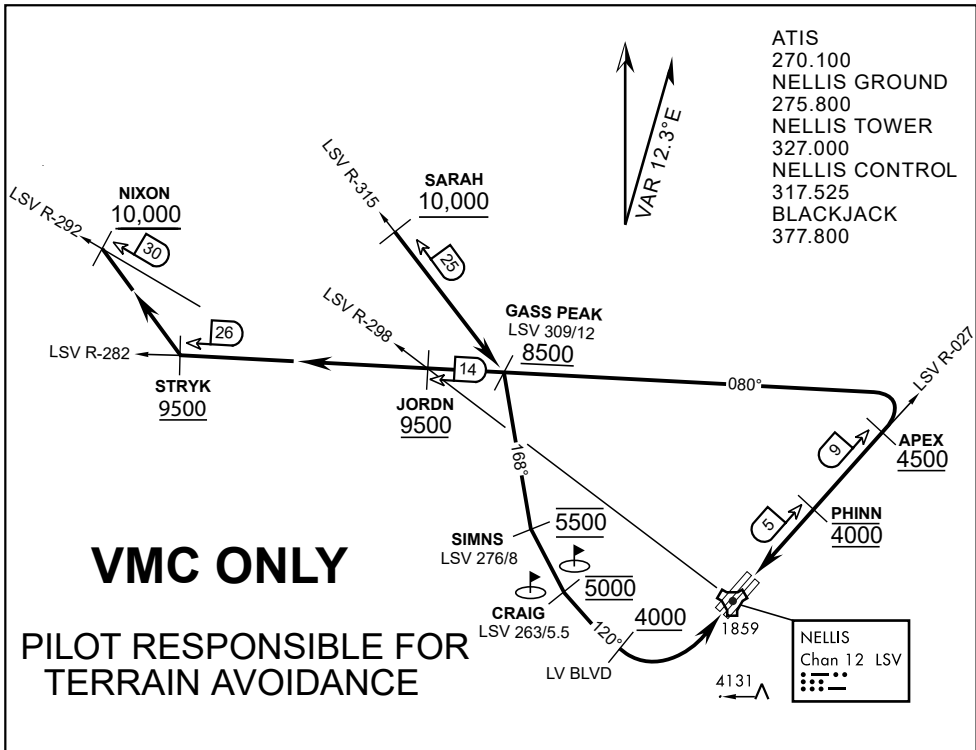
TRANSITIONS:

R-4806: Turn right at the LSV 269/20 direct to assigned ranges.

BEATTY: Turn right at FYTTR direct BTY via the BTY R-105

R-2508: Turn right at the FYTTR, intercept the BTY 105/30, direct TUCKY, then direct R-2508

FYTTR DEPARTURE AND TRANSITIONS (FYTTR LOW)



APPROACH ROUTE DESCRIPTION

APPROACH RWY 3L/R

Cross STRYK at or above 9,500' MSL, proceed direct GASS PEAK. Cross JORDN at or above 9,500' MSL, cross GASS PEAK at or above 8,500' MSL. Proceed direct SIMNS and cross at 5,500' MSL. Cross Las Vegas Blvd at or above 4,000' MSL then to 3,500' MSL for Initial. Remain within 4 DME if LSV on turn to final.

VFR STRAIGHT-IN RWY 3L/R

Depart CRAIG & descend to be at 3,000' MSL by Las Vegas Blvd. Do not descend below 3,000' MSL until within 5 DME of LSV or 4 NM of the runway on turn to final.

APPROACH RWY 21L/R

Cross STRYK at or above 9,500' MSL, proceed direct GASS PEAK. Cross JORDN at or above 9,500' MSL, cross GASS PEAK at or above 8,500' MSL. Cross APEX at or above 4,500' MSL then direct 5NM initial. Descend to cross PHINN at 4,000' MSL, Inside 5 NM descend to 3,500' MSL.

VFR STRAIGHT-IN RWY 21L/R

Cross APEX at 4,000' MSL. Descend to be at 3,000' MSL at PHINN. Descend to 3,000' MSL at LSV 027/5.

RANGE 63B EXIT

SOUTH: Via NIXON at or above 10,000' MSL, then direct STRYK.
EAST: Via SARAH at or above 10,000' MSL, then direct GASS PEAK.



INDIAN SPRINGS, NEVADA

| | | | |
|----------------------|-------------------|----------------------|--------------|
| TACAN INS Chan 87 | APCH CRS 065° | Rwy ldg TDZE 3133 | 9002 3113 |
| | Arpt Elev 3113 | | |

INDIAN SPRINGS AF AUX (KINS)

▽ * MISSED APPROACH: Straight ahead to INS TACAN, intercept INS R-outbound, cross 17 DME at or above 9500, then direkt KSV TACAN 114

NELLIS CON

CREECH AFB TOWER
118.30 **U**60.60

GND CON

NOT FOR CIVIL USE

FOR USE UNDER BASIC VFR WEATHER MINIMUMS ONLY

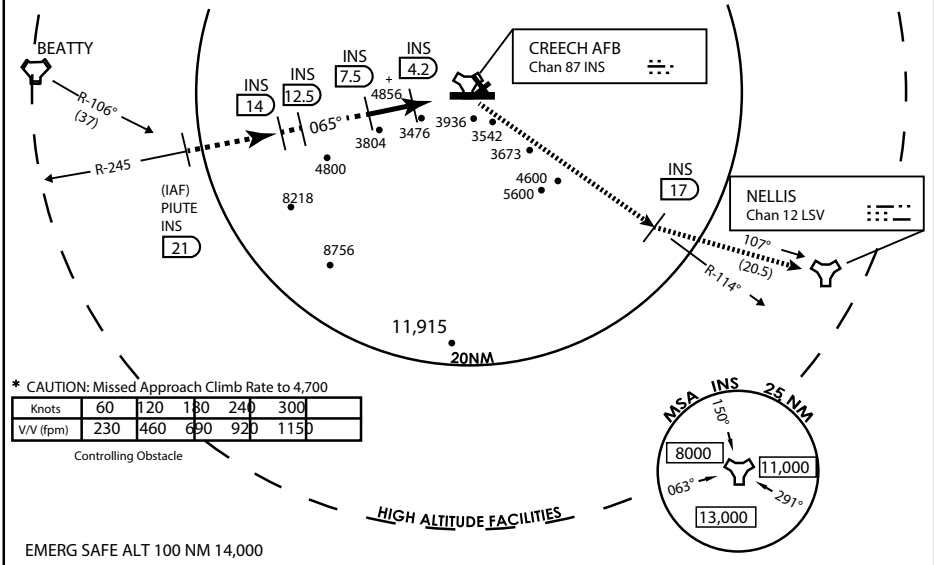
PILOT IS RESPONSIBLE FOR TERRAIN/OBSTACLE AVOIDANCE AND APPROPRIATE VFR CLOUD CLEARANCE FOR ALL

CAUTION: Descent gradients are greater than allowed under standard TERPS criteria and inbound course does not meet straight-in criteria

CAUTION: Final approach course crosses Runway centerline at MIDFIELD. Maneuvering left of course required prior to landing. Do not Maneuver farther north than the INS R- 258

Modified by vJaBoG 66 for use with DCS
NOT FOR REAL LIFE NAVIGATION

Modified by vJaBoG 66 for use with DCS
NOT FOR REAL LIFE NAVIGATION



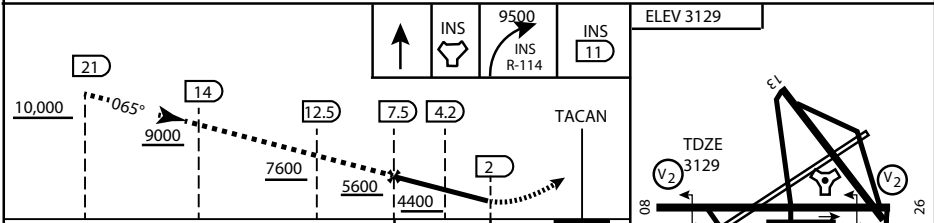
* CAUTION: Missed Approach Climb Rate to 4,700

| | | | | | |
|-----------|-----|-----|-----|-----|------|
| Knots | 60 | 120 | 180 | 240 | 300 |
| V/V (fpm) | 230 | 460 | 690 | 920 | 1150 |

Controlling Obstacle

HIGH ALTITUDE FACILITIES

EMERG SAFE ALT 100 NM 14,000



| | | | | | |
|----------|----------------|-----------------|-------------------------------|-----------------------|-------------------------------|
| CATEGORY | A | B | C | D | E |
| S-8 | 3760-1 1/2 | 627 (700-1 1/2) | 3760-1 3/4 627 (700-1 3/4) | 3760-2 627 (700-2) | 3760-2 1/4 627 (700-2 1/4) |
| CIRCLING | NOT AUTHORIZED | | | | |

MIRL Rwy 8-26

CITY OF INDIAN, NEVADA

INDIAN SPRINGS AF AUX (KINS)

(FOR DAY VFR USE ONLY)



AIRPORT DIAGRAM

476 VFG

CREECH AFB (KINS)
INDIAN SPRINGS, NEVADA

ATIS
 122.5
 CREECH TOWER
 118.4 360.7 38.65
 GND CON
 118.3 275.8
 CLNC DEL

115°42'W

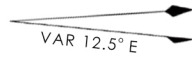
FIELD
 ELEV
 3127

80

972 X 150

HOT CARGO PAD

BAK-12


 VAR 12.5° E

WEST EOR

115°41'W

476 VFG JAN 2019

CONTROL TOWER
 BASE OPS

RPA LOLA WEST

RPA LOLA EAST

LOLA / HUNG ORDNANCE

RUNWAY
 31/13
 MQ/RQ-1
 ONLY

9002 X 150

258.5°

860 X 100

313.8°

4064 X 100

199 X 100

13

ELEV 3127

BAK-12

ELEV 3127

EAST EOR

115°40'W

1030 X 150

26

476 VFG JAN 2019

AIRPORT DIAGRAM

INDIAN SPRINGS, NEVADA
CREECH AFB (KINS)