

MISSION DATA CARD

OPORD		Callsign		Mission		Date/Time		
3191/2024		Tiger 1		Training		121634SEP24		
Task	JDAM					Freq		
AO	R62					261.15		
Departure				Recovery				
DREAM FOUR				HI-TACAN Y RWY 21L				
#	Callsign		Pilot		IFF	TCN	LSR	NET
-1	Tiger 1-1		Kosmoss		1011	1Y	1551	

LOADOUT

A/A	2xA9X, A120C				GUN	100% HEI-T	
A/G	4xG31B				CHF	80	
POD	TGP				FLR	40	
TKS	FPU-8A				FUEL	100%	

TOLD

	Takeoff	Target	Joker	Bingo	Land
FUEL	13047		4500		

AIRBASES

	Name	TCN	ATIS	GND	TWR	RWY	Elev	ILS
Dep	Nellis AFB	12X	270.1	275.8	327.0	21L	1850	109.1
Arr	Nellis AFB	12X	270.1	275.8	327.0	21L	1850	109.1
Div	Creech AFB	87X	290.45	275.8	360.6			

FLIGHTPLAN

#	Name	Navaid/Coords/DME	ALT	TOT
1	MINTT	LSV 339/28 LAS 351/38 (N36 42.740 W115 06.290)	17000	
2	JUNNO	BLD 346/44 (N36 43.800 W114 52.770)	17000	
3	DREAM	LAS 354/66 BLD 342/71 (N37 10.340 W114 59.530)	22000	
4	ALAMO B	N36 55.499 W115 12.549	22000	
5	Alamo S Point	LSV 325/38 (N36 50 W115 20.200)	22000	
6	T62.12	N36 47.293 W115 26.316	3505	
7	T62.13	N36 47.272 W115 26.430	3496	
8	ALAMO C	N36 47.398 W115 12.955	22000	
9	DUDBE	N36 21.849 W115 20.581	10000	
10	SECRT	N36 20.166 W115 16.087	10000	
11	HOKUM	N36 27.570 W114 59.262	8800	
12	HULPU	N36 24.346 W114 50.729	5300	
13	JENAR	N36 19.887 W114 55.708	4400	
14	JOGEV	N36 17.506 W114 58.360	3200	
15	WILIE	N36 16.390 W114 59.602	2540	
16	KITCH	N36 15.200 W115 00.926	2540	

COMMS

Radio	Usage
1	11(ATIS), 3(NG), 4(NT), 16(BJ), 4(NT), 3(NG)
2	261.15
3	Mids A 22
4	Mids B 44

NOTES

DMPID	Description	Elevation	DD°MM'SS" N	DDD°MM'SS" W
1	Bunker	3500	36°47'18"	115°26'21"
2	Bunker	3502	36°47'18"	115°26'20"
3	Bunker	3502	36°47'18"	115°26'19"
4	Bunker	3503	36°47'19"	115°26'18"
5	Bunker	3500	36°47'17"	115°26'21"
6	Bunker	3502	36°47'17"	115°26'20"
7	Bunker	3505	36°47'17"	115°26'19"
8	Bunker	3504	36°47'17"	115°26'18"
9	Bunker	3501	36°47'16"	115°26'20"
10	Bunker	3503	36°47'16"	115°26'20"
11	Bunker	3509	36°47'16"	115°26'19"
12	Bunker	3508	36°47'17"	115°26'18"

OTHER FLIGHTS

Callsign	Mission	Airframe	Freq	TCN	GrpId	Laser
Raptor 1	Training	4x F-16C	134.0	1/64		162X
AO		Task				

RADIO CHANNELS

#	Freq	Name
1		Flight/Squadron specific
2	289.4	Nellis Clearance Delivery
3	275.8	Nellis Ground
4	327.0	Nellis Tower
5	385.4	Nellis Approach/Departure West
6	273.55	Nellis Approach/Departure East
7	317.525	Nellis Control -- Sally
8	254.4	Nellis Control-- Lee
9	305.6	SOF Bullseye
10	343.725	EMERGENCY SINGLE FRQ
11	270.1	Nellis ATIS
12	360.625	Creech AFB Tower
13	250.1	HAVE QUICK 13
14	251.1	HAVE QUICK 14
15	252.1	HAVE QUICK 15
16	377.8	Blackjack
17	265.0	KC-135 AR-641A
18	360.8	KC-135MPRS AR-635
19	319.8	KC-135MPRS AR-625
20	300.05	KC-135 AR-231V

RAMROD

0	1	2	3	4	5	6	7	8	9
J	O	C	U	L	A	R	I	T	Y

KTC 1400 C

	0	1	2	3	4	5	6	7	8	9
A	WEBX	KHN	ROV	SI	FY	LUJ	CM	DQ	TG	PA
B	SCKV	JGE	YQW	AU	BH	FLM	XI	OD	RN	PT
C	AFNJ	UKT	XPE	DL	YH	SWO	BG	QC	VM	IR
D	XUNA	JVL	WPD	OY	FC	RGS	KQ	HM	IB	ET
E	YLAF	UDH	WIV	ET	SQ	MOK	CR	JG	XB	PN
F	FQHY	JND	CKW	AT	XE	RBL	UI	GV	PS	OM
G	NDBH	ISM	LVX	EC	JO	PUF	QR	KG	YA	WT
H	CPTW	SUH	DGV	FN	XL	OQB	EM	KY	AJ	IR
I	YHEK	VPJ	ASG	DU	LC	WNR	BT	OI	XF	MQ
J	FEHT	QOD	CKM	YI	VA	XWS	LB	RN	UP	JG
K	VXAB	POL	RFJ	NI	KM	DSC	QY	UH	GW	ET
L	KTRD	GBC	XWA	UE	VF	YQL	IM	SO	JH	PN
M	VGEN	JCP	OHY	TW	QU	DAL	MF	SR	KB	XI
N	BWPF	THS	RNI	YK	QA	UOC	JL	MV	XD	GE
O	WOLE	AFG	XNC	IQ	DV	PBH	KR	UY	JS	MT
P	NCAW	VPB	GSF	YJ	MT	RDI	KE	XU	QL	OH
Q	SBCJ	LMF	KQY	OA	UX	HGP	RT	VW	DE	IN
R	FVHW	MKU	ISN	DJ	LX	EOP	AG	QB	YT	CR
S	PHOG	QDM	UIL	KY	NJ	WEA	FB	CT	SV	RX
T	KXLE	BVM	YPC	FH	SU	OJA	TG	RI	QN	DW
U	PWDE	QGA	JRM	TI	NS	HKF	OU	XC	VY	BL
V	HQGF	PTS	OIL	UE	JN	BYV	AX	MC	KR	DW
W	JVOU	RGL	EBD	FI	WS	ATX	CY	HK	PN	MQ
X	SGUQ	NIJ	CAH	VF	PW	RDL	MB	KX	YO	ET
Y	AVWX	GOH	QUY	EI	KD	STM	PR	LN	CJ	FB

NAVAIDS

Id	Name	Channel	Position	Elevation
BCE	Bryce Canyon	75	N3741.35 W11218.23	9040
BIH	Bishop	33	N3722.62 W11821.99	4114
BLD	Boulder	114	N3559.75 W11451.82	3650
BTY	Beatty	94	N3648.54 W11644.86	2925
CDC	Cedar City	120	N3747.24 W11304.90	5463
DAG	Daggett	79	N3457.75 W11634.69	1760
EED	Needles	99	N3445.96 W11428.43	650
GFS	Goffs	91	N3507.87 W11510.59	4019
GRL	Groom Lake	18	N3713.91 W11548.16	4475
HEC	Hector	74	N3447.83 W11627.78	1854
ILC	Wilson Creek	110	N3815.02 W11423.65	9318
INS	Creech AFB	87	N3635.20 W11540.12	3101
LAS	McCarran Intl	116	N3604.78 W11509.59	2142
LSV	Nellis	12	N3614.68 W11501.50	1864
MLF	Milford	58	N3821.62 W11300.79	4977
MMM	Mormon Mesa	90	N3646.16 W11416.65	2120
MVA	Mina	98	N3833.92 W11801.97	7860
OAL	Coale Dale	124	N3800.20 W11746.23	4800
PGS	Peach Springs	57	N3537.48 W11332.67	4754
TPH	Tonopah Muni	119	N3801.84 W11702.01	5330
TQQ	Silverbow	77	N3748.00 W11647.00	5500
UTI	St George	23	N3705.29 W11335.53	2871



RWY 3L-21R
 PCN 46 R/C/W/T
 RWY 3R-21L
 PCN 51 R/C/W/T
 2017

PAR	RWY	CAT	MINIMA	ARP	ELEV	Scale 1:35'500
	21L	A B D E	2057 - 0.8 200 (200-0.8/1.6) GS 3°	36° 14.060° N 115° 01.058° W	1857 [ft] 566 [m]	0 300 600 900 1200 1500 [m]
	3R	A B D E	2057 - 0.8 200 (200-0.8/1.6) GS 3°			0 1000 2000 3000 4000 5000 [ft]
SRA	21R	A C D E	2257 - 1.2 350 (350-1.2/1.6)			
	3L	A C D E	2257 - 1.2 350 (350-1.2/1.6)			

RWY	TORA	TODA	ASDA	LDA	PSN	THR	ALS
21L	10051 [ft] 3063 [m]	11051 [ft] 3368 [m]	11051 [ft] 3368 [m]	10051 [ft] 3063 [m]	36°14.043' N	115°01.018' W	⊕
3R	10120 [ft] 3084 [m]	11120 [ft] 3398 [m]	11120 [ft] 3398 [m]	10120 [ft] 3084 [m]	36°13.029' N	115°02.038' W	

ATIS	NELLIS GROUND	NELLIS TOWER	NELLIS CONTROL	TACAN	ILS RWY 21L	NELLIS EAST	NELLIS WEST
270.100 MHz	275.800 121.800	327.000 132.55	317.525	LSV 12X	109.10 Mhz	384.400	385.000

DREAM FOUR DEPARTURE DREAM4 | **VALID 2014**

LAS VEGAS, NEVADA

ATIS
270.100
NELLIS GROUND
275.800
NELLIS TOWER
327.000
NELLIS CONTROL
317.525
NELLIS DEP/APP EAST
384.400
BLACKJACK
377.800

DREAM

N3710.34
W11459.53

MINTT
LAS 351/38
17,000

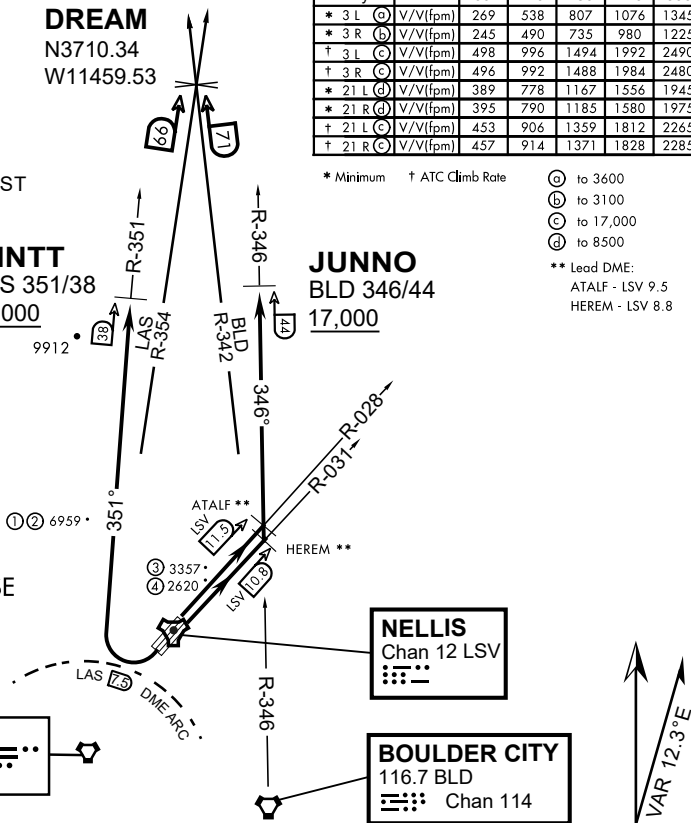
JUNNO
BLD 346/44
17,000

Rwy	Knots	60	120	180	240	300	360
* 3 L (A)	V/V(fpm)	269	538	807	1076	1345	1614
* 3 R (B)	V/V(fpm)	245	490	735	980	1225	1470
† 3 L (C)	V/V(fpm)	498	996	1494	1992	2490	2988
† 3 R (C)	V/V(fpm)	496	992	1488	1984	2480	2976
* 21 L (D)	V/V(fpm)	389	778	1167	1556	1945	2334
* 21 R (D)	V/V(fpm)	395	790	1185	1580	1975	2370
† 21 L (C)	V/V(fpm)	453	906	1359	1812	2265	2718
† 21 R (C)	V/V(fpm)	457	914	1371	1828	2285	2742

* Minimum † ATC Climb Rate

- (A) to 3600
 - (B) to 3100
 - (C) to 17,000
 - (D) to 8500
- ** Lead DME:
ATALF - LSV 9.5
HEREM - LSV 8.8

- ① 12.24 NM from Rwy 21R
- ② 12.40 NM from Rwy 21L
- ③ 5.67 NM from Rwy 3L
- ④ 5.85 NM from Rwy 3R



NOT FOR CIVIL USE

CAUTION: If unable to comply with restrictions advise ATC prior to departure.

LAS VEGAS
116.9 LAS
Chan 116

NELLIS
Chan 12 LSV

BOULDER CITY
116.7 BLD
Chan 114

VAR 12.3°E

DEPARTURE ROUTE DESCRIPTION

TAKE-OFF RWY 3L

- Fly runway heading to intercept the LSV TACAN R-028 then direct ATALF, intercept the BLD VORTAC R-346 then direct JUNNO, cross JUNNO at or above 17,000, then via assigned route.

TAKE-OFF RWY 3R

- Fly runway heading to intercept the LSV TACAN R-031 then direct HEREM, intercept the BLD VORTAC R-346 then direct JUNNO, cross JUNNO at or above 17,000, then via assigned route.

TAKE-OFF RWY 21L/R

- Turn right to intercept LAS VORTAC R-351 outbound. Remain North of LAS 7.5 DME turning Northbound. Intercept LAS R-351 between 5000 and 6000, do not proceed West of LAS R-351. Cross MINTT at or above 17,000, then via assigned route.

NOISE ABATMENT PROCEDURES: Fly acc. Nellis Noise Abatement instructions

DREAM FOUR DEPARTURE (DREAM4 • DREAM)

HI-TACAN Y RWY 21L

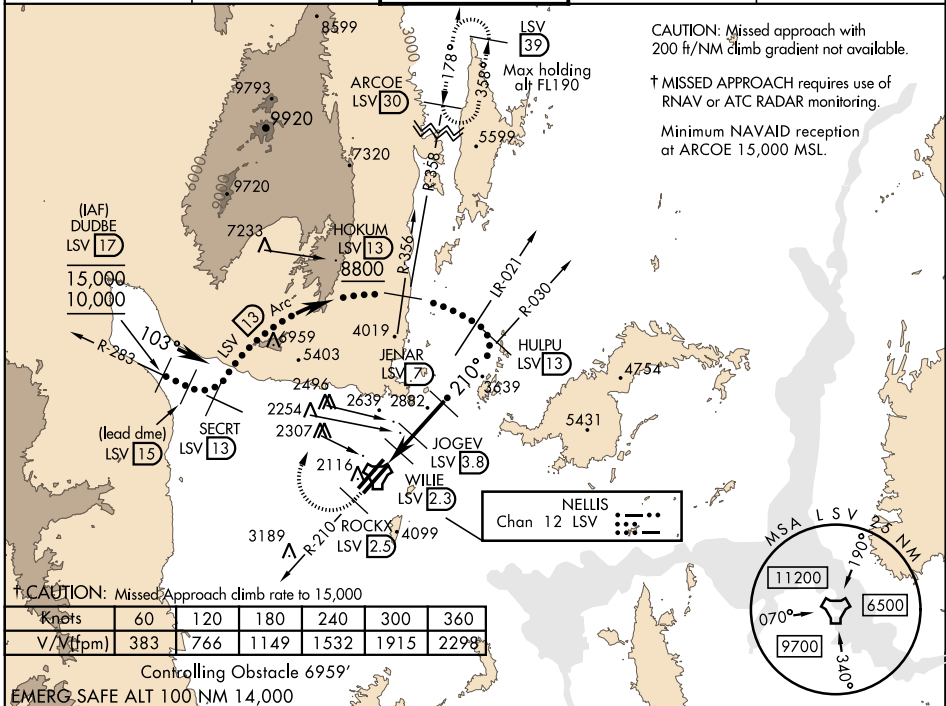
TACAN LSV Chan 12	APCH CRS 210°	Rwy ldg 21L TDZE 1865 Arprt Elev 1869	Rwy ldg 21R TDZE 1869
----------------------	------------------	---	--------------------------

JAL-227 [USAF] NELLIS AFB (KLSV)

* When ALS inop, increase CAT CDE vis to 1 3/4 miles.
 ** Circling not authorized E of Rwy 3R-21L.

† MISSED APPROACH: Climb to 15,000, intercept LSV TACAN R-210 to 2.5 DME (ROCKX), then climbing right turn heading 020° to join LSV R-358 to ARCOE and hold, continue climb in hold to 15,000. Missed approach not for civil use.

ATIS 270.1	NELLIS APP CON 124.95 273.55	NELLIS TOWER 132.55 327.0	GND CON 121.8 275.8	CLNC DEL 120.9 289.4
---------------	---------------------------------	------------------------------	------------------------	-------------------------

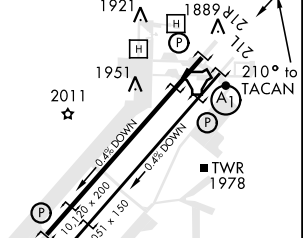
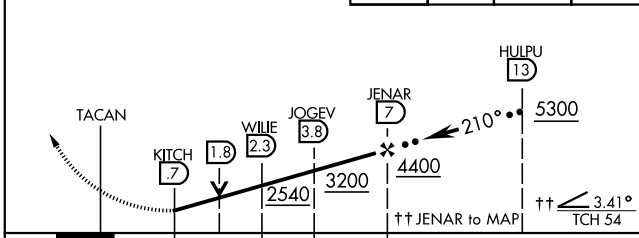


CAUTION: Missed approach with 200 ft/NM climb gradient not available.

† MISSED APPROACH requires use of RNAV or ATC RADAR monitoring.

Minimum NAVAID reception at ARCOE 15,000 MSL.

VGSJ and descent angles not coincident (VGSJ angle 3.00/TCH 54).	15,000 LSV R-210	ROCKX LSV 2.5	hdg 020°	ARCOE R-358 30	ELEV 1869	TDZE 21L 1865	TDZE 21R 1869
--	------------------	---------------	----------	----------------	-----------	---------------	---------------



CATEGORY	C	D	E
S-21L *	2460-1 1/4	595 (600-1 1/4)	
SIDESTEP 21R	2460-1	591 (600-1)	
CIRCLING **	2620-2 1/4 751 (800-2 1/4)	2840-3 971 (1000-3)	3040-3 1171 (1200-3)

HIRL all Rwy

HI-TACAN Y RWY 21L

SW-4, 05 DEC 2019 to 02 JAN 2020

SW-4, 05 DEC 2019 to 02 JAN 2020



INDIAN SPRINGS, NEVADA

TACAN INS Chan 87	APCH CRS 065°	Rwy ldg TDZE 3133	9002 3113
		Arpt Elev 3113	

INDIAN SPRINGS AF AUX (KINS)

▼ * MISSED APPROACH: Straight ahead to INS TACAN, intercept INS R-outbound, cross 17 DME at or above 9500, then direkt KSV TACAN 114

NELLIS CON

CREECH AFB TOWER
118.30 60.60

GND CON

NOT FOR CIVIL USE

FOR USE UNDER BASIC VFR
WEATHER MINIMUMS ONLY

PILOT IS RESPONSIBLE FOR TERRAIN/OBSTACLE AVOIDANCE AND APPROPRIATE VFR CLOUD CLEARANCE FOR ALL

CAUTION: Descent gradients are greater than allowed under standard TERPS criteria and inbound course does not meet straight-in criteria

CAUTION: Final approach course crosses Runway centerline at MIDFIELD. Maneuvering left of course required prior to landing. Do not Maneuver farther north than the INS R- 258

Modified by viaBog 66 for use with DCS
NOT FOR REAL LIFE NAVIGATION

Modified by viaBog 66 for use with DCS
NOT FOR REAL LIFE NAVIGATION



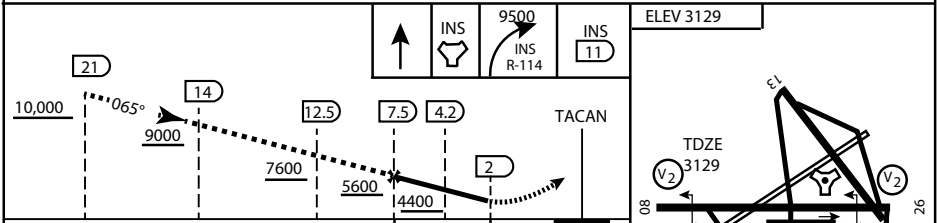
* CAUTION: Missed Approach Climb Rate to 4,700

Knots	60	120	180	240	300
V/V (fpm)	230	460	690	920	1150

Controlling Obstacle

HIGH ALTITUDE FACILITIES

EMERG SAFE ALT 100 NM 14,000



CATEGORY	A	B	C	D	E
S-8	3760-1 1/2	627 (700-1 1/2)	3760-1 3/4 627 (700-1 3/4)	3760-2 627 (700-2)	3760-2 1/4 627 (700-2 1/4)
CIRCLING	NOT AUTHORIZED				

ELEV 3129

3165

065° 6.3NM from FAF

MIRL Rwy 8-26

CITY OF INDIAN, NEVADA

INDIAN SPRINGS AF AUX (KINS)

(FOR DAY VFR USE ONLY)

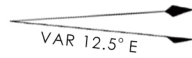


AIRPORT DIAGRAM

ATIS
 122.5
 CREECH TOWER
 118.4 360.7 38.65
 GND CON
 118.3 275.8
 CLNC DEL

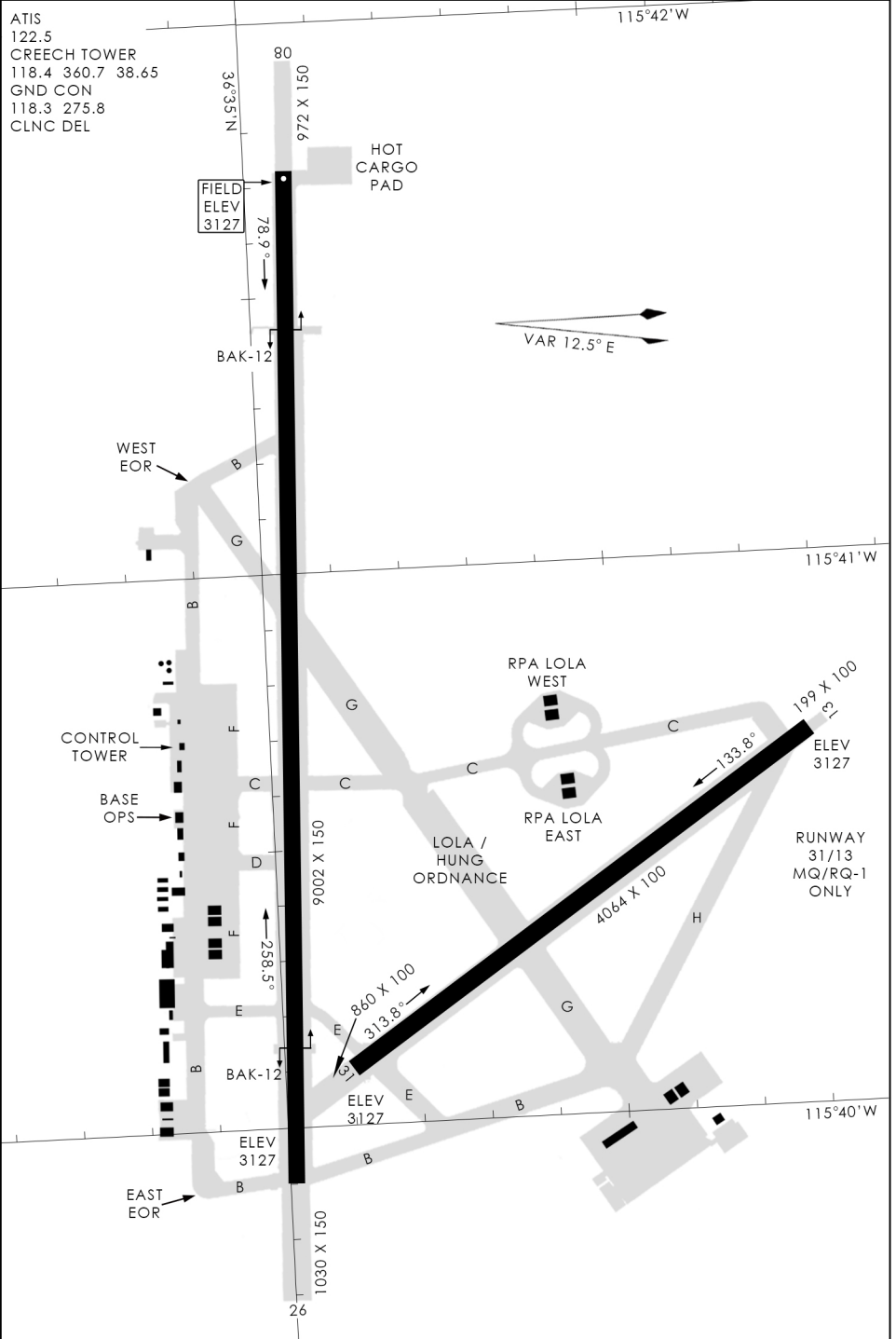
FIELD
 ELEV
 3127

HOT
CARGO
PAD



476 vFG JAN 2019

476 vFG JAN 2019



AIRPORT DIAGRAM