

**MISSION DATA CARD**

OPORD		Callsign		Mission		Date/Time	
3188/2024		Tiger 1		Training		092000SEP24	
Task	AG Bomb, AAR and Formation					Freq	
AO	Range 74.06 and 74.08					261.15	
Departure				Recovery			
FYTTR THREE				HI-TACAN Z RWY 21L			
#	Callsign	Pilot	IFF	TCN	LSR	NET	
-1	Tiger 1-1	Ghost	1011	1Y	1551	01/01	
-2	Tiger 1-2	Kosmoss	1012	64Y	1552	01/02	
-3	Tiger 1-3	Retai	1013	64X	1553	01/03	

**LOADOUT**

A/A	2xA9X, A120C	GUN	100% HEI-T
A/G	4xG322B	CHF	90
POD	TGP	FLR	30
TKS	FPU-8A	FUEL	100%

**TOLD**

	Takeoff	Target	Joker	Bingo	Land
FUEL	13047			4000	2000

**AIRBASES**

	Name	TCN	ATIS	GND	TWR	RWY	Elev	ILS
Dep	Nellis AFB	12X	270.1	275.8	327.0	21L	1850	109.1
Arr	Nellis AFB	12X	270.1	275.8	327.0	21L	1850	109.1
Div	Creech AFB	87X	290.45	275.8	360.6			

**FLIGHTPLAN**

#	Name	Navaid/Coords/DME	ALT	TOT
1	FYTTR	N36 21 26.463 W115 41 28.044	14000	
2	FLUSH	N36 50 51.188 W116 20 14.756	22000	
3	GARTH	N37 17 58.873 W116 21 19.299	24000	
4	Range 74	N37 30 10.289 W116 15 12.066	5987	
5	GARTH	N37 17 59.452 W116 21 14.094	24000	
6	AAR	N37 17 00.484 W118 01 56.453	24000	
7	Beatty	N36 51 35.020 W116 47 11.133	24000	
8	Creech	N36 35 05.567 W115 40 19.330	15000	
9	STRYK	N36 25 36.695 W115 30 42.156	10000	
10	GASS PEAK	N36 24 06.775 W115 10 46.183	8800	
11	Nellis AFB	N36 13 32 W115 02 37	3000	

**COMMS**

Radio	Usage
1	11(Atis), 3(NG), 4(NT), 16(BJ), 18(SH), 16(BJ), 4(NT), 3(NG)
2	Inhouse 261.15
3	MIDS A: 22 / B: 44
4	ARCO1 319.8 / 113Y

**SUPPORT****Tanker**

Callsign	TCN	Freq	ALT	TAS
ARCO 1	113Y	319.8	FL250	450
	Pos	AR-625: MVA 168/77 (N3717 W11802)		
SHELL 2	115Y	360.8	FL250	430
	Pos	AR-635: MLF 260/127 (N3831 W11542)		

**AWACS**

Callsign	Freq	ALT	Pos
MAGIC	377.8	FL270	N3749 W11417 - N3713 W11446

## OTHER FLIGHTS

Callsign	Mission	Airframe	Freq	TCN	Grpld	Laser
Edelweiss 6	Training	2x A-10C	134.65	1/64	40	166X
AO	Nellis-Vegas-Nellis	Task	IFR-Route			
Raptor 1	Training	4x F-16C	134.0	1/64		162X
AO		Task				
Nazgul 6	Training	4x F-15E	262.45	21/84		156X
AO	R62 A20	Task	A/G Delivery			
Monster 1	Training	4x A-10C	132.15	1/64	21	161X
AO	R64C	Task	GUN TRAINING			
Rattler 1	Training	2x AH-64D	133.5	1/64		125X
AO	LATNC	Task				
Raptor 2	Training	4x F-16C	134.0	1/64		162X
AO	blue route	Task	IFR Training Flight			
Edelweiss 5	Training	1x F/A-18C	134.65	1/64	40	166X
AO	R64	Task	A2G Delivery			
Edelweiss 4	Training	1x F/A-18C	264.45	1/64		174X
AO		Task				
Raptor 3	Training	1x F-16C	134.0	3/66		162X
AO	blue route	Task	IFR Training Flight			

**RADIO CHANNELS**

#	Freq	Name
1		Flight/Squadron specific
2	289.4	Nellis Clearance Delivery
3	275.8	Nellis Ground
4	327.0	Nellis Tower
5	385.4	Nellis Approach/Departure West
6	273.55	Nellis Approach/Departure East
7	317.525	Nellis Control -- Sally
8	254.4	Nellis Control-- Lee
9	305.6	SOF Bullseye
10	343.725	EMERGENCY SINGLE FRQ
11	270.1	Nellis ATIS
12	360.625	Creech AFB Tower
13	250.1	HAVE QUICK 13
14	251.1	HAVE QUICK 14
15	252.1	HAVE QUICK 15
16	377.8	Blackjack
17	265.0	KC-135 AR-641A
18	360.8	KC-135MPRS AR-635
19	319.8	KC-135MPRS AR-625
20	300.05	KC-135 AR-231V

**RAMROD**

0	1	2	3	4	5	6	7	8	9
C	R	E	M	A	T	I	O	N	S

**KTC 1400 C**

	0	1	2	3	4	5	6	7	8	9
A	YEBA	DQF	WGS	RJ	PH	TOI	XL	KU	CN	VM
B	LNXY	EPW	BQA	DG	IC	KOV	HF	RT	US	JM
C	GEXR	SHM	VCT	NQ	OP	UBW	ID	FA	LJ	KY
D	AQXO	BLN	EKD	IG	VM	HRF	UW	JT	PC	YS
E	QUXK	FPH	LMN	OI	ES	TRC	DW	AJ	GB	YV
F	XWCR	OJB	ANI	SG	YL	HQM	PK	UE	VF	DT
G	TMNC	JXH	FPG	DR	BK	EUO	AI	QY	WS	LV
H	MVOX	SQE	CUR	LY	NH	PGJ	WA	TB	DF	IK
I	QCJU	NYS	WGK	IP	RX	VOE	TL	HB	MF	AD
J	BVYR	HPM	EQW	FT	DI	NCJ	KG	LS	UA	XO
K	UDYH	AMK	QIX	OS	TG	CEJ	VN	FL	WR	PB
L	CNTQ	MHO	KPF	GR	JE	UYI	AD	VB	SL	XW
M	KAOU	SEF	QBR	LG	CN	TDI	WP	YJ	HV	XM
N	CIJE	NAD	TXO	FU	KQ	YPL	BS	VG	MR	WH
O	BXSP	RKO	NWF	VA	LQ	YEM	TU	HC	DJ	IG
P	TUNL	FBH	RIC	YK	GA	POQ	XW	ES	DV	JM
Q	BVUL	IWK	XNO	CR	SJ	FAE	YM	TP	GH	QD
R	JANU	BYX	QCP	KE	IF	WSR	LT	OD	MH	VG
S	WXCY	MVF	EBJ	SN	KR	HLU	PG	TO	DA	IQ
T	QYBH	LTF	MUV	JN	XR	ACK	SE	OW	PI	DG
U	QDCV	PLR	SXI	TM	YF	HWE	NG	JB	KU	OA
V	GYOV	LER	JTX	PI	SM	CDF	NA	UK	WQ	HB
W	RUYT	IQA	CVD	GH	NK	SFB	WM	LP	XO	JE
X	HCVK	DWS	YOB	QT	LX	UNF	PA	JM	GE	RI
Y	WNJK	PRO	ABH	QS	CM	IVE	FG	UT	YL	XD

**NAVAIDS**

<b>Id</b>	<b>Name</b>	<b>Channel</b>	<b>Position</b>	<b>Elevation</b>
BCE	Bryce Canyon	75	N3741.35 W11218.23	9040
BIH	Bishop	33	N3722.62 W11821.99	4114
BLD	Boulder	114	N3559.75 W11451.82	3650
BTY	Beatty	94	N3648.54 W11644.86	2925
CDC	Cedar City	120	N3747.24 W11304.90	5463
DAG	Daggett	79	N3457.75 W11634.69	1760
EED	Needles	99	N3445.96 W11428.43	650
GFS	Goffs	91	N3507.87 W11510.59	4019
GRL	Groom Lake	18	N3713.91 W11548.16	4475
HEC	Hector	74	N3447.83 W11627.78	1854
ILC	Wilson Creek	110	N3815.02 W11423.65	9318
INS	Creech AFB	87	N3635.20 W11540.12	3101
LAS	McCarran Intl	116	N3604.78 W11509.59	2142
LSV	Nellis	12	N3614.68 W11501.50	1864
MLF	Milford	58	N3821.62 W11300.79	4977
MMM	Mormon Mesa	90	N3646.16 W11416.65	2120
MVA	Mina	98	N3833.92 W11801.97	7860
OAL	Coale Dale	124	N3800.20 W11746.23	4800
PGS	Peach Springs	57	N3537.48 W11332.67	4754
TPH	Tonopah Muni	119	N3801.84 W11702.01	5330
TQQ	Silverbow	77	N3748.00 W11647.00	5500
UTI	St George	23	N3705.29 W11335.53	2871



RWY 3L-21R  
 PCN 46 R/C/W/T  
 RWY 3R-21L  
 PCN 51 R/C/W/T  
 2017

PAR	RWY	CAT	MINIMA		ARP	ELEV	Scale 1:35'500	
	21L	A B D E	2057 - 0.8 200	(200-0.8/1.6) GS 3°	36° 14.060° N 115° 01.058° W	1857 [ft] 566 [m]	0 300 600 900 1200 1500 [m]	
	3R	A B D E	2057 - 0.8 200	(200-0.8/1.6) GS 3°			0 1000 2000 3000 4000 5000 [ft]	
SRA	21R	A C D E	2257 - 1.2 350	(350-1.2/1.6)				
	3L	A C D E	2257 - 1.2 350	(350-1.2/1.6)				

RWY	TORA	TODA	ASDA	LDA	PSN	THR	ALS
21L	10051 [ft] 3063 [m]	11051 [ft] 3368 [m]	11051 [ft] 3368 [m]	10051 [ft] 3063 [m]	36°14.043' N	115°01.018' W	⊕
3R	10120 [ft] 3084 [m]	11120 [ft] 3398 [m]	11120 [ft] 3398 [m]	10120 [ft] 3084 [m]	36°13.029' N	115°02.038' W	

ATIS	NELLIS GROUND	NELLIS TOWER	NELLIS CONTROL	TACAN	ILS RWY 21L	NELLIS EAST	NELLIS WEST
270.100 MHz	275.800   121.800	327.000   132.55	317.525	LSV 12X	109.10 Mhz	384.400	385.000



**FYTTR THREE DEPARTURE** IFR CHART | VALID 2014 LAS VEGAS, NEVADA

ATIS  
270.100  
NELLIS GROUND  
275.800  
NELLIS TOWER  
327.000  
NELLIS CONTROL  
317.525  
NELLIS DEP/APP EAST  
384.400  
BLACKJACK  
377.800

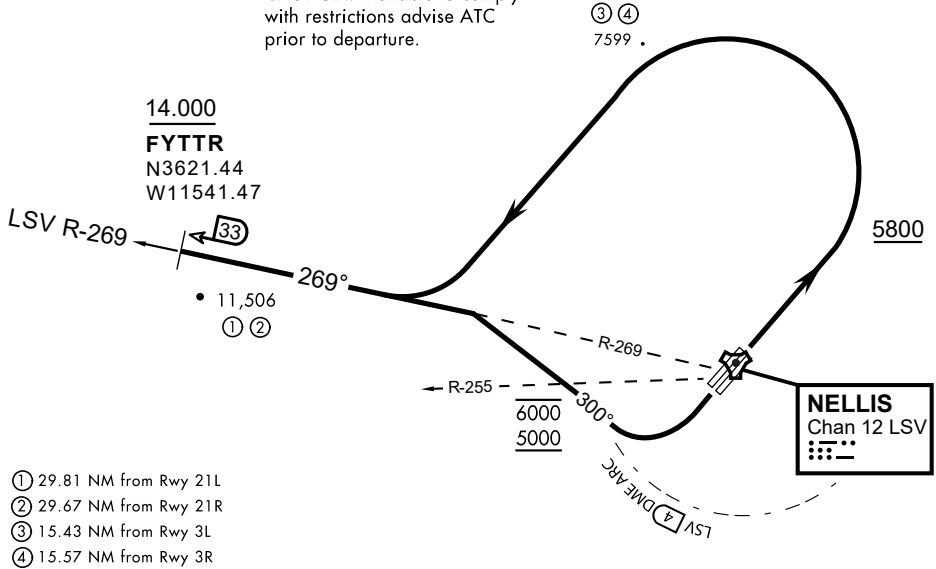


Rwy	Knots	60	120	180	240	300	360
3L (a)	V/V(fpm)	394	788	1182	1576	1970	2364
3R (a)	V/V(fpm)	392	784	1176	1568	1960	2352
21L (b)	V/V(fpm)	388	776	1164	1552	1940	2328
21R (b)	V/V(fpm)	390	780	1170	1560	1950	2340

Minimum Climb Rate

- (a) to 9300
- (b) to 13 500

CAUTION: If unable to comply with restrictions advise ATC prior to departure.



- (1) 29.81 NM from Rwy 21L
- (2) 29.67 NM from Rwy 21R
- (3) 15.43 NM from Rwy 3L
- (4) 15.57 NM from Rwy 3R

**DEPARTURE ROUTE DESCRIPTION**

TAKEOFF RWY 3L/R

- Fly runway heading until reaching 5,800'.
- Then climbing left turn to intercept LSV TACAN R-269 outbound.
- Cross FYTTR at or above 14,000' or as assigned, then via assigned route.

TAKEOFF RWY 21L/21R

- Turn right to intercept LSV TACAN R-269 outbound.
- Remain within LSV 4 DME until joining LSV R-269
- Cross R-255 between 5,000' and 6,000'.
- Cross FYTTR at or above 14,000' or as assigned, then via assigned route.

**NOISE ABATEMENT PROCEDURES:**

Fly according Nellis Noise Abatement instructions as published

# HI-TACAN Z RWY 21L

TACAN LSV Chan 12	APCH CRS 210°	Rwy ldg 21L 10,051 TDZE 1865 Arprt Elev 1869	Rwy ldg 21R 10,120 TDZE 1869
-------------------	---------------	--	------------------------------

JAL-227 [USAF]

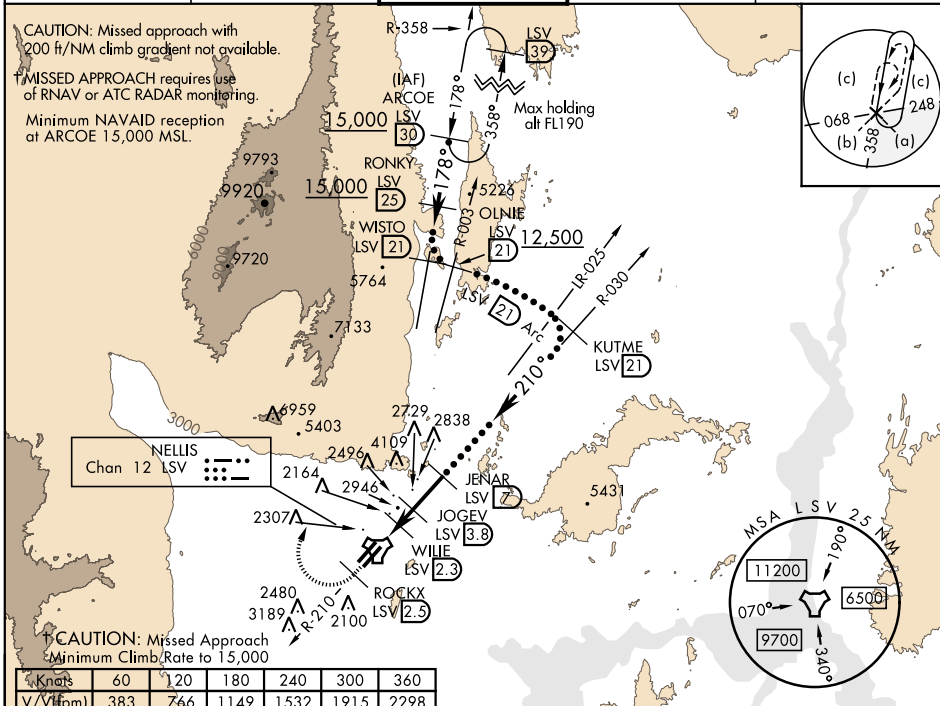
NELLIS AFB (KLSV)

▼\* When ALS inop, increase CAT CDE vis to 1 1/4 miles.  
 \*\* Circling not authorized E of Rwy 3R-21L.



† MISSED APPROACH: Climb to 15,000, intercept LSV TACAN R-210 to 2.5 DME (ROCKX), then climbing right turn heading 020° to join LSV R-358 to ARCOE and hold, continue climb in hold to 15,000. Missed approach not for civil use.

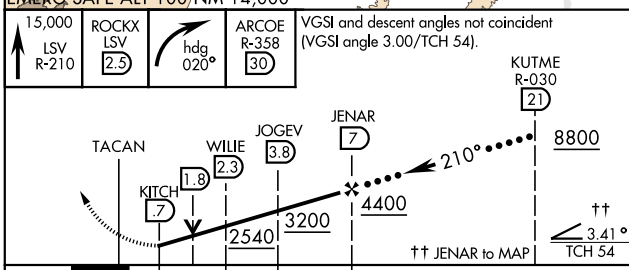
ATIS 270.1	NELLIS APP CON 124.95 273.55	NELLIS TOWER 132.55 327.0	GND CON 121.8 275.8	CLNC DEL 120.9 289.4
------------	------------------------------	---------------------------	---------------------	----------------------



SW-4, 05 DEC 2019 to 02 JAN 2020

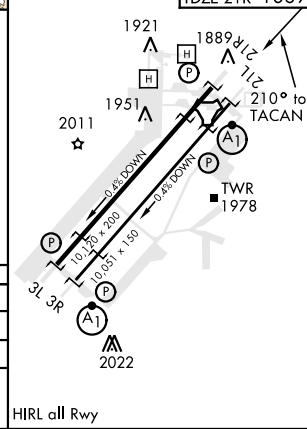
SW-4, 05 DEC 2019 to 02 JAN 2020

15,000 LSV R-210	ROCKX LSV 2.3	ARC OE R-358 30
hdg 020°		



CATEGORY	C	D	E
S-21L *	2460-1 1/4	595 (600-1 1/4)	
SIDESTEP 21R	2460-1	591 (600-1)	
CIRCLING **	2620-2 1/4 751 (800-2 1/4)	2840-3 971 (1000-3)	3040-3 1171 (1200-3)

ELEV 1869	TDZE 21L 1865
	TDZE 21R 1869



# HI-TACAN Z RWY 21L



INDIAN SPRINGS, NEVADA

TACAN INS Chan 87	APCH CRS 065°	Rwy ldg TDZE 3133	9002 3113
		Arpt Elev 3113	

INDIAN SPRINGS AF AUX (KINS)

▼ \* MISSED APPROACH: Straight ahead to INS TACAN, intercept INS R-outbound, cross 17 DME at or above 9500, then direkt KSV TACAN 114

NELLIS CON

CREECH AFB TOWER  
118.30 60.60

GND CON

NOT FOR CIVIL USE

FOR USE UNDER BASIC VFR WEATHER MINIMUMS ONLY

PILOT IS RESPONSIBLE FOR TERRAIN/OBSTACLE AVOIDANCE AND APPROPRIATE VFR CLOUD CLEARANCE FOR ALL

CAUTION: Descent gradients are greater than allowed under standard TERPS criteria and inbound course does not meet straight-in criteria

CAUTION: Final approach course crosses Runway centerline at MIDFIELD. Maneuvering left of course required prior to landing. Do not Maneuver farther north than the INS R- 258

Modified by viaBog 66 for use with DCS  
NOT FOR REAL LIFE NAVIGATION

Modified by viaBog 66 for use with DCS  
NOT FOR REAL LIFE NAVIGATION



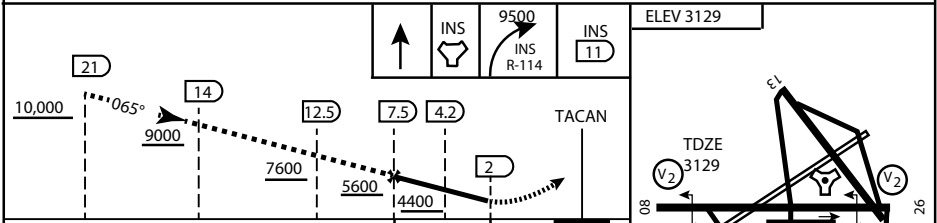
\* CAUTION: Missed Approach Climb Rate to 4,700

Knots	60	120	180	240	300
V/V (fpm)	230	460	690	920	1150

Controlling Obstacle

HIGH ALTITUDE FACILITIES

EMERG SAFE ALT 100 NM 14,000



CATEGORY	A	B	C	D	E
S-8	3760-1 1/2	627 (700-1 1/2)	3760-1 3/4 627 (700-1 3/4)	3760-2 627 (700-2)	3760-2 1/4 627 (700-2 1/4)
CIRCLING	NOT AUTHORIZED				

MIRL Rwy 8-26

CITY OF INDIAN, NEVADA

INDIAN SPRINGS AF AUX (KINS)

(FOR DAY VFR USE ONLY)



# AIRPORT DIAGRAM

476 VFG

CREECH AFB (KINS)  
INDIAN SPRINGS, NEVADA

ATIS  
 122.5  
 CREECH TOWER  
 118.4 360.7 38.65  
 GND CON  
 118.3 275.8  
 CLNC DEL

115°42'W

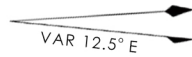
FIELD  
 ELEV  
 3127

80

972 X 150

HOT CARGO PAD

BAK-12

  
 VAR 12.5° E

WEST EOR

115°41'W

476 VFG JAN 2019

476 VFG JAN 2019

CONTROL TOWER  
 BASE OPS

RPA LOLA WEST

RPA LOLA EAST

LOLA / HUNG ORDNANCE

199 X 100  
 ELEV 3127  
 RUNWAY 31/13  
 MQ/RQ-1 ONLY

258.5°

860 X 100  
 313.8°

4064 X 100  
 133.8°

BAK-12

ELEV 3127

115°40'W

EAST EOR

1030 X 150

26

# AIRPORT DIAGRAM

INDIAN SPRINGS, NEVADA  
CREECH AFB (KINS)