

**MISSION DATA CARD**

OPORD		Callsign		Mission		Date/Time		
3186/2024		Edelweiss 5		Training		092000SEP24		
Task	A2G Delivery					Freq		
AO	R64					134.65		
Departure				Recovery				
FYTTR LOW				STRYK				
#	Callsign		Pilot		IFF	TCN	LSR	NET
-1	Edelweiss 5-1		Coach		1761	1Y	1661	40/01

**LOADOUT**

A/A	2xA9L, A120C				GUN	100% AP	
A/G	8xM82				CHF	30	
POD	TGP				FLR	90	
TKS	FPU-8A				FUEL	100%	

**TOLD**

	Takeoff	Target	Joker	Bingo	Land
FUEL	13047				

**AIRBASES**

	Name	TCN	ATIS	GND	TWR	RWY	Elev	ILS
Dep	Nellis AFB	12X	270.1	275.8	327.0	21L	1850	109.1
Arr	Nellis AFB	12X	270.1	275.8	327.0	21L	1850	109.1

**FLIGHTPLAN**

#	Name	Navaid/Coords/DME	ALT	TOT
1	FLEX	LSV 337/5 (N36 18.620 W115 02.360)	4000	
2	FYTTR	LSV 269/33 (N36 21.440 W115 41.470)	10000	
3	Creech	N36 35.208 W115 40.961	18000	
4	Range 64A	N36 55.505 W115 38.050	18000	
5	NIXON	LSV 292/30 (N36 32.010 W115 32.250)	10000	
6	STRYK	LSV 282/26 (N36 25.620 W115 30.700)	9500	
7	JORDN	N36 23.869 W115 14.590	9500	
8	GASS PEAK	LSV 309/12 (N36 24.140 W115 10.660)	8500	
9	SIMNS	LSV 276/8 (N36 17.340 W115 10.750)	5500	
10	CRAIG	LSV 263/5.5 (N36 15.250 W115 08.270)	5000	
11	Nellis		4000	
12	APEX	LSV 027/09 (N36 21.580 W114 54.340)	4500	

**SUPPORT****Tanker**

Callsign	TCN	Freq	ALT	TAS
ARCO 1	113Y	319.8	FL250	450
Pos	AR-625: MVA 168/77 (N3717 W11802)			

## OTHER FLIGHTS

Callsign	Mission	Airframe	Freq	TCN	Grpld	Laser
Edelweiss 6	Training	2x A-10C	134.65	1/64	40	166X
AO	Nellis-Vegas-Nellis	Task	IFR-Route			
Raptor 1	Training	4x F-16C	134.0	1/64		162X
AO		Task				
Nazgul 6	Training	4x F-15E	262.45	21/84		156X
AO	R62 A20	Task	A/G Delivery			
Monster 1	Training	4x A-10C	132.15	1/64	21	161X
AO	R64C	Task	GUN TRAINING			
Rattler 1	Training	2x AH-64D	133.5	1/64		125X
AO	LATNC	Task				
Raptor 2	Training	4x F-16C	134.0	1/64		162X
AO	blue route	Task	IFR Training Flight			
Edelweiss 4	Training	1x F/A-18C	264.45	1/64		174X
AO		Task				
Tiger 1	Training	4x F/A-18C	261.15	1/64	1	155X
AO	Range 74.06 and 74.08	Task	AG Bomb, AAR and Formation			
Raptor 3	Training	1x F-16C	134.0	3/66		162X
AO	blue route	Task	IFR Training Flight			

**RADIO CHANNELS**

#	Freq	Name
1		Flight/Squadron specific
2	289.4	Nellis Clearance Delivery
3	275.8	Nellis Ground
4	327.0	Nellis Tower
5	385.4	Nellis Approach/Departure West
6	273.55	Nellis Approach/Departure East
7	317.525	Nellis Control -- Sally
8	254.4	Nellis Control-- Lee
9	305.6	SOF Bullseye
10	343.725	EMERGENCY SINGLE FRQ
11	270.1	Nellis ATIS
12	360.625	Creech AFB Tower
13	250.1	HAVE QUICK 13
14	251.1	HAVE QUICK 14
15	252.1	HAVE QUICK 15
16	377.8	Blackjack
17	265.0	KC-135 AR-641A
18	360.8	KC-135MPRS AR-635
19	319.8	KC-135MPRS AR-625
20	300.05	KC-135 AR-231V

**RAMROD**

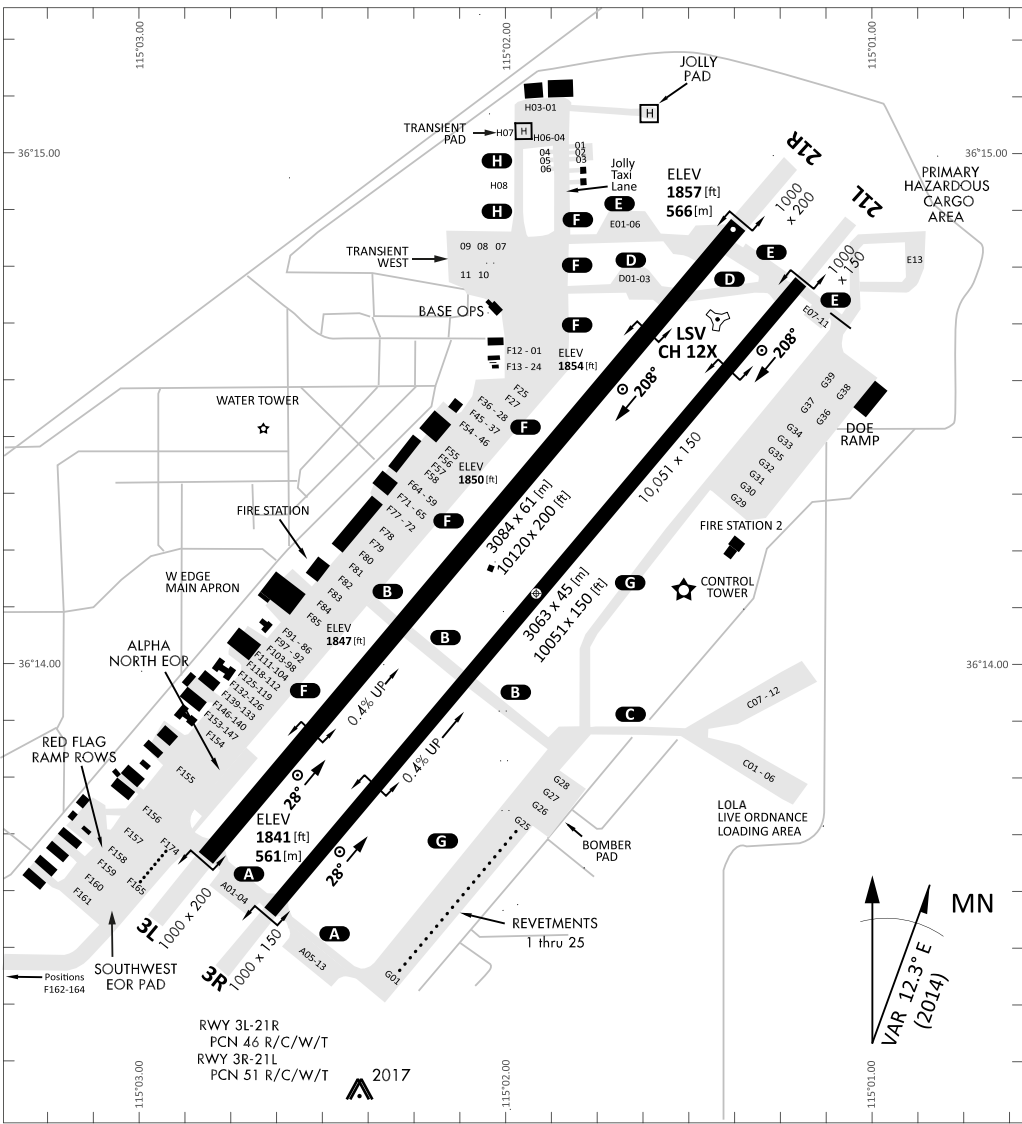
0	1	2	3	4	5	6	7	8	9
C	R	E	M	A	T	I	O	N	S

**KTC 1400 C**

	0	1	2	3	4	5	6	7	8	9
A	YEBA	DQF	WGS	RJ	PH	TOI	XL	KU	CN	VM
B	LNXY	EPW	BQA	DG	IC	KOV	HF	RT	US	JM
C	GEXR	SHM	VCT	NQ	OP	UBW	ID	FA	LJ	KY
D	AQXO	BLN	EKD	IG	VM	HRF	UW	JT	PC	YS
E	QUXK	FPH	LMN	OI	ES	TRC	DW	AJ	GB	YV
F	XWCR	OJB	ANI	SG	YL	HQM	PK	UE	VF	DT
G	TMNC	JXH	FPG	DR	BK	EUO	AI	QY	WS	LV
H	MVOX	SQE	CUR	LY	NH	PGJ	WA	TB	DF	IK
I	QCJU	NYS	WGK	IP	RX	VOE	TL	HB	MF	AD
J	BVYR	HPM	EQW	FT	DI	NCJ	KG	LS	UA	XO
K	UDYH	AMK	QIX	OS	TG	CEJ	VN	FL	WR	PB
L	CNTQ	MHO	KPF	GR	JE	UYI	AD	VB	SL	XW
M	KAOU	SEF	QBR	LG	CN	TDI	WP	YJ	HV	XM
N	CIJE	NAD	TXO	FU	KQ	YPL	BS	VG	MR	WH
O	BXSP	RKO	NWF	VA	LQ	YEM	TU	HC	DJ	IG
P	TUNL	FBH	RIC	YK	GA	POQ	XW	ES	DV	JM
Q	BVUL	IWK	XNO	CR	SJ	FAE	YM	TP	GH	QD
R	JANU	BYX	QCP	KE	IF	WSR	LT	OD	MH	VG
S	WXCY	MVF	EBJ	SN	KR	HLU	PG	TO	DA	IQ
T	QYBH	LTF	MUV	JN	XR	ACK	SE	OW	PI	DG
U	QDCV	PLR	SXI	TM	YF	HWE	NG	JB	KU	OA
V	GYOV	LER	JTX	PI	SM	CDF	NA	UK	WQ	HB
W	RUYT	IQA	CVD	GH	NK	SFB	WM	LP	XO	JE
X	HCVK	DWS	YOB	QT	LX	UNF	PA	JM	GE	RI
Y	WNJK	PRO	ABH	QS	CM	IVE	FG	UT	YL	XD

**NAVAIDS**

<b>Id</b>	<b>Name</b>	<b>Channel</b>	<b>Position</b>	<b>Elevation</b>
BCE	Bryce Canyon	75	N3741.35 W11218.23	9040
BIH	Bishop	33	N3722.62 W11821.99	4114
BLD	Boulder	114	N3559.75 W11451.82	3650
BTY	Beatty	94	N3648.54 W11644.86	2925
CDC	Cedar City	120	N3747.24 W11304.90	5463
DAG	Daggett	79	N3457.75 W11634.69	1760
EED	Needles	99	N3445.96 W11428.43	650
GFS	Goffs	91	N3507.87 W11510.59	4019
GRL	Groom Lake	18	N3713.91 W11548.16	4475
HEC	Hector	74	N3447.83 W11627.78	1854
ILC	Wilson Creek	110	N3815.02 W11423.65	9318
INS	Creech AFB	87	N3635.20 W11540.12	3101
LAS	McCarran Intl	116	N3604.78 W11509.59	2142
LSV	Nellis	12	N3614.68 W11501.50	1864
MLF	Milford	58	N3821.62 W11300.79	4977
MMM	Mormon Mesa	90	N3646.16 W11416.65	2120
MVA	Mina	98	N3833.92 W11801.97	7860
OAL	Coale Dale	124	N3800.20 W11746.23	4800
PGS	Peach Springs	57	N3537.48 W11332.67	4754
TPH	Tonopah Muni	119	N3801.84 W11702.01	5330
TQQ	Silverbow	77	N3748.00 W11647.00	5500
UTI	St George	23	N3705.29 W11335.53	2871



RWY 3L-21R  
 PCN 46 R/C/W/T  
 RWY 3R-21L  
 PCN 51 R/C/W/T  
 2017

PAR	RWY	CAT	MINIMA	ARP	ELEV	Scale
	21L	A B D E	2057 - 0.8 200 (200-0.8/1.6) GS 3°	36° 14.060° N 115° 01.058° W	1857 [ft] 566 [m]	0 300 600 900 1200 1500 [m] 0 1000 2000 3000 4000 5000 [ft]
	3R	A B D E	2057 - 0.8 200 (200-0.8/1.6) GS 3°			
	21R	A C D E	2257 - 1.2 350 (350-1.2/1.6)			
	3L	A C D E	2257 - 1.2 350 (350-1.2/1.6)			

RWY	TORA	TODA	ASDA	LDA	PSN	THR	ALS
21L	10051 [ft] 3063 [m]	11051 [ft] 3368 [m]	11051 [ft] 3368 [m]	10051 [ft] 3063 [m]	36°14.043' N	115°01.018' W	⊕
3R	10120 [ft] 3084 [m]	11120 [ft] 3398 [m]	11120 [ft] 3398 [m]	10120 [ft] 3084 [m]	36°13.029' N	115°02.038' W	

ATIS	NELLIS GROUND	NELLIS TOWER	NELLIS CONTROL	TACAN	ILS RWY 21L	NELLIS EAST	NELLIS WEST
270.100 MHz	275.800   121.800	327.000   132.55	317.525	LSV 12X	109.10 Mhz	384.400	385.000



# FYTTR LOW VISUAL OPERATION CHART | VALID 2014

ATIS  
270.100  
NELLIS GROUND  
275.800  
NELLIS TOWER  
327.000  
NELLIS CONTROL  
317.525  
NELLIS DEP/APP EAST  
384.400  
BLACKJACK  
377.800

CAUTION: If unable to comply  
with restrictions advise ATC  
prior to departure.



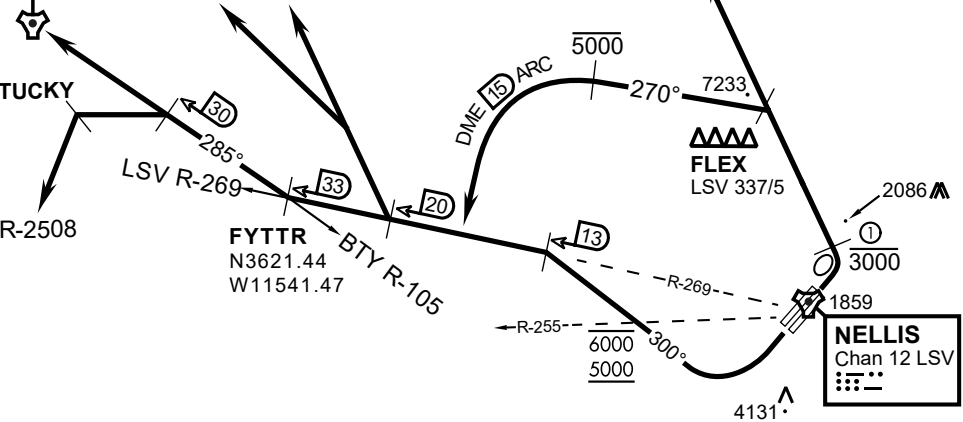
## VMC ONLY

### PILOT RESPONSIBLE FOR TERRAIN AVOIDANCE

① 4 NM from RWY 3L/R

**BEATTY**  
Chan 94 BTY

RANGE 64/65  
RANGE 63



v.130520 NITTR NAV CHART

### DEPARTURE ROUTE DESCRIPTION

#### TAKEOFF RWY 3L/R:

- Remain below 3,000' MSL until north of Race Track and turned westbound.
- Turn left within 4NM of Nellis direct FLEX. Fly north of FLEX and turn left heading 270°.
- Intercept LSV 15 DME ARC at or below 5,000' MSL.
- ARC south, intercept LSV R-269 outbound. Maintain VFR.

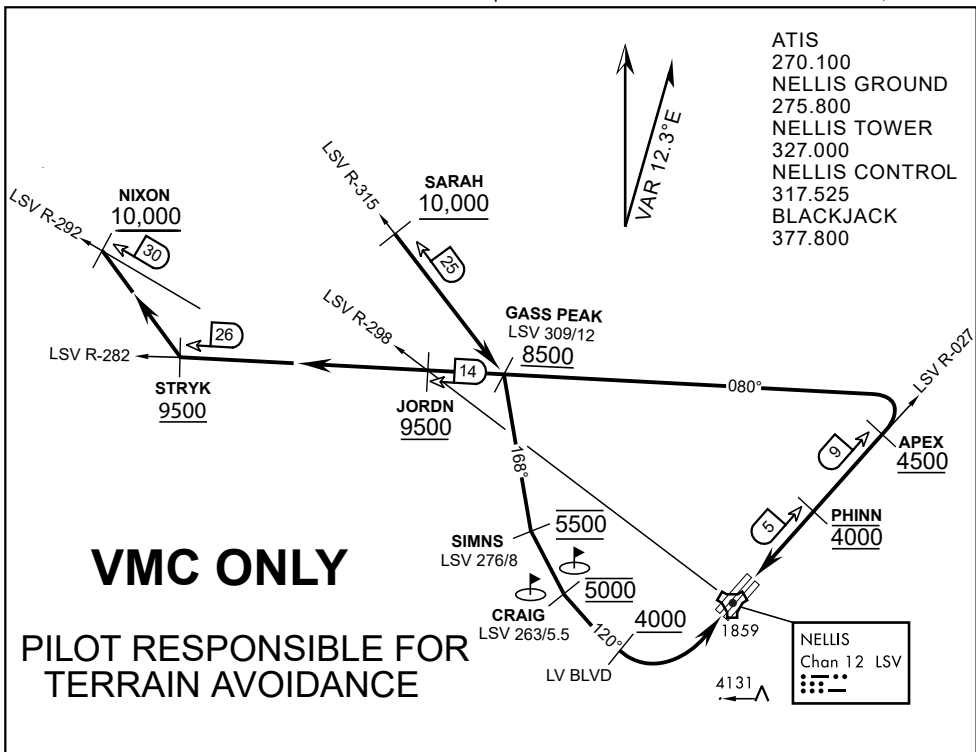
#### TAKEOFF RWY 21L/21R:

- Follow Noise Abatement Procedures.
- Fly runway heading until past Golf Course, turn right heading 300°.
- Cross LSV R-255 between 5,000' and 6,000' , intercept and proceed outbound on the LSV R-269.Recommend climb to 8,500' MSL or appropriate VFR altitude for overflight of North Las Vegas Training Area. Fly routing for appr. mission/transition.

#### TRANSITIONS:

- R-4806:** Turn right at the LSV 269/20 direct to assigned ranges.
- BEATTY:** Turn right at FYTTR direct BTY via the BTY R-105
- R-2508:** Turn right at the FYTTR, intercept the BTY 105/30, direct TUCKY, then direct R-2508

## FYTTR DEPARTURE AND TRANSITIONS (FYTTR LOW)



**APPROACH ROUTE DESCRIPTION**

**APPROACH RWY 3L/R**

Cross STRYK at or above 9,500' MSL, proceed direct GASS PEAK. Cross JORDN at or above 9,500' MSL, cross GASS PEAK at or above 8,500' MSL. Proceed direct SIMNS and cross at 5,500' MSL. Cross Las Vegas Blvd at or above 4,000' MSL then to 3,500' MSL for Initial. Remain within 4 DME if LSV on turn to final.

**VFR STRAIGHT-IN RWY 3L/R**

Depart CRAIG & descend to be at 3,000' MSL by Las Vegas Blvd. Do not descend below 3,000' MSL until within 5 DME of LSV or 4 NM of the runway on turn to final.

**APPROACH RWY 21L/R**

Cross STRYK at or above 9,500' MSL, proceed direct GASS PEAK. Cross JORDN at or above 9,500' MSL, cross GASS PEAK at or above 8,500' MSL. Cross APEX at or above 4,500' MSL then direct 5NM initial. Descend to cross PHINN at 4,000' MSL, Inside 5 NM descend to 3,500' MSL.

**VFR STRAIGHT-IN RWY 21L/R**

Cross APEX at 4,000' MSL. Descend to be at 3,000' MSL at PHINN. Descend to 3,000' MSL at LSV 027/5.

**RANGE 63B EXIT**

**SOUTH:** Via NIXON at or above 10,000' MSL, then direct STRYK.  
**EAST:** Via SARAH at or above 10,000' MSL, then direct GASS PEAK.