

**MISSION DATA CARD**

OPORD		Callsign		Mission		Date/Time		
3179/2024		Edelweiss 1		Training		082000SEP24		
Task							Freq	
AO							264.15	
Departure				Recovery				
FYTTR LOW				STRYK				
#	Callsign		Pilot		IFF	TCN	LSR	NET
-1	Edelweiss 1-1		Monte		1711	1Y	1711	

**LOADOUT**

A/A	2xA9X				GUN	100% HEI-T	
A/G					CHF	120	
POD					FLR	0	
TKS	FPU-8A				FUEL	100%	

**TOLD**

	Takeoff	Target	Joker	Bingo	Land
FUEL	13047			3500	

**AIRBASES**

	Name	TCN	ATIS	GND	TWR	RWY	Elev	ILS
Dep	Nellis AFB	12X	270.1	275.8	327.0	21L	1850	109.1
Arr	Nellis AFB	12X	270.1	275.8	327.0	21L	1850	109.1
Div	Creech AFB	87X	290.45	275.8	360.6			

**FLIGHTPLAN**

#	Name	Navaid/Coords/DME	ALT	TOT
1	FYTTR	LSV 269/33 (N36 21.440 W115 41.470)		
2	Beatty	N36 48.540 W116 44.860	16000	
3	STRYK	LSV 282/26 (N36 25.620 W115 30.700)	9500	
4	GASS PEAK	LSV 309/12 (N36 24.140 W115 10.660)	8500	
5	APEX	LSV 027/09 (N36 21.580 W114 54.340)	4500	

**RADIO CHANNELS**

#	Freq	Name
1		Flight/Squadron specific
2	289.4	Nellis Clearance Delivery
3	275.8	Nellis Ground
4	327.0	Nellis Tower
5	385.4	Nellis Approach/Departure West
6	273.55	Nellis Approach/Departure East
7	317.525	Nellis Control -- Sally
8	254.4	Nellis Control-- Lee
9	305.6	SOF Bullseye
10	343.725	EMERGENCY SINGLE FRQ
11	270.1	Nellis ATIS
12	360.625	Creech AFB Tower
13	250.1	HAVE QUICK 13
14	251.1	HAVE QUICK 14
15	252.1	HAVE QUICK 15
16	377.8	Blackjack
17	265.0	KC-135 AR-641A
18	360.8	KC-135MPRS AR-635
19	319.8	KC-135MPRS AR-625
20	300.05	KC-135 AR-231V

**RAMROD**

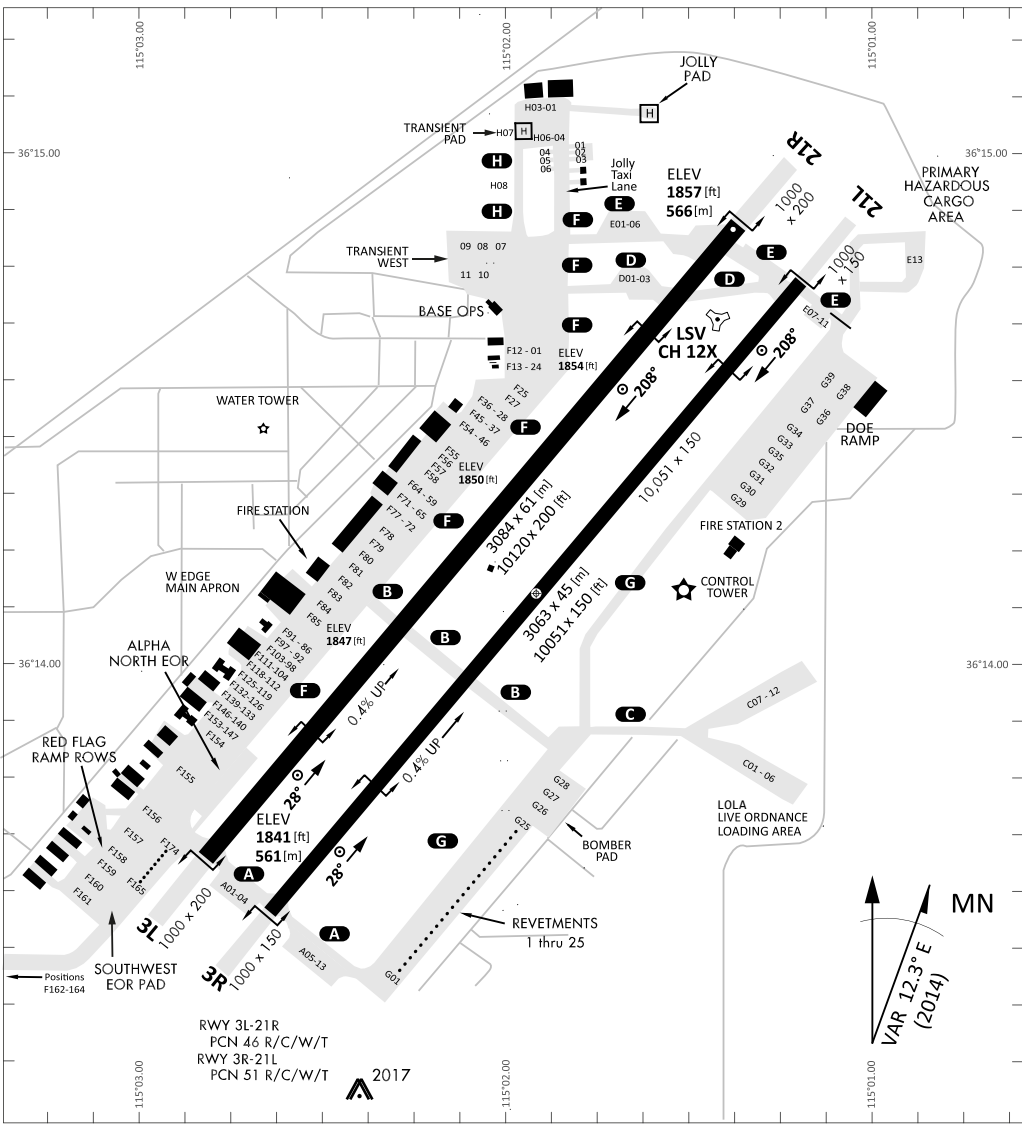
0	1	2	3	4	5	6	7	8	9
B	A	N	K	R	U	P	T	E	D

**KTC 1400 C**

	0	1	2	3	4	5	6	7	8	9
A	NRQM	JIO	WAB	SD	KX	PGC	YL	FV	HT	EU
B	FEPL	QIN	MKS	CO	GW	RAB	TY	DV	HX	JU
C	BTOX	EGY	MNC	LR	WI	FAK	UV	DP	SQ	JH
D	KROJ	SPU	VHM	AF	NE	TDG	CL	XQ	YB	WI
E	AHCL	NFO	MKG	WS	QP	TJU	XV	YI	RD	EB
F	VBSY	WOP	FMQ	AT	LU	JRI	KC	NG	DE	HX
G	UTAB	GJQ	EWL	OX	FS	MDN	HY	PV	IC	KR
H	SBXP	VUG	HAC	EF	NY	TDO	IJ	MW	KL	RQ
I	NDYP	CTU	WHJ	VX	QO	SIA	FG	LR	BE	MK
J	NARB	EXH	QJY	OV	WL	KIG	MP	FS	TD	UC
K	FQVK	AOL	ENP	YI	WR	MUJ	HC	SG	BD	XT
L	JHKA	INF	VVO	EM	BC	YGU	TL	QP	XR	DS
M	SFTD	JXC	YEQ	GU	KO	MBR	AI	WL	HN	PV
N	YJAS	HKW	XOE	UL	PN	MDB	IC	QR	TG	FV
O	OAWT	KDC	SFI	LV	MN	GUH	EB	QY	PX	JR
P	ROTY	HXD	VGQ	BK	LJ	PEM	AN	UI	SF	CW
Q	PIWA	NHC	FXS	UB	TJ	EQD	MG	YR	LV	KO
R	WTVE	RPB	JYL	XO	QG	SID	KF	MC	AH	UN
S	ODKP	WNX	GUE	YQ	HS	RFI	VL	CT	MJ	BA
T	KGvy	LPQ	REH	BA	UW	IJO	ND	TC	XS	MF
U	HUMJ	DVA	TIN	KP	OC	GYQ	LF	EW	XS	RB
V	MDHX	VGB	TOY	FL	EJ	WIR	NU	KQ	SC	PA
W	NFBM	JAG	QEC	DU	VX	KYP	LH	OW	SI	RT
X	TKQX	EDN	FAB	YR	OC	SUH	IL	PG	JM	VW
Y	JEGH	VWM	OPU	IT	FQ	XSB	CD	NA	YR	LK

**NAVAIDS**

<b>Id</b>	<b>Name</b>	<b>Channel</b>	<b>Position</b>	<b>Elevation</b>
BCE	Bryce Canyon	75	N3741.35 W11218.23	9040
BIH	Bishop	33	N3722.62 W11821.99	4114
BLD	Boulder	114	N3559.75 W11451.82	3650
BTY	Beatty	94	N3648.54 W11644.86	2925
CDC	Cedar City	120	N3747.24 W11304.90	5463
DAG	Daggett	79	N3457.75 W11634.69	1760
EED	Needles	99	N3445.96 W11428.43	650
GFS	Goffs	91	N3507.87 W11510.59	4019
GRL	Groom Lake	18	N3713.91 W11548.16	4475
HEC	Hector	74	N3447.83 W11627.78	1854
ILC	Wilson Creek	110	N3815.02 W11423.65	9318
INS	Creech AFB	87	N3635.20 W11540.12	3101
LAS	McCarran Intl	116	N3604.78 W11509.59	2142
LSV	Nellis	12	N3614.68 W11501.50	1864
MLF	Milford	58	N3821.62 W11300.79	4977
MMM	Mormon Mesa	90	N3646.16 W11416.65	2120
MVA	Mina	98	N3833.92 W11801.97	7860
OAL	Coale Dale	124	N3800.20 W11746.23	4800
PGS	Peach Springs	57	N3537.48 W11332.67	4754
TPH	Tonopah Muni	119	N3801.84 W11702.01	5330
TQQ	Silverbow	77	N3748.00 W11647.00	5500
UTI	St George	23	N3705.29 W11335.53	2871



RWY 3L-21R  
 PCN 46 R/C/W/T  
 RWY 3R-21L  
 PCN 51 R/C/W/T  
 2017

PAR	RWY	CAT	MINIMA		ARP	ELEV	Scale 1:35'500	
	21L	A B D E	2057 - 0.8 200	(200-0.8/1.6) GS 3°	36° 14.060° N 115° 01.058° W	1857 [ft] 566 [m]	0 300 600 900 1200 1500 [m]	
	3R	A B D E	2057 - 0.8 200	(200-0.8/1.6) GS 3°			0 1000 2000 3000 4000 5000 [ft]	
SRA	21R	A C D E	2257 - 1.2 350	(350-1.2/1.6)				
	3L	A C D E	2257 - 1.2 350	(350-1.2/1.6)				

RWY	TORA	TODA	ASDA	LDA	PSN	THR	ALS
21L	10051 [ft] 3063 [m]	11051 [ft] 3368 [m]	11051 [ft] 3368 [m]	10051 [ft] 3063 [m]	36°14.043' N	115°01.018' W	⊕
3R	10120 [ft] 3084 [m]	11120 [ft] 3398 [m]	11120 [ft] 3398 [m]	10120 [ft] 3084 [m]	36°13.029' N	115°02.038' W	

ATIS	NELLIS GROUND	NELLIS TOWER	NELLIS CONTROL	TACAN	ILS RWY 21L	NELLIS EAST	NELLIS WEST
270.100 MHz	275.800   121.800	327.000   132.55	317.525	LSV 12X	109.10 Mhz	384.400	385.000

# FYTTR LOW VISUAL OPERATION CHART | VALID 2014

ATIS  
270.100  
NELLIS GROUND  
275.800  
NELLIS TOWER  
327.000  
NELLIS CONTROL  
317.525  
NELLIS DEP/APP EAST  
384.400  
BLACKJACK  
377.800

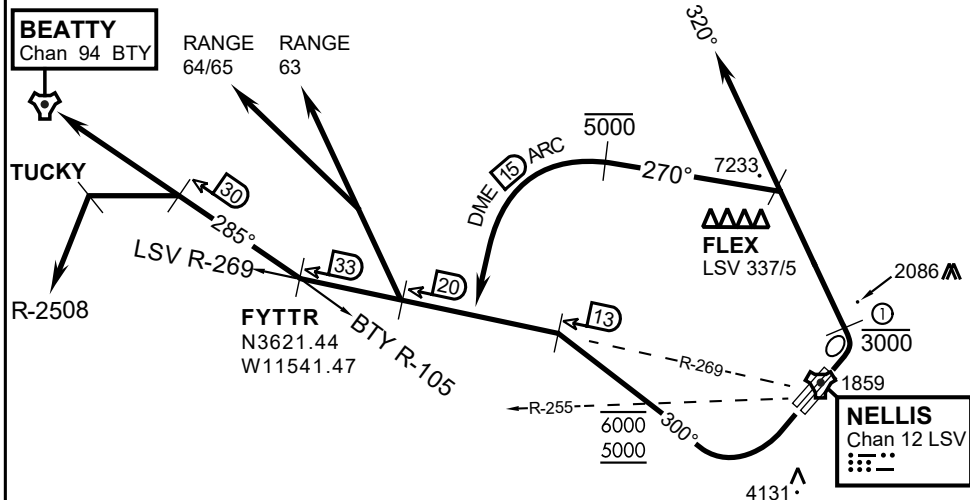
CAUTION: If unable to comply  
with restrictions advise ATC  
prior to departure.



## VMC ONLY

### PILOT RESPONSIBLE FOR TERRAIN AVOIDANCE

① 4 NM from RWY 3L/R



### DEPARTURE ROUTE DESCRIPTION

#### TAKEOFF RWY 3L/R:

- Remain below 3,000' MSL until north of Race Track and turned westbound.
- Turn left within 4NM of Nellis direct FLEX. Fly north of FLEX and turn left heading 270°.
- Intercept LSV 15 DME ARC at or below 5,000' MSL.
- ARC south, intercept LSV R-269 outbound. Maintain VFR.

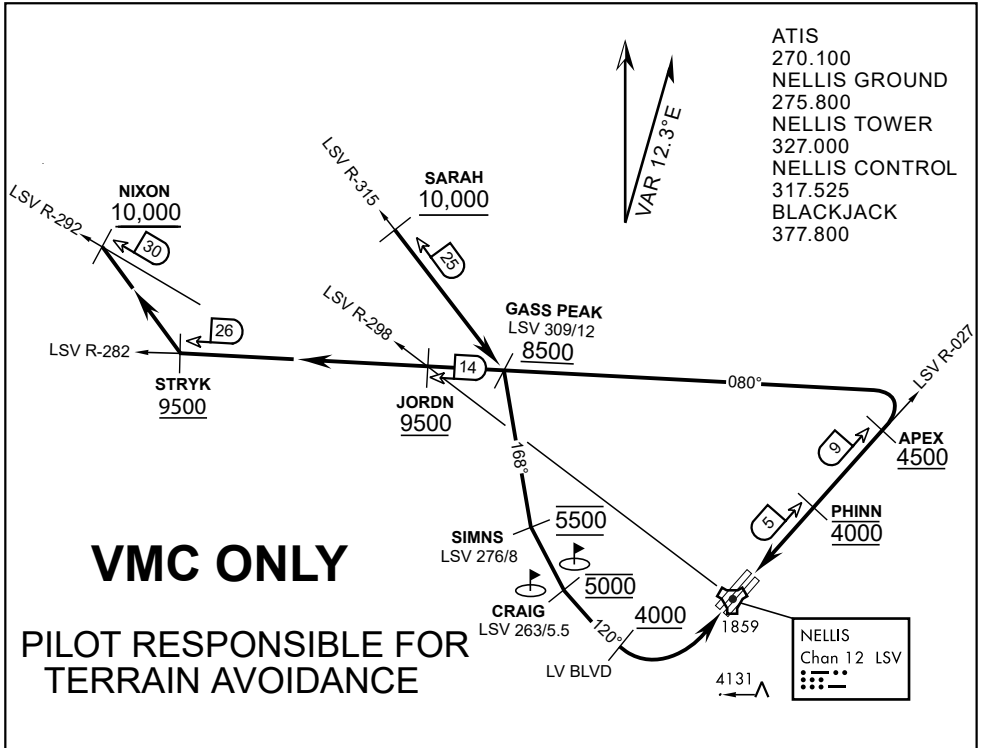
#### TAKEOFF RWY 21L/21R:

- Follow Noise Abatement Procedures.
- Fly runway heading until past Golf Course, turn right heading 300°.
- Cross LSV R-255 between 5,000' and 6,000' , intercept and proceed outbound on the LSV R-269.Recommend climb to 8,500' MSL or appropriate VFR altitude for overflight of North Las Vegas Training Area. Fly routing for appr. mission/transition.

#### TRANSITIONS:

- R-4806:** Turn right at the LSV 269/20 direct to assigned ranges.
- BEATTY:** Turn right at FYTTR direct BTY via the BTY R-105
- R-2508:** Turn right at the FYTTR, intercept the BTY 105/30, direct TUCKY, then direct R-2508

### FYTTR DEPARTURE AND TRANSITIONS (FYTTR LOW)



**APPROACH ROUTE DESCRIPTION**

**APPROACH RWY 3L/R**

Cross STRYK at or above 9,500' MSL, proceed direct GASS PEAK. Cross JORDN at or above 9,500' MSL, cross GASS PEAK at or above 8,500' MSL. Proceed direct SIMNS and cross at 5,500' MSL. Cross Las Vegas Blvd at or above 4,000' MSL then to 3,500' MSL for Initial. Remain within 4 DME if LSV on turn to final.

**VFR STRAIGHT-IN RWY 3L/R**

Depart CRAIG & descend to be at 3,000' MSL by Las Vegas Blvd. Do not descend below 3,000' MSL until within 5 DME of LSV or 4 NM of the runway on turn to final.

**APPROACH RWY 21L/R**

Cross STRYK at or above 9,500' MSL, proceed direct GASS PEAK. Cross JORDN at or above 9,500' MSL, cross GASS PEAK at or above 8,500' MSL. Cross APEX at or above 4,500' MSL then direct 5NM initial. Descend to cross PHINN at 4,000' MSL, Inside 5 NM descend to 3,500' MSL.

**VFR STRAIGHT-IN RWY 21L/R**

Cross APEX at 4,000' MSL. Descend to be at 3,000' MSL at PHINN. Descend to 3,000' MSL at LSV 027/5.

**RANGE 63B EXIT**

- SOUTH:** Via NIXON at or above 10,000' MSL, then direct STRYK.
- EAST:** Via SARAH at or above 10,000' MSL, then direct GASS PEAK.





INDIAN SPRINGS, NEVADA

TACAN INS Chan 87	APCH CRS 065°	Rwy ldg TDZE 3133	9002 3113
		Arpt Elev 3113	

INDIAN SPRINGS AF AUX (KINS)

**▼** \* MISSED APPROACH: Straight ahead to INS TACAN, intercept INS R-outbound, cross 17 DME at or above 9500, then direkt KSV TACAN 114

NELLIS CON

CREECH AFB TOWER  
118.30 60.60

GND CON

**NOT FOR CIVIL USE**

FOR USE UNDER BASIC VFR  
WEATHER MINIMUMS ONLY

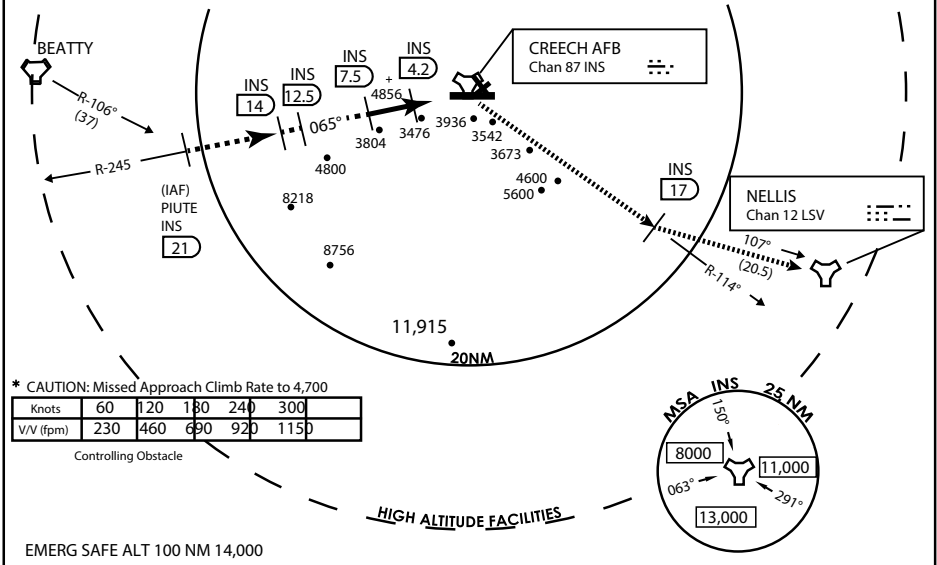
PILOT IS RESPONSIBLE FOR TERRAIN/OBSTACLE AVOIDANCE AND APPROPRIATE VFR CLOUD CLEARANCE FOR ALL

**CAUTION:** Descent gradients are greater than allowed under standard TERPS criteria and inbound course does not meet straight-in criteria

**CAUTION:** Final approach course crosses Runway centerline at MIDFIELD. Maneuvering left of course required prior to landing. Do not Maneuver farther north than the INS R- 258

Modified by viaBog 66 for use with DCS  
NOT FOR REAL LIFE NAVIGATION

Modified by viaBog 66 for use with DCS  
NOT FOR REAL LIFE NAVIGATION



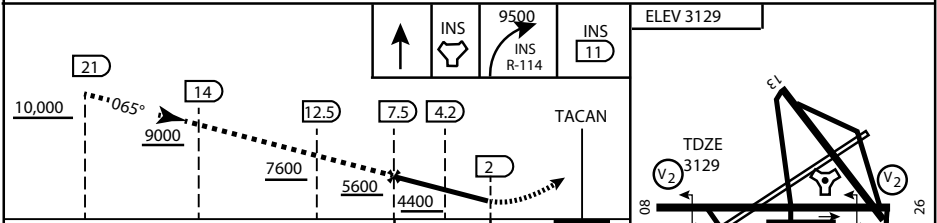
\* CAUTION: Missed Approach Climb Rate to 4,700

Knots	60	120	180	240	300
V/V (fpm)	230	460	690	920	1150

Controlling Obstacle

HIGH ALTITUDE FACILITIES

EMERG SAFE ALT 100 NM 14,000



CATEGORY	A	B	C	D	E
S-8	3760-1 1/2	627 (700-1 1/2)	3760-1 3/4 627 (700-1 3/4)	3760-2 627 (700-2)	3760-2 1/4 627 (700-2 1/4)
CIRCLING	NOT AUTHORIZED				

ELEV 3129

3165

065° 6.3NM from FAF

MIRL Rwy 8-26

CITY OF INDIAN, NEVADA

INDIAN SPRINGS AF AUX (KINS)

(FOR DAY VFR USE ONLY)



# AIRPORT DIAGRAM

476 VFG

CREECH AFB (KINS)  
INDIAN SPRINGS, NEVADA

ATIS  
 122.5  
 CREECH TOWER  
 118.4 360.7 38.65  
 GND CON  
 118.3 275.8  
 CLNC DEL

115°42'W

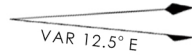
FIELD  
 ELEV  
 3127

80

972 X 150

HOT CARGO PAD

BAK-12

  
 VAR 12.5° E

WEST EOR

115°41'W

476 VFG JAN 2019

476 VFG JAN 2019

CONTROL TOWER  
 BASE OPS

RPA LOLA WEST

RPA LOLA EAST

LOLA / HUNG ORDNANCE

199 X 100  
 ELEV 3127  
 RUNWAY 31/13  
 MQ/RQ-1 ONLY

258.5°

860 X 100  
 313.8°

4064 X 100  
 133.8°

BAK-12

ELEV 3127

115°40'W

EAST EOR

1030 X 150

26

# AIRPORT DIAGRAM

INDIAN SPRINGS, NEVADA  
CREECH AFB (KINS)