

MISSION DATA CARD

OPORD		Callsign		Mission		Date/Time		
3177/2024		Edelweiss 6		Training		092015SEP24		
Task	IFR-Route					Freq		
AO	Nellis-Vegas-Nellis					134.65		
Departure				Recovery				
MORMON MESA FOUR				ILS or LOC/DME X RWY 21L				
#	Callsign		Pilot		IFF	TCN	LSR	NET
-1	Edelweiss 6-1		Stoner		1761	1Y	1661	40/01
-2	Edelweiss 6-2		G-Rex		1762	64Y	1662	40/02

LOADOUT

A/A	A9M				GUN	100% CM	
A/G	7M282L				CHF	120	
POD	TGP, A184				FLR	360	
TKS					FUEL	100%	

TOLD

	Takeoff	Target	Joker	Bingo	Land
FUEL	11087				

AIRBASES

	Name	TCN	ATIS	GND	TWR	RWY	Elev	ILS
Dep	Nellis AFB	12X	270.1	275.8	327.0	21L	1850	109.1
Arr	Nellis AFB	12X	270.1	275.8	327.0	21L	1850	109.1

OTHER FLIGHTS

Callsign	Mission	Airframe	Freq	TCN	Grpld	Laser
Raptor 1	Training	4x F-16C	134.0	1/64		162X
AO		Task				
Nazgul 6	Training	4x F-15E	262.45	21/84		156X
AO	R62 A20	Task	A/G Delivery			
Monster 1	Training	4x A-10C	132.15	1/64	21	161X
AO	R64C	Task	GUN TRAINING			
Rattler 1	Training	2x AH-64D	133.5	1/64		125X
AO	LATNC	Task				
Raptor 2	Training	4x F-16C	134.0	1/64		162X
AO	blue route	Task	IFR Training Flight			
Edelweiss 5	Training	1x F/A-18C	134.65	1/64	40	166X
AO	R64	Task	A2G Delivery			
Edelweiss 4	Training	1x F/A-18C	264.45	1/64		174X
AO		Task				
Tiger 1	Training	4x F/A-18C	261.15	1/64	1	155X
AO	Range 74.06 and 74.08	Task	AG Bomb, AAR and Formation			
Raptor 3	Training	1x F-16C	134.0	3/66		162X
AO	blue route	Task	IFR Training Flight			

RADIO CHANNELS

#	Freq	Name
1		Flight/Squadron specific
2	289.4	Nellis Clearance Delivery
3	275.8	Nellis Ground
4	327.0	Nellis Tower
5	385.4	Nellis Approach/Departure West
6	273.55	Nellis Approach/Departure East
7	317.525	Nellis Control -- Sally
8	254.4	Nellis Control-- Lee
9	305.6	SOF Bullseye
10	343.725	EMERGENCY SINGLE FRQ
11	270.1	Nellis ATIS
12	360.625	Creech AFB Tower
13	250.1	HAVE QUICK 13
14	251.1	HAVE QUICK 14
15	252.1	HAVE QUICK 15
16	377.8	Blackjack
17	265.0	KC-135 AR-641A
18	360.8	KC-135MPRS AR-635
19	319.8	KC-135MPRS AR-625
20	300.05	KC-135 AR-231V

RAMROD

0	1	2	3	4	5	6	7	8	9
C	R	E	M	A	T	I	O	N	S

KTC 1400 C

	0	1	2	3	4	5	6	7	8	9
A	YEBA	DQF	WGS	RJ	PH	TOI	XL	KU	CN	VM
B	LNXY	EPW	BQA	DG	IC	KOV	HF	RT	US	JM
C	GEXR	SHM	VCT	NQ	OP	UBW	ID	FA	LJ	KY
D	AQXO	BLN	EKD	IG	VM	HRF	UW	JT	PC	YS
E	QUXK	FPH	LMN	OI	ES	TRC	DW	AJ	GB	YV
F	XWCR	OJB	ANI	SG	YL	HQM	PK	UE	VF	DT
G	TMNC	JXH	FPG	DR	BK	EUO	AI	QY	WS	LV
H	MVOX	SQE	CUR	LY	NH	PGJ	WA	TB	DF	IK
I	QCJU	NYS	WGK	IP	RX	VOE	TL	HB	MF	AD
J	BVYR	HPM	EQW	FT	DI	NCJ	KG	LS	UA	XO
K	UDYH	AMK	QIX	OS	TG	CEJ	VN	FL	WR	PB
L	CNTQ	MHO	KPF	GR	JE	UYI	AD	VB	SL	XW
M	KAOU	SEF	QBR	LG	CN	TDI	WP	YJ	HV	XM
N	CIJE	NAD	TXO	FU	KQ	YPL	BS	VG	MR	WH
O	BXSP	RKO	NWF	VA	LQ	YEM	TU	HC	DJ	IG
P	TUNL	FBH	RIC	YK	GA	POQ	XW	ES	DV	JM
Q	BVUL	IWK	XNO	CR	SJ	FAE	YM	TP	GH	QD
R	JANU	BYX	QCP	KE	IF	WSR	LT	OD	MH	VG
S	WXCY	MVF	EBJ	SN	KR	HLU	PG	TO	DA	IQ
T	QYBH	LTF	MUV	JN	XR	ACK	SE	OW	PI	DG
U	QDCV	PLR	SXI	TM	YF	HWE	NG	JB	KU	OA
V	GYOV	LER	JTX	PI	SM	CDF	NA	UK	WQ	HB
W	RUYT	IQA	CVD	GH	NK	SFB	WM	LP	XO	JE
X	HCVK	DWS	YOB	QT	LX	UNF	PA	JM	GE	RI
Y	WNJK	PRO	ABH	QS	CM	IVE	FG	UT	YL	XD

NAVAIDS

Id	Name	Channel	Position	Elevation
BCE	Bryce Canyon	75	N3741.35 W11218.23	9040
BIH	Bishop	33	N3722.62 W11821.99	4114
BLD	Boulder	114	N3559.75 W11451.82	3650
BTY	Beatty	94	N3648.54 W11644.86	2925
CDC	Cedar City	120	N3747.24 W11304.90	5463
DAG	Daggett	79	N3457.75 W11634.69	1760
EED	Needles	99	N3445.96 W11428.43	650
GFS	Goffs	91	N3507.87 W11510.59	4019
GRL	Groom Lake	18	N3713.91 W11548.16	4475
HEC	Hector	74	N3447.83 W11627.78	1854
ILC	Wilson Creek	110	N3815.02 W11423.65	9318
INS	Creech AFB	87	N3635.20 W11540.12	3101
LAS	McCarran Intl	116	N3604.78 W11509.59	2142
LSV	Nellis	12	N3614.68 W11501.50	1864
MLF	Milford	58	N3821.62 W11300.79	4977
MMM	Mormon Mesa	90	N3646.16 W11416.65	2120
MVA	Mina	98	N3833.92 W11801.97	7860
OAL	Coale Dale	124	N3800.20 W11746.23	4800
PGS	Peach Springs	57	N3537.48 W11332.67	4754
TPH	Tonopah Muni	119	N3801.84 W11702.01	5330
TQQ	Silverbow	77	N3748.00 W11647.00	5500
UTI	St George	23	N3705.29 W11335.53	2871



RWY 3L-21R
 PCN 46 R/C/W/T
 RWY 3R-21L
 PCN 51 R/C/W/T
 2017

PAR	RWY	CAT	MINIMA		ARP	ELEV	Scale 1:35'500	
	21L	A B D E	2057 - 0.8 200 (200-0.8/1.6)	GS 3°	36° 14.060° N 115° 01.058° W	1857 [ft] 566 [m]	0 300 600 900 1200 1500 [m]	
	3R	A B D E	2057 - 0.8 200 (200-0.8/1.6)	GS 3°			0 1000 2000 3000 4000 5000 [ft]	
SRA	21R	A C D E	2257 - 1.2 350 (350-1.2/1.6)					
	3L	A C D E	2257 - 1.2 350 (350-1.2/1.6)					

RWY	TORA	TODA	ASDA	LDA	PSN	THR	ALS
21L	10051 [ft] 3063 [m]	11051 [ft] 3368 [m]	11051 [ft] 3368 [m]	10051 [ft] 3063 [m]	36°14.043' N	115°01.018' W	⊕
3R	10120 [ft] 3084 [m]	11120 [ft] 3398 [m]	11120 [ft] 3398 [m]	10120 [ft] 3084 [m]	36°13.029' N	115°02.038' W	

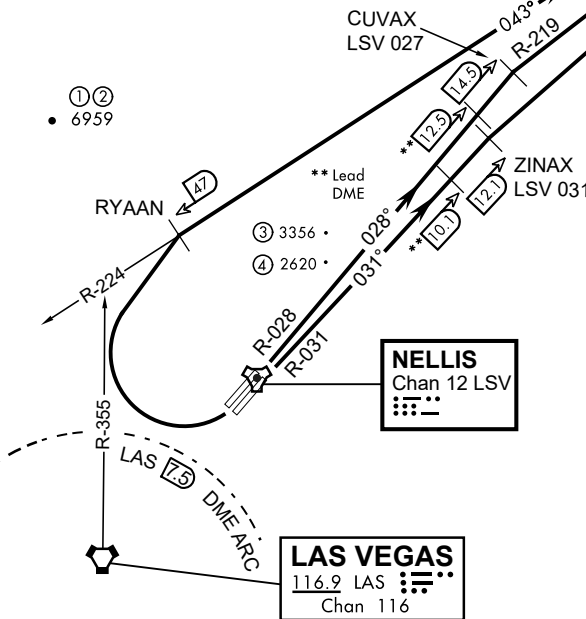
ATIS	NELLIS GROUND	NELLIS TOWER	NELLIS CONTROL	TACAN	ILS RWY 21L	NELLIS EAST	NELLIS WEST
270.100 MHz	275.800 121.800	327.000 132.55	317.525	LSV 12X	109.10 Mhz	384.400	385.000

ATIS
270.100
NELLIS GROUND
275.800
NELLIS TOWER
327.000
NELLIS CONTROL
317.525
NELLIS DEP/APP EAST
384.400
BLACKJACK
377.800



MORMON MESA
114.3 MMM
Chan 90
L-9 H-3

19,000



CAUTION: If unable to comply with restrictions advise ATC prior to departure.

- ① 12.24 NM from Rwy 21R
- ② 12.40 NM from Rwy 21L
- ③ 5.67 NM from Rwy 3L
- ④ 5.85 NM from Rwy 3R

Rwy	Knots	60	120	180	240	300	360
* 3L	V/V(fpm)	291	582	873	1164	1455	1746
* 3R	V/V(fpm)	258	516	774	1032	1290	1548
* 21L	V/V(fpm)	529	1058	1587	2116	2645	3174
* 21R	V/V(fpm)	536	1072	1680	2144	2680	3216
† 3L/R	V/V(fpm)	359	718	1077	1436	1795	2154

* Minimum † ATC Climb Rate
 ① To 3600
 ② To 3200
 ③ To 17,000
 ④ To 13,500
 ⑤ To 19,000

DEPARTURE ROUTE DESCRIPTION

TAKE-OFF RWY 3L

• Fly runway heading to intercept the LSV TACAN R-027 then direct CUVAX, intercept the MMM VORTAC R-219 then direct MMM climbing to FL190 or as assigned, then via assigned route.

TAKE-OFF RWY 3R

• Fly runway heading to intercept the LSV TACAN R-031 then direct ZINAX, intercept the MMM VORTAC R-217 then direct MMM, climbing to FL190 or as assigned, then via assigned route.

TAKE-OFF RWY 21L/R

• Turn right to intercept MMM VORTAC R-224 prior to MMM 47 DME, remain North of the LAS VORTAC 7.5 DME, remain East of LAS R-355, intercept MMM R-224 then direct MMM cross MMM at or above FL190, then via assigned route.

NOISE ABATMENT PROCEDURES: Fly acc. Nellis Noise Abatement instructions

LAS VEGAS, NEVADA

ILS or LOC X RWY 21L

LOC I-DIQ 109.1	APCH CRS 209°	Rwy ldg 21L 21R	10,051 10,120
		TDZE	1865 1869
		Arprt Elev	1869

AL-227 (USAF)

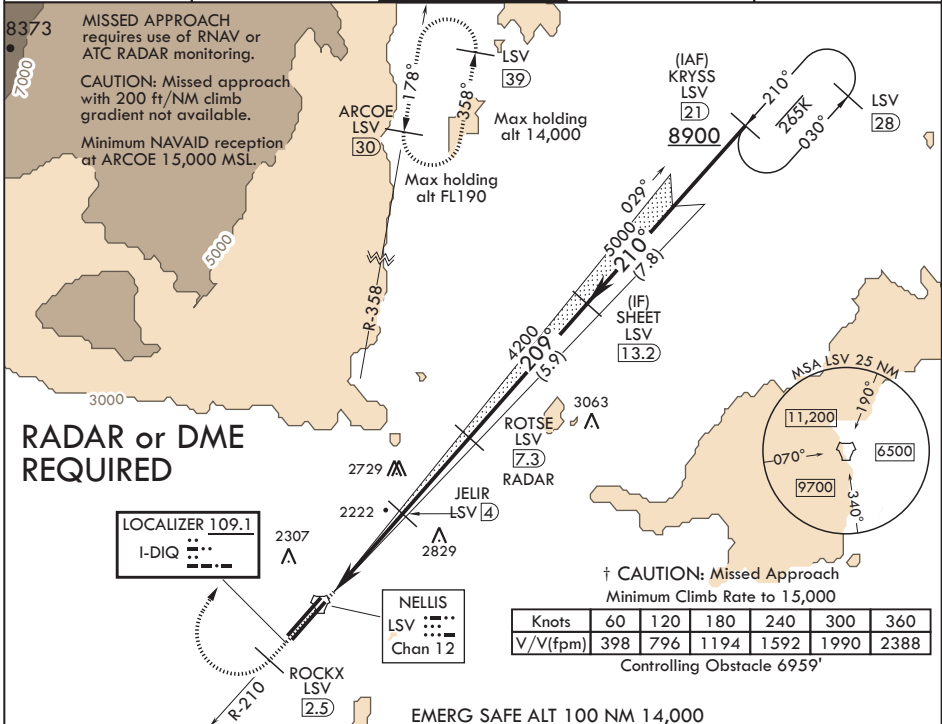
NELLIS AFB (KLSV)

⚠ * When ALS inop, increase all CAT RVR to 40, vis to 3/4 mile.
 ** When ALS inop, increase CAT AB RVR to 55, vis to 1 mile, CAT CDE vis to 1 3/4 miles.
 *** Circling not authorized E of Rwy 3R-21L.



† MISSED APPROACH: Climb to 15,000, intercept LSV TACAN R-210 to 2.5 DME (ROCKX), then climbing right turn heading 020° to join LSV TACAN R-358 to ARCOE and hold, continue climb in hold to 15,000. Missed approach not for civil use.

ATIS 270.1	APP CON 124.95 273.55	TOWER 132.55 327.0	GND CON 121.8 275.8	CLNC DEL 120.9 289.4
----------------------	---------------------------------	------------------------------	-------------------------------	--------------------------------

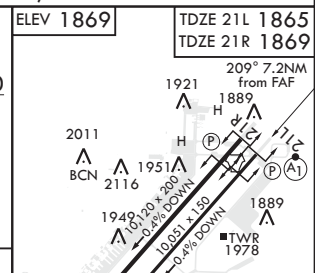
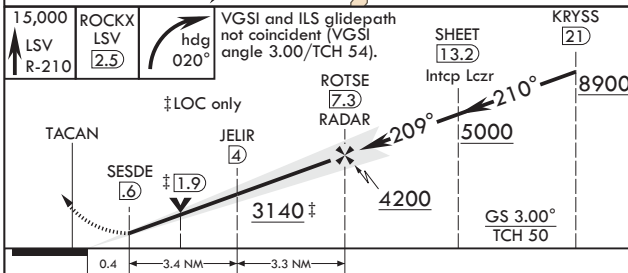


RADAR or DME REQUIRED



Knots	60	120	180	240	300	360
V/f (fpm)	398	796	1194	1592	1990	2388

Controlling Obstacle 6959'



CATEGORY	A	B	C	D	E
S-ILS 21L*	2065/24		200	(200-1/2)	
S-LOC 21L**	2480/24	615 (700-1/2)	2480-1 3/4	615 (700-1 3/4)	
SIDESTEP 21R	2500-1	631 (700-1)	2500-1 3/4	631 (700-1 3/4)	
CIRCLING***	2480-1	2620-1	2620-2 1/4	2840-3	3040-3
	611 (700-1)	751 (800-1)	751 (800-2 1/4)	971 (1000-3)	1171 (1200-3)

HIRL all Rwys	⚠ 2022				
FAF to MAP 6.7 NM					
Knots	60	90	120	150	180
Min:Sec	6:42	4:28	3:21	2:41	2:14

LAS VEGAS, NEVADA

36°14'N - 115°02'W

NELLIS AFB (KLSV)

Amdt 9 03JAN19

ILS or LOC X RWY 21L

SW-4, 05 DEC 2019 to 02 JAN 2020

SW-4, 05 DEC 2019 to 02 JAN 2020