

**MISSION DATA CARD**

OPORD		Callsign		Mission		Date/Time		
3174/2024		Raptor 2		Training		060000SEP24		
Task	A2G - High Drag Training					Freq		
AO	R76					134.0		
Departure				Recovery				
DREAM FOUR				HI-TACAN Y RWY 21L				
#	Callsign		Pilot		IFF	TCN	LSR	NET
-1	Raptor 2-1		Newbie		1621	1Y	1621	
-2	Raptor 2-2		Jinx		1622	64Y	1622	

**LOADOUT**

A/A	2xA120C, 2xA9X				GUN	100% HEI-T	
A/G	6xM82SE				CHF	120	
POD	HTS, A184, TGP				FLR	0	
TKS	2xFT300				FUEL	100%	

**TOLD**

	Takeoff	Target	Joker	Bingo	Land
FUEL	11169			3000	

**AIRBASES**

	Name	TCN	ATIS	GND	TWR	RWY	Elev	ILS
Dep	Nellis AFB	12X	270.1	275.8	327.0	21L	1850	109.1
Arr	Nellis AFB	12X	270.1	275.8	327.0	21L	1850	109.1

**FLIGHTPLAN**

#	Name	Navaid/Coords/DME	ALT	TOT
1	FYTTR	LSV 269/33 (N36 21.440 W115 41.470)	12000	
2	TRES BURROS	N37 10.220 W116 48.470	24000	
3	IP Alpha	N37 20.982 W116 47.066	24000	
4	SARAH	LSV 315/25 (N36 36.450 W115 18.030)	10000	
5	LSV	N36 14.680 W115 01.500	0	

**COMMS**

Radio	Usage
1	11,3,4,16,11,4,3

## NOTES

### Targets

76-01

Target Box Echo

Waypoint: T76.01

Elevation: 5259

MGRS: 11S NB 09255 39337

DD°MM.MMM' N: 37°24.046'

DDD°MM.MMM' W: 116°53.725'

DD°MM'SS" N: 37°24'02"

DDD°MM'SS" W: 116°53'43"

Target Direction: 293 degrees

3 times pairs, 1 sek ripple

**SUPPORT****AWACS**

Callsign

Freq

ALT

Pos

MAGIC

377.8

FL270

N3749 W11417 - N3713 W11446

## OTHER FLIGHTS

Callsign	Mission	Airframe	Freq	TCN	Grpld	Laser
Nazgul 6	Training	4x F-15E	262.45	21/84		156X
AO	R62 A20	Task	A/G Delivery			
Edelweiss 6	Training	4x AH-64D	133.5	1/64	40	156X
AO	Wir bleiben am Platz...	Task				
Tiger 1	Training	2x F/A-18C	261.15	1/64	1	155X
AO	Range 74.06 and 74.08	Task	AG Bomb, AAR and Formation			
Panther 2	Training	2x F/A-18C	261.25	2/65	2	156X
AO	Range 74.06 and 74.08	Task	AG Bomb, AAR and Formation			
Monster 1	Training	4x A-10C	132.15	1/64	21	161X
AO	Groom Lake, R61, R65	Task	SAM Triangulation			
Raptor 1	Training	4x F-16C	134.0	1/64		162X
AO	R61	Task	HD Bombing / Overhead Break			
Chevy 3	Training	1x CH-47F	125.1	1/64		170X
AO		Task				
Edelweiss 4	Training	3x F/A-18C	264.45	1/64		174X
AO		Task				
Raptor 2	Training	4x F-16C	134.0	1/64		162X
AO	R76	Task	A2G - High Drag Training			

**RADIO CHANNELS**

#	Freq	Name
1		Flight/Squadron specific
2	289.4	Nellis Clearance Delivery
3	275.8	Nellis Ground
4	327.0	Nellis Tower
5	385.4	Nellis Approach/Departure West
6	273.55	Nellis Approach/Departure East
7	317.525	Nellis Control -- Sally
8	254.4	Nellis Control-- Lee
9	305.6	SOF Bullseye
10	343.725	EMERGENCY SINGLE FRQ
11	270.1	Nellis ATIS
12	360.625	Creech AFB Tower
13	250.1	HAVE QUICK 13
14	251.1	HAVE QUICK 14
15	252.1	HAVE QUICK 15
16	377.8	Blackjack
17	265.0	KC-135 AR-641A
18	360.8	KC-135MPRS AR-635
19	319.8	KC-135MPRS AR-625
20	300.05	KC-135 AR-231V

**RAMROD**

0	1	2	3	4	5	6	7	8	9
H	U	M	D	I	N	G	E	R	S

**KTC 1400 C**

	0	1	2	3	4	5	6	7	8	9
A	RFHW	BLC	YQM	KD	PS	IJT	UG	VX	OA	NE
B	VSXF	INL	MGW	PQ	RJ	HKY	OB	CU	DE	AT
C	VTDH	BXM	FOA	JR	WE	PUI	LN	KQ	YS	CG
D	KLJT	DEC	IVR	NP	FS	QUY	OG	XW	AH	MB
E	UAWO	QCI	LFX	NV	SK	YDB	HR	GM	JE	TP
F	THML	KWV	RYE	ON	XG	UQF	DP	BC	JI	SA
G	YSDF	OBR	UPW	NA	XE	QCJ	IM	KG	TH	LV
H	KYTB	DMI	UQG	SF	EA	HCR	WV	LX	OP	JN
I	CGBM	VYO	UHS	PR	NT	KLW	QJ	AD	FX	IE
J	KAPI	LGE	CRM	HX	WY	BJU	QD	VF	ST	NO
K	GJAI	BTX	HMR	PV	YL	UDO	EC	WS	FN	QK
L	OQVW	CSJ	HMU	NK	PF	GBA	YD	RT	EX	LI
M	KOIV	LTP	WYR	GU	DC	SBE	QH	JA	MX	NF
N	JSLR	NFE	VIO	YC	PU	QTK	DM	XB	GH	WA
O	BRWK	UVT	AJQ	SD	FH	LGP	OY	ME	NI	XC
P	RUAF	CVE	KTG	YH	LP	MWD	NS	JQ	XO	IB
Q	BORD	CYP	HFK	GQ	MJ	ANL	TV	WX	ES	UI
R	DRUA	JLG	PQY	WN	KE	ICH	VT	SO	XF	MB
S	CUMV	KQL	XNB	OJ	EA	RYG	HS	PF	TW	DI
T	AESD	TKY	CPU	RH	LQ	JMI	WF	BO	VN	GX
U	JGEC	STY	PQH	IR	BL	XUD	MK	NO	FV	WA
V	SENM	YKR	OIB	HL	GT	AWJ	XV	FD	PU	QC
W	TSQH	CAM	LUW	IN	JK	POX	BF	EV	DG	YR
X	HFCY	IAP	DRT	VB	QN	EXK	MG	SL	JU	WO
Y	ABEO	JUC	WGS	VF	QT	IML	XK	DH	NR	PY

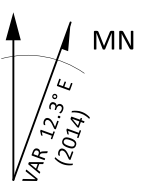
**NAVAIDS**

<b>Id</b>	<b>Name</b>	<b>Channel</b>	<b>Position</b>	<b>Elevation</b>
BCE	Bryce Canyon	75	N3741.35 W11218.23	9040
BIH	Bishop	33	N3722.62 W11821.99	4114
BLD	Boulder	114	N3559.75 W11451.82	3650
BTY	Beatty	94	N3648.54 W11644.86	2925
CDC	Cedar City	120	N3747.24 W11304.90	5463
DAG	Daggett	79	N3457.75 W11634.69	1760
EED	Needles	99	N3445.96 W11428.43	650
GFS	Goffs	91	N3507.87 W11510.59	4019
GRL	Groom Lake	18	N3713.91 W11548.16	4475
HEC	Hector	74	N3447.83 W11627.78	1854
ILC	Wilson Creek	110	N3815.02 W11423.65	9318
INS	Creech AFB	87	N3635.20 W11540.12	3101
LAS	McCarran Intl	116	N3604.78 W11509.59	2142
LSV	Nellis	12	N3614.68 W11501.50	1864
MLF	Milford	58	N3821.62 W11300.79	4977
MMM	Mormon Mesa	90	N3646.16 W11416.65	2120
MVA	Mina	98	N3833.92 W11801.97	7860
OAL	Coale Dale	124	N3800.20 W11746.23	4800
PGS	Peach Springs	57	N3537.48 W11332.67	4754
TPH	Tonopah Muni	119	N3801.84 W11702.01	5330
TQQ	Silverbow	77	N3748.00 W11647.00	5500
UTI	St George	23	N3705.29 W11335.53	2871





RWY 3L-21R  
 PCN 46 R/C/W/T  
 RWY 3R-21L  
 PCN 51 R/C/W/T  
 2017



PAR	RWY	CAT	MINIMA	ARP	ELEV	Scale
	21L	A B D E	2057 - 0.8 200 (200-0.8/1.6) GS 3°	36° 14.060° N 115° 01.058° W	1857 [ft] 566 [m]	0 300 600 900 1200 1500 [m] 0 1000 2000 3000 4000 5000 [ft]
	3R	A B D E	2057 - 0.8 200 (200-0.8/1.6) GS 3°			
	21R	A C D E	2257 - 1.2 350 (350-1.2/1.6)			
	3L	A C D E	2257 - 1.2 350 (350-1.2/1.6)			

RWY	TORA	TODA	ASDA	LDA	PSN	THR	ALS
21L	10051 [ft] 3063 [m]	11051 [ft] 3368 [m]	11051 [ft] 3368 [m]	10051 [ft] 3063 [m]	36°14.043' N	115°01.018' W	⊕
3R	10120 [ft] 3084 [m]	11120 [ft] 3398 [m]	11120 [ft] 3398 [m]	10120 [ft] 3084 [m]	36°13.029' N	115°02.038' W	

ATIS	NELLIS GROUND	NELLIS TOWER	NELLIS CONTROL	TACAN	ILS RWY 21L	NELLIS EAST	NELLIS WEST
270.100 MHz	275.800   121.800	327.000   132.55	317.525	LSV 12X	109.10 Mhz	384.400	385.000

# DREAM FOUR DEPARTURE DREAM4 | VALID 2014

**NELLIS AFB (KLSV)**  
LAS VEGAS, NEVADA

ATIS  
270.100  
NELLIS GROUND  
275.800  
NELLIS TOWER  
327.000  
NELLIS CONTROL  
317.525  
NELLIS DEP/APP EAST  
384.400  
BLACKJACK  
377.800

**DREAM**  
N3710.34  
W11459.53

**MINTT**  
LAS 351/38  
17,000

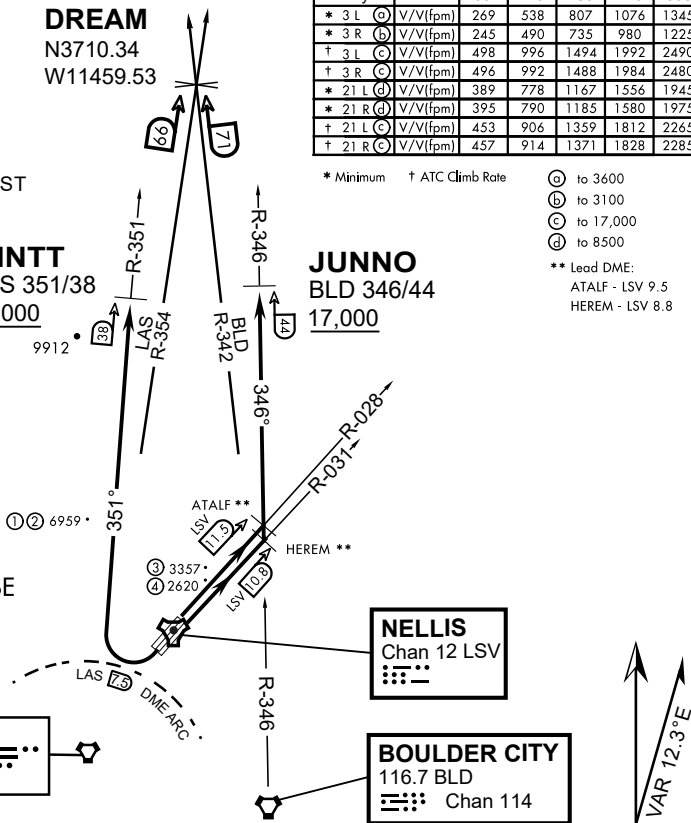
**JUNNO**  
BLD 346/44  
17,000

Rwy	Knots	60	120	180	240	300	360
* 3 L (A)	V/Vl(fpm)	269	538	807	1076	1345	1614
* 3 R (B)	V/Vl(fpm)	245	490	735	980	1225	1470
† 3 L (C)	V/Vl(fpm)	498	996	1494	1992	2490	2988
† 3 R (C)	V/Vl(fpm)	496	992	1488	1984	2480	2976
* 21 L (D)	V/Vl(fpm)	389	778	1167	1556	1945	2334
* 21 R (D)	V/Vl(fpm)	395	790	1185	1580	1975	2370
† 21 L (C)	V/Vl(fpm)	453	906	1359	1812	2265	2718
† 21 R (C)	V/Vl(fpm)	457	914	1371	1828	2285	2742

\* Minimum † ATC Climb Rate

- (A) to 3600
  - (B) to 3100
  - (C) to 17,000
  - (D) to 8500
- \*\* Lead DME:  
ATALF - LSV 9.5  
HEREM - LSV 8.8

- ① 12.24 NM from Rwy 21R
- ② 12.40 NM from Rwy 21L
- ③ 5.67 NM from Rwy 3L
- ④ 5.85 NM from Rwy 3R



## NOT FOR CIVIL USE

CAUTION: If unable to comply with restrictions advise ATC prior to departure.

## DEPARTURE ROUTE DESCRIPTION

### TAKE-OFF RWY 3L

- Fly runway heading to intercept the LSV TACAN R-028 then direct ATALF, intercept the BLD VORTAC R-346 then direct JUNNO, cross JUNNO at or above 17,000, then via assigned route.

### TAKE-OFF RWY 3R

- Fly runway heading to intercept the LSV TACAN R-031 then direct HEREM, intercept the BLD VORTAC R-346 then direct JUNNO, cross JUNNO at or above 17,000, then via assigned route.

### TAKE-OFF RWY 21L/R

- Turn right to intercept LAS VORTAC R-351 outbound. Remain North of LAS 7.5 DME turning Northbound. Intercept LAS R-351 between 5000 and 6000, do not proceed West of LAS R-351. Cross MINTT at or above 17,000, then via assigned route.

NOISE ABATMENT PROCEDURES: Fly acc. Nellis Noise Abatement instructions

# DREAM FOUR DEPARTURE (DREAM4 • DREAM)

# HI-TACAN Y RWY 21L

TACAN LSV Chan 12	APCH CRS 210°	Rwy ldg 21L TDZE 1865 Arprt Elev 1869	Rwy ldg 21R TDZE 1869
----------------------	------------------	---	--------------------------

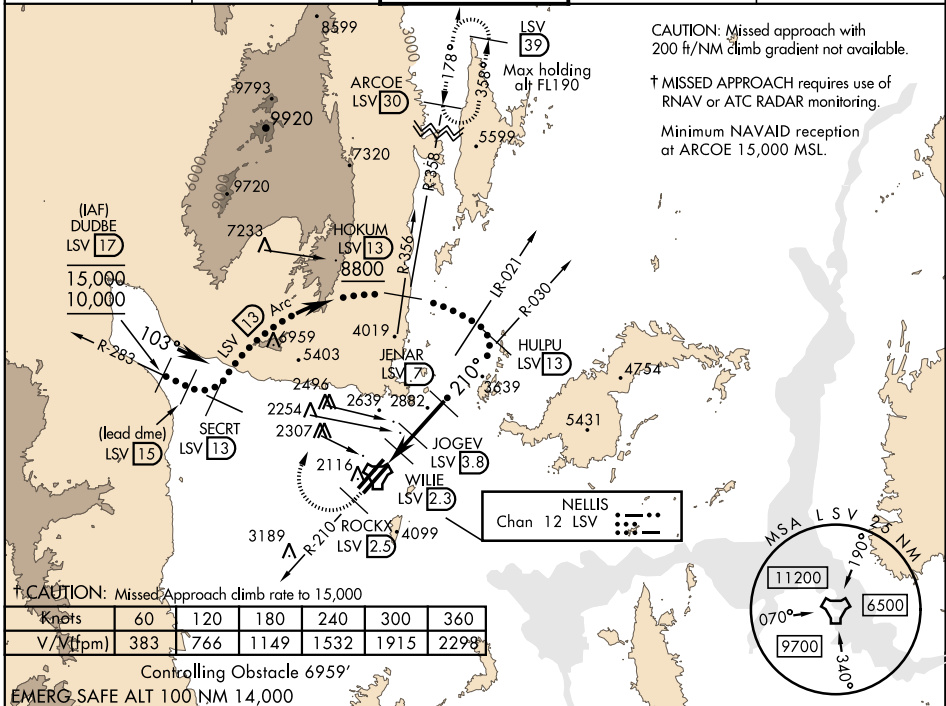
JAL-227 [USAF] NELLIS AFB (KLSV)

\* When ALS inop, increase CAT CDE vis to 1 3/4 miles.  
 \*\* Circling not authorized E of Rwy 3R-21L.



† MISSED APPROACH: Climb to 15,000, intercept LSV TACAN R-210 to 2.5 DME (ROCKX), then climbing right turn heading 020° to join LSV R-358 to ARCOE and hold, continue climb in hold to 15,000. Missed approach not for civil use.

ATIS 270.1	NELLIS APP CON 124.95 273.55	NELLIS TOWER 132.55 327.0	GND CON 121.8 275.8	CLNC DEL 120.9 289.4
---------------	---------------------------------	------------------------------	------------------------	-------------------------



CAUTION: Missed approach with 200 ft/NM climb gradient not available.  
 † MISSED APPROACH requires use of RNAV or ATC RADAR monitoring.  
 Minimum NAVAID reception at ARCOE 15,000 MSL.

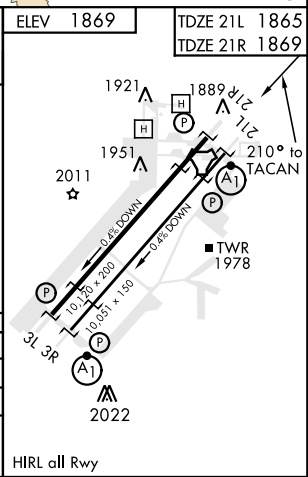
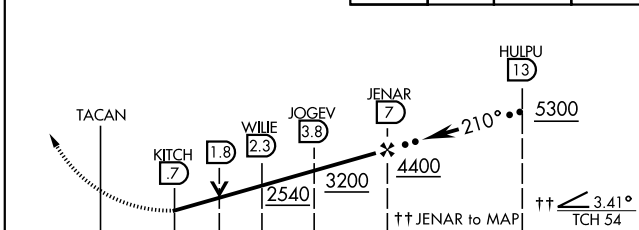
† CAUTION: Missed Approach climb rate to 15,000

Knots	60	120	180	240	300	360
V/Vt (fpm)	383	766	1149	1532	1915	2298

Controlling Obstacle 6959'  
EMERG. SAFE ALT 100 NM 14,000

VGSI and descent angles not coincident (VGSI angle 3.00/TCH 54).

15,000 LSV R-210	ROCKX LSV 2.5	hdg 020°	ARCOE R-358 30	ELEV 1869	TDZE 21L 1865	TDZE 21R 1869
------------------	---------------	----------	----------------	-----------	---------------	---------------



CATEGORY	C	D	E
S-21L *	2460-1 1/4	595 (600-1 1/4)	
SIDESTEP 21R	2460-1	591 (600-1)	
CIRCLING **	2620-2 1/4 751 (800-2 1/4)	2840-3 971 (1000-3)	3040-3 1171 (1200-3)

HIRL all Rwy

# HI-TACAN Y RWY 21L

SW-4, 05 DEC 2019 to 02 JAN 2020

SW-4, 05 DEC 2019 to 02 JAN 2020