

MISSION DATA CARD

OPORD		Callsign		Mission		Date/Time		
3165/2024		Tiger 1		Training		052000SEP24		
Task	AG Bomb, AAR and Formation					Freq		
AO	Range 74.06 and 74.08					261.15		
Departure				Recovery				
FYTTR LOW				STRYK				
#	Callsign		Pilot		IFF	TCN	LSR	NET
-1	Tiger 1-1		Ghost		1011	1Y	1551	01/01
-2	Tiger 1-2		Coach		1012	64Y	1552	01/02

LOADOUT

A/A	2xA9X, A120C				GUN	100% HEI-T	
A/G	8xM82				CHF	90	
POD	TGP				FLR	30	
TKS	FPU-8A				FUEL	100%	

TOLD

	Takeoff	Target	Joker	Bingo	Land
FUEL	13047			4000	2000

AIRBASES

	Name	TCN	ATIS	GND	TWR	RWY	Elev	ILS
Dep	Nellis AFB	12X	270.1	275.8	327.0	21L	1850	109.1
Arr	Nellis AFB	12X	270.1	275.8	327.0	21L	1850	109.1
Div	Creech AFB	87X	290.45	275.8	360.6			

FLIGHTPLAN

#	Name	Navaid/Coords/DME	ALT	TOT
1	FYTTR	N36 21 26.463 W115 41 28.044	14000	
2	FLUSH	N36 50 51.188 W116 20 14.756	22000	
3	GARTH	N37 17 58.873 W116 21 19.299	24000	
4	Range 74	N37 30 10.289 W116 15 12.066	5987	
5	GARTH	N37 17 59.452 W116 21 14.094	24000	
6	AAR	N37 17 00.484 W118 01 56.453	24000	
7	Beatty	N36 51 35.020 W116 47 11.133	24000	
8	Creech	N36 35 05.567 W115 40 19.330	15000	
9	STRYK	N36 25 36.695 W115 30 42.156	10000	
10	GASS PEAK	N36 24 06.775 W115 10 46.183	8800	
11	Nellis AFB	N36 13 32 W115 02 37	3000	

COMMS

Radio	Usage
1	11(Atis), 3(NG), 4(NT), 16(BJ), 18(SH), 16(BJ), 4(NT), 3(NG)
2	Inhouse 261.15
3	MIDS A: 22 / B: 44
4	ARCO1 319.8 / 113Y

SUPPORT**Tanker**

Callsign	TCN	Freq	ALT	TAS
ARCO 1	113Y	319.8	FL250	450
	Pos	AR-625: MVA 168/77 (N3717 W11802)		
SHELL 2	115Y	360.8	FL250	430
	Pos	AR-635: MLF 260/127 (N3831 W11542)		

AWACS

Callsign	Freq	ALT	Pos
MAGIC	377.8	FL270	N3749 W11417 - N3713 W11446

OTHER FLIGHTS

Callsign	Mission	Airframe	Freq	TCN	Grpld	Laser
Nazgul 6	Training	4x F-15E	262.45	21/84		156X
AO	R62 A20	Task	A/G Delivery			
Edelweiss 6	Training	4x AH-64D	133.5	1/64	40	156X
AO	Wir bleiben am Platz...	Task				
Panther 2	Training	2x F/A-18C	261.25	2/65	2	156X
AO	Range 74.06 and 74.08	Task	AG Bomb, AAR and Formation			
Monster 1	Training	4x A-10C	132.15	1/64	21	161X
AO	Groom Lake, R61, R65	Task	SAM Triangulation			
Raptor 1	Training	4x F-16C	134.0	1/64		162X
AO	R61	Task	HD Bombing / Overhead Break			
Chevy 3	Training	1x CH-47F	125.1	1/64		170X
AO		Task				
Edelweiss 4	Training	3x F/A-18C	264.45	1/64		174X
AO		Task				
Raptor 2	Training	4x F-16C	134.0	1/64		162X
AO	R76	Task	A2G - High Drag Training			
Raptor 2	Training	4x F-16C	134.0	1/64		162X
AO	R76	Task	A2G - High Drag Training			

RADIO CHANNELS

#	Freq	Name
1		Flight/Squadron specific
2	289.4	Nellis Clearance Delivery
3	275.8	Nellis Ground
4	327.0	Nellis Tower
5	385.4	Nellis Approach/Departure West
6	273.55	Nellis Approach/Departure East
7	317.525	Nellis Control -- Sally
8	254.4	Nellis Control-- Lee
9	305.6	SOF Bullseye
10	343.725	EMERGENCY SINGLE FRQ
11	270.1	Nellis ATIS
12	360.625	Creech AFB Tower
13	250.1	HAVE QUICK 13
14	251.1	HAVE QUICK 14
15	252.1	HAVE QUICK 15
16	377.8	Blackjack
17	265.0	KC-135 AR-641A
18	360.8	KC-135MPRS AR-635
19	319.8	KC-135MPRS AR-625
20	300.05	KC-135 AR-231V

RAMROD

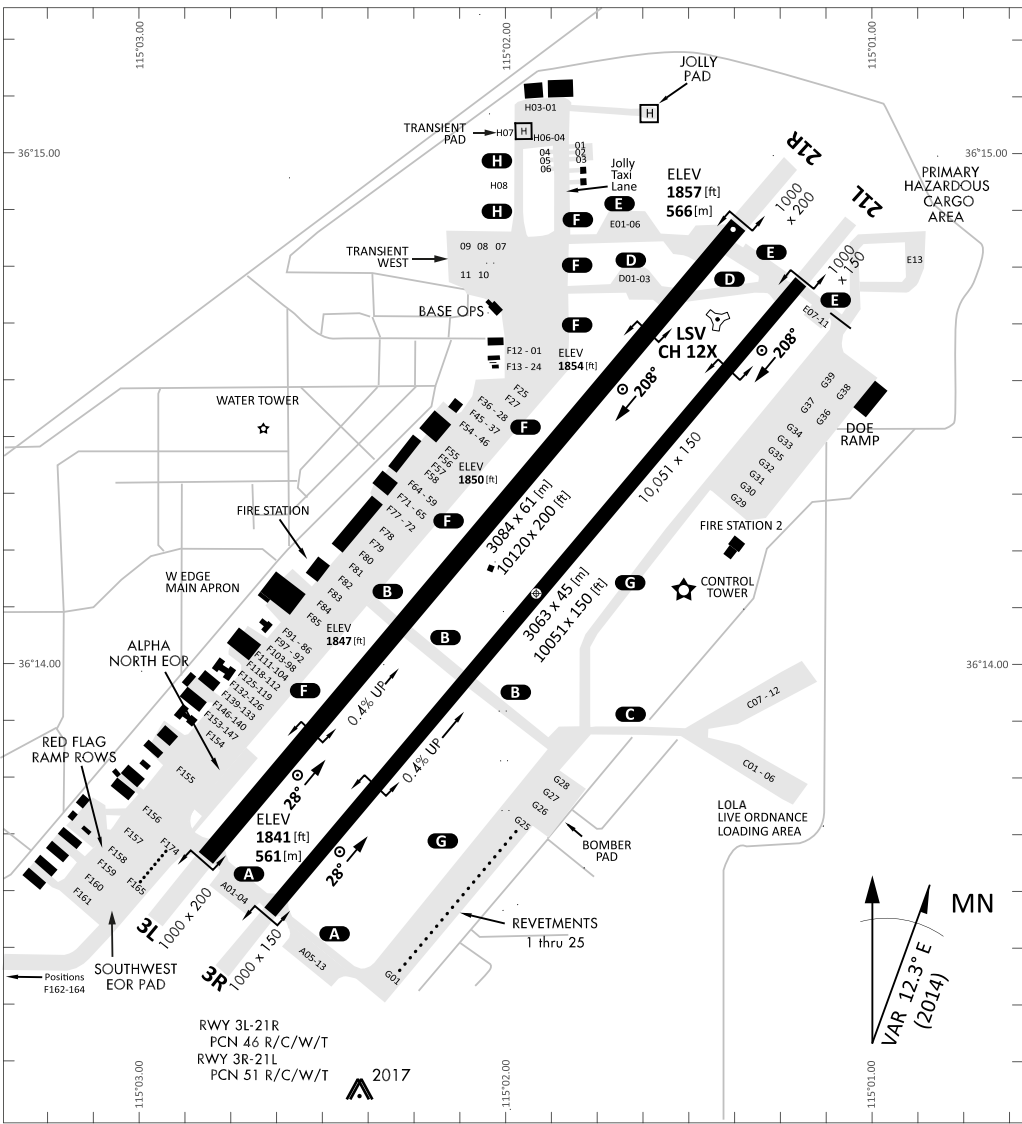
0	1	2	3	4	5	6	7	8	9
C	H	A	R	M	I	N	G	L	Y

KTC 1400 C

	0	1	2	3	4	5	6	7	8	9
A	NLVK	MEQ	TIB	WU	DY	CFH	XP	JO	AG	SR
B	UVJT	AMC	RWN	GQ	HO	DBX	SK	PF	LE	YI
C	XOET	YKU	IGJ	HA	PL	VMC	RD	NF	BS	WQ
D	HIBW	UQY	MND	CP	JT	LAF	GX	OS	ER	VK
E	INHP	MDG	BKX	WA	UV	RJE	TC	YS	FO	LQ
F	TIES	HXP	WOJ	YF	KM	BUL	AV	NR	DG	CQ
G	JUMC	NIL	HFV	TB	EG	KPD	XA	OW	YR	QS
H	GCKH	MOP	YWI	UB	AR	QLS	FD	VT	EN	XJ
I	TGOX	QNS	KLY	UV	CR	WEI	JP	AF	HD	BM
J	MHCW	PEG	JVF	NY	DL	RKX	QS	TI	OB	AU
K	LKAY	END	OWI	VQ	JX	HTS	GP	MR	FC	BU
L	DEMX	ANG	LYQ	UK	SB	HCR	FW	JV	OT	PI
M	IECQ	AXL	HOG	MN	WD	BSJ	FV	KR	UP	YT
N	WEJM	ALH	SYQ	UN	TX	ODI	RV	KF	PB	CG
O	QVSA	YMP	KRU	EI	ON	CTH	DG	XL	FB	JW
P	VADG	QTL	MUB	JF	CW	PKN	RE	HY	OX	IS
Q	KXEB	CUT	NSG	QV	PH	MJD	FR	WL	AO	IY
R	TQNS	PWH	MJK	RV	CF	AID	XB	UG	LE	YO
S	UWVY	EBX	RAK	LJ	HO	CFI	DP	MG	SN	QT
T	NWBK	TOC	XSM	AD	FJ	LIV	EU	QY	HG	RP
U	FTBG	DSU	JYR	QM	XC	LKA	IV	PN	EW	HO
V	XGBW	UFD	TLJ	QA	PM	OCH	SN	VY	RK	IE
W	CLYR	HMW	KQB	PJ	SN	TXF	OG	IU	VD	AE
X	RSCX	DUV	FYG	KH	IM	TEL	WB	JO	NA	QP
Y	VDXC	YBG	PWJ	HE	FL	ROS	IM	UN	AK	QT

NAVAIDS

Id	Name	Channel	Position	Elevation
BCE	Bryce Canyon	75	N3741.35 W11218.23	9040
BIH	Bishop	33	N3722.62 W11821.99	4114
BLD	Boulder	114	N3559.75 W11451.82	3650
BTY	Beatty	94	N3648.54 W11644.86	2925
CDC	Cedar City	120	N3747.24 W11304.90	5463
DAG	Daggett	79	N3457.75 W11634.69	1760
EED	Needles	99	N3445.96 W11428.43	650
GFS	Goffs	91	N3507.87 W11510.59	4019
GRL	Groom Lake	18	N3713.91 W11548.16	4475
HEC	Hector	74	N3447.83 W11627.78	1854
ILC	Wilson Creek	110	N3815.02 W11423.65	9318
INS	Creech AFB	87	N3635.20 W11540.12	3101
LAS	McCarran Intl	116	N3604.78 W11509.59	2142
LSV	Nellis	12	N3614.68 W11501.50	1864
MLF	Milford	58	N3821.62 W11300.79	4977
MMM	Mormon Mesa	90	N3646.16 W11416.65	2120
MVA	Mina	98	N3833.92 W11801.97	7860
OAL	Coale Dale	124	N3800.20 W11746.23	4800
PGS	Peach Springs	57	N3537.48 W11332.67	4754
TPH	Tonopah Muni	119	N3801.84 W11702.01	5330
TQQ	Silverbow	77	N3748.00 W11647.00	5500
UTI	St George	23	N3705.29 W11335.53	2871



RWY 3L-21R
 PCN 46 R/C/W/T
 RWY 3R-21L
 PCN 51 R/C/W/T
 2017

PAR	RWY	CAT	MINIMA	ARP	ELEV	Scale 1:35'500
	21L	A B D E	2057 - 0.8 200 (200-0.8/1.6) GS 3°	36° 14.060° N 115° 01.058° W	1857 [ft] 566 [m]	0 300 600 900 1200 1500 [m]
	3R	A B D E	2057 - 0.8 200 (200-0.8/1.6) GS 3°			0 1000 2000 3000 4000 5000 [ft]
SRA	21R	A C D E	2257 - 1.2 350 (350-1.2/1.6)			
	3L	A C D E	2257 - 1.2 350 (350-1.2/1.6)			

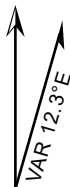
RWY	TORA	TODA	ASDA	LDA	PSN	THR	ALS
21L	10051 [ft] 3063 [m]	11051 [ft] 3368 [m]	11051 [ft] 3368 [m]	10051 [ft] 3063 [m]	36°14.043' N	115°01.018' W	⊕
3R	10120 [ft] 3084 [m]	11120 [ft] 3398 [m]	11120 [ft] 3398 [m]	10120 [ft] 3084 [m]	36°13.029' N	115°02.038' W	

ATIS	NELLIS GROUND	NELLIS TOWER	NELLIS CONTROL	TACAN	ILS RWY 21L	NELLIS EAST	NELLIS WEST
270.100 MHz	275.800 121.800	327.000 132.55	317.525	LSV 12X	109.10 Mhz	384.400	385.000

FYTTR LOW VISUAL OPERATION CHART | VALID 2014

ATIS
270.100
NELLIS GROUND
275.800
NELLIS TOWER
327.000
NELLIS CONTROL
317.525
NELLIS DEP/APP EAST
384.400
BLACKJACK
377.800

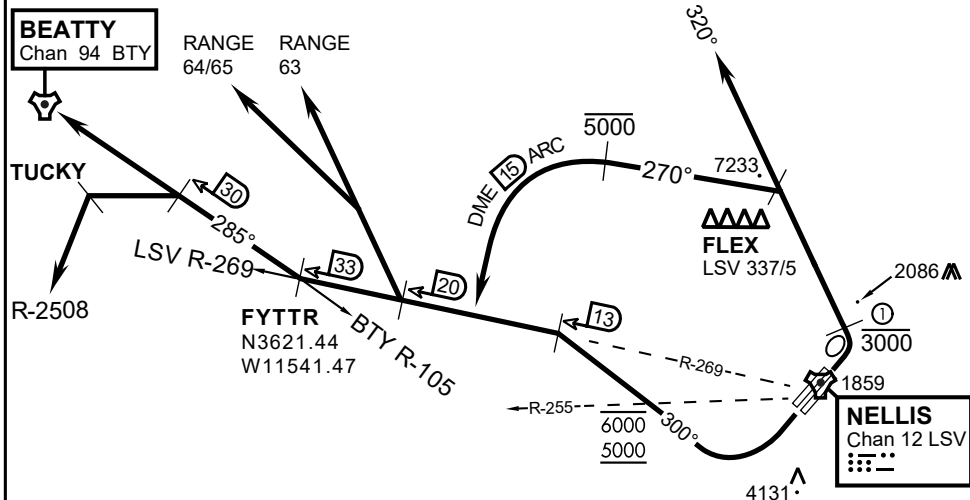
CAUTION: If unable to comply with restrictions advise ATC prior to departure.



VMC ONLY

PILOT RESPONSIBLE FOR TERRAIN AVOIDANCE

① 4 NM from RWY 3L/R



DEPARTURE ROUTE DESCRIPTION

TAKEOFF RWY 3L/R:

- Remain below 3,000' MSL until north of Race Track and turned westbound.
- Turn left within 4NM of Nellis direct FLEX. Fly north of FLEX and turn left heading 270°.
- Intercept LSV 15 DME ARC at or below 5,000' MSL.
- ARC south, intercept LSV R-269 outbound. Maintain VFR.

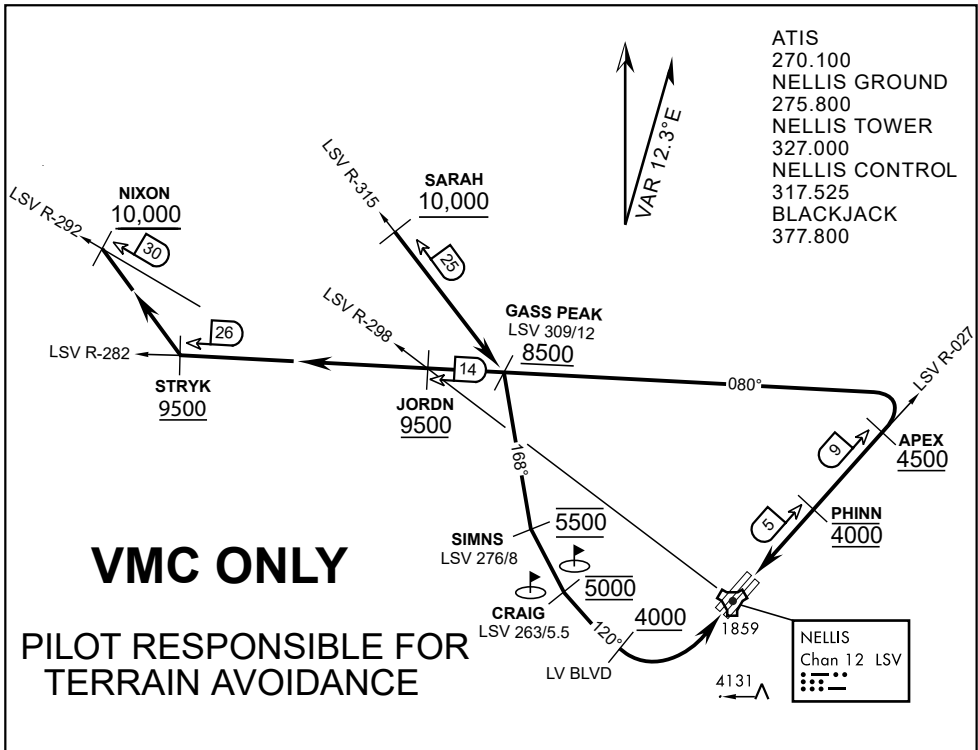
TAKEOFF RWY 21L/21R:

- Follow Noise Abatement Procedures.
- Fly runway heading until past Golf Course, turn right heading 300°.
- Cross LSV R-255 between 5,000' and 6,000' , intercept and proceed outbound on the LSV R-269.Recommend climb to 8,500' MSL or appropriate VFR altitude for overflight of North Las Vegas Training Area. Fly routing for appr. mission/transition.

TRANSITIONS:

- R-4806:** Turn right at the LSV 269/20 direct to assigned ranges.
- BEATTY:** Turn right at FYTTR direct BTY via the BTY R-105
- R-2508:** Turn right at the FYTTR, intercept the BTY 105/30, direct TUCKY, then direct R-2508

FYTTR DEPARTURE AND TRANSITIONS (FYTTR LOW)



APPROACH ROUTE DESCRIPTION

APPROACH RWY 3L/R

Cross STRYK at or above 9,500' MSL, proceed direct GASS PEAK. Cross JORDN at or above 9,500' MSL, cross GASS PEAK at or above 8,500' MSL. Proceed direct SIMNS and cross at 5,500' MSL. Cross Las Vegas Blvd at or above 4,000' MSL then to 3,500' MSL for Initial. Remain within 4 DME if LSV on turn to final.

VFR STRAIGHT-IN RWY 3L/R

Depart CRAIG & descend to be at 3,000' MSL by Las Vegas Blvd. Do not descend below 3,000' MSL until within 5 DME of LSV or 4 NM of the runway on turn to final.

APPROACH RWY 21L/R

Cross STRYK at or above 9,500' MSL, proceed direct GASS PEAK. Cross JORDN at or above 9,500' MSL, cross GASS PEAK at or above 8,500' MSL. Cross APEX at or above 4,500' MSL then direct 5NM initial. Descend to cross PHINN at 4,000' MSL, Inside 5 NM descend to 3,500' MSL.

VFR STRAIGHT-IN RWY 21L/R

Cross APEX at 4,000' MSL. Descend to be at 3,000' MSL at PHINN. Descend to 3,000' MSL at LSV 027/5.

RANGE 63B EXIT

SOUTH: Via NIXON at or above 10,000' MSL, then direct STRYK.
EAST: Via SARAH at or above 10,000' MSL, then direct GASS PEAK.



INDIAN SPRINGS, NEVADA

TACAN INS Chan 87	APCH CRS 065°	Rwy ldg TDZE 3133	9002 3113
		Arpt Elev 3113	

INDIAN SPRINGS AF AUX (KINS)

▼ * MISSED APPROACH: Straight ahead to INS TACAN, intercept INS R-outbound, cross 17 DME at or above 9500, then direkt KSV TACAN 114

NELLIS CON - CREECH AFB TOWER 118.30 60.60 - GND CON - 0

NOT FOR CIVIL USE

FOR USE UNDER BASIC VFR WEATHER MINIMUMS ONLY

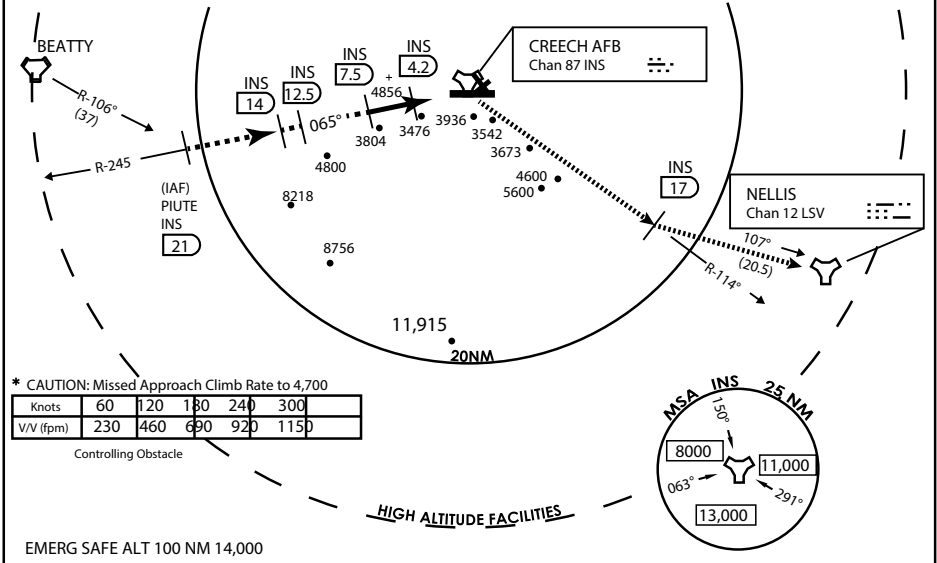
PILOT IS RESPONSIBLE FOR TERRAIN/OBSTACLE AVOIDANCE AND APPROPRIATE VFR CLOUD CLEARANCE FOR ALL

CAUTION: Descent gradients are greater than allowed under standard TERPS criteria and inbound course does not meet straight-in criteria

CAUTION: Final approach course crosses Runway centerline at MIDFIELD. Maneuvering left of course required prior to landing. Do not Maneuver farther north than the INS R- 258

Modified by viaBog 66 for use with DCS
NOT FOR REAL LIFE NAVIGATION

Modified by viaBog 66 for use with DCS
NOT FOR REAL LIFE NAVIGATION



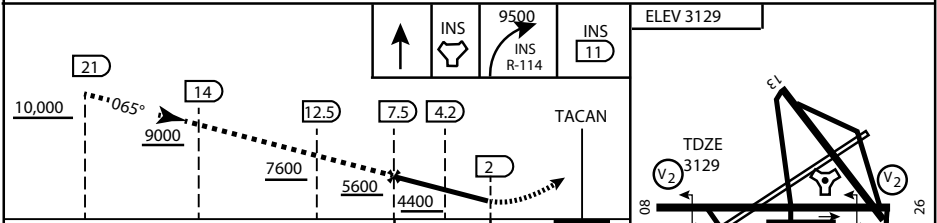
* CAUTION: Missed Approach Climb Rate to 4,700

Knots	60	120	180	240	300
V/V (fpm)	230	460	690	920	1150

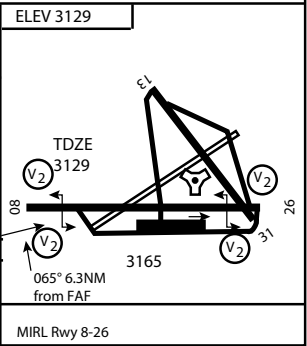
Controlling Obstacle

HIGH ALTITUDE FACILITIES

EMERG SAFE ALT 100 NM 14,000



CATEGORY	A	B	C	D	E
S-8	3760-1 1/2	627 (700-1 1/2)	3760-1 3/4 627 (700-1 3/4)	3760-2 627 (700-2)	3760-2 1/4 627 (700-2 1/4)
CIRCLING	NOT AUTHORIZED				



CITY OF INDIAN, NEVADA

INDIAN SPRINGS AF AUX (KINS)

(FOR DAY VFR USE ONLY)



AIRPORT DIAGRAM

476 VFG

CREECH AFB (KINS)
INDIAN SPRINGS, NEVADA

ATIS
122.5
CREECH TOWER
118.4 360.7 38.65
GND CON
118.3 275.8
CLNC DEL

FIELD
ELEV
3127

HOT
CARGO
PAD

VAR 12.5° E

WEST
EOR

BAK-12

115°41'W

476 VFG JAN 2019

CONTROL
TOWER
BASE
OPS

RPA LOLA
WEST

RPA LOLA
EAST

LOLA /
HUNG
ORDNANCE

199 X 100
ELEV
3127
RUNWAY
31/13
MQ/RQ-1
ONLY

9002 X 150

258.5°

860 X 100
313.8°

4064 X 100

115°40'W

EAST
EOR

ELEV
3127

1030 X 150

26

476 VFG JAN 2019

AIRPORT DIAGRAM

INDIAN SPRINGS, NEVADA
CREECH AFB (KINS)