

MISSION DATA CARD

OPORD		Callsign		Mission		Date/Time		
3163/2024		Nazgul 6		Training		052000SEP24		
Task	A/G Delivery					Freq		
AO	R62 A20					262.45		
Departure				Recovery				
DREAM FOUR				ARCOE				
#	Callsign		Pilot		IFF	TCN	LSR	NET
-1	Nazgul 6-1		Tank/UTA		1161	21Y	1561	
-2	Nazgul 6-2		Razorback/TaB		1162	84Y	1562	
-3	Nazgul 6-3		Repsus/Lempo		1163	84X	1563	

LOADOUT

A/A	A9M, A120C				GUN	100%	SAPHEI
A/G	G10, 6xG54				CHF	240	
POD	TGT, NAV				FLR	0	
TKS	FT610				FUEL	100%	

TOLD

	Takeoff	Target	Joker	Bingo	Land
FUEL	26553		6000	4000	

AIRBASES

	Name	TCN	ATIS	GND	TWR	RWY	Elev	ILS
Dep	Nellis AFB	12X	270.1	275.8	327.0	21L	1850	109.1
Arr	Nellis AFB	12X	270.1	275.8	327.0	21L	1850	109.1
Div	Nellis AFB	12X	270.1	275.8	327.0	21L	1850	109.1

FLIGHTPLAN

#	Name	Navaid/Coords/DME	ALT	TOT
1	IP TBird Lake	LSV 334/45 (N36 58.100 W115 13.500)	20000	
2	Range 62A	N36 55 W115 27	3406	
3	Range 63A	N36 45.100 W115 27.400	3485	

COMMS

Radio	Usage
1	262.450
2	3, 4, 16, 4, 3

NOTES

Departure DREAM LOW

pass JUNNO

Enter R62A via ALAMO BRAVO (CHARLIE)

IP TBird Lake, attack heading 250°, Hot 270, 10nm, LH, A20

Bomb Training R62A on Targets 62

use bombing pattern as FL/WM or EL1/EL2

harddeck 7000MSL

avoid container

avoid Range 63A

#1 2xGBU54 - stationary vehicles

#2 1xGBU54 - moving target 62-08

#3 1xGBU10 - whole flight trail 1nm different targets in 62-09

LANTIRN VILLAGE

#4 have fun with spare ordonance

or

AAR Pegasus 1 -> ARCOE REC

STRYK Recovery via SARAH

Briefing:

Show map

Show range description

Brevity talk on, contact, captured

How to get into trail

SUPPORT**Tanker**

Callsign	TCN	Freq	ALT	TAS
TEXACO 2	95Y	289.7	FL220	420
	Pos	Pegasus.1: CDC 166/102 (N3730 W11440)		

AWACS

Callsign	Freq	ALT	Pos
MAGIC	377.8	FL270	N3749 W11417 - N3713 W11446

OTHER FLIGHTS

Callsign	Mission	Airframe	Freq	TCN	Grpld	Laser
Edelweiss 6	Training	4x AH-64D	133.5	1/64	40	156X
AO	Wir bleiben am Platz...	Task				
Tiger 1	Training	2x F/A-18C	261.15	1/64	1	155X
AO	Range 74.06 and 74.08	Task	AG Bomb, AAR and Formation			
Panther 2	Training	2x F/A-18C	261.25	2/65	2	156X
AO	Range 74.06 and 74.08	Task	AG Bomb, AAR and Formation			
Monster 1	Training	4x A-10C	132.15	1/64	21	161X
AO	Groom Lake, R61, R65	Task	SAM Triangulation			
Raptor 1	Training	4x F-16C	134.0	1/64		162X
AO	R61	Task	HD Bombing / Overhead Break			
Chevy 3	Training	1x CH-47F	125.1	1/64		170X
AO		Task				
Edelweiss 4	Training	3x F/A-18C	264.45	1/64		174X
AO		Task				
Raptor 2	Training	4x F-16C	134.0	1/64		162X
AO	R76	Task	A2G - High Drag Training			
Raptor 2	Training	4x F-16C	134.0	1/64		162X
AO	R76	Task	A2G - High Drag Training			

RADIO CHANNELS

#	Freq	Name
1		Flight/Squadron specific
2	289.4	Nellis Clearance Delivery
3	275.8	Nellis Ground
4	327.0	Nellis Tower
5	385.4	Nellis Approach/Departure West
6	273.55	Nellis Approach/Departure East
7	317.525	Nellis Control -- Sally
8	254.4	Nellis Control-- Lee
9	305.6	SOF Bullseye
10	343.725	EMERGENCY SINGLE FRQ
11	270.1	Nellis ATIS
12	360.625	Creech AFB Tower
13	250.1	HAVE QUICK 13
14	251.1	HAVE QUICK 14
15	252.1	HAVE QUICK 15
16	377.8	Blackjack
17	265.0	KC-135 AR-641A
18	360.8	KC-135MPRS AR-635
19	319.8	KC-135MPRS AR-625
20	300.05	KC-135 AR-231V

RAMROD

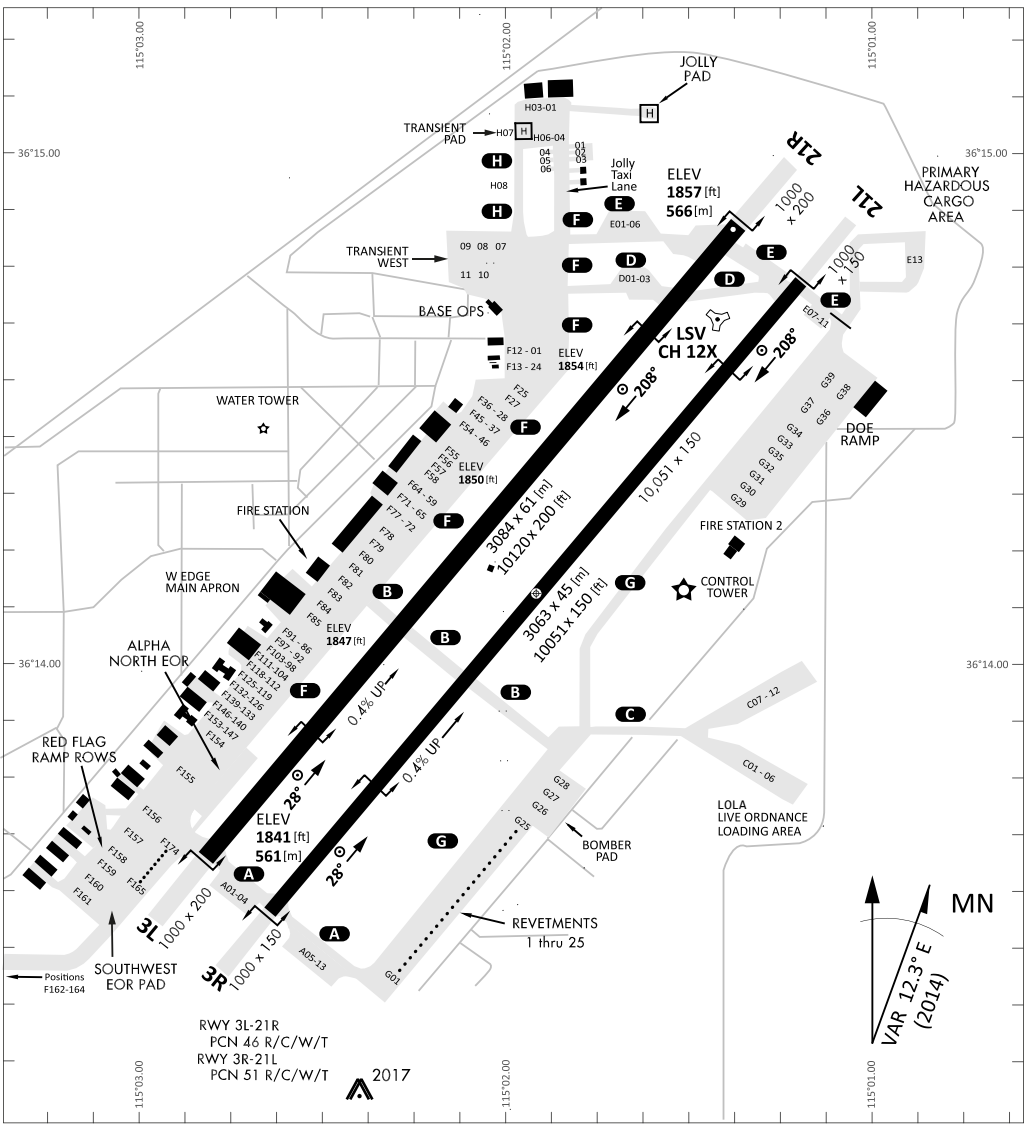
0	1	2	3	4	5	6	7	8	9
C	H	A	R	M	I	N	G	L	Y

KTC 1400 C

	0	1	2	3	4	5	6	7	8	9
A	NLVK	MEQ	TIB	WU	DY	CFH	XP	JO	AG	SR
B	UVJT	AMC	RWN	GQ	HO	DBX	SK	PF	LE	YI
C	XOET	YKU	IGJ	HA	PL	VMC	RD	NF	BS	WQ
D	HIBW	UQY	MND	CP	JT	LAF	GX	OS	ER	VK
E	INHP	MDG	BKX	WA	UV	RJE	TC	YS	FO	LQ
F	TIES	HXP	WOJ	YF	KM	BUL	AV	NR	DG	CQ
G	JUMC	NIL	HFV	TB	EG	KPD	XA	OW	YR	QS
H	GCKH	MOP	YWI	UB	AR	QLS	FD	VT	EN	XJ
I	TGOX	QNS	KLY	UV	CR	WEI	JP	AF	HD	BM
J	MHCW	PEG	JVF	NY	DL	RKX	QS	TI	OB	AU
K	LKAY	END	OWI	VQ	JX	HTS	GP	MR	FC	BU
L	DEMX	ANG	LYQ	UK	SB	HCR	FW	JV	OT	PI
M	IECQ	AXL	HOG	MN	WD	BSJ	FV	KR	UP	YT
N	WEJM	ALH	SYQ	UN	TX	ODI	RV	KF	PB	CG
O	QVSA	YMP	KRU	EI	ON	CTH	DG	XL	FB	JW
P	VADG	QTL	MUB	JF	CW	PKN	RE	HY	OX	IS
Q	KXEB	CUT	NSG	QV	PH	MJD	FR	WL	AO	IY
R	TQNS	PWH	MJK	RV	CF	AID	XB	UG	LE	YO
S	UWVY	EBX	RAK	LJ	HO	CFI	DP	MG	SN	QT
T	NWBK	TOC	XSM	AD	FJ	LIV	EU	QY	HG	RP
U	FTBG	DSU	JYR	QM	XC	LKA	IV	PN	EW	HO
V	XGBW	UFD	TLJ	QA	PM	OCH	SN	VY	RK	IE
W	CLYR	HMW	KQB	PJ	SN	TXF	OG	IU	VD	AE
X	RSCX	DUV	FYG	KH	IM	TEL	WB	JO	NA	QP
Y	VDXC	YBG	PWJ	HE	FL	ROS	IM	UN	AK	QT

NAVAIDS

Id	Name	Channel	Position	Elevation
BCE	Bryce Canyon	75	N3741.35 W11218.23	9040
BIH	Bishop	33	N3722.62 W11821.99	4114
BLD	Boulder	114	N3559.75 W11451.82	3650
BTY	Beatty	94	N3648.54 W11644.86	2925
CDC	Cedar City	120	N3747.24 W11304.90	5463
DAG	Daggett	79	N3457.75 W11634.69	1760
EED	Needles	99	N3445.96 W11428.43	650
GFS	Goffs	91	N3507.87 W11510.59	4019
GRL	Groom Lake	18	N3713.91 W11548.16	4475
HEC	Hector	74	N3447.83 W11627.78	1854
ILC	Wilson Creek	110	N3815.02 W11423.65	9318
INS	Creech AFB	87	N3635.20 W11540.12	3101
LAS	McCarran Intl	116	N3604.78 W11509.59	2142
LSV	Nellis	12	N3614.68 W11501.50	1864
MLF	Milford	58	N3821.62 W11300.79	4977
MMM	Mormon Mesa	90	N3646.16 W11416.65	2120
MVA	Mina	98	N3833.92 W11801.97	7860
OAL	Coale Dale	124	N3800.20 W11746.23	4800
PGS	Peach Springs	57	N3537.48 W11332.67	4754
TPH	Tonopah Muni	119	N3801.84 W11702.01	5330
TQQ	Silverbow	77	N3748.00 W11647.00	5500
UTI	St George	23	N3705.29 W11335.53	2871



RWY 3L-21R
 PCN 46 R/C/W/T
 RWY 3R-21L
 PCN 51 R/C/W/T
 2017

PAR	RWY	CAT	MINIMA		ARP	ELEV	Scale 1:35'500	
	21L	A B D E	2057 - 0.8 200	(200-0.8/1.6) GS 3°	36° 14.060° N 115° 01.058° W	1857 [ft] 566 [m]	0 300 600 900 1200 1500 [m]	
	3R	A B D E	2057 - 0.8 200	(200-0.8/1.6) GS 3°			0 1000 2000 3000 4000 5000 [ft]	
SRA	21R	A C D E	2257 - 1.2 350	(350-1.2/1.6)				
	3L	A C D E	2257 - 1.2 350	(350-1.2/1.6)				

RWY	TORA	TODA	ASDA	LDA	PSN	THR	ALS
21L	10051 [ft] 3063 [m]	11051 [ft] 3368 [m]	11051 [ft] 3368 [m]	10051 [ft] 3063 [m]	36°14.043' N	115°01.018' W	⊕
3R	10120 [ft] 3084 [m]	11120 [ft] 3398 [m]	11120 [ft] 3398 [m]	10120 [ft] 3084 [m]	36°13.029' N	115°02.038' W	

ATIS	NELLIS GROUND	NELLIS TOWER	NELLIS CONTROL	TACAN	ILS RWY 21L	NELLIS EAST	NELLIS WEST
270.100 MHz	275.800 121.800	327.000 132.55	317.525	LSV 12X	109.10 Mhz	384.400	385.000

DREAM FOUR DEPARTURE DREAM4 | VALID 2014

NELLIS AFB (KLSV)
LAS VEGAS, NEVADA

ATIS
270.100
NELLIS GROUND
275.800
NELLIS TOWER
327.000
NELLIS CONTROL
317.525
NELLIS DEP/APP EAST
384.400
BLACKJACK
377.800

DREAM
N3710.34
W11459.53

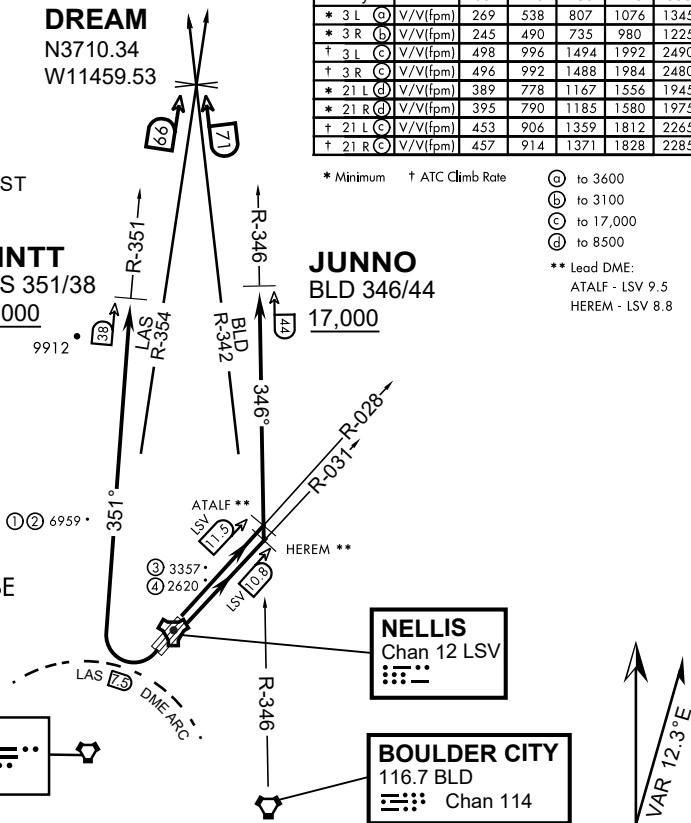
MINTT
LAS 351/38
17,000

Rwy	Knots	60	120	180	240	300	360
* 3 L (A)	V/V(fpm)	269	538	807	1076	1345	1614
* 3 R (B)	V/V(fpm)	245	490	735	980	1225	1470
† 3 L (C)	V/V(fpm)	498	996	1494	1992	2490	2988
† 3 R (C)	V/V(fpm)	496	992	1488	1984	2480	2976
* 21 L (D)	V/V(fpm)	389	778	1167	1556	1945	2334
* 21 R (D)	V/V(fpm)	395	790	1185	1580	1975	2370
† 21 L (C)	V/V(fpm)	453	906	1359	1812	2265	2718
† 21 R (C)	V/V(fpm)	457	914	1371	1828	2285	2742

* Minimum † ATC Climb Rate

- (A) to 3600
 - (B) to 3100
 - (C) to 17,000
 - (D) to 8500
- ** Lead DME:
ATALF - LSV 9.5
HEREM - LSV 8.8

- ① 12.24 NM from Rwy 21R
- ② 12.40 NM from Rwy 21L
- ③ 5.67 NM from Rwy 3L
- ④ 5.85 NM from Rwy 3R



NOT FOR CIVIL USE

CAUTION: If unable to comply with restrictions advise ATC prior to departure.

DEPARTURE ROUTE DESCRIPTION

TAKE-OFF RWY 3L

- Fly runway heading to intercept the LSV TACAN R-028 then direct ATALF, intercept the BLD VORTAC R-346 then direct JUNNO, cross JUNNO at or above 17,000, then via assigned route.

TAKE-OFF RWY 3R

- Fly runway heading to intercept the LSV TACAN R-031 then direct HEREM, intercept the BLD VORTAC R-346 then direct JUNNO, cross JUNNO at or above 17,000, then via assigned route.

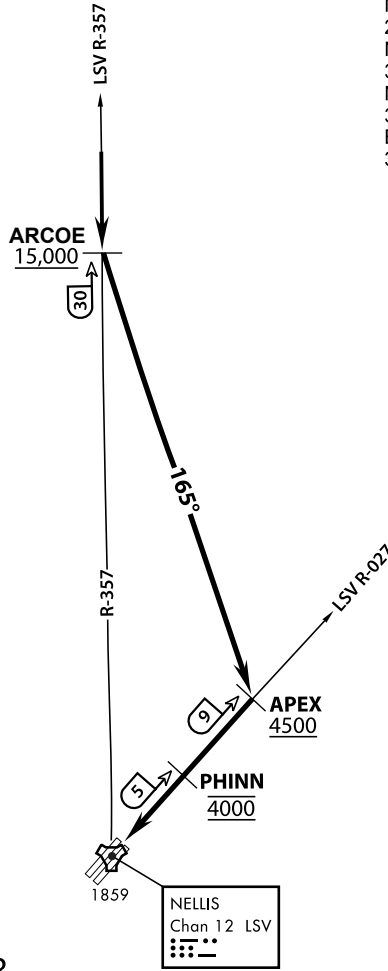
TAKE-OFF RWY 21L/R

- Turn right to intercept LAS VORTAC R-351 outbound. Remain North of LAS 7.5 DME turning Northbound. Intercept LAS R-351 between 5000 and 6000, do not proceed West of LAS R-351. Cross MINTT at or above 17,000, then via assigned route.

NOISE ABATMENT PROCEDURES: Fly acc. Nellis Noise Abatement instructions

DREAM FOUR DEPARTURE (DREAM4 • DREAM)

ATIS
 270.100
 NELLIS GROUND
 275.800
 NELLIS TOWER
 327.000
 NELLIS CONTROL
 317.525
 BLACKJACK
 377.800



VMC ONLY

PILOT RESPONSIBLE FOR
TERRAIN AVOIDANCE

APPROACH ROUTE DESCRIPTION

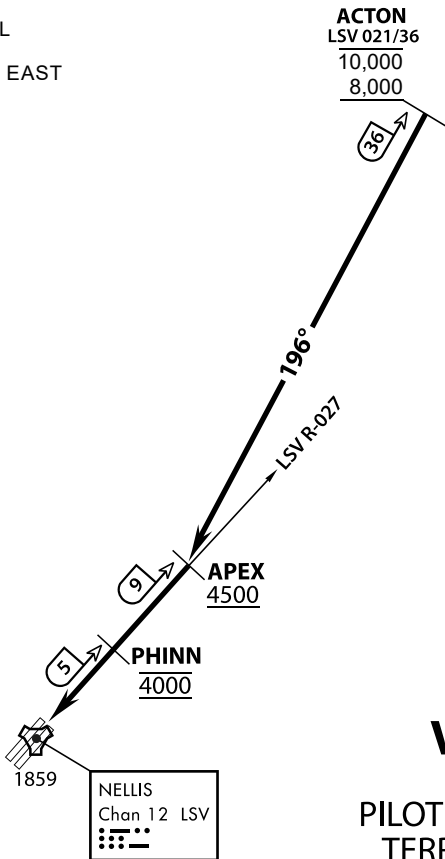
OVERHEAD

Cross ARCOE at or above 15,000 MSL, then heading 165° to APEX.
 Cross APEX at or above 4,500 MSL, report to tower.
 Cross PHINN (LSV 027/5) at 4,000 MSL then descend to 3,500 MSL for Initial.

VFR STRAIGHT IN RWY 21

Cross APEX at 4,000 feet MSL. Descend to be at 3,000 feet MSL at PHINN (LSV 027/5).

ATIS
 270.100
 NELLIS GROUND
 275.800
 NELLIS TOWER
 327.000
 NELLIS CONTROL
 317.525
 NELLIS DEP/APP EAST
 384.400
 BLACKJACK
 377.800



VMC ONLY

**PILOT RESPONSIBLE FOR
TERRAIN AVOIDANCE**

▼ APPROACH ROUTE DESCRIPTION

Depart ACTON between 8,000 and 10,000 MSL heading 196° direct APEX

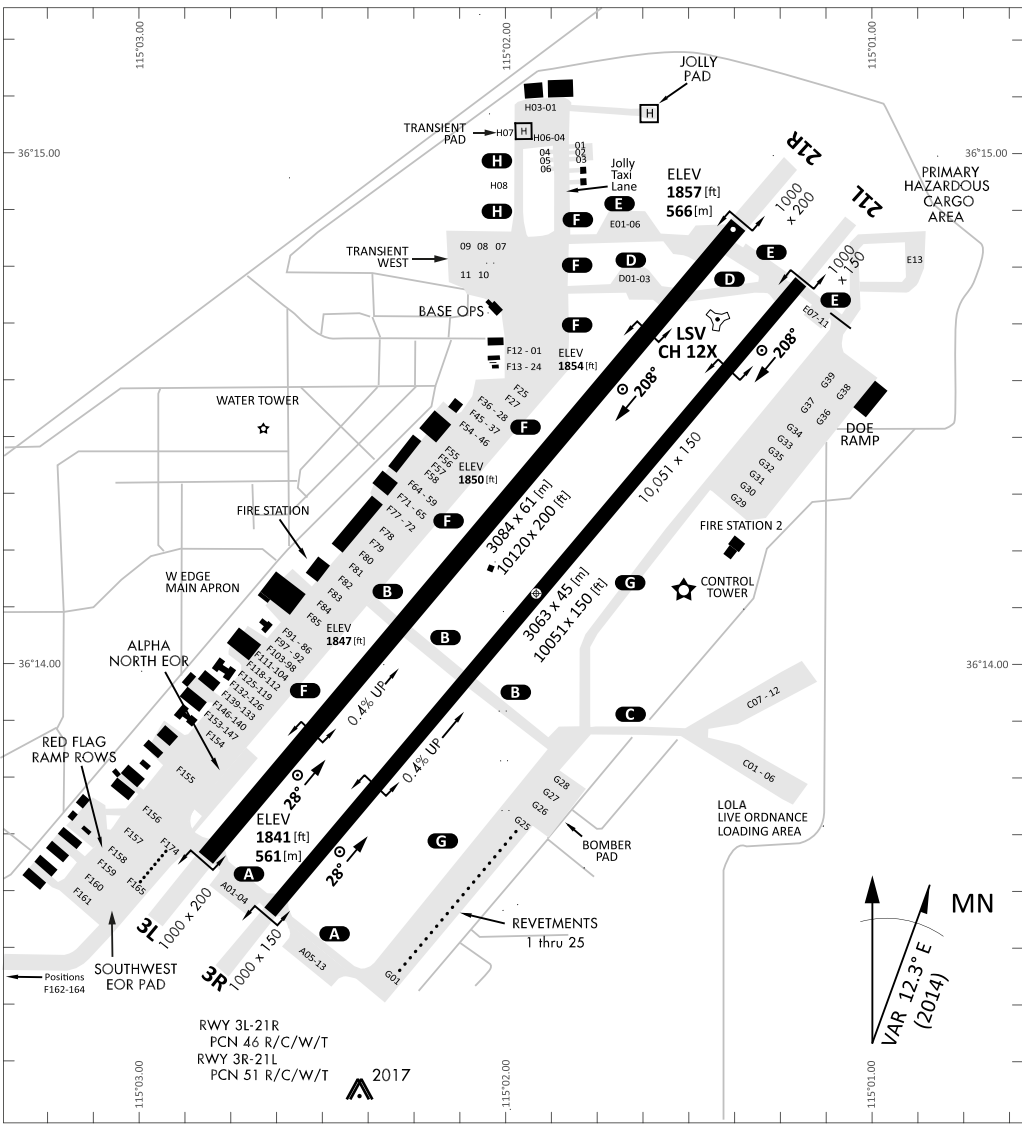
OVERHEAD

Cross APEX at or above 4,500 feet MSL, then direct Initial.
Cross PHINN (LSV 027/5) at 4,000 feet MSL. Descend to 3,500 MSL for Initial.

VFR STRAIGHT IN RWY 21

Cross APEX at 4,000 feet MSL. Descend to be at 3,000 feet MSL at PHINN (LSV 027/5).

NOTE If unable to maintain VMC,
request IFR clearance for radar vectors to instrument approach.



RWY 3L-21R
 PCN 46 R/C/W/T
 RWY 3R-21L
 PCN 51 R/C/W/T
 2017

PAR	RWY	CAT	MINIMA		ARP	ELEV	Scale 1:35'500	
	21L	A B D E	2057 - 0.8 200	(200-0.8/1.6) GS 3°	36° 14.060° N 115° 01.058° W	1857 [ft] 566 [m]	0 300 600 900 1200 1500 [m]	
	3R	A B D E	2057 - 0.8 200	(200-0.8/1.6) GS 3°			0 1000 2000 3000 4000 5000 [ft]	
SRA	21R	A C D E	2257 - 1.2 350	(350-1.2/1.6)				
	3L	A C D E	2257 - 1.2 350	(350-1.2/1.6)				

RWY	TORA	TODA	ASDA	LDA	PSN	THR	ALS
21L	10051 [ft] 3063 [m]	11051 [ft] 3368 [m]	11051 [ft] 3368 [m]	10051 [ft] 3063 [m]	36°14.043' N	115°01.018' W	⊕
3R	10120 [ft] 3084 [m]	11120 [ft] 3398 [m]	11120 [ft] 3398 [m]	10120 [ft] 3084 [m]	36°13.029' N	115°02.038' W	

ATIS	NELLIS GROUND	NELLIS TOWER	NELLIS CONTROL	TACAN	ILS RWY 21L	NELLIS EAST	NELLIS WEST
270.100 MHz	275.800 121.800	327.000 132.55	317.525	LSV 12X	109.10 Mhz	384.400	385.000