

MISSION DATA CARD

OPORD		Callsign		Mission		Date/Time		
3160/2024		Tiger 1		Training		021957SEP24		
Task	Dive Bomb					Freq		
AO	R64					261.15		
Departure				Recovery				
FYTTR LOW				STRYK				
#	Callsign		Pilot		IFF	TCN	LSR	NET
-1	Tiger 1-1		Kosmoss		1011	1Y	1551	
-2	Tiger 1-2		Monte		1012	64Y	1552	
-3	Tiger 1-3		Coach		1013	64X	1553	
-4	Tiger 1-4		Ghost		1014	1X	1554	

LOADOUT

A/A						GUN	
A/G						CHF	
POD						FLR	
TKS						FUEL	

TOLD

	Takeoff	Target	Joker	Bingo	Land
FUEL	10803			3500	

AIRBASES

	Name	TCN	ATIS	GND	TWR	RWY	Elev	ILS
Dep	Nellis AFB	12X	270.1	275.8	327.0	21L	1850	109.1
Arr	Nellis AFB	12X	270.1	275.8	327.0	21L	1850	109.1
Div	Creech AFB	87X	290.45	275.8	360.6			

FLIGHTPLAN

#	Name	Navaid/Coords/DME	ALT	TOT
1	FYTTR	LSV 269/33 (N36 21.440 W115 41.470)	14000	
2	R64 W Circle	INS 354/6 (N36 40.900 W115 40.400)	3022	
3	STRYK	LSV 282/26 (N36 25.620 W115 30.700)	9500	
4	Nellis	N36 14.680 W115 01.500		

OTHER FLIGHTS

Callsign	Mission	Airframe	Freq	TCN	Grpld	Laser
Edelweiss 2	Training	4x AH-64D	133.5	1/64		172X
AO	basic airwork at nellis	Task				
Monster 1	Training	2x A-10C	132.15	1/64	21	161X
AO	S/E OF LAS VEGAS	Task	FORM.-PROC. & CONTRACTS			
Nazgul 6	Training	4x F-15E	262.45	21/84		156X
AO		Task	A/G Delivery			
Raptor 1	Training	4x F-16C	134.0	1/64		162X
AO	R76	Task	High Drag - Bomb Training			
Raptor 1	Training	4x F-16C	134.25	1/64		162X
AO	R	Task	High Drag - Bomb Training			

RADIO CHANNELS

#	Freq	Name
1		Flight/Squadron specific
2	289.4	Nellis Clearance Delivery
3	275.8	Nellis Ground
4	327.0	Nellis Tower
5	385.4	Nellis Approach/Departure West
6	273.55	Nellis Approach/Departure East
7	317.525	Nellis Control -- Sally
8	254.4	Nellis Control-- Lee
9	305.6	SOF Bullseye
10	343.725	EMERGENCY SINGLE FRQ
11	270.1	Nellis ATIS
12	360.625	Creech AFB Tower
13	250.1	HAVE QUICK 13
14	251.1	HAVE QUICK 14
15	252.1	HAVE QUICK 15
16	377.8	Blackjack
17	265.0	KC-135 AR-641A
18	360.8	KC-135MPRS AR-635
19	319.8	KC-135MPRS AR-625
20	300.05	KC-135 AR-231V

RAMROD

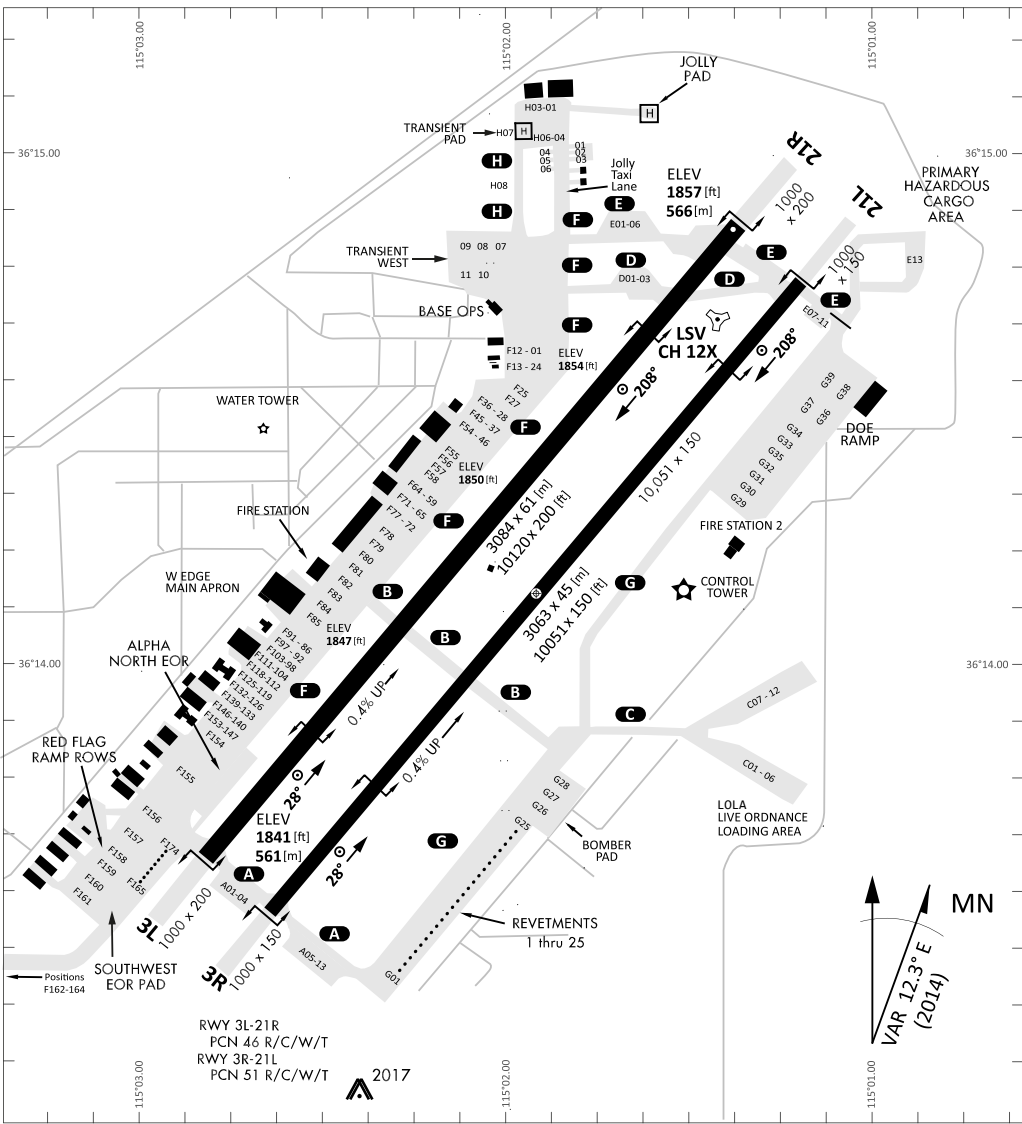
0	1	2	3	4	5	6	7	8	9
D	E	P	I	L	A	T	O	R	Y

KTC 1400 C

	0	1	2	3	4	5	6	7	8	9
A	ASWY	NMO	PFG	DJ	TE	KQX	BR	IU	HC	VL
B	GDUX	IWM	ABK	HQ	VE	NFY	JL	SP	TO	CR
C	YVCA	TJO	MIH	DE	UG	RLN	QW	BK	XP	FS
D	JFTR	CSV	AWI	OP	UE	GDM	BY	KX	QN	LH
E	JCFX	NVK	OPU	YA	GB	HLQ	WE	SI	MR	DT
F	ICPN	AOW	TYH	RS	LK	BXD	FU	QV	EG	JM
G	IXGK	YMN	RVH	AL	FD	OES	TB	JW	UP	QC
H	QDCN	SVT	WOB	YP	LH	UKR	FM	AX	IE	JG
I	HDVI	TRM	XPB	YC	EQ	NLS	AU	FJ	KO	WG
J	HUNJ	XFI	BLR	VC	EK	TQM	YD	PO	SA	WG
K	SKUM	JIT	HRQ	WO	PX	DCN	EY	GV	LA	BF
L	RGYV	DEJ	OTU	IW	AH	KCL	MN	PS	XB	QF
M	HCIN	ORX	TKF	PY	VG	QAE	LJ	MD	WS	UB
N	HGTA	IBW	OLS	MX	RK	QVP	JF	DN	CE	UY
O	SJEY	LVR	WFX	IN	TU	AGB	CH	KQ	PM	OD
P	VJTA	LIK	EMD	CX	BH	WQP	SU	OR	GY	FN
Q	JEUC	FHR	PDM	LV	TO	YXK	WQ	IA	SG	BN
R	WKRL	MEB	PGU	QS	CO	FHI	XD	AJ	VY	TN
S	BLFG	YOH	RTP	VJ	AE	WMK	IQ	XU	CD	NS
T	KHQN	SUW	IMG	RO	PJ	CEF	XY	TB	AV	LD
U	MLYT	NAK	RUH	OQ	IB	EJF	GS	XP	WC	DV
V	PQVJ	NRA	SDG	HK	FY	UTX	WE	IM	CL	OB
W	QKSI	WHV	GMC	XB	DY	TFR	AE	LP	NU	OJ
X	DNBV	QWJ	ULY	XH	IC	MSE	FO	PR	AT	KG
Y	YIQE	NJV	FKS	CB	WM	PDH	GR	XT	AU	LO

NAVAIDS

Id	Name	Channel	Position	Elevation
BCE	Bryce Canyon	75	N3741.35 W11218.23	9040
BIH	Bishop	33	N3722.62 W11821.99	4114
BLD	Boulder	114	N3559.75 W11451.82	3650
BTY	Beatty	94	N3648.54 W11644.86	2925
CDC	Cedar City	120	N3747.24 W11304.90	5463
DAG	Daggett	79	N3457.75 W11634.69	1760
EED	Needles	99	N3445.96 W11428.43	650
GFS	Goffs	91	N3507.87 W11510.59	4019
GRL	Groom Lake	18	N3713.91 W11548.16	4475
HEC	Hector	74	N3447.83 W11627.78	1854
ILC	Wilson Creek	110	N3815.02 W11423.65	9318
INS	Creech AFB	87	N3635.20 W11540.12	3101
LAS	McCarran Intl	116	N3604.78 W11509.59	2142
LSV	Nellis	12	N3614.68 W11501.50	1864
MLF	Milford	58	N3821.62 W11300.79	4977
MMM	Mormon Mesa	90	N3646.16 W11416.65	2120
MVA	Mina	98	N3833.92 W11801.97	7860
OAL	Coale Dale	124	N3800.20 W11746.23	4800
PGS	Peach Springs	57	N3537.48 W11332.67	4754
TPH	Tonopah Muni	119	N3801.84 W11702.01	5330
TQQ	Silverbow	77	N3748.00 W11647.00	5500
UTI	St George	23	N3705.29 W11335.53	2871



RWY 3L-21R
PCN 46 R/C/W/T
RWY 3R-21L
PCN 51 R/C/W/T



PAR	RWY	CAT	MINIMA		ARP	ELEV	Scale 1:35'500	
	21L	A B D E	2057 - 0.8 200 (200-0.8/1.6)	GS 3°	36° 14.060° N 115° 01.058° W	1857 [ft] 566 [m]	0 300 600 900 1200 1500 [m]	
	3R	A B D E	2057 - 0.8 200 (200-0.8/1.6)	GS 3°			0 1000 2000 3000 4000 5000 [ft]	
SRA	21R	A C D E	2257 - 1.2 350 (350-1.2/1.6)					
	3L	A C D E	2257 - 1.2 350 (350-1.2/1.6)					

RWY	TORA	TODA	ASDA	LDA	PSN	THR	ALS
21L	10051 [ft] 3063 [m]	11051 [ft] 3368 [m]	11051 [ft] 3368 [m]	10051 [ft] 3063 [m]	36°14.043' N	115°01.018' W	⊕
3R	10120 [ft] 3084 [m]	11120 [ft] 3398 [m]	11120 [ft] 3398 [m]	10120 [ft] 3084 [m]	36°13.029' N	115°02.038' W	

ATIS	NELLIS GROUND	NELLIS TOWER	NELLIS CONTROL	TACAN	ILS RWY 21L	NELLIS EAST	NELLIS WEST
270.100 MHz	275.800 121.800	327.000 132.55	317.525	LSV 12X	109.10 Mhz	384.400	385.000

FYTTR LOW VISUAL OPERATION CHART | VALID 2014

ATIS
270.100
NELLIS GROUND
275.800
NELLIS TOWER
327.000
NELLIS CONTROL
317.525
NELLIS DEP/APP EAST
384.400
BLACKJACK
377.800

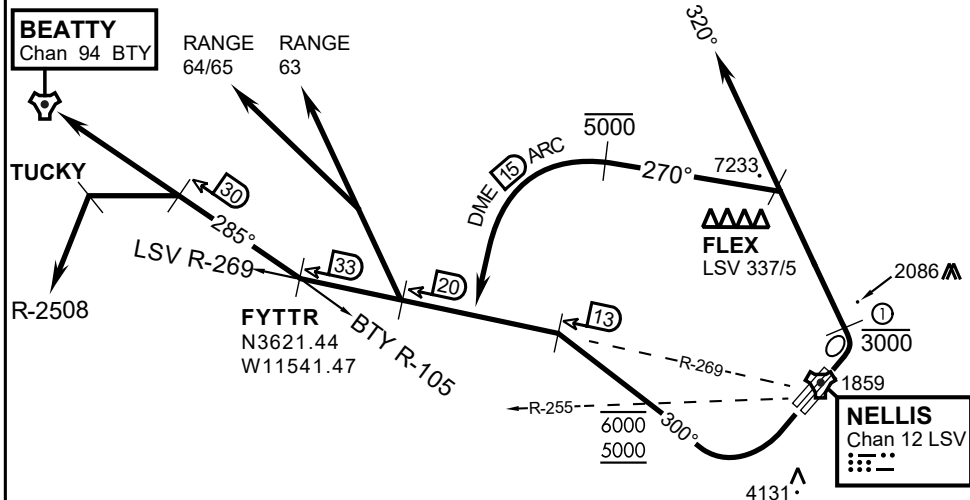
CAUTION: If unable to comply with restrictions advise ATC prior to departure.



VMC ONLY

PILOT RESPONSIBLE FOR TERRAIN AVOIDANCE

① 4 NM from RWY 3L/R



DEPARTURE ROUTE DESCRIPTION

TAKEOFF RWY 3L/R:

- Remain below 3,000' MSL until north of Race Track and turned westbound.
- Turn left within 4NM of Nellis direct FLEX. Fly north of FLEX and turn left heading 270°.
- Intercept LSV 15 DME ARC at or below 5,000' MSL.
- ARC south, intercept LSV R-269 outbound. Maintain VFR.

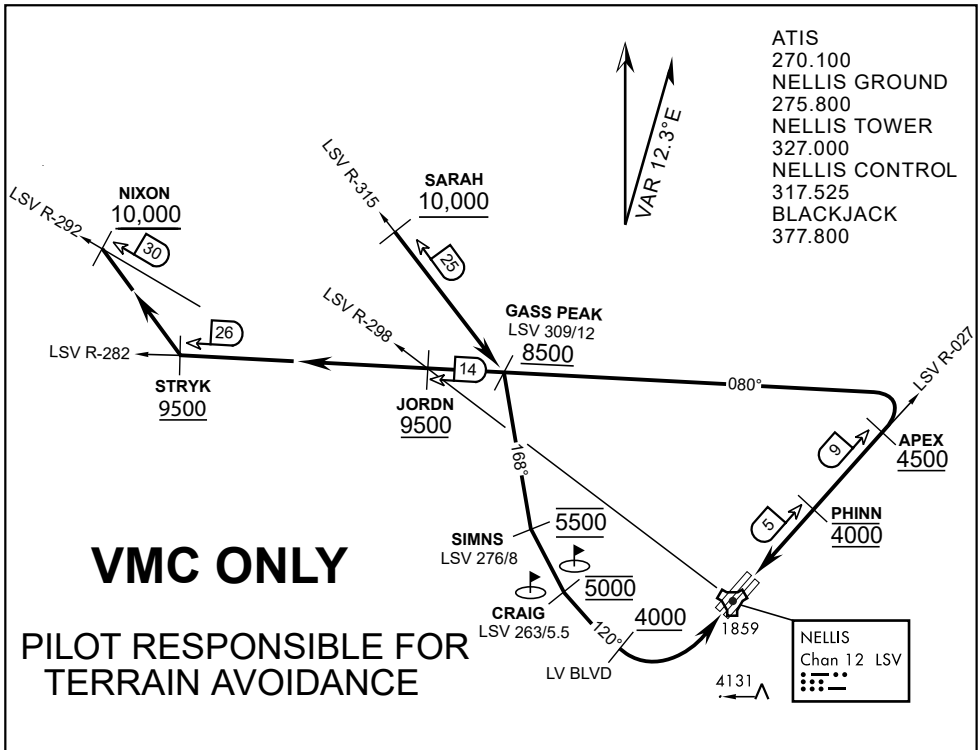
TAKEOFF RWY 21L/21R:

- Follow Noise Abatement Procedures.
- Fly runway heading until past Golf Course, turn right heading 300°.
- Cross LSV R-255 between 5,000' and 6,000' , intercept and proceed outbound on the LSV R-269.Recommend climb to 8,500' MSL or appropriate VFR altitude for overflight of North Las Vegas Training Area. Fly routing for appr. mission/transition.

TRANSITIONS:

- R-4806:** Turn right at the LSV 269/20 direct to assigned ranges.
- BEATTY:** Turn right at FYTTR direct BTY via the BTY R-105
- R-2508:** Turn right at the FYTTR, intercept the BTY 105/30, direct TUCKY, then direct R-2508

FYTTR DEPARTURE AND TRANSITIONS (FYTTR LOW)



APPROACH ROUTE DESCRIPTION

APPROACH RWY 3L/R

Cross STRYK at or above 9,500' MSL, proceed direct GASS PEAK. Cross JORDN at or above 9,500' MSL, cross GASS PEAK at or above 8,500' MSL. Proceed direct SIMNS and cross at 5,500' MSL. Cross Las Vegas Blvd at or above 4,000' MSL then to 3,500' MSL for Initial. Remain within 4 DME if LSV on turn to final.

VFR STRAIGHT-IN RWY 3L/R

Depart CRAIG & descend to be at 3,000' MSL by Las Vegas Blvd. Do not descend below 3,000' MSL until within 5 DME of LSV or 4 NM of the runway on turn to final.

APPROACH RWY 21L/R

Cross STRYK at or above 9,500' MSL, proceed direct GASS PEAK. Cross JORDN at or above 9,500' MSL, cross GASS PEAK at or above 8,500' MSL. Cross APEX at or above 4,500' MSL then direct 5NM initial. Descend to cross PHINN at 4,000' MSL, Inside 5 NM descend to 3,500' MSL.

VFR STRAIGHT-IN RWY 21L/R

Cross APEX at 4,000' MSL. Descend to be at 3,000' MSL at PHINN. Descend to 3,000' MSL at LSV 027/5.

RANGE 63B EXIT

SOUTH: Via NIXON at or above 10,000' MSL, then direct STRYK.
EAST: Via SARAH at or above 10,000' MSL, then direct GASS PEAK.



INDIAN SPRINGS, NEVADA

TACAN INS Chan 87	APCH CRS 065°	Rwy ldg TDZE 3133	9002 3113
		Arpt Elev 3113	

INDIAN SPRINGS AF AUX (KINS)

▼ * MISSED APPROACH: Straight ahead to INS TACAN, intercept INS R-outbound, cross 17 DME at or above 9500, then direkt KSV TACAN 114

NELLIS CON

CREECH AFB TOWER
118.30 60.60

GND CON

NOT FOR CIVIL USE

FOR USE UNDER BASIC VFR
WEATHER MINIMUMS ONLY

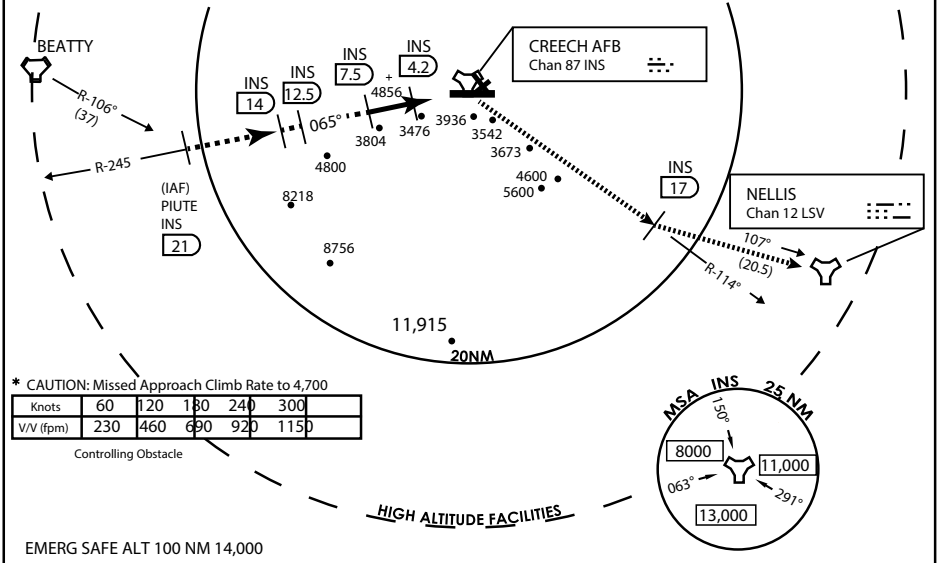
PILOT IS RESPONSIBLE FOR TERRAIN/OBSTACLE AVOIDANCE AND APPROPRIATE VFR CLOUD CLEARANCE FOR ALL

CAUTION: Descent gradients are greater than allowed under standard TERPS criteria and inbound course does not meet straight-in criteria

CAUTION: Final approach course crosses Runway centerline at MIDFIELD. Maneuvering left of course required prior to landing. Do not Maneuver farther north than the INS R- 258

Modified by viaBog 66 for use with DCS
NOT FOR REAL LIFE NAVIGATION

Modified by viaBog 66 for use with DCS
NOT FOR REAL LIFE NAVIGATION



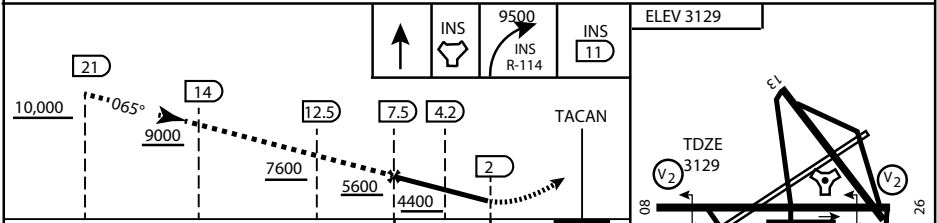
* CAUTION: Missed Approach Climb Rate to 4,700

Knots	60	120	180	240	300
V/V (fpm)	230	460	690	920	1150

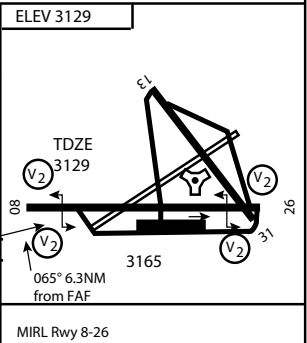
Controlling Obstacle

HIGH ALTITUDE FACILITIES

EMERG SAFE ALT 100 NM 14,000



CATEGORY	A	B	C	D	E
S-8	3760-1 1/2	627 (700-1 1/2)	3760-1 3/4 627 (700-1 3/4)	3760-2 627 (700-2)	3760-2 1/4 627 (700-2 1/4)
CIRCLING	NOT AUTHORIZED				



MIRL Rwy 8-26

CITY OF INDIAN, NEVADA

INDIAN SPRINGS AF AUX (KINS)

(FOR DAY VFR USE ONLY)



AIRPORT DIAGRAM

ATIS
122.5
CREECH TOWER
118.4 360.7 38.65
GND CON
118.3 275.8
CLNC DEL

115°42'W

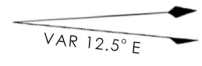
FIELD
ELEV
3127

80

972 X 150

HOT
CARGO
PAD

BAK-12



WEST
EOR

115°41'W

476 vFG JAN 2019

CONTROL
TOWER
BASE
OPS

RPA LOLA
WEST

RPA LOLA
EAST

LOLA /
HUNG
ORDNANCE

199 X 100
ELEV
3127
RUNWAY
31/13
MQ/RQ-1
ONLY

9002 X 150

258.5°

860 X 100

313.8°

4064 X 100

115°40'W

476 vFG JAN 2019

BAK-12

ELEV
3127

EAST
EOR

1030 X 150

26

AIRPORT DIAGRAM