

MISSION DATA CARD

OPORD		Callsign		Mission		Date/Time		
3158/2024		Nazgul 6		Training		022000SEP24		
Task	A/G Delivery					Freq		
AO						262.45		
Departure				Recovery				
FYTTR LOW				STRYK				
#	Callsign		Pilot		IFF	TCN	LSR	NET
-1	Nazgul 6-1		Razorback/UTA		1161	21Y	1561	

LOADOUT

A/A	2xA120C, 2xA9M				GUN	100% SAPHEI	
A/G	4xG54, 2xG12				CHF	240	
POD	TGT, NAV				FLR	0	
TKS	FT610				FUEL	100%	

TOLD

	Takeoff	Target	Joker	Bingo	Land
FUEL	26553		6000	4000	

AIRBASES

	Name	TCN	ATIS	GND	TWR	RWY	Elev	ILS
Dep	Nellis AFB	12X	270.1	275.8	327.0	21L	1850	109.1
Arr	Nellis AFB	12X	270.1	275.8	327.0	21L	1850	109.1
Div	Nellis AFB	12X	270.1	275.8	327.0	21L	1850	109.1

FLIGHTPLAN

#	Name	Navaid/Coords/DME	ALT	TOT
1	FYTTR	LSV 269/33 (N36 21.440 W115 41.470)		
2	NIXON	LSV 292/30 (N36 32.010 W115 32.250)		
3	IP	N36 30.500 W115 40.800	20000	
4	Range 63B Tower	N36 37.034 W115 30.266	3043	
5	STRYK	LSV 282/26 (N36 25.620 W115 30.700)		

COMMS

Radio	Usage
1	262.450
2	3, 4, 16, 4, 3

NOTES

FYTR LOW Departure
NIXON

Bombs Training R63B on Bomb Circles - Bomb Pattern - evtl Budy
Lasing

run in al 2/3 ship trail 1nm

#1 1xGBU12 - hit both bomb circles with whole flight

#2 1xGBU54 on W-bomb circle and 1x GBU54 on E-bomb circle

#3 have fun with spare ordonance (moving targets on R63B?)

AAR Pegasus 1 (~60nm NE) -> ARCOE REC

STRYK Recovery

SUPPORT**Tanker**

Callsign	TCN	Freq	ALT	TAS
TEXACO 2	95Y	289.7	FL220	420
	Pos	Pegasus.1: CDC 166/102 (N3730 W11440)		
TEXACO 1	94Y	265.0	17000	290
	Pos	AR-641A: CDC 242/78 (N3728 W11439)		
TEXACO 3	22Y	300.05	15000	280
	Pos	AR-231V: BTY 126/37 (N3620 W11614)		

AWACS

Callsign	Freq	ALT	Pos
MAGIC	377.8	FL270	N3749 W11417 - N3713 W11446

OTHER FLIGHTS

Callsign	Mission	Airframe	Freq	TCN	Grpld	Laser
Edelweiss 2	Training	4x AH-64D	133.5	1/64		172X
AO	basic airwork at nellis	Task				
Monster 1	Training	2x A-10C	132.15	1/64	21	161X
AO	S/E OF LAS VEGAS	Task	FORM.-PROC. & CONTRACTS			
Raptor 1	Training	4x F-16C	134.0	1/64		162X
AO	R76	Task	High Drag - Bomb Training			
Tiger 1	Training	4x F/A-18C	261.15	1/64		155X
AO	R64	Task	Dive Bomb			
Raptor 1	Training	4x F-16C	134.25	1/64		162X
AO	R	Task	High Drag - Bomb Training			

RADIO CHANNELS

#	Freq	Name
1		Flight/Squadron specific
2	289.4	Nellis Clearance Delivery
3	275.8	Nellis Ground
4	327.0	Nellis Tower
5	385.4	Nellis Approach/Departure West
6	273.55	Nellis Approach/Departure East
7	317.525	Nellis Control -- Sally
8	254.4	Nellis Control-- Lee
9	305.6	SOF Bullseye
10	343.725	EMERGENCY SINGLE FRQ
11	270.1	Nellis ATIS
12	360.625	Creech AFB Tower
13	250.1	HAVE QUICK 13
14	251.1	HAVE QUICK 14
15	252.1	HAVE QUICK 15
16	377.8	Blackjack
17	265.0	KC-135 AR-641A
18	360.8	KC-135MPRS AR-635
19	319.8	KC-135MPRS AR-625
20	300.05	KC-135 AR-231V

RAMROD

0	1	2	3	4	5	6	7	8	9
D	E	P	I	L	A	T	O	R	Y

KTC 1400 C

	0	1	2	3	4	5	6	7	8	9
A	ASWY	NMO	PFG	DJ	TE	KQX	BR	IU	HC	VL
B	GDUX	IWM	ABK	HQ	VE	NFY	JL	SP	TO	CR
C	YVCA	TJO	MIH	DE	UG	RLN	QW	BK	XP	FS
D	JFTR	CSV	AWI	OP	UE	GDM	BY	KX	QN	LH
E	JCFX	NVK	OPU	YA	GB	HLQ	WE	SI	MR	DT
F	ICPN	AOW	TYH	RS	LK	BXD	FU	QV	EG	JM
G	IXGK	YMN	RVH	AL	FD	OES	TB	JW	UP	QC
H	QDCN	SVT	WOB	YP	LH	UKR	FM	AX	IE	JG
I	HDVI	TRM	XPB	YC	EQ	NLS	AU	FJ	KO	WG
J	HUNJ	XFI	BLR	VC	EK	TQM	YD	PO	SA	WG
K	SKUM	JIT	HRQ	WO	PX	DCN	EY	GV	LA	BF
L	RGYV	DEJ	OTU	IW	AH	KCL	MN	PS	XB	QF
M	HCIN	ORX	TKF	PY	VG	QAE	LJ	MD	WS	UB
N	HGTA	IBW	OLS	MX	RK	QVP	JF	DN	CE	UY
O	SJEY	LVR	WFX	IN	TU	AGB	CH	KQ	PM	OD
P	VJTA	LIK	EMD	CX	BH	WQP	SU	OR	GY	FN
Q	JEUC	FHR	PDM	LV	TO	YXK	WQ	IA	SG	BN
R	WKRL	MEB	PGU	QS	CO	FHI	XD	AJ	VY	TN
S	BLFG	YOH	RTP	VJ	AE	WMK	IQ	XU	CD	NS
T	KHQN	SUW	IMG	RO	PJ	CEF	XY	TB	AV	LD
U	MLYT	NAK	RUH	OQ	IB	EJF	GS	XP	WC	DV
V	PQVJ	NRA	SDG	HK	FY	UTX	WE	IM	CL	OB
W	QKSI	WHV	GMC	XB	DY	TFR	AE	LP	NU	OJ
X	DNBV	QWJ	ULY	XH	IC	MSE	FO	PR	AT	KG
Y	YIQE	NJV	FKS	CB	WM	PDH	GR	XT	AU	LO

NAVAIDS

Id	Name	Channel	Position	Elevation
BCE	Bryce Canyon	75	N3741.35 W11218.23	9040
BIH	Bishop	33	N3722.62 W11821.99	4114
BLD	Boulder	114	N3559.75 W11451.82	3650
BTY	Beatty	94	N3648.54 W11644.86	2925
CDC	Cedar City	120	N3747.24 W11304.90	5463
DAG	Daggett	79	N3457.75 W11634.69	1760
EED	Needles	99	N3445.96 W11428.43	650
GFS	Goffs	91	N3507.87 W11510.59	4019
GRL	Groom Lake	18	N3713.91 W11548.16	4475
HEC	Hector	74	N3447.83 W11627.78	1854
ILC	Wilson Creek	110	N3815.02 W11423.65	9318
INS	Creech AFB	87	N3635.20 W11540.12	3101
LAS	McCarran Intl	116	N3604.78 W11509.59	2142
LSV	Nellis	12	N3614.68 W11501.50	1864
MLF	Milford	58	N3821.62 W11300.79	4977
MMM	Mormon Mesa	90	N3646.16 W11416.65	2120
MVA	Mina	98	N3833.92 W11801.97	7860
OAL	Coale Dale	124	N3800.20 W11746.23	4800
PGS	Peach Springs	57	N3537.48 W11332.67	4754
TPH	Tonopah Muni	119	N3801.84 W11702.01	5330
TQQ	Silverbow	77	N3748.00 W11647.00	5500
UTI	St George	23	N3705.29 W11335.53	2871



PAR	RWY	CAT	MINIMA	ARP	ELEV	Scale 1:35'500
	21L	A B D E	2057 - 0.8 200 (200-0.8/1.6) GS 3°	36° 14.060° N 115° 01.058° W	1857 [ft] 566 [m]	0 300 600 900 1200 1500 [m]
	3R	A B D E	2057 - 0.8 200 (200-0.8/1.6) GS 3°			0 1000 2000 3000 4000 5000 [ft]
SRA	21R	A C D E	2257 - 1.2 350 (350-1.2/1.6)			
	3L	A C D E	2257 - 1.2 350 (350-1.2/1.6)			

RWY	TORA	TODA	ASDA	LDA	PSN	THR	ALS
21L	10051 [ft] 3063 [m]	11051 [ft] 3368 [m]	11051 [ft] 3368 [m]	10051 [ft] 3063 [m]	36°14.043' N	115°01.018' W	⊕
3R	10120 [ft] 3084 [m]	11120 [ft] 3398 [m]	11120 [ft] 3398 [m]	10120 [ft] 3084 [m]	36°13.029' N	115°02.038' W	

ATIS	NELLIS GROUND	NELLIS TOWER	NELLIS CONTROL	TACAN	ILS RWY 21L	NELLIS EAST	NELLIS WEST
270.100 MHz	275.800 121.800	327.000 132.55	317.525	LSV 12X	109.10 Mhz	384.400	385.000

FYTTR LOW VISUAL OPERATION CHART | VALID 2014

ATIS
 270.100
 NELLIS GROUND
 275.800
 NELLIS TOWER
 327.000
 NELLIS CONTROL
 317.525
 NELLIS DEP/APP EAST
 384.400
 BLACKJACK
 377.800

CAUTION: If unable to comply with restrictions advise ATC prior to departure.



VMC ONLY

PILOT RESPONSIBLE FOR TERRAIN AVOIDANCE

① 4 NM from RWY 3L/R

BEATTY
Chan 94 BTY

RANGE 64/65
RANGE 63

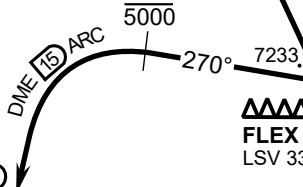
TUCKY

R-2508

LSV R-269
285°

FYTTR
N3621.44
W11541.47

BTY R-105
20°



FLEX
LSV 337/5

2086 M

①

3000

NELLIS
Chan 12 LSV

1859

4131

v.186502 NITRR NAV CHART

DEPARTURE ROUTE DESCRIPTION

TAKEOFF RWY 3L/R:

- Remain below 3,000' MSL until north of Race Track and turned westbound.
- Turn left within 4NM of Nellis direct FLEX. Fly north of FLEX and turn left heading 270°.
- Intercept LSV 15 DME ARC at or below 5,000' MSL.
- ARC south, intercept LSV R-269 outbound. Maintain VFR.

TAKEOFF RWY 21L/21R:

- Follow Noise Abatement Procedures.
- Fly runway heading until past Golf Course, turn right heading 300°.
- Cross LSV R-255 between 5,000' and 6,000', intercept and proceed outbound on the LSV R-269. Recommend climb to 8,500' MSL or appropriate VFR altitude for overflight of North Las Vegas Training Area. Fly routing for appr. mission/transition.

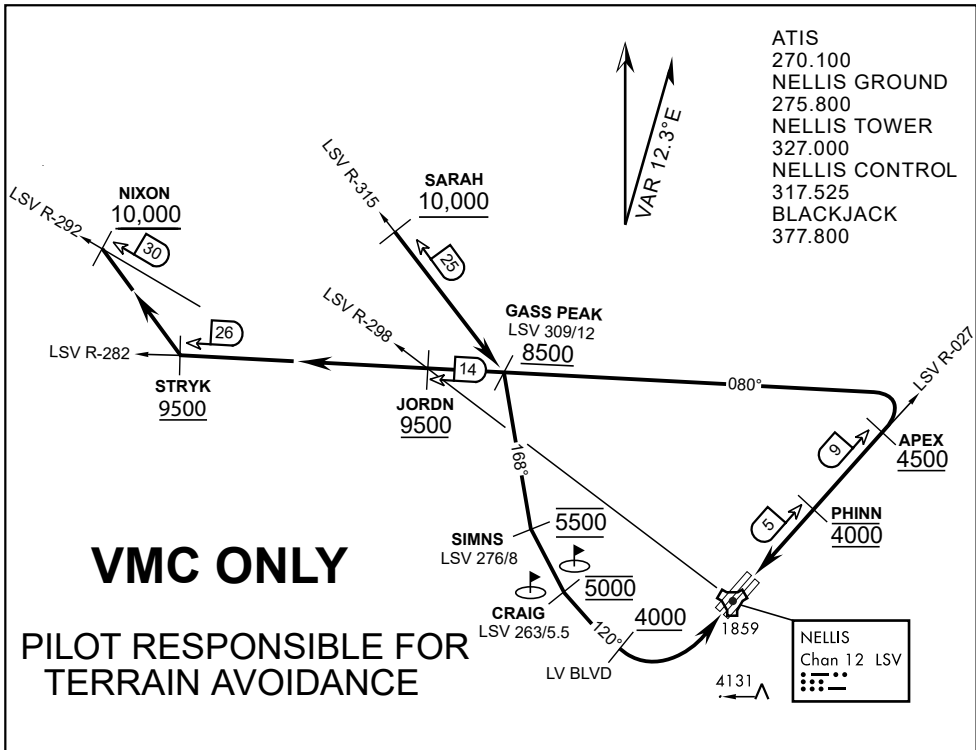
TRANSITIONS:

R-4806: Turn right at the LSV 269/20 direct to assigned ranges.

BEATTY: Turn right at FYTTR direct BTY via the BTY R-105

R-2508: Turn right at the FYTTR, intercept the BTY 105/30, direct TUCKY, then direct R-2508

FYTTR DEPARTURE AND TRANSITIONS (FYTTR LOW)



APPROACH ROUTE DESCRIPTION

APPROACH RWY 3L/R

Cross STRYK at or above 9,500' MSL, proceed direct GASS PEAK. Cross JORDN at or above 9,500' MSL, cross GASS PEAK at or above 8,500' MSL. Proceed direct SIMNS and cross at 5,500' MSL. Cross Las Vegas Blvd at or above 4,000' MSL then to 3,500' MSL for Initial. Remain within 4 DME if LSV on turn to final.

VFR STRAIGHT-IN RWY 3L/R

Depart CRAIG & descend to be at 3,000' MSL by Las Vegas Blvd. Do not descend below 3,000' MSL until within 5 DME of LSV or 4 NM of the runway on turn to final.

APPROACH RWY 21L/R

Cross STRYK at or above 9,500' MSL, proceed direct GASS PEAK. Cross JORDN at or above 9,500' MSL, cross GASS PEAK at or above 8,500' MSL. Cross APEX at or above 4,500' MSL then direct 5NM initial. Descend to cross PHINN at 4,000' MSL, Inside 5 NM descend to 3,500' MSL.

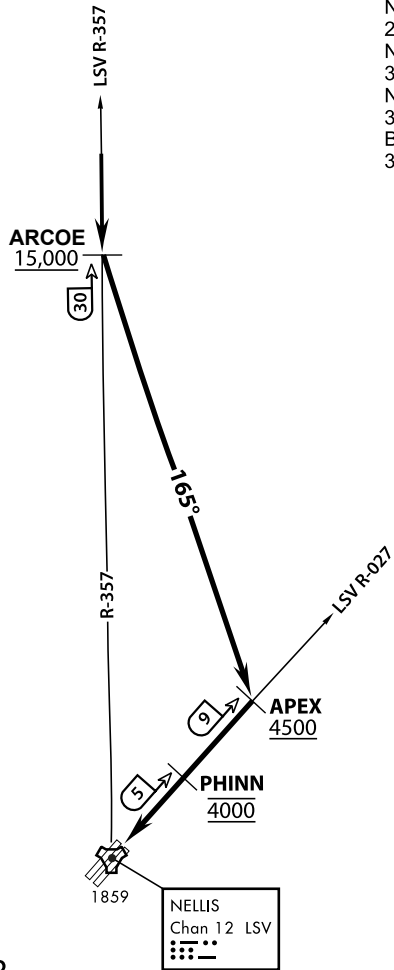
VFR STRAIGHT-IN RWY 21L/R

Cross APEX at 4,000' MSL. Descend to be at 3,000' MSL at PHINN. Descend to 3,000' MSL at LSV 027/5.

RANGE 63B EXIT

SOUTH: Via NIXON at or above 10,000' MSL, then direct STRYK.
EAST: Via SARAH at or above 10,000' MSL, then direct GASS PEAK.

ATIS
 270.100
 NELLIS GROUND
 275.800
 NELLIS TOWER
 327.000
 NELLIS CONTROL
 317.525
 BLACKJACK
 377.800



VMC ONLY

PILOT RESPONSIBLE FOR
TERRAIN AVOIDANCE



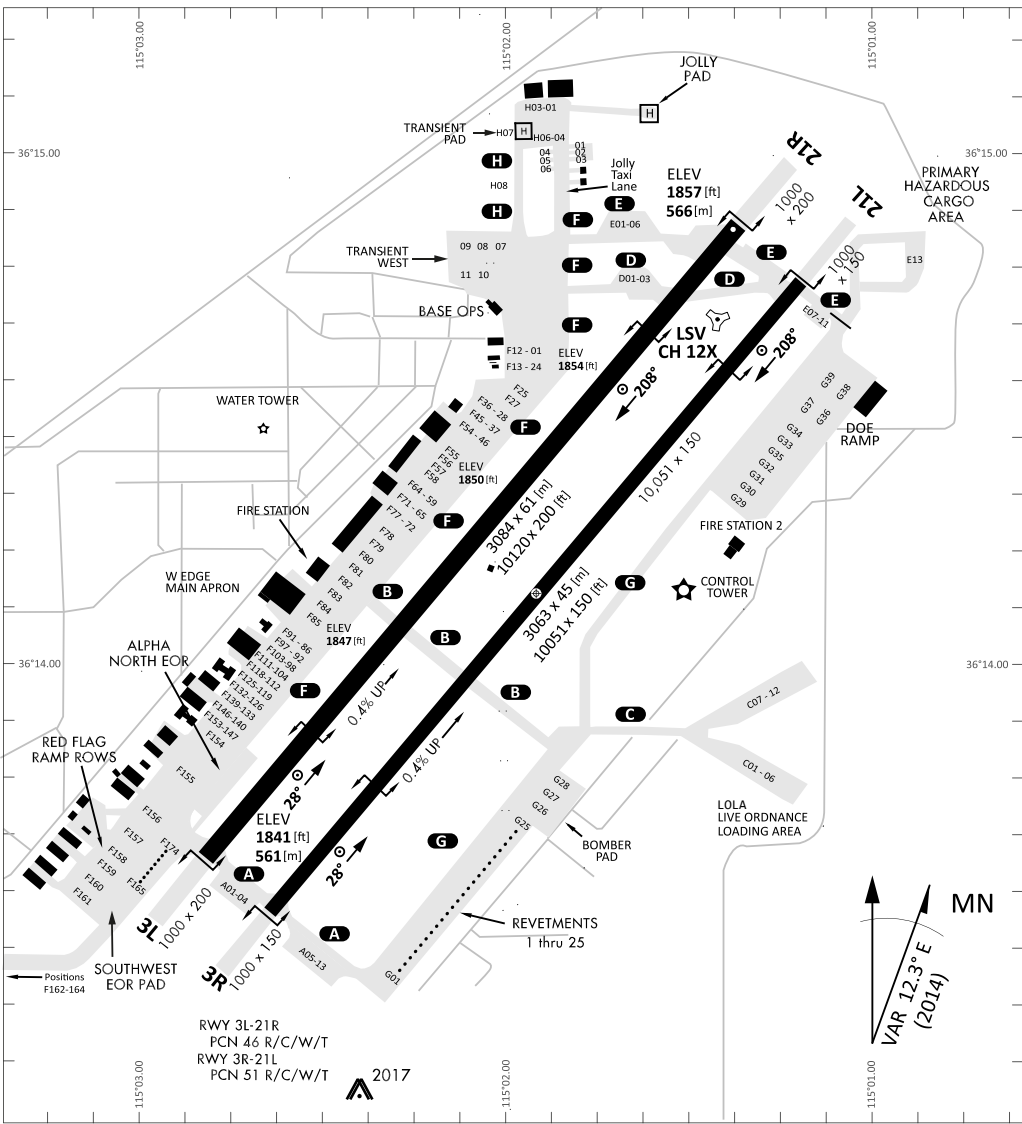
APPROACH ROUTE DESCRIPTION

OVERHEAD

Cross ARCOE at or above 15,000 MSL, then heading 165° to APEX.
 Cross APEX at or above 4,500 MSL, report to tower.
 Cross PHINN (LSV 027/5) at 4,000 MSL then descend to 3,500 MSL for Initial.

VFR STRAIGHT IN RWY 21

Cross APEX at 4,000 feet MSL. Descend to be at 3,000 feet MSL at PHINN (LSV 027/5).



RWY 3L-21R
 PCN 46 R/C/W/T
 RWY 3R-21L
 PCN 51 R/C/W/T
 2017

PAR	RWY	CAT	MINIMA		ARP	ELEV	Scale 1:35'500 0 300 600 900 1200 1500 [m] 0 1000 2000 3000 4000 5000 [ft]
	21L	A B D E	2057 - 0.8 200 (200-0.8/1.6)	GS 3°	36° 14.060° N	1857 [ft]	
	3R	A B D E	2057 - 0.8 200 (200-0.8/1.6)	GS 3°	115° 01.058° W	566 [m]	
SRA	21R	A C D E	2257 - 1.2 350 (350-1.2/1.6)				
	3L	A C D E	2257 - 1.2 350 (350-1.2/1.6)				

RWY	TORA	TODA	ASDA	LDA	PSN	THR	ALS
21L	10051 [ft] 3063 [m]	11051 [ft] 3368 [m]	11051 [ft] 3368 [m]	10051 [ft] 3063 [m]	36°14.043' N	115°01.018' W	⊕
3R	10120 [ft] 3084 [m]	11120 [ft] 3398 [m]	11120 [ft] 3398 [m]	10120 [ft] 3084 [m]	36°13.029' N	115°02.038' W	

ATIS	NELLIS GROUND	NELLIS TOWER	NELLIS CONTROL	TACAN	ILS RWY 21L	NELLIS EAST	NELLIS WEST
270.100 MHz	275.800 121.800	327.000 132.55	317.525	LSV 12X	109.10 Mhz	384.400	385.000