

MISSION DATA CARD

OPORD		Callsign		Mission		Date/Time		
3157/2024		Monster 1		Training		022000SEP24		
Task	FORM.-PROC. & CONTRACTS					Freq		
AO	S/E OF LAS VEGAS					132.15		
Departure				Recovery				
MORMON MESA FOUR				ARCOE				
#	Callsign		Pilot		IFF	TCN	LSR	NET
-1	Monster 1-1		addiks		1411	1Y	1611	21/01
-2	Monster 1-2		Stoner		1412	64Y	1612	21/02

LOADOUT

A/A	A9L				GUN	100% CM	
A/G	7M156				CHF	120	
POD	A184, TGP				FLR	360	
TKS					FUEL	80%	

TOLD

	Takeoff	Target	Joker	Bingo	Land
FUEL	8869				

AIRBASES

	Name	TCN	ATIS	GND	TWR	RWY	Elev	ILS
Dep	Nellis AFB	12X	270.1	275.8	327.0	21L	1850	109.1
Arr	Nellis AFB	12X	270.1	275.8	327.0	21L	1850	109.1
Div	Creech AFB	87X	290.45	275.8	360.6			

FLIGHTPLAN

#	Name	Navaid/Coords/DME	ALT	TOT
1	Mormon Mesa	N36 46.160 W114 16.650	19000	
2	CHOWW	N36 23.431 W114 13.465	16000	
3	KADDY	N35 44.327 W114 23.070	16000	
4	CUTAD	N35 29.242 W114 42.700	16000	
5	TEXACO-2	N37 30 W114 40	22000	
6	ARCOE	LSV 357/30 (N36 44.260 W114 55.020)	15000	
7	APEX	LSV 027/09 (N36 21.580 W114 54.340)	4500	
8	PHINN	N36 18.427 W114 57.408	4000	
9	Nellis	N36 14.680 W115 01.500		

COMMS

Radio	Usage
1	132.15
2	11 - 3 - 4 - 16 - 11 - 4 - 3

NOTES

- Interval Takeoff

Rejoins:

- Departure Rejoin
- Lost Wingman
- Turning Rejoin

Formations:

- Close Formation
- Route Formation
- Finger 4
- Echelon Formation
- Fighting Wing
- Trail Formation

Approach & Landing:

- Overhead Break
- Instrument Trail Recovery
- Split to Land
- Low Approach

Funken:

- Frequenzwechsel
- Ops Check
- Knock-it-Off & Terminate

A/A-Refuel falls danach noch Zeit und Lust da ist. (289.7 | 95Y)

SUPPORT**Tanker**

Callsign	TCN	Freq	ALT	TAS
TEXACO 2	95Y	289.7	FL220	420
Pos	Pegasus.1: CDC 166/102 (N3730 W11440)			

OTHER FLIGHTS

Callsign	Mission	Airframe	Freq	TCN	Grpld	Laser
Edelweiss 2	Training	4x AH-64D	133.5	1/64		172X
AO	basic airwork at nellis		Task			
Nazgul 6	Training	4x F-15E	262.45	21/84		156X
AO			Task	A/G Delivery		
Raptor 1	Training	4x F-16C	134.0	1/64		162X
AO	R76		Task	High Drag - Bomb Training		
Tiger 1	Training	4x F/A-18C	261.15	1/64		155X
AO	R64		Task	Dive Bomb		
Raptor 1	Training	4x F-16C	134.25	1/64		162X
AO	R		Task	High Drag - Bomb Training		

RADIO CHANNELS

#	Freq	Name
1		Flight/Squadron specific
2	289.4	Nellis Clearance Delivery
3	275.8	Nellis Ground
4	327.0	Nellis Tower
5	385.4	Nellis Approach/Departure West
6	273.55	Nellis Approach/Departure East
7	317.525	Nellis Control -- Sally
8	254.4	Nellis Control-- Lee
9	305.6	SOF Bullseye
10	343.725	EMERGENCY SINGLE FRQ
11	270.1	Nellis ATIS
12	360.625	Creech AFB Tower
13	250.1	HAVE QUICK 13
14	251.1	HAVE QUICK 14
15	252.1	HAVE QUICK 15
16	377.8	Blackjack
17	265.0	KC-135 AR-641A
18	360.8	KC-135MPRS AR-635
19	319.8	KC-135MPRS AR-625
20	300.05	KC-135 AR-231V

RAMROD

0	1	2	3	4	5	6	7	8	9
D	E	P	I	L	A	T	O	R	Y

KTC 1400 C

	0	1	2	3	4	5	6	7	8	9
A	ASWY	NMO	PFG	DJ	TE	KQX	BR	IU	HC	VL
B	GDUX	IWM	ABK	HQ	VE	NFY	JL	SP	TO	CR
C	YVCA	TJO	MIH	DE	UG	RLN	QW	BK	XP	FS
D	JFTR	CSV	AWI	OP	UE	GDM	BY	KX	QN	LH
E	JCFX	NVK	OPU	YA	GB	HLQ	WE	SI	MR	DT
F	ICPN	AOW	TYH	RS	LK	BXD	FU	QV	EG	JM
G	IXGK	YMN	RVH	AL	FD	OES	TB	JW	UP	QC
H	QDCN	SVT	WOB	YP	LH	UKR	FM	AX	IE	JG
I	HDVI	TRM	XPB	YC	EQ	NLS	AU	FJ	KO	WG
J	HUNJ	XFI	BLR	VC	EK	TQM	YD	PO	SA	WG
K	SKUM	JIT	HRQ	WO	PX	DCN	EY	GV	LA	BF
L	RGYV	DEJ	OTU	IW	AH	KCL	MN	PS	XB	QF
M	HCIN	ORX	TKF	PY	VG	QAE	LJ	MD	WS	UB
N	HGTA	IBW	OLS	MX	RK	QVP	JF	DN	CE	UY
O	SJEY	LVR	WFX	IN	TU	AGB	CH	KQ	PM	OD
P	VJTA	LIK	EMD	CX	BH	WQP	SU	OR	GY	FN
Q	JEUC	FHR	PDM	LV	TO	YXK	WQ	IA	SG	BN
R	WKRL	MEB	PGU	QS	CO	FHI	XD	AJ	VY	TN
S	BLFG	YOH	RTP	VJ	AE	WMK	IQ	XU	CD	NS
T	KHQN	SUW	IMG	RO	PJ	CEF	XY	TB	AV	LD
U	MLYT	NAK	RUH	OQ	IB	EJF	GS	XP	WC	DV
V	PQVJ	NRA	SDG	HK	FY	UTX	WE	IM	CL	OB
W	QKSI	WHV	GMC	XB	DY	TFR	AE	LP	NU	OJ
X	DNBV	QWJ	ULY	XH	IC	MSE	FO	PR	AT	KG
Y	YIQE	NJV	FKS	CB	WM	PDH	GR	XT	AU	LO

NAVAIDS

Id	Name	Channel	Position	Elevation
BCE	Bryce Canyon	75	N3741.35 W11218.23	9040
BIH	Bishop	33	N3722.62 W11821.99	4114
BLD	Boulder	114	N3559.75 W11451.82	3650
BTY	Beatty	94	N3648.54 W11644.86	2925
CDC	Cedar City	120	N3747.24 W11304.90	5463
DAG	Daggett	79	N3457.75 W11634.69	1760
EED	Needles	99	N3445.96 W11428.43	650
GFS	Goffs	91	N3507.87 W11510.59	4019
GRL	Groom Lake	18	N3713.91 W11548.16	4475
HEC	Hector	74	N3447.83 W11627.78	1854
ILC	Wilson Creek	110	N3815.02 W11423.65	9318
INS	Creech AFB	87	N3635.20 W11540.12	3101
LAS	McCarran Intl	116	N3604.78 W11509.59	2142
LSV	Nellis	12	N3614.68 W11501.50	1864
MLF	Milford	58	N3821.62 W11300.79	4977
MMM	Mormon Mesa	90	N3646.16 W11416.65	2120
MVA	Mina	98	N3833.92 W11801.97	7860
OAL	Coale Dale	124	N3800.20 W11746.23	4800
PGS	Peach Springs	57	N3537.48 W11332.67	4754
TPH	Tonopah Muni	119	N3801.84 W11702.01	5330
TQQ	Silverbow	77	N3748.00 W11647.00	5500
UTI	St George	23	N3705.29 W11335.53	2871



RWY 3L-21R
 PCN 46 R/C/W/T
 RWY 3R-21L
 PCN 51 R/C/W/T
 2017

PAR	RWY	CAT	MINIMA		ARP	ELEV	Scale 1:35'500	
	21L	A B D E	2057 - 0.8 200	(200-0.8/1.6) GS 3°	36° 14.060° N 115° 01.058° W	1857 [ft] 566 [m]	0 300 600 900 1200 1500 [m]	
	3R	A B D E	2057 - 0.8 200	(200-0.8/1.6) GS 3°			0 1000 2000 3000 4000 5000 [ft]	
SRA	21R	A C D E	2257 - 1.2 350	(350-1.2/1.6)				
	3L	A C D E	2257 - 1.2 350	(350-1.2/1.6)				

RWY	TORA	TODA	ASDA	LDA	PSN	THR	ALS
21L	10051 [ft] 3063 [m]	11051 [ft] 3368 [m]	11051 [ft] 3368 [m]	10051 [ft] 3063 [m]	36°14.043' N	115°01.018' W	⊕
3R	10120 [ft] 3084 [m]	11120 [ft] 3398 [m]	11120 [ft] 3398 [m]	10120 [ft] 3084 [m]	36°13.029' N	115°02.038' W	

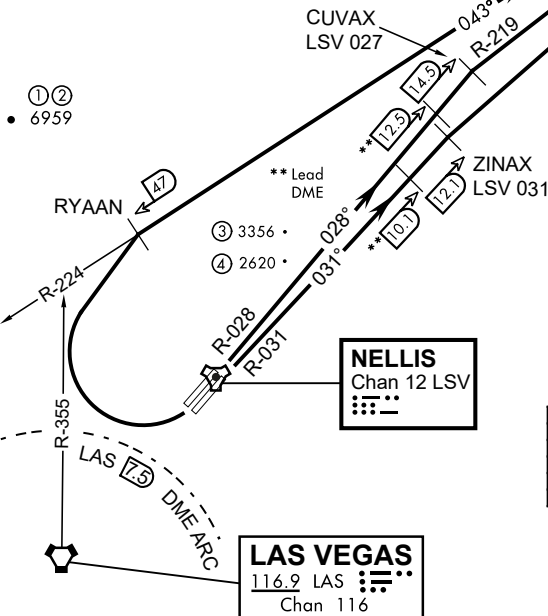
ATIS	NELLIS GROUND	NELLIS TOWER	NELLIS CONTROL	TACAN	ILS RWY 21L	NELLIS EAST	NELLIS WEST
270.100 MHz	275.800 121.800	327.000 132.55	317.525	LSV 12X	109.10 Mhz	384.400	385.000

ATIS
270.100
NELLIS GROUND
275.800
NELLIS TOWER
327.000
NELLIS CONTROL
317.525
NELLIS DEP/APP EAST
384.400
BLACKJACK
377.800



MORMON MESA
114.3 MMM
Chan 90
L-9 H-3

19,000



CAUTION: If unable to comply with restrictions advise ATC prior to departure.

- ① 12.24 NM from Rwy 21R
- ② 12.40 NM from Rwy 21L
- ③ 5.67 NM from Rwy 3L
- ④ 5.85 NM from Rwy 3R

Rwy	Knots	60	120	180	240	300	360
* 3L	V/V(fpm)	291	582	873	1164	1455	1746
* 3R	V/V(fpm)	258	516	774	1032	1290	1548
* 21L	V/V(fpm)	529	1058	1587	2116	2645	3174
* 21R	V/V(fpm)	536	1072	1680	2144	2680	3216
† 3L/R	V/V(fpm)	359	718	1077	1436	1795	2154

* Minimum † ATC Climb Rate
 ② To 3600
 ③ To 3200
 ④ To 17,000
 ⑤ To 13,500
 ⑥ To 19,000

DEPARTURE ROUTE DESCRIPTION

TAKE-OFF RWY 3L

- Fly runway heading to intercept the LSV TACAN R-027 then direct CUVAX, intercept the MMM VORTAC R-219 then direct MMM climbing to FL190 or as assigned, then via assigned route.

TAKE-OFF RWY 3R

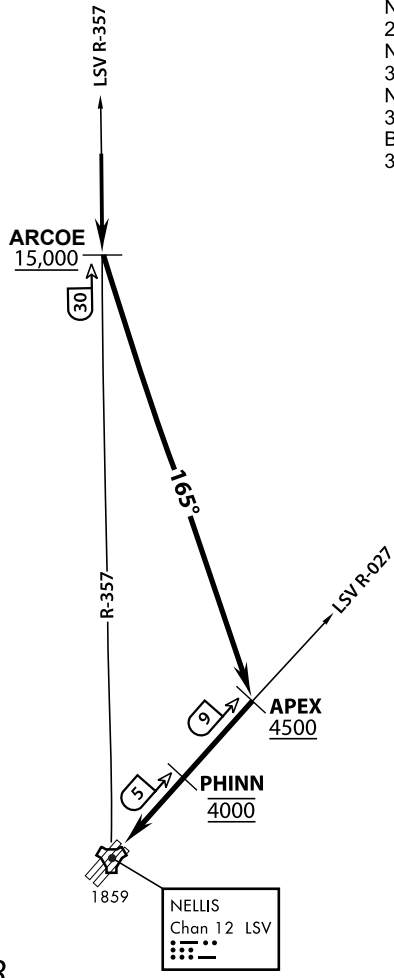
- Fly runway heading to intercept the LSV TACAN R-031 then direct ZINAX, intercept the MMM VORTAC R-217 then direct MMM, climbing to FL190 or as assigned, then via assigned route.

TAKE-OFF RWY 21L/R

- Turn right to intercept MMM VORTAC R-224 prior to MMM 47 DME, remain North of the LAS VORTAC 7.5 DME, remain East of LAS R-355, intercept MMM R-224 then direct MMM cross MMM at or above FL190, then via assigned route.

NOISE ABATMENT PROCEDURES: Fly acc. Nellis Noise Abatement instructions

ATIS
 270.100
 NELLIS GROUND
 275.800
 NELLIS TOWER
 327.000
 NELLIS CONTROL
 317.525
 BLACKJACK
 377.800



VMC ONLY

PILOT RESPONSIBLE FOR
TERRAIN AVOIDANCE

APPROACH ROUTE DESCRIPTION

OVERHEAD

Cross ARCOE at or above 15,000 MSL, then heading 165° to APEX.
 Cross APEX at or above 4,500 MSL, report to tower.
 Cross PHINN (LSV 027/5) at 4,000 MSL then descend to 3,500 MSL for Initial.

VFR STRAIGHT IN RWY 21

Cross APEX at 4,000 feet MSL. Descend to be at 3,000 feet MSL at PHINN (LSV 027/5).



INDIAN SPRINGS, NEVADA

TACAN INS Chan 87	APCH CRS 065°	Rwy ldg TDZE 3133	9002 3113
		Arpt Elev 3113	

INDIAN SPRINGS AF AUX (KINS)

NOT FOR CIVIL USE

* MISSED APPROACH: Straight ahead to INS TACAN, intercept INS R-outbound, cross 17 DME at or above 9500, then direkt KSV TACAN

114

NELLIS CON

CREECH AFB TOWER
118.30 60.60

GND CON

FOR USE UNDER BASIC VFR WEATHER MINIMUMS ONLY

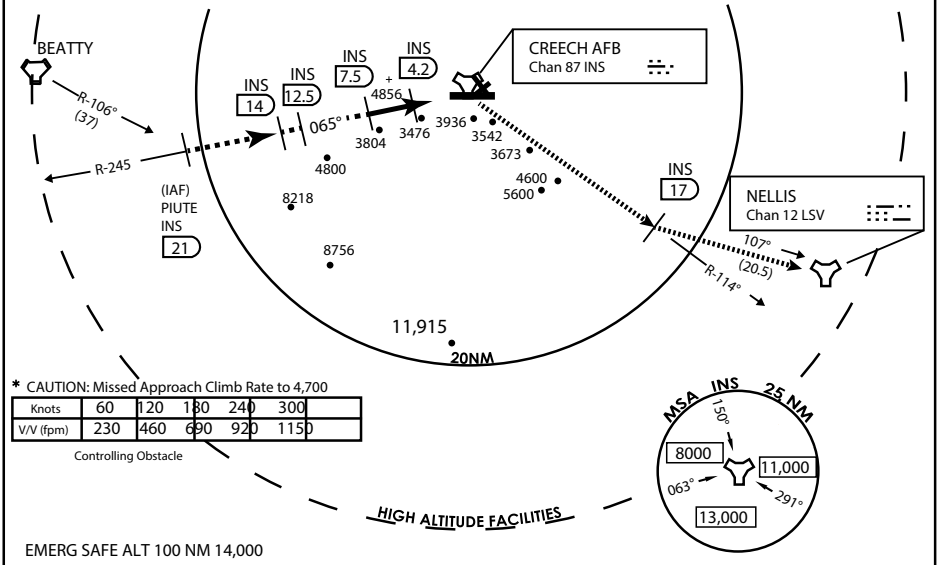
PILOT IS RESPONSIBLE FOR TERRAIN/OBSTACLE AVOIDANCE AND APPROPRIATE VFR CLOUD CLEARANCE FOR ALL

CAUTION: Descent gradients are greater than allowed under standard TERPS criteria and inbound course does not meet straight-in criteria

CAUTION: Final approach course crosses Runway centerline at MIDFIELD. Maneuvering left of course required prior to landing. Do not Maneuver farther north than the INS R- 258

Modified by viaBog 66 for use with DCS
NOT FOR REAL LIFE NAVIGATION

Modified by viaBog 66 for use with DCS
NOT FOR REAL LIFE NAVIGATION



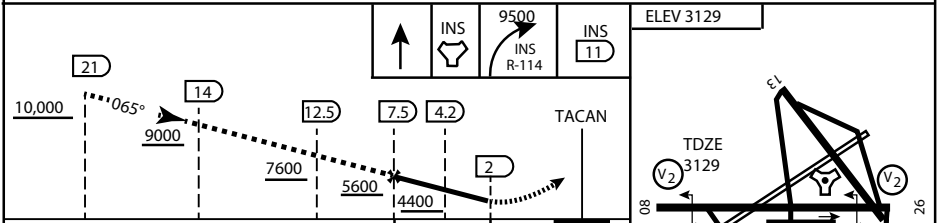
* CAUTION: Missed Approach Climb Rate to 4,700

Knots	60	120	180	240	300
V/V (fpm)	230	460	690	920	1150

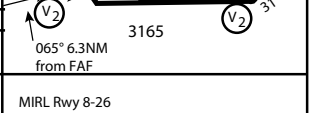
Controlling Obstacle

HIGH ALTITUDE FACILITIES

EMERG SAFE ALT 100 NM 14,000



CATEGORY	A	B	C	D	E
S-8	3760-1 1/2	627 (700-1 1/2)	3760-1 3/4 627 (700-1 3/4)	3760-2 627 (700-2)	3760-2 1/4 627 (700-2 1/4)
CIRCLING	NOT AUTHORIZED				



CITY OF INDIAN, NEVADA

INDIAN SPRINGS AF AUX (KINS)

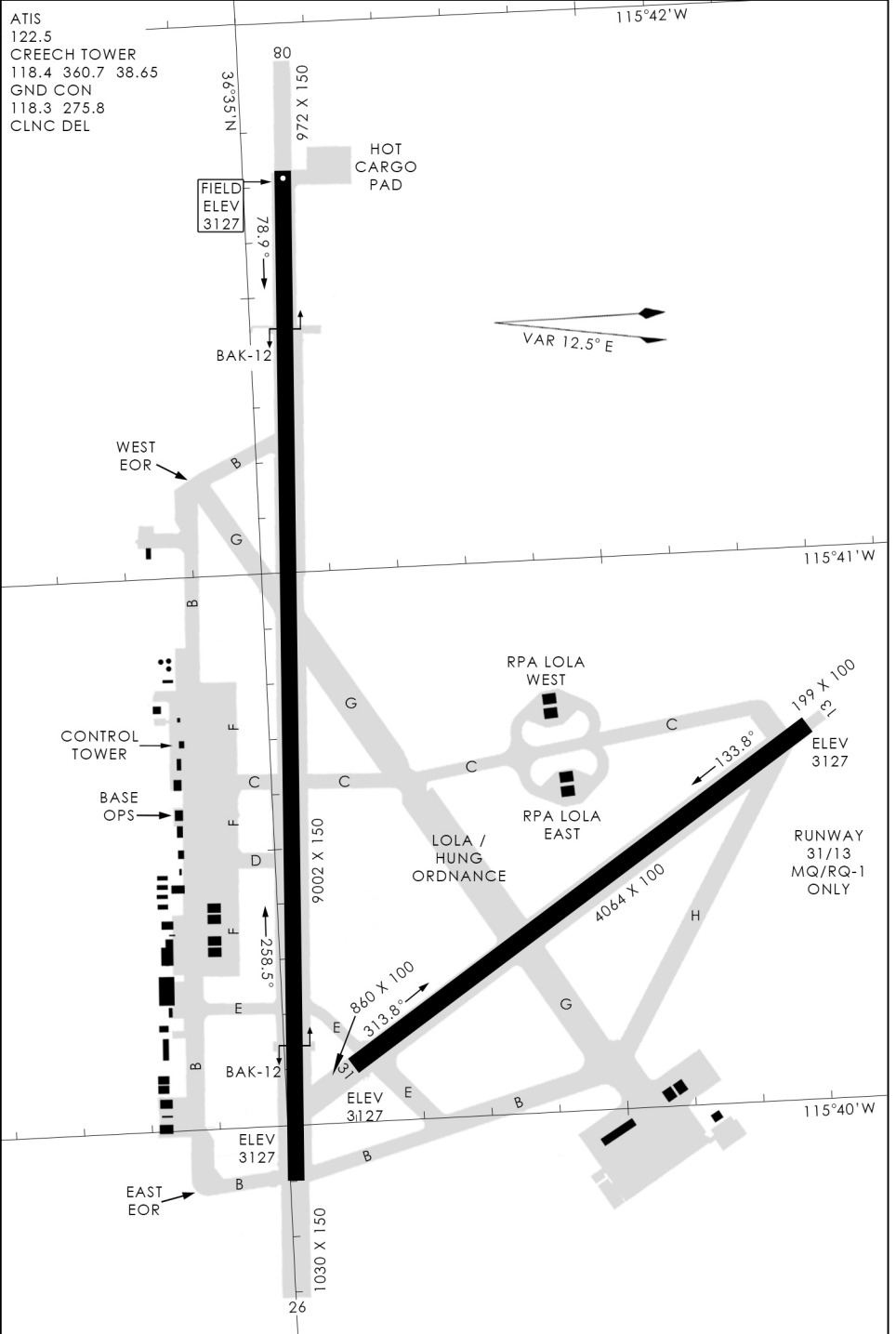
(FOR DAY VFR USE ONLY)



AIRPORT DIAGRAM

476 VFG

CREECH AFB (KINS)
INDIAN SPRINGS, NEVADA



476 VFG JAN 2019

476 VFG JAN 2019

AIRPORT DIAGRAM

INDIAN SPRINGS, NEVADA
CREECH AFB (KINS)