

**MISSION DATA CARD**

OPORD	Callsign	Mission	Date/Time			
3155/2024	Edelweiss 2	Training	022000SEP24			
Task						Freq
AO	basic airwork at nellis					133.5
Departure			Recovery			
HELICOPTER DEP			HELICOPTER ARR			
#	Callsign	Pilot	IFF	TCN	LSR	NET
-1	Edelweiss 2-1	Mütze/Remotex	1721	1Y	1721	
-2	Edelweiss 2-2	Hudson	1722	64Y	1722	

**LOADOUT**

A/A		GUN	
A/G		CHF	
POD		FLR	
TKS		FUEL	

**TOLD**

	Takeoff	Target	Joker	Bingo	Land
FUEL	2513				

**AIRBASES**

	Name	TCN	ATIS	GND	TWR	RWY	Elev	ILS
Dep	Nellis AFB	12X	270.1	275.8	327.0	21L	1850	109.1
Arr	Nellis AFB	12X	270.1	275.8	327.0	21L	1850	109.1

**FLIGHTPLAN**

#	Name	Navaid/Coords/DME	ALT	TOT
1	SOUTH GAP	LSV 160/2.9 (N36 11.940 W115 00.400)		
2	WEST FLEX	LSV 307/6.5 (N36 18.640 W115 08)		
3	Winner LZ	LSV 356/6 (N36 20.330 W115 00.250)		

**COMMS**

Radio	Usage
1	133.50
2	327.0

## NOTES

t/o-procedures

pattern

landing-procedures

## OTHER FLIGHTS

Callsign	Mission	Airframe	Freq	TCN	Grpld	Laser
Monster 1	Training	2x A-10C	132.15	1/64	21	161X
AO	S/E OF LAS VEGAS	Task	FORM.-PROC. & CONTRACTS			
Nazgul 6	Training	4x F-15E	262.45	21/84		156X
AO		Task	A/G Delivery			
Raptor 1	Training	4x F-16C	134.0	1/64		162X
AO	R76	Task	High Drag - Bomb Training			
Tiger 1	Training	4x F/A-18C	261.15	1/64		155X
AO	R64	Task	Dive Bomb			
Raptor 1	Training	4x F-16C	134.25	1/64		162X
AO	R	Task	High Drag - Bomb Training			

**RADIO CHANNELS**

#	Freq	Name
1		Flight/Squadron specific
2	289.4	Nellis Clearance Delivery
3	275.8	Nellis Ground
4	327.0	Nellis Tower
5	385.4	Nellis Approach/Departure West
6	273.55	Nellis Approach/Departure East
7	317.525	Nellis Control -- Sally
8	254.4	Nellis Control-- Lee
9	305.6	SOF Bullseye
10	343.725	EMERGENCY SINGLE FRQ
11	270.1	Nellis ATIS
12	360.625	Creech AFB Tower
13	250.1	HAVE QUICK 13
14	251.1	HAVE QUICK 14
15	252.1	HAVE QUICK 15
16	377.8	Blackjack
17	265.0	KC-135 AR-641A
18	360.8	KC-135MPRS AR-635
19	319.8	KC-135MPRS AR-625
20	300.05	KC-135 AR-231V

**RAMROD**

0	1	2	3	4	5	6	7	8	9
D	E	P	I	L	A	T	O	R	Y

**KTC 1400 C**

	0	1	2	3	4	5	6	7	8	9
A	ASWY	NMO	PFG	DJ	TE	KQX	BR	IU	HC	VL
B	GDUX	IWM	ABK	HQ	VE	NFY	JL	SP	TO	CR
C	YVCA	TJO	MIH	DE	UG	RLN	QW	BK	XP	FS
D	JFTR	CSV	AWI	OP	UE	GDM	BY	KX	QN	LH
E	JCFX	NVK	OPU	YA	GB	HLQ	WE	SI	MR	DT
F	ICPN	AOW	TYH	RS	LK	BXD	FU	QV	EG	JM
G	IXGK	YMN	RVH	AL	FD	OES	TB	JW	UP	QC
H	QDCN	SVT	WOB	YP	LH	UKR	FM	AX	IE	JG
I	HDVI	TRM	XPB	YC	EQ	NLS	AU	FJ	KO	WG
J	HUNJ	XFI	BLR	VC	EK	TQM	YD	PO	SA	WG
K	SKUM	JIT	HRQ	WO	PX	DCN	EY	GV	LA	BF
L	RGYV	DEJ	OTU	IW	AH	KCL	MN	PS	XB	QF
M	HCIN	ORX	TKF	PY	VG	QAE	LJ	MD	WS	UB
N	HGTA	IBW	OLS	MX	RK	QVP	JF	DN	CE	UY
O	SJEY	LVR	WFX	IN	TU	AGB	CH	KQ	PM	OD
P	VJTA	LIK	EMD	CX	BH	WQP	SU	OR	GY	FN
Q	JEUC	FHR	PDM	LV	TO	YXK	WQ	IA	SG	BN
R	WKRL	MEB	PGU	QS	CO	FHI	XD	AJ	VY	TN
S	BLFG	YOH	RTP	VJ	AE	WMK	IQ	XU	CD	NS
T	KHQN	SUW	IMG	RO	PJ	CEF	XY	TB	AV	LD
U	MLYT	NAK	RUH	OQ	IB	EJF	GS	XP	WC	DV
V	PQVJ	NRA	SDG	HK	FY	UTX	WE	IM	CL	OB
W	QKSI	WHV	GMC	XB	DY	TFR	AE	LP	NU	OJ
X	DNBV	QWJ	ULY	XH	IC	MSE	FO	PR	AT	KG
Y	YIQE	NJV	FKS	CB	WM	PDH	GR	XT	AU	LO

**NAVAIDS**

<b>Id</b>	<b>Name</b>	<b>Channel</b>	<b>Position</b>	<b>Elevation</b>
BCE	Bryce Canyon	75	N3741.35 W11218.23	9040
BIH	Bishop	33	N3722.62 W11821.99	4114
BLD	Boulder	114	N3559.75 W11451.82	3650
BTY	Beatty	94	N3648.54 W11644.86	2925
CDC	Cedar City	120	N3747.24 W11304.90	5463
DAG	Daggett	79	N3457.75 W11634.69	1760
EED	Needles	99	N3445.96 W11428.43	650
GFS	Goffs	91	N3507.87 W11510.59	4019
GRL	Groom Lake	18	N3713.91 W11548.16	4475
HEC	Hector	74	N3447.83 W11627.78	1854
ILC	Wilson Creek	110	N3815.02 W11423.65	9318
INS	Creech AFB	87	N3635.20 W11540.12	3101
LAS	McCarran Intl	116	N3604.78 W11509.59	2142
LSV	Nellis	12	N3614.68 W11501.50	1864
MLF	Milford	58	N3821.62 W11300.79	4977
MMM	Mormon Mesa	90	N3646.16 W11416.65	2120
MVA	Mina	98	N3833.92 W11801.97	7860
OAL	Coale Dale	124	N3800.20 W11746.23	4800
PGS	Peach Springs	57	N3537.48 W11332.67	4754
TPH	Tonopah Muni	119	N3801.84 W11702.01	5330
TQQ	Silverbow	77	N3748.00 W11647.00	5500
UTI	St George	23	N3705.29 W11335.53	2871



PAR	RWY	CAT	MINIMA	ARP	ELEV	Scale 1:35'500
	21L	A B D E	2057 - 0.8 200 (200-0.8/1.6) GS 3°	36° 14.060° N 115° 01.058° W	1857 [ft] 566 [m]	0 300 600 900 1200 1500 [m]
	3R	A B D E	2057 - 0.8 200 (200-0.8/1.6) GS 3°			0 1000 2000 3000 4000 5000 [ft]
SRA	21R	A C D E	2257 - 1.2 350 (350-1.2/1.6)			
	3L	A C D E	2257 - 1.2 350 (350-1.2/1.6)			

RWY	TORA	TODA	ASDA	LDA	PSN	THR	ALS
21L	10051 [ft] 3063 [m]	11051 [ft] 3368 [m]	11051 [ft] 3368 [m]	10051 [ft] 3063 [m]	36°14.043' N	115°01.018' W	⊕
3R	10120 [ft] 3084 [m]	11120 [ft] 3398 [m]	11120 [ft] 3398 [m]	10120 [ft] 3084 [m]	36°13.029' N	115°02.038' W	

ATIS	NELLIS GROUND	NELLIS TOWER	NELLIS CONTROL	TACAN	ILS RWY 21L	NELLIS EAST	NELLIS WEST
270.100 MHz	275.800   121.800	327.000   132.55	317.525	LSV 12X	109.10 Mhz	384.400	385.000



# HELICOPTER ARR/DEP VAD-CHART | VALID 2014

**NELLIS AFB (KLSV)**  
LAS VEGAS, NEVADA

ATIS  
270.100  
NELLIS GROUND  
275.800  
NELLIS TOWER  
327.000  
BLACKJACK  
377.800

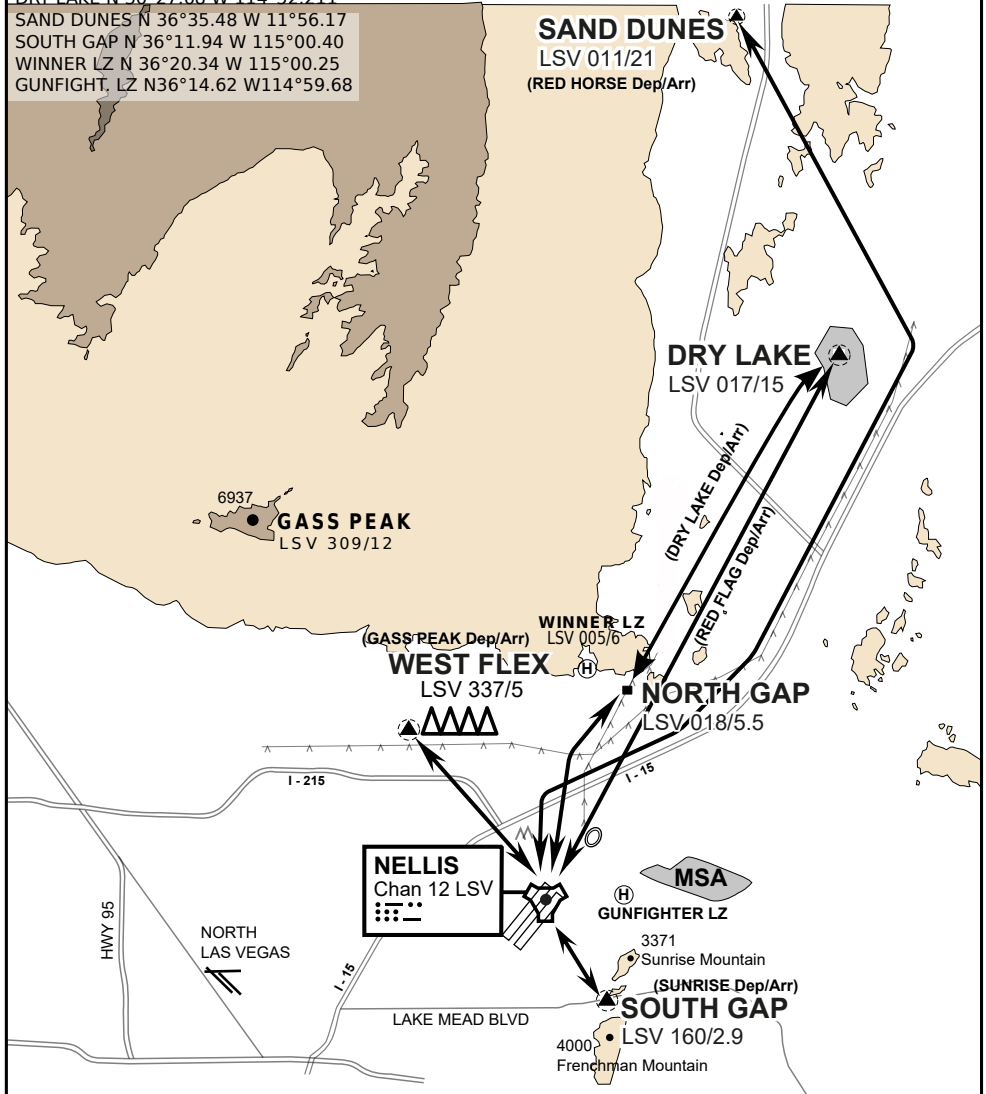
CAUTION: If unable to comply  
with restrictions advise ATC  
prior to departure.

## VMC ONLY

if below WX Minima request SVFR



JOLLY PAD N 36°15.08 W 115°01.65  
WEST FLEX N 36°18.64 W 115°08.00  
NORTH GAP N 36°20.00 W 114°59.30  
DRY LAKE N 36°27.68 W 114°52.211  
SAND DUNES N 36°35.48 W 11°56.17  
SOUTH GAP N 36°11.94 W 115°00.40  
WINNER LZ N 36°20.34 W 115°00.25  
GUNFIGHT, LZ N36°14.62 W114°59.68



vJABeG32NTRR NAV CHART

# HELICOPTER ARRIVAL AND DEPARTURES ROUTES

v.110 22APR20

# HELICOPTER ARR/DEP VAD-CHART | VALID 2014

**NELLIS AFB (KLSV)**  
LAS VEGAS, NEVADA

ATIS  
270.100  
NELLIS GROUND  
275.800  
NELLIS TOWER  
327.000  
BLACKJACK  
377.800

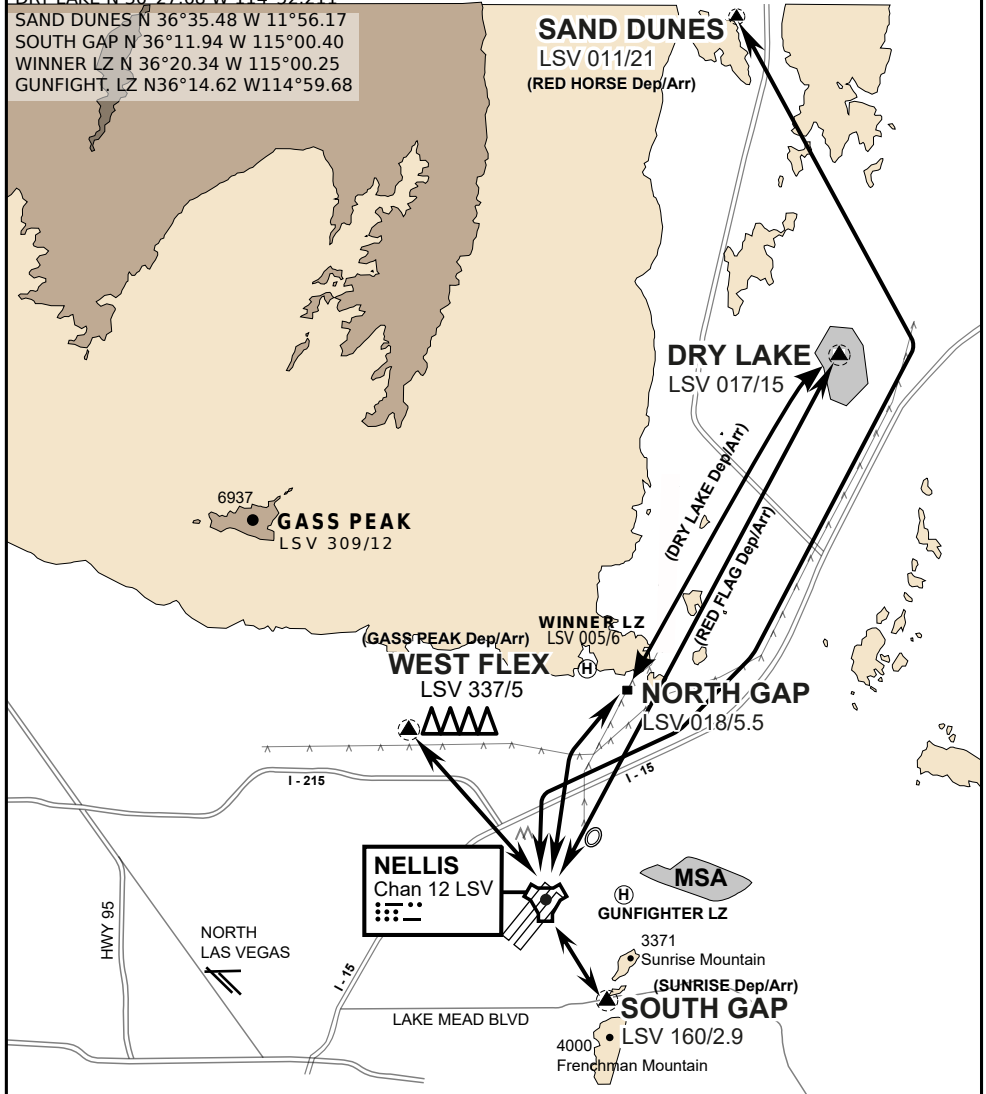
CAUTION: If unable to comply  
with restrictions advise ATC  
prior to departure.

## VMC ONLY

if below WX Minima request SVFR



JOLLY PAD N 36°15.08 W 115°01.65  
WEST FLEX N 36°18.64 W 115°08.00  
NORTH GAP N 36°20.00 W 114°59.30  
DRY LAKE N 36°27.68 W 114°52.211  
SAND DUNES N 36°35.48 W 11°56.17  
SOUTH GAP N 36°11.94 W 115°00.40  
WINNER LZ N 36°20.34 W 115°00.25  
GUNFIGHT, LZ N36°14.62 W114°59.68



vJABeG32NTRR NAV CHART

## HELICOPTER ARRIVAL AND DEPARTURES ROUTES

v.110 22APR20