

MISSION DATA CARD

OPORD		Callsign		Mission		Date/Time	
3138/2024		Nazgul 6		CAP		262000AUG24	
Task	BVR Maneuver Training					Freq	
AO	ETTR					262.45	
Departure				Recovery			
RWY28 VFR				RWY10 VFR			
#	Callsign	Pilot		IFF	TCN	LSR	NET
-1	Nazgul 6-1	Razorback/Uta		1161	1Y	1561	
-2	Nazgul 6-2	Tank/TaB		1162	64Y	1562	
-3	Nazgul 6-3	Repsus/Lempo		1163	64X	1563	

LOADOUT

A/A	6xA120C, 2xA9M				GUN	100% SAPHEI
A/G					CHF	120
POD	TGT, NAV				FLR	60
TKS	2xFT610				FUEL	100%

TOLD

	Takeoff	Target	Joker	Bingo	Land
FUEL	30518				

AIRBASES

	Name	TCN	ATIS	GND	TWR	RWY	Elev	ILS
Dep	Akrotiri AFB	107X	288.2	240.1	339.85	28	62	109.7
Arr	Akrotiri AFB	107X	288.2	240.1	339.85	28	62	109.7
Div	Ramat David AFB		118.4		118.6	27	125	

FLIGHTPLAN

#	Name	Navaid/Coords/DME	ALT	TOT
1	SIERRA	N34 25.310 E032 58.400	1500	
2	CAP 1	N32 45 E034 36	35000	
3	NFZ 1	N36 09 E035 53	0	
4	NFZ 2	N34 35 E035 59	0	
5	NFZ 3	N33 41 E035 26	0	
6	NFZ 4	N32 01 E036 13	0	

COMMS

Radio	Usage
1	01
2	04 / 16 / 04

NOTES

===SEQUENCE===

0800J

ATIS : RW10, QNH 29.82

T/O Akrotiri VFR Dep via SIERRA

MAX PWR CLMB to A35

CAP 1 - HOT 090 - 15nm - A35 - M.8 - LH - split EL

RTB AKR VFR Rec via SIERRA

===RADIO===

NAZGUL 6 - CH01

BALROG 7 - CH02

AKR TWR - CH04

CVN72 - CH07 - TCN72X

OVERLORD1 - CH16 (on station 0812J)

ARCO1 - CH17 (on station 0824J)

===ROE - weapons hold===

- aggressive maneuvering

- STT

- Entering NFZ

- UTA say we are good to go

SUPPORT**Tanker**

Callsign	TCN	Freq	ALT	TAS
ARCO 1	22Y	319.8	FL222	400
	Pos	ARCO1: (N3701 E03457)		

AWACS

Callsign	Freq	ALT	Pos
OVERLORD2	377.8	FL320	N3713 E03643 - N3714 E03749

RADIO CHANNELS

#	Freq	Name
1		Flight/Squadron specific
2	288.2	Akrotiri ATIS
3	240.1	Akrotiri Ground
4	339.85	Aktrotiri Tower
5	335.05	Akrotiri Approach
6	360.1	Incirlik Tower
7	371.35	Incirlik Ground
8	377.475	Incirlik ATIS
9		No Preset
10	127.3	Paphos ATIS
11	353.8	Paphos Tower
12	304.0	CVN-73 George Washington
13	302.0	LHA-1 Tarawa
14	259.0	CV-59 Forrestal
15		No Preset
16	377.8	Overlord
17	265.0	KC-135 Texaco-1 medium/slow
18	319.8	KC-135 Arco-1
19	360.8	KC-135MPRS Arco-2
20	256.0	S-3B Recovery Tanker

RAMROD

0	1	2	3	4	5	6	7	8	9
D	E	P	I	L	A	T	O	R	Y

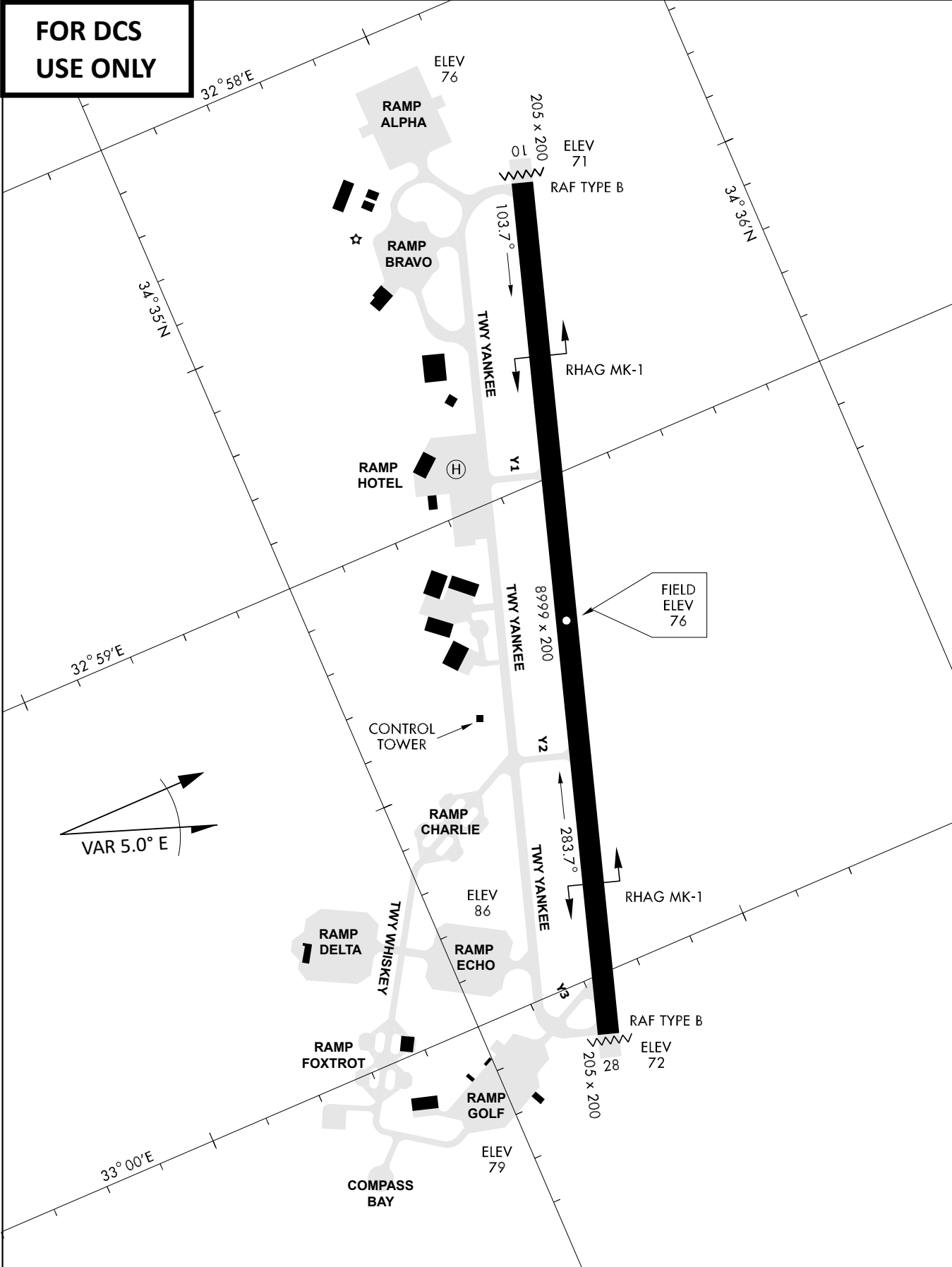
KTC 1400 C

	0	1	2	3	4	5	6	7	8	9
A	EIAR	BSC	MJG	TU	LO	DVX	WP	YH	QF	KN
B	GSTR	NQE	KBO	MA	IP	WVC	DY	FL	JX	HU
C	AJRH	TGU	FNE	PY	QC	DVL	IM	BS	XW	KO
D	IBAT	LOP	QSK	YR	UD	NVM	XG	WC	JF	HE
E	IXEL	YBN	QUA	CT	HF	DMV	KO	RJ	PG	SW
F	SPNR	VTG	YIB	CD	MW	UOX	EK	FJ	LQ	AH
G	YKLV	SFX	WCB	AU	DT	NGR	JI	QE	OH	MP
H	CNJO	BLF	TEW	PS	YQ	IDV	XG	MU	AK	RH
I	QUNJ	XOH	FBD	WL	YG	PCE	VI	RK	AM	ST
J	OSTH	YRN	QIJ	UP	KA	VEC	DG	FB	MX	LW
K	RDFP	XGO	KJA	WN	MQ	CHT	VB	EU	LI	SY
L	NGKL	OMD	HBA	RC	YQ	UVJ	XP	FS	EW	TI
M	DRGJ	POK	MHU	ES	AX	VWF	NI	YT	CL	QB
N	UVME	AXY	IOB	WS	GK	CTP	JD	FH	RL	NQ
O	BXMP	TSG	OJK	UW	EI	LCV	NY	RF	QD	AH
P	VWKB	CIN	UAY	LQ	MT	HDO	SJ	XF	PG	RE
Q	FDXV	LSH	CIG	YR	JQ	ETM	PN	AW	KB	UO
R	RJHW	VNE	TBD	IK	QO	LGX	UF	CM	YS	PA
S	VGWB	DSY	LAR	MF	CO	ENX	HT	PQ	JU	KI
T	LDCW	MNG	HPJ	KE	TB	AOU	FX	RS	QV	YI
U	CFUR	GXQ	HVL	JY	NO	KPE	MA	IT	DW	BS
V	GDNY	WOH	LET	JR	MF	BXA	CV	QI	PS	UK
W	NOJQ	VLY	XDE	GA	FC	HST	UI	PB	KM	WR
X	DCLE	BPT	MHA	IX	WQ	UGV	SN	OR	KJ	YF
Y	ULPR	NMB	QEF	IW	XC	VHG	SO	KD	JT	AY

NAVAIDS

Id	Name	Channel	Position	Elevation
DAN	Incirlik	21	N37 00.950 E035 26.883	243
AKR	Akrotiri	107	N34 34.765 E032 57.769	147
PHA	Paphos	79	N34 42.997 E032 28.963	35
RMD	Ramat David	84	N32 39.892 E035 11.265	136
OS66	Kuweires Military Aviation Institute	36	N36 11.362 E037 34.226	1200

**FOR DCS
 USE ONLY**

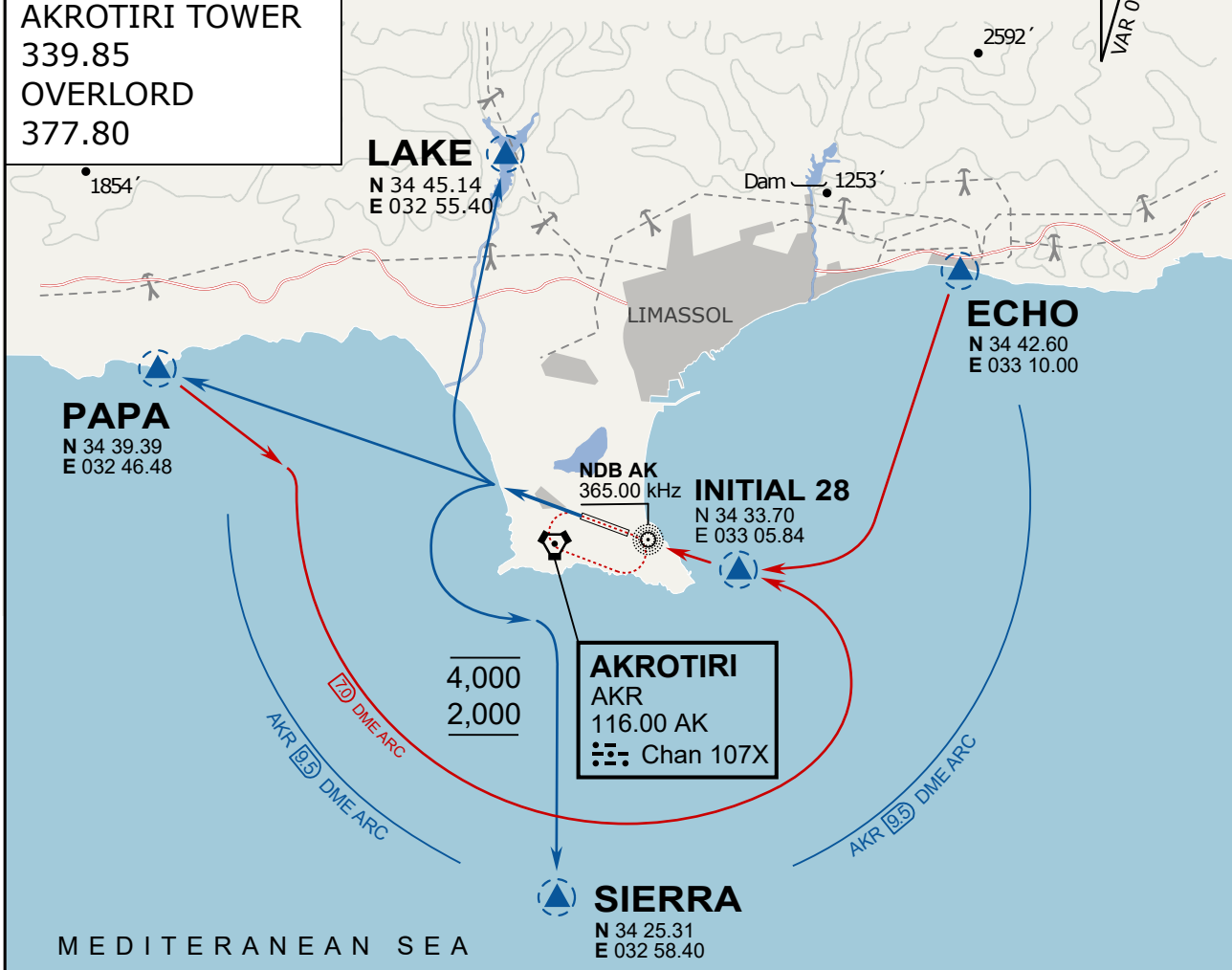


ATIS	AKROTIRI GND	AKROTIRI TWR	OVERLORD CONTROL	TACAN	FIELD ELEVATION
288.20 MHz	240.10 122.10	339.85 130.075	377.8	AKR 107X	75 [ft] 23 [m]

ATIS
 288.20
 AKROTIRI GROUND
 240.10
 AKROTIRI TOWER
 339.85
 OVERLORD
 377.80

NOT FOR CIVIL USE

CAUTION: If unable to comply
 with restrictions advise ATC
 prior to departure.



ARR / DEP ROUTE DESCRIPTION

STRAIGHT-IN RWY28

Pass ENTRY at 5.000' MSL or below, pass INITIAL at 1.500' MSL or below.

OVERHEAD BREAK RWY28

Pass ENTRY at 5.000' MSL or below, pass INITIAL at 2.000' MSL, break to the south.

DEPARTURE GENERAL

Pass Departure end of runway at 1.000' or below.

DEP RWY28 PAPA: Fly straight ahead to exit.

DEP RWY28 LAKE: Fly straight ahead until coast, than right turn direct exit.

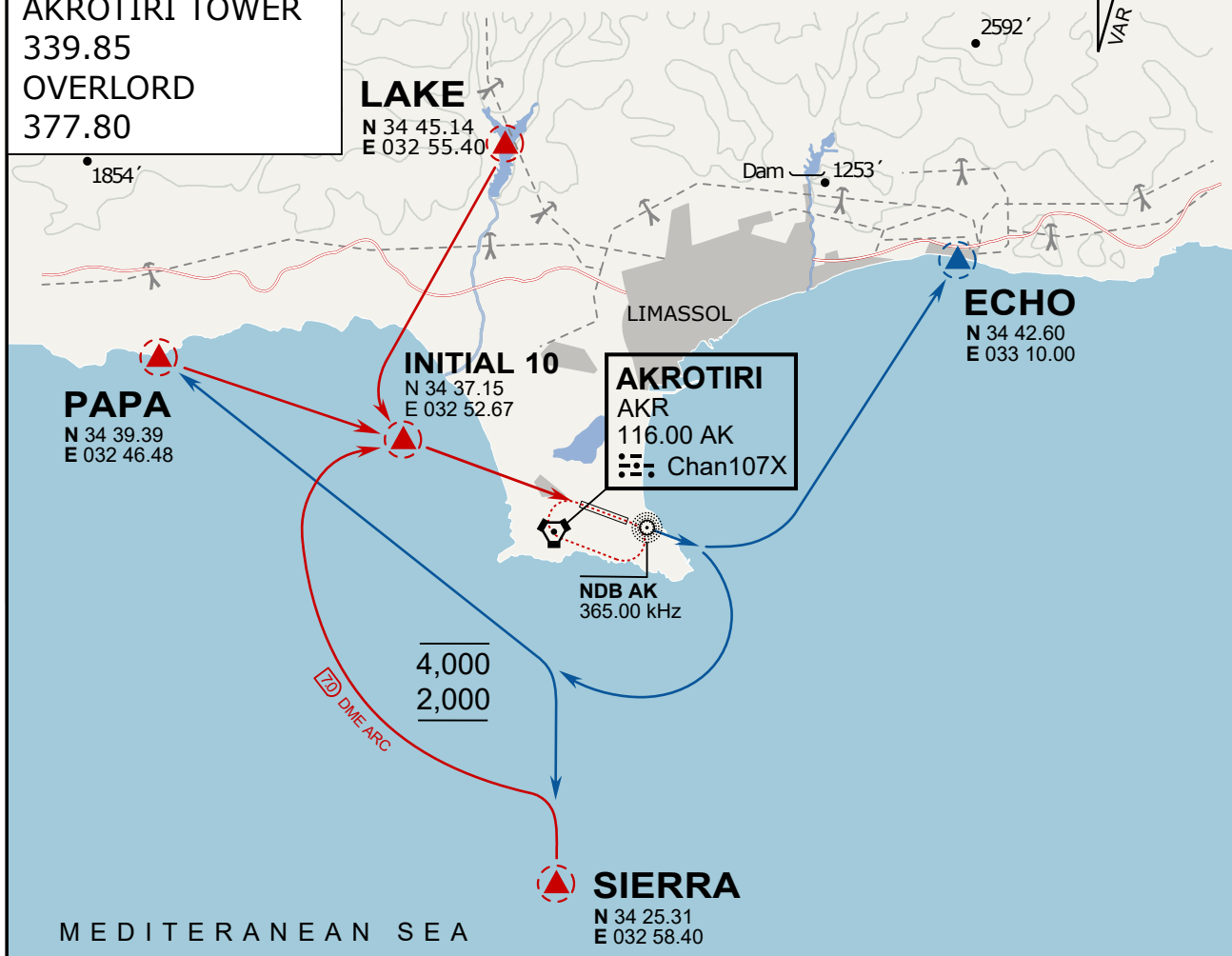
DEP RWY28 SIERRA: Fly straight ahead until coastline, then climbing left turn, intercept AKR R-180 to exit.

DEP ECHO: no exit.

ATIS
288.20
AKROTIRI GROUND
240.10
AKROTIRI TOWER
339.85
OVERLORD
377.80

NOT FOR CIVIL USE

CAUTION: If unable to comply with restrictions advise ATC prior to departure.



ARR / DEP ROUTE DESCRIPTION

ARRIVAL GENERAL

Pass Entry at 5.000' or below. Overhead Brake RWY 10: pass INITIAL 10 at 2.000' MSL. Straight-in RWY 10 : pass INITIAL 1.500' or below.

ARR RWY10 PAPA / LAKE: Direct initial.

ARR RWY10 SIERRA: Intercept ARC 7 of AKR to INITIAL 10.

ARR ECHO: no ENTRY.

DEPARTURE GENERAL

Pass Departure end of runway at 1.000' AGL or below. Keep RWY heading until coastline.

DEP RWY10 ECHO: Direct EXIT.

DEP RWY10 SIERRA: Climbing right turn, intercept R180 AKR to Sierra.

DEP RWY10 PAPA: Climbing right turn until R180 AKR, then direct Papa

DEP LAKE: no EXIT.

NOT AVAILABLE

