

**MISSION DATA CARD**

OPORD		Callsign		Mission		Date/Time		
3132/2024		Rattler 1		Training		222000AUG24		
Task						Freq		
AO						133.5		
Departure				Recovery				
HELICOPTER DEP				HELICOPTER ARR				
#	Callsign		Pilot		IFF	TCN	LSR	NET
-1	Rattler 1-1		Hudson		4611	1Y	1251	
-2	Rattler 1-2		Laud		4612	64Y	1252	

**LOADOUT**

A/A						GUN	
A/G						CHF	
POD						FLR	
TKS						FUEL	

**TOLD**

	Takeoff	Target	Joker	Bingo	Land
FUEL	2513				

**AIRBASES**

	Name	TCN	ATIS	GND	TWR	RWY	Elev	ILS
Dep	Nellis AFB	12X	270.1	275.8	327.0	21L	1850	109.1
Arr	Nellis AFB	12X	270.1	275.8	327.0	21L	1850	109.1

## COMMS

Radio	Usage
1	133.50
2	327.0

## OTHER FLIGHTS

Callsign	Mission	Airframe	Freq	TCN	Grpld	Laser
Tiger 1	Training	4x F/A-18C	261.15	1/64		155X
AO		Task	VFR Route			
Edelweiss 1	Training	4x F/A-18C	264.15	1/64		171X
AO		Task				
Raptor 1	Training	4x F-16C	134.0	1/64		162X
AO		Task				
Monster 1	Training	4x A-10C	132.15	1/64	21	161X
AO	S/E OF LAS VEGAS	Task	CDU EXERCISES			
Edelweiss 1	Training	1x F-16C	264.15	1/64		171X
AO		Task				
Nazgul 6	Training	4x F-15E	262.45	1/64		156X
AO		Task	Training			
Edelweiss 1	Training	2x A-10C	131.15	4/67	30	161X
AO	S/E OF LAS VEGAS	Task	VFR			

**RADIO CHANNELS**

#	Freq	Name
1		Flight/Squadron specific
2	289.4	Nellis Clearance Delivery
3	275.8	Nellis Ground
4	327.0	Nellis Tower
5	385.4	Nellis Approach/Departure West
6	273.55	Nellis Approach/Departure East
7	317.525	Nellis Control -- Sally
8	254.4	Nellis Control-- Lee
9	305.6	SOF Bullseye
10	343.725	EMERGENCY SINGLE FRQ
11	270.1	Nellis ATIS
12	360.625	Creech AFB Tower
13	250.1	HAVE QUICK 13
14	251.1	HAVE QUICK 14
15	252.1	HAVE QUICK 15
16	377.8	Blackjack
17	265.0	KC-135 AR-641A
18	360.8	KC-135MPRS AR-635
19	319.8	KC-135MPRS AR-625
20	300.05	KC-135 AR-231V

**RAMROD**

0	1	2	3	4	5	6	7	8	9
P	L	E	A	S	U	R	I	N	G

**KTC 1400 C**

	0	1	2	3	4	5	6	7	8	9
A	TKOQ	WFI	SCG	RN	EH	BJP	MY	LD	VU	XA
B	DYSG	EBQ	FXI	LN	UR	APH	VK	CW	TM	JO
C	XAIR	DFV	TJY	GW	CE	QNK	OU	BS	MH	PL
D	ONUH	QLX	BTR	JS	MK	FGV	WD	IP	YC	AE
E	WOSM	NFX	YBQ	GD	RC	IKL	UJ	HP	AT	EV
F	XLUR	PFI	HSE	TQ	ON	YWJ	CV	MK	BG	AD
G	MPHO	SBJ	DRF	UA	IW	GCV	NQ	LY	ET	KX
H	VSPU	KBG	HNW	FA	QD	RCL	OI	XM	ET	YJ
I	EDCH	WYA	LTR	OP	KB	JFI	XU	NM	SV	QG
J	WCGB	VKU	AMJ	HY	FP	ROL	IQ	TX	SD	EN
K	VUCB	HSA	OMW	XD	YK	JGE	LT	IP	FN	RQ
L	PKMB	JDG	FAR	SU	TO	VXQ	NW	CY	EL	IH
M	DLUV	WPM	QTX	CH	RS	IBK	EA	OJ	YN	FG
N	PAHD	WCE	MIX	YL	JV	NTF	BS	GQ	UR	OK
O	SAXC	YRD	OLF	EQ	UK	MNH	VJ	BI	GW	TP
P	JAKL	TIF	QGY	OS	BC	UPE	DR	MN	VW	HX
Q	IJOH	TRC	XBF	KM	PW	VNG	EY	LQ	US	DA
R	YVST	XJF	EBG	OR	DC	LHK	IM	AQ	WP	UN
S	WEBP	XNK	GFA	YL	QC	RVH	ID	JT	SO	MU
T	ATIQ	HLD	ECP	OX	YJ	VUF	NM	RK	GB	SW
U	OLCW	BYD	QIT	SM	FU	EKV	RG	HP	JA	XN
V	GFKB	RVH	AMU	LY	CT	XSE	JP	ND	WI	OQ
W	RLXA	JNG	MPC	SI	OY	VEU	HQ	KD	WF	BT
X	WTCX	MRG	AOI	NE	QV	DPY	SH	FJ	UL	KB
Y	KNOT	SUM	HAQ	VG	EJ	DRI	CB	LP	XW	YF

**NAVAIDS**

<b>Id</b>	<b>Name</b>	<b>Channel</b>	<b>Position</b>	<b>Elevation</b>
BCE	Bryce Canyon	75	N3741.35 W11218.23	9040
BIH	Bishop	33	N3722.62 W11821.99	4114
BLD	Boulder	114	N3559.75 W11451.82	3650
BTY	Beatty	94	N3648.54 W11644.86	2925
CDC	Cedar City	120	N3747.24 W11304.90	5463
DAG	Daggett	79	N3457.75 W11634.69	1760
EED	Needles	99	N3445.96 W11428.43	650
GFS	Goffs	91	N3507.87 W11510.59	4019
GRL	Groom Lake	18	N3713.91 W11548.16	4475
HEC	Hector	74	N3447.83 W11627.78	1854
ILC	Wilson Creek	110	N3815.02 W11423.65	9318
INS	Creech AFB	87	N3635.20 W11540.12	3101
LAS	McCarran Intl	116	N3604.78 W11509.59	2142
LSV	Nellis	12	N3614.68 W11501.50	1864
MLF	Milford	58	N3821.62 W11300.79	4977
MMM	Mormon Mesa	90	N3646.16 W11416.65	2120
MVA	Mina	98	N3833.92 W11801.97	7860
OAL	Coale Dale	124	N3800.20 W11746.23	4800
PGS	Peach Springs	57	N3537.48 W11332.67	4754
TPH	Tonopah Muni	119	N3801.84 W11702.01	5330
TQQ	Silverbow	77	N3748.00 W11647.00	5500
UTI	St George	23	N3705.29 W11335.53	2871



PAR	RWY	CAT	MINIMA	ARP	ELEV	Scale 1:35'500
	21L	A B D E	2057 - 0.8 200 (200-0.8/1.6) GS 3°	36° 14.060° N 115° 01.058° W	1857 [ft] 566 [m]	0 300 600 900 1200 1500 [m]
	3R	A B D E	2057 - 0.8 200 (200-0.8/1.6) GS 3°			0 1000 2000 3000 4000 5000 [ft]
SRA	21R	A C D E	2257 - 1.2 350 (350-1.2/1.6)			
	3L	A C D E	2257 - 1.2 350 (350-1.2/1.6)			

RWY	TORA	TODA	ASDA	LDA	PSN	THR	ALS
21L	10051 [ft] 3063 [m]	11051 [ft] 3368 [m]	11051 [ft] 3368 [m]	10051 [ft] 3063 [m]	36°14.043' N	115°01.018' W	⊕
3R	10120 [ft] 3084 [m]	11120 [ft] 3398 [m]	11120 [ft] 3398 [m]	10120 [ft] 3084 [m]	36°13.029' N	115°02.038' W	

ATIS	NELLIS GROUND	NELLIS TOWER	NELLIS CONTROL	TACAN	ILS RWY 21L	NELLIS EAST	NELLIS WEST
270.100 MHz	275.800   121.800	327.000   132.55	317.525	LSV 12X	109.10 Mhz	384.400	385.000

# HELICOPTER ARR/DEP VAD-CHART | VALID 2014

**NELLIS AFB (KLSV)**  
LAS VEGAS, NEVADA

ATIS  
270.100  
NELLIS GROUND  
275.800  
NELLIS TOWER  
327.000  
BLACKJACK  
377.800

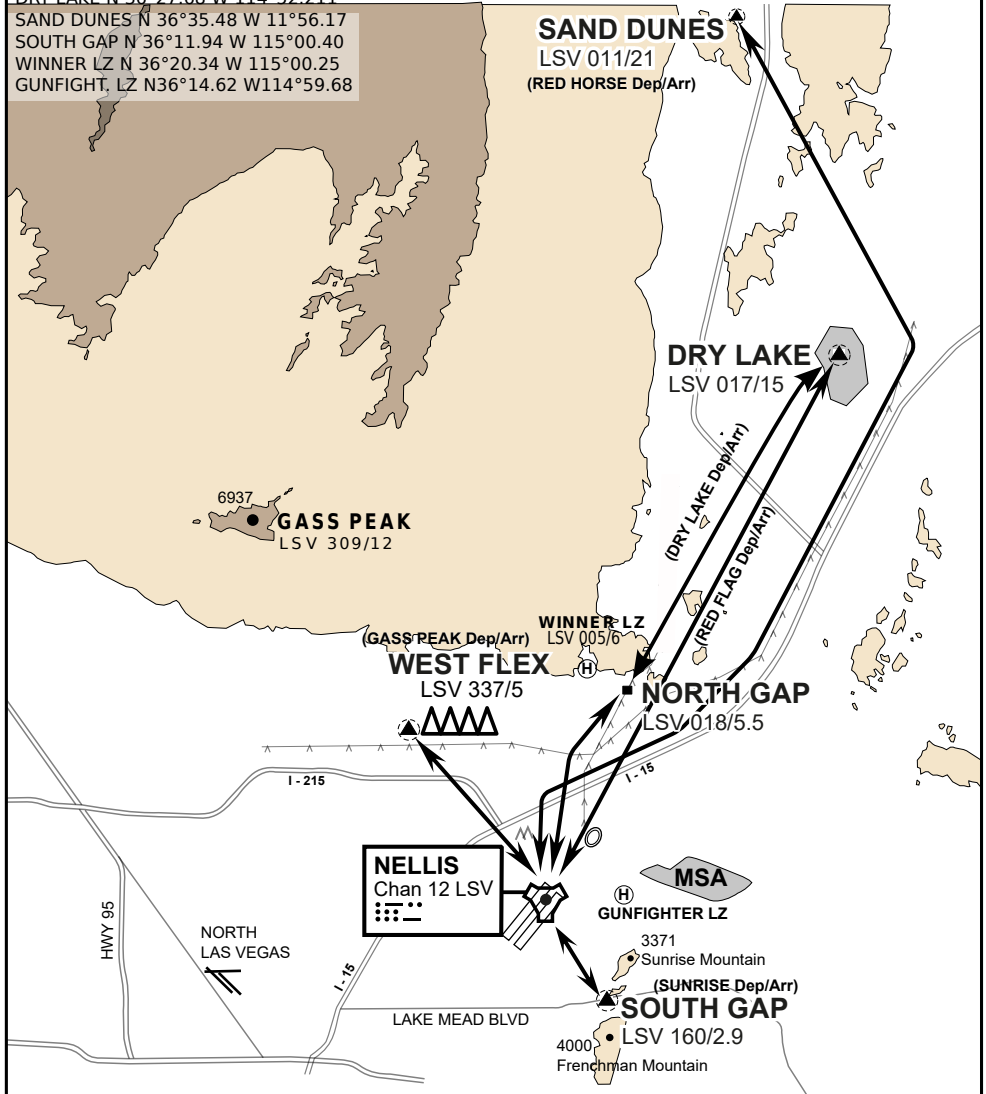
CAUTION: If unable to comply with restrictions advise ATC prior to departure.

## VMC ONLY

if below WX Minima request SVFR



JOLLY PAD N 36°15.08 W 115°01.65  
WEST FLEX N 36°18.64 W 115°08.00  
NORTH GAP N 36°20.00 W 114°59.30  
DRY LAKE N 36°27.68 W 114°52.211  
SAND DUNES N 36°35.48 W 11°56.17  
SOUTH GAP N 36°11.94 W 115°00.40  
WINNER LZ N 36°20.34 W 115°00.25  
GUNFIGHT, LZ N36°14.62 W114°59.68



vJABeG32NTRR NAV CHART

# HELICOPTER ARRIVAL AND DEPARTURES ROUTES

v.110 22APR20



# HELICOPTER ARR/DEP VAD-CHART | VALID 2014

**NELLIS AFB (KLSV)**  
LAS VEGAS, NEVADA

ATIS  
270.100  
NELLIS GROUND  
275.800  
NELLIS TOWER  
327.000  
BLACKJACK  
377.800

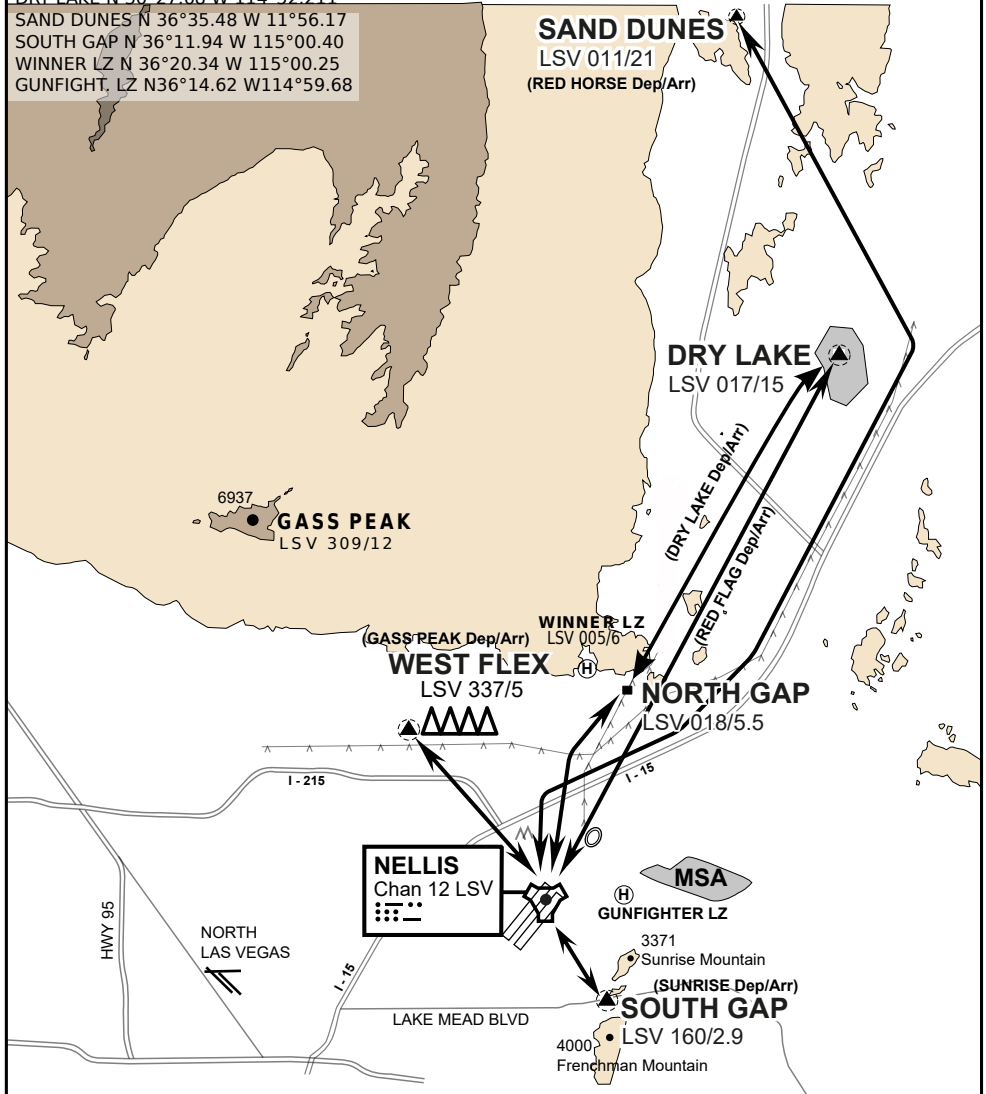
CAUTION: If unable to comply  
with restrictions advise ATC  
prior to departure.

## VMC ONLY

if below WX Minima request SVFR



JOLLY PAD N 36°15.08 W 115°01.65  
WEST FLEX N 36°18.64 W 115°08.00  
NORTH GAP N 36°20.00 W 114°59.30  
DRY LAKE N 36°27.68 W 114°52.211  
SAND DUNES N 36°35.48 W 11°56.17  
SOUTH GAP N 36°11.94 W 115°00.40  
WINNER LZ N 36°20.34 W 115°00.25  
GUNFIGHT, LZ N36°14.62 W114°59.68



vJABeG32NTRR NAV CHART

## HELICOPTER ARRIVAL AND DEPARTURES ROUTES

v.110 22APR20